

DOWTY

UNDERCARRIAGE LEVER SWITCH

**COMMUTATEUR A LEVIER DE
TRAIN D'ATTERRISSAGE**

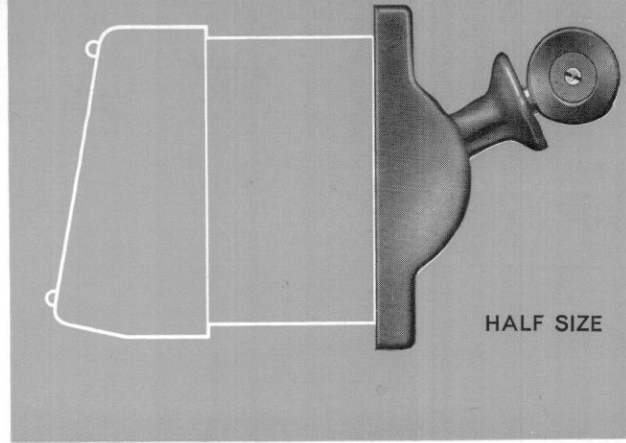
**HEBELSCHALTER FÜR
FLUGZEUG-FAHRGESTELLE**

Type DN.1076. Z

This new four-pole change-over switch has been designed to provide a compact foolproof control for aircraft landing gear selector systems. It is fully weatherproofed and has been tested for efficient operation in ambient temperatures from -50°C to $+70^{\circ}\text{C}$ and at altitudes up to 20,000 ft.

The switch incorporates an electrically-operated lock section preventing movement of the operating lever in one direction, and for aircraft applications would be used to prevent an accidental 'undercarriage UP' selection with the aircraft on the ground. A twist override is provided for emergency use. The operating lever carries a spring-loaded cup which enters a gate in each of its two positions to prevent inadvertent operation—the two operations of lifting the cup and lever shift can be carried out as one rapid action. The lever mechanism operates four heavy-duty silver slippers which provide the four-pole change-over with a 'break-before-make' action and additionally, an over-centre arrangement gives a positive lever action. Twelve 6BA terminals are arranged to allow the use of crimped tags if required and are protected by a synthetic rubber grommet.

Although primarily designed for undercarriage control this switch may be used for other sequence applications where the lock feature allows simpler circuits to be employed. The switch engraving, lock section and lift-the-cup features are optional and may be arranged to suit individual applications.



- ★ **Ground lock with twist override**
- ★ **Lift-the-cup lever lock**
- ★ **Simple, robust construction**
- ★ **Compact and fully weatherproofed**
- ★ **Wide ambient temperature range**



DOWTY

UNDERCARRIAGE LEVER SWITCH

**COMMUTATEUR A LEVIER DE
TRAIN D'ATTERRISSAGE**

**HEBELSCHALTER FÜR
FLUGZEUG-FAHRGESTELLE**

Type DN.1076. Z

This new four-pole change-over switch has been designed to provide a compact foolproof control for aircraft landing gear selector systems. It is fully weatherproofed and has been tested for efficient operation in ambient temperatures from -50°C to $+70^{\circ}\text{C}$ and at altitudes up to 20,000 ft.

The switch incorporates an electrically-operated lock section preventing movement of the operating lever in one direction, and for aircraft applications would be used to prevent an accidental 'undercarriage UP' selection with the aircraft on the ground. A twist override is provided for emergency use. The operating lever carries a spring-loaded cup which enters a gate in each of its two positions to prevent inadvertent operation—the two operations of lifting the cup and lever shift can be carried out as one rapid action. The lever mechanism operates four heavy-duty silver slippers which provide the four-pole change-over with a 'break-before-make' action and additionally, an over-centre arrangement gives a positive lever action. Twelve 6BA terminals are arranged to allow the use of crimped tags if required and are protected by a synthetic rubber grommet.

Although primarily designed for undercarriage control this switch may be used for other sequence applications where the lock feature allows simpler circuits to be employed. The switch engraving, lock section and lift-the-cup features are optional and may be arranged to suit individual applications.

SPECIF

Type Approvals: Offered for full British and American approvals.

General Design: To B.S. Specification G 100.

Rating at 28 V d.c. : 3 amps (0.1 henry).

Millivolt Drop: 20 Mv. maximum at 3 amps.

Connections: Twelve 6 B.A. terminal screws. 'Crimped' tags can be accommodated.

Operating load to withdraw cup: 7-10 lb.

Override operating torque: 10 lb. in. approx.

CARACTE

Homologations du Type: Présenté pour toutes homologations britanniques et américaines.

Réalisation d'ensemble: Conforme à la Spécification B.S. G 100.

Régime normal sous 28 V continu: 3 ampères (0,1 henry).

Chute de tension: 20 millivolt Maxi pour 3 ampères.

Connexions: Vis de prises 6 B.A. Des fiches "Amp" peuvent être prévues.

Charge entraînant le retrait de la ceuvtte: 3,2 à 4,5 kg.

BESCH

Amtliche Genehmigung: Eingereicht zur vollen Genehmigung in Grossbritannien und in Amerika.

Entwurf im allgemeinen: Gemäss British Standard Specification G 100.

Nennwert der Stromstärke bei 28 V G1.Strom: 3 A (0,1 henry).

Spannungsabfall in Millivolt: Höchstens 20 mV bei 3 A.

Anschlüsse: Brit. Association Klemmschrauben Nr. 6 (2,8 mm) "Amp"-Täfelchen können angebracht werden.

Kraft, erforderlich zum Zurückziehen des Griff-

CARRIAGE LEVER SWITCH

ATION

Mounting: Flange, with four 4 B.A. clearance fixing holes.

Vibration Test: BSS. G 100 (grade 3).

Acceleration Test: BSS. G 100 (class A, grade 1).

Climatic Test: BSS. G 100 (grade 1).

Ambient Temperature Range: -50°C . to $+70^{\circ}\text{C}$.

Altitude: Tested to 20,000 ft. with full rated inductive load.

STIQUES

Couple déterminant la course: 0,11 mkg environ.

Montage: Bride à quatre trous de fixation pour 4 B.A.

Essai aux vibrations: BSS. G 100 (Qualité 3).

Essai d'accélération: BSS. G 100 (Classe A, qualité 1).

Essai climatique: BSS. G 100 (Qualité 1).

Gamme des températures ambiantes: -50°C à $+70^{\circ}\text{C}$.

Altitude: 6 100 m à pleine charge inductive.

IBUNG

Knopfes: 3,2 bis 4,5 kg.

Drehmoment erforderlich zur Überwindung der Sperre: ungefähr 0,11 mkg.

Befestigung: 4 Löcher mit 4 mm Durchmesser in Flansch.

Vibrationsprobe: BSS.G 100 (Grad 3).

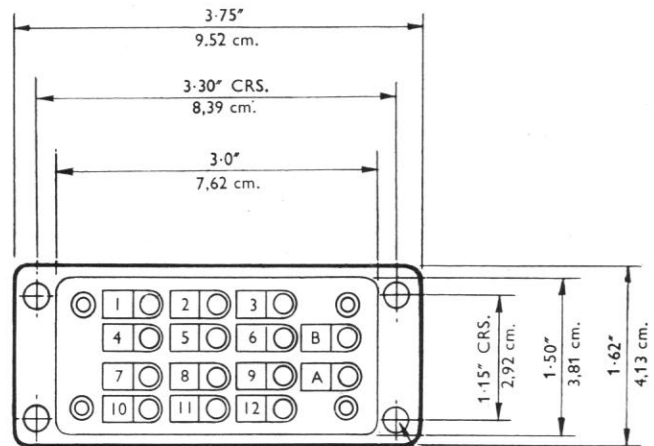
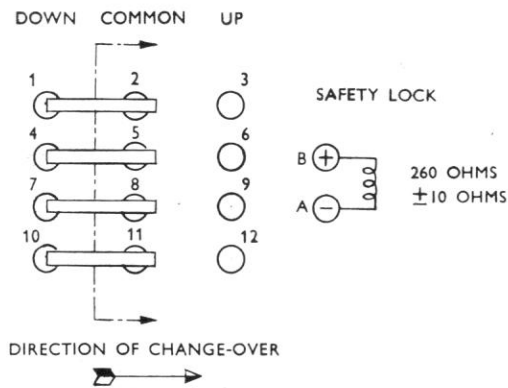
Beschleunigungsprobe: BSS. G 100 (Klasse A, Grad 1).

Klimaprobe: BSS. G 100 (Grad 1).

Temperaturbereich der Umgebung: $+50^{\circ}\text{C}$ bis $+70^{\circ}\text{C}$.

Höhe über dem Meeresspiegel: 6 km mit voller induktiver Belastung.

CONTACT ARRANGEMENT



CABLE ENTRY GROMMET REMOVED

4 FIXING HOLES, .156"/0.40 cm. DIA. FOR 4 B.A. CLEARANCE.

Electrics LTD

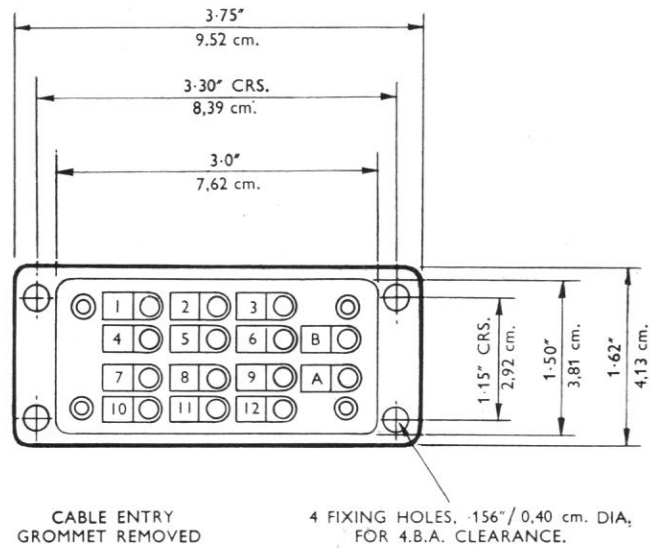
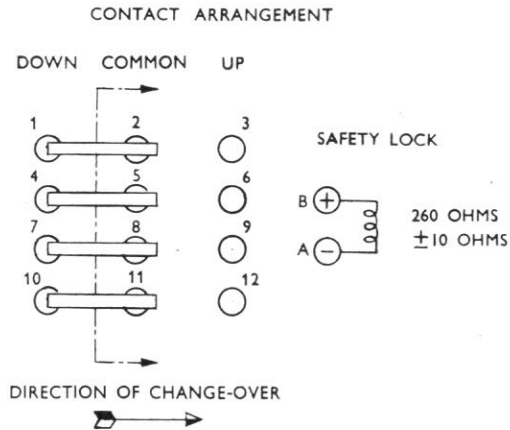
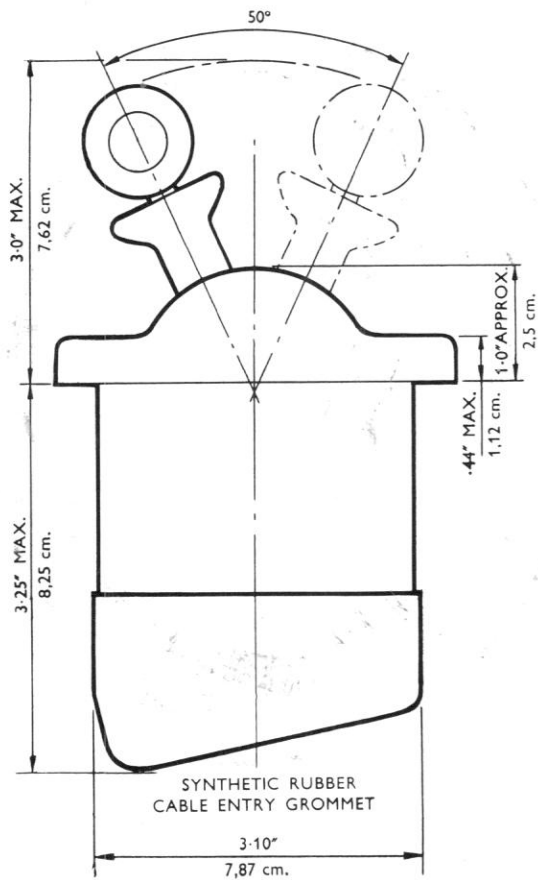
VISION - TEWKESBURY - GLOS.

is: "DOWTY'S, TEWKESBURY, TELEX"

Telex: 4385

of the Dowty Group

DOWTY UNDERCARRIAGE LEVER SWITCH



DOWTY *Electrics* LTD

AIRCRAFT ELECTRICS DIVISION - TEWKESBURY - GLOS.

Telephone: TEWKESBURY 2383

Telegrams: "DOWTY'S, TEWKESBURY, TELEX"

Telex: 4385

Member of the Dowty Group