

**DOWTY**

*Electrical Equipment*

# DOWTY UNDERCARRIAGE INDICATOR

TYPE C. 1224-Y

M.S.

5C/4204  
29.17.11.

British Patent No. 634,255

U.S.A. Patent No. 2,557,396

Canadian Patent 480,678



*Illustration: Actual Size*

The reduced size, weight and other incidental improvements of this indicator have led to its wide adoption at home and abroad. Standardized by The Ministry of Supply and approved by The Air Registration Board. M.O.S. Ref. 5C/4204.

**DOWTY NUCLEONICS LIMITED · BROCKHAMPTON PARK · GLOS**

**DOWTY**

*Electrical Equipment*

# **DOWTY UNDERCARRIAGE INDICATOR**

**TYPE C. 1224-Y**

As standardized by The Ministry of Supply for all future military and naval aircraft and approved by The Air Registration Board for Civil Types.

## **OPERATION**

This indicator has the miniature S.A.E. case for dashboard instruments and is suitable for either front or back mounting. The frontal appearance is standard, so that no change in cockpit drill is necessary. The method of operation is standard, except that the manipulation of the day and night screen and the changeover switch for the lamps is of an improved type, giving greater ease of working, especially with gloved fingers.

## **CONNECTION FACILITIES**

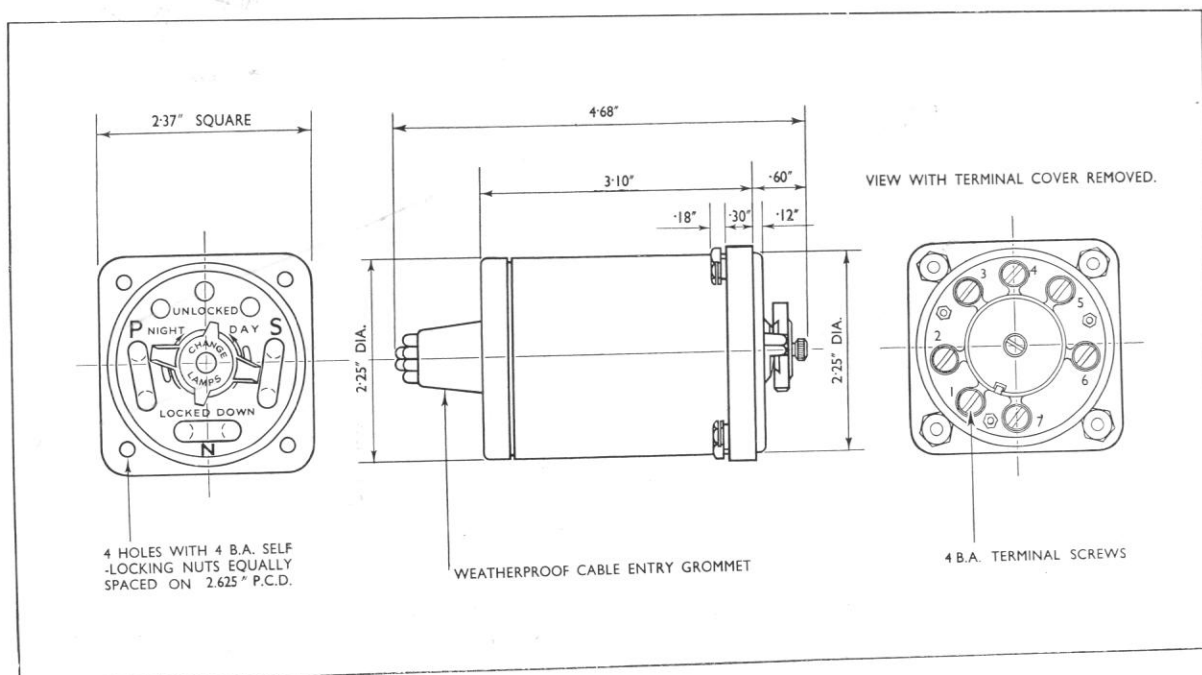
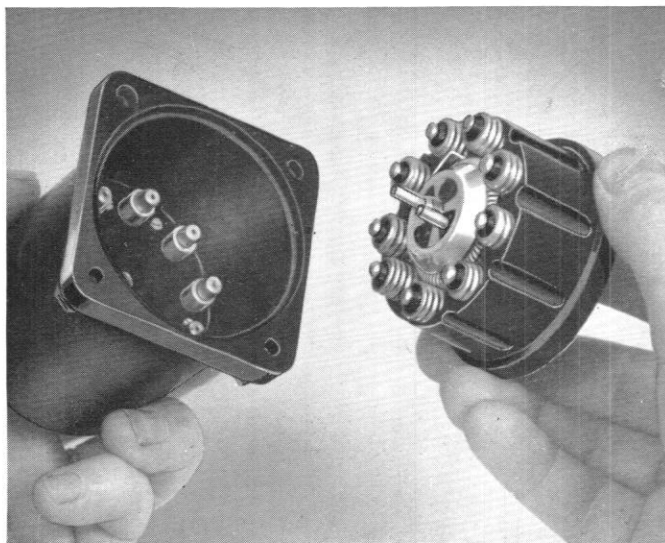
The terminals are of the usual shrouded pattern, and are protected by an easily removable back cover. The cable grommet is arranged with a number of small pips which are blind until removed with wire cutters and the conductors fed through. A slight pull on the cover has the effect of turning the cable grommet inside out, giving ample space for access to wiring. The arrangement conforms to the latest S.B.A.C. requirements for individual conductors of Unisel No. 4 cable or the equivalent. A type with a Breeze connector is also available.

## WEIGHT

The weight, with lamps, is 0.5lb., compared with 1 lb. for the earlier type of indicator.

## ADVANTAGES

1. The necessary 9 lamps are housed in an S.A.E. case which gives a saving of 50% in dash-board area, in comparison with earlier types.
2. The indicator is completely weatherproofed to the latest Ministry of Supply requirements.
3. The new design gives easier operation with gloved fingers.
4. The lamps are spring-loaded—and by the turn of a screw in the centre of the dial, the whole interior of the indicator can be removed with lamps attached. Lamp replacement is simple compared with the old pattern indicator.



**DOWTY**

*Electrical Equipment*

**DOWTY NUCLEONICS LIMITED**

BROCKHAMPTON PARK · ANDOVERSFORD · GLOS

**DOWTY EQUIPMENT OF CANADA LIMITED**

AJAX, ONTARIO, CANADA

**DOWTY EQUIPMENT (AUSTRALIA) PTY. LTD.**

SYDNEY, N.S.W.

**DOWTY CORPORATION**

25 Beaver Street  
NEW YORK 4, N.Y., U.S.A.

*Members of the DOWTY Group*