

SMITHS

E.2 Series Compass

Designed for mounting at or above eye level the E.2 Magnetic Compass has been developed for use in all types of civil and military aircraft. Primarily intended as a stand-by compass, this type of instrument is particularly suitable for small aircraft and gliders due to its light weight and compact size.

The three basic types (E.2, E.2A and E.2B) are similar in general design in that they are fitted with a liquid damped compass card which is enclosed in a transparent moulded bowl. The card, which is calibrated in 10° divisions and carries a circular magnet, is supported on a pivot running in a jewel bearing. To reduce the possibility of parallax errors the card is formed to suit the inner profile of the bowl.

A small bellows unit compensates for changes in liquid volume over the temperature range -40°C. to +70°C.

Special features incorporated in the E.2 Series are as follows:

E.2 Provided with means for applying correction for co-efficients 'A', 'B', 'C' and 'R'.

Two elongated holes in the mounting flange enable the compass to be rotated in azimuth to correct for co-efficient 'A', the edge of the flange being marked $\pm 10^\circ$ for additional accuracy. Correctors for co-efficients 'B', 'C' and 'R' are built into the compass body and a special adjusting key is provided.

White or luminous scale markings on black background.

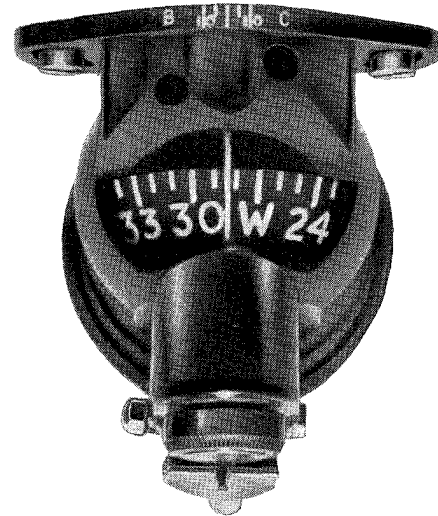
E.2A Similar to E.2 but co-efficient 'R' corrector not fitted. White or luminous scale markings on black background.

E.2B Similar to E.2A but fitted with integral lighting using a special low-power lamp to prevent magnetic interference. A dimmer switch can be supplied to control the lighting.

White scale markings on black background.



E.2

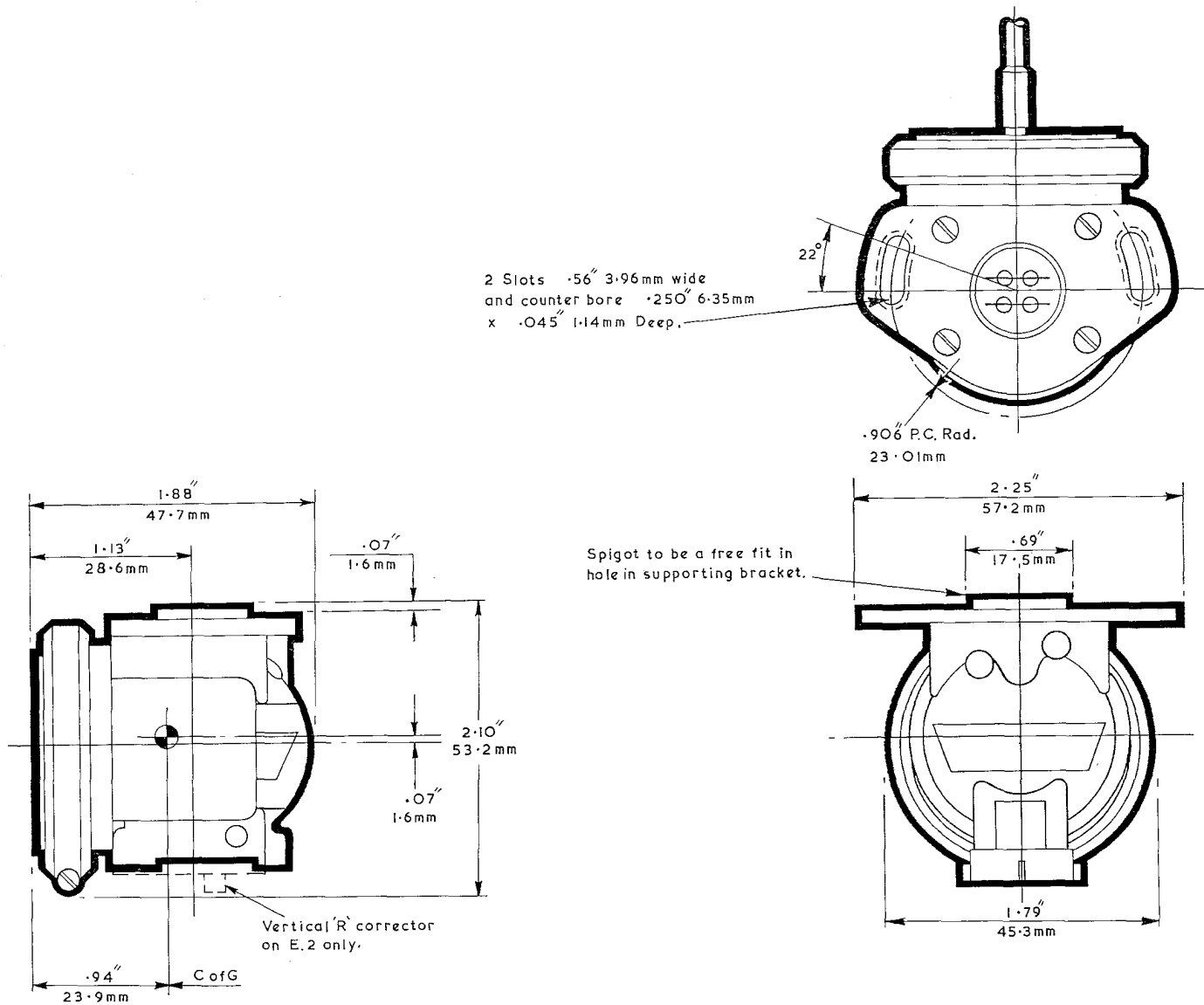


E.2B

Code	Description	Remarks
KCA-0101W	Compass E.2A	Plain White Scale
KCA-0101C	Compass E.2A	Luminous Scale
KCA-0102W	Compass E.2	Plain White Scale, 'R' corrector
KCA-0102C	Compass E.2	Luminous Scale, 'R' corrector
KCA-0104W	Compass E.2B	Plain White Scale. Integral Lighting, 28v. D.C.

NOTE: The E.2 Series Compass is normally supplied with plain white or luminous markings only.

C2-1 Installation Data E.2 Series Compass



KCA-0101 & KCA-0102

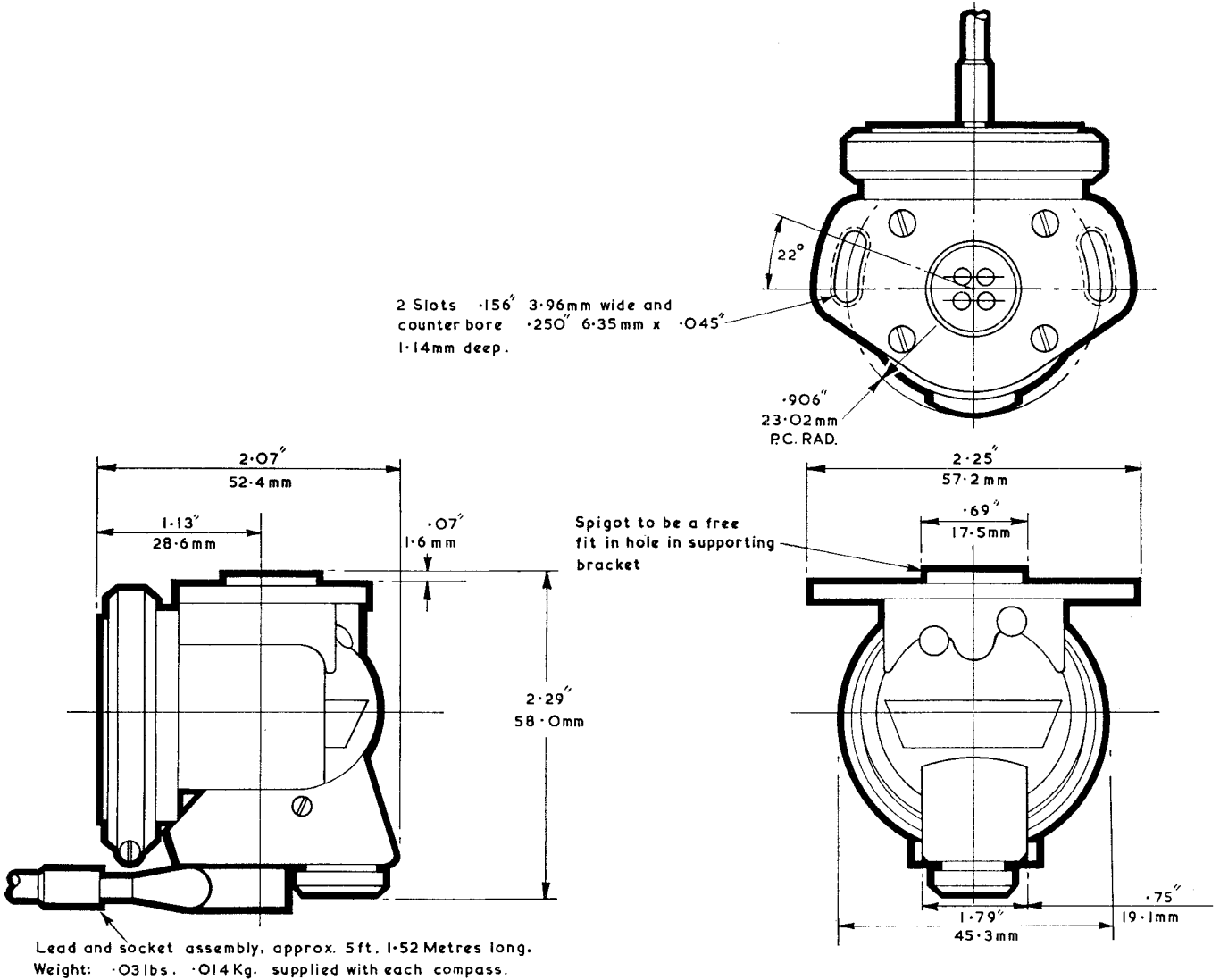
E.2 Weight : 0.203 lbs. 0.092 Kg. E.2A Weight : 0.197 lbs. 0.090 Kg.

SMITHS

AVIATION DIVISION

The Aviation Division of
S. Smith & Sons (England) Ltd
Smiths, Kelvin Hughes and Waymouth
aviation instruments and systems
K.L.G. aviation instruments

Kelvin House, Wembley Park Drive, Wembley, Middx. Wembley 8888 Grams: Airspeed Wembley Telex: 25366



KCA-0104

Weight : 0.218 lbs. 0.099 Kg.

SMITHS

AVIATION DIVISION

The Aviation Division of
S. Smith & Sons (England) Ltd
Smiths, Kelvin Hughes and Waymouth
aviation instruments and systems
K.L.G. aviation instruments

Kelvin House, Wembley Park Drive, Wembley, Middx. Wembley 3255 Grams: Airspeed Wembley Telex: 25366