

AP101B-0402-3A

Page DF.1

CONTROLS

FLAP OPERATING MECHANISM, PORT

Part Number	Description	No. Off	Matl. Spec.	Plate No.
1	2	3	4	5
EA1.20.701	FLAP OPERATING MECHANISM, PORT, ASSEMBLY	—	—	DF1/17
	Spares for:			
EA1.20.711	. BRACKET, flap operating, jack unit support	2	L65	DF1/25
	Attaching parts for EA1.20.711:			
A25/10G	. Bolt, 5/16" BSF	2	—	DF1/20
SP15G	. Washer	2	—	DF1/19
EA1.20.885	. BRACKET, mounting, flap operating jack unit	4	DTD683	DF1/23
	(Pre Mod.4781)			
EA3.20.3991	. BRACKET, mounting, flap operating jack unit (Mod.4781)	4	S97	
	Attaching parts for EA1.20.885 & EA3.20.3991:			
A25/8G	. Bolt, 5/16" BSF	1	—	DF1/24
EA1.20.3129	. BRACKET, mounting, Desynn transmitter	1	L72	DF2/17
	Attaching parts for EA1.20.3129:			
A25/1B	. Bolt, 4BA	6	—	DF2/15
AS1900B	. CLIP, cable	1	—	DF2/15A
EA3.20.1011	. LINK, CONNECTING, FLAP TO OPERATING	4	—	DF1/1
	MECHANISM, ASSEMBLY			
	Spares for:			
EA3.20.1009	. . BEARING	2	—	DF1/1A
EA3.20.1007	. . BUSH	2	—	DF1/1B
EA3.20.1013	. . HOUSING, bearing	1	—	DF1/1C
EA3.20.1015	. . HOUSING, bearing	1	—	DF1/1D
EA1.20.797	. . PLATE, locking	1	L72	DF1/10
	Attaching parts for EA1.20.797:			
A25/9B	. . Bolt, 4BA	2	—	DF1/9
AGS2001B1	. . Nut, stiff, 4BA	2	—	DF1/8
SP15B	. . Washer	2	—	DF1/7
EA1.20.795	. . SCREW, adjusting	1	S11	DF1/6
EA1.20.791	. . WASHER	2	L65 or L72	DF1/11
SP21	NIPPLE, lubricating	4	—	DF1/22A
EA1.20.683	. PLATE, cover, at rib 3A, for assembly of flap jack unit	1	DTD320	DF2/22A
	(Pre Mod.738)			
EA3.20.2289	. PLATE, cover, at rib 3A, for assembly of flap jack unit	1	L72	DF2/22
	(Mod.738)			
	Attaching parts for EA1.20.683 or EA3.20.2289:			
A61/1C	. Bolt, 2BA	6	—	DF2/20
AGS2001C3	. Nut, stiff, 2BA	6	—	DF2/23
SP15C	. Washer	6	—	DF2/21
EA1.20.10777	. PLATE, cover at rib 3A, for assembly of flap jack unit	1	L72	DF2/13
	Attaching parts for EA1.20.10777:			
A61/1C	. Bolt, 2BA	6	—	DF2/7
AGS2001C3	. Nut, stiff, 2BA	6	—	DF2/9
SP15C	. Washer	6	—	DF2/8
EA1.20.10778	. PLATE, cover at rib 3A, for assembly of flap jack unit	1	L72	DF2/31
	Attaching parts for EA1.20.10778:			
A61/1C	. Bolt, 2BA	6	—	DF2/29
AGS2001C3	. Nut, stiff, 2BA	6	—	DF2/32
SP15C	. Washer	6	—	DF2/30

R

CONTROLS

FLAP OPERATING MECHANISM, PORT

Part Number	1 2 3 4 5 6	Description	No. Off	Matl. Spec.	Plate No.
EA1.20.10779	.	PLATE, cover at ribs 3, 4 & 5, for assembly of flap jacks unit	2	L72	DF1/5
A61/1C	.	Attaching parts for EA1.20.10779:	7	—	DF1/2
AGS2001C3	.	Bolt, 2BA	7	—	DF1/4
SP15C	.	Nut, stiff, 2BA	7	—	DF1/3
	.	Washer	7	—	DF1/3
EA1.20.10780	.	PLATE, cover at ribs 3, 4 & 5, for assembly of flap jack unit	1	L72	DF1/18
A61/1C	.	Attaching parts for EA1.20.10780:	7	—	DF1/14
AGS2001C3	.	Bolt, 2BA	7	—	DF1/16
SP15C	.	Nut, stiff, 2BA	7	—	DF1/15
	.	Washer	7	—	DF1/15
EA1.20.813	.	ROD, PUSH, OUTBOARD FLAP CONTROL, BETWEEN HINGE AND OPERATING JACK, ASSEMBLY	1	—	DF2/28
	.	Spares for:			
EA1.20.839	.	BUSH	1	DTD197	DF2/25
EA1.20.827	.	EYE-END	1	L65	DF2/24
EA1.20.825	.	FORK-END	1	L65	DF2/36
	.	Attaching parts for EA1.20.827 and EA1.20.825:			
EEAS37/15A	.	Nipple	6	S96	DF2/35
EEAS38/2A	.	Spoke	3	S96	DF2/34
SP21	.	NIPPLE, lubricating	1	—	DF2/39
EA1.20.805	.	PIN, special	1	S11	DF2/37
SP90G6	.	PIN, split, 1/8" dia	1	—	DF2/37A
EA1.20.807	.	PLATE, locking	1	L72	DF2/33
	.	Attaching parts for EA1.20.807:			
A33B8	.	Screw, 4BA	2	—	DF2/33A
EA1.20.833	.	TUBE	1	—	DF2/33B
EEAS5	.	WASHER, red fibre, for lubricating nipple	1	BSS216	DF2/38
	.	Attaching parts for EA1.20.813:			
EA1.20.803	.	Pin, special	1	S11	DF1/22
SP90G6	.	Pin, split, 1/8" dia	1	—	DF1/21
EA1.20.815	.	ROD, PUSH, INBOARD AND OUTBOARD FLAP CONTROL, BETWEEN HINGE AND OPERATING JACK, ASSEMBLY	2	—	DF1/12
	.	Spares for:			
EA1.20.839	.	BUSH	1	DTD197	DF1/12A
EA1.20.827	.	EYE-END	1	L65	DF1/12B
EA1.20.825	.	FORK-END	1	L65	DF1/12C
	.	Attaching parts for EA1.20.827 and EA1.20.825:			
EEAS37/15A	.	Nipple	6	S96	DF1/12D
EEAS38/2A	.	Spoke	3	S96	DF1/12E
SP21	.	NIPPLE, lubricating	1	—	DF1/12F
EA1.20.805	.	Pin, special	1	S11	DF1/12G
SP90G6	.	PIN, split, 1/8" dia	1	—	DF1/12H
EA1.20.807	.	PLATE, locking	1	L72	DF1/12J
	.	Attaching parts for EA1.20.807:			
A33B8	.	Screw, 4BA	2	—	DF1/12K
EA1.20.835	.	TUBE	1	—	DF1/12L
EEAS5	.	WASHER, red fibre, for lubricating nipple	1	BSS216	DF1/12M
	.	Attaching parts for EA1.20.815:			
EA1.20.803	.	Pin, special	1	S11	DF1/22
SP90G6	.	Pin, split, 1/8" dia	1	—	DF1/21

AP101B-0402-3A

CONTROLS

FLAP OPERATING MECHANISM, PORT

Part Number	1 2 3 4 5 6	Description	No. Off	Matl. Spec.	Plate No.
EA1.20.819	.	ROD, PUSH, INBOARD FLAP CONTROL BETWEEN HINGE AND OPERATING JACK CONNECTING ARM, ASSEMBLY Spares for:	1	—	DF1/13
EA1.20.839	.	BUSH	1	DTD197	DF1/13A
EA1.20.827	.	EYE-END	1	L65	DF1/13B
EA1.20.825	.	FORK-END	1	L65	DF1/13C
EEAS37/15A	.	Attaching parts for EA1.20.827 and EA1.20.825:	6	S96	DF1/13D
EEAS38/2A	.	Nipple	3	S96	DF1/13E
SP21	.	Spoke	1	—	DF1/13F
EA1.20.805	.	NIPPLE, lubricating	1	—	DF1/13G
SP90G6	.	PIN, special	1	S11	DF1/13H
EA1.20.807	.	PIN, split, 1/8" dia	1	—	DF1/13J
A33B8	.	PLATE, locking	1	L72	DF1/13K
EA1.20.893	.	Attaching parts for EA1.20.807:	2	—	DF1/13L
EEAS5	.	Screw, 4BA	1	—	DF1/13M
EA1.20.803	.	TUBE	1	—	DF1/22
SP90G6	.	WASHER, red fibre, for lubricating nipple	1	BSS216	DF1/21
EA1.20.3133	.	Attaching parts for EA1.20.819:	1	S11	DF2/1
AGS899/2	.	Pin, special	1	—	DF2/4
EA1.20.881	.	Pin, split, 1/8" dia	1	—	DF2/3
EA1.20.883	.	ROD, CONNECTING, FLAP INDICATOR MECHANISM, ASSEMBLY	1	—	DF2/11
A27CT	.	Consisting of:	2	—	DF2/2
A27CTL	.	Collar	1	—	DF2/12
SP4Y/B4	.	FORK-END	1	L1	DF2/6
SP90C7	.	FORK-END, L.H. thread	1	L1	DF2/5
EA1.20.3157	.	NUT, thin, 2BA	1	—	DF2/10
135FL	.	NUT, thin, 2BA	1	—	DF2/14
A61/2C	.	PIN, shackle	2	—	DF2/16
AGS2001C3	.	PIN, split, 1/16" dia	2	—	DF2/19
SP15C	.	ROD, adjusting	1	DTD683	DF2/18
EEAS5	.	TRANSMITTER, desynn	1	—	DF1/22B
	.	Attaching parts for 6A/2134:	4	—	
	.	Bolt, 2BA	4	—	
	.	Nut, stiff, 2BA	4	—	
	.	Washer	4	—	
	.	WASHER, red fibre, for lubricating nipple	4	—	

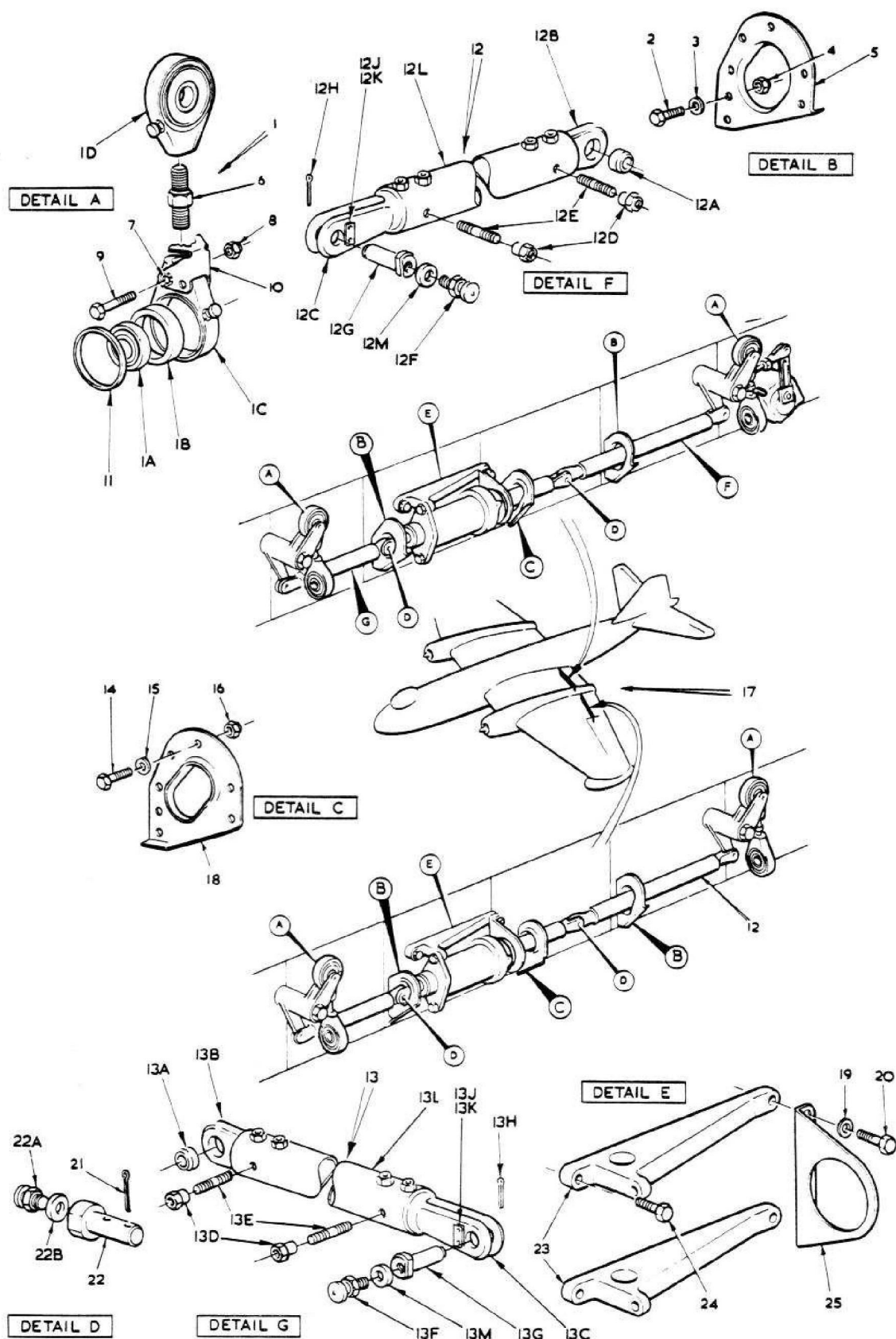


FIG.1 FLAP OPERATING MECHANISM, PORT

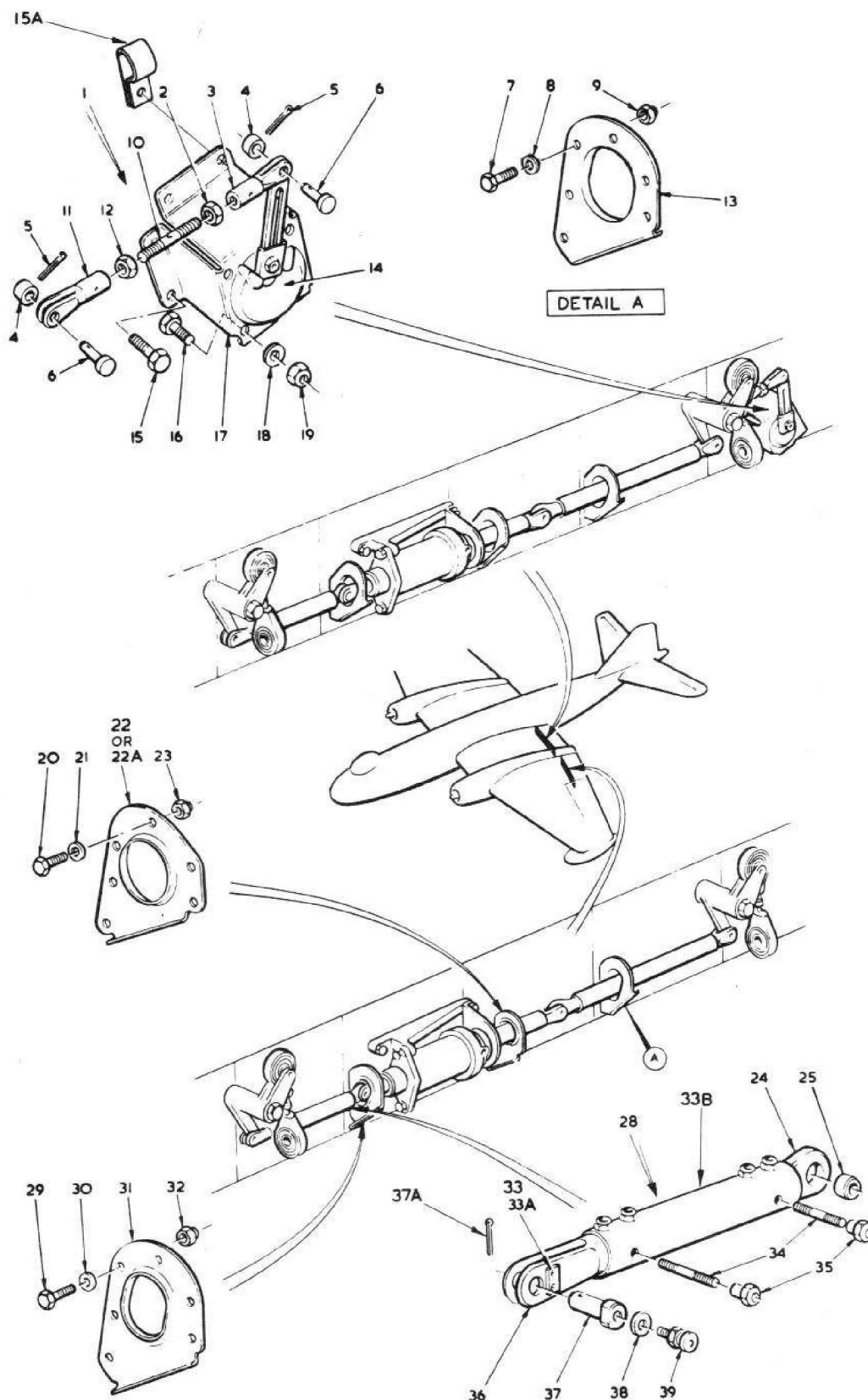


FIG.2 FLAP OPERATING MECHANISM PORT