

MISCELLANEOUS ATTACHMENT DETAILS

Part Number	Description 1 2 3 4 5 6	No. Off	Matl. Spec.	Plate No.
-	WING TO FUSELAGE ATTACHMENT DETAILS, PORT (EA1.00.21) Spares for:	-	-	
EA3.20.135	. BLOCK, sealing, wing to fuselage joint	1	Linatex Rubber	1/23
EA1.20.2897	. BLOCK, sealing, wing to fuselage joint	1	Linatex Rubber	1/4
EA1.20.2899	. BLOCK, sealing, wing to fuselage joint	1	Linatex Rubber	1/48
EA1.20.1101	. BOLT, main pick-up, wing to fuselage attachment	2	DTD743	1/1
EA1.20.2277	. BOLT, special, wing to fuselage attachment	2	DTD743	1/10
A25/10C	. BOLT, 2BA hex. head, 1".45 long	1	-	1/15
R A59/11N	. BOLT, 1/2" BSF (Alt.R60/112)	1	-	1/49
AS1242/1C	. BOLT, 2BA c'sk head	10	-	1/32
A60/6P	. BOLT, shear, main spar to fuselage at frame 21	7	-	1/34
EA3.11.5179	. BUSH (Alt.R60/112)	1	-	1/50
EA1.11.129	. COLLAR, special, rear spar to fuselage	1	DTD126A	1/26
EA3.20.573 or	. GUSSET, bottom, main spar closing panel	1	L72	1/44
EA9.20.1371	. GUSSET, bottom, main spar closing panel	1	S510	1/45
EA3.20.575	. GUSSET, top, main spar closing panel	1	L72	1/38
or				
EA9.20.1373	. GUSSET, top, main spar closing panel	1	S510	1/38
A27/CP	. NUT, 2BA plain	1	-	1/29
A27/NS	. NUT, 1/2" BSF slotted	1	-	1/42
A27/SS	. NUT, 3/4" BSF slotted	2	-	1/3
A27/WS	. NUT, 1" BSF slotted	2	-	1/7
AGS572/J	. NUT, 9/16" BSF thin slotted	7	-	1/37
AGS2001/C/1	. NUT, stiff, 2BA	72	-	1/17
AGS2002/C/1	. NUT, stiff, 2BA	1	-	1/30
EA1.20.2275	. PAD, special, wing attachment	2	S11	1/6
EA1.11.127	. PIN, special, rear spar to fuselage	1	S11	1/27
SP90/E8	. PIN, split	8	-	1/36
SP90/H13	. PIN, split	2	-	1/5
SP90/K17	. PIN, split	2	-	1/9
EEAS1/1C	. SCREW, 2BA 120° c'sk head	28	S96	1/11
EEAS1/1-1/2C	. SCREW, 2BA 120° c'sk head	430	S96	1/14
EEAS1/2C	. SCREW, 2BA 120° c'sk head	1	S96	1/31
EEAS1/2-1/2C	. SCREW, 2BA 120° c'sk head	24	S96	1/18
EEAS1/4C	. SCREW, 2BA 120° c'sk head	43	S96	1/22
EA3.20.689	. STRIP, closing, upper, aft of spar (Supplied undrilled and with trim allowance)	1	L73	1/12
EA3.20.691	. STRIP, closing, lower, aft of spar (Supplied undrilled and with trim allowance)	1	L73	1/24

MISCELLANEOUS ATTACHMENT DETAILS

Part Number	Description	No. Off	Mati. Spec.	Plate No.	
					1
EA1.11.131	. WASHER, distance, rear spar to fuselage	1	L40	1/28	
EA1.20.1335	. WASHER, special, main pick-up bolt	2	L72	1/2	
EA3.20.1401	. WASHER, special, main spar to fuselage	2	Laminated	1/8	
EEAS27/16EU	. WASHER, 18 SWG	24	S515	1/16	
EEAS27/16GU	. WASHER, 14 SWG	48	S515	1/19	
AGS163/C	. WASHER, 2BA spring	35	—	1/21	
AGS2038/C	. WASHER, 2BA	10	—	1/33	
SP13/C	. WASHER, 2BA plain	1	—	1/20	
SP15/P	. WASHER, 9/16" BSF plain	7	—	1/35	
SP16/N	. WASHER, 1/2" BSF plain (Pre Alt.R60/112)	1	—	1/43	
or	.				
SP125N	. WASHER, 1/2" (Alt.R60/112)	1	—		
—	WING TO FUSELAGE ATTACHMENT DETAILS, STARBOARD (EA1.00.22) Spares for this assembly are identical to those for assembly Part No.EA1.00.21 on page K1 except for the following deletions and additions Delete:	—	—		
EA3.20.573	. GUSSET, bottom, main spar closing panel	1	L72	1/44	
or	.				
EA9.20.1371	. GUSSET, bottom, main spar closing panel	1	S510	1/45	
EA3.20.575	. GUSSET, top, main spar closing panel	1	L72	1/38	
or	.				
EA9.20.1373	. GUSSET, top, main spar closing panel	1	S510	1/39	
EA3.20.689	. STRIP, closing, upper, aft of spar (Supplied undrilled and with trim allowance)	1	L73	1/12	
EA3.20.691	. STRIP, closing, lower, aft of spar (Supplied undrilled and with trim allowance) Add:	1	L73	1/24	
EA3.20.574	. GUSSET, bottom, main spar closing panel	1	L72	1/46	
or	.				
EA9.20.1372	. GUSSET, bottom, main spar closing panel	1	S510	1/47	
EA3.20.576	. GUSSET, top, main spar closing panel	1	L72	1/40	
or	.				
EA9.20.1374	. GUSSET, top, main spar closing panel	1	S510	1/41	
EA3.60.690	. STRIP, closing, upper, aft of spar (Supplied undrilled and with trim allowance)	1	L73	1/13	
EA3.20.692	. STRIP, closing, upper, aft of spar (Supplied undrilled and with trim allowance)	1	L73	1/25	
—	FRONT FUSELAGE TO CENTRE FUSELAGE ATTACHMENT DETAILS (EA1.00.23) Consisting of:	—	—	2/21	
EA1.10.1207	. BOLT, special, attachment	111	S11	2/10	
EA1.10.1209	. BOLT, special, attachment (Pre Alt.R60/301)	54	S96	2/3	
EA1.10.1209	. BOLT, special, attachment (Alt.R60/301)	48	S96	2/3	
EA3.10.6541	. BOLT, special, 5/16" (Alt.R60/301)	6	—		
A25/1C	. BOLT, 2BA hex. head	18	—	2/12	
A25/2C	. BOLT, 2BA hex. head	13	—	2/14	
EA3.10.6541	. BOLT, special	6	—		

MISCELLANEOUS ATTACHMENT DETAILS

Part Number	Description 1 2 3 4 5 6	No. Off	Matl. Spec.	Plate No.
A25/15N	. BOLT, 1/2" BSF hex. head	4	—	2/6
AGS.2001/N/1	. NUT, stiff, 1/2" BSF	4	—	2/9
E.A1.10.2713	. WASHER, special	4	—	2/8
AGS.163/D	. WASHER, 1/4" BSF spring	111	—	2/11
AGS.164/E	. WASHER, 5/16" BSF spring	54	—	2/4
SP15/C	. WASHER, 2 BA plain	31	—	2/13
SP15/N	. WASHER, 1/2" BSF plain	4	—	2/7
	CENTRE FUSELAGE TO REAR FUSELAGE ATTACHMENT DETAILS (E.A1.00.25) Consisting of:—	—	—	3/18
A25/6E	. BOLT, 1/4" BSF hex. head	64	—	3/17
A25/7E	. BOLT, 1/4" BSF hex. head	16	—	3/5
A25/10E	. BOLT, 1/4" BSF hex. head	6	—	3/6
A25/11E	. BOLT, 1/4" BSF hex. head	4	—	3/12
A25/13E	. BOLT, 1/4" BSF hex. head	40	—	3/2
A25/15E	. BOLT, 1/4" BSF hex. head	8	—	3/15
A25/13G	. BOLT, 5/16" BSF hex. head	14	—	3/1
A25/15G	. BOLT, 5/16" BSF hex. head	4	—	3/16
A25/16N	. BOLT, 1/2" BSF hex. head	2	—	3/11
A25/18N	. BOLT, 1/2" BSF hex. head	2	—	3/13
R 33H2202125	. CEMENT, bostik	QR	—	3/14
AGS.2001/E/1	. NUT, stiff, 1/4" BSF	138	—	3/3
AGS.2001/G/1	. NUT, stiff, 5/16" BSF	18	—	3/4
AGS.2001/N/1	. NUT, stiff, 1/2" BSF	4	—	3/10
E.A1.10.2713	. WASHER, special	4	—	3/9
SP15/E	. WASHER, 1/4" BSF plain	74	—	3/7
SP15/N	. WASHER, 1/2" BSF plain	4	—	3/8
—	TAILPLANE TO REAR FUSELAGE ATTACHMENT DETAILS (E.A1.00.53) Consisting of:—	—	—	4/23
E.A3.20.75	. BOLT, special pivot,tailplane attachment forward hinge point	2	S97	4/29
E.A1.12.451	. BOLT, special, tailplane actuator anchor	1	S65	4/25
R A24/PP	. NUT, tailplane attachment forward hinge point	2	Stainless steel	4/28
E.A1.12.453	. NUT, special slotted, tailplane actuator anchor	1	MS	4/24
SP21	. NIPPLE, lubricating	2	—	4/30
SP90/E8	. PIN, split	3	—	4/21
E.A1.12.455	. WASHER, special, tailplane actuator anchor	2	L72	4/22

MISCELLANEOUS ATTACHMENT DETAILS

Part Number	Description	No. Off	Mati. Spec.	Plate No.	
					1
—	FIN TO FUSEALGE ATTACHMENT DETAILS (E.A1.00.55) Consisting of:—	—	—	4/9	
A25/1C	. BOLT, 2 BA hex. head	10	—	4/11	
A25/9C	. BOLT, 2 BA c'sk head	6	—	4/10	
AS.1242/1C	. BOLT, 2 BA c'sk head	18	—	4/12	
AS.1242/1-1/2C	. BOLT, 2 BA c'sk head	36	—	4/20	
EEAS.1/4C	. SCREW, 2 BA 120 ^D c'sk head	58	S96	4/18	
EEAS.1/5C	. SCREW, 2 BA 120 ^D c'sk head	20	S96	4/19	
—	FIN TO FUSEALGE ATTACHMENT DETAILS (EA3.32.237) (Alt. R60/12) Spares for:—	—	—	6	
E.K5.32.607	. BOLT, special, port	1	—	6/1	
E.K5.32.609	. BOLT, special, starboard	1	—	6/2	
A60/6G	. BOLT, hex. head, 5/16" BSF	1	—	6/3	
A60/9G	. BOLT, hex. head, 5/16" BSF	1	—	6/4	
A60/7J	. BOLT, hex. head, 3/8" BSF	1	—	6/5	
A60/8J	. BOLT, hex. head, 3/8" BSF	1	—	6/6	
A60/9J	. BOLT, hex. head, 3/8" BSF	1	—	6/7	
A60/10J	. BOLT, hex. head, 3/8" BSF	2	—	6/8	
A60/11J	. BOLT, hex. head, 3/8" BSF	3	—	6/9	
A60/13J	. BOLT, hex. head, 3/8" BSF	1	—	6/10	
A60/14J	. BOLT, hex. head, 3/8" BSF	1	—	6/11	
A60/16J	. BOLT, hex. head, 3/8" BSF	3	—	6/12	
E.A1.32.127	. CAGE, assembly, port	1	—	6/13	
E.A1.32.128	. CAGE, assembly, starboard	1	—	6/14	
E.A3.32.245	. FITTING, fin, spar root, port Spares for:—	1	—	6/15	
E.A1.32.79	. . BUSH	1	—	6/16	
E.A1.32.81	. . BUSH	1	—	6/17	
E.A3.32.241	. . FITTING, fin spar root	1	—	6/18	
E.A3.32.247	. FITTING, fin, spar root, starboard Spares for:—	1	—	6/19	
E.A1.32.83	. . BUSH	1	—	6/20	
E.A1.32.85	. . BUSH	1	—	6/21	
E.A3.32.243	. . FITTING, fin spar root	1	—	6/22	
A27/QP	. NUT, 5/8" BSF	2	—	6/23	
A27/GP	. NUT, 5/16" BSF	2	—	6/24	
A58/JT	. NUT, 3/8" BSF	13	—	6/25	
E.A9.32.17	. PACKING, laminated	4	—	6/26	
V63013-LS-054166	. SHIM, laminated	1	BAC.M64	6/27	
V63013-LS-046166	. SHIM, laminated	1	BAC.M64	6/28	
EEAS.319-G-2	. WASHER	2	—	6/29	
EEAS.319-J-1	. WASHER	8	—	6/30	
EEAS.319-J-2	. WASHER	5	—	6/31	

MISCELLANEOUS ATTACHMENT DETAILS

Ref. No.	Part No.	Description	No. off	Matl. Spec.	Cl. of Equip. M.R. L.M.	Fig. and Index
	—	RUDDER TO FIN AND FUSELAGE ATTACHMENT DETAILS (E.A1.00.57) Consisting of:—	—	—	—	4/8
4730	E.A1.32.203	BOLT, special attachment, rudder to fin, top hinge ..	2	S11	C	4/27
4731	E.A1.32.205	BOLT, special attachment, rudder to fin, top hinge ..	4	S11	C	4/26
28M/4095931	A27/SS	NUT, 3/4" BSF slotted	1	—	C	4/15
28P/1221025	SP90/H16	PIN, split, 5/32" x 2" long	1	—	C	4/16
3667	E.A3.33.219	WASHER, special sealing	1	L40	C	4/14
	—	REAR FAIRING TO FUSELAGE ATTACHMENT DETAILS (E.G7.00.59). Consisting of:—	—	—	—	4/17
28D/1008151	A25/4E	BOLT, 1/4" BSF hex. head, ".85 long	2	—	C	4/3
28M/1011467	A27/ES	NUT, 1/4" BSF slotted	2	—	C	4/7
28M/9480017	AGS.2001/E/1	NUT, stiff, 1/4" BSF	4	—	C	4/13
28P/9527619	SP90/C7	PIN, split, 1/16" dia. x 1" long	2	—	C	4/5
1028	EEAS.1/3C	SCREW, 2 BA 120° c'sk head	4	S96	C	4/6
28W/9419487	SP16/E	WASHER, 1/4" BSF plain	2	—	C	4/4
	—	TAILPLANE SEALING PLATES ATTACHMENT DETAILS (E.A1.00.61) Consisting of:—	—	—	—	2/1
28S/9435717	A33/C20	SCREW, 2 BA c'sk head	62	—	C	2/2
	—	CONTROLS TO RUDDER AND ELEVATOR ATTACHMENT DETAILS (E.A1.00.63) Consisting of:—	—	—	—	2/5
67	EEAS.13/1	BOLT, special, connecting control, rod to rudder	2	S96	C	2/19
68	EEAS.14	BUSH, connecting rod	2	S96	C	2/17
3569	EEAS.63/E	NUT, slotted, control tube connecting belt	2	S96	C	2/15
3570	EEAS.127	PIECE, distance, control tube connection	2	S96	C	2/16
28P/9527619	SP90/C7	PIN, split	2	—	C	2/18

MISCELLANEOUS ATTACHMENT DETAILS

Part Number	Description	No. Off	Matl. Spec.	Plate No.
-	DROP TANK TO WING ATTACHMENT DETAILS, PORT (EG7.00.61) (See page Q1)	-	-	
-	DROP TANK TO WING ATTACHMENT DETAILS, STARBOARD (EG7.00.62) (See page Q1)	-	-	
-	WINDOW DISPENSER TO WING ATTACHMENT DETAILS, PORT (EG7.00.81)	-	-	5/1
	Consisting of:			
EA1.20.2031	. BOLT, explosive	3	L40	5/14
EG7.81.2795	. DETONATOR, forward explosive bolt, group	1	-	5/3
	Consisting of:			
EG7.81.2081	. . CONDUIT, DETONATOR, ASSEMBLY (Pre Mod.5267)	1	-	5/6
EG7.81.4023	. . CONDUIT, DETONATOR, ASSEMBLY (Mod.5267)	1	-	
	Spares for:			
EA1.81.939	. . . PLUG, detonator	1	-	5/13
A.E.I.	. . . TUBING, P.T.F.E.	QR	-	5/9
TWT/11	. . . DETONATOR, No.109, Mk.2	1	-	5/17
12G/9635205	. . . SLEEVE, 1" long	QR	-	5/10
EEAS146/6	. . . SPRING	1	-	5/15
EA1.81.938	. . . TUBE, detonator	1	-	5/16
EA1.81.428	. . . DETONATOR, REAR OUTBOARD EXPLOSIVE BOLT, GROUP	1	-	5/5
EG7.81.2797	Consisting of:			
EG7.81.2082	. . CONDUIT, DETONATOR, ASSEMBLY (Pre Mod.5267)	1	-	5/4
EG7.81.4025	. . CONDUIT, DETONATOR, ASSEMBLY (Mod.5267)	1	-	
	Spares for:			
EA1.81.939	. . . PLUG, detonator	1	-	5/13
A.E.I.	. . . TUBING, P.T.F.E.	QR	-	5/9
TWT/11	. . . DETONATOR, No.109, Mk.2	1	-	5/17
12G/9635205	. . . SLEEVE, 1" long	QR	-	5/10
EEAS146/6	. . . SPRING	1	-	5/15
EA1.81.938	. . . TUBE, detonator	1	-	5/16
EA1.81.428	. . . DETONATOR, REAR INBOARD EXPLOSIVE BOLT, GROUP	1	-	5/8
EG7.81.2817	Consisting of:			
EG7.81.2819	. . CONDUIT, DETONATOR, ASSEMBLY (Pre Mod.5267)	1	-	5/7
EG7.81.4027	. . CONDUIT, DETONATOR, ASSEMBLY (Mod.5267)	1	-	
	Spares for:			
EA1.81.939	. . . PLUG, detonator	1	-	5/13

R

R

MISCELLANEOUS ATTACHMENT DETAILS

Part Number	Description 1 2 3 4 5 6	No. Off	Mati. Spec.	Plate No.
R A.E.I. TWT/11 12G/9635205 EEAS146/6 EA1.81.938 EA1.81.428 R AGS2002/Q1 EA1.20.8833 EA1.20.10505 -	. . . TUBING, P.T.F.E. . . . DETONATOR, No.109, Mk.2 . . . SLEEVE, 1" long . . . SPRING . . . TUBE, detonator . NUT, stiff, 5/8" BSF . WASHER, special, explosive bolt . WASHER, special, explosive bolt WINDOW, DISPENSER TO WING ATTACHMENT DETAILS, STARBOARD (EG7.00.82) Spares for this assembly are identical to those for assembly Part No.EG7.00.81 on page K5	QR 1 QR 1 1 3 3 3 -	- - - - - - L40 DTD124 -	5/9 5/17 5/10 5/15 5/16 5/11 5/18 5/12 5/2

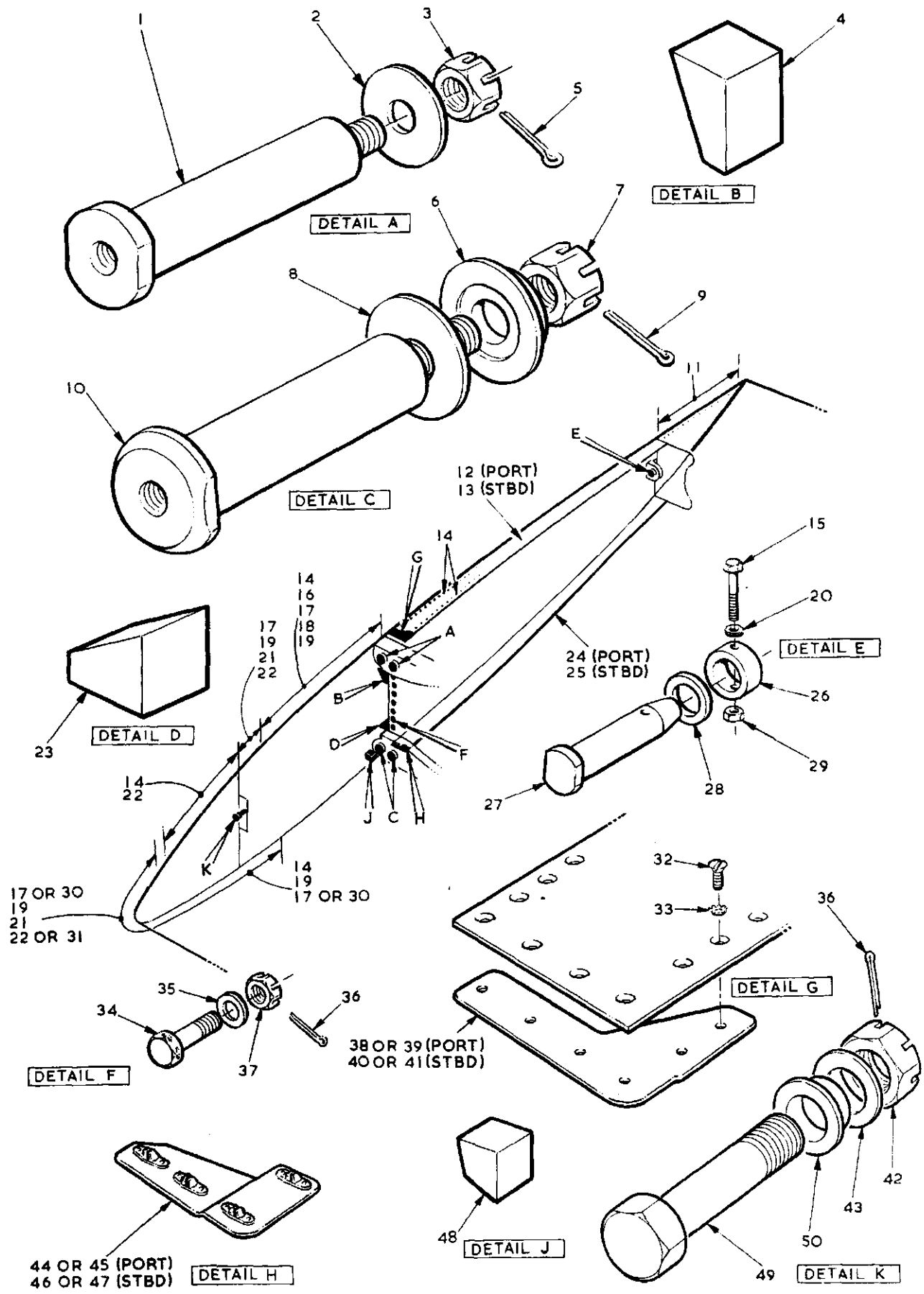


FIG. I MISCELLANEOUS ATTACHMENT DETAILS
Restricted

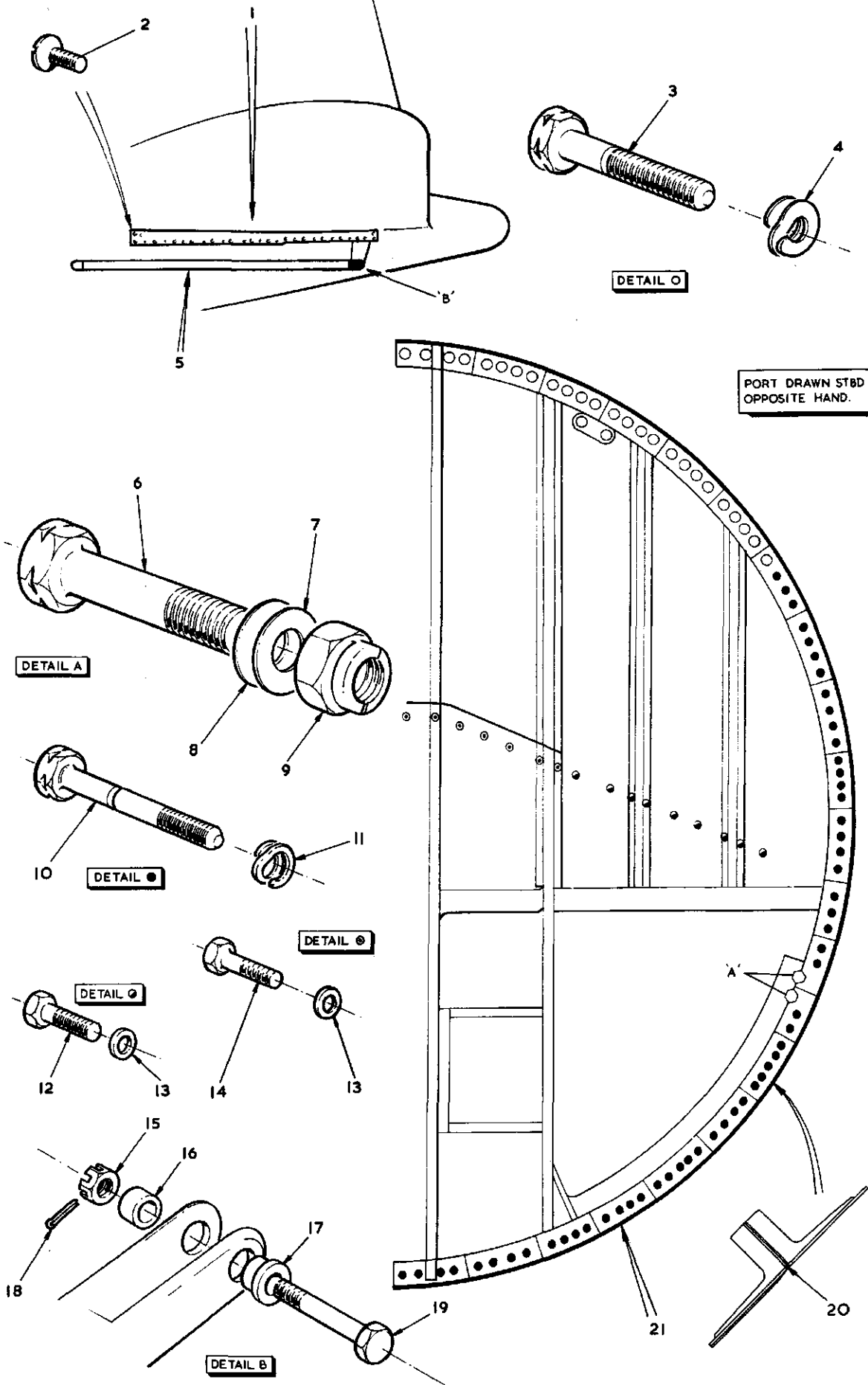


FIG 2 MISCELLANEOUS ATTACHMENT DETAILS
Restricted

Restricted

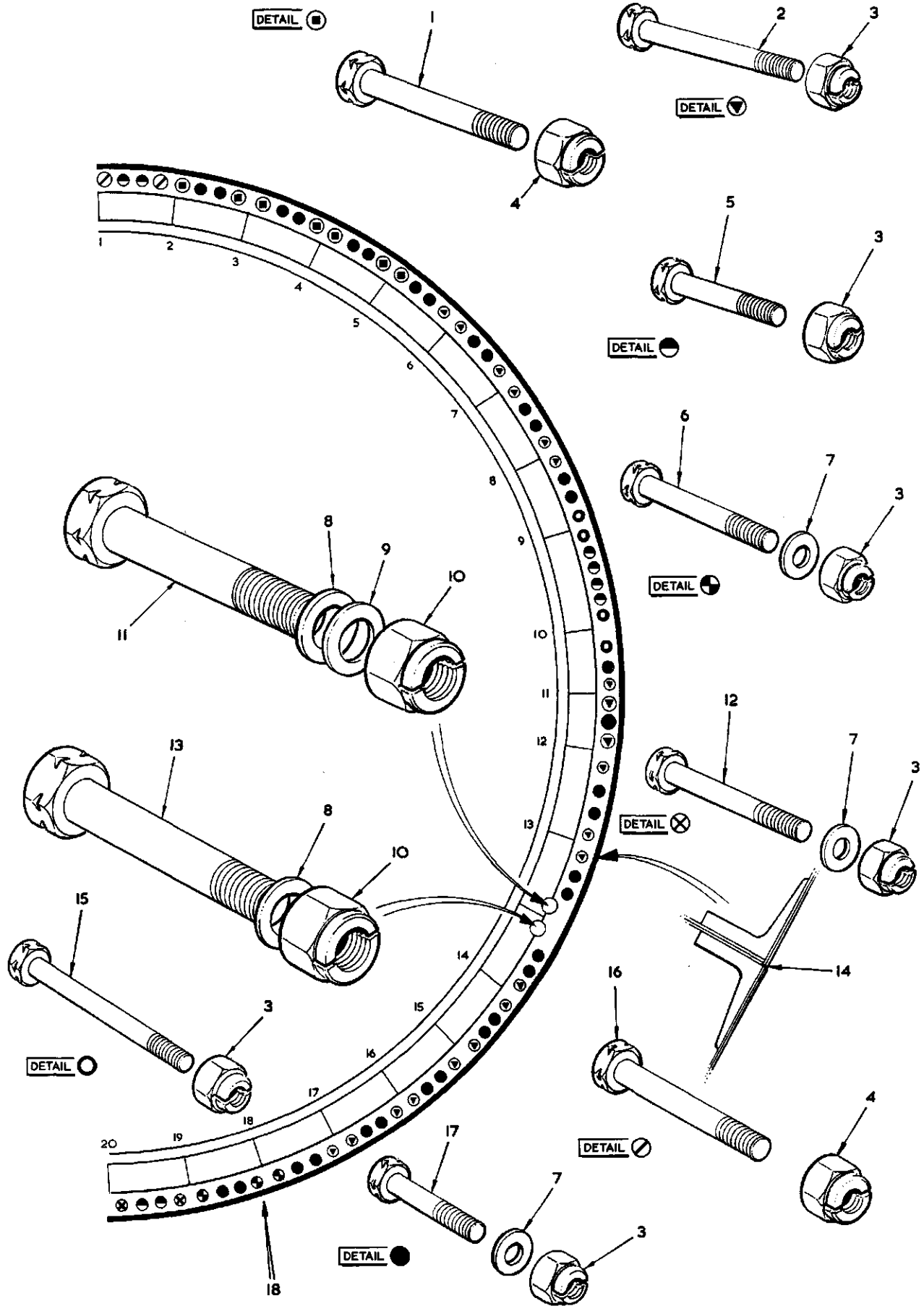


FIG. 3 MISCELLANEOUS ATTACHMENT DETAILS

Restricted

T.MK.17 SECT. K

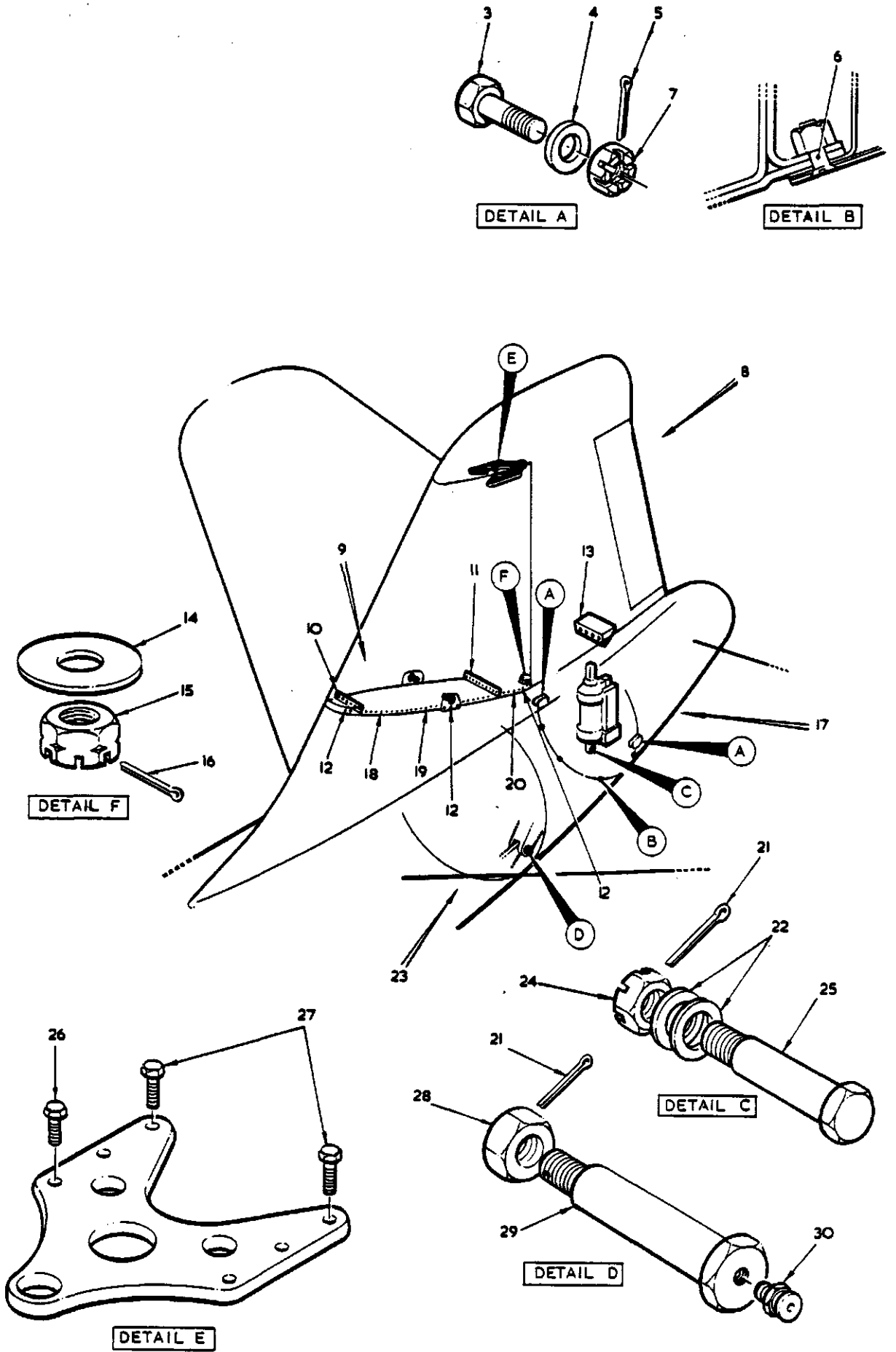


FIG. 4 MISCELLANEOUS ATTACHMENT DETAILS

T MK.17 SECT. K

Restricted

AL 8

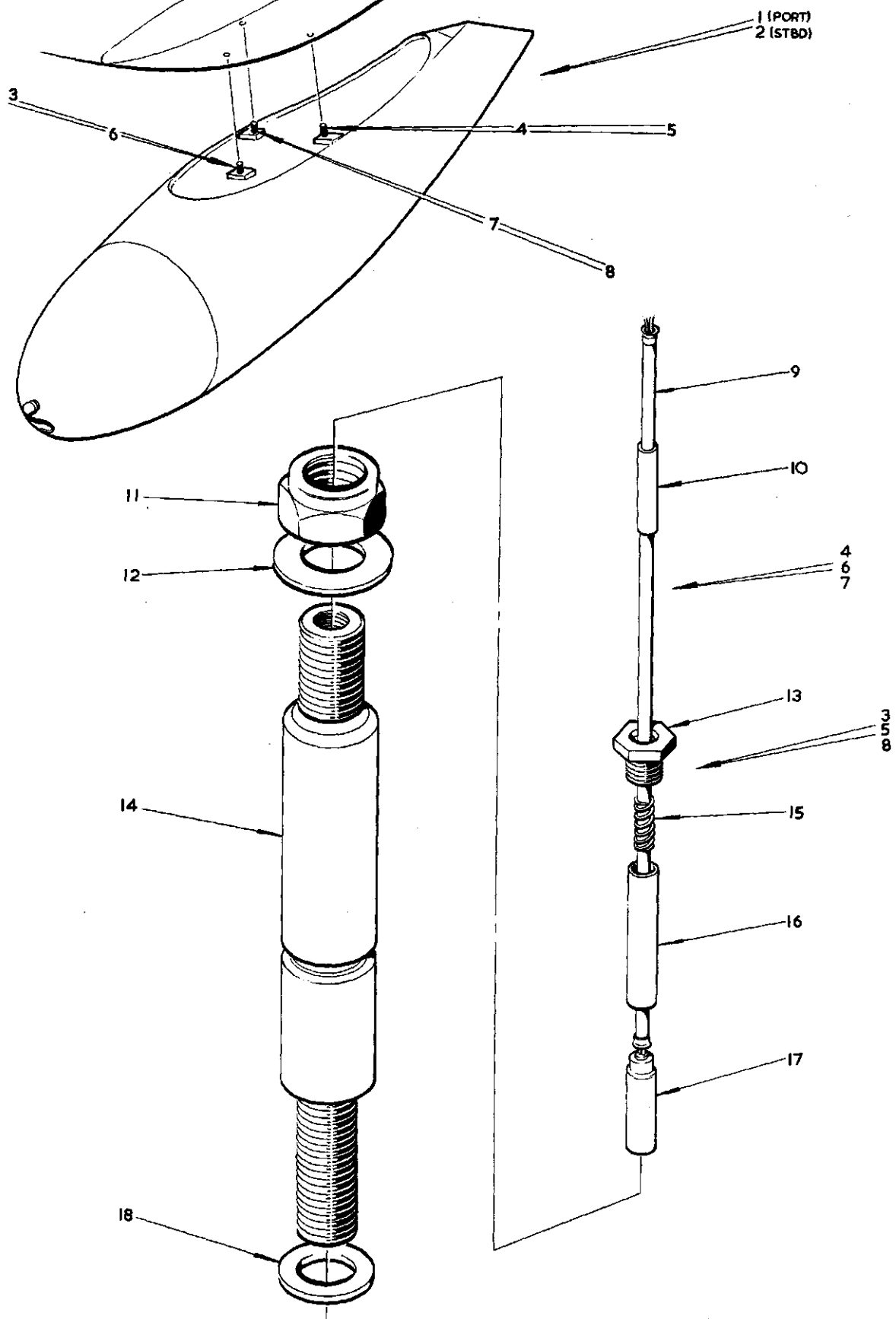


FIG 5 MISCELLANEOUS ATTACHMENTS DETAILS
Restricted

TMK 17 SECT K

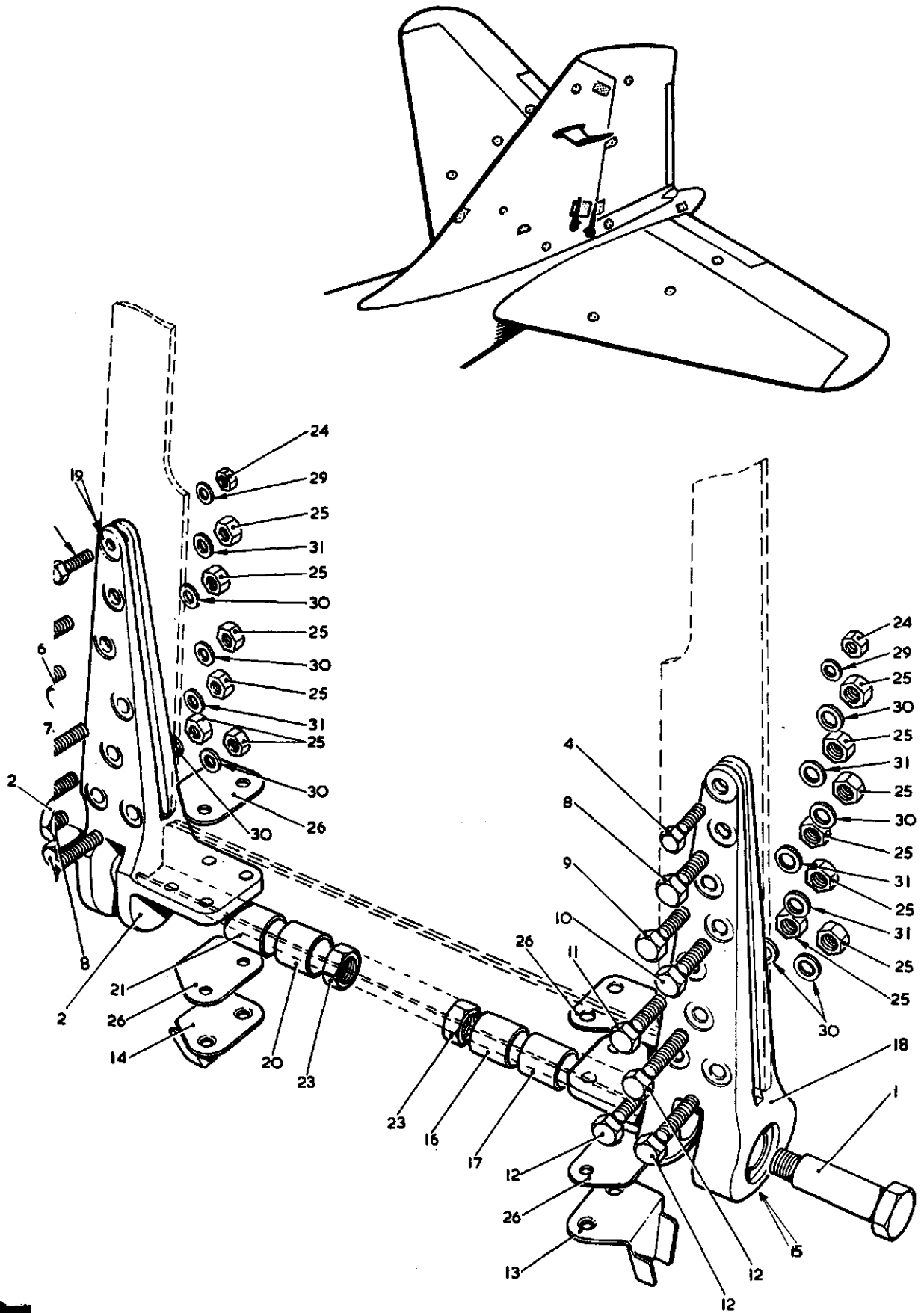


FIG. 6 FIN TO FUSELAGE ATTACHMENT DETAILS

This file was downloaded
from the RTFM Library.

Link: www.scottbouch.com/rtfm

Please see site for usage terms,
and more aircraft documents.

