

Chapter 4 FLYING CONTROLS

ILLUSTRATION

Fig

Modified controls in inner plane ... 1

1. To provide adequate clearance, during wing fold operations, for the aileron cable tension regulator access panel and support structure which projects inboard from each outer plane root rib, the aileron control cables and pulleys outboard of rib 104 in each inner plane have been repositioned as shown on fig 1. These changes are of a minor nature and do not effect the operation or rigging of the aileron control circuit. In all other respects, the flying controls are identical to those described and illustrated in A.P. 101B-1202-1A, Cover 2, Sect. 3, Chap. 4.

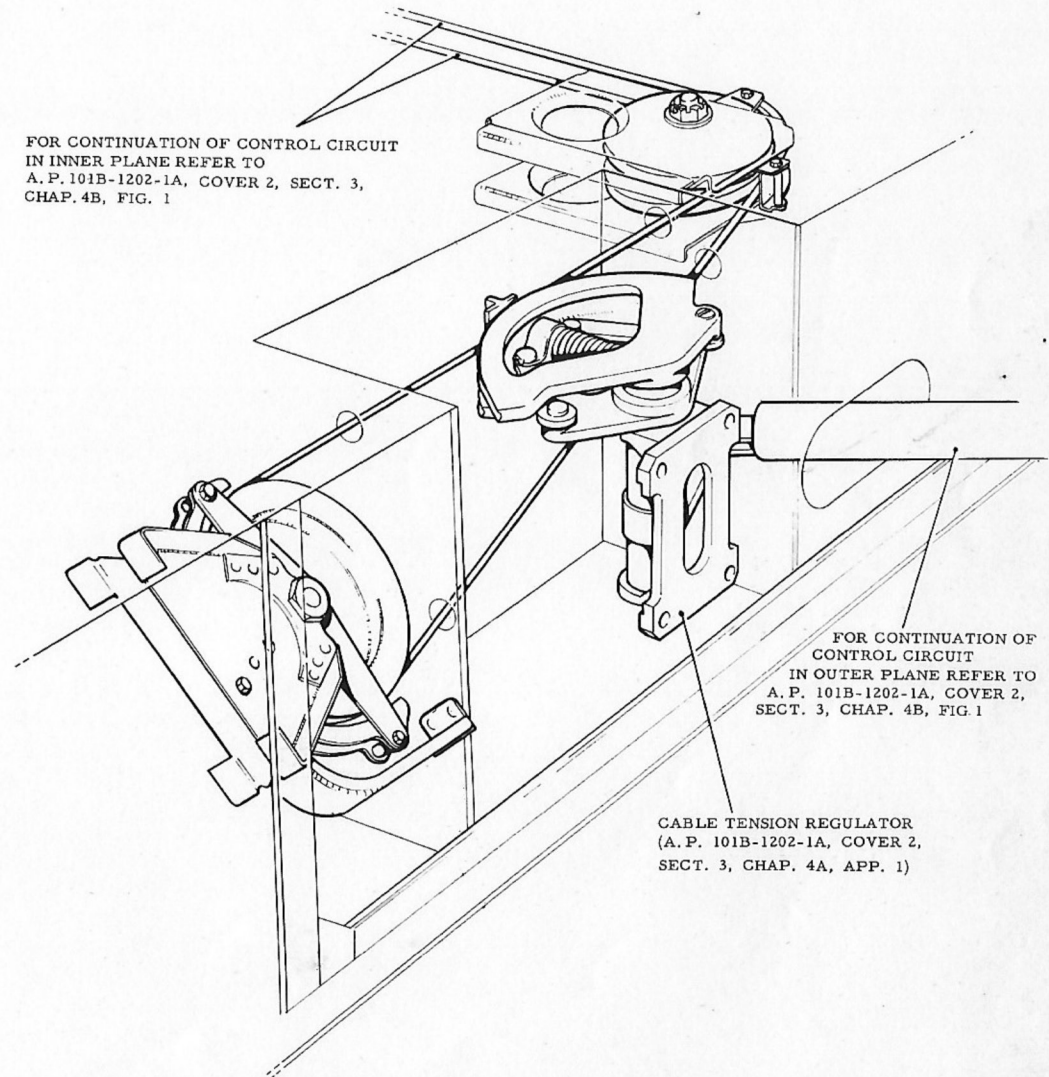


Fig. 1. Modified controls in inner plane