

This leaf issued April, 1953

A.P.4347, Vol. 6, Part 1

CHAPTER 6

ENGINE NACELLE

CHAP.

6

RESTRICTED

CHAPTER 6 ENGINE NACELLE

LIST OF CONTENTS

	Para.
General	1
◀ Engine attachments-Mk.4 & 11 ▶	
aircraft	2
Engine attachments-Mk.6,9 & 10	
aircraft	3
Repair prohibitions	4

LIST OF ILLUSTRATIONS

	Fig.
◀ Key diagram of engine mounting- Mk.4 & 11 ▶	1
Key diagram of engine mounting- Mk.6, 9 and 10	2

General

1. As the engine is contained within the fuselage and is inserted and withdrawn with the rear fuselage removed at the transport joint (frame 40), the only structure to be considered is that comprising attachment points for the engine in the centre fuselage. Instructions for the removal of the engine may be found in Vol.1, Sect.4, Chap.1 of this Air Publication.

◀ **Engine attachments, Mk.4 and 11 (fig.1)** ▶

2. The Avon engine of the Mk.4 and 11 is secured to each side of frame 34 by an adjustable link, while the rear mountings at frame 40A consist of a block and cap

held together with a U-bolt, at both port and starboard sides of the fuselage.

Engine attachments Mk.6, 9 and 10 aircraft (fig.2)

3. The Avon engine of the Mk.6, 9 and 10, is suspended by two links just aft of frame 34; while the rear mountings, consisting of blocks and caps, are situated at frame 40A.

Repair prohibitions

4. Repairs are not permitted to the engine mounting attachments, and damaged parts should therefore be renewed.

KEY TO FIG.1

(Key diagram of Engine Mounting Mk.4 and 11)

Key No.	Part No.	Description
Forward Mounting		
1	F.188580	Ball end
2	A.186359	Eye end
3	F.166531	Turnbuckle
4	A.186360	Fork end
Rear Mounting		
5	F.186444	Bolt
6	F.166527	U-bolt
7	B.186358	Block
8	A.186522	Cap

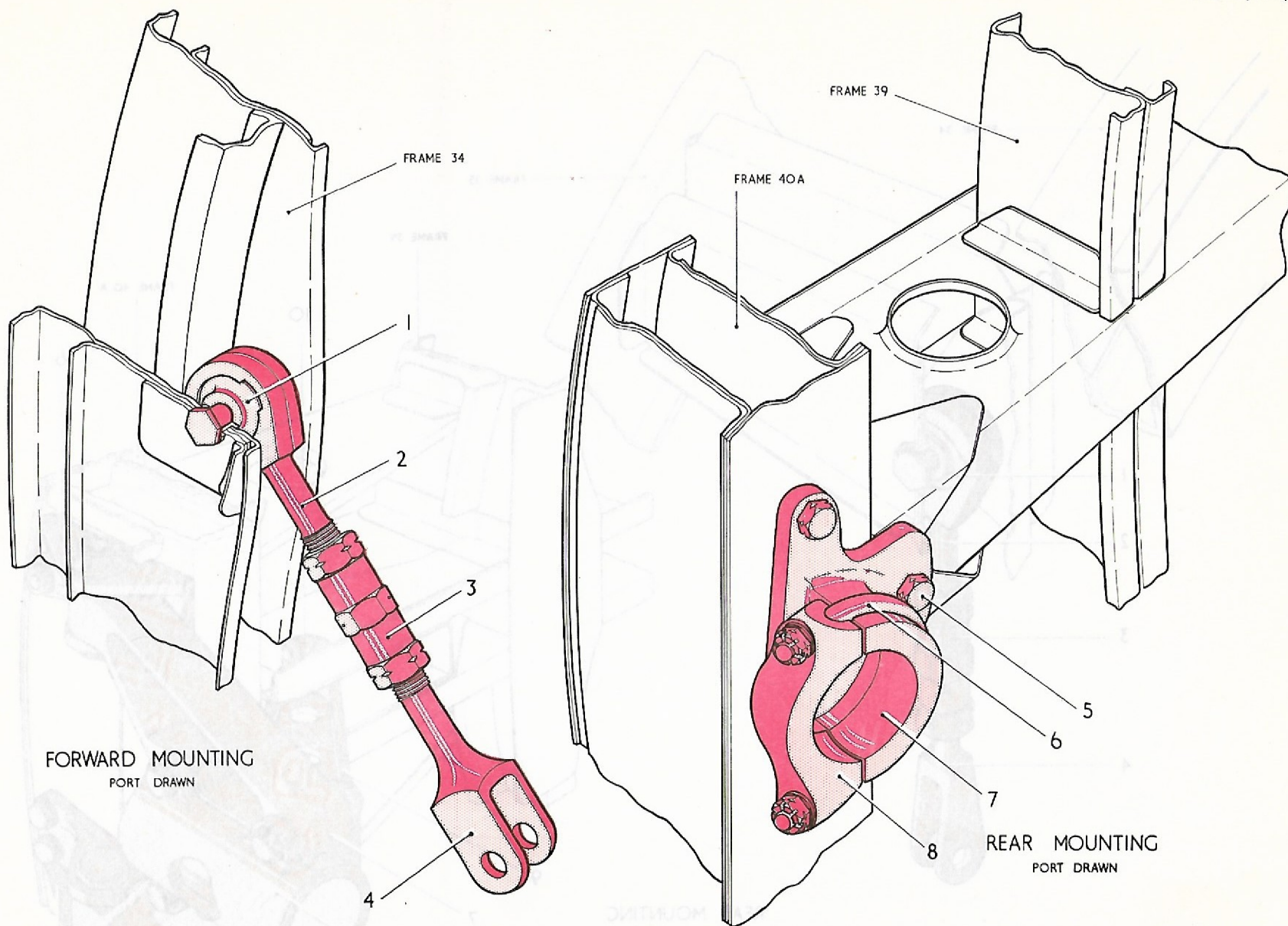


FIG.1 KEY DIAGRAM OF ENGINE MOUNTING -MK.4 & II

RESTRICTED

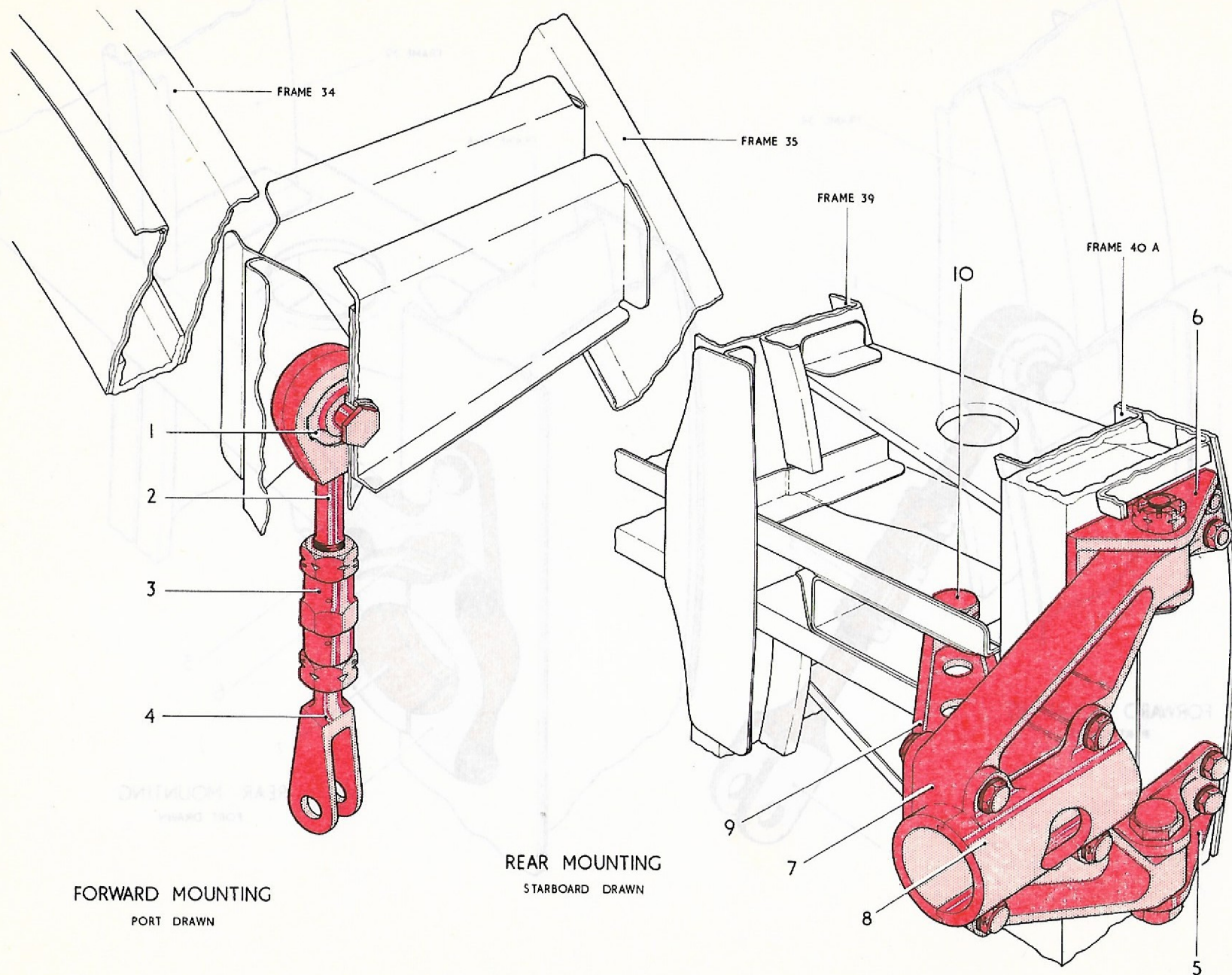


FIG. 2 KEY DIAGRAM OF ENGINE MOUNTING - MK. 6, 9 & 10

RESTRICTED

KEY TO FIG.2

(Key Diagram of Engine Mounting Mk.6, 9 and 10)

Key No.	Part No.		Description	
	Port	Starboard		
Front Mounting				
1	-	F.188580	-	Ball end
2	-	A.186359	-	Eye bolt
3	-	F.166531	-	Turn buckle
4	-	A.193449	-	Fork end
Rear Mounting				
5	A.200266	-	A.200267	Lower hinge bracket
6	A.200268	-	A.200269	Upper hinge bracket
7	-	B.200548/1	-	Hinge fitting
8	-	B.200548/2	-	Cap for hinge fitting
9	-	B.200549	-	Mounting bracket
10	-	A.193903	-	Bolt

Note:- Hinge fitting and cap Part No. B.200548, Items 1 and 2, are matched parts and must be renewed together.

Items that are not 'handed' are shown in the centre column



This file was downloaded
from the RTFM Library.

Link: www.scottbouch.com/rtfm

Please see site for usage terms,
and more aircraft documents.

ENGINE
INHIBITED
DO NOT
TURN
PROP