

CHAPTER 5 HOOD MECHANISM

(Completely revised)

LIST OF CONTENTS

	<i>Para.</i>
<i>Hood winding gear</i>	<i>1</i>
<i>Hood locks</i>	<i>2</i>

LIST OF SCHEDULES

	<i>Schedule</i>
<i>Wear limits for hood winding gear... ..</i>	<i>1/1 to 1/5</i>

LIST OF ILLUSTRATIONS

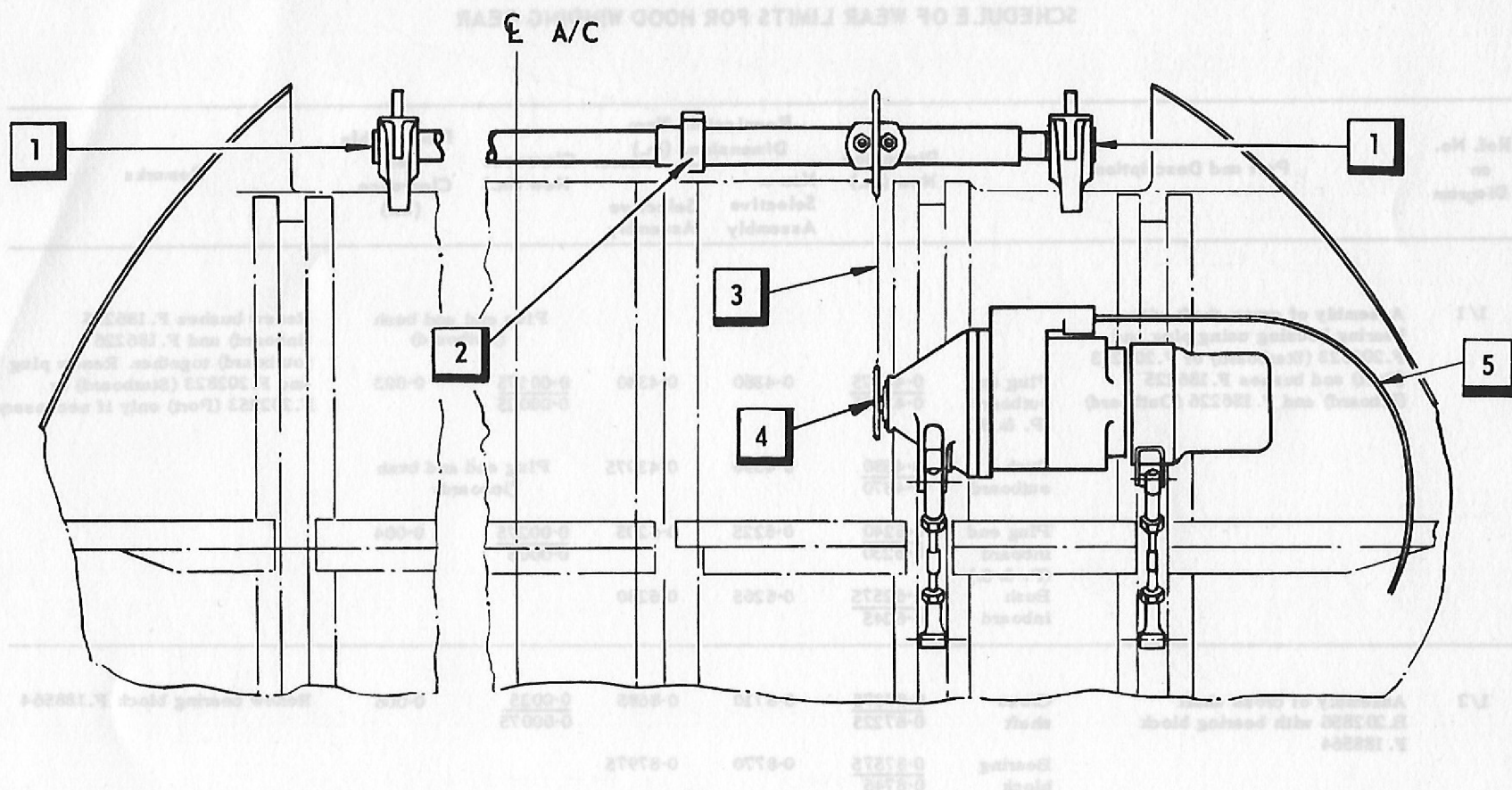
	<i>Fig.</i>
<i>Bearing location diagram for hood winding gear</i>	<i>1</i>
<i>Details for hood winding gear</i>	<i>1/1, 1/2 & 1/4</i>

Hood winding gear

1. The hood slides aft to permit access to the cockpit and is electrically operated. Details of points liable to wear may be found in fig.1.

Hood locks

2. Any wear in a lock is overcome only by complete renewal of the lock concerned. (Pt.No. A.200477 port, A.200478 starboard).



VIEW LOOKING AFT ON FRAME 14

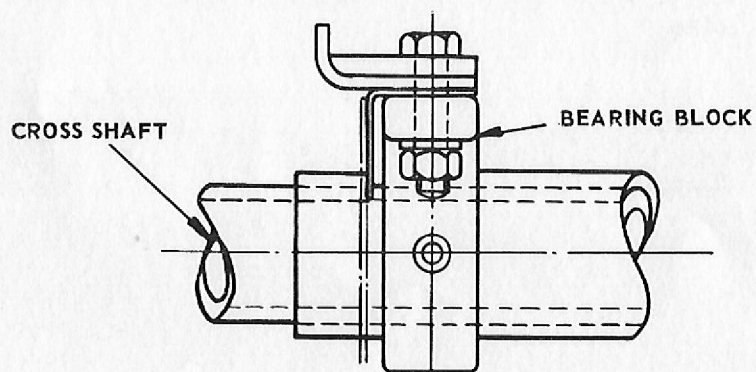
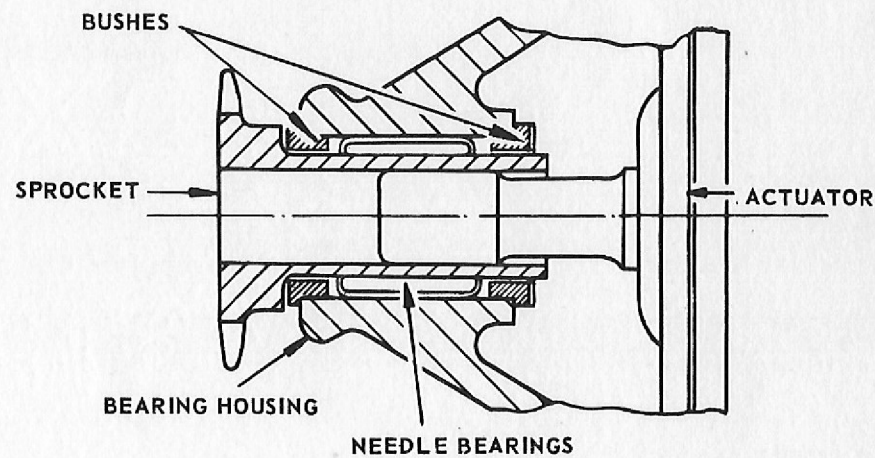
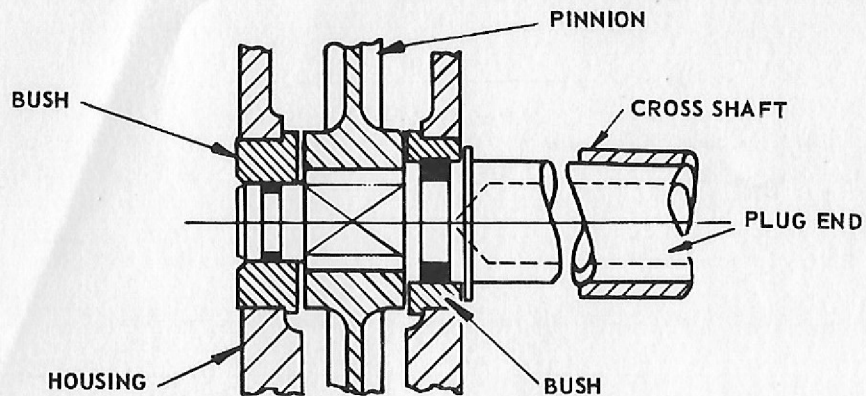
NOTE

Numbers shown thus 2
are ref. numbers for
the accompanying schedule

FIG.1 BEARING LOCATION DIAGRAM FOR HOOD WINDING GEAR

SCHEDULE OF WEAR LIMITS FOR HOOD WINDING GEAR

Ref. No. on Diagram	Part and Description	Dimension New (in.)	Permissible Worn Dimensions (in.)		Clearance New (in.)	Permissible Worn Clearance (in.)	Remarks	
			Non - Selective Assembly	Selective Assembly				
1/1	Assembly of cross shaft with bearing housing using plug end F.202823 (Starboard) or F.202253 (Port) and bushes F.186225 (Inboard) and F.186226 (Outboard)	Plug end outboard (P. & S.)	$\frac{0.43675}{0.43625}$	0.4360	0.4340	$\frac{0.00175}{0.00025}$	0.003	Renew bushes F.186225 (inboard) and F.186226 (outboard) together. Renew plug end F.202823 (Starboard) or F.202253 (Port) only if necessary
		Bush outboard	$\frac{0.4380}{0.4370}$	0.4390	0.43975	Plug end and bush (inboard)		
		Plug end inboard (P. & S.)	$\frac{0.6240}{0.6230}$	0.6225	0.6205	$\frac{0.00275}{0.0005}$	0.004	
		Bush inboard	$\frac{0.62575}{0.6245}$	0.6265	0.6280			
1/2	Assembly of cross shaft B.202856 with bearing block F.188564	Cross shaft	$\frac{0.87375}{0.87225}$	0.8710	0.8685	$\frac{0.0035}{0.00075}$	0.006	Renew bearing block F.188564
		Bearing block	$\frac{0.87575}{0.8745}$	0.8770	0.87975			
1/3	Assembly of chain and sprockets	Chain adjustment to be made by use of tension rods. In the event of excessive wear or the presence of tight links the chain is to be renewed A.S.924.48.P						
1/4	Assembly of sprocket with actuator bearing housing using bushes F.186230 and 'Torrington' needle bearings B.1012	See Chapter 1 for needle bearings. If excessive end float in actuator is found to be due to bushes F.186230, they are to be renewed						
1/5	Control cable assembly	No backlash in the control cable is permitted						



DETAILS FOR HOOD WINDING GEAR

RESTRICTED



This file was downloaded
from the RTFM Library.

Link: www.scottbouch.com/rtfm

Please see site for usage terms,
and more aircraft documents.