

CHAPTER 6 ENGINE NACELLE

LIST OF CONTENTS

| | <i>Para.</i> |
|-----------------------------------|--------------|
| <i>General</i> | 1 |
| <i>Engine attachments</i> | 2 |
| <i>Repair prohibitions</i> | 3 |

LIST OF ILLUSTRATIONS

| | <i>Fig.</i> |
|----------------------------------------------|-------------|
| <i>Key diagram of engine mounting</i> | 1 |

General

1. As the engine is contained within the fuselage and is inserted and withdrawn with the rear fuselage removed at the transport joint (frame 40), the only structure to be considered is that comprising attachment points for the engine in the centre fuselage. Instructions for the removal of the engine may be found in Vol.1, Sect.4, Chap.1 of this Publication.

Engine attachments

2. The Avon engine is secured to each side of frame 34 by an adjustable link, while the rear mountings at frame 40A consist of a block and cap held together with a U-bolt, at both port and starboard sides of the fuselage.

Repair prohibitions

3. Repairs are not permitted to the engine mounting attachments, and damaged parts should therefore be renewed.

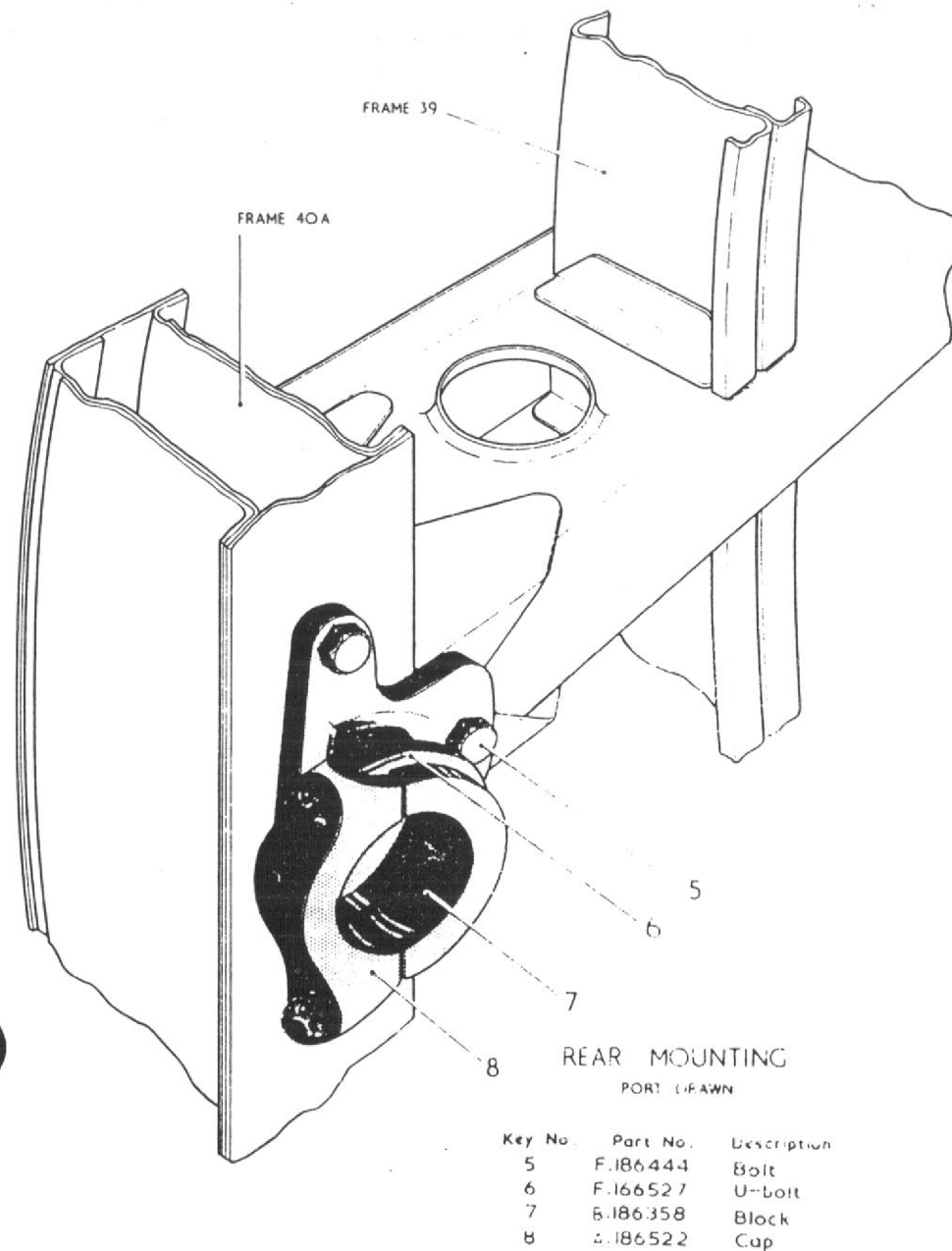
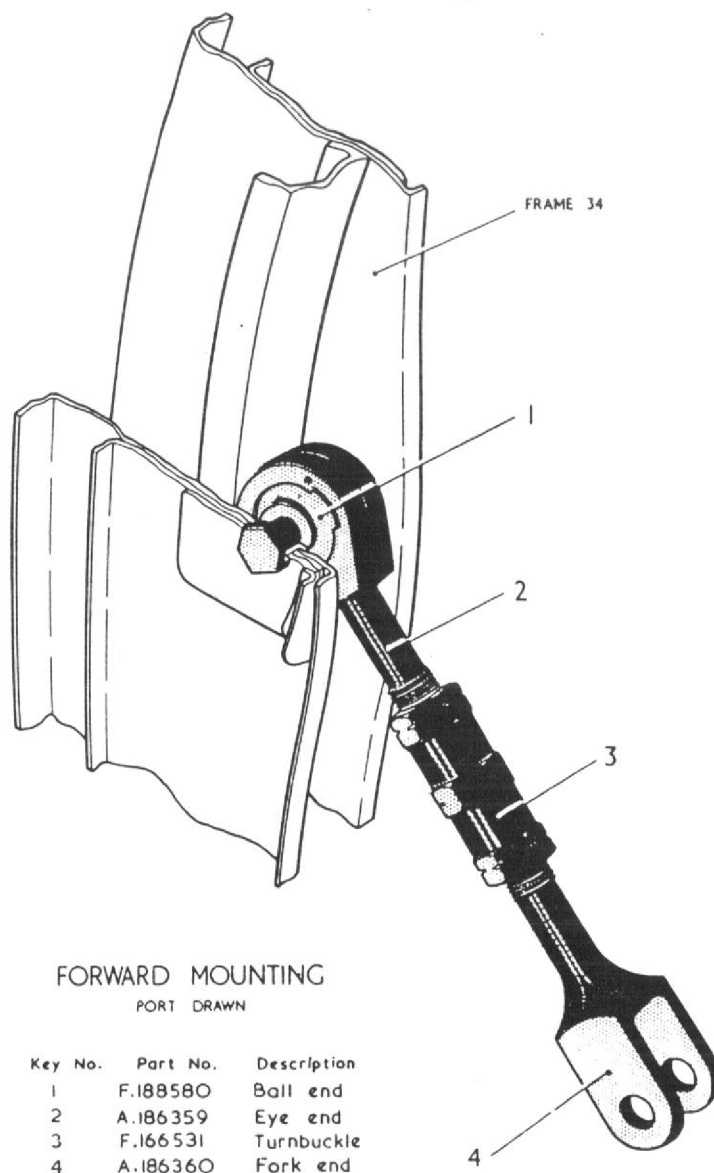


FIG.1. KEY DIAGRAM OF ENGINE MOUNTING

RESTRICTED

This file was downloaded
from the RTFM Library.

Link: www.scottbouch.com/rtfm

Please see site for usage terms,
and more aircraft documents.

