

## Chapter 5A - CHANGE OF ROLE - FERRYING

## LIST OF CONTENTS

|                            | Para. |   | Para. |   | Para. |
|----------------------------|-------|---|-------|---|-------|
| Introduction ... ..        | 1     | Stowing luggage, spare braking parachute, servicing equipment and documents ... | 3     | Removal of luggage, spare braking parachute, servicing equipment, documents and removable fittings ... .. | 4     |
| Removable equipment ... .. | 2     |   |       |   |       |

## LIST OF ILLUSTRATIONS

|   | Fig. |   | Fig. |
|---|------|---|------|
| Stowing luggage, spare braking parachute, servicing equipment and documents ... | 1    | Fitting blanking plates to starboard radio bay access door ... .. | 2    |

## TABLE

|                                   | Table |
|-----------------------------------|-------|
| Ferry role removable parts ... .. | 1     |

## Introduction

1. This chapter contains information and instructions for stowing personal luggage, spare braking parachute, servicing equipment and documents, during preparation for ferry flight of aircraft embodying the fixed fittings of Modification 1113.

## Removable equipment

2. The removable equipment for the ferry role is listed in Table 1.

Stowing luggage, spare braking parachute, servicing equipment and documents (fig. 1 and 2)

## Note . . .

*The dimensions and maximum weight of the pilot's suitcase must comply with the following limitations :—*

**Size :** Between 24½ in. long × 14 in. wide × 8 in. deep maximum and 20 in. long × 13½ in. wide × 6 in. deep minimum.

**Weight :** The packed weight must not exceed 30 lb.

3. The procedure for stowing the pilot's personal luggage, spare braking parachute, servicing equipment, documents and radio crystals is as follows :—

- (1) Remove the starboard radio bay access door.
- (2) Remove the port and starboard link containers.
- (3) Remove the starboard outboard case chute from the aircraft, and the starboard inboard case chute from the starboard radio bay access door.
- (4) Modify the starboard radio bay access door as shown in fig. 2 and fit the blanking plates, Part No. A.260681 and A.260682, using bolts, Part No. AS.1242.1.C, nuts, Part No. A.G.S.2002.C.1 and washers, Part No. S.P.15.C.
- (5) Fit the top bearer, Part No. A.258429 between the mounting brackets on frames 16 and 19 and secure with the pip-pins, Part No. A.413 attached to the mounting brackets (fig. 1).

- (6) Fit the forward and aft mounting trays, Part No. C.258425 and C.258426 to the suitcase and secure firmly with the two strap assemblies, Part No. B.258427, ensuring that the straps pass through the guides on the mounting trays.

- (7) Fit the bottom bearer, Part No. B.258428, through the mounting rings at the bottom of the mounting trays and secure the aft mounting tray to the bottom bearer with pip-pin, Part No. A.518.

- (8) Offer up the mounting tray, suitcase and bearer assembly into the radio bay and locate the top locating channels about the top bearer and fit the aft end of the bottom bearer into the attachment bracket for the outboard case chute at frame 19 and secure with the pip-pin. At the same time feed the forward end of the bottom bearer into the mounting bracket on the aft face of the gun package, and secure with the pip-pin.

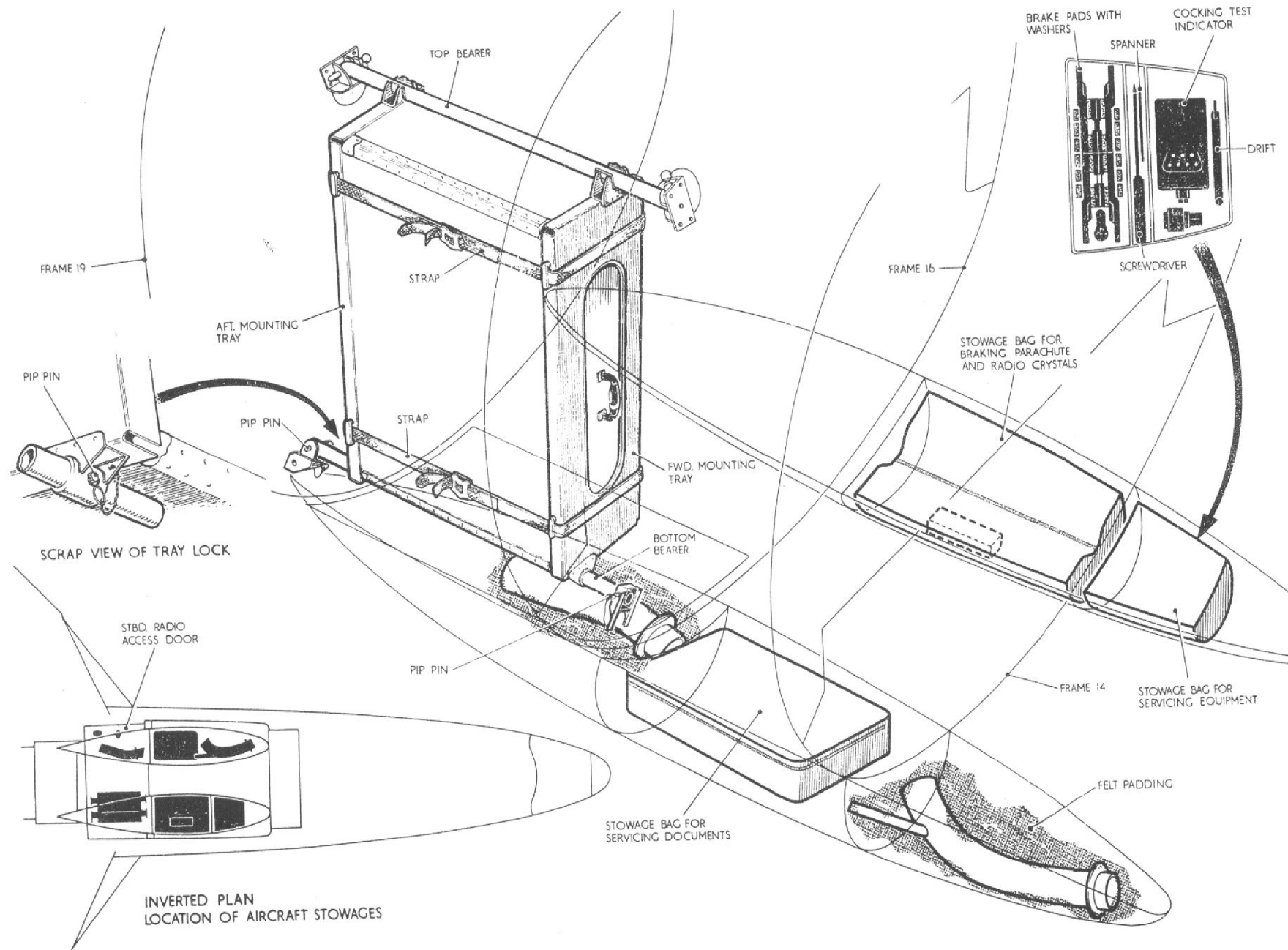


Fig.1 Stowing luggage, spare braking parachute and servicing documents etc.

Minor amendment

- (9) Fit the stowage bag, Part No. D.254440, containing the servicing equipment in the port link container.
- (10) Fit the stowage bag, Part No. D.252121, containing the spare braking parachute and the stowage for radio crystals, Part No. A.255935 in the port link container.
- (11) Fit the stowage bag for the servicing documents, Part No. D.255931 containing the servicing documents in the starboard link container.

- (12) Wrap the starboard outboard case chute adequately with felt or similar material and pack securely in the forward portion of the starboard link container.
- (13) Wrap the starboard inboard case chute adequately with felt or similar material and pack securely in the aft portion of the starboard link container.
- (14) Refit and secure the port and starboard link containers to the aircraft.

- (15) Refit and secure the starboard radio bay access door.

Removal of luggage, spare braking parachute, servicing equipment, documents and removable fittings

4. The removal of the luggage, spare braking parachute, servicing equipment, documents and removable parts of modification 1113 is a reversal of the procedure given in para. 3.

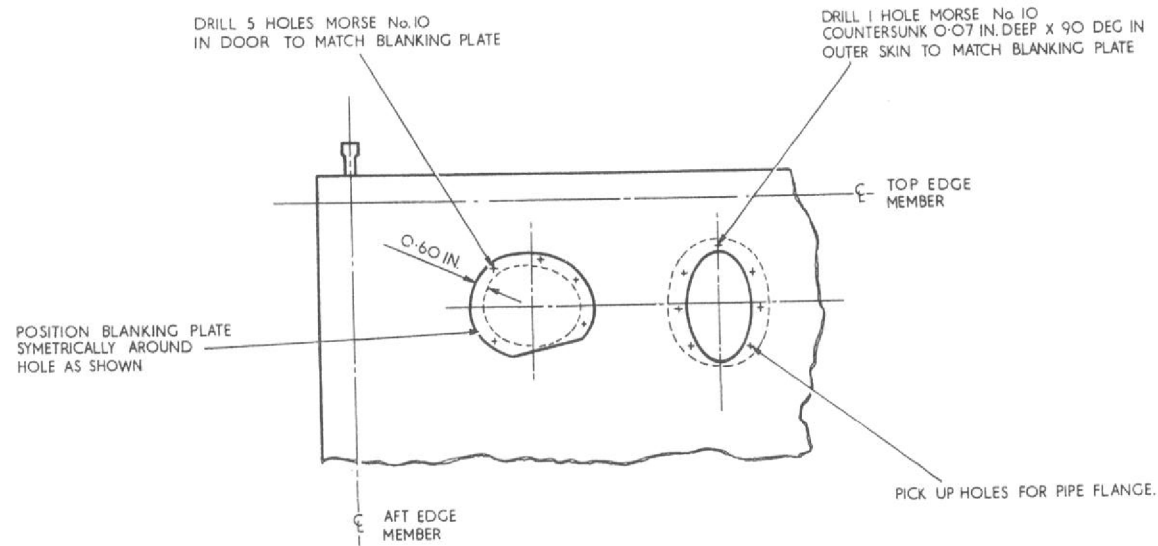


Fig. 2 Fitting blanking plates to starboard radio bay access door

TABLE 1

## Ferry role removable parts

| Sect./Ref.  | Part No.       | Description                              | Qty. |
|-------------|----------------|--|------|
| —           | D.254440       | Bag, stowage for equipment               | 1    |
| —           | B.258428       | Bearer, bottom                           | 1    |
| —           | A.258429       | Bearer, top                              | 1    |
| 28D/1007975 | AS.1242.1.C    | Bolt ,2 B.A., C/S head                   | 12   |
| —           | D.252121       | Container, braking parachute             | 1    |
| —           | D.255931       | Container for servicing documents        | 1    |
| 28M/10328   | A.G.S.2002.C.1 | Nut, 2 B.A.                              | 12   |
| 28FP/1098   | A.518          | Pip-pin, type A ( <i>Aviation Dev.</i> ) | 1    |
| —           | B.258427       | Strap assembly                           | 2    |
| —           | A.255935       | Stowage for radio crystals               | 1    |
| —           | C.258426       | Tray, mounting aft                       | 1    |
| —           | C.258425       | Tray, mounting forward                   | 1    |
| —           | A.260681       | Plate, blanking                          | 1    |
| —           | A.260682       | Plate, blanking                          | 1    |
| 28W/9419475 | S.P.15.C       | Washer                                   | 12   |



This file was downloaded  
from the RTFM Library.

Link: [www.scottbouch.com/rtfm](http://www.scottbouch.com/rtfm)

Please see site for usage terms,  
and more aircraft documents.