

## CHAPTER 6

## HYDRAULIC SYSTEM

## LIST OF CONTENTS

	Para.		Para.		Para.
Introduction	1	Wheel brakes	22	Testing air brake on ground (undercarriage up)	38
		Air brake	23	Checking flap pressure regulating valve	39
		Operation	24	Operational tests	40
Description				Testing emergency air system	41
Supply circuit	3	Servicing		Testing the wheel brakes	42
Engine-driven pump	4	General	25	Testing undercarriage emergency up selection	43
Handpump	5	Power control selector valves—override device	26	Pressure settings and adjustment of components	44
Reservoir	6	Hydraulic reservoir	27	Draining the system	45
Filters	7	Emergency air cylinders and hydraulic accumulators	28	Filters	46
External supply couplings	8	Lubrication	29		
Emergency air supply bottles	9	Faults	30	Removal and assembly	
Hydraulic accumulators	10	Loss of pressure		General	47
Alighting gear	11	External leakage	31	Access to components	48
Undercarriage control	14	Internal leakage	33	Maxaret units	49
Emergency lowering	15	Air in system	34	Air brake jack	50
Flaps	16	Bleeding the system	35	Elevator accumulator charging valve	51
Emergency operation of flaps	18	Bleeding after use of emergency controls	36	Pipe pressure in engine starter bay —	
Aileron booster system	19	Testing air brake on ground (undercarriage down)	37	STI/Hunter/363B	52
Elevator booster system	21			Micronic filters — STI/Hunter/385	54

## LIST OF ILLUSTRATIONS

	Fig.		Fig.		Fig.
Hydraulic system diagram (sheet 1)	1	Tool operating aileron and elevator selector		Hydraulic system installation (2)	6
Hydraulic system diagram (sheet 2)	2	valves	4	Tool manipulating Micronic filter tell-tale	7
Flap synchronization test rig	3	Hydraulic system installation (1)	5	Clamp block for pipes at frame 27	8

## Introduction

1. The hydraulic system operates the alighting gear, wheel brakes, air brake, landing flaps and power-operated ailerons and elevators. The system also maintains the correct pressure in the shock absorber legs of the main undercarriage. High pressure air bottles are provided for the emergency operation of the alighting gear and flaps, whilst the emergency operation of the wheel brakes and power-

operated ailerons and elevators is accomplished by means of energy stored in hydraulic accumulators. Provision is made for the recharging of the air bottles and accumulators in-situ, the procedure being described in Sect.3, Chap.2.

2. The components used in the system are listed in the spare parts schedule and the majority of them are described in A.P.1803D and S. Vol.1. The component part numbers will be found in the master index of A.P.1803A and will enable a direct reference to be made to the applicable A.P. section and chapter. As the operation of some of the components is initiated electrically, reference should be made to Sect.5, Chap.1 for circuit details.

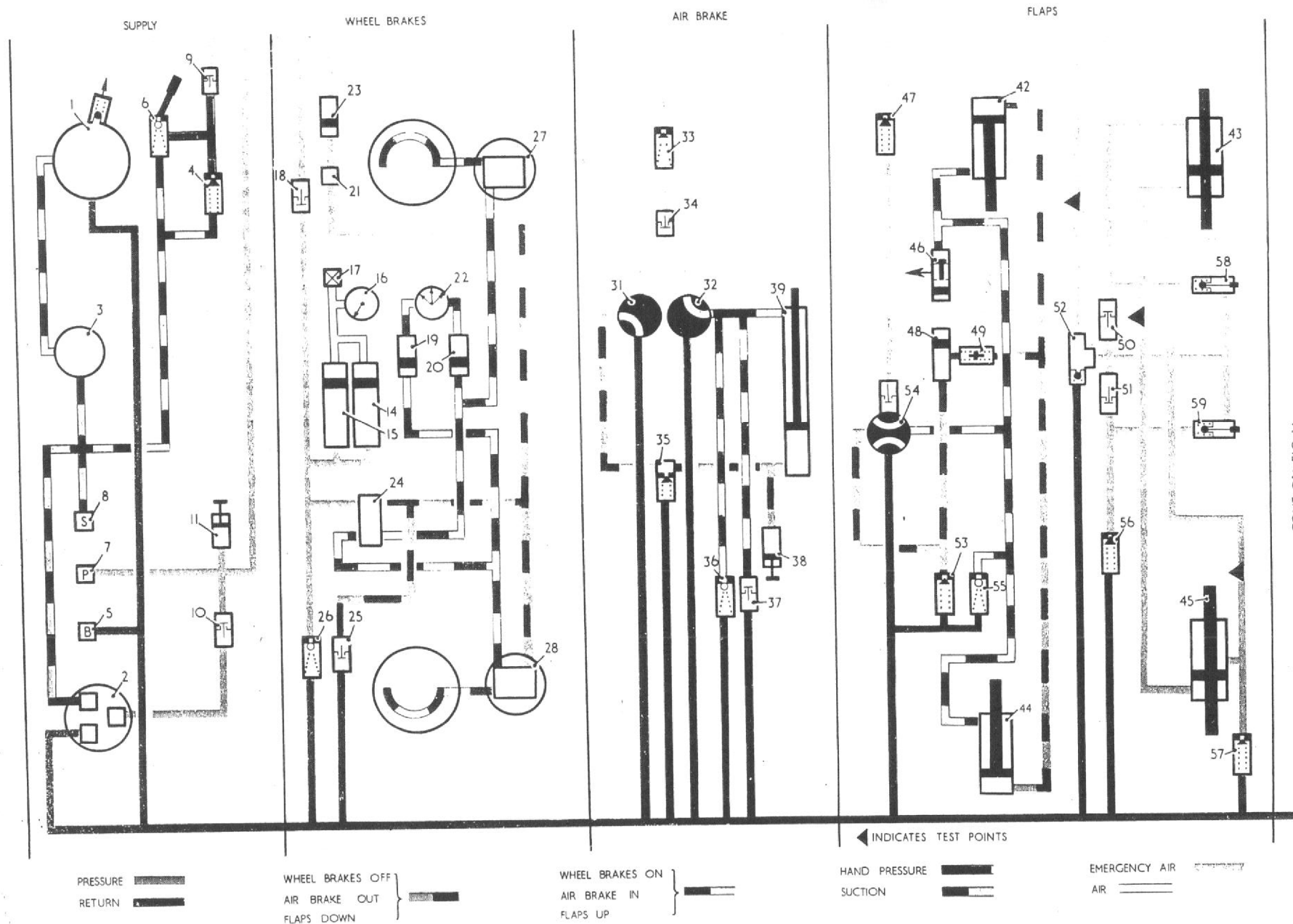


Fig.1 Hydraulic system diagram

RESTRICTED

T.P.15083

CONT ON FIG 1A

## KEY TO FIG. 1

(Hydraulic system diagram)

## SUPPLY

- 1 RESERVOIR
- 2 ENGINE-DRIVEN PUMP
- 3 OIL FILTER
- 4 PRESSURE RELIEF VALVE
- 5 EXTERNAL SUPPLY VALVE—  
BY-PASS
- 6 HANDPUMP
- 7 EXTERNAL SUPPLY VALVE—  
PRESSURE
- 8 EXTERNAL SUPPLY VALVE—  
SUCTION
- 9 NON-RETURN VALVE
- 10 NON-RETURN VALVE
- 11 PRESSURE SWITCH

## WHEEL BRAKES

- 14 ACCUMULATOR
- 15 ACCUMULATOR
- 16 ACCUMULATOR PRESSURE  
GAUGE

## WHEEL BRAKES (Continued)

- 17 CHARGING CONNECTION
- 18 NON-RETURN VALVE
- 19 PRESSURE RELAY
- 20 PRESSURE RELAY
- 21 CHOKE
- 22 TRIPLE PRESSURE GAUGE
- 23 PRESSURE RELAY
- 24 RELAY CONTROL VALVE
- 25 NON-RETURN VALVE
- 26 THERMAL RELIEF VALVE
- 27 MAXARET EQUIPMENT
- 28 MAXARET EQUIPMENT

## AIR BRAKES

- 31 MAIN SELECTOR
- 32 HIGH SPEED SELECTOR
- 33 PRESSURE REGULATOR  
VALVE
- 34 NON-RETURN VALVE
- 35 PRESSURE RELIEF VALVE
- 36 THERMAL RELIEF VALVE
- 37 NON-RETURN VALVE
- 38 PRESSURE SWITCH
- 39 JACK

## FLAPS

- 42 FLAP JACK
- 43 FLAP SYNCHRONIZING JACK
- 44 FLAP JACK
- 45 FLAP SYNCHRONIZING JACK
- 46 OIL JETTISON VALVE
- 47 PRESSURE REGULATOR  
VALVE
- 48 SHUTTLE VALVE
- 49 TWO-WAY THROTTLING  
VALVE
- 50 NON-RETURN VALVE
- 51 NON-RETURN VALVE
- 52 PRESSURE REDUCING VALVE
- 53 PRESSURE RELIEF VALVE
- 54 CONTROL VALVE
- 55 THERMAL RELIEF VALVE
- 56 PRESSURE RELIEF VALVE
- 57 PRESSURE RELIEF VALVE
- 58 SELECTOR VALVE (PRESSURE  
RELEASE)
- 59 SELECTOR VALVE (PRESSURE  
RELEASE)

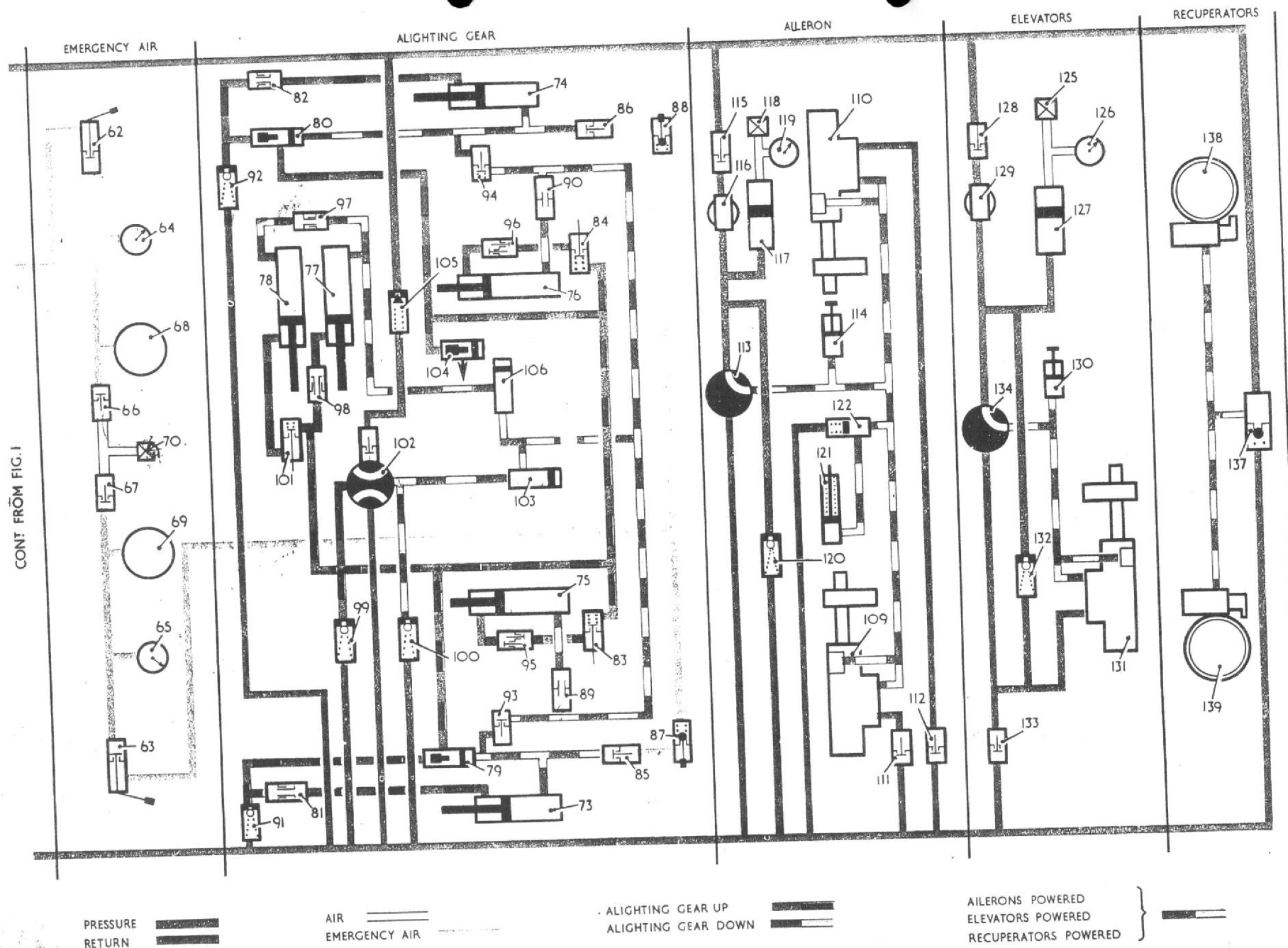


Fig.2 Hydraulic system diagram

RESTRICTED



**KEY TO FIG. 2**  
(Hydraulic system diagram)**EMERGENCY AIR**

- 62 AIR RELEASE VALVE
- 63 AIR RELEASE VALVE
- 64 EMERGENCY AIR SUPPLY  
PRESSURE GAUGE
- 65 EMERGENCY AIR SUPPLY  
PRESSURE GAUGE
- 66 NON-RETURN VALVE
- 67 NON-RETURN VALVE
- 68 EMERGENCY AIR SUPPLY  
BOTTLE
- 69 EMERGENCY AIR SUPPLY  
BOTTLE
- 70 CHARGING CONNECTION

**ALIGHTING GEAR**

- 73 MAIN U/C JACK
- 74 MAIN U/C JACK
- 75 MAIN U/C FAIRING DOOR  
JACK
- 76 MAIN U/C FAIRING DOOR  
JACK
- 77 NOSE WHEEL UNIT JACK
- 78 NOSE WHEEL UNIT FAIRING  
DOOR JACK
- 79 SEQUENCE VALVE ✓
- 80 SEQUENCE VALVE ✓
- 81 RESTRICTOR ONE WAY
- 82 RESTRICTOR ONE WAY
- 83 SEQUENCE VALVE ✓
- 84 SEQUENCE VALVE ✓
- 85 NON-RETURN VALVE

**ALIGHTING GEAR (Continued)**

- 86 NON-RETURN VALVE
- 87 PRESSURE RELEASE VALVE  
(EMERGENCY AIR)
- 88 PRESSURE RELEASE VALVE  
(EMERGENCY AIR)
- 89 RESTRICTOR
- 90 RESTRICTOR
- 91 THERMAL RELIEF VALVE
- 92 THERMAL RELIEF VALVE
- 93 ✓ SEQUENCE VALVE
- 94 ✓ SEQUENCE VALVE
- 95 PRESSURE REGULATOR  
VALVE
- 96 PRESSURE REGULATOR  
VALVE
- 97 RESTRICTOR ONE WAY
- 98 RESTRICTOR ONE WAY
- 99 THERMAL RELIEF VALVE
- 100 THERMAL RELIEF VALVE
- 101 ✓ SEQUENCE VALVE
- 102 CONTROL VALVE
- 103 SHUTTLE VALVE
- 104 OIL JETTISON VALVE
- 105 PRESSURE REGULATOR  
VALVE
- 106 SHUTTLE VALVE

**AILERONS**

- 109 AILERON HYDRO BOOSTER
- 110 AILERON HYDRO BOOSTER
- 111 NON-RETURN VALVE
- 112 NON-RETURN VALVE

**AILERONS (Continued)**

- 113 AILERON CONTROL VALVE
- 114 PRESSURE SWITCH
- 115 NON-RETURN VALVE
- 116 MICRONIC FILTER
- 117 AILERON ACCUMULATOR
- 118 CHARGING CONNECTION
- 119 ACCUMULATOR GAUGE
- 120 THERMAL RELIEF VALVE
- 121 AILERON JACK
- 122 SHUTTLE VALVE

**ELEVATORS**

- 125 CHARGING CONNECTION
- 126 ACCUMULATOR GAUGE
- 127 ELEVATOR ACCUMULATOR
- 128 NON-RETURN VALVE
- 129 MICRONIC FILTER
- 130 PRESSURE SWITCH
- 131 ELEVATOR HYDRO-BOOSTER
- 132 THERMAL RELIEF VALVE
- 133 NON-RETURN VALVE
- 134 ELEVATOR CONTROL  
VALVE

**RECUPERATOR**

- 137 PRESSURE REDUCING  
VALVE
- 138 RECUPERATOR UNIT
- 139 RECUPERATOR UNIT

## DESCRIPTION

### Supply circuit

3. The supply circuit consists mainly of a reservoir, engine-driven pump and filter. For the operation of the system on the ground when the engine is not running, a handpump is incorporated in the circuit. External supply couplings are also provided, these being connected to an external supply trolley when ground testing the system. Both the engine-driven pump and handpump deliver fluid under pressure through their own non-return valves to the main delivery line and thence to the various circuits. The delivery line from the handpump is connected back to the suction line via a pressure relief valve. When off-loaded, the engine-driven pump circulates fluid back to the reservoir. The main filter is inserted in the suction line between the reservoir and pumps and micronic filters are incorporated in the aileron and elevator control circuits. The main delivery line branches to a pressure switch which operates to illuminate a warning lamp in the cabin if the pressure falls below 600 lb/in<sup>2</sup>, thus warning the pilot to reduce speed sufficiently to permit manual operation of the flying controls. An additional warning is provided which generates an aural note in the pilot's headphones, this warning note may be silenced by the operation of a cut-out switch in the cabin.

### Engine-driven pump

4. The engine-driven hydraulic pump is mounted on and is driven from the engine accessories gearbox which is mounted at the bottom of the engine bay, just aft of the rear spar frame on the port side of the aircraft. Access to the gearbox and pump may be obtained after removing the access panels. To prevent the pump from overheating, a continuous flow of hydraulic fluid is circulated through the pump casing and back to the reservoir. A non-return valve incorporated in the delivery line prevents reverse flow when the engine, and consequently the pump, is not running.

### Handpump

5. The hydraulic handpump is mounted in the engine bay and will operate any of the various services after the appropriate selection has been made. The pump, which draws fluid from the reservoir through the same filter as the engine-driven pump, delivers fluid under pressure through a non-return valve. A relief valve, set to blow-off at a pressure of 2800-2900 lb/in<sup>2</sup> is installed between the inlet and outlet connections of the pump. The pump handle is stowed in clips on the inside of the engine access door.

### Reservoir

6. The hydraulic reservoir is mounted in the engine bay on the starboard side of the aircraft. The filler cap, accessible through an access door in the rear portion of the top wing fillet on the starboard side of the aircraft, incorporates a sight glass which enables visual inspection of the contents of the reservoir to be made. To facilitate this inspection of fluid level, the inner circumference of the neck below the sight glass is painted white. The filler cap secures a gauze filter element in the neck. Fluid is drawn from the reservoir through an internal stack pipe which is in connection with the outlet connection on the reservoir. From the outlet connection the fluid is conveyed via a pipe to the filter and thence through another pipe which branches to the engine driven pump and the handpump. To relieve excessive internal pressure the reservoir is vented to atmosphere through a pressure relief valve incorporated in a banjo fitting on the reservoir and a drain connection through the aircraft skin. The procedure for replenishing the fluid in the reservoir is described in Sect. 2, Chap. 2.

### Filters

7. The hydraulic system main filter is mounted on frame 30, and micronic filters serving the aileron and elevator power control systems are located in the starboard wing and dorsal fin respectively.

### External supply couplings

8. Three external supply couplings are provided for connection with the hydraulic servicing trolley and testing the hydraulic system on the ground. These couplings are located in the engine bay and are accessible after removing the access panel in the bottom of the fuselage.

### Emergency air supply bottles

9. The two high-pressure air bottles for the emergency operation of the alighting gear and landing flaps are mounted side by side below the two Anti-G air bottles just aft of the pilot's seat. All four air bottles are charged in-situ, to the same pressure, simultaneously through a common in-situ charging valve. The procedure for recharging the air bottles is described in Sect. 2, Chap. 2. Two gauges for indicating the pressure in the hydraulic emergency air bottles are mounted in the cabin.

### Hydraulic accumulators

10. Hydraulic accumulators are provided for the emergency operation of the wheel brakes and power-operated ailerons and elevators. The two accumulators for brake operation are located in the nose wheel bay, and the one for the powered aileron circuit in the starboard wheel bay, together with its associated pressure gauge. The accumulator for operation of the elevator power controls, which also incorporates a pressure gauge in the circuit, is installed in the dorsal fin just forward of the tail plane, access being obtained through a door in the port side of the fin. This door is provided with a window to facilitate the reading of the pressure indicated on the gauge. The brake accumulator pressure gauge is mounted in the cabin.

RESTRICTED

**Alighting gear**

11. Actuation of the hydraulically-operated alighting gear is initiated electrically from a switch in the cabin which energizes a solenoid-operated control valve mounted on the front spar in the starboard wheel bay. Four pipes are connected to this valve, two of these being from the supply and return lines, while the other two direct fluid to and from the undercarriage jacks and fairing door jacks. Fluid flowing to the anchored end of the jacks passes freely through two shuttle valves, these valves having no positive function unless it is necessary to lower the undercarriage by means of the emergency air supply. Mechanically-operated sequence valves are incorporated in the circuit to ensure that the fairing doors and wheel units operate in their correct functional order in relation to each other. Control of the lowering speed is effected by means of restrictors in the pipe lines. A pressure regulator valve is also incorporated in the pressure line between the main supply and control valve to maintain pressure in the power control circuit. A pressure regulator valve in the line to each main door jack ensures that sufficient pressure is maintained in the wheel unit jacks to keep the wheel units fully up while the doors are being closed. A jettison valve, which is operated by high-pressure air when emergency lowering of the alighting gear is effected, permits the fluid expelled from the 'up' side of the jacks to be blown into the atmosphere. Each main undercarriage leg is provided with a mechanical recuperator which is attached to the leg in the region of the lower torque link. The recuperators, which obtain their pressure from the main pressure line of the hydraulic system, maintain a charging pressure of 1500 lb/in<sup>2</sup> in the main undercarriage shock absorbers at all times when the hydraulic pump is running. If, as a result of the aircraft being subjected to excessive temperatures during parking, the pressure in the shock absorber rises sufficiently to cause the leg to extend, the valve is tripped mechanically to off-load the pressure and restore the leg extension

to normal. To ensure that the high pressures generated during landing are contained within the shock absorber unit, the valve closes as soon as the landing load is applied to the main undercarriage wheels. The surplus oil off-loaded from the shock absorber on leg extension, is by-passed through the pressure reducing valve to the return line.

12. When undercarriage DOWN is selected, fluid is directed through the two shuttle valves to the anchored end of the main wheel fairing door jacks, the nose wheel jack and the nose wheel fairing door jack. These jacks then commence to extend, the initial movement of the main wheel fairing door jacks opening the two main fairing door locks (*port and starboard*). Subsequent lowering of the doors operates the leg fairing locks. When these jacks are fully extended, the undercarriage DOWN sequence valves open, permitting fluid to flow to the anchored end of the main undercarriage jacks and at the same time operates a sequence valve which opens the main undercarriage line to permit the main wheel jacks to extend and lower the wheels. The flow of fluid from the wheel unit jacks is impeded by one-way restrictors in the pipe lines, thus preventing the units from extending too rapidly. An internal mechanical lock in each of the main wheel jacks secures the legs in the extended position. In the case of the nose wheel unit, the two doors open together and the wheel forces the fairing door clear as the leg extends. The nose wheel leg is locked down by means of a spring-loaded plunger at the top of the leg.

13. When undercarriage UP is selected, the hydraulic fluid is directed to the piston side of all jacks, except the door jacks to which flow is prevented by their closed sequence valves. Fluid flows comparatively freely into the wheel unit retracting jacks which commence to retract and raise the units. Final movement of the legs, in their upward travel, operate the sequence valves permitting fluid to flow to the door jacks which then retract to close the fairing doors,

when spigots on the doors engage with the mechanical locks. During this operation, fluid expelled from the nose wheel door jack is impeded by a restrictor in the pipe line, thus preventing the door, which is assisted by air loads, from closing too rapidly.

**Undercarriage control**

14. The alighting gear is controlled from the cabin by a selector switch which consists of two inter-locked push-switches, designed in such a manner that the operation of one push-switch automatically ejects the other. The upper push-switch is used to retract the alighting gear and incorporates a solenoid safety lock, which engages when de-energized to prevent the alighting gear from being raised when the wheels are on the ground. This solenoid is controlled by a microswitch on each undercarriage leg, which breaks the circuit to the solenoid when the leg is compressed by the weight of the aircraft when the wheels are on the ground. Release of the load on take-off, or when the aircraft is jacked up with the wheels off the ground as for testing purposes, causes the microswitches to make contact, thus energizing the solenoid to release the lock and permit normal operation of the push-button. It is possible, however, to retract the alighting gear and belly land the aircraft in an emergency by turning the knurled ring, located around the UP button, in a clockwise direction and then depressing the button. *This override of the solenoid lock should not normally be used to retract the alighting gear in flight (Sect. 1, Chap. 3).*

**Note . . .**

*To re-set the solenoid lock override after emergency use, insert the Dowty re-setting tool (Ref. 27Q/12407, Part No. S.T.1657) into the small hole in the face of the UP button, press lightly and turn the knurled ring back to its original position.*

The lower push-button switch of the selector unit is used to lower the alighting gear. Detailed information on the electrical circuit is given in Sect. 5, Chap. 1.





**Emergency lowering**

15. In the event of hydraulic or electrical failure, the undercarriage legs may be lowered by the admission of high-pressure air into the hydraulic jacks which operate them. The air is obtained from a high-pressure air bottle, installed with the flap and anti-G air bottles in the front fuselage, just aft of the pilot's seat in the cabin. There are two shuttle valves, one for the main wheel units and the other for the nose wheel unit. When the emergency control is operated, high-pressure air is directed to the shuttle valves which operate to cut off the hydraulic supply circuit and at the same time permit air to flow to the anchored end of the nose wheel jack, the nose wheel fairing door jack and the main wheel fairing door jacks. These jacks then commence to extend, the initial movement of the main wheel fairing door jacks opening the main wheel fairing door locks (*port and starboard*). Subsequent lowering of the doors operates the leg fairing locks, and these in turn, operate selection valves which pass air to the anchored ends of the main wheel jacks, thus causing them to extend and lower the legs. The air line is also in connection with a jettison valve which opens under the pressure of the emergency air and permits the fluid expelled from the jacks to be blown to atmosphere. The operation of the emergency control is described in Sect. 1, Chap. 3.

**Note . . .**

*When once the emergency air system has been used, the release valve must be re-set, the system bled of air and the high-pressure air bottle re-charged before next take-off.*

**Flaps**

16. The hydraulically-operated landing flaps are controlled by a selector switch in the cabin. The switch provides for UP, DOWN and six intermediate positions. Between this switch and the electro-hydraulic control valve is a drum switch which directs the current to the UP or DOWN solenoids of the valve according to the attitude of the flaps at the time of selection and breaks the circuit when the selected attitude of the flaps is attained.

17. The flap actuating jacks are mounted in the wings between the undercarriage girder and rear spar. Flap interconnection is by means of double-acting jacks through an independent connective system, fluid flowing to and from each jack simultaneously, the fluid displaced from the one being transferred to the other. These synchronizing jacks, which are fed through a reducing valve which drops the pressure to 500lb./in<sup>2</sup>, for the synchronizing circuit only, are also mounted between the undercarriage girder and rear spar in the wing. The synchronizing jacks are balanced out by selector valves which are operated every time the flaps are closed. A throttling valve is fitted in the main system to control the rate of movement of the flap and to assist synchronization should the connecting system fail. Fluid to the anchored ends of the main jacks passes through a shuttle valve which has no positive function until the emergency air system is used to lower the flaps in the event of hydraulic failure. A pressure relief valve is incorporated in the circuit between the control valve and flap jack. This valve, which is set to  $3050 \pm 50$  lb/in<sup>2</sup> prevents the flaps from being damaged, by excessive air loads, should they be extended at high air speed. A pressure regulating valve, is provided to prevent loss of pressure in the power controls circuit when operating the flaps. Three test connections are provided for use when checking the synchronizing of the flaps (*shown in fig. 3*).

**Emergency operation of flaps**

18. Emergency operation of the flaps in the event of hydraulic failure is effected by the admission of high-pressure air into the jacks which operate them, the air being obtained from a high-pressure air bottle mounted adjacent to the air bottle for emergency operation of the alighting gear (*para. 15*). When the emergency control is operated, high-pressure air is directed to a shuttle valve which operates to cut off the hydraulic supply circuit and at the same time admits air to the jacks. The air pressure also operates a jettison valve which permits fluid expelled from the jacks to be blown to atmosphere.

**Note . . .**

*When the emergency air system has been used, the release valve must be re-set, the system bled of air and the high-pressure air bottle re-charged before the next take-off.*

**Aileron booster system**

19. Hydraulically-operated booster jacks provide the power to move the ailerons. The jacks, which are provided with a servo valve and a locked release unit, are fitted, together with their linkage system, in a bay formed by ribs R and S, a diaphragm and the rear spar of their respective wings. Each booster jack has an internal by-pass which connects with either side of the jack piston. The by-pass incorporates a simple spring loaded valve that opens when the supply pressure falls below 200 lb/in<sup>2</sup> and closes when the pressure reaches 400 lb/in<sup>2</sup>. Selection of power ON or OFF is made by the operation of a switch in the cabin and an indicator, adjacent to the switch, operated by a pressure switch in the hydraulic circuit, shows that, after selecting power ON, power is, in fact, available. The indicator shows black when the pressure at the booster is greater than 600 lb/in<sup>2</sup> and white when the pressure is less. Each assembly is carried on two sets of bearing blocks attached to the outboard face of rib R. The linkage consists of an input lever and output lever on one axis pin and a release unit on another, the

booster unit being suspended between the levers and release unit. The aileron control tube from the control column is connected to the input lever and the control tube from the aileron is connected to the output lever. A two-position hydraulic jack assembled to the aileron torque tube below the cabin floor serves as a lever to transmit the motion of the torque tube to the control tubes which pass upwards behind the seat and then aft to the ailerons. The jack is fed with pressure oil from the same pressure line that serves the boosters, and consequently the jack is extended when the ailerons are in power. When the aileron control switch is placed to manual, or if hydraulic failure occurs, the jack, being spring-loaded, retracts and the oil trapped in the jack on retraction is by-passed via a shuttle valve to the return line to ensure a rapid change-over. Thus manual operation of the ailerons is effected through a shortened lever which reduces the range of aileron movement by approximately 6 deg. and less effort is required from the pilot to operate them. A spring feel unit is incorporated in the control system. The linkage system and its operation is described in Sect. 3, Chap. 4.

**20.** The hydraulic supply circuit is connected to the control valve through a micronic filter and a non-return valve. In the event of hydraulic failure an accumulator fitted in the starboard wheel bay will provide a reserve of power before the system reverts to manual conditions. From the control valve fluid is passed to the servo valve fitted at each aileron booster. The servo valve spindle is attached to the input lever of the input/output lever assembly

and is therefore directly connected to the control column, movement of which will operate the servo valve to admit fluid to one side of the hydro-booster and open the opposite side to return. The hydro-booster ram is fixed to the aircraft structure by the locked release unit and the jack body will move in response to fluid pressure on either side of the piston. The jack body is connected to the output lever and consequently moves the aileron in response to control column movement. The jack body continues to move until the servo motor is centralized and cuts off the fluid supply, holding the ailerons in the selected position until a further movement of the control column is made. In the event of hydraulic failure or when 'Manual' is selected, a spring loaded by-pass valve opens when the pressure falls to 200 lb/in<sup>2</sup> and fluid is freely passed from one side of the jack piston to the other as the jack body is moved by the control column. The operation and circuit of the cut-out switches and indicators is described in Sect. 5, Chap. 1 and detailed information on the hydro-boosters will be found in A.P.4601A, Vol. 1.

#### Elevator booster system

**21.** The elevator hydraulic booster jack and its linkage system is located between frames 52 and 55, just below the tail plane. The assembly is carried in a channel-sectioned beam bolted to brackets mounted to the frames and consists of a booster jack, locked release unit, servo valve and operating link, together with an input and output lever. The elevator control tube from the control

column is connected to the input lever and the elevator to the output lever. A spring feel unit is incorporated in the control system. In general, the operation of the hydraulic circuit is the same as that for the ailerons (*described in paras 19 and 20*). The linkage system and its operation is described in Sect. 3, Chap. 4. When the emergency system is used, the hydraulic accumulator provides for a limited number of reversals of the control column.

#### Wheel brakes

**22.** The hydraulically-operated wheel brakes are controlled from a lever-operated control, fitted on the control column handgrip. Differential control is obtained by means of a relay valve which is in connection with the rudder bar. In addition, Maxaret units are fitted, one to each main under-carriage leg, which permit the maximum braking efforts to be applied without the risk of the wheel locking. These anti-lock units consist of a valve regulated by a rubber-tyred flywheel in contact with the rim of its respective landing wheel. The units are incorporated in the hydraulic pressure line from the cabin controls to the associated brake units. The Maxaret units are sensitive to angular deceleration consistent with an approaching wheel lock. Under such conditions they off-load the hydraulic pressure applied to the brakes until conditions again return to normal. From the supply circuit, the hydraulic fluid passes through a non-return valve to the brake relay control valve. Two hydraulic accumulators, for emergency operation of the brakes in the event of hydraulic failure, are piped into the line from the non-return valve to the control valve.

A branch pipe from this line is taken to a thermal relief valve which is in connection with the return line. From the brake relay control valve, pipes convey fluid to the Maxaret units and on to the brakes. Branch pipes from the brake supply lines connect with two pressure relays, which in turn, connect with two unions on the triple pressure gauge in the cabin. The third union on the gauge is in connection with the main hydraulic system pressure line via a pressure relay. Thus, the gauge registers the pressure existing in each brake unit and also the main system pressure. The accumulators, together with the air charging connection are mounted in the nose wheel bay. The air pressure in the accumulators is shown on the brake accumulator pressure gauge in the cabin. The procedure for charging the accumulators is described in Sect. 2, Chap. 2, and the pressure to which they are to be charged is given in the Leading Particulars.

#### Air brake

**23.** The air brake is operated by a hydraulic jack which is anchored at frame 50 and controlled by a thumb switch on the throttle twist grip. Full extension or retraction of the air brake is by selection, using the throttle-

mounted switch, and no intermediate position is normally obtainable. The hydraulic circuit consists of a pressure regulator valve, two non-return valves, two single solenoid control valves, a thermal relief valve in the 'in' line, a pressure relief valve in the 'out' line and a pressure-operated switch. The pressure regulator valve is fitted between the pressure supply and the main non-return valve feeding the control valves to maintain sufficient pressure for the supply of the power controls during the period of extension and retraction of the air brake. A magnetic indicator in the cabin gives a white indication when the air brake is extended and black when retracted. On undercarriage DOWN selection (owing to limited ground clearance) the air brake control switch is rendered automatically inoperative and the circuit disconnected so that the air brake automatically retracts to the 'in' position, if it is not already in that position. This condition is also obtained on operation of undercarriage emergency lowering by means of a micro-switch operated by the undercarriage emergency air valve. On undercarriage UP selection, the air brake control switch in the throttle lever again becomes operative to permit control of the air brake through the electro-hydraulic control valves in the rear fuselage. The installation may, however, be tested on the ground while the alighting gear is down, by the operation of a spring return test switch in the cabin. Operation of this switch will permit partial extension and immediate retraction of the air brake each time the switch is moved to the ON position. This gives indication in the cabin by means of the magnetic indicator that the system is functioning satisfactorily.

#### Note . . .

*Air brake IN must not normally be obtained by selecting undercarriage DOWN. On no account is full extension of the air brake on the ground to be obtained by fitting locks to the undercarriage jack and selecting undercarriage UP.*

#### Operation

**24.** After the undercarriage has been raised, operation of the air brake switch to the OUT position energizes the solenoid of the main control valve and the circuit is maintained after the switch is released by a hold-on relay (Sect. 5, Chap. 1). The jack then extends the air brake by differential action at high speed until the rise in hydraulic pressure due to the load on the air brake causes the pressure switch to operate. Closing of the contacts of this switch energizes the solenoid of the high speed control valve, the circuit being maintained, when once operated, by the pressure switch 'hold-on' relay (Sect. 5, Chap. 1). The jack then continues to extend to put the air brake 'out', but now at full power (normal speed), until the 'fully-out' position is reached. In the 'out' position, if the air load on the brake produces a hydraulic pressure above the setting of the relief valve, this valve will lift and permit the air brake to retract, oil for the 'in' side of the jack being drawn through a non-return valve from the return line. Retraction of the air brake will cease when pressure drops to the re-seating pressure of the relief valve, and will extend again when the air load is reduced. On the operation of the air brake switch to the IN position, the 'in' relay is energized to break the circuit (Sect. 5, Chap. 1) and the jack will retract to bring the air brake to the IN (closed) position.



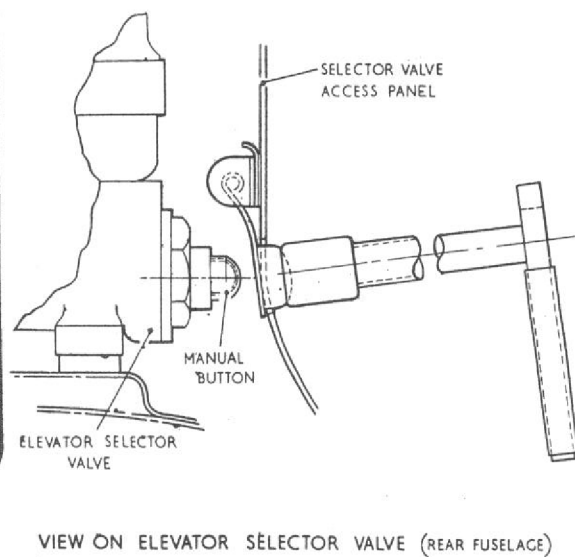
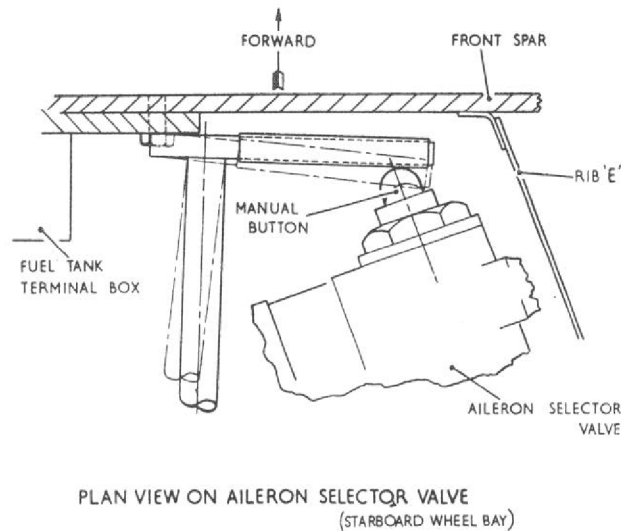
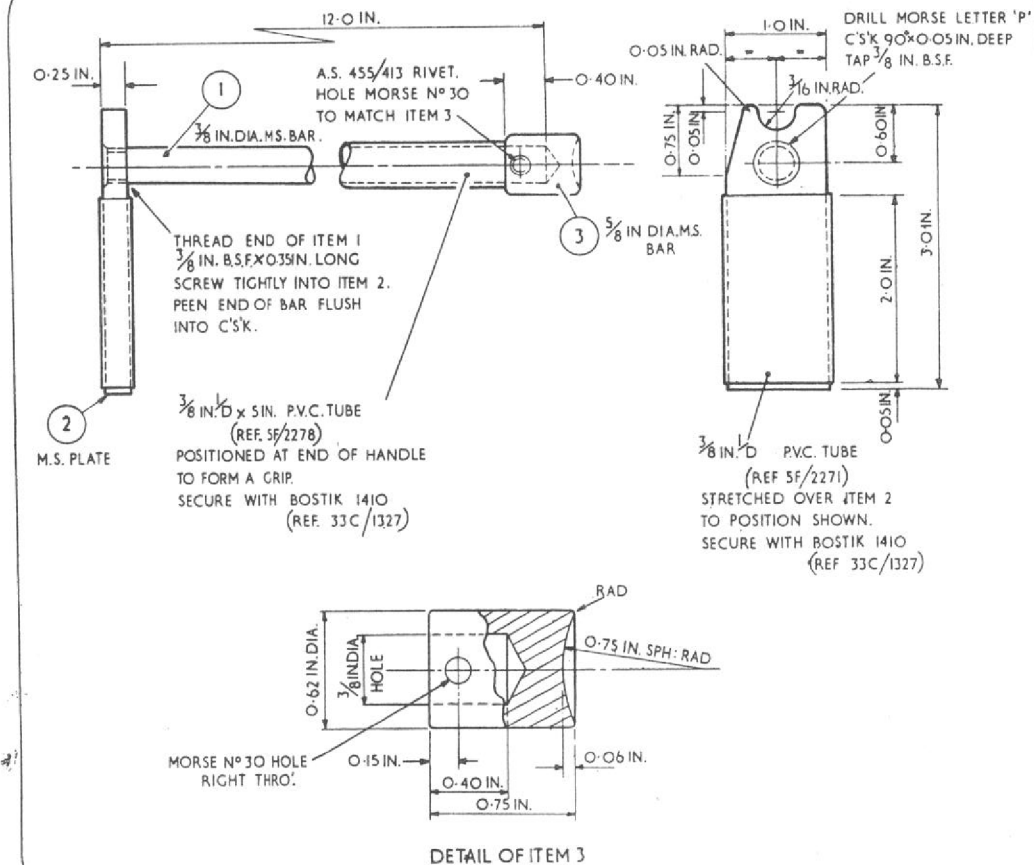


Fig. 4 Tool operating aileron and elevator selector valves

RESTRICTED

## SERVICING

### General

25. Scrupulous cleanliness is essential during all servicing of the hydraulic system. Fluid used for topping up the system must be added using the Risbridger Replenishment Gun or the Pressurised Fluid Replenishment Can. Fluid drained from the system during bleeding must not be put back into the system. When pipe lines are disconnected, the unions and pipe-ends must be immediately blanked off with blanking caps to exclude the ingress of dirt or moisture. *Masking tape, rag, or material of a fluffy nature must not be used for this purpose.* All disconnected pipes must be flushed out with clean hydraulic fluid prior to re-assembly. When drain plugs or other components are removed, they must be examined carefully to ensure that they are clean before being re-assembled in the system. When using a hydraulic servicing trolley for testing the system, ensure that a micronic filter is in circuit, and that the filter is clean. If the filter is dirty, it should be discarded and a new filter fitted. *This is very important.* Care must be taken to ensure that one-way components are correctly fitted. If unsure of the direction of flow, consult the hydraulic circuit diagram or seek assistance.

### Note . . .

*Hydraulic fluid is detrimental to paint, rubber, electrical cables, etc., therefore, great care must be taken to ensure that no fluid is spilled on such parts.*

### Power control selector valves—override device

26. The aileron and elevator selector valves are fitted with an override device which enables "POWER OFF" to be selected manually when the aircraft is on the ground. This ensures that it is always possible for servicing operations to be carried out by use of the hand pump, the delivery from which is

insufficient without the override, to close the hydro booster by-pass valves. The procedure is as follows:—

- (1) To select 'Manual' with electrics available, select 'POWER OFF', then depress the button located at the solenoid B end of the selector valve. The hand pump will now be capable of building up hydraulic pressure.
- (2) To select 'Manual' without electrics being available, remove the dust cap from solenoid A on the selector valve, depress the solenoid adjuster and then the manual selector button. The hand-pump will now be capable of building up the required hydraulic pressure.

A tool as shown in fig. 4 should be used to operate the buttons on the selector valves.

### Note . . .

*Only 20 lb. pressure, approximately, is required to operate the Manual selector button and this can only be accomplished if there is no system or accumulator pressure. If the button feels solid or springy, undue pressure should not be applied as this indicates that hydraulic pressure is still available.*

For ease of operation of the override device on the elevator selector valve an external push button flap is fitted on the port side of the fuselage, forward of frame 55. The aileron valve is accessible through the starboard wheel bay.

### Hydraulic reservoir

27. The procedure for refilling the hydraulic reservoir is described in Sect. 2, Chap. 2. The type of oil to be used is given in the Leading Particulars.

### Emergency air cylinders and hydraulic accumulators

28. The procedure for re-charging the emergency air cylinders and hydraulic accumulators, which form part of the hydraulic system installation is described in Sect. 2, Chap. 2.

### Lubrication

29. For the lubrication of the rubber sealing rings, gland rings, etc., grease XG-315 is to be used. For all bearings, hinge pins, etc., unless otherwise stated in the appropriate chapter, use XG-287.

### Faults

30. Faults in the system may be caused by defects in either the hydraulic or electrical systems. Complete stoppage of the system is unlikely but, if occurring, could be due to:— failure of the pump, obstruction in the pipe line between the pump and control valve, fracture of a pipe line and consequent loss of fluid or a blocked filter. In all cases of unsatisfactory operation, the reservoir should be checked for correct level. Generally, faults can be traced by observing the functioning of the system as a whole and localizing the cause, this procedure should always be adopted before dismantling components for inspection. Investigation of faults should be considered in accordance with the instructions given in the following paragraphs.

### Loss of pressure

#### External leakage

31. Keeping the installation clean will facilitate the location of external leakage. Such leakage occurring in a component should be dealt with in accordance with the instructions given in the handbook for the component concerned. In some cases, leakage may occur at a pipe coupling where a metal-to-metal joint is made and may possibly be remedied by tightening the unions, but care must be taken to avoid over-tightening. If normal tightening is ineffective, examine the bellows of the pipe, if found faulty, the pipe must be renewed. Where adapters and plugs are concerned, these must not be tightened unless permitted in accordance with the instructions given in the handbook for the component concerned.

### Note . . .

*Tightening will not cure a leak which is due to a defective sealing ring. The only remedy in such cases is the renewal of the defective seal or component.*

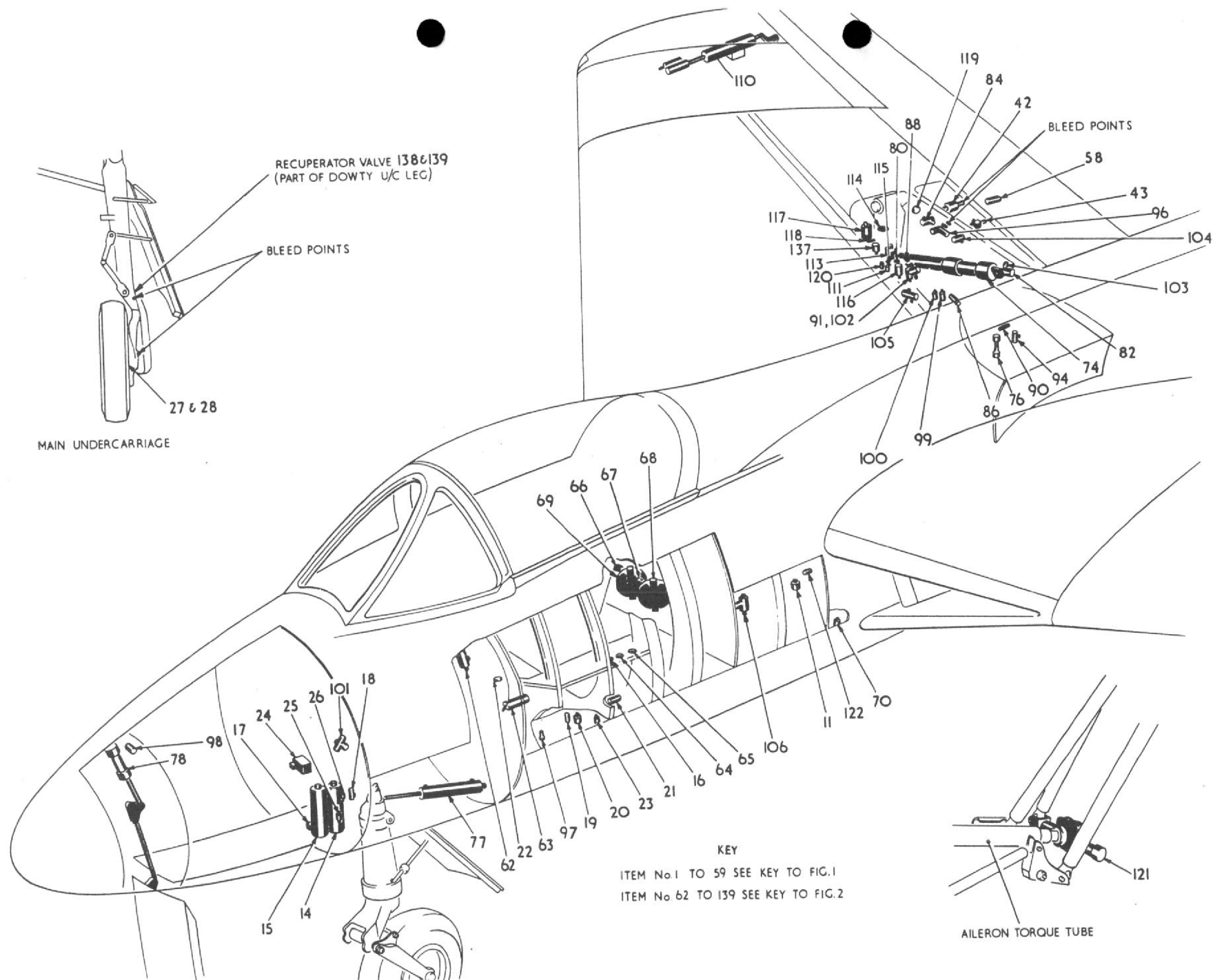


Fig.5 Hydraulic system installation (1)

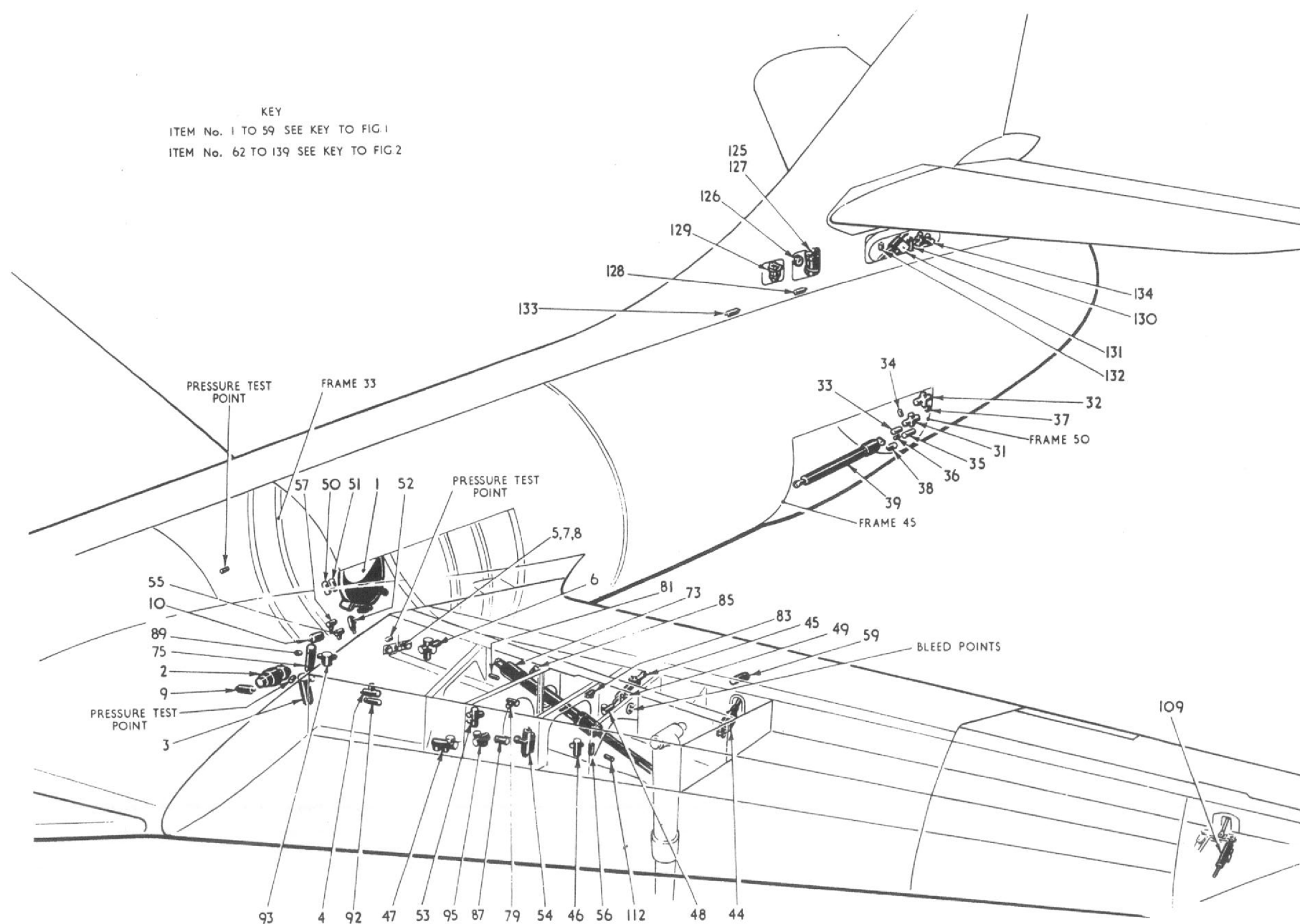


Fig.6 Hydraulic system installation (2)

32. Generally, pipe leakage is a rare occurrence and would, usually, be the result of external abrasion at points where the pipe passes over structural members. It is essential, therefore, to ensure that all pipes are securely clipped to structure with which they are in contact to eliminate the possibility of chafing.

- ◀ 32A. Units are authorised to locally manufacture flexible hoses for the pressure and return lines at the aileron and elevator powered flying control units (PFCUs) and at the transport joint, frame 40. Details are given in the Topic 3A and Topic 6.

Note ...

*The main cause of PFCU hose chafing is fouling of the hose on the hose guards. During installation, therefore, it is essential that two spanners are used to prevent the hose fouling the guard when tightening the end fittings. A check must be carried out for clearance between the hose and hose guard over the full range of movement in manual and powered modes.*

#### Internal leakage

33. Internal leakage will cause sluggish or erratic movement in the particular circuit and, possibly, creeping from the selected position. Creeping may also be due to leakage past a non-return valve in the circuit. The remedy is to remove and test any suspected component in accordance with the instructions given in the manual for the component concerned.

#### Air in the system

34. Air in the system may be detected as follows:—

- (1) Sluggish operation.
- (2) Backlash at flaps or fairing doors, etc.
- (3) Backlash or sponginess when using the handpump.

To expel the air, it will be necessary to bleed the faulty circuit (*para. 35*).

#### Bleeding the system

35. On re-assembly of any circuit it must first be primed with clean hydraulic fluid to the specification given in the Leading Particulars, and the handpump operated until all air is expelled from the circuit through the bleed screws on the components, or by loosening or disconnecting couplings. *The reservoir should be constantly topped up during bleeding operations, otherwise more air will be introduced into the system through the suction line in the reservoir.*

The complete aircraft hydraulic system is to be bled as follows (when a particular circuit or circuits only are to be bled then only those paragraphs relevant to the circuit or circuits need be complied with):—

- (1) Jack up the aircraft with its wheels clear of the ground.
- (2) Inflate all accumulators to the inflation pressures shown on adjacent labels.
- (3) Fill the reservoir.
- (4) Select undercarriage DOWN and operate by means of the handpump.
- (5) Bleed from the undercarriage jacks and then from the fairing door jacks by means of the bleed screws on the components.
- (6) Fit locks on the main and nose undercarriage legs. Select undercarriage UP and bleed the undercarriage jacks. The fairing door jacks should then be bled by depressing the plungers of the sequence valves in the wings and nose wheel bay, restraining the doors from retraction by manual pressure on the doors.
- (7) Tighten all bleed screws.

- (8) Bleed the main flap jacks in both the flaps UP and flaps DOWN position by means of the bleed screws in the wheel bays. The flap interconnection jacks should be bled after they have been adjusted for travel (Sect. 3, Chap. 4). Disconnect the flap operating jacks at the flap levers. To bleed the port down lines, the starboard flap should be raised and vice versa. *It is essential that the flap interconnection circuit is completely free from air, otherwise 'out of balance' will result between port and starboard wing flaps.* Tighten all bleed screws and reconnect operating jacks.

- (9) To bleed the Maxaret units, the landing wheels should be removed and the return lines disconnected. This procedure enables each unit to be bled through its own return line by rotating the Maxaret wheel smartly by hand in the direction of the arrow on the unit's nameplate and then bringing the wheel to rest. Each time the wheel is stopped, a small quantity of fluid will be released from the exhaust connection. This sequence should be repeated until the fluid expelled is clear and free from air. Re-connect the return line. The brake units should then be bled in the normal manner by means of the bleed screws on the components.

- (10) Ensure that no pressure exists in the system. Mount the bleed clamp (*Ref. No. 27VA/5258, Part No. AO.101237*) on the port hydraulic brake pressure relay in the brake triple pressure gauge line (*clamp about the base of the cylinder and adjacent to the integral connection. The clamp should contact the cylinder in the area between the two shallow grooves*). Using an Allen Key, or Unbrako wrench measuring  $\frac{1}{2}$  in. across the flats, tighten the two socket-headed clamp screws. (*Excessive torque is not necessary, conventional use of the recommended wrenches producing the necessary clamping force.*)



Slacken the pipe coupling in the port brake pressure gauge line at the gauge. Generate main system pressure by means of the handpump and operate the brake lever on the control column to the brakes ON position and lock. Move the rudder bar to port and bleed the gauge line until air-free fluid flows from the loosened coupling. Tighten the coupling whilst the flow is maintained. Dissipate the pressure in the system by operating the brakes a number of times, remove the clamp from the port relay and fit it to the starboard relay. Slacken the pipe coupling on the starboard gauge line at the gauge, build up system pressure again and move the rudder bar to starboard, apply the brakes and lock. Bleed the starboard gauge line until air-free fluid flows from the loosened coupling. Tighten the coupling whilst the flow is maintained. Remove the clamp from the relay and check the brakes for correct operation.

- (11) The system pressure gauge circuit is the same as the brake gauge circuit, apart from the addition of a choke between the pressure relay and gauge connection. When bleeding the circuit, it will be necessary to open the choke and clamp the relay. To open the choke, first ensure that there is no pressure in the circuit, then unscrew the two halves of the choke, not more than half a turn, in order to allow fluid to by-pass the choke. Fit the clamp to the relay, loosen the pipe coupling at the gauge and generate system pressure as for brake gauge line, ignoring any leakage at the choke, until air-free fluid flows from the loosened coupling at the gauge. Whilst flow is still maintained tighten the pipe coupling and then the choke. Remove the clamp from the relay.
- (12) Disconnect the pipes from the power booster units and flush the circuit by continual operation of the handpump and replenishment of the reservoir until

fluid flows free from air. Reconnect the pipes, loosen the bleed plugs and operate the circuit until air-free fluid flows from the bleed points. Tighten the bleed plugs. Check the circuit for correct operation.

- (13) Loosen the bleed plugs on the air brake jack and operate the handpump until air-free fluid is expelled from the bleed points. Tighten the bleed plugs and check the circuit for correct operation.
- (14) When a micronic filter is replaced, the system must be bled through the bleed point at the rear of the hydraulic handpump.
- (15) When all bleeding of the system has been satisfactorily completed, the hydraulic reservoir must be finally topped up to the correct level.

#### Bleeding after use of emergency controls

**36.** When the emergency high-pressure air system control has been used, the valve must be re-set and the individual system *must* be bled of air before the next take-off. Care must be taken to ensure that the reservoir filler cap is slackened off and the bleed plugs slackened sufficiently to release all pressure before any selection is made. When all pressure is released, prime and bleed the appropriate system.

#### Testing airbrake on ground

##### Undercarriage down

**37.** Operation of the spring-return test switch, mounted in the cabin, in conjunction with a microswitch operated by the air brake, permits partial extension (*about 15 deg.*) of the air brake and immediate retraction each time the switch is moved to the ON position. This gives indication in the cabin by means of the magnetic indicator that the system is functioning satisfactorily. *Ensure that the area below the air brake is clear of obstruction and that no personnel are in the vicinity before carrying out this operation.*

##### Undercarriage up

(Refer to Warning, para. 40.)

**38.** Operation of the air brake by means of the normal control on the throttle lever will give full travel at high speed. To check the operation of the high speed control valve short out the pressure switch (*by means of a link across terminals AB.6 and 8 at TB.47 on frame 45, port rear fuselage*) and check that low speed operation is obtained. Remove link after test. To check the operation of the pressure switch, connect a suitable lamp (24v. 3 watt) across the above terminals, which lights on selection of air brake OUT. Use handpump to check pressure at which switch operates (*i.e. lamp goes out*).

#### Checking flap pressure regulating valve

**39.** Whenever a flap pressure regulating valve is renewed, or is replaced after removal, it must be checked for correct adjustment and functioning as follows:—

- (1) Jack up the aircraft with the wheels clear of the ground.
- (2) Into the pressure supply line, fit an external pressure gauge, reading up to 4000 lb/in<sup>2</sup> at 100 lb. intervals.
- (3) Run the hydraulic rig at slow speed and check that all services are operative.
- (4) With the services non-operative and supply pressure at 3000 lb/in<sup>2</sup>, flaps UP and power controls engaged, vigorously stir the control column to reduce pressure to below 1000 lb/in<sup>2</sup> then select

flaps full DOWN and note that as long as the supply pressure remains below 1100 lb/in<sup>2</sup> the flaps will not operate. (If pressure cannot be reduced below 1000 lb/in<sup>2</sup>, it may be necessary to select undercarriage UP in order to obtain the required drain on the supply pressure).

- (5) Allow the pressure to build up to a maximum again, with flaps UP. Select full flap DOWN, and immediately reduce the supply pressure by operation of the power controls or undercarriage. When pressure drops to 1000 lb/in<sup>2</sup>, movement of the flaps should be arrested and should only continue when pressure builds up to 1100-1150 lb/in<sup>2</sup> or above.
- (6) Raise flaps, then switch off the hydraulic rig and allow pressure to drop to zero. Select flaps DOWN, and using the hand-pump raise the supply pressure gradually and note the pressure at which the flaps commence to operate.

Blow-off pressure should be 1100-1150 lb./in.<sup>2</sup> and the re-seating pressure 1000 lb/in<sup>2</sup>.

If the valve setting is incorrect, it must be adjusted as described in A.P.105B series.

#### Operational tests

#### WARNING

Before these tests are applied, the aircraft must be jacked up with the wheels clear of the ground.

40. Ensure that the accumulators and emergency air bottles are correctly charged with air and top up the hydraulic reservoir. When the system has been filled, each circuit must be tested. For this purpose, a hydraulic servicing trolley will be required, the pipes from the pump on the trolley being connected to the appropriate external supply couplings (para. 8). When connection is made, test each circuit for correct operation as follows:—

- (1) Select battery master switch ON.
- (2) Run the hydraulic test rig and check that the pressure builds up to 2800-3000 lb/in<sup>2</sup>.
- (3) Switch off the test rig and check that the pressure falls due to the inherent leak in the flaps and main undercarriage leg recuperator pressure reducing valves.
- (4) Check that the hydraulic low pressure warning light and audio warning come on at 600-500 lb/in<sup>2</sup> as the pressure falls.
- (5) Run the test rig and build up pressure to 2800-3000 lb/in<sup>2</sup>
- (6) Ensure that all personnel and ground equipment etc. are clear of the aircraft, select and operate each circuit in turn, checking for the correct functioning of the circuit, the indicator lights and the mechanical indicators.

#### Testing emergency air system

41. At the inspection periods quoted in the Servicing Schedule, and before carrying out the operational tests mentioned in the previous paragraph, the emergency air system must be tested as follows:—

- (1) Jack the aircraft clear of the ground.
- (2) Connect a ground servicing trolley.
- (3) Arrange suitable receptacles under the vent pipes leading from the fluid jettison valves of the undercarriage and flap circuits to receive the fluid expelled from the jacks.
- (4) Operate the undercarriage and flaps to the UP position (after first ensuring that no personnel are in danger from the components being operated).
- (5) Operate the emergency controls for the undercarriage and flaps and see that the fairing doors open and that the main and nose undercarriage and the flaps move smoothly to the full 'down' position. Check that both the nose and main undercarriages are fully locked down.

#### Note . . .

When the emergency system is used, the flap selector valve is out of circuit. The flaps should, therefore, move down to the full 80 deg.

- (6) After the tests have been satisfactorily completed the controls must be reset as follows:—
  - (a) *Flap emergency control.* Push the operating lever of the air release valve fully forward (beyond the spring dead centre position) at the same time positioning the special pin between the microswitch plunger and the guide on the microswitch mounting bracket.
  - (b) *Undercarriage emergency control.* Position the microswitch actuating lever in its lowest position then push the operating lever of the air release valve fully down (beyond the spring dead centre position).
- (7) Prime and bleed the system then carry out the normal operational tests (para 40).

#### Testing the wheel brakes

42. After servicing the hydraulic circuit for the wheel brakes, test the circuit as follows:—

- (1) With the aircraft jacked up with the wheels clear of the ground, the wheel brake accumulators correctly charged and a hydraulic test rig connected to the external supply couplings, run the test rig and check that a pressure of 2800-3000 lb/in<sup>2</sup> is registered on the gauge.
- (2) With the rudder bar neutral, operate the brake lever and check that 1500-1650 lb/in<sup>2</sup> pressure is registered on the triple pressure gauge for each brake and that both wheels cannot be rotated.



- (3) Check the differential action of the brake relay control valve ensuring at the extreme movement of the rudder bar that:-
  - (a) the braked wheel pressure is 1500-1600 lb/in<sup>2</sup>.
  - (b) the unbraked wheel is free to rotate.
- (4) With the brake lever released check that both wheels are free to rotate.
- (5) Switch off the test rig.
- (6) With the rudder bar neutral check the number of brake applications before the pressure drops to 750 lb/in<sup>2</sup>. Approximately 40 applications should be available.

#### Testing undercarriage emergency up selection

43. Test the undercarriage emergency up selection system as follows:-

- (1) With the aircraft jacked up, wheels clear of the ground and a hydraulic test rig connected to the external supply couplings. Check that the undercarriage selector switch is selected to DOWN.
- (2) Remove No. 2 fuse from the cabin rear port shelf fuse box to de-energize the undercarriage selector inter-lock solenoid (simulating weight on the main undercarriage legs).
- (3) Run the hydraulic rig and check that 2800-3000 lb/in<sup>2</sup> pressure is available.
- (4) Rotate the knurled ring on the undercarriage UP button clockwise.
- (5) Select undercarriage UP and check functioning of circuit.

- (6) Select undercarriage DOWN.
- (7) Reset the UP button whilst keeping the DOWN button depressed, by inserting the Dowty re-setting tool into the small hole in the UP button and lightly pressing until the UP button is released.
- (8) Switch off hydraulic test rig.
- (9) Replace No. 2 fuse in the cabin rear port shelf fuse box.

#### Pressure settings and adjustment of components

44. The pressure settings for all pressure relief valves is given in the Leading Particulars. The adjustment of the various components used in the system is described in the appropriate Air Publications. Should a new pressure regulator valve be fitted into the flap circuit, or the circuit be disturbed during servicing, the regulator valve must be checked for correct functioning after fitment as described in para. 39.

#### Draining the system

45. The bulk of the fluid can be drained from the system by uncoupling unions or connections at the lowest points of the individual pipe runs after the aircraft has been jacked up off the ground and the pressure in the system released by carefully removing the reservoir filler cap. Drainage may be facilitated by operation of the jacks using the handpump.

#### Filters

46. When servicing the main system filter through the access panel in the bottom of the fuselage, the unit must be drained before dismantling in order to avoid spillage of

hydraulic fluid on adjacent components. A drain plug, with a nozzle end, is fitted to the base of the filter body for this purpose and a length of hose, reaching outside the fuselage, must be used when draining. On completion of servicing the plug must be retightened and wire locked. On aircraft in which modification 888 or 1146 has been incorporated the Micronic filters in the aileron and elevator power control circuits are provided with tell-tale devices which indicate when the filter elements have reached the end of their useful life. The tell-tale consists of an indicator pin which is designed to protrude out of the head of the filter casing as a result of the differential pressure set up across the filter element when the element is clogged sufficiently to be considered unserviceable. If, during the periodic servicing of these filters, it is found that an indicator pin is protruding, the filter element must be replaced. After such replacement the indicator pin must be pushed back into the normal position and the affected circuit primed and bled.

#### Note . . .

*Under conditions of extreme cold the resultant increase in viscosity of the hydraulic fluid may cause the indicator pin to protrude irrespective of whether the element is clogged or not. In these circumstances an engine run should be made and the controls operated, after which the indicator pin should be pushed back into its normal position. If it should then protrude again the element should be considered unserviceable and replaced.*

On filters Pre Mod.1307 (Fairey Mod. FHB.172 introduction of metal buttons) the tell-tale indicator should be exercised approximately ten times, at intervals as laid down in the servicing schedule, by pushing the sensing piston from the end remote from the red button, with the aid of a tool similar to that shown in fig. 7. Where this exercising fails to leave the tell-tale device in a free position the complete filter assembly should be removed and replaced by a serviceable assembly.

## REMOVAL AND ASSEMBLY

### General

47. In general, the removal of the hydraulic components from the aircraft and their re-installation is obvious. Before attempting any removals, however, the following precautions should be taken:—

- (1) Before attempting to remove any hydraulic accumulator, dissipate the fluid pressure by operating the control of the component concerned and deflate the accumulator by means of the Schrader valve.
- (2) Ensure that the pipe-ends and unions are suitably blanked off following the removal of any component.

### Access to components

48. Access to the main components of the hydraulic system can be obtained as follows:—

Reservoir—Top rear fillet of starboard wing.

Handpump—Handle stowed in clips on engine access door.

Air cylinders—Cabin—aft of ejection seat.

Accumulators:—

Brake—Nose wheel bay.

Aileron—Starboard wheel bay.

Elevator—Spine fairing—rear fuselage.

### Maxaret units

49. When re-fitting a Maxaret unit, the following precautions should be taken:—

#### Note...

*The mountings of the Maxaret are interchangeable end for end, but it must be ensured that the Maxaret is always mounted with the fixed pivot end nearest to the rim of the aircraft landing wheel.*

- (1) Care must be taken to avoid misplacing the inlet filter of the unit which is a free fit within its inlet connection.

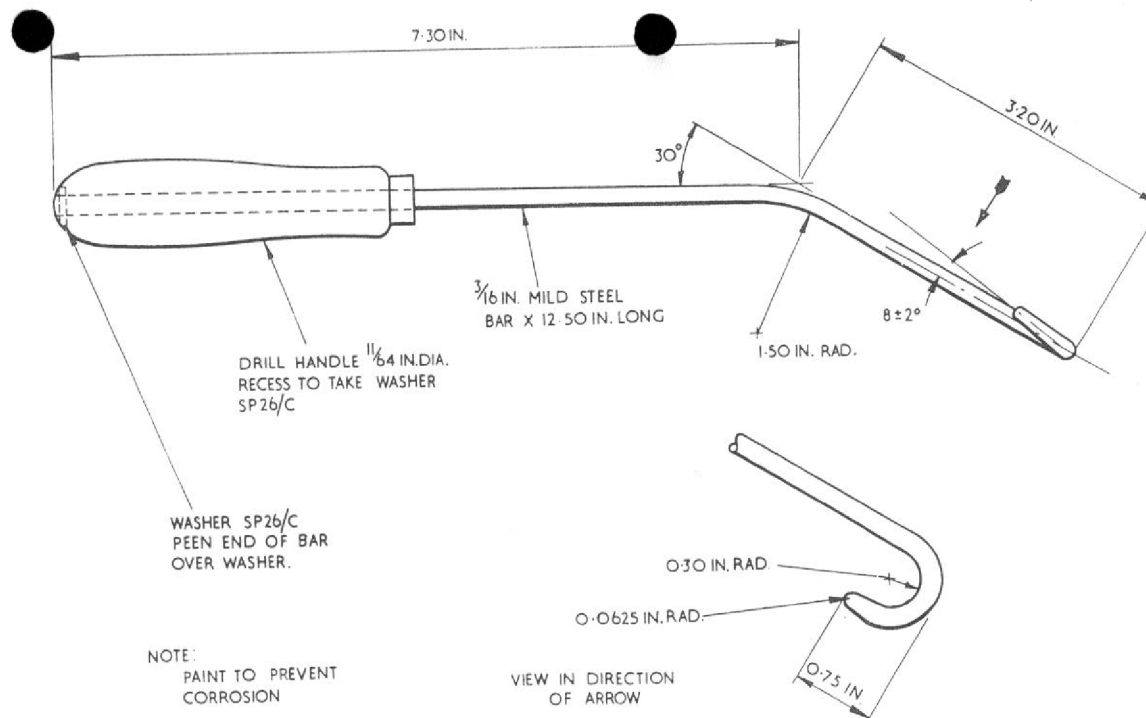


Fig. 7 Tool manipulating micronic filter tell-tale

- (2) The unit must be fitted so that the Maxaret wheel revolves in the direction of the arrow on the nameplate when the aircraft is moving forward.

- (3) Bleed the Maxaret units and wheel brakes in accordance with para.35.

- (4) With the wheel removed and brakes applied. Spin and arrest the Maxaret unit flywheel and check that the brake is applied and released each time the flywheel is rotated and arrested.

- (5) The Maxaret is spring-loaded on to the rim of the landing wheel. When changing a landing wheel, therefore, the Maxaret will move outwards past its normal

position due to the action of the spring, and precautions must be taken to ensure that the Maxaret is held back to its base when replacing the landing wheel. Failure to do so will result in serious damage to the Maxaret.

### Air brake jack

50. When refitting the flexible hoses to the air brake jack, adjust the position of the P.V.C. sleeves so that they just touch the sealing plates when the jack is fully retracted.

### Elevator accumulator charging valve

51. When fitting a replacement elevator accumulator charging valve (complete) or charging valve cap (plug, outer sleeve, chain and split pin) the cap attachment chain should be shortened to a maximum length of 2½ in. between the 'S' links, care being taken to correctly close the 'S' links on completion.

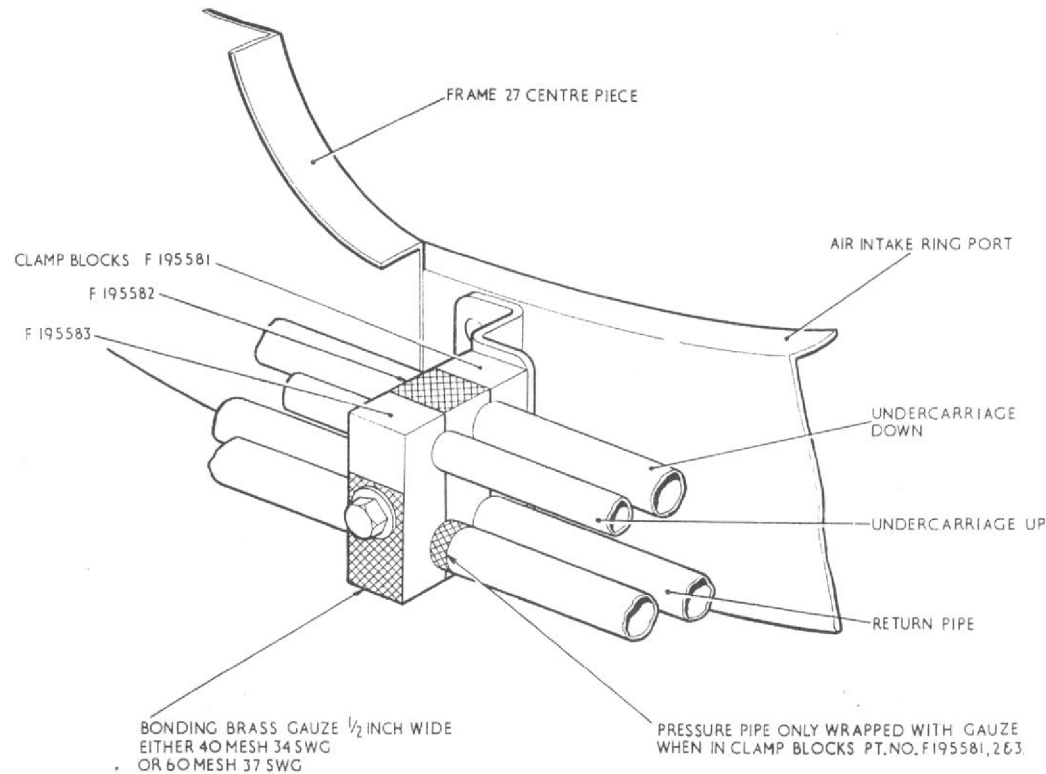


Fig.8 Clamp block for pipes at frame 27

Pipe pressure in engine starter bay - STI/Hunter/383B (fig.8)

52.

Note...

*Pipes manufactured from DTD 323 Tungum may not be fitted in lieu of pipe Pt.No.C205179/6.*

If a serviceable proprietary pipe is not available for fitment a replacement pipe can be locally manufactured from  $\frac{1}{8}$  in. o.d, 22 s.w.g. DTD477 Nickel copper alloy tube (Ref.No. 30B/961132). The pipe is to be manufactured to a pattern available from:

Headquarters Strike Command  
Mech. Eng. T & S2

After manufacture it is to be pressure tested to 4 500 lb/in<sup>2</sup> pressure prior to installation.

53. On installation first ascertain the part number of the clamping block at frame 27. If the clamping blocks are Pt.No. F.195581, F.195582 and F.195583 wrap the pipe with brass gauze, 36 mesh, 33 s.w.g. (Ref.No. 30B/515) where it passes through the clamping block. Where a block Pt.No.F.295593, F.295594, F.295595 is fitted, brass gauze is not to be used as its function is performed by a neoprene insert in the block. Ensure that a minimum clearance of 0.104 in. (12 s.w.g.) is maintained throughout the length of the pipe and that the bonding gauze is fitted as shown in the illustration.

Micronic filters - STI/Hunter/385

54. Only micronic filters which have been subject to STI/Hunter/385 are to be fitted. Such filters are marked on the body in yellow paint "STI/Hunter/385".





This file was downloaded  
from the RTFM Library.

Link: [www.scottbouch.com/rtfm](http://www.scottbouch.com/rtfm)

Please see site for usage terms,  
and more aircraft documents.