

TANKS, FUEL-CARRYING

FAIRING

Issued with A.L. No. 13

REF. No.	PART NUMBER	DESCRIPTION	No. OFF	MATL. SPEC.	CL. OF ST.	PLATE No.
					M.R. L.M.	
		1 2 3 4 5				
46	1807/15A	TANK ASSY, FUEL, SIDE FAIRING, PORT (Pre-mod. 487) (Spares condition)	1	—	MR/A	RB.1
194	1807/15A/1	TANK ASSY, FUEL, SIDE FAIRING, PORT (Mod. 487) (Spares condition)	1	—	MR/A	
83	1807/15A/UN	TANK ASSY, FUEL, SIDE FAIRING, PORT (Pre-mod. 487) (Spares condition)	1	—	MR/A	
195	1807/15A/UN/1	TANK ASSY, FUEL, SIDE FAIRING, PORT (Mod. 487) (Spares condition)	1	—	MR/A	
47	1807/16A	TANK ASSY, FUEL, SIDE FAIRING, STARBOARD (Mod. 487) (Spares condition)	1	—	MR/A	RB.1
196	1807/16A/1	TANK ASSY, FUEL, SIDE FAIRING, STARBOARD (Mod. 487) (Spares condition)	1	—	MR/A	
84	1807/16A/UN	TANK ASSY, FUEL, SIDE FAIRING, STARBOARD (Pre-mod. 487) (Spares condition)	1	—	MR/A	
197	1807/16A/UN/1	TANK ASSY, FUEL, SIDE FAIRING, STARBOARD (Mod. 487) (Spares condition)	1	—	MR/A	
		TANK, FAIRING, TO FUSELAGE ASSY, PORT (1811/415A and 415A/UN)				
		TANK, FAIRING, TO FUSELAGE ASSY, STARBOARD (1811/416A and 416A/UN)				
		Spares for:				
1186	1811/417	BRACKET, mounting, tank, aft, port	1	—	MR	RB.1
6188	1811/417/UN	BRACKET, mounting, tank, aft, port	1	—	MR/C	
1187	1811/418	BRACKET, mounting, tank, aft, starboard	1	—	MR	RB.1
6189	1811/418/UN	BRACKET, mounting, tank, aft, starboard	1	—	MR/C	
		Attachment parts for 1881/417-8 and 417-8/UN:—				
28D/1011019	A.25-8C	Bolt	2	—	C	
28DU/9419569	A.102-8D	Bolt	2	—	C	
28M/9403520	A.27-CP	Nut	2	—	C	
28M/9419538	A.103-DP	Nut	2	—	C	
28W/9419475	SP.15-C	Washer	2	—	C	
28W/9457834	SP.124-D	Washer	3	—	C	
6178	1811/431A	DOOR, assy, port	1	—	MR/B	RB.1
6179	1811/431A/UN	DOOR, assy, port (Pre-mod. 525)	1	—	MR/B	
6180	1811/432A	DOOR, assy, starboard	1	—	MR/B	RB.1
6181	1811/432A/UN	DOOR, assy, starboard (Pre-mod. 525)	1	—	MR/B	
		Spares for:—				
6182	1811/1243ND	SEAL, door	1	—	MR/C	RB.1
6183	1811/2471ND	STRIP, sealing, rubber	1	—	MR/C	RB.1
		Attachment parts for 1811/431-2A and 431-2A/UN:—				
28D/13132	AS.3297-1C	Bolt	5	—	C	
28DU/9480269	A.173-1D	Bolt	5	—	C	
28M/9435067	AGS.2008-C1	NUT, anchor	26	—	C	
6963	FOS.41/4	NUT, anchor	26	—	MR/C	

TANKS, FUEL-CARRYING

FAIRING

Issued with A.L. No. 13

REF. No.	PART NUMBER	DESCRIPTION	No. OFF	MATL. SPEC.	CL. OF ST.	PLATE No.
					M.R. L.M.	
		1 2 3 4 5				
28M/9144673	AGS.2019-C1	NUT, anchor	1	—	C	
28M/9438471	A.158/D	NUT, anchor	1	—	C	
6190	1811/435A	PLATE assy, cover	1	—	MR/C	RB.1
6191	1811/435A/UN	PLATE assy, cover (Pre-mod. 525)	1	—	MR/C	
		Spares for:—				
6193	1811/963ND	SEAL, channel	1	—	MR/C	RB.1
6192	1811/961ND	SEALING	1	—	MR/C	RB.1
		Attachment parts for 1811/435A and 435A/UN:—				
28D/13132	AS.3297-1C	Bolt	2	—	C	
28DU/9480269	A.173-1D	Bolt	2	—	C	
‡2386	1811/433A	PLATE assy, sealing, port	1	—	MR/C	RB.1
‡6184	1811/433A/UN	PLATE assy, sealing, port (Pre-mod. 525)	1	—	MR/C	
‡2386	1811/434A	PLATE assy, sealing, starboard	1	—	MR/C	RB.1
‡6185	1811/434A/UN	PLATE assy, sealing, starboard (Pre-mod. 525)	1	—	MR/C	
		Spares for:—				
	1811/1263ND	SEAL, rubber, 1/32" thick	1	DTD.560	MR/LM	
		Attachment parts for 1811/433-4A and 433-4A/UN:—				
28D/13132	AS.3297-1C	Bolt	8	—	C	
28DU/9480269	A.173-1D	Bolt	8	—	C	
‡6186	1811/4229	PLATE, tie, port	1	—	MR/C	RB.1
‡6187	1811/4320	PLATE, tie, starboard	1	—	MR/C	RB.1
		TANK assy, fuel, fairing, port	—	—	—	—
		(1811/4517A and 4517A/UN)				
		TANK assy, fuel, fairing, starboard	—	—	—	—
		(1811/4518A and 4518A/UN)				
		Spares for:—				
6203	1820/1941A	BAG assy, inhibitor (Pre-mod. 709)	1	—	MR/C	
1497209	1820/1941A/1	BAG assy, inhibitor (Mod. 709)	1	—	MR/C	RB.1
		Spares for:—				
	1820/1941B	BAG assy, inhibitor, unfilled	1	—	MR	RB.1
28D/9436920	A.25-1C	BOLT	3	—	C	—
28DU/9419565	A.102-1D	BOLT	3	—	C	—
6866	FOS.14/2	CLEAT	2	—	MR/C	—
6869	FOS.14/6	CLEAT	1	—	MR/C	—
1854	1811/1215ND	CONDUIT	1	—	C	RB.1
		Attachment parts for 1811/1215ND:—				
28D/12528	A.25-1B	Bolt	2	—	C	—
28DU/9419560	A.102-1B	Bolt	2	—	C	—
28E/14309	AS.3181-12B	Clip, "P"	2	—	C	—
28M/10287	AGS.2001-B1	Nut	2	—	C	—
6954	FOS.40/2	Nut	2	—	MR/C	—
28W/9419474	SP.15-B	Washer	2	—	C	—
28W/17542	SP.124-B	Washer	2	—	C	—
		Attachment parts for 1811/1047:—				
27FR/2374	Flight Refuelling FRS.246/1	CONNECTOR, pipe termination	1	—	—	RB.1
1863	1811/1047	DISH, adaptor	1	—	MR/C	RB.1
		Attachment parts for 1811/1047:—				
28D/9436920	A.25-1C	Bolt	6	—	C	—
28DU/9419565	A.102-1D	Bolt	5	—	C	—
28F/9429636	AGS.1186/3	Washer, sealing	6	—	C	—

TANKS, FUEL-CARRYING

FAIRING

Issued with A. L. No. 12

REF. No.	PART NUMBER	DESCRIPTION	No. OFF	MATL. SPEC.	CL. OF ST.	PLATE No.
					M.R. L.M.	
		1	2	3	4	5
1858	1811/945A	DOOR and reinforcing assy	1	—	MR/C	RB.1
6194	1811/945A/UN	DOOR and reinforcing assy (Pre-mod. 525)	1	—	MR/C	—
		Attachment parts for 1811/945A and 945A/UN:—				
28D/12786	AS.2920-1C	Bolt	21	—	C	—
28DU/9482038	A.174-1D	Bolt	21	—	C	—
1855	1811/713A	DOOR assy, access, port	1	—	MR/C	RB.1
1856	1811/714A	DOOR assy, access, starboard	1	—	MR/C	RB.1
		Attachment parts for 1811/713-4A:—				
28D/12513	A.25-2C	Bolt	14	—	C	—
28DU/9419967	A.102-2D	Bolt	14	—	C	—
28F/9429636	AGS.1186-3	Washer, sealing	14	—	C	—
1860	1811/1065A	DOOR assy, access, port	1	—	MR/C	RB.1
1861	1811/1066A	DOOR assy, access, starboard	1	—	MR/C	RB.1
		Attachment parts for 1811/1065-6A:—				
28D/12513	A.25-2C	Bolt	15	—	C	—
28DU/9419967	A.102-2D	Bolt	15	—	C	—
28F/9429636	AGS.1186-3	Washer, sealing	15	—	C	—
6202	1811/4561A	HOUSING assy, inhibitor	1	—	MR/B	RB.1
28F/10490	AGS.1148-F	NUT	1	—	C	—
28M/10288	AGS.2001-C1	NUT	3	—	C	—
6956	FOS.40/4	NUT	3	—	MR/C	—
28M/11957	AGS.2007-C1	NUT, anchor	50	—	C	—
6963	FOS.41/4	NUT, anchor	50	—	MR/C	—
—	1811/2951A	REINFORCING assy	1	—	MR	RB.1
		Spares for:—				
28M/11957	AGS.2007-C1	NUT, anchor	6	—	C	—
6963	FOS.41/4	NUT, anchor	6	—	MR/C	—
6201	1811/4443	SEAL	1	—	MR/C	RB.1
28F/9428456	AGS.1186-F	SEAL	1	—	C	—
6198	1811/4437	SEAL, door	1	—	MR/C	RB.1
6199	1811/4439	SEAL, door	1	—	MR/C	RB.1
6200	1811/4441	SEAL, door	1	—	MR/C	RB.1
6195	1811/1223ND	SEAL, rubber	1	—	MR/C	RB.1
6196	1811/1225ND	SEAL, rubber	1	—	MR/C	RB.1
6197	1811/1321ND	SEAL, rubber	1	—	MR/C	RB.1
—	1811/1581ND	STRIP, tank bearer, 8" x 0.7" x 3/32"	2	DTD.560	LM	—
—	1811/1583ND	STRIP, tank bearer, 9" x 0.7" x 3/32"	2	DTD.560	LM	—
—	1811/1585ND	STRIP, tank bearer, 4" x 0.7" x 3/32"	2	DTD.560	LM	—
—	1811/1587ND	STRIP, tank bearer, 1.5" x 0.7" x 3/32"	1	DTD.560	LM	—
—	1811/1589ND	STRIP, tank bearer, 2.5" x 0.7" x 3/32"	3	DTD.560	LM	—
—	1811/1591ND	STRIP, tank bearer, 1" x 0.7" x 3/32"	1	DTD.560	LM	—
—	1811/1593ND	STRIP, tank bearer, 5" x 0.7" x 3/32"	1	DTD.560	LM	—
6850	FOS.6-1/8	TAG, wire locking	3	—	MR/C	—
—	1811/3247ND	WASHER	1	—	MR	RB.1
28F/9429636	AGS.1186-3	WASHER, sealing	3	—	C	—
		Attachment parts for 1807/15-16A and 15-16A/UN:—				
1182	1811/421	Bolt, tank mounting	2	—	MR/C	RB.1
1183	1811/425	Boss, serrated	2	—	MR/C	RB.1

TANKS, FUEL-CARRYING

FAIRING

Issued with A. L. No. 12

REF. No.	PART NUMBER	DESCRIPTION	No. OFF	MATL. SPEC.	CL. OF ST.	PLATE No.
					M.R. L.M.	
		1 2 3 4 5				
1204	1811/423	Nut	2	-	MR/C	RB.1
‡1211	1811/427	Plate, serrated	1	-	MR/C	RB.1
1213	1811/419	Steeve, bolt, tank mounting	2	-	MR/C	RB.1
28W/9419493	SP.16-Q	Washer	2	-	C	-
28W/18035	SP.125-Q	Washer	2	-	C	-

RESTRICTED

A/C SERIAL NOS.

TANKS, FUEL-CARRYING

ADDENDUM PAGE RB. 1

XM 704-70 9 ONLY

FAIRING

Issued with A.L.No.6

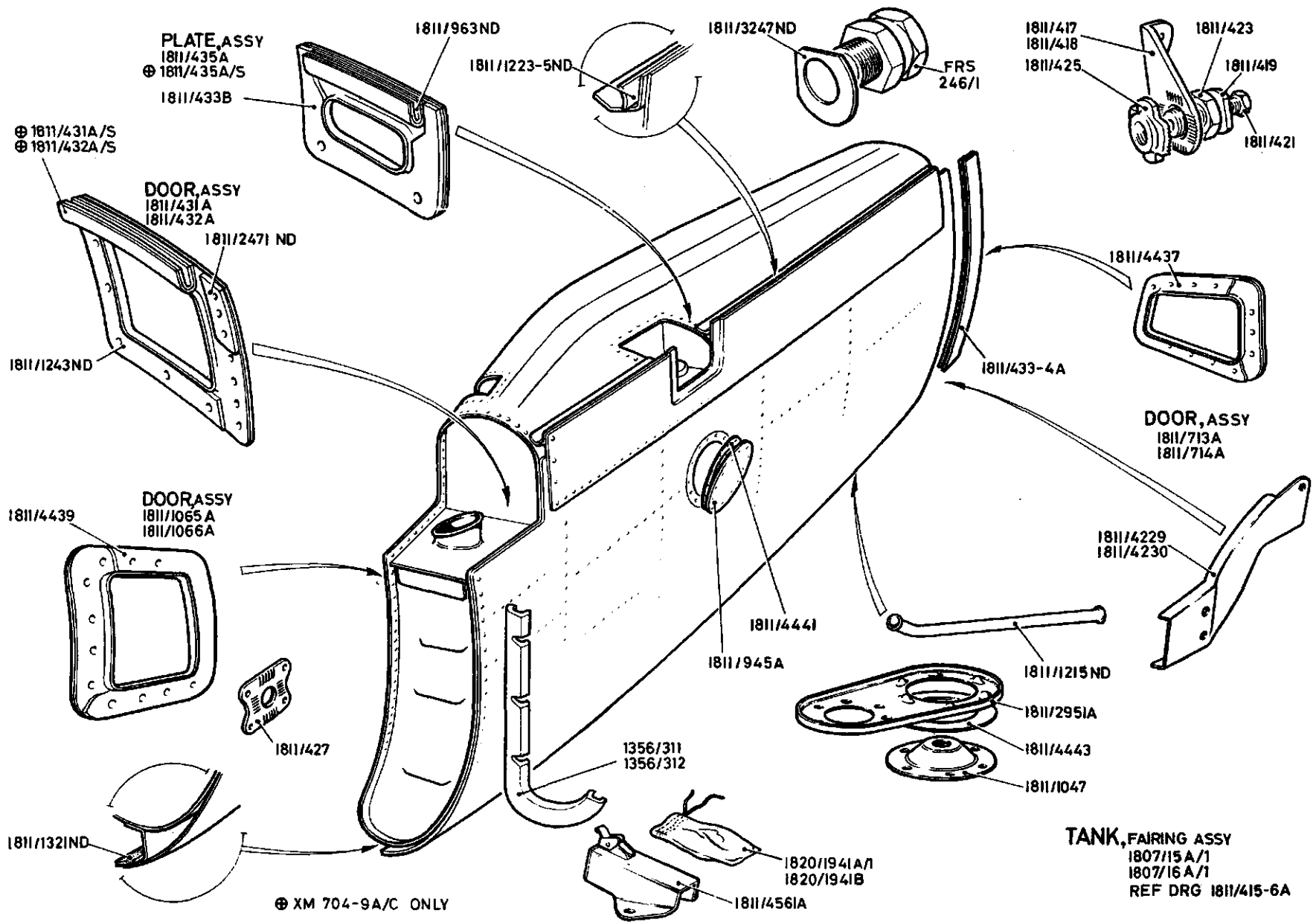
REF. No.	PART NUMBER	DESCRIPTION					No. OFF	MATL. SPEC.	CL. OF ST.	PLATE No.	
		1	2	3	4	5			A.R. L.M.		
		TANK FAIRING TO FUSELAGE ASSY (1811/415-6A)									
		Spares for:-									
2131	1811/431A/S					DOOR assy, port..	1	-	B	RB. 1
2132	1811/432A/S					DOOR assy, starb card	1	-	B	RB. 1
1816	1811/435A/S					PLATE assy, cover	1	-	B	RB. 1

RB.1

TANKS

RB.1

RESTRICTED



Grnd T. Mk.1

RESTRICTED

Plate RB.1
Issued with AL. No. 13

This file was downloaded
from the RTFM Library.

Link: www.scottbouch.com/rtfm

Please see site for usage terms,
and more aircraft documents.

