

Chapter 3  
MAIN PLANES

## LIST OF ILLUSTRATIONS

	<i>Fig.</i>
<i>Nose wheel door ... ..</i>	301
<i>Bomb door hinges ... ..</i>	302
<i>Bomb door hinges ... ..</i>	302A
<i>Bomb door mechanism ... ..</i>	302B
<i>Bomb door mechanism ... ..</i>	302C
<i>Bomb door mechanism ... ..</i>	302D
<i>Main undercarriage door hinges and catch hooks ... ..</i>	303
<i>Main undercarriage door mechanism</i>	303A
<i>Main undercarriage door mechanism</i>	303B
<i>Elevator and aileron hinges... ..</i>	304
<i>Air brake mechanism ... ..</i>	305
<i>Air brake mechanism ... ..</i>	305A
<i>Air brake mechanism ... ..</i>	305B

RESTRICTED

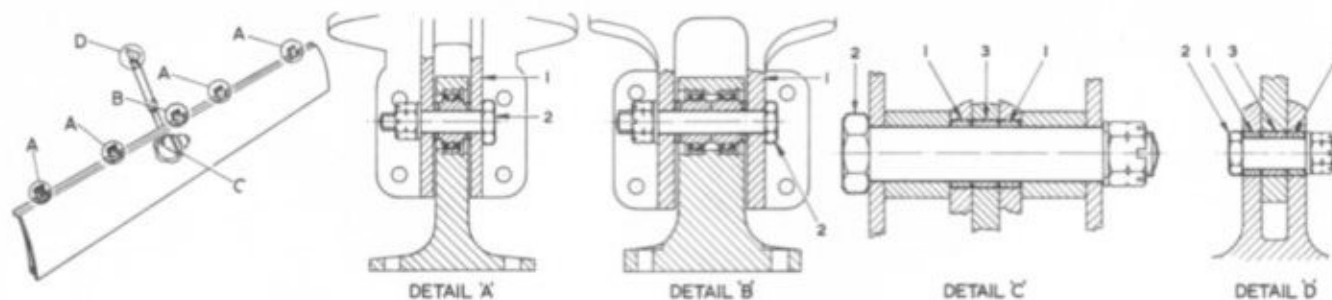


Fig.301. Nose wheel door

Detail	Item	Part and Description	Permissible Worn Dimension (in.)			Clearance New (in.)	Permissible Worn Clearance (in.)	Remarks
			Dimension New (in.)	Non-selective Assembly	Selective Assembly			
A	1	HINGE BRACKET (bore)	$\frac{0.25025}{0.24975}$	0.251	0.252	$\frac{0.00225}{0.00075}$	0.003	
	2	BOLT (o/dia.)	$\frac{0.249}{0.248}$	0.248	0.24675			
B	1	HINGE BRACKET (bore)	$\frac{0.25025}{0.24975}$	0.2508	0.25125	$\frac{0.00095}{0.00000}$	0.0015	
	2	BOLT (o/dia.)	$\frac{0.24975}{0.2493}$	0.2493	0.24825			
C	1	BUSH (bore)	$\frac{0.62525}{0.62475}$	0.62575	0.62725	$\frac{0.003}{0.001}$	0.0035	
	2	BOLT (o/dia.)	$\frac{0.62375}{0.62225}$	0.62225	0.62125			
	3	BUSH (bore)	$\frac{0.62575}{0.6245}$	0.62625	0.62775	$\frac{0.0035}{0.00075}$	0.004	
	2	BOLT (o/dia.)	$\frac{0.62375}{0.62225}$	0.62225	0.6205			
D	1	BUSH (bore)	$\frac{0.37525}{0.37475}$	0.376	0.377	$\frac{0.00225}{0.00075}$	0.003	
	2	BOLT (o/dia.)	$\frac{0.374}{0.373}$	0.373	0.37175			
	3	BUSH (bore)	$\frac{0.3755}{0.3745}$	0.3765	0.3775	$\frac{0.0025}{0.0005}$	0.0035	
	2	BOLT (o/dia.)	$\frac{0.374}{0.373}$	0.373	0.371			

RESTRICTED

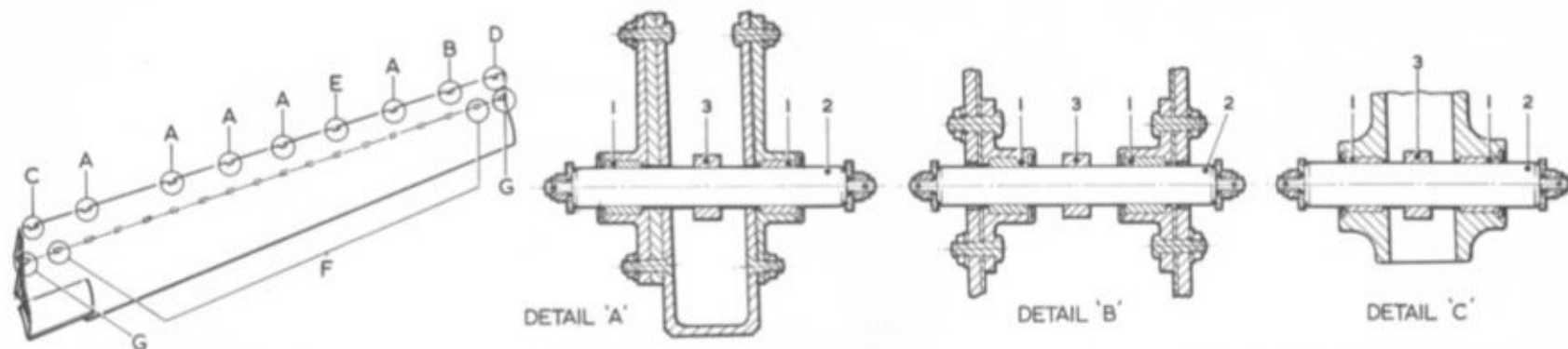


Fig.302. Bomb door hinges

Detail	Item	Part and Description	Dimension New (in.)	Permissible Worn Dimension (in.)		Clearance New (in.)	Permissible Worn Clearance (in.)	Remarks
				Non-selective Assembly	Selective Assembly			
A	1	BUSH (bore)	$\frac{0.7278}{0.72575}$	0.729	0.72975	$\frac{0.00655}{0.004}$	0.008	
	2	PIN (o/dia.)	$\frac{0.72175}{0.72125}$	0.721	0.71775			
	3	HINGE BLOCK (bore)	$\frac{0.72575}{0.7245}$	0.727	0.72775	$\frac{0.0045}{0.00275}$	0.006	
	2	PIN (o/dia.)	$\frac{0.72175}{0.72125}$	0.721	0.7185			
B	1	BUSH (bore)	$\frac{0.7278}{0.72575}$	0.729	0.72975	$\frac{0.00655}{0.004}$	0.008	
	2	PIN (o/dia.)	$\frac{0.72175}{0.72125}$	0.721	0.71775			
	3	HINGE BLOCK (bore)	$\frac{0.72575}{0.7245}$	0.727	0.72775	$\frac{0.0045}{0.00275}$	0.006	
	2	PIN (o/dia.)	$\frac{0.72175}{0.72125}$	0.721	0.7185			
C	1	BUSH (bore)	$\frac{0.87575}{0.8745}$	0.877	0.87775	$\frac{0.0045}{0.00275}$	0.006	
	2	PIN (o/dia.)	$\frac{0.87175}{0.87125}$	0.871	0.8685			
	3	HINGE BLOCK (bore)	$\frac{0.87575}{0.8745}$	0.877	0.87775	$\frac{0.0045}{0.00275}$	0.006	
	2	PIN (o/dia.)	$\frac{0.87175}{0.87125}$	0.871	0.8685			

RESTRICTED

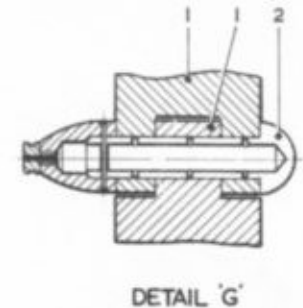
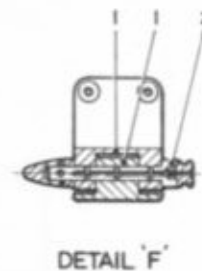
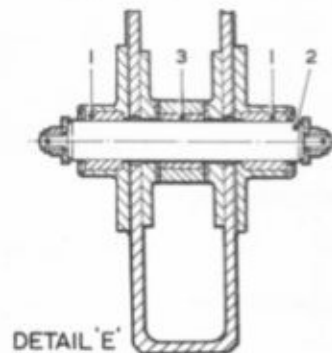
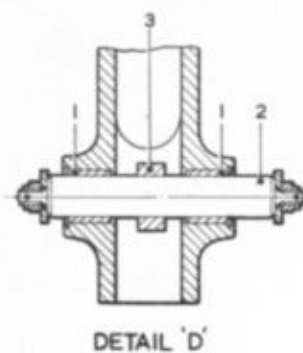


Fig.302A. Bomb door hinges

Detail	Item	Part and Description	Permissible Worn Dimension (in.)				Clearance New (in.)	Permissible Worn Clearance (in.)	Remarks
			Dimension New (in.)	Non-selective Assembly	Selective Assembly				
D	1	BUSH (bore)	$\frac{0.75075}{0.7495}$	0.752	0.75275	$\frac{0.0045}{0.00275}$	0.006		
	2	PIN (o/dia.)	$\frac{0.74675}{0.74625}$	0.746	0.7435				
	3	HINGE BLOCK (bore)	$\frac{0.75075}{0.7495}$	0.752	0.75275	$\frac{0.0045}{0.00275}$	0.006		
	2	PIN (o/dia.)	$\frac{0.74675}{0.74625}$	0.746	0.7435				
E	1	BUSH (bore)	$\frac{0.7278}{0.72575}$	0.729	0.72975	$\frac{0.00655}{0.004}$	0.008		
	2	PIN (o/dia.)	$\frac{0.72175}{0.72125}$	0.721	0.71775				
	3	BUSH (bore)	$\frac{0.72575}{0.7245}$	0.727	0.72775	$\frac{0.0045}{0.00275}$	0.006		
	2	PIN (o/dia.)	$\frac{0.72175}{0.72125}$	0.721	0.7185				
F	1	HINGE BRACKET (bore)	$\frac{0.313}{0.312}$	0.314	0.317	$\frac{0.0035}{0.0000}$	0.005		
	2	PIN (o/dia.)	$\frac{0.312}{0.3095}$	0.309	0.307				
G	1	HINGE BRACKET (bore)	$\frac{0.75075}{0.7495}$	0.7515	0.7525	$\frac{0.00275}{0.0005}$	0.0035		
	2	PIN (o/dia.)	$\frac{0.749}{0.748}$	0.748	0.746				

RESTRICTED

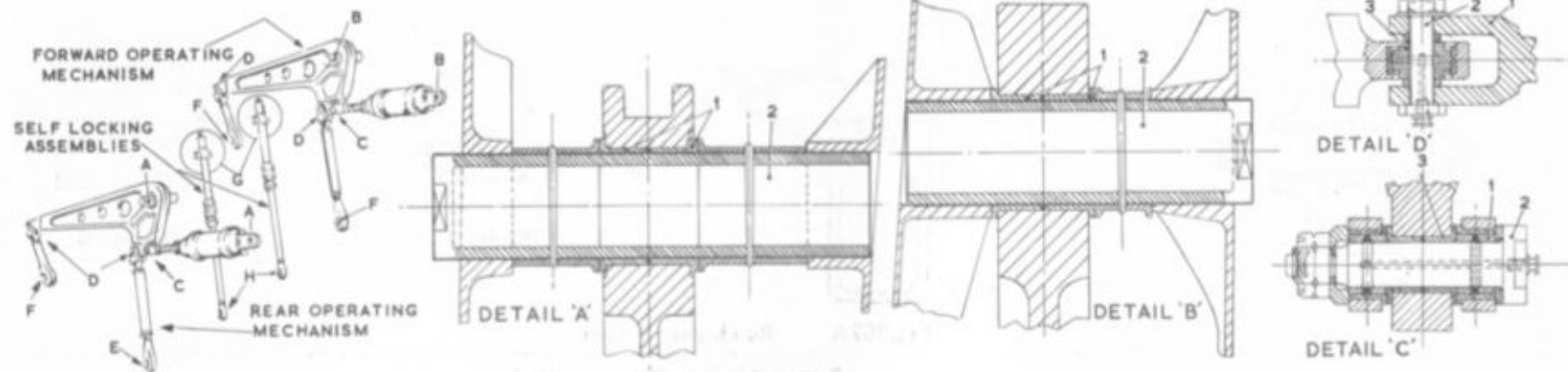


Fig.302B. Bomb door mechanism

Detail	Item	Part and Description	Dimension New (in.)	Permissible Worn Dimension (in.)		Clearance New (in.)	Permissible Worn Clearance (in.)	Remarks
				Non-selective Assembly	Selective Assembly			
A B	1	BEARING BUSHES (bore)	$\frac{2.25125}{2.24925}$	2.252	0.2545	$\frac{0.0055}{0.00125}$	0.0065	
	2	PIN (o/dia.)	$\frac{2.248}{2.24575}$	2.2455	0.24275			
C	1	BUSH (bore)	$\frac{1.00075}{0.9995}$	1.001	1.00175	$\frac{0.002}{0.00025}$	0.0025	
	2	BOLT (o/dia.)	$\frac{0.99925}{0.99875}$	0.9985	0.997			
	3	BUSH (bore)	$\frac{1.00075}{0.9995}$	1.001	1.00175	$\frac{0.002}{0.00025}$	0.0025	
	2	BOLT (o/dia.)	$\frac{0.99925}{0.99875}$	0.9985	0.997			
D	1	FORK END (bore)	$\frac{0.5005}{0.4995}$	0.501	0.50175	$\frac{0.00125}{-0.00025}$	0.002	
	2	BOLT (o/dia.)	$\frac{0.49975}{0.49925}$	0.499	0.4975			
	3	BEARING (bore)	$\frac{0.5005}{0.4995}$	0.501	0.50175	$\frac{0.00125}{-0.00025}$	0.002	
	2	BOLT (o/dia.)	$\frac{0.49975}{0.49925}$	0.499	0.4975			

RESTRICTED

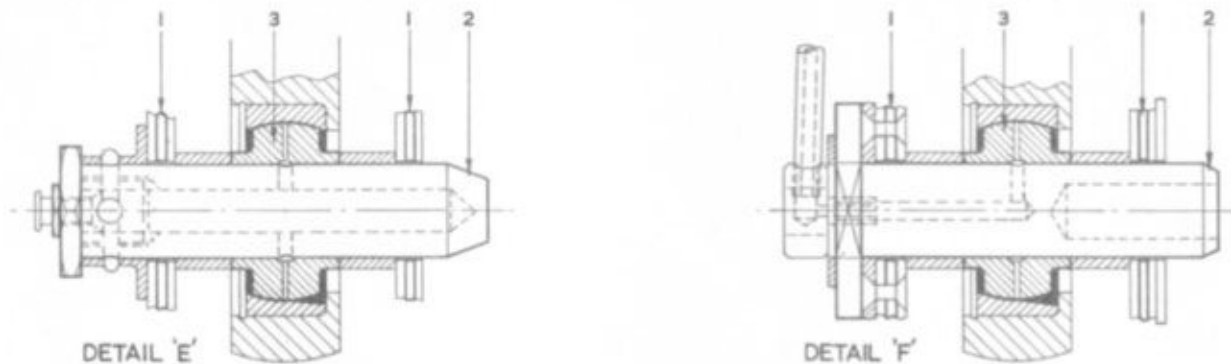


Fig.302C. Bomb door mechanism

Detail	Item	Part and Description	Dimension New (in.)	Permissible Worn Dimension (in.)		Clearance New (in.)	Permissible Worn Clearance (in.)	Remarks
				Non-selective Assembly	Selective Assembly			
E	1	RIB SIDE MEMBER (bore)	$\frac{0.87575}{0.8745}$	0.876	0.87775	$\frac{0.0035}{0.00075}$	0.004	
	2	PIN (o/dia.)	$\frac{0.87375}{0.87225}$	0.872	0.8705			
	3	BEARING (bore)	$\frac{0.8755}{0.87475}$	0.87575	0.8775	$\frac{0.00325}{0.001}$	0.00375	
	2	PIN (o/dia.)	$\frac{0.87375}{0.87225}$	0.872	0.871			
F	1	RIB SIDE MEMBER (bore)	$\frac{0.87575}{0.8745}$	0.876	0.87675	$\frac{0.002}{0.00025}$	0.0025	
	2	PIN (o/dia.)	$\frac{0.87425}{0.87375}$	0.8735	0.872			
	3	BEARING (bore)	$\frac{0.8755}{0.87475}$	0.876	0.87675	$\frac{0.00175}{0.0005}$	0.0025	
	2	PIN (o/dia.)	$\frac{0.87425}{0.87375}$	0.8735	0.87225			

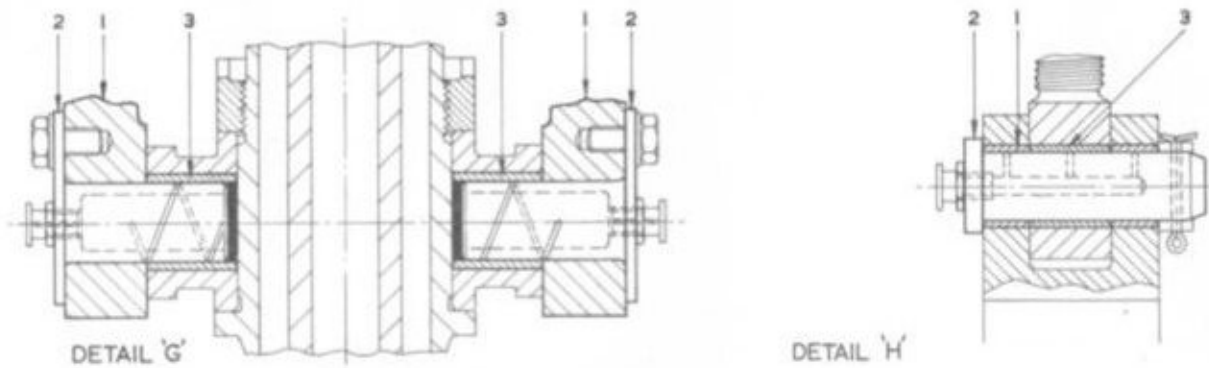


Fig.302D. Bomb door mechanism

Detail	Item	Part and Description	Dimension New (in.)	Permissible Worn Dimension (in.)		Clearance New (in.)	Permissible Worn Clearance (in.)	Remarks
				Non-selective Assembly	Selective Assembly			
G	1	PIVOT BRACKET (bore)	$\frac{0.75075}{0.7495}$	0.7513	0.7528	$\frac{0.00345}{0.0007}$	0.004	
	2	PIN (o/dia.)	$\frac{0.7488}{0.7473}$	0.7473	0.7455			
	3	BUSH (bore)	$\frac{0.75075}{0.7495}$	0.7513	0.7528	$\frac{0.00345}{0.0007}$	0.004	
	2	PIN (o/dia.)	$\frac{0.7488}{0.7473}$	0.7473	0.7455			
H	1	BUSH (bore)	$\frac{0.62575}{0.6245}$	0.6265	0.6305	$\frac{0.00575}{0.0005}$	0.0065	
	2	PIN (o/dia.)	$\frac{0.624}{0.620}$	0.620	0.618			
	3	BUSH (bore)	$\frac{0.62575}{0.6245}$	0.6265	0.6305	$\frac{0.00575}{0.0005}$	0.0065	
	2	PIN (o/dia.)	$\frac{0.624}{0.620}$	0.620	0.618			

RESTRICTED

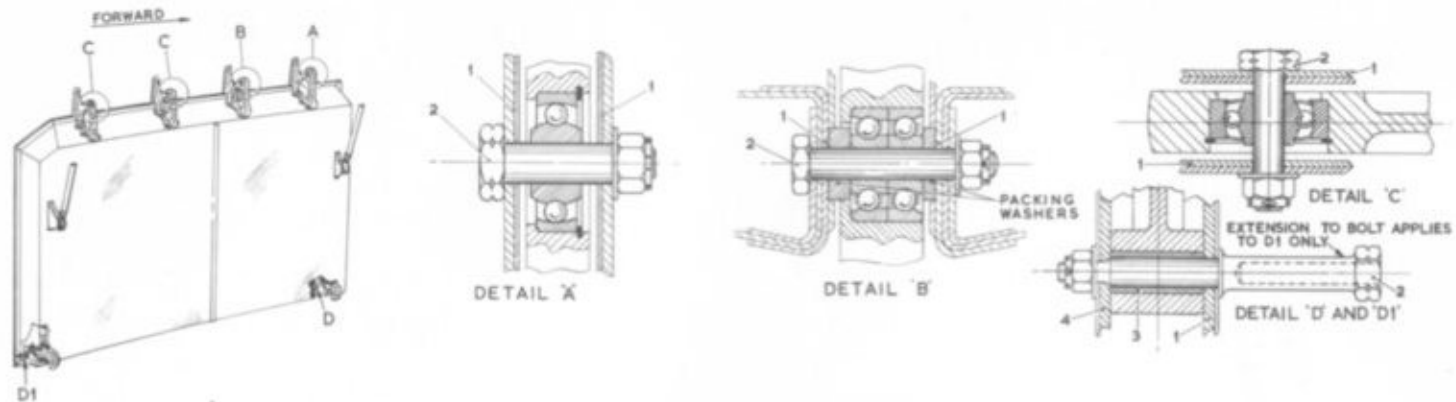


Fig.303. Main undercarriage door hinges and catch hooks

Detail	Item	Part and Description	Dimension New (in.)	Permissible Worn Dimension (in.)		Clearance New (in.)	Permissible Worn Clearance (in.)	Remarks
				Non-selective Assembly	Selective Assembly			
A	1	HINGE BRACKET (bore)	$\frac{0.5008}{0.5003}$	0.5015	0.502	$\frac{0.0013}{0.0003}$	0.002	
	2	BOLT (o/dia.)	$\frac{0.5000}{0.4995}$	0.4995	0.4983			
B	1	HINGE BRACKET (bore)	$\frac{0.3937}{0.3933}$	0.394	0.3947	$\frac{0.0015}{0.0006}$	0.002	
	2	BOLT (o/dia.)	$\frac{0.3927}{0.3922}$	0.392	0.3913			
C	1	HINGE BRACKET (bore)	$\frac{0.3758}{0.3753}$	0.3764	0.3769	$\frac{0.0019}{0.0009}$	0.0025	
	2	BOLT (o/dia.)	$\frac{0.3744}{0.3739}$	0.3739	0.3728			
D D.1	1	FULCRUM BRACKET (bore)	$\frac{0.3775}{0.377}$	0.378	0.379	$\frac{0.003}{0.002}$	0.004	
	2	BOLT (o/dia.)	$\frac{0.375}{0.3745}$	0.374	0.373			
	3	BUSH (bore)	$\frac{0.37525}{0.37475}$	0.3755	0.376	$\frac{0.00075}{-0.00025}$	0.001	
	2	BOLT (o/dia.)	$\frac{0.375}{0.3745}$	0.3745	0.37375			
	4	FULCRUM BRACKET (bore)	$\frac{0.251}{0.250}$	0.252	0.253	$\frac{0.003}{0.001}$	0.004	
	2	BOLT (o/dia.)	$\frac{0.249}{0.248}$	0.248	0.246			

RESTRICTED

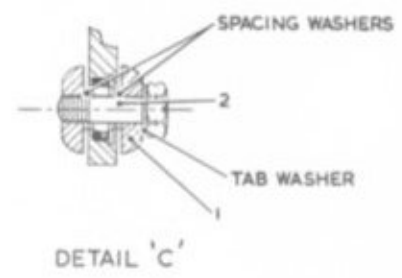
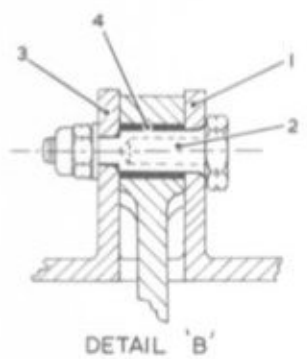
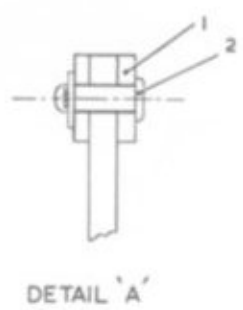
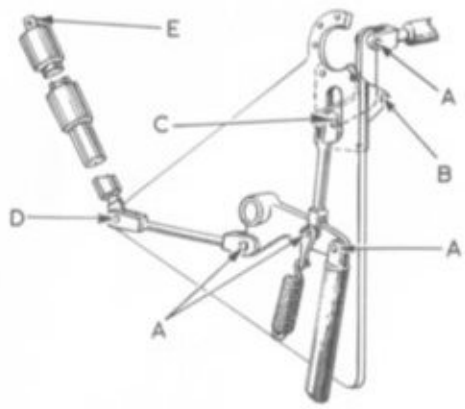
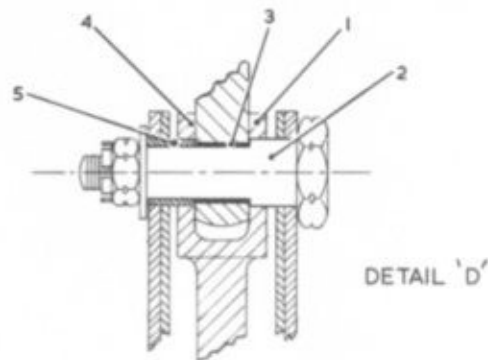
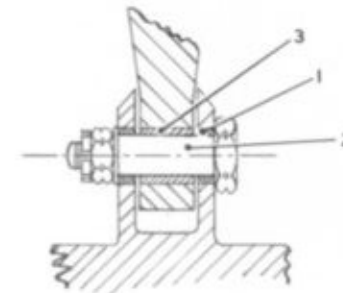


Fig. 303A Main undercarriage door mechanism

Detail	Item	Part and Description	Dimension New (in.)	Permissible Worn Dimension (in.)		Clearance New (in.)	Permissible Worn Clearance (in.)	Remarks
				Non-selective Assembly	Selective Assembly			
A	1	FORK END (bore)	$\frac{0.2505}{0.2495}$	0.251	0.252	$\frac{0.0025}{0.0005}$	0.003	
	2	PIN (o/dia.)	$\frac{0.249}{0.248}$	0.248	0.2465			
B	1	BRACKET (bore)	$\frac{0.377}{0.3765}$	0.378	0.379	$\frac{0.0015}{0.0000}$	0.0025	
	2	BOLT (o/dia.)	$\frac{0.3765}{0.3755}$	0.3755	0.374			
	3	BRACKET (bore)	$\frac{0.2505}{0.2495}$	0.251	0.252	$\frac{0.0025}{0.0005}$	0.003	
	2	BOLT (o/dia.)	$\frac{0.249}{0.248}$	0.248	0.2465			
	4	BUSH (bore)	$\frac{0.3771}{0.3766}$	0.378	0.379	$\frac{0.0026}{0.0001}$	0.0035	
	2	BOLT (o/dia.)	$\frac{0.3765}{0.3745}$	0.3745	0.3731			
C	1	LINK (bore)	$\frac{0.2505}{0.2495}$	0.251	0.252	$\frac{0.0025}{0.0005}$	0.003	
	2	BOLT (o/dia.)	$\frac{0.249}{0.248}$	0.248	0.2465			



DETAIL 'D'



DETAIL 'E'

Fig.303B. Main undercarriage door mechanism

Detail	Item	Part and Description	Permissible Worn Dimension (in.)				Clearance New (in.)	Permissible Worn Clearance (in.)	Remarks
			Dimension New (in.)	Non-selective Assembly	Selective Assembly				
D	1	LINK (bore)	$\frac{0.62575}{0.6245}$	0.6267	0.62825	$\frac{0.0035}{0.00075}$	0.0045		
	2	BOLT (o/dia.)	$\frac{0.62375}{0.62225}$	0.6222	0.620	$\frac{0.0025}{0.0005}$	0.003		
	3	BUSH (bore)	$\frac{0.5005}{0.4995}$	0.5005	0.5005	$\frac{0.0025}{0.0005}$	0.003		
	2	BOLT (o/dia.)	$\frac{0.499}{0.498}$	0.4975	0.4965	$\frac{0.0025}{0.0005}$	0.003		
	4	LINK (bore)	$\frac{0.62575}{0.6245}$	0.6267	0.62825	$\frac{0.0035}{0.00075}$	0.0045		
	5	BUSH (o/dia.)	$\frac{0.62375}{0.62225}$	0.6222	0.620	$\frac{0.0035}{0.00075}$	0.0045		
E	1	BUSH (bore)	$\frac{0.3755}{0.3745}$	0.3755	0.3755	$\frac{0.00175}{0.00025}$	0.0025		
	2	BOLT (o/dia.)	$\frac{0.37425}{0.37375}$	0.373	0.372	$\frac{0.00175}{0.00025}$	0.003		
	3	BUSH (bore)	$\frac{0.3755}{0.3745}$	0.376	0.37725	$\frac{0.00175}{0.00025}$	0.003		
	2	BOLT (o/dia.)	$\frac{0.37425}{0.37375}$	0.373	0.3715	$\frac{0.00175}{0.00025}$	0.003		

RESTRICTED

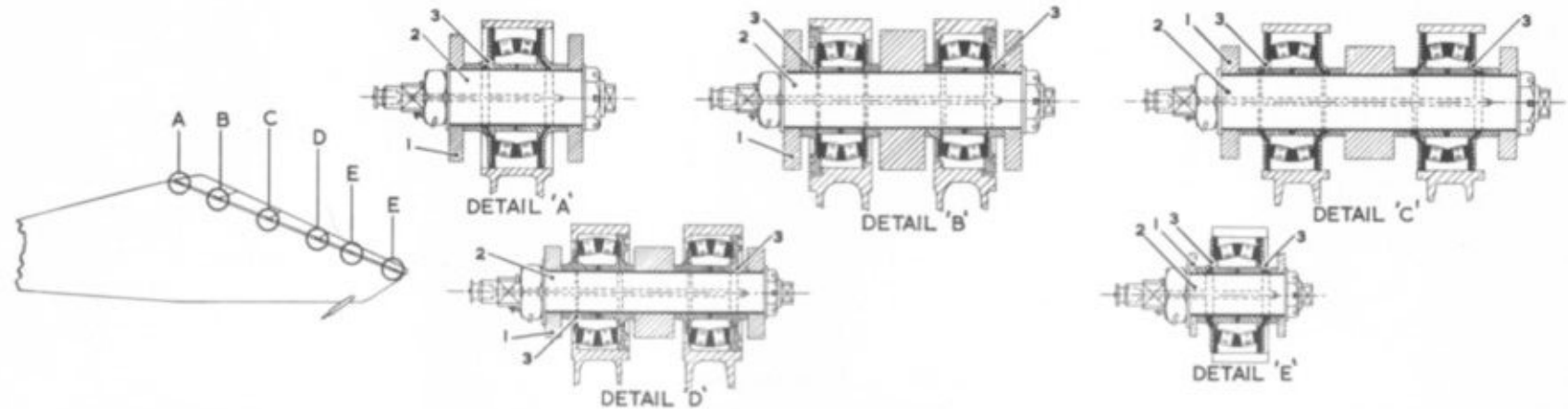
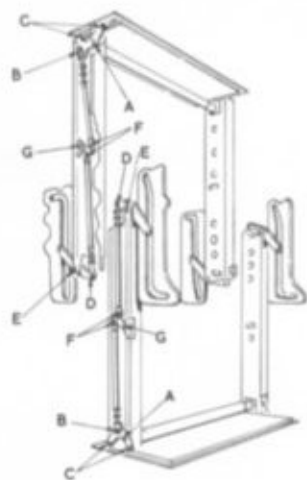


Fig.304. Elevator and aileron hinges

Detail	Item	Part and Description	Dimension New (in.)	Permissible Worn Dimension (in.)		Clearance New (in.)	Permissible Worn Clearance (in.)	Remarks
				Non-selective Assembly	Selective Assembly			
A B C	1	BRACKET (bore)	$\frac{1.0005}{0.99975}$	1.00075	1.00125	$\frac{0.00175}{0.0005}$	0.002	
	2	BOLT (o/dia.)	$\frac{0.99925}{0.99875}$	0.99875	0.99775			
	3	BUSH (bore)	$\frac{1.0005}{0.99975}$	1.00125	1.00175	$\frac{0.00175}{0.0005}$	0.0025	
	2	BOLT (o/dia.)	$\frac{0.99925}{0.99875}$	0.99875	0.99725			
D E	1	BRACKET (bore)	$\frac{0.7505}{0.74975}$	0.75075	0.75125	$\frac{0.00175}{0.0005}$	0.002	
	2	BOLT (o/dia.)	$\frac{0.74925}{0.74875}$	0.74875	0.74775			
	3	BUSH (bore)	$\frac{0.7505}{0.74975}$	0.75125	0.75175	$\frac{0.00175}{0.0005}$	0.0025	
	2	BOLT (o/dia.)	$\frac{0.74925}{0.74875}$	0.74875	0.74725			



EXISTING WASHERS  
AT THESE POINTS  
MUST BE REFITTED  
ON ASSEMBLY

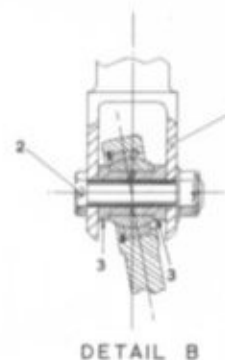
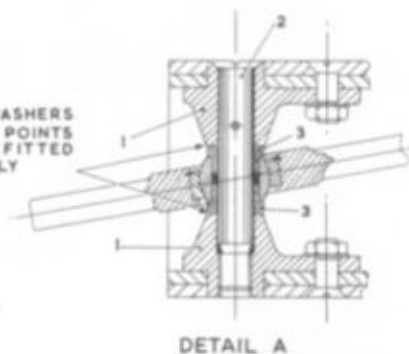


Fig.305. Air brake mechanism

Detail	Item	Part and Description	Dimension New (in.)	Permissible Worn Dimension (in.)		Clearance New (in.)	Permissible Worn Clearance (in.)	Remarks
				Non-selective Assembly	Selective Assembly			
A	1	BRACKET (bore)	$\frac{0.4395}{0.4375}$	0.440	0.4407	$\frac{0.0028}{0.0003}$	0.0035	
	2	BOLT (o./dia.)	$\frac{0.4372}{0.4367}$	0.4365	0.434			
	3	BUSH (bore)	$\frac{0.438}{0.437}$	0.4385	0.4392	$\frac{0.0013}{-0.0002}$	0.002	
	2	BOLT (o./dia.)	$\frac{0.4372}{0.4367}$	0.4365	0.435			
B	1	FORK-END (bore)	$\frac{0.3145}{0.3125}$	0.315	0.3157	$\frac{0.0028}{0.0003}$	0.0035	
	2	BOLT (o./dia.)	$\frac{0.3122}{0.3117}$	0.3115	0.309			
	3	BUSH (bore)	$\frac{0.313}{0.312}$	0.3135	0.3142	$\frac{0.0013}{-0.0002}$	0.002	
	2	BOLT (o./dia.)	$\frac{0.3122}{0.3117}$	0.3115	0.310			

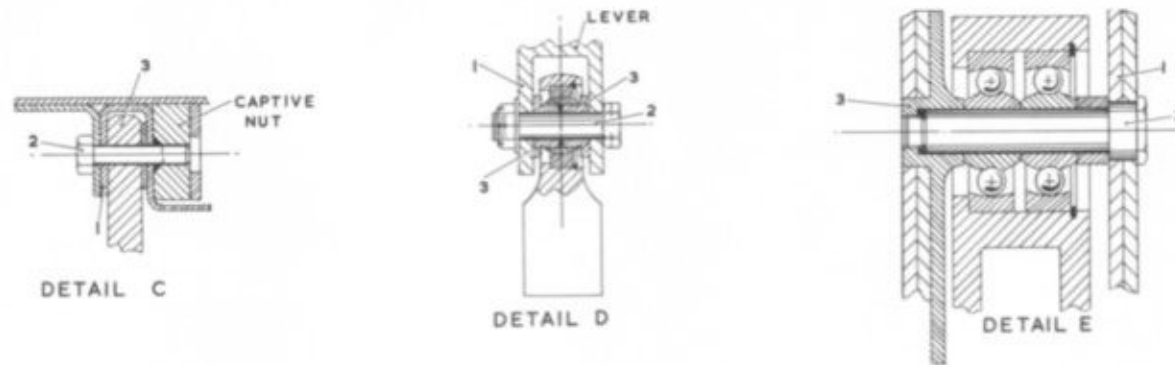


Fig.305A. Air brake mechanism

Detail	Item	Part and Description	Dimension New (in.)	Permissible Worn Dimension (in.)			Permissible Worn Clearance (in.)	Remarks
				Non-selective Assembly	Selective Assembly	Clearance New (in.)		
C	1	CHANNEL (bore)	$\frac{0.252}{0.250}$	0.25275	0.25325	$\frac{0.00275}{0.00025}$	0.0035	
	2	BOLT (o/dia.)	$\frac{0.24975}{0.24925}$	0.24925	0.2465			
	3	LEVER (bore)	$\frac{0.252}{0.250}$	0.25275	0.25325	$\frac{0.00275}{0.00025}$	0.0035	
	2	BOLT (o/dia.)	$\frac{0.24975}{0.24925}$	0.24925	0.2465			
D	1	LEVER (bore)	$\frac{0.313}{0.312}$	0.3135	0.3142	$\frac{0.0013}{-0.0002}$	0.002	
	2	BOLT (o/dia.)	$\frac{0.3122}{0.3117}$	0.3115	0.310			
	3	BUSH (bore)	$\frac{0.313}{0.312}$	0.3135	0.3142	$\frac{0.0013}{-0.0002}$	0.002	
	2	BOLT (o/dia.)	$\frac{0.3122}{0.3117}$	0.3115	0.310			
E	1	SIDE MEMBER (bore)	$\frac{0.6258}{0.6245}$	0.6262	0.6267	$\frac{0.0016}{-0.0002}$	0.002	
	2	BOLT (o/dia.)	$\frac{0.6247}{0.6242}$	0.6242	0.6225			
	3	BOSS (bore)	$\frac{0.5005}{0.4995}$	0.501	0.5017	$\frac{0.0013}{-0.0002}$	0.002	
	2	BOLT (o/dia.)	$\frac{0.4997}{0.4992}$	0.499	0.4975			

RESTRICTED

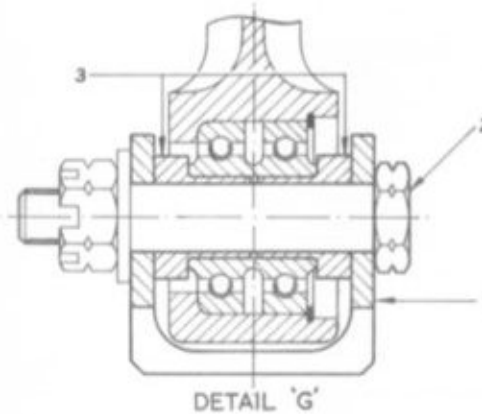
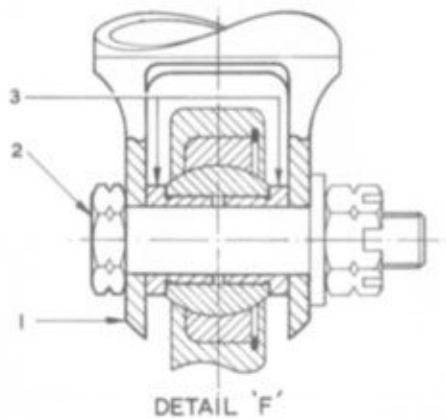


Fig.305B. Air brake mechanism

Detail	Item	Part and Description	Dimension New (in.)	Permissible Worn Dimension (in.)		Clearance New (in.)	Permissible Worn Clearance (in.)	Remarks
				Non-selective Assembly	Selective Assembly			
F	1	FORK-END (bore)	$\frac{0.3145}{0.3125}$	0.315	0.3157	$\frac{0.0028}{0.0003}$	0.3035	
	2	BOLT (o/dia.)	$\frac{0.3122}{0.3117}$	0.3115	0.309			
	3	BUSH (bore)	$\frac{0.313}{0.312}$	0.3135	0.3142	$\frac{0.0013}{-0.0002}$	0.002	
	2	BOLT (o/dia.)	$\frac{0.3122}{0.3117}$	0.3115	0.310			
G	1	BRACKET (bore)	$\frac{0.313}{0.312}$	0.3135	0.3142	$\frac{0.0013}{-0.0002}$	0.002	
	2	BOLT (o/dia.)	$\frac{0.3122}{0.3117}$	0.3115	0.310			
	3	BUSH (bore)	$\frac{0.313}{0.3125}$	0.3135	0.3142	$\frac{0.0013}{-0.0003}$	0.002	
	2	BOLT (o/dia.)	$\frac{0.3122}{0.3117}$	0.3115	0.3105			

RESTRICTED

This file was downloaded  
from the RTFM Library.  
Link: [www.scottbouch.com/rtfm](http://www.scottbouch.com/rtfm)

Please see site for usage terms,  
and more aircraft documents.

