

## Chapter 4A

## GENERAL SERVICING

## LIST OF CONTENTS

	Para.
Introduction ... ..	1
Ground equipment ... ..	2

	Para.
Access panels ... ..	3
Order of dismantling ... ..	4
Trestling sections of aircraft ...	5

	Para.
Component weights and dimensions	6
Drainage holes ... ..	7

## LIST OF TABLES

	Table
List of ground servicing equipment	1

## LIST OF ILLUSTRATIONS

	Fig.
Access panels ... ..	1
Component weights and dimensions	2
Sections of aircraft ... ..	3
Trestling centre rear fuselage ...	4
Fin verticality jig ... ..	5

**Introduction**

1. This chapter contains information on general servicing appertaining to the alterations on the aircraft to accommodate the E.C.M. equipment. For information on the remainder of the aircraft reference should be made to Chap.4 of this section.

**GROUND EQUIPMENT**

2. The ground equipment, provided for handling, and servicing the E.C.M. equipment and the sections of the aircraft accommodating the equipment, is listed in Table I - Ground Servicing Equipment, at the end of this chapter. Reference should be made to Chap.4 of this section for information regarding ground equipment for the aircraft other than that listed in this chapter.

**ACCESS PANELS**

3. Servicing doors and removable

panels are provided for access to the equipment and servicing points in the rear fuselage and the bleed air turbine situated aft of the starboard undercarriage. The positions of the doors and panels are illustrated in fig.1.

**ORDER OF DISMANTLING**

4. Detailed information on the removal of individual sections of the tail position of the aircraft are given in the relevant chapters in Sect.3, or Sect.4 of this book. The sections are illustrated in fig.2 of this chapter and the suggested sequence of dismantling is as follows:-

(1) Counterpoise plates	Sect.3, Chap.1A
(2) Splitters	Sect.3, Chap.1A
(3) Jet pipe end caps	Sect.4, Chap.1A
(4) Jet pipes	Sect.4, Chap.1
(5) Rudder	Sect.3, Chap.3A
(6) Rear radome	Sect.3, Chap.16

(7) Rear fuselage - port section	Sect.3, Chap.1A
(8) Rear fuselage - starboard section	Sect.3, Chap.1A
(9) Rear fuselage - centre section	Sect.3, Chap.1A

**TRESTLING SECTIONS OF AIRCRAFT**

5. The sections for which trestlies are provided are trestled as shown in fig.3.

**COMPONENTS WEIGHTS AND DIMENSIONS**

6. The weights and dimensions of the various components are given in the key to fig.3.

**DRAINAGE HOLES**

7. Drainage holes, which must be kept clear at all times, are located in the outer skin on the bottom of the rear fuselage and in the bottom of the rudder.

**RESTRICTED**

KEY  
 D-DZUS P-PRESS TO OPEN  
 S-SCREW H-HINGE  
 J-JACK OPERATED

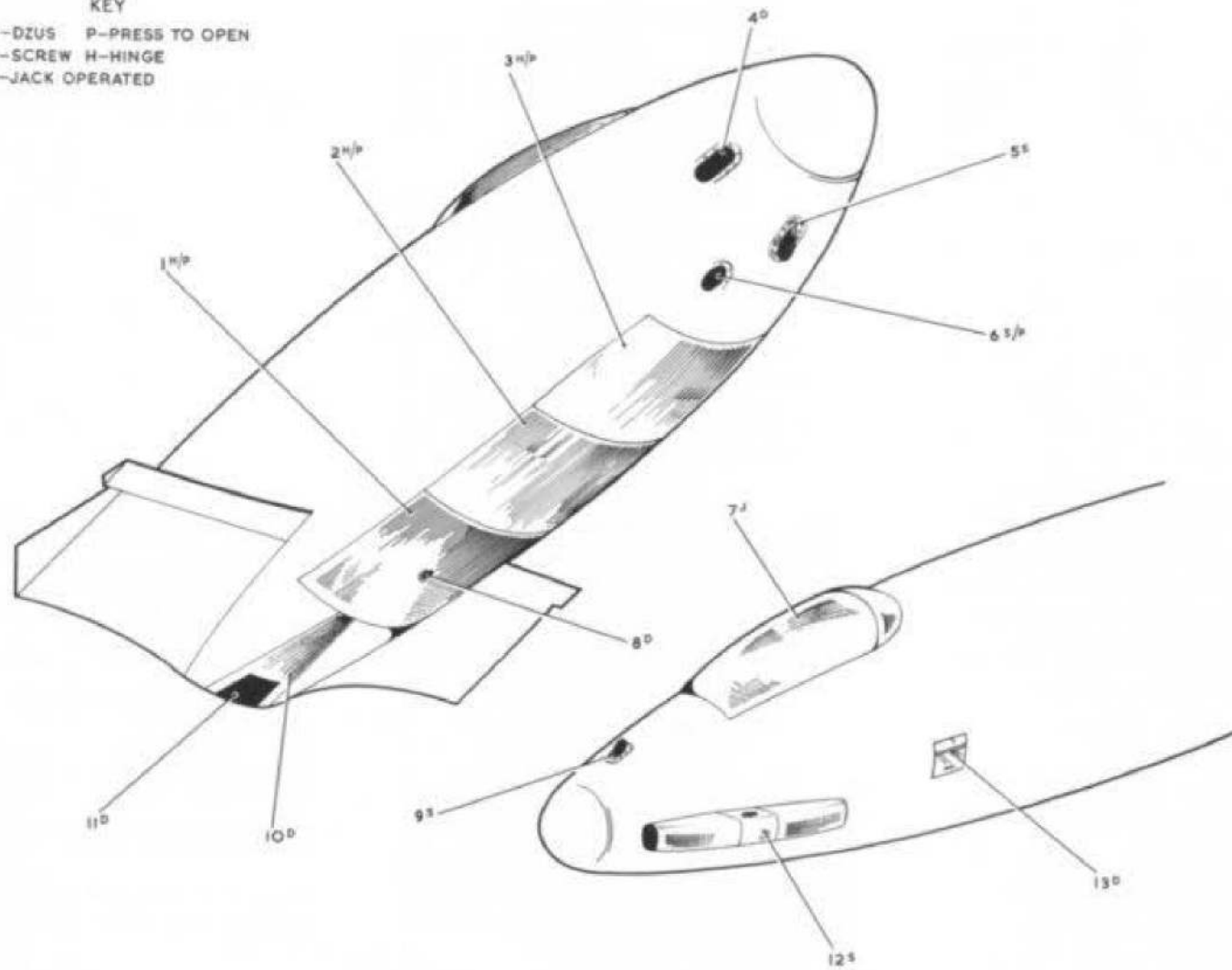


Fig. 1. Access panels.  
**RESTRICTED**

**KEY TO FIG. 1**  
**ACCESS PANELS AND DOORS**

- |   |  |    |  |
|---|--|----|--|
| 1 | E.C.M. EQUIPMENT FRONT ACCESS<br>DOOR  | 7  | BRAKE PARACHUTE                        |
| 2 | E.C.M. EQUIPMENT CENTRE ACCESS<br>DOOR | 8  | GROUND CONNECTION HEATING              |
| 3 | E.C.M EQUIPMENT REAR ACCESS<br>DOOR    | 9  | NAVIGATION LIGHT                       |
| 4 | PNEUMATIC CHARGE POINT                 | 10 | RUDDER POWER UNITS                     |
| 5 | NAVIGATION LIGHT                       | 11 | TAIL BUMPER UNIT                       |
| 6 | SCANNER COOLING                        | 12 | FREON CONDENSER (E.C.M.)               |
|   |  | 13 | GROUND I/C SOCKET - REARWARD<br>TOWING |

**RESTRICTED**

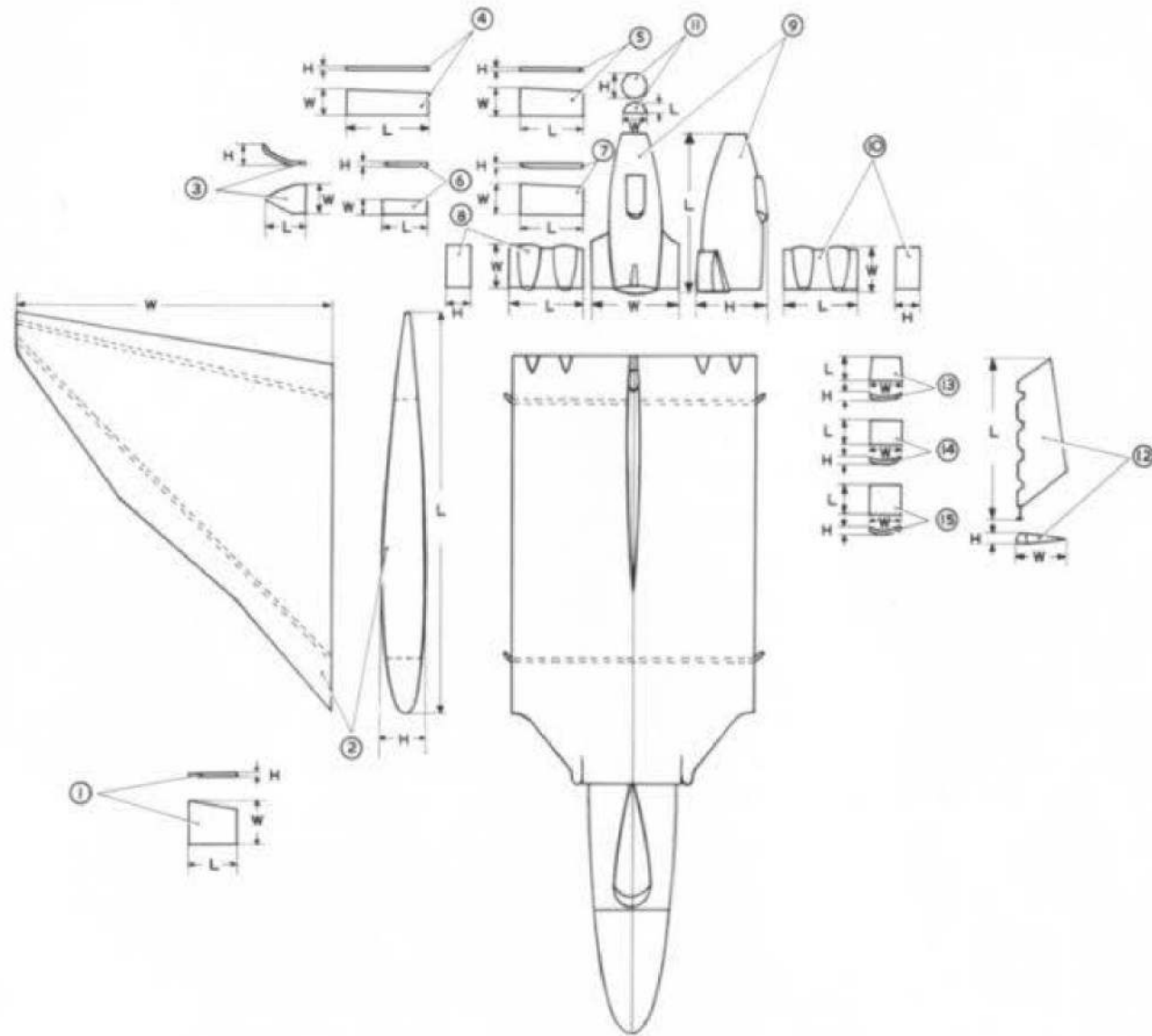


Fig. 2. Component weights and dimensions.

**RESTRICTED**

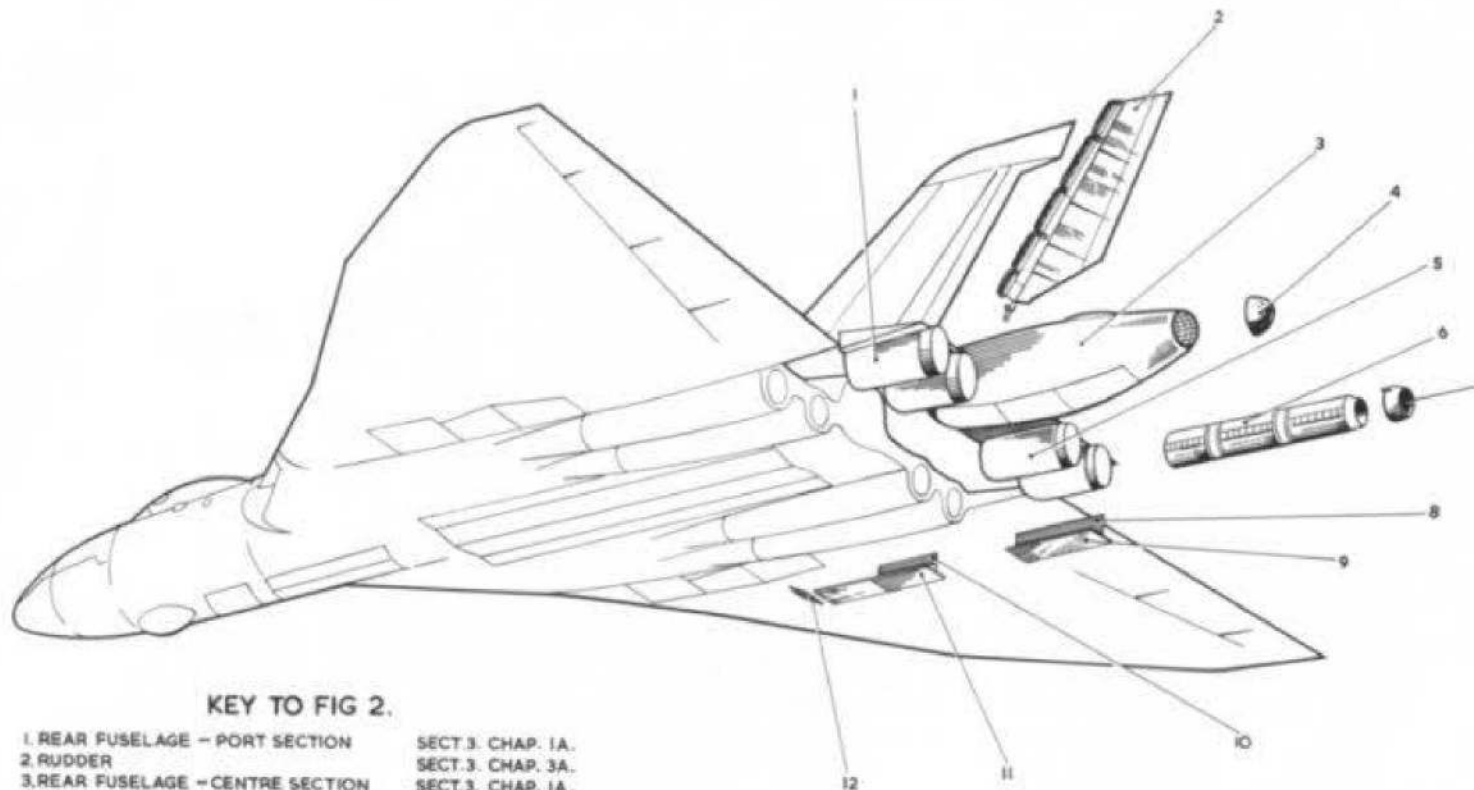
## KEY TO FIG.2

## COMPONENTS WEIGHTS AND DIMENSIONS

Item	Components	Length ft.	Width ft.	Height ft.	Structure Tare Weight lb.
1	TURBO-ALTERNATOR ACCESS DOOR	4.41	4.1	0.08	17.6
2	(WING - port	50.0	36.2	5.0	6,256 *
	(WING - starboard	50.0	36.2	5.0	6,251 *
3	FORWARD COUNTERPOISE PLATE FAIRING	4.0	3.58	0.5	17
4	FORWARD COUNTERPOISE PLATE	7.6	3.08	0.08	39
5	REAR COUNTERPOISE PLATE	5.75	3.25	0.08	31
6	FORWARD SPLITTER	3.87	1.75	0.16	10
7	REAR SPLITTER (including fairing)	5.75	2.54	0.16	23
8	REAR FUSELAGE - starboard section	8.25	5.06	3.33	258
9	REAR FUSELAGE - centre section	18.51	10.6	6.33	962 *
10	REAR FUSELAGE - port section	8.25	5.00	3.33	258
11	REAR RADOME	1.54	2.47	2.47	14
12	RUDDER	19.25	6.0	1.0	305
13	CENTRE REAR FUSELAGE ACCESS DOOR - rear	3.25	4.0	0.87	22
14	CENTRE REAR FUSELAGE ACCESS DOOR - centre	3.29	4.08	0.79	23
15	CENTRE REAR FUSELAGE ACCESS DOOR - forward	4.27	4.04	0.79	27

\* Less doors, and other items shown separately.

RESTRICTED

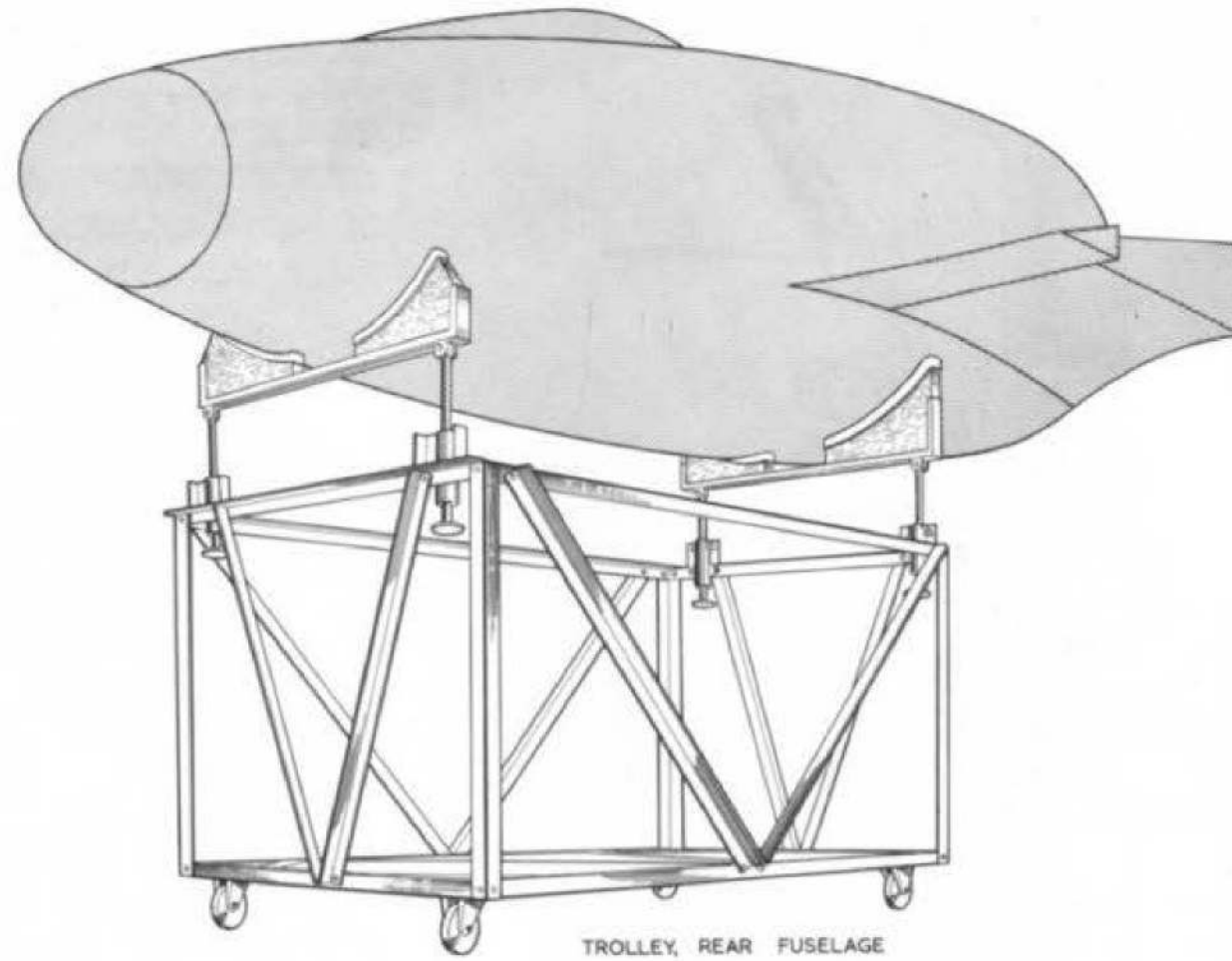


KEY TO FIG 2.

- |  |                   |
|--|-------------------|
| 1. REAR FUSELAGE - PORT SECTION        | SECT.3. CHAP. 1A. |
| 2. RUDDER                              | SECT.3. CHAP. 3A. |
| 3. REAR FUSELAGE - CENTRE SECTION      | SECT.3. CHAP. 1A. |
| 4. REAR RADOME                         | SECT.3. CHAP. 16. |
| 5. REAR FUSELAGE - STARBOARD SECTION   | SECT.3. CHAP. 1A. |
| 6. JET PIPE                            | SECT.4. CHAP. 1.  |
| 7. JET PIPE END CAP                    | SECT.3. CHAP. 1A. |
| 8. REAR SPLITTER                       | SECT.3. CHAP. 1A. |
| 9. REAR COUNTERPOISE PLATE             | SECT.3. CHAP. 1A. |
| 10. FORWARD SPLITTER                   | SECT.3. CHAP. 1A. |
| 11. FORWARD COUNTERPOISE PLATE         | SECT.3. CHAP. 1A. |
| 12. FORWARD COUNTERPOISE PLATE FAIRING | SECT.3. CHAP. 1A. |

Fig.3. Sections of aircraft.

**RESTRICTED**



TROLLEY, REAR FUSELAGE

Fig. 4. Trestling centre rear fuselage.  
**RESTRICTED**

#### FIN VERTICALITY CHECK

TO CHECK THE FIN VERTICALITY PROCEED AS FOLLOWS:-

- (1) ENSURE THAT THE SIDE BRACKET IS SET CORRECTLY, I.E., PRESSING FIRMLY AGAINST THE STOP ON THE CENTRE TUBE, IF NECESSARY, TIGHTEN THE SECURING BOLT.
- (2) REMOVE THE LOCATING PIN AT THE UPPER END OF THE TOOL.
- (3) INSERT THE PLUG END OF THE TOOL INTO THE BOTTOM HINGE BRACKET ON THE FIN POST.
- (4) SECURE THE TOOL IN POSITION BY PASSING THE LOCATING PIN THROUGH THE CENTRE HINGE BRACKET AND INTO THE TOOL.
- (5) PLACE A CLINOMETER ON THE SIDE BRACKET THE READING MUST BE 0 DEG. ± 15 MIN. IF THE FORE-AND-AFT HINGE LINE IS CORRECT.
- (6) PLACE THE CLINOMETER ON THE TRANSVERSE BRACKET, IF THE VERTICALITY IS CORRECT, THE READING MUST BE 0 DEG. ± 15 MIN.

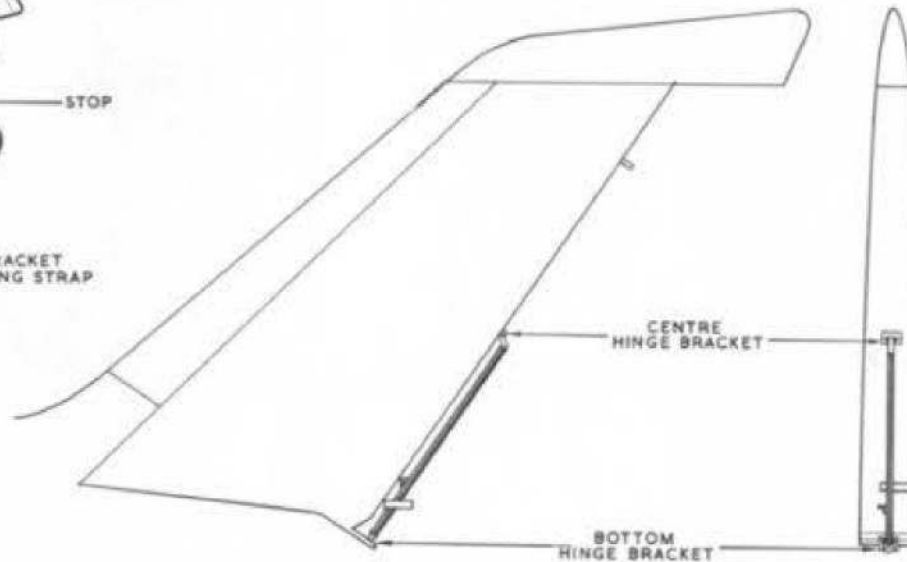
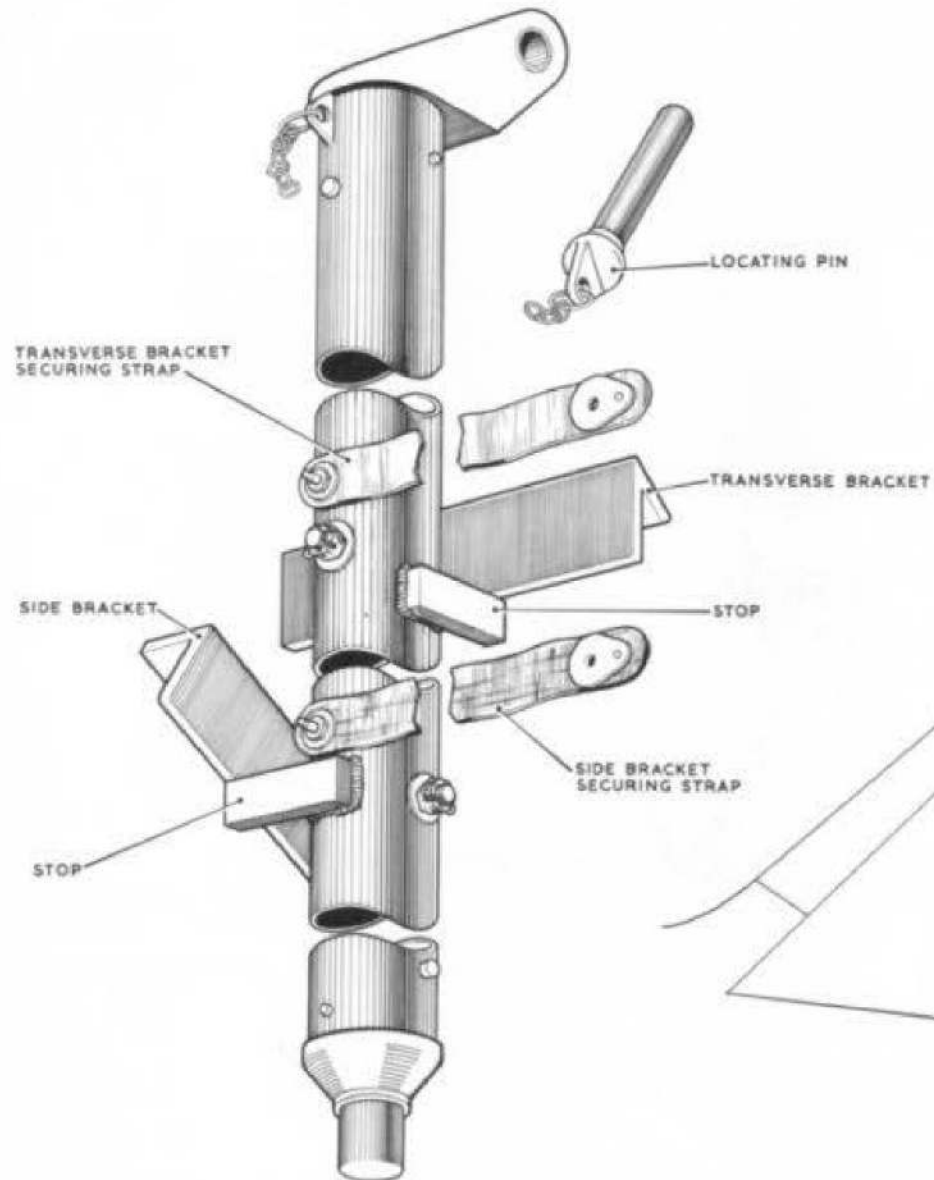


Fig. 5 Fin verticality jig  
**RESTRICTED**

TABLE 1  
LIST OF GROUND SERVICING EQUIPMENT

Ref.No.	Part No.	Description	Application
<b>SLINGING EQUIPMENT</b>			
26DC/95391	U1621	Sling	Lifting bleed air turbine and alternator - workshop use Removing bleed air turbine and/or alternator from aircraft
26DC/95445	U1693	Sling	
26DC/95452	U1727	Sling plate	
10S/17399	-	Lifting attachment	Radar head Type 12166
26DC/95374	U1613	Adapter head	
4GC/5703	42/1	Hoist 5 cwt.	
4GC/5736	42/50	Top sheath	
4GC/5743	41/77	Handle	
4GC/5429	41/76	Hook	
4GC/5433	41/136	Ball end	
4GC/5443	41/101	Tube extension 36 in.	
4GC/5446	41/110	Connecting sleeve	
4GC/5452	41/105	Tube extension 84 in.	
<b>COMPONENT HANDLING</b>			
26DC/95446	U1729	Trolley	Rear fuselage centre portion
-	U1850	Stand	Bleed air turbine and/or alternator
<b>MISCELLANEOUS SPECIAL EQUIPMENT</b>			
26DC/95425	U1655	Adapter	Condenser, cooling air intake
26DC/95457	U1757	Adapter	Pressure testing water/glycol system
26DC/95462	U1782	Adapter	Air intake turbo-alternator gearbox cooling; door open
26DC/95423	U1656	Adapter	Air intake turbo-alternator gearbox cooling; door close
-	U1851	Coupling adapter	Air hose to condenser
26DC/95453	U1728	Adapter coupling	Water/glycol system
26DC/95460	AVX2692	Coupling inlet	Charging and bleeding E.C.M. canisters
26DC/95600	AVX2849	Coupling outlet	
4G/5378	-	Can, fluid replenishing	
4G/5795	-	Adapter 1/2 in. B.S.P. male x 3/8 in. B.S.P. female	Charging water/glycol system
26DC/95458	AVA550C	Union half coupling	
4F/2584	-	Trolley air cooling Mk.3A	
4F/1840	-	Trolley ground heating Mk.3	

RESTRICTED

TABLE 1 - continued

Ref.No.	Part No.	Description	Application
5G/3198	-	Test set 200v, 400 c/s, 3 ph. a.c.	
10S/17400	-	Trolley radar servicing	Transporting radar head Type 12166
10S/17398	-	Mounting ring	
4F/1924	-	Trolley Type E	
4G/5641	-	Ladder Giraffe Type A.A.	Servicing and removal of radar head Type 12166
4G/5708	-	Jib	
4G/5707	-	Ladder extension	
4G/4272	-	Trolley nitrogen charging	E.C.M. canisters
6D/2184	-	Reducing valve	
10S/17041	-	Rigs, oil filling	
10S/	-	Platform, adapter, servicing	
-	U1663	Box, C/W compass swinging gear Comprising:-	
26DC/95422	U1653	Box, stowage, compass swinging gear	Use with 4G/5641 ladder
26DC/95238	U1527	Sighting rod, compass swinging, front	
26DC/95237	U1528	Sighting rod, compass swinging, rear	
-	U1651	Extension piece, sighting rod, front	
4G/5709	-	Adapter	
-	U1852	Platform servicing brake parachute	
<b>FLIGHT TOOL KIT</b>			
26DC/95415	Z9692	Key, special	Fuse holder screws Opening and closing parachute door
26DC/95465	Z9982	Tool, special	
<b>COVERS</b>			
27D/3216	Z10063	Condenser intake/exhaust	
27D/3215	Z10064	Air intake, tail warning	

This file was downloaded  
from the RTFM Library.

Link: [www.scottbouch.com/rtfm](http://www.scottbouch.com/rtfm)

Please see site for usage terms,  
and more aircraft documents.

