

Chapter 4 BOMBING EQUIPMENT

LIST OF CONTENTS

	<i>Para.</i>	DESCRIPTION
<i>Introduction</i>	1	<i>Air bomber's station</i> 3 <i>Bomb bay</i> 4

ILLUSTRATION

	<i>Fig.</i>
<i>Carrier attachment and crutch assembly points— bomb bay</i>	1

INTRODUCTION

1. The information in this chapter deals with the provisions made in this aircraft for the installation of the equipment required for various bomb loads. These consist of fixed fittings such as seating and crutching pads and attachment brackets for the ancillary equipment which is installed as required to suit any particular bomb installation. Components are provided at the crew positions for the control of the various electrical circuits, and information on the electrical fittings, controls and circuits involved will be found in Sect. 5, Chap. 1 of this Book.

2. Bombing up procedure, which includes the installation on the ancillary equipment, will be dealt with in A.P.2852B, Fig. 1 shows the location in the bomb bay of carrier attachment and crutch assembly points.

DESCRIPTION

AIR BOMBER'S STATION

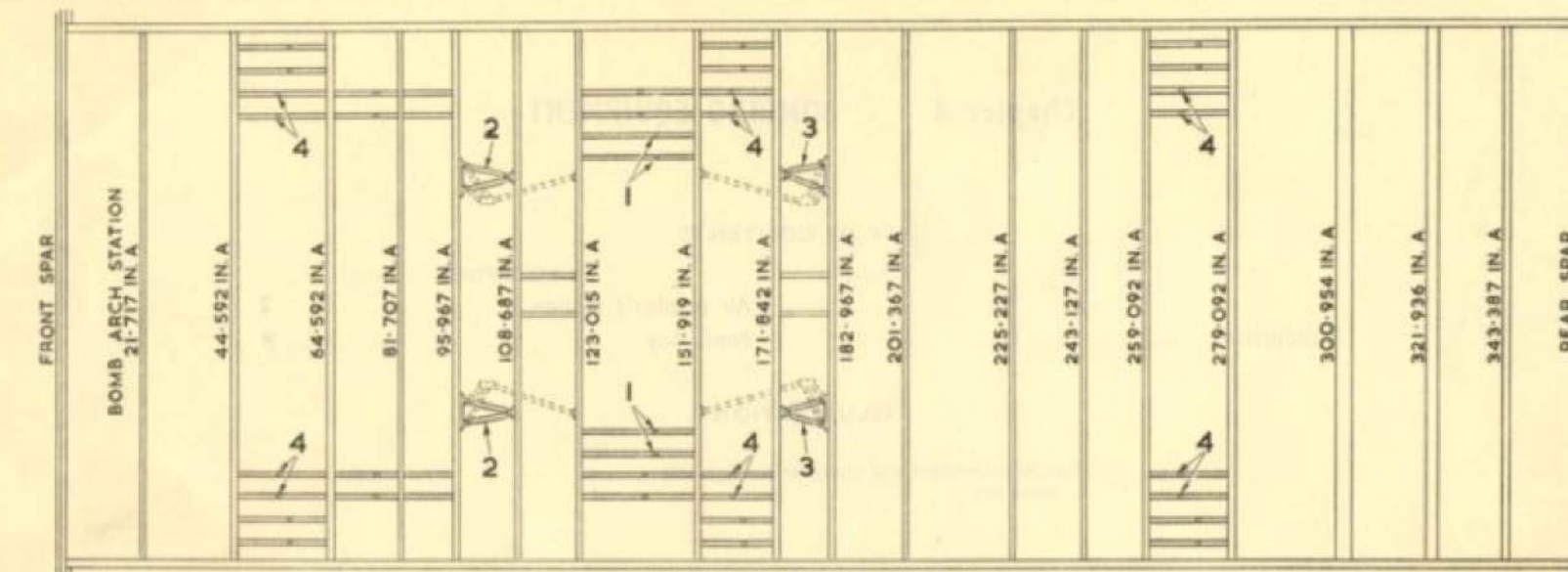
3. Provision is made for an air bomber lying in the prone position in a curved blister below the cabin of the aircraft. The air bomber's station is described and illustrated in Book 1, Sect. 1, Chap. 2 of this publication.

BOMB BAY

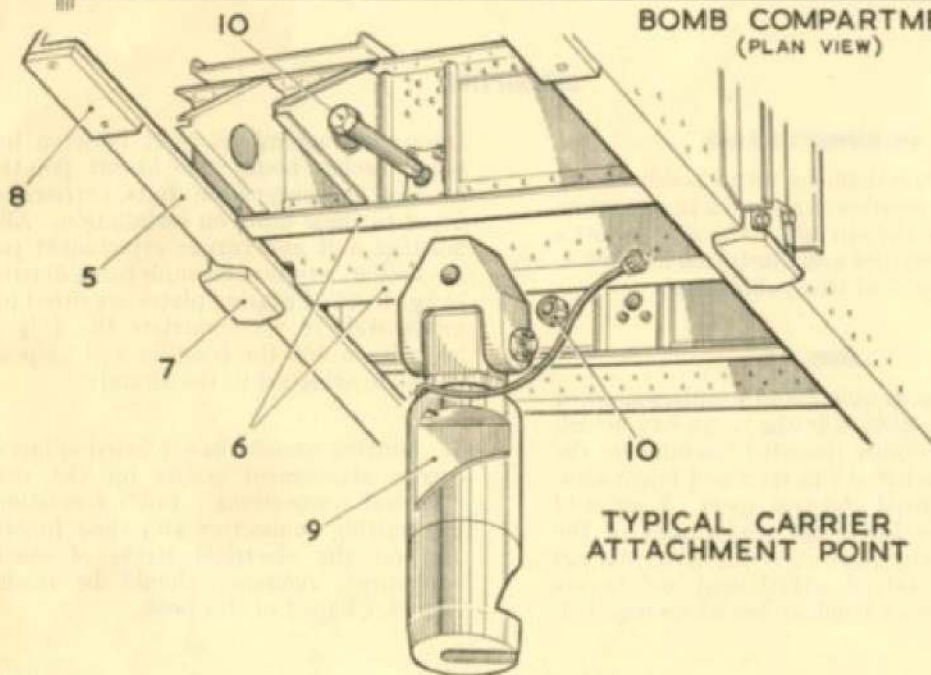
4. The various stores and ancillaries, when installed, are carried in the bomb bay, which occupies the space bounded laterally by the port and starboard ribs 63-5 and longitudinally by the front and rear spars. A series of bomb arches forms the major part of the bomb bay structure, and all fixed fittings other than carrier attachment points are located on heavy bomb arches where required.

Intercostal assemblies built between heavy bomb arches house attachment points for hoisting and suspension units, carriers being fitted to these units on installation. All the hoisting unit and carrier attachment points are similar, a typical example being illustrated in fig. 1. Steel bearing plates are fitted to the intercostals to accommodate the $\frac{1}{2}$ in. dia. bolts by which the hoisting and suspension units are attached to the aircraft.

5. Butting connectors are fitted adjacent to carrier attachment points for the various electrical connections. For information on the butting connectors and their functions, and on the electrical items of ancillary equipment, reference should be made to Sect. 5, Chap. 1 of this book.



**BOMB COMPARTMENT
(PLAN VIEW)**



KEY

- 1 ATTACHMENT POINTS FOR CARRIER A.V. 176
- 2 FORWARD CRUTCH ASSEMBLY FOR A.V. 176 INSTALLATION
- 3 AFT CRUTCH ASSEMBLY FOR A.V. 176 INSTALLATION
- 4 ATTACHMENT POINTS FOR CARRIERS A.V. 179
- 5 BOMB ARCH
- 6 INTERCOSTAL ASSEMBLY
- 7 CRUTCHING PAD
- 8 SEATING PAD
- 9 HOISTING AND SUSPENSION UNIT (FOR CARRIER ATTACHMENT)
- 10 SECURING BOLT FOR ITEM 9

Fig. 1. Carrier attachment and crutching positions

RESTRICTED



This file was downloaded
from the RTFM Library.

Link: www.scottbouch.com/rtfm

Please see site for usage terms,
and more aircraft documents.