

RESTRICTED
(FOR OFFICIAL USE ONLY)

AIR PUBLICATION 101B-1902-3A

BOOK 1

JUNE, 1960

1st EDITION

VULCAN B/K MK. 2 AIRCRAFT

**SCHEDULE OF
SPARE PARTS**

AIR MINISTRY

RESTRICTED

10 K35

RESTRICTED
(FOR OFFICIAL USE ONLY)

*Received from
Bitteswell 30/7/81*

AIR PUBLICATION 101B-1902-3A

BOOK 2

JUNE, 1960

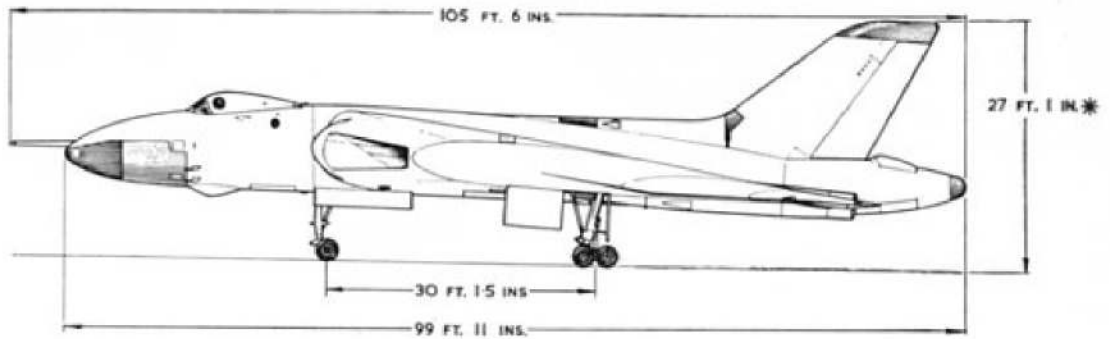
1st EDITION

VULCAN B/K MK. 2 AIRCRAFT

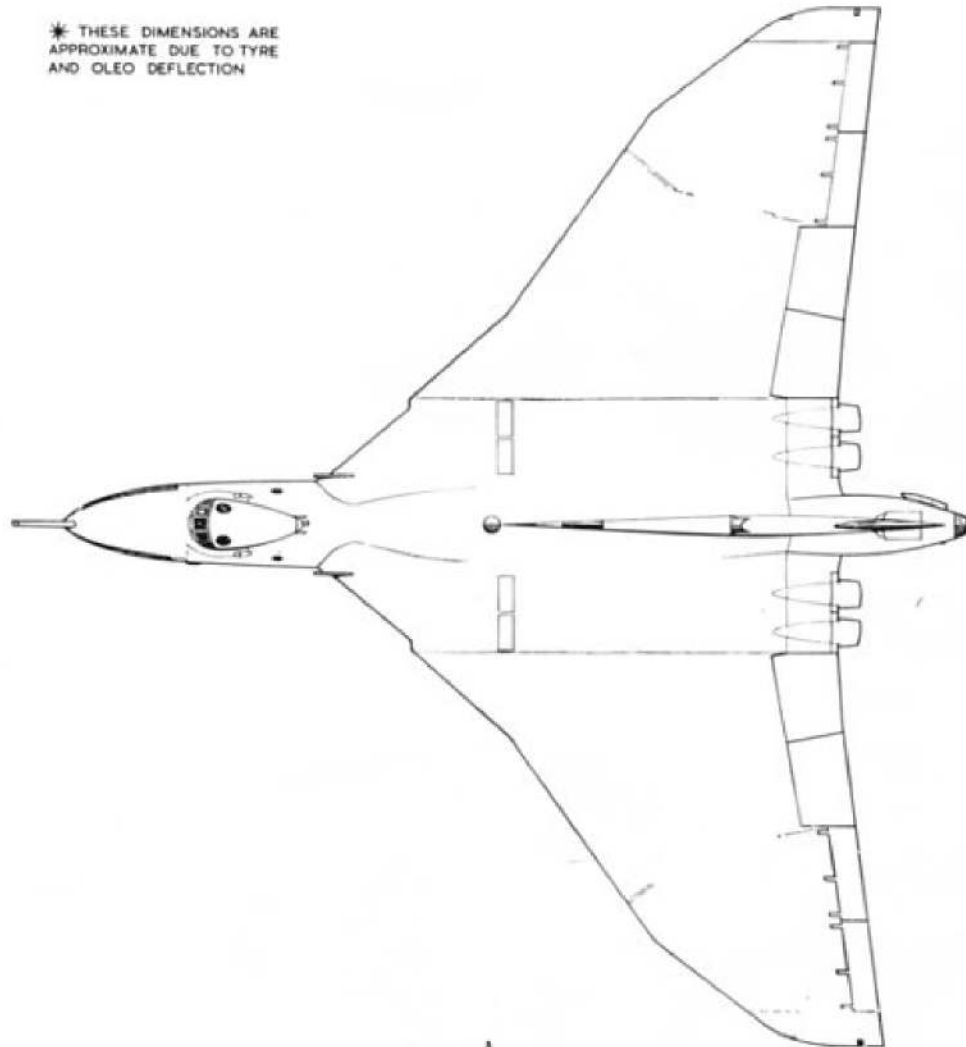
SCHEDULE OF
SPARE PARTS

AIR MINISTRY

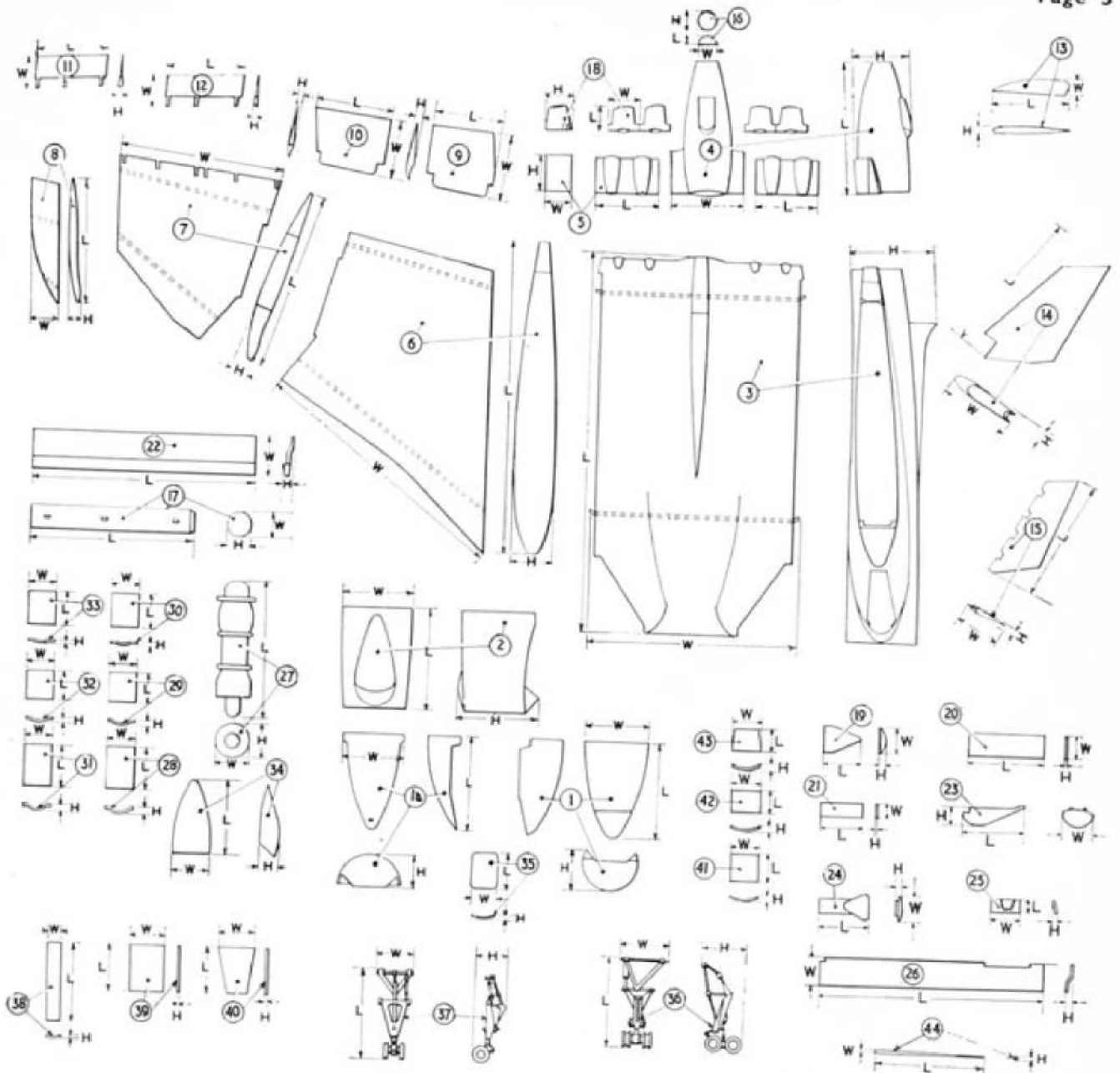
RESTRICTED



* THESE DIMENSIONS ARE APPROXIMATE DUE TO TYRE AND OLEO DEFLECTION



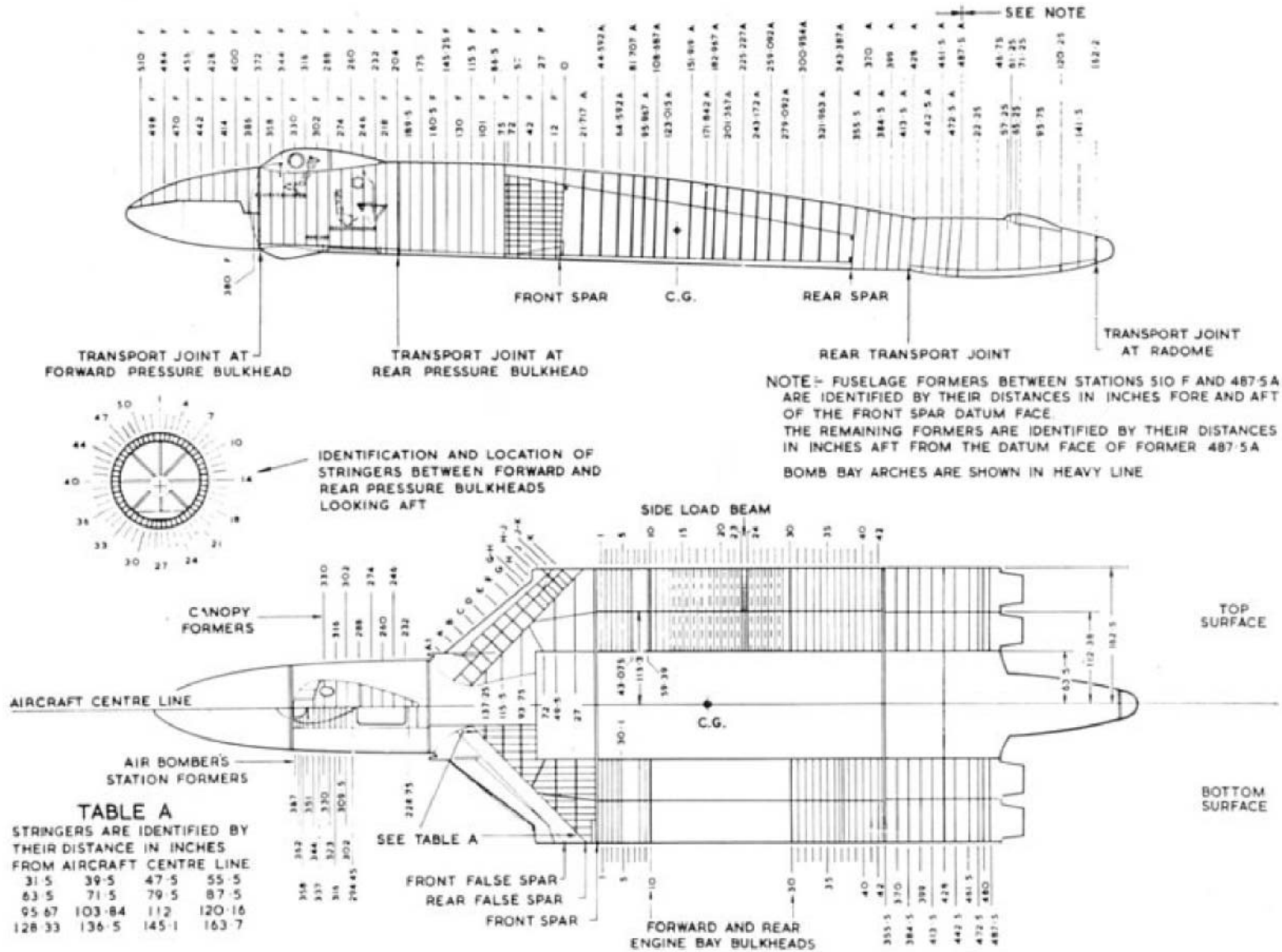
VULCAN B/K MK.2 GENERAL ARRANGEMENT



DIMENSIONS IN FT. L - LENGTH W - WIDTH H - HEIGHT

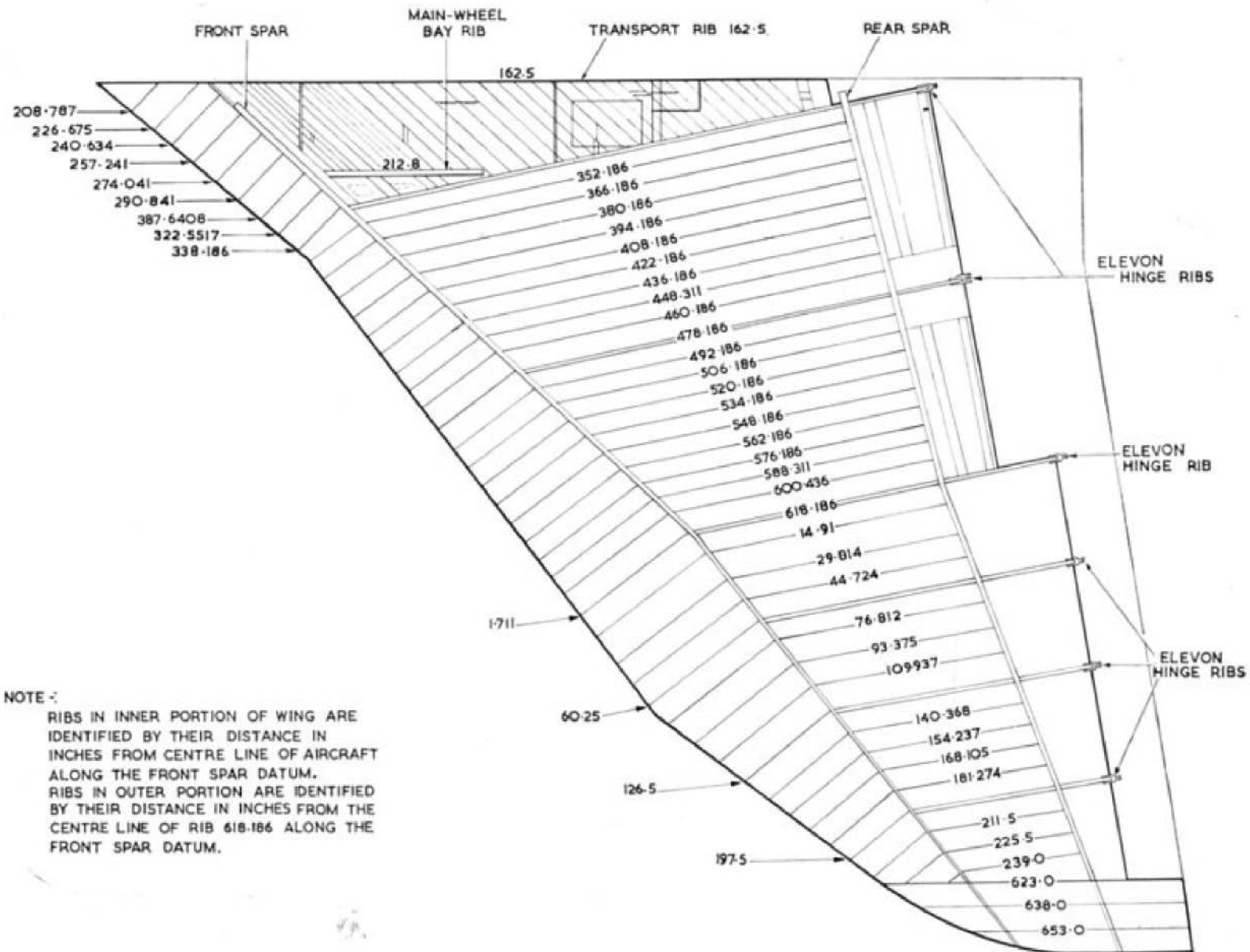
ITEM	COMPONENT	L	W	H	TARE WEIGHT lb.	ITEM	COMPONENT	L	W	H	TARE WEIGHT lb.
1	NOSE (lower portion, composite)	13.5	8.75	5.5	290	22	BOMB DAY DOORS (each)	29.25	5.2	0.66	712
1a	NOSE (upper portion, metal)	13.5	8.7	4.25	230	23	EXPENDABLE FAIRING	7.5	3.75	1.0	60
2	FRONT FUSELAGE	16.75	3.2	10.25	2,081	24	BOMB DAY FAIRING, REAR	6.33	3.25	1.0	23
3	CENTRE SECTION	52.85	28.85	12.0	17,979	25	BOMB DAY FAIRING, FRONT	6.0	7.0	0.75	4.8
4	REAR FUSELAGE	18.5	10.6	6.33	962	26	BOMB DAY FAIRING, PORT	29.0	4.75	1.5	444
5	REAR FUSELAGE FAIRING	9.25	5.0	3.33	258	27	BOMB DAY FAIRING, STBD.	29.0	5.75	1.6	520
6	WING, INNER (each)	50.0	35.5	5.0	6,457	28	ENGINE (Olympus 20101) (including oil and starter)	13.68	3.75	4.35	4,761
7	WING, OUTER (each)	24.5	20.5	2.5	1,708	29	ENGINE DOOR, FORWARD (in-board)	5.29	4.08	0.5	54
8	WING TIP (each)	14.8	3.75	0.79	107	30	ENGINE DOOR, CENTRE (board)	4.85	4.04	1.33	80
9	ELEVON INNER - inboard	9.75	10.6	1.66	326	31	ENGINE DOOR, REAR (Out-board)	5.83	4.79	1.25	68
10	ELEVON INNER - outboard	10.25	8.75	1.5	323	32	ENGINE DOOR, FORWARD (board)	5.29	4.08	0.5	52
11	ELEVON OUTER - inboard	9.75	4.25	1.6	210	33	ENGINE DOOR, CENTRE (board)	4.83	4.08	1.33	82
12	ELEVON OUTER - outboard	9.75	4.255	1.6	203	34	ENGINE DOOR, REAR (board)	5.83	4.79	1.25	73
13	FIN CAP	11.33	2.25	1.41	80	35	CANOPY	10.5	4.66	1.4	284
14	FIN	21.0	10.0	1.87	919	36	MAIN ENTRANCE DOOR	5.0	2.75	1.0	100
15	RUDDER	19.25	6.0	1.0	305	37	MAIN WHEEL UNIT (each)	12.75	5.0	6.0	2,485
16	TAIL RADOME	2.47	2.47	1.54	14	38	NOSE WHEEL UNIT	13.5	3.5	3.08	990
17	JET PIPE	22.98	2.63	2.63	492	39	NOSE WHEEL DOOR (each)	10.75	1.75	0.33	48
18	JET PIPE CAP	3.25	4.25	2.87	97	40	MAIN WHEEL DOOR	6.5	4.75	0.75	164
19	FAIRING (counterpoise plate, each)	4.0	3.58	0.5	17	41	MAIN WHEEL FAIRING	5.25	4.0	0.41	32
20	COUNTERPOISE PLATE, FRONT (each)	7.6	3.08	0.08	39	42	REAR FUSELAGE ACCESS DOOR (front)	4.27	4.04	0.79	27
20	COUNTERPOISE PLATE, REAR (each)	5.75	3.25	0.08	31	43	REAR FUSELAGE ACCESS DOOR (centre)	3.29	4.08	0.79	23
21	SPLITTER PLATE FRONT (each)	3.87	1.75	0.16	10	44	REAR FUSELAGE ACCESS DOOR (rear)	3.25	4.0	0.87	22
21	SPLITTER PLATE REAR (each)	5.75	2.54	0.16	23		REFUELLING PROBE	9.7	0.5	0.5	38

VULCAN B/K MK.2
MAJOR ASSEMBLIES DIMENSIONS AND WEIGHTS



VULCAN B/K MK.2 FUSELAGE

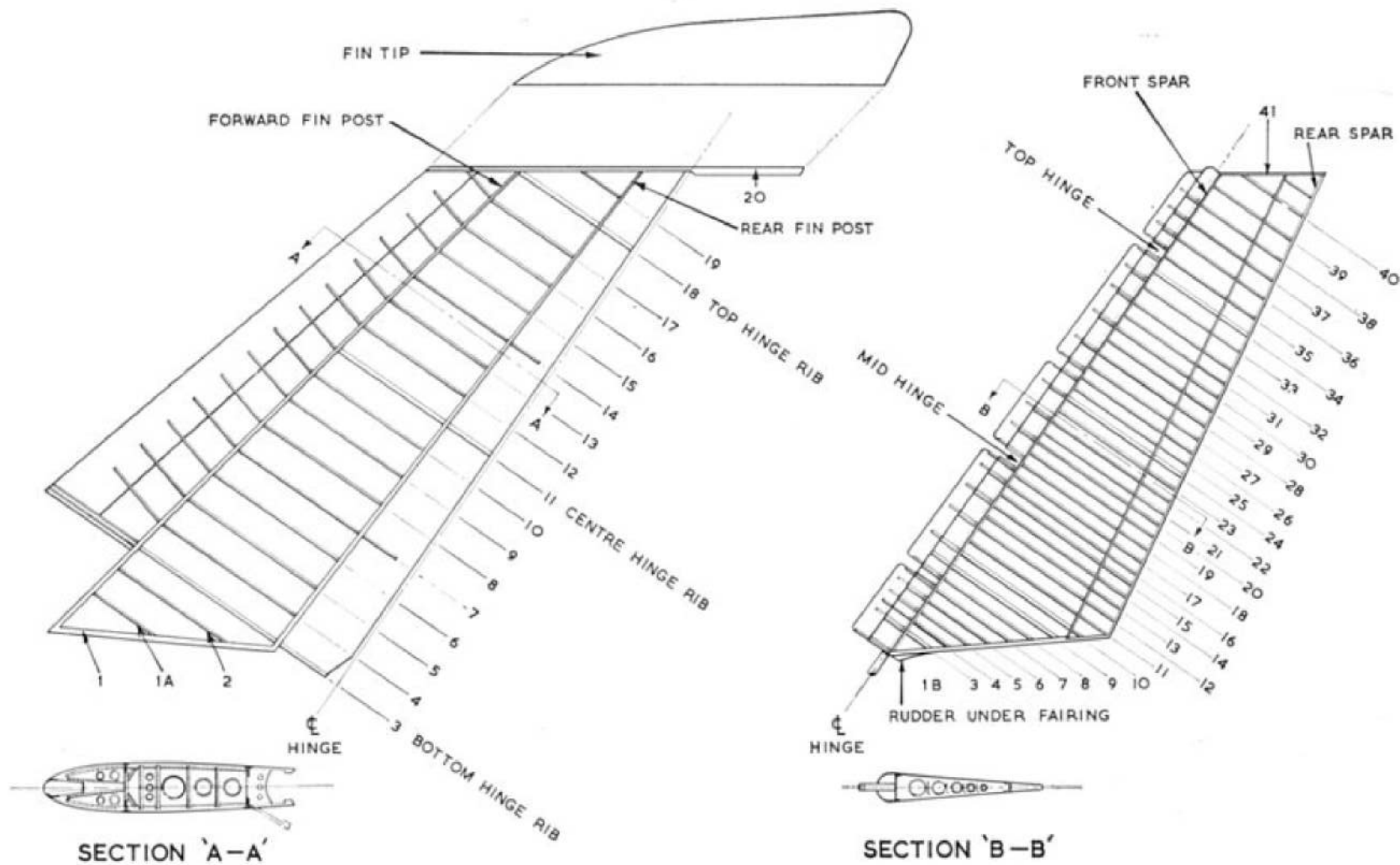
RESTRICTED



RESTRICTED

VULCAN B/K MK.2 MAIN PLANE

RESTRICTED



RESTRICTED

VULCAN B/K MK.2 FIN AND RUDDER

MEMORANDUM OF INSTRUCTIONS

- 1. CONTENTS** This Schedule contains a list of the Airframe Spare Parts embodied in A.P. 101B-1902 3A, which have been allocated Vocabulary Section 26DC.
- 2. DEMANDS** Units are to prepare their demands for spare parts strictly in accordance with A.P. 830, Vol. 1. Demands for the parts required to make an airframe serviceable are invariably to quote the Serial Number of the Aircraft. Units are to demand parts for this airframe under Vocabulary Section 26DC except where the schedule states otherwise. Where the schedule states that a part is held under another Vocabulary Section the demand should quote that section after reference to the appropriate publication.
- Unreferenced airframe items are not normally provisioned as spares. Demands for these items are to be submitted only when required to replace parts which have become unserviceable in use, to meet anticipated requirements where previous consumption has been recorded. Such demands are to quote Makers Part No.
- Parts qualified by the symbol "LM" are to be manufactured by consumer units. If it is found that manufacture is beyond the capacity of the unit and that the requirement cannot be economically met by fitting an assembly bearing a reference number then the Unit should demand the part required under its part number and endorse demand "Unable to manufacture Locally".
- When a Unit requires an unreferenced item which is beyond the Unit's capacity to manufacture or when a referenced part cannot be obtained consideration should be given to fitting the assembly of which this item is a part, if that assembly bears a reference number.
- Certain items are annotated "MR". These are normally provisioned for issue only to Units and Contractors authorised to undertake the major repair of VULCAN B/K MK. 2 airframes.
- 3. MODIFICATIONS (CLASSES 1 OR 2)** When an item is introduced by a modification the modification number is shown after the description of the item. Redundant items are deleted from the text.
- 4. MODIFICATIONS (CLASSES 3 AND 4) AND AMENDMENTS** When an item is introduced by this authority the No. is shown after the description. Parts rendered redundant are not to be deleted from the publication, but the description of these items must include the additional words "(PRE-MOD.)". New items added must include, in the description, the words "(MOD.)".
- 5. OBSOLESCENT STOCK** An asterisk (*) shown in the Part No. column of an item indicates that no further purchase of the item will be made but that stocks will be issued until they are exhausted.
- 6. NUMBERS OFF** The figure in the Number Off column indicates :—
- (a) The quantity required per airframe when the description is NOT indented.
- (b) The quantity required per assembly or sub assembly when the description IS indented.

MEMORANDUM OF INSTRUCTIONS

- 7. COMPILATION OF TEXT** The multi-indentation system has been used in which the main assemblies, sub-assemblies, groups and detail items indicate their relationship by the indentation of the descriptive titles. The indentation is in accordance with the following outline :—
- (a) The Main Assembly starts at the left hand margin and is printed in capital letters.
 - (b) First division :—
Sub-assemblies, groups or detail parts of the Main Assembly are indented one space.
 - (c) Second division :—
Groups or detail parts which are components of a Sub-assembly or group are each indented a further space.
 - (d) Third and subsequent divisions :—
In sequence.
- 8. MAIN ASSEMBLY DRAWINGS** Where for description or identification purposes only a Main Assembly drawing is shown, that drawing number is shown in brackets at the end of the description.
- 9. PIPE LINES, ELECTRICAL AND FLEXIBLE CABLES** Local manufacture of these items is intended wherever possible. Charts showing the various materials and parts required are included as appendices at the end of the schedule.
- 10. AMENDMENT LISTS** Amendments are to be correctly inserted and entered in the Amendment Certificate which is to be found in front of the schedule. Manuscript amendments are to be made in ink.
- Amendment Lists are numbered consecutively and will be issued at regular intervals. This schedule is to be checked with the statement of Amendment Lists issued, which is published periodically by A.M.O.s.
- 11. ASSOCIATED PUBLICATIONS** The following associated Schedules of Spare Parts for Airframe Accessory Equipment are to be used in conjunction with this schedule :—
- | | | | |
|--------------------|-----|-----|---|
| Dunlop Parts | ... | ... | A.P. 4515C, Vol. 3, Part 1, Sect. 2, Chap. 5. |
| Dowty Parts | ... | ... | A.P. 4515B, Vol. 3, Part 1, Sect. 2, Chap. 18 |
| Boulton Paul Parts | ... | ... | A.P. 4515Q, Vol. 3, Part 1, Chap. 2 |

MEMORANDUM OF INSTRUCTIONS**12. CLASSIFICATION
OF EQUIPMENT**

The letters denoting the Class of Store are defined as follows:—

CLASS "A"—Class "A" items are those items of equipment which remain on charge and cannot be replaced except on return to store. Repairable items which are beyond the capacity or authority of the unit to repair are to be returned to the appropriate Maintenance Unit categorised R/D.

CLASS "B"—Class "B" items are those items of equipment which remain on charge and cannot be replaced except on return to store. Items which are beyond the capacity of the unit to repair, or which for technical reasons are not capable of being repaired whatever the defect are to be disposed of locally by units.

CLASS "C"—Class "C" items are items of equipment other than Class "A" or "B" which are consumable in use, or are incapable of being economically repaired and are not of a nature which would necessitate detailed accounting as Class "A" or "B" equipment.

- R 13. Commencing at Amendment List No. 33 the Classification of this Catalogue will be changed from 'RESTRICTED' to 'UNCLASSIFIED'. Pages will only be amended to show the above change when they are affected by normal amendment action.

THE AMENDMENTS PROMULGATED IN THE UNDERMENTIONED AMENDMENT LISTS HAVE BEEN MADE IN THIS SCHEDULE

Amendment List		Amendments made by	Date
Number	Date		
1-6		INCORPORATED BY H. S. A. MANCHESTER.	
7	SEPT 65	E. H. Elliott	19-5-66.
8	AUG 66	E. H. Elliott	10-7-67.
9	AUG 67	E. H. Elliott	20-8-68.
10	Nov 67	E. H. Elliott	10-10-68.
11	MAR 68	E. H. Elliott	19-6-69
12	APRIL 68	E. H. Elliott	19-6-69.
13	APR-MARCH 69	Shore	} APRIL 70
14	APRIL 69	Shore	
15	APRIL 69	Shore	} MAY 70
16	JUNE 69	Shore	
17	AUGUST 69	Shore	
18			
19			
20	JAN. 71	Shore	11.10.71
21	MARCH 71	Shore	27.3.72.
22			
23	MAY 72	X S Bunn	29-11-72
24	SEPT 72	X S Bunn	5-3-73
25	NOV 72	X S Bunn	8-3-73
26	DEC 73	X S Bunn	11-3-74
27	JUNE 74	X S Bunn	6-8-74
28	JUNE 75	X S Bunn	10-10-75
29		Halley	29.3.76
30	JUNE 76	X S Bunn	7-7-76
31		X S Bunn	16-11-77
32		FOUND INCORPORATED REVISIONS.	10/3/81
33		Cape of Good Hope	11.3.81
34		E. K. Tallis	17.3.81.

**PERIODICAL INSPECTION OF SPARE PARTS
STORAGE CATEGORIES**

For details of different storage categories see A.P. 1086, Book 1, Second Edition, Memorandum of Instructions, Part 3.

A.P. 101B-1902-3A

Aircraft :

Aircraft : VULCAN B/K. MK. 2
Section : 26DC

NOTE :—Items which are shown in this Publication with an A.P. 1086 reference number are not included below. Details of categories and periodicity are stated in the relevant sub-section of A.P. 1086.

General Heading	Category	Periodicity of Inspection in *Temperate Climates	
		Packaged	Unpackaged

* For the method of calculating periodicity of inspection in tropical climates see A.P. 1086, Book 1, Second Edition Memorandum of Instructions, Part 3.

MODIFICATION AND AMENDMENT SHEET

Mod. No.	A.L. No.	Mod. No.	A.L. No.	Mod. No.	A.L. No.	Mod. No.	A.L. No.	Mod. No.	A.L. No.	Mod. No.	A.L. No.
1	†	53	N.A.	105	†	157	†	209	N.A.	261	†
2	†	54	†	106	†	158	†	210	†	262	†
3	C.	55	N.A.	107	N.A.	159	N.A.	211	†	263	†
4	C.	56	N.A.	108	N.A.	160	†	212	N.A.	264	†
5	C.	57	†	109	C.	161	C.	213	N.A.	265	N.A.
6	C.	58	†	110	†	162	N.A.	214	N.A.	266	†
7	C.	59	†	111	C.	163	C.	215	N.A.	267	C.
8	C.	60	†	112	†	164	†	216	N.A.	268	†
9	C.	61	N.A.	113	†	165	†	217	†	269	C.
10	†	62	†	114	†	166	N.A.	218	†	270	C.
11	†	63	†	115	N.A.	167	†	219	†	271	†
12	†	64	N.A.	116	†	168	†	220	N.A.	272	†
13	C.	65	†	117	N.A.	169	N.A.	221	N.A.	273	†
14	C.	66	†	118	C.	170	†	222	N.A.	274	†
15	C.	67	C.	119	C.	171	†	223	N.A.	275	†
16	C.	68	N.A.	120	N.A.	172	C.	224	N.A.	276	†
17	†	69	†	121	†	173	N.A.	225	N.A.	277	C.
18	C.	70	†	122	C.	174	N.A.	226	N.A.	278	N.A.
19	†	71	C.	123	†	175	N.A.	227	†	279	N.A.
20	N.A.	72	†	124	N.A.	176	†	228	N.A.	280	†
21	N.A.	73	†	125	†	177	†	229	N.A.	281	†
22	N.A.	74	C.	126	†	178	N.A.	230	N.A.	282	N.A.
23	N.A.	75	†	127	†	179	C.	231	N.A.	283	C.
24	†	76	N.A.	128	†	180	†	232	N.A.	284	†
25	†	77	C.	129	N.A.	181	†	233	N.A.	285	†
26	N.A.	78	†	130	†	182	†	234	†	286	N.A.
27	C.	79	†	131	†	183	†	235	†	287	N.A.
28	†	80	N.A.	132	†	184	†	236	C.	288	†
29	N.A.	81	†	133	N.A.	185	†	237	†	289	†
30	†	82	†	134	†	186	†	238	N.A.	290	N.A.
31	†	83	N.A.	135	†	187	†	239	N.A.	291	N.A.
32	†	84	N.A.	136	†	188	†	240	C.	292	N.A.
33	N.A.	85	N.A.	137	†	189	†	241	†	293	N.A.
34	†	86	N.A.	138	†	190	C.	242	†	294	N.A.
35	N.A.	87	N.A.	139	C.	191	C.	243	†	295	†
36	N.A.	88	N.A.	140	†	192	N.A.	244	†	296	N.A.
37	C.	89	†	141	C.	193	†	245	†	297	C.
38	†	90	†	142	N.A.	194	N.A.	246	N.A.	298	N.A.
39	†	91	†	143	†	195	N.A.	247	†	299	N.A.
40	†	92	†	144	†	196	N.A.	248	C.	300	N.A.
41	N.A.	93	†	145	†	197	†	249	N.A.	301	C.
42	N.A.	94	†	146	†	198	†	250	†	302	N.A.
43	†	95	†	147	†	199	†	251	†	303	†
44	N.A.	96	†	148	†	200	†	252	†	304	†
45	N.A.	97	†	149	†	201	†	253	C.	305	C.
46	N.A.	98	C.	150	†	202	†	254	†	306	C.
47	†	99	†	151	†	203	N.A.	255	N.A.	307	†
48	†	100	†	152	†	204	N.A.	256	†	308	†
49	†	101	N.A.	153	†	205	N.A.	257	†	309	N.A.
50	†	102	†	154	†	206	N.A.	258	†	310	†
51	†	103	N.A.	155	†	207	†	259	†	311	N.A.
52	N.A.	104	†	156	†	208	†	260	†	312	N.A.

† Incorporated in initial issue of Schedule.
 N.A. Modification/Amendment not applicable to this Schedule.
 C. Modification/Amendment cancelled.

MODIFICATION AND AMENDMENT SHEET

Mod. No.	A.L. No.	Mod. No.	A.L. No.	Mod. No.	A.L. No.	Mod. No.	A.L. No.	Mod. No.	A.L. No.	Mod. No.	A.L. No.
313	†	365	†	417	†	469	†	521	†	573	C.
314	N.A.	366	N.A.	418	N.A.	470	N.A.	522	N.A.	574	C.
315	N.A.	367	†	419	N.A.	471	N.A.	523	†	575	N.A.
316	†	368	†	420	N.A.	472	N.A.	524	†	576	N.A.
317	N.A.	369	N.A.	421	†	473	N.A.	525	†	577	†
318	†	370	†	422	N.A.	474	N.A.	526	†	578	†
319	N.A.	371	†	423	N.A.	475	N.A.	527	†	579	†
320	N.A.	372	N.A.	424	N.A.	476	†	528	†	580	C.
321	N.A.	373	†	425	†	477	†	529	N.A.	581	N.A.
322	†	374	N.A.	426	N.A.	478	†	530	†	582	†
323	N.A.	375	†	427	†	479	†	531	†	583	N.A.
324	N.A.	376	N.A.	428	N.A.	480	N.A.	532	N.A.	584	†
325	C.	377	N.A.	429	†	481	†	533	†	585	†
326	†	378	N.A.	430	N.A.	482	†	534	†	586	†
327	†	379	†	431	†	483	N.A.	535	†	587	N.A.
328	†	380	†	432	N.A.	484	†	536	†	588	N.A.
329	†	381	N.A.	433	N.A.	485	†	537	C.	589	†
330	N.A.	382	†	434	N.A.	486	†	538	†	590	N.A.
331	†	383	†	435	N.A.	487	N.A.	539	N.A.	591	†
332	†	384	N.A.	436	N.A.	488	†	540	N.A.	592	†
333	N.A.	385	N.A.	437	†	489	†	541	†	593	N.A.
334	†	386	N.A.	438	N.A.	490	N.A.	542	†	594	N.A.
335	N.A.	387	N.A.	439	†	491	†	543	C.	595	†
336	N.A.	388	†	440	N.A.	492	N.A.	544	N.A.	596	†
337	N.A.	389	†	441	N.A.	493	N.A.	545	†	597	†
338	N.A.	390	N.A.	442	N.A.	494	C.	546	†	598	C.
339	N.A.	391	N.A.	443	C.	495	†	547	†	599	†
340	N.A.	392	†	444	†	496	C.	548	†	600	†
341	†	393	N.A.	445	†	497	N.A.	549	†	601	N.A.
342	N.A.	394	†	446	†	498	N.A.	550	†	602	N.A.
343	N.A.	395	N.A.	447	†	499	N.A.	551	†	603	†
344	†	396	N.A.	448	N.A.	500	†	552	†	604	†
345	†	397	†	449	†	501	†	553	C.	605	†
346	N.A.	398	†	450	C.	502	†	554	†	606	N.A.
347	N.A.	399	†	451	†	503	†	555	†	607	N.A.
348	N.A.	400	†	452	†	504	†	556	†	608	†
349	†	401	†	453	N.A.	505	N.A.	557	N.A.	609	†
350	†	402	†	454	N.A.	506	†	558	†	610	†
351	N.A.	403	N.A.	455	C.	507	N.A.	559	N.A.	611	†
352	†	404	†	456	†	508	N.A.	560	†	612	†
353	N.A.	405	†	457	†	509	†	561	†	613	N.A.
354	†	406	N.A.	458	N.A.	510	N.A.	562	†	614	†
355	†	407	N.A.	459	†	511	†	563	†	615	N.A.
356	N.A.	408	N.A.	460	†	512	†	564	†	616	†
357	N.A.	409	†	461	†	513	†	565	†	617	†
358	†	410	N.A.	462	N.A.	514	†	566	†	618	N.A.
359	†	411	N.A.	463	C.	515	N.A.	567	C.	619	†
360	3	412	N.A.	464	†	516	†	568	N.A.	620	N.A.
361	†	413	N.A.	465	N.A.	517	†	569	†	621	N.A.
362	†	414	†	466	N.A.	518	†	570	N.A.	622	N.A.
363	†	415	†	467	N.A.	519	N.A.	571	†	623	N.A.
364	†	416	†	468	†	520	C.	572	N.A.	624	†

† Incorporated in initial issue of Schedule.
N.A. Modification/Amendment not applicable to this Schedule.
C. Modification/Amendment cancelled.

MODIFICATION AND AMENDMENT SHEET

Mod. No.	A.L. No.	Mod. No.	A.L. No.	Mod. No.	A.L. No.	Mod. No.	A.L. No.	Mod. No.	A.L. No.	Mod. No.	A.L. No.
625	†	677	N.A.	729	4	781	C.	833	†	885	1
626	†	678	†	730	3	782	C.	834	†	886	†
627	N.A.	679	†	731	1	783	C.	835	†	887	†
628	†	680	C.	732	1	784	C.	836	†	888	C.
629	N.A.	681	N.A.	733	3	785	1	837	N.A.	889	†
630	†	682	N.A.	734	3	786	C.	838	†	890	†
631	C.	683	N.A.	735	2	787	C.	839	†	891	2
632	N.A.	684	C.	736	3	788	C.	840	†	892	1
633	N.A.	685	C.	737	2	789	1	841	†	893	3
634	N.A.	686	N.A.	738	3	790	C.	842	6	894	3
635	†	687	†	739	N.A.	791	C.	843	†	895	8
636	†	688	†	740	N.A.	792	C.	844	N.A.	896	†
637	†	689	4	741	1	793	C.	845	N.A.	897	†
638	†	690	3	742	2	794	C.	846	†	898	†
639	3	691	†	743	3	795	C.	847	4	899	†
640	†	692	1	744	3	796	C.	848	†	900	4
641	N.A.	693	†	745	N.A.	797	C.	849	†	901	3
642	†	694	†	746	N.A.	798	†	850	N.A.	902	†
643	†	695	†	747	3	799	C.	851	†	903	N.A.
644	†	696	N.A.	748	2	800	†	852	C.	904	N.A.
645	†	697	N.A.	749	C.	801	†	853	4	905	8
646	†	698	3	750	C.	802	†	854	†	906	3
647	†	699	N.A.	751	N.A.	803	N.A.	855	2	907	C.
648	C.	700	N.A.	752	N.A.	804	C.	856	†	908	2
649	†	701	N.A.	753	4	805	3	857	N.A.	909	N.A.
650	†	702	3	754	N.A.	806	4	858	N.A.	910	C.
651	N.A.	703	N.A.	755	†	807	2	859	†	911	N.A.
652	N.A.	704	†	756	7	808	1	860	†	912	†
653	†	705	†	757	†	809	†	861	†	913	N.A.
654	C.	706	C.	758	N.A.	810	1	862	2	914	C.
655	†	707	2	759	C.	811	C.	863	3	915	3
656	†	708	2	760	†	812	†	864	N.A.	916	4
657	N.A.	709	†	761	4	813	N.A.	865	N.A.	917	†
658	1	710	N.A.	762	N.A.	814	N.A.	866	C.	918	C.
659	N.A.	711	†	763	7	815	N.A.	867	†	919	4
660	2	712	2	764	C.	816	N.A.	868	†	920	N.A.
661	†	713	†	765	†	817	N.A.	869	6	921	†
662	†	714	†	766	3	818	N.A.	870	†	922	†
663	†	715	3	767	†	819	3	871	N.A.	923	3
664	N.A.	716	N.A.	768	C.	820	N.A.	872	C.	924	4
665	C.	717	†	769	†	821	3	873	1	925	3
666	N.A.	718	N.A.	770	2	822	†	874	N.A.	926	†
667	†	719	N.A.	771	†	823	†	875	†	927	N.A.
668	3	720	†	772	2	824	N.A.	876	C.	928	N.A.
669	†	721	†	773	3	825	3	877	†	929	†
670	N.A.	722	N.A.	774	2	826	N.A.	878	†	930	N.A.
671	N.A.	723	N.A.	775	†	827	N.A.	879	†	931	2
672	3	724	†	776	†	828	N.A.	880	4	932	C.
673	†	725	†	777	N.A.	829	N.A.	881	†	933	C.
674	N.A.	726	†	778	3	830	†	882	†	934	1
675	N.A.	727	N.A.	779	N.A.	831	N.A.	883	†	935	N.A.
676	C.	728	4	780	N.A.	832	C.	884	†	936	N.A.

† Incorporated in initial issue of Schedule.
 N.A. Modification/Amendment not applicable to this Schedule.
 C. Modification/Amendment cancelled.

MODIFICATION AND AMENDMENT SHEET

Mod. No.	A.L. No.	Mod. No.	A.L. No.	Mod. No.	A.L. No.	Mod. No.	A.L. No.	Mod. No.	A.L. No.	Mod. No.	A.L. No.
937	7	989	N.A.	1041	2	1093	16	1145	N.A.	1197	3
938	†	990	C.	1042	N.A.	1094	C.	1146	N.A.	1198	7
939	†	991	†	1043	17	1095	8	1147	N.A.	1199	†
940	8	992	N.A.	1044	N.A.	1096	N.A.	1148	†	1200	8
941	†	993	3	1045	3	1097	8	1149	8	1201	N.A.
942	3	994	†	1046	†	1098	3	1150	†	1202	†
943	3	995	C.	1047	†	1099	N.A.	1151	19	1203	4
944	†	996	8	1048	2	1100	1	1152	N.A.	1204	10
945	N.A.	997	N.A.	1049	†	1101	N.A.	1153	6	1205	†
946	N.A.	998	N.A.	1050	15	1102	8	1154	4	1206	†
947	N.A.	999	C.	1051	15	1103	2	1155	17	1207	15
948	C.	1000	2	1052	†	1104	†	1156	8	1208	N.A.
949	6	1001	N.A.	1053	N.A.	1105	†	1157	7	1209	†
950	3	1002	13	1054	†	1106	3	1158	15	1210	†
951	N.A.	1003	2	1055	†	1107	†	1159	19	1211	N.A.
952	2	1004	†	1056	N.A.	1108	8	1160	1	1212	5
953	†	1005	N.A.	1057	15	1109		1161	C.	1213	5
954	†	1006	N.A.	1058	3	1110	†	1162	17	1214	11
955	†	1007	N.A.	1059	†	1111	N.A.	1163	†	1215	5
956	2	1008	†	1060	†	1112	C.	1164	16	1216	16
957	N.A.	1009	C.	1061	†	1113	C.	1165	4	1217	16
958	N.A.	1010	2	1062	†	1114	2	1166	16	1218	4
959	N.A.	1011	3	1063	N.A.	1115	C.	1167	†	1219	3
960	C.	1012	N.A.	1064	4	1116	N.A.	1168	17	1220	8
961	†	1013	N.A.	1065	N.A.	1117	†	1169	17	1221	3
962	†	1014	N.A.	1066	N.A.	1118	N.A.	1170	†	1222	3
963	†	1015	†	1067	C.	1119	†	1171	†	1223	13
964	†	1016	N.A.	1068	2	1120	N.A.	1172	†	1224	5
965	†	1017	5	1069	C.	1121	8	1173	C.	1225	16
966	†	1018	7	1070	N.A.	1122	N.A.	1174	2	1226	5
967	8	1019	4	1071	4	1123	N.A.	1175	2	1227	†
968	†	1020	N.A.	1072	3	1124	N.A.	1176	†	1228	N.A.
969	3	1021	†	1073	1	1125	C.	1177	4	1229	C.
970	†	1022	3	1074	2	1126	†	1178	C.	1230	†
971	†	1023	N.A.	1075	8	1127	†	1179	C.	1231	†
972	3	1024	N.A.	1076	2	1128	3	1180	†	1232	3
973	7	1025	N.A.	1077	5	1129	†	1181	†	1233	3
974	2	1026	N.A.	1078	3	1130	†	1182	C.	1234	†
975	2	1027	C.	1079	†	1131	16	1183	†	1235	†
976	†	1028	†	1080	5	1132	†	1184	N.A.	1236	N.A.
977	†	1029	N.A.	1081	13	1133	8	1185	†	1237	15
978	N.A.	1030	N.A.	1082	5	1134	N.A.	1186	N.A.	1238	†
979	N.A.	1031	†	1083	5	1135	2	1187	†	1239	†
980	1	1032	†	1084	13	1136	3	1188	†	1240	N.A.
981	5	1033	8	1085	5	1137	4	1189	N.A.	1241	15
982	N.A.	1034		1086	5	1138	N.A.	1190	†	1242	15
983	2	1035	C.	1087	5	1139	2	1191	N.A.	1243	N.A.
984	†	1036	N.A.	1088	5	1140	C.	1192	C.	1244	11
985	4	1037	C.	1089	†	1141	C.	1193	†	1245	3
986	†	1038	4	1090	†	1142	7	1194	15	1246	N.A.
987	N.A.	1039	5	1091	N.A.	1143	†	1195	15	1247	16
988	N.A.	1040	C.	1092	2	1144	†	1196	N.A.	1248	15

† Incorporated in initial issue of Schedule.
 N.A. Modification/Amendment not applicable to this Schedule.
 C. Modification/Amendment cancelled.

VULCAN Mk. 2

Page 25

MODIFICATION AND AMENDMENT SHEET

Mod. No.	A.L. No.	Mod. No.	A.L. No.	Mod. No.	A.L. No.	Mod. No.	A.L. No.	Mod. No.	A.L. No.	Mod. No.	A.L. No.
1249	N.A.	1301	†	1353	5	1405	†	1457	N.A.	1509	2
1250	4	1302	13	1354	5	1406	4	1458	8	1510	†
1251	1	1303	5	1355	N.A.	1407	3	1459	†	1511	†
1252	N.A.	1304	5	1356	10	1408	16	1460	N.A.	1512	†
1253	N.A.	1305	C.	1357	6	1409	†	1461	†	1513	9
1254	†	1306	15	1358	3	1410	N.A.	1462	15	1514	†
1255	N.A.	1307	5	1359	N.A.	1411	†	1463	17	1515	†
1256	†	1308	C.	1360	C.	1412	15	1464	15	1516	†
1257	C.	1309	†	1361	16	1413	C.	1465	N.A.	1517	†
1258	†	1310	†	1362	C.	1414	15	1466	13	1518	N.A.
1259	6	1311	1	1363	2	1415	C.	1467	C.	1519	C.
1260	†	1312	N.A.	1364	17	1416	N.A.	1468	N.A.	1520	C.
1261	C.	1313	†	1365	15	1417	3	1469	3	1521	C.
1262	4	1314	N.A.	1366	6	1418	8	1470	†	1522	C.
1263	4	1315	9	1367	†	1419	†	1471	C.	1523	C.
1264	C.	1316	†	1368	†	1420	5	1472	C.	1524	C.
1265	C.	1317	†	1369	C.	1421	N.A.	1473	16	1525	C.
1266	N.A.	1318	C.	1370	13	1422	6	1474	13	1526	C.
1267	C.	1319	5	1371	16	1423	†	1475	16	1527	C.
1268	†	1320	2	1372	N.A.	1424	3	1476	N.A.	1528	C.
1269	†	1321	13	1373	†	1425	†	1477	†	1529	C.
1270	6	1322	C.	1374	11	1426	N.A.	1478	4	1530	C.
1271	3	1323	†	1375	5	1427	2	1479	N.A.	1531	†
1272	†	1324	16	1376	5	1428	4	1480	N.A.	1532	N.A.
1273	†	1325	8	1377	N.A.	1429	N.A.	1481	4	1533	†
1274	†	1326	†	1378	2	1430	2	1482	4	1534	†
1275	†	1327	C.	1379	C.	1431	7	1483	7	1535	†
1276	†	1328	†	1380	†	1432	16	1484	4	1536	13
1277	4	1329	C.	1381	N.A.	1433	3	1485	†	1537	17
1278	N.A.	1330	C.	1382	4	1434	3	1486	16	1538	C.
1279	†	1331	C.	1383	10	1435	†	1487	C.	1539	C.
1280	1	1332	3	1384	8	1436	N.A.	1488	†	1540	16
1281	1	1333	C.	1385	†	1437	†	1489	†	1541	C.
1282	†	1334	†	1386	†	1438	N.A.	1490	C.	1542	N.A.
1283	7	1335	17	1387	15	1439	4	1491	8	1543	7
1284	3	1336	16	1388	3	1440	N.A.	1492	5	1544	10
1285	†	1337	†	1389	N.A.	1441	7	1493	†	1545	9
1286	†	1338	†	1390	N.A.	1442	†	1494	N.A.	1546	C.
1287	†	1339	C.	1391	C.	1443	†	1495	N.A.	1547	C.
1288	6	1340	2	1392	8	1444	†	1496	C.	1548	N.A.
1289	8	1341	†	1393	4	1445	†	1497	5	1549	N.A.
1290	17	1342	7	1394	†	1446	4	1498	N.A.	1550	†
1291	8	1343	C.	1395	C.	1447	†	1499	2	1551	3
1292	†	1344	N.A.	1396	C.	1448	7	1500	†	1552	2
1293	13	1345	†	1397	C.	1449	†	1501	†	1553	3
1294	†	1346	4	1398	C.	1450	N.A.	1502	C.	1554	C.
1295	C.	1347	†	1399	6	1451	3	1503	†	1555	N.A.
1296	19	1348	8	1400	C.	1452	16	1504	2	1556	†
1297	3	1349	†	1401	N.A.	1453	†	1505	3	1557	3
1298	C.	1350	†	1402	N.A.	1454	N.A.	1506	†	1558	†
1299	C.	1351	5	1403	N.A.	1455	C.	1507	†	1559	C.
1300	11	1352	C.	1404	8	1456	13	1508	2	1560	6

† Incorporated in initial issue of Schedule.
 N.A. Modification/Amendment not applicable to this Schedule.
 C. Modification/Amendment cancelled.

MODIFICATION AND AMENDMENT SHEET

Mod. No.	A.L. No.	Mod. No.	A.L. No.	Mod. No.	A.L. No.	Mod. No.	A.L. No.	Mod. No.	A.L. No.	Mod. No.	A.L. No.
1561	C.	1613	C.	1665	11	1717	†	1769	†	1821	15
1562	5	1614	C.	1666	11	1718	†	1770	C.	1822	C.
1563	†	1615	3	1667	C.	1719	†	1771	10	1823	13
1564	C.	1616	N.A.	1668	C.	1720	†	1772	C.	1824	C.
1565	†	1617	17	1669	†	1721	†	1773	C.	1825	C.
1566	N.A.	1618	C.	1670	†	1722	15	1774	N.A.	1826	C.
1567	C.	1619	11	1671	13	1723	13	1775	N.A.	1827	†
1568	†	1620	N.A.	1672	C.	1724	13	1776	N.A.	1828	C.
1569	†	1621	4	1673	C.	1725	11	1777	19	1829	†
1570	C.	1622	†	1674	C.	1726	†	1778	†	1830	†
1571	†	1623	16	1675	C.	1727	†	1779	17	1831	16
1572	16	1624	†	1676	C.	1728	13	1780	11	1832	13
1573	C.	1625	C.	1677	C.	1729	10	1781	11	1833	21
1574	N.A.	1626	5	1678	13	1730	16	1782	†	1834	C.
1575	C.	1627	†	1679	C.	1731	C.	1783	C.	1835	C.
1576	N.A.	1628	†	1680	N.A.	1732	C.	1784	C.	1836	8
1577	N.A.	1629	†	1681	†	1733	†	1785	C.	1837	†
1578	C.	1630	N.A.	1682	8	1734	†	1786	C.	1838	†
1579	16	1631	19	1683	C.	1735	C.	1787	†	1839	19
1580	2	1632	†	1684	C.	1736	C.	1788	C.	1840	N.A.
1581	11	1633	5	1685	C.	1737	8	1789	11	1841	15
1582	C.	1634	C.	1686	C.	1738	13	1790	13	1842	16
1583	15	1635	N.A.	1687	4	1739	13	1791	8	1843	11
1584	C.	1636	N.A.	1688	C.	1740	13	1792	†	1844	13
1585	13	1637	C.	1689	C.	1741	†	1793	†	1845	†
1586	19	1638	N.A.	1690	C.	1742	†	1794	C.	1846	13
1587	16	1639	9	1691	10	1743	C.	1795	†	1847	†
1588	†	1640	16	1692	14	1744	10	1796	10	1848	13
1589	13	1641	C.	1693	14	1745	15	1797	N.A.	1849	C.
1590	†	1642	†	1694	14	1746	C.	1798	N.A.	1850	C.
1591	C.	1643	13	1695	†	1747	N.A.	1799	N.A.	1851	13
1592	13	1644	17	1696	19	1748	N.A.	1800	10	1852	C.
1593	†	1645	C.	1697	19	1749	N.A.	1801	19	1853	N.A.
1594	C.	1646	C.	1698	11	1750	†	1802	N.A.	1854	†
1595	C.	1647	C.	1699	13	1751	C.	1803	†	1855	C.
1596	N.A.	1648	N.A.	1700	N.A.	1752	C.	1804	16	1856	10
1597	N.A.	1649	16	1701	N.A.	1753	†	1805	10	1857	15
1598	N.A.	1650	C.	1702	†	1754	†	1806	10	1858	†
1599	N.A.	1651	C.	1703	C.	1755	C.	1807	N.A.	1859	C.
1600	†	1652	C.	1704	15	1756	15	1808	15	1860	†
1601	†	1653	C.	1705	C.	1757	C.	1809	C.	1861	C.
1602	†	1654	C.	1706	N.A.	1758	C.	1810	†	1862	C.
1603	5	1655	C.	1707	†	1759	C.	1811	C.	1863	N.A.
1604	C.	1656	C.	1708	C.	1760	†	1812	C.	1864	3
1605	C.	1657	15	1709	16	1761	C.	1813	C.	1865	18
1606	C.	1658	C.	1710	11	1762	N.A.	1814	16	1866	C.
1607	C.	1659	13	1711	†	1763	†	1815	N.A.	1867	11
1608	†	1660	C.	1712	13	1764	†	1816	13	1868	8
1609	†	1661	C.	1713	11	1765	†	1817	†	1869	†
1610	6	1662	C.	1714	13	1766	†	1818	C.	1870	C.
1611	†	1663	†	1715	†	1767	†	1819	C.	1871	C.
1612	†	1664	C.	1716	11	1768	16	1820	C.	1872	13

† Incorporated in initial issue of Schedule.
N.A. Modification/Amendment not applicable to this Schedule.
C. Modification/Amendment cancelled.

MODIFICATION AND AMENDMENT SHEET

Mod. No.	A.L. No.	Mod. No.	A.L. No.	Mod. No.	A.L. No.	Mod. No.	A.L. No.	Mod. No.	A.L. No.	Mod. No.	A.L. No.
1837	C.	1925	N.A.	1977	11	2029	N.A.	2081	13	2123	C.
1874	C.	1926	13	1978	11	2030	C.	2082	20	2134	C.
1875	C.	1927	N.A.	1979	†	2031	C.	2083	†	2135	19
1876	†	1928	15	1980	15	2032	16	2084	9	2136	C.
1877	7	1929	†	1981	8	2033	20	2085	N.A.	2137	13
1873	19	1930	C.	1982	8	2034	17	2086	10	2138	21
1879	†	1931	N.A.	1983	20	2035	16	2087	13	2139	19
1880	16	1932	N.A.	1984	C.	2036	C.	2088	13	2140	16
1881	13	1933	16	1985	C.	2037	13	2089	13	2141	C.
1882	N.A.	1934	†	1986	C.	2038	C.	2090	N.A.	2142	16
1883	C.	1935	15	1987	†	2039	N.A.	2091	17	2143	17
1884	N.A.	1936	21	1988	†	2040	N.A.	2092	19	2144	17
1885	†	1937	C.	1989	C.	2041	N.A.	2093	C.	2145	17
1886	C.	1938	13	1990	C.	2042	C.	2094	13	2146	†
1887	8	1939	13	1991	C.	2043	†	2095	C.	2147	19
1888	11	1940	16	1992	C.	2044	N.A.	2096	19	2148	†
1889	†	1941	C.	1993	†	2045	15	2097	13	2149	10
1890	†	1942	15	1994	C.	2046	C.	2098	C.	2150	10
1891	10	1943	7	1995	C.	2047	13	2099	10	2151	15
1892	15	1944	13	1996	15	2048	C.	2100	13	2152	11
1893	C.	1945	N.A.	1997	C.	2049	21	2101	N.A.	2153	C.
1894	11	1946	†	1998	N.A.	2050	16	2102	13	2154	21
1895	C.	1947	N.A.	1999	C.	2051	C.	2103	C.	2155	25
1896	13	1948	C.	2000	21	2052	16	2104	C.	2156	20
1897	13	1949	C.	2001	C.	2053	13	2105	17	2157	20
1898	9	1950	C.	2002	C.	2054	15	2106	C.	2158	C.
1899	N.A.	1951	C.	2003	N.A.	2055	11	2107	13	2159	C.
1900	15	1952	†	2004	C.	2056	13	2108	13	2160	19
1901	†	1953	C.	2005	10	2057	21	2109	9	2161	C.
1902	9	1954	C.	2006	N.A.	2058	†	2110	19	2162	C.
1903	C.	1955	C.	2007	15	2059	13	2111	13	2163	16
1904	†	1956	C.	2008	20	2060	16	2112	N.A.	2164	10
1905	†	1957	†	2009	11	2061	13	2113	7	2165	17
1906	16	1958	7	2010	†	2062	†	2114	C.	2166	N.A.
1907	17	1959	†	2011	10	2063	15	2115	C.	2167	24
1908	†	1960	13	2012	10	2064	13	2116	21	2168	17
1909	†	1961	19	2013	7	2065	13	2117	17	2169	N.A.
1910	8	1962	11	2014	13	2066	C.	2118	16	2170	20
1911	C.	1963	16	2015	20	2067	16	2119	10	2171	15
1912	N.A.	1964	†	2016	20	2068	C.	2120	13	2172	21
1913	†	1965	N.A.	2017	17	2069	13	2121	17	2173	17
1914	13	1966	†	2018	C.	2070	C.	2122	17	2174	22
1915	†	1967	8	2019	C.	2071	C.	2123	17	2175	16
1916	†	1968	19	2020	7	2072	20	2124	†	2176	C.
1917	†	1969	11	2021	13	2073	13	2125	17	2177	17
1918	N.A.	1970	13	2022	C.	2074	15	2126	9	2178	22
1919	†	1971	13	2023	19	2075	11	2127	15	2179	N.A.
1920	C.	1972	†	2024	22	2076	10	2128	N.A.	2180	15
1921	†	1973	N.A.	2025	8	2077	11	2129	16	2181	21
1922	16	1974	N.A.	2026	N.A.	2078	13	2130	13	2182	20
1923	C.	1975	10	2027	C.	2079	10	2131	9	2183	21
1924	†	1976	16	2028	†	2080	15	2132	20	2184	22

† Incorporated in initial issue of Schedule.
N.A. Modification/Amendment not applicable to this Schedule.
C. Modification/Amendment cancelled.

MODIFICATION AND AMENDMENT SHEET

Mod. No.	A.L. No.	Mod. No.	A.L. No.	Mod. No.	A.L. No.	Mod. No.	A.L. No.	Mod. No.	A.L. No.	Mod. No.	A.L. No.
2185	21	2237	C.	2289	25	2341	N.A.	2393	32	2445	
2186	15	2238	C.	2290	24	2342	C.	2934	C.	2246	
2187	N.A.	2239	19	2291	N.A.	2343	C.	2395	29	2447	32
2188	17	2240	25	2292	30	2344	C.	2396	30	2448	33
2189	21	2241	C.	2293	N.A.	2345	C.	2397	30	2449	33
2190	21	2242	21	2294	25	2346	C.	2398	32	2450	C.
2191	15	2243	21	2295	25	2347		2399	N.A.	2451	33
2192	C.	2244	21	2296	N.A.	2348	25	2400	30	2452	33
2193	22	2245	21	2297	21	2349	26	2401	29	2453	34
2194	N.A.	2246	21	2298	N.A.	2350	32	2402	28	2454	33
2195	20	2247	C.	2299	25	2351		2403	N.A.	2455	
2196	†	2248	21	2300	25	2352	30	2404	N.A.	2456	33
2197	21	2249	C.	2301	21	2353	C.	2405	N.A.	2457	33
2198	21	2250	21	2302	25	2354	C.	2406	30	2458	33
2199	22	2251		2303	24	2355	27	2407	C.	2459	33
2200	21	2252	C.	2304	28	2356	26	2408	C.	2460	C.
2201	20	2253	22	2305	25	2357	26	2409	N.A.	2461	N.A.
2202	21	2254	21	2306	25	2358	N.A.	2410	30	2462	C.
2203	21	2255	25	2307	21	2359	C.	2411	32	2463	
2204	C.	2256	25	2308	26	2360	26	2412	31	2464	
2205	N.A.	2257	25	2309	24	2361	N.A.	2413		2465	N.A.
2206	20	2258	25	2310	25	2362	28	2414	C.	2466	N.A.
2207	21	2259	N.A.	2311	25	2363	29	2415		2467	35
2208	C.	2260	N.A.	2312	C.	2364	C.	2416	31	2468	34
2209	C.	2261	25	2313	24	2365	27	2417	N.A.	2469	C.
2210	N.A.	2262	†	2314	25	2366		2418	34	2470	
2211	22	2263	21	2315	25	2367	32	2419		2471	
2212	N.A.	2264	21	2316	25	2368	28	2420	31	2472	
2213	21	2265	27	2317	24	2369	30	2421		2473	
2214	N.A.	2266	N.A.	2318	27	2370	29	2422	31	2474	
2215	C.	2267	21	2319	24	2371	27	2423		2475	35
2216	C.	2268	C.	2320	24	2372	28	2424	C.	2476	35
2217	C.	2269	25	2321	25	2373	28	2425	C.	2477	33
2218	25	2270	21	2322	C.	2374	30	2426	C.	2478	
2219	21	2271	25	2323	25	2375	30	2427	32	2479	35
2220	21	2272	26	2324	C.	2376	N.A.	2428	32	2480	N.A.
2221	22	2273	21	2325	C.	2377	N.A.	2429		2481	34
2222	N.A.	2274	C.	2326	24	2378	30	2430		2482	
2223	22	2275	25	2327	N.A.	2379	C.	2431	32	2483	
2224	21	2276	C.	2328	C.	2380	N.A.	2432	31	2484	33
2225	N.A.	2277	N.A.	2329	25	2381	N.A.	2433	32	2485	
2226	21	2278	21	2330	25	2382	N.A.	2434	32	2486	N.A.
2227	20	2279	N.A.	2331	25	2383	C.	2435		2487	
2228	21	2280	25	2332	C.	2384	28	2436	32	2488	35
2229	N.A.	2281	22	2333	25	2385	29	2437	32	2489	
2230	N.A.	2282	21	2334	C.	2386	28	2438	32	2490	
2231	N.A.	2283	25	2335	25	2387	C.	2439	33	2491	35
2232	19	2284	25	2336	25	2388	32	2440		2492	
2233	21	2285	25	2337	25	2389	N.A.	2441	35	2493	
2234	N.A.	2286	N.A.	2338	25	2390	31	2442	32	2494	
2235	C.	2287	22	2339	C.	2391	29	2443	N.A.	2495	
2236	24	2288	N.A.	2340	25	2392	34	2444	35	2496	

† Incorporated in initial issue of Schedule
 N.A. Modification/Amendment not applicable to this Schedule.
 C. Modification/Amendment cancelled.

MODIFICATION AND AMENDMENT SHEET

Mod. No.	A.L. No.	Mod. No.	A.L. No.	Mod. No.	A.L. No.	Mod. No.	A.L. No.	Mod. No.	A.L. No.	Mod. No.	A.L. No.
2497	NA										
2498											
2499											
2500											
2501											
2502											
2503											
2504											
2505											
2506											
2507	35										
2508											
2509											
2510											
2511											
2512											
2513											
2514											
2515											
2516											
2517	NA										
2518											
2519											
2520											
2521											
2522											
2523											
2524											
2525											
2526											
2527											
2528											
2529											
2530											
2531											
2532											
2533											
2534											
2535											
2536											
2537											
2538											
2539											
2540											
2541											
2542											
2543											
2544											
2545											
2546											
2547											
2548											

† Incorporated in initial issue of Schedule
 N.A. Modification/Amendment not applicable to this Schedule.
 C. Modification/Amendment cancelled.

VULCAN Mk.2

INDEX OF ASSEMBLIES

Page 31

Assembly	Drawing No.	Page No.	Plate No.	Follows Page No.
AIRFRAME COMPONENTS	—	B1	—	—
ALIGHTING GEAR				
Undercarriage, main, with wheels, port and starboard	1 & 2K2751	CA1	—	—
Undercarriage, nosewheel and mounting	10K2725	CB1	—	—
ARMAMENT				
Bombsight Installation, T4	W1128	DA1	—	—
Pyrotechnics	—	DB1	—	—
CONTROLS				
Auto-pilot	V9091	EA1	—	—
Auto-stabiliser equipment	R4446, R4411 & S2398	EB1	—	—
Engine, in crew's nacelle	100.O.3948	EC1	—	—
Engine, forward front spar, centre portion fuselage, port and starboard	3 & 4.O.3948	ED1	—	—
Engine, aft front spar, in centre portion fuselage, port and starboard	3 & 4.O.3948	EE1	—	—
Flying, in crew's nacelle	1R4206	EF1	—	—
Flying, in centre portion fuselage	1R4188	EG1	—	—
Flying, in rear portion fuselage aft former 428A	20R4207	EH1	—	—
Flying, in mainplane inner, P & S	1 & 2R4417	EJ1	—	—
Flying, in mainplane outer, P & S	1 & 2R4187	EK1	—	—
Ram air turbine, crew's nacelle	Z9642	EM1	—	—
Steering, nosewheel	R3634	EN1	—	—
ELECTRICAL INSTALLATION				
Bomb bay	V8222 & V11319	FA1	—	—
Centre portion fuselage	V8494 & V11124	FB1	—	—

Assembly	Drawing No.	Page No.	Plate No.	Follows Page No.
ELECTRICAL INSTALLATION (Cont'd)				
Centre portion fuselage, below air intakes	1 & 2V8495 and 6 & 7V8495	FC1	-	-
Compartment, aft undercarriage bay, port	V8491	FD1	-	-
Console and mounting, port, in crew's nacelle . .	1V9145 & 19V9145	FE1	-	-
Console and mounting, starboard, in crew's nacelle	V9043	FF1	-	-
Crew's nacelle	V9592 & V11179	FG1	-	-
Engine bays	V9194 & 1V10787	FH1	-	-
Mainplane, port and starboard	V8061	FJ1	-	-
Nose portion	V8215 & V8490	FK1	-	-
Nosewheel bay	V9472 & V11301	FM1	-	-
Power compartment	V9488 & V11150	FN1	-	-
Rear portion	V8624	FP1	-	-
Undercarriage bay, port and starboard	V8223	FQ1	-	-
EQUIPMENT				
A.A.P.P. Installation	50F10364	GA1	-	-
Brake parachute	-	GB1	-	-
Compass installation	-	GC1	-	-
Curtains and Visors	-	GD1	-	-
Dinghy Installation	1Z7578	GE1	-	-
Fireproofing and Soundproofing	-	GF1	-	-
Instrument panels	-	GG1	-	-
Ladders	-	GH1	-	-
Periscope Installation, nav's station	24Z8684	GJ1	-	-
Seats and fittings	-	GK1	-	-
Sextant Stowage and mounting tray	1Z7973 & 1Z9705	GM1	-	-

VULCAN Mk.2

INDEX OF ASSEMBLIES

Page 33

Assembly	Drawing No.	Page No.	Plate No.	Follows Page No.
EQUIPMENT (Cont'd)				
Spectre nacelle installation, R.A.T.O.	16.O.3733	GN1	—	—
Trimming and floor covering	—	GP1	—	—
Ventilated suit system	Z9303 & Z9926	GQ1	—	—
EQUIPMENT SPECIAL OPERATIONAL				
Ballast & Socket plates (when special airborne canisters are not fitted)	Z9980	HA1	—	—
Cradles, removable, for type A, B & C	—	HB1	—	—
Flight refuelling, in nose (Removable fittings) ..	P3160	HC1	—	—
Panels, alternative, and E.Y. mounting control ..	V9365 & V13200	HD1	—	—
Panel, alternative, bombing	7V8963	HE1	—	—
Attachment of spectre nacelle (removable equipment)	O.3478	HF1	—	—
Window launching installation (removable fittings)	22 & 23Z8277	HG1	—	—
FUSELAGE				
Crew's nacelle	10D9580	JA1	—	—
Centre portion (Mod. 360)	11D9581	JB1	—	—
Doors, bomb, inner, port and starboard	1 & 2D8901 & 1 & 2D3802	JC1	—	—
Doors, bomb, outer, port and starboard	1 & 2D8900	JD1	—	—
Doors, main undercarriage, port and starboard ..	113 & 114F10167	JE1	—	—
Fairings, main undercarriage	1 & 2F8773 1 & 2F10802	JF1	—	—
Nose portion	10D9579	JG1	—	—
Rear portion	1D11106	JH1	—	—
GROUND EQUIPMENT				
Aircraft tool kit	Z9626	KA1	—	—
Flight tool kit	Z9625	KB1	—	—

INDEX OF ASSEMBLIES

Assembly	Drawing No.	Page No.	Plate No.	Follows Page No.
GROUND EQUIPMENT (Cont'd)				
Handling and storage	—	KC1	—	—
Jacking	—	KD1	—	—
Rigging	—	KE1	—	—
Testing and servicing	—	KF1	—	—
Towing and steering	—	KG1	—	—
Testing and Slingsing	—	KH1	—	—
S.O.O. (4,000 lb. Bomb Bay Pannier)	—	KJ1	—	—
MAINPLANES				
Aileron, inboard, port and starboard	1 & 2F9725	MA1	—	—
Aileron, outboard, port and starboard	1 & 2F9726	MA5	—	—
Elevator, inboard, port and starboard	85 & 86F7851, 89 & 90F7851	MB1	—	—
Elevator, outboard, port and starboard	1 & 2F9724, 111 & 112F9724	MB5	—	—
Mainplane and equipment, inner and outer, port and starboard	9 & 10F9700	MC1	—	—
Mainplane, inner, port and starboard	21 & 22F9701	MC1	—	—
Mainplane, outer, port and starboard	1 & 2F9702	MD1	—	—
Tip, mainplane detachable, port and	230 & 231F9910	ME1	—	—
POWER INSTALLATION				
Engine bulkheads	D10631	NA1	—	—
Engine installation	5, 6, 7, 8.O.3942 & O.3987	NB1	—	—
Engine mounting and hoisting	—	NC1	—	—

VULCAN Mk.2

INDEX OF ASSEMBLIES

Page 35

Assembly	Drawing No.	Page No.	Plate No.	Follows Page No.
RADIO AND RADAR INSTALLATION				
Centre section	3T4292	PA1	-	-
Crew's nacelle	2T4292	PB1	-	-
In Wing	5 & 6T4292	PC1	-	-
Nose portion, fuselage	1T4292	PD1	-	-
Rear fuselage and fin	15 & 16T4292	PE1	-	-
SERVICES				
Air conditioning	-	QA1	-	-
Air speed indicator	S2165, S2167, Q2211 & Q2212	QB1	-	-
Cooling, power units and radar equipment	-	QC1	-	-
Emergency, air	Q1875, Q1876, Q2079, Q2080 & 1879	QD1	-	-
Fire protection, explosion suppressor	Z9615	QE1	-	-
Fire protection, Firewire detector	Z9236	QF1	-	-
Fire protection, hand extinguisher	-	QG1	-	-
Fire protection, Methyl Bromide	-	QH1	-	-
Fuel system, aft front spar	100 & 101P3164	QJ1	-	-
Fuel system, bomb bay tanks, port and starboard	9 & 10P3584	QK1	-	-
Fuel system, recuperator and hydraulics,	25 & 26P3291	QL1	-	-
air supply lines to fuel tanks				
Fuel system, mainplane, port and starboard	1 & 2P3277	QM1	-	-
Fuel system, flight refuelling in nose portion, port and starboard	1 & 2P3180	QN1	-	-
Hydraulics	-	QP1	-	-
Pressurisation, fuel tank	-	QR1	-	-
Oxygen	Z9197 & Z9198	QS1	-	-

Assembly	Drawing No.	Page No.	Plate No.	Follows Page No.
SERVICES (Cont'd)				
Pneumatic	—	QT1	—	—
Ram air turbine	F10875	QU1	—	—
Bomb aimer's window, de-icing	21Q2245	QV1	—	—
Windscreen wiper installation	22Q2058	QW1	—	—
TAIL UNIT				
Fin	400H2230, 1H3030	RA1	—	—
Rudder	1H2760, 1H2952	RB1	—	—
TANKS				
De-icing	1Q2244	SA1	—	—
Fuel, A.A.P.P.	28F9809	SB1	—	—
Fuel	—	SC1	—	—
SCHEDULES				
Cable chart (Electrical)	—	T1	—	—
Cable chart (Wire)	—	U1	—	—
Pipe chart	—	V1	—	—

This file was downloaded
from the RTFM Library.
Link: www.scottbouch.com/rftm
Please see site for usage terms,
and more aircraft documents.

