

## CONTROLS

## FLYING, IN REAR PORTION FUSELAGE

Ref. No.	Part No.	Description	No. off	Matl. Spec.	Cl. of St.	Plate and Illust'n No.
					M.R.	
		1 2 3 4				
		CONTROLS, FLYING, RUDDER, REAR PORTION FUSELAGE AFT FORMER 428A (20R4207) Spares for:—				
2A/9500411	SKEFCO 400014	Bearing .....	2	—	C	EH1/1
	112R3577	BOLT, SPECIAL, ATTACHMENT POWER UNIT TO RUDDER HINGE, GROUP Consisting of:—	2	—	MR	EH1/2
28N/9156370	112aR3577 SP21	Bolt .....	1	S96		
		Nipple, grease .....	1	—	C	
	179.R.3577	BOLT, SPECIAL, ATTACHMENT POWER UNIT TO SUPPORT BEAM, GROUP Consisting of:—	2	—	MR	EH1/3
28N/9156370	179aR3577 SP21	Bolt .....	1	S96		
		Nipple, grease .....	1	—	C	
	4SS4645	Bush, fork-end, 13/32" o/d x 5/16" i/d x .14" long	2	S93	MR	EH1/4
	7SS4645	Bush, fork-end, 13/32" o/d x 5/16" i/d x .22" long	1	S93	MR	EH1/5
	17R3484	Gasket, between power unit and rotax motor	2	DTD776	MR	EH1/6
7454	6R4374	HOUSING, C/W BEARING, AUTO-STABILISER, MOUNTING, GROUP Spares for:—	4	—	MR/C	EH1/7
2A/9500413	SKEFCO 400015	Bearing .....	1	—	C	
17942	2SS5880	Plate, securing .....	1	—	C	
		Attachments—Housing, Part No. 6R4374				
28D/9436920	A25/1C	Bolt, 2 BA .....	16	—	C	
28M/5808573	A27/CS	Nut, slotted, 2 BA .....	16	—	C	
28P/9527619	SP90/C7	Pin, split, 1/16" dia. ....	16	—	C	
28W/9419402	SP13/C	Washer, 2 BA .....	16	—	C	
20256	4R4207	Lever, control rod .....	2	L65	C	EH1/8
7456	1R4391	LEVER, AUTO-STABILISER MOTOR, GROUP Spares for:—	1		B	EH1/9
	3R4391	Lever, bottom .....	1	DTD130		EH1/10
	2R4391	LEVER, TOP, GROUP Spares for:—	1	—		EH1/11
2A/9500411	SKEFCO 400014	Bearing .....	1	—	C	
17944	10SS5880	Plate, securing .....	1	—	C	
7457	5R4391	Spigot, screwed .....	1	S1	C	EH1/12
7458	4R4375	Spigot, plain .....	1	DTD130	C	EH1/13
	4R4391	Tube, torque .....	1	T45		

**CONTROLS**  
**FLYING, IN REAR PORTION FUSELAGE**

Ref. No.	Part No.	Description	No. off	Mati. Spec.	Cl. of St.	Plate and Illust'n No.
					M.R.	
		1 2 3 4				
7459	1R4409	LEVER, AUTO-STABILISER MOTOR, ..... GROUP	1	—	MR/B	EH1/14
		Spares for:—				
	3R4409	Lever, bottom .....	1	—		EH1/15
	2R4409	LEVER, TOP, GROUP .....	1	—		EH1/16
		Spares for:—				
2A/9500411	SKEFCO 400014	Bearing .....	1	—	C	
17944	10SS5880	Plate, securing .....	1	—	C	
7457	5R4391	Spigot, screwed .....	1	S1	C	EH1/17
7458	4R4375	Spigot, plain .....	1	DTD130	C	EH1/18
	4R4391	Tube, torque .....	1	T45		
7453	7R4207	LINK, CONNECTING, C/W BEARING, ..... CONTROL LEVER TO AUTO-STABILISER MOTOR, GROUP	1	—	B	EH1/19
		Spares for:—				
2A/9500465	SKEFCO I.132498	Bearing .....	1	—	C	
17942	2SS5880	Plate, securing .....	1	—	C	
		Attachments—Connecting Link Part No. 7R4207				
28D/1213609	A59/9G	Bolt, 5/16" BSF .....	1	—	C	
28D/1213554	A60/9G	Bolt, 5/16" BSF .....	1	—	C	
28M/14537	A58/GS	Nut, slotted, 5/16" BSF .....	2	—	C	
28P/9527619	SP90/C7	Pin, split, 1/16" dia. ....	2	—	C	
28W/9419403	SP13/G	Washer, 5/16" .....	2	—	C	
	ROTAX CA.1203	Motor (Pre-Mod. 1311) .....	2	—		EH1/20
	ROTAX CA.1203/1	Motor (Mod. 1311) .....	2	—	A	
5UD/4390817	NEWMARK NDN895	Motor, servo .....	1	—		EH1/21
		Attachments—Servo Motor, Part No. 895				
28D/9434879	A59/11G	Bolt, 5/16" BSF .....	1	—	C	
	A59/27E	Bolt, 1/4" BSF .....	1	—	C	
28M/4199604	A58/GS	Nut, slotted, 5/16" BSF .....	1	—	C	
28M/1011467	A27/ES	Nut, slotted, 1/4" BSF .....	1	—	C	

VULCAN Mk. 2

## CONTROLS

Page EH. 3

## FLYING, IN REAR PORTION FUSELAGE

Ref. No.	Part No.	Description	No. off	Matl. Spec.	Cl. of St.	Plate and Illust'n No.	
					M.R.		
		1	2	3	4		
		MOUNTING, RUDDER LEVER (1R3612) (Cont'd)					
	1R4105	LEVER, RUDDER, GROUP .....	1	—	MR	EH1/24	
		Spares for:—					
	5R4105	EYE-END, C/W BEARING, GROUP .....	2	—	MR	EH1/25	
		Spares for:—					
2A/9500465	SKEFCO	Bearing .....	1	—	C		
17942	I.132498	Plate, securing .....	1	—	C		
20258	2SS5880	EYE-END, C/W BEARING, GROUP .....	1	—		EH1/26	
	6R4105	Spares for:—					
2A/9500465	SKEFCO	Bearing .....	1	—	C		
17942	I.132498	Plate, securing .....	1	—	C		
	2SS5880						
	7R4105	HOUSING, FLANGED, GROUP .....	1	—		EH1/27	
		Spares for:—					
2A/9500413	SKEFCO	Bearing .....	1	—	C		
17942	400015	Plate, securing .....	1	—	C		
	2SS5880						
	17R3503	Attachments—Lever, Part No. 1R4105					
28M/5808571	A27/GS	Bolt, shouldered .....	1	S96	MR		
28P/9527619	SP90/C7	Nut, slotted, 5/16" BSF .....	1	—	C		
28W/9419403	SP13/G	Pin, split, 1/16" dia. ....	1	—	C		
		Washer, 5/16" .....	1	—	C		
		MOUNTING, RUDDER TORQUE TUBE .....				EH1/28	
		(1R4241)					
		Spares for:—					
17691	2R3614	HOUSING, BEARING, LOWER, GROUP .....	1	—	C	EH1/29	
		Spares for:—					
2A/9500464	SKEFCO	Bearing .....	1	—	C		
17945	CBA.2.1/2	Plate, securing .....	1	—	C		
	I.132895	Housing, bearing, upper .....	1	DTD364B		EH1/30	
	11SS5880						
	3R3614						
1433855	1R4960	TUBE, TORQUE, GROUP (Mod. 2183) .....	1	—	B	EH1/31	
		Spares for:—					
2A/9500464	SKEFCO	Bearing .....	1	—	C		
17705	CBA.2—1/2	Pivot-end .....	2	—	C		
	I.132895	Lever, bell crank .....	1	—			
	3R3504	Tube, torque .....	1	—			
	2R4960	Jo-bolt .....	4	—	MR		
	3R4960						
	404SS4837						

**CONTROLS**  
FLYING, IN REAR PORTION FUSELAGE

Ref. No.	Part No.	Description	No. off	Matl. Spec.	Cl. of St.	Plate and Illust'n No.
					M.R.	
		1 2 3 4				
9298	3R4392	ROD, CONTROL, ADJUSTABLE, RUDDER, ..... FROM AUTO-STABILISER LEVER TO RUDDER LEVER, GROUP Spares for:—	1	—	B	EH1/32
	9R4348	Adjuster .....	1	S95		EH1/33
	4R4348	EYE-END, C/W BEARING, GROUP ..... Spares for:—	1	—	MR	EH1/34
2A/9500465 17942	SKEFCO I.132498 2SS5880	Bearing ..... Plate, securing .....	1 1	— —	C C	
7898	14R4186	EYE-END, C/W BEARING, GROUP ..... Spares for:—	1	—	C	EH1/35
2A/9500465 17942	SKEFCO I.132498 2SS5880 5R4348 9R3666	Bearing ..... Plate, securing ..... Locknut ..... Locknut (Make from A27/JT) .....	1 1 1 1	— — S96 —	C C MR MR	EH1/36 EH1/37
9299	4R4393	ROD, CONTROL, ADJUSTABLE, RUDDER, ..... FROM AUTO-STABILISER LEVER TO RUDDER LEVER, CENTRE FORMER 428A, GROUP Spares for:—	1	—	B	EH1/38
	9R4348	Adjuster .....	1	—		EH1/33
7895	2R4393	EYE-END, C/W BEARING, GROUP ..... Spares for:—	1	—	C	EH1/39
2A/9500463 17940	SKEFCO CBA2 1SS5880	Bearing ..... Plate, securing .....	1 1	— —	C C	
	122R3577	FORK-END, GROUP ..... Spares for:—	1	—	MR	EH1/40
1674	101R3577 5R4348 9R3666	Bush ..... Locknut ..... Locknut (Make from A27/JT) .....	2 1 1	S96 S96 —	C MR MR	EH1/36 EH1/37
Attachments—Control Rods, Part Nos. 3R4392 & 4R4393						
28D/9434875	A59/20E	Bolt, 1/4" BSF .....	1	—	C	
28D/1213554	A60/9G	Bolt, 5/16" BSF .....	1	—	C	
28D/1213556	A60/11G	Bolt, 5/16" BSF .....	2	—	C	
28M/1011467	A27/ES	Nut, slotted, 1/4" BSF .....	3	—	C	
28M/4199604	A58/GS	Nut, slotted, 5/16" BSF .....	3	—	C	
28P/9527619	SP90/C7	Pin, split, 1/16" dia. ....	4	—	C	
28W/9418921	SP13/E	Washer, 1/4" .....	1	—	C	
28W/9419403	SP13/G	Washer, 5/16" .....	3	—	C	

VULCAN Mk. 2

## CONTROLS

Page EH. 5

## FLYING, IN REAR PORTION FUSELAGE

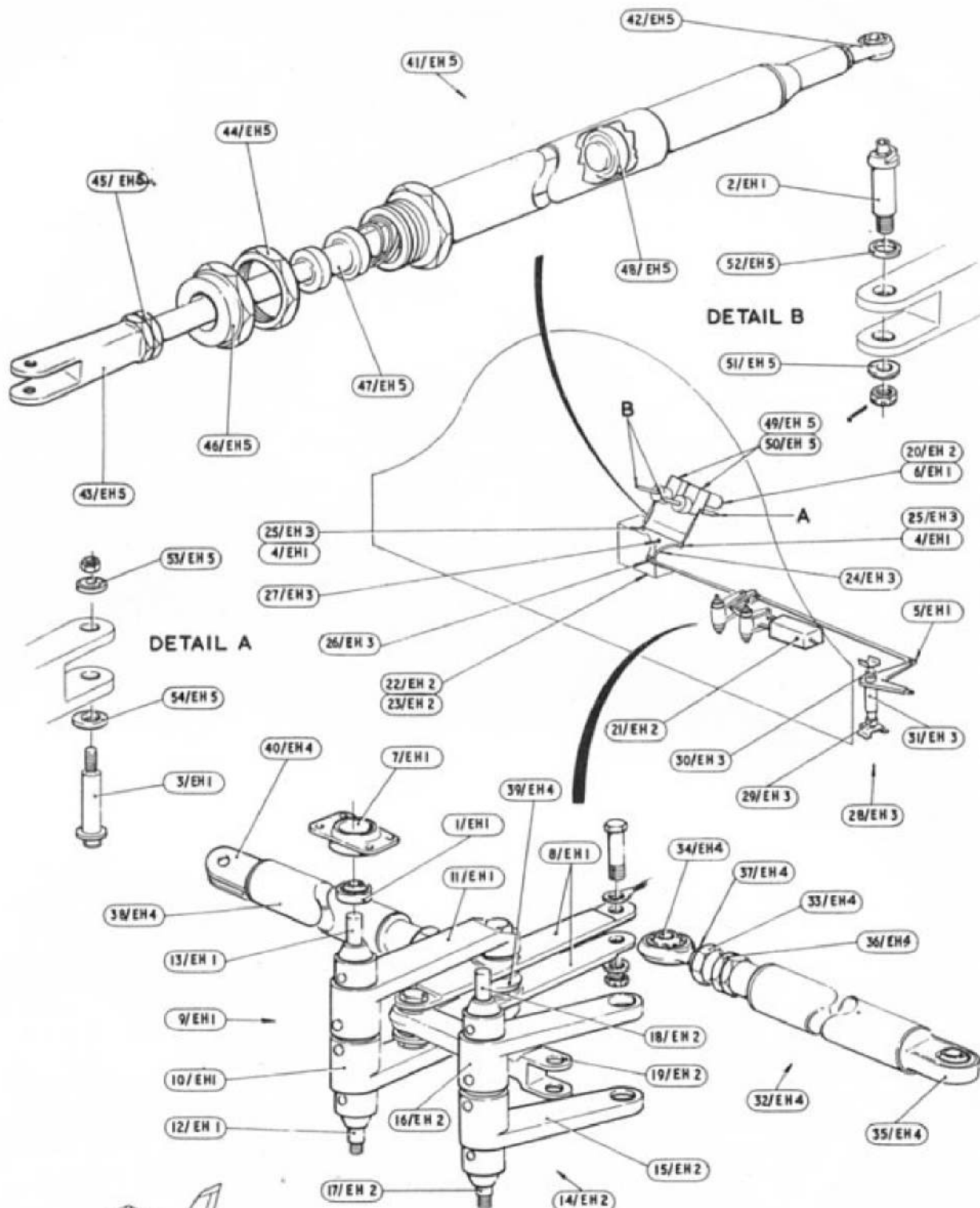
Ref. No.	Part No.	Description	No. off	Matl. Spec.	Cl. of	Plate and Illust'n No.
					St. M.R.	
		1 2 3 4				
7931	1R4439	ROD, SPRING, CONTROL, POWER UNITS ... TO RUDDER LEVER, GROUP (Pre-Mod. 2311)	2		A	
1510106	15R4439	ROD, SPRING, CONTROL, POWER UNITS ... TO RUDDER LEVER, GROUP (Mod. 2311)	2		B	EH1/41
7932	5R3611	Spares for:— END, SOCKET, C/W BEARING, GROUP ....	1	—	C	EH1/42
28R/8158748	HOFFMANN CM.2B	Spares for:— Bearing, rod-end .....	1	—	B	
3627	2R4439	Fork-end .....	1	DTD364B		EH1/43
	6R3996	Locknut .....	1	L65	C	EH1/44
	10R3540	Locknut, fork-end .....	1	DTD364B		EH1/45
	5R3996	Nut, cap .....	1	L65	MR	EH1/46
	8R3996	Plunger, 1-1/4" dia. x 1-3/4" long .....	1	Oilite Bar	MR	EH1/47
	9R3996	Plunger, 1-1/4" dia. x 1/2" long .....	1	Oilite Bar	MR	EH1/48
1695	12R3540	Spring (Pre-Mod. 2311) .....	1	DTD904	C	
	16R4439	Spring (Mod. 2311) .....	1		MR	
		Attachments for— Spring Control Rod Part No. and 15R4439				
28D/1213554	A60/9G	Bolt, 5/16" BSF .....	2	—	C	
28M/4199604	A58/GS	Nut, slotted, 5/16" BSF .....	2	—	C	
28P/9527619	SP90/C7	Pin, split, 1/16" dia. ....	2	—	C	
	BOULTON PAUL P.138L	Unit, power, main, port .....	1	—		EH1/49
	BOULTON PAUL P.138R	Unit, power, auxiliary, starboard .....	1	—		EH1/50
	27F7761	Washer, for bolt under nut, power unit to rudder hinge bracket	2	DTD364B	MR	EH1/51
1787	30F7761	Washer, for bolt under head, power unit to rudder hinge bracket	2	DTD364B	C	EH1/52
	34R3503	Washer, for bolt under nut, power unit to lug ... support beam	2	DTD364B	MR	EH1/53
	119R3577	Washer, for bolt under head, power unit to lug ... support beam	2	DTD423	MR	EH1/54



VULCAN Mk. 2

**CONTROLS  
FLYING, IN REAR PORTION FUSELAGE  
SUMMARY OF STANDARD ITEMS**

Stores Ref.		No. off	Stores Ref.		No. off	Stores Ref.		No. off
Section	Ref. No.		Section	Ref. No.		Section	Ref. No.	
28D	1213554	4	28N	9156370	4			
28D	1213556	2						
28D	1213609	1						
28D	9434879	1	28P	9527619	27			
28D	9435875	1						
28D	9436920	16						
			28R	13509	2			
28M	14537	8						
28M	1011467	2						
28M	5808571	1	28W	9418921	2			
28M	5808573	16	28W	9419402	16			
			28W	9419403	7			



CONTROLS  
FLYING IN REAR PORTION, FUSELAGE.

This file was downloaded  
from the RTFM Library.

Link: [www.scottbouch.com/rtfm](http://www.scottbouch.com/rtfm)

Please see site for usage terms,  
and more aircraft documents.

