

VULCAN MR. 2

CONTROLS

Page EK. 1

FLYING, MAINPLANE, OUTER

Ref. No.	Part No.	Description	No. off	Matl. Spec.	Cl. of St.	Plate and Illust'n No.
					M.R.	
		1 2 3 4				
		CONTROLS, FLYING, AT REAR SPAR, MAINPLANE, OUTER, PORT AND STARBOARD (1 & 2R4187)				
		Spares for:—				
	6SS4645	Bush, fork-end, 13/32" o/d x 5/16" i/d x .2" long	1	S93	MR	EK1/1
	7SS4645	Bush, fork-end, 13/32" o/d x 5/16" i/d x .22" long	1	S93	MR	EK1/2
7911	9SS4645	Bush, fork-end, 13/32" o/d x 5/16" i/d x .26" long	1	S93	C	EK1/3
7914	14SS4645	Bush, fork-end, 13/32" o/d x 5/16" i/d x .36" long	1	S93	C	EK1/4
		LEVER, AILERON, RIB 126.5, PORT AND STARBOARD (1 & 2R4159)				EK1/5
		Spares for:—				
2A/9500412	SKEFCO CBS3 3R4159	Bearing Bracket, mounting	1 1	— L53	C MR	
		Attachments—Bracket Part No. 3R4159				
	5R4159	Bolt (Make from A25/5C)	8	—	C	
7917	15SS4647	Bush, 15/32" o/d x 3/8" i/d x .38" long	1	S93	C	
6630	4R4159	LEVER, C/W BEARING, GROUP Spares for:—	1	—	C	
		Spares for:—				
2A/9500412 17942	SKEFCO CBS3 2SS5880	Bearing Plate, retaining	1 1	— —	C C	
		Attachments—Lever, Part No. 4R4159				
28D/1219748 28M/1011476 28P/9527619	A59/19J A27/JS SP90/C7	Bolt, 3/8" BSF Nut, slotted, 3/8" BSF Pin, split, 1/16" dia.	2 2 2	— — —	C C C	
6600	AS2811/8/057 5R4164	Tube, distance Washer, distance	1 1	— L65	C C	
		LEVER, AILERON, RIB 181.974, PORT AND STARBOARD (1 & 2R4164)				EK1/6
		Spares for:—				
2A/9500412	SKEFCO CBS3 8R4164	Bearing Bracket, mounting	1 1	— L65	C	
		Attachments—Bracket Part No. 8R4164				
28D/9133012 28M/5808573 28P/9527619 28W/9419402 7915	A25/3C A27/CS SP90/C7 SP13/C 8SS4647	Bolt, 2 BA Nut, slotted, 2 BA Pin, split, 1/16" dia. Washer, 2 BA Bush, 15/32" o/d x 3/8" i/d x .24" long	8 8 8 8 1	— — — — S93	C C C C C	

CONTROLS
FLYING, MAINPLANE, OUTER

Ref. No.	Part No.	Description	No. off	Matl. Spec.	Cl. of St.	Plate and Illust'n No.
					M.R.	
		1 2 3 4				
6631	4R4164	LEVER, AILERON, RIB 181.974, PORT AND STARBOARD (1 & 2R4164) (Cont'd)	1	—	C	
	or 10R4164	LEVER, C/W BEARING, GROUP	1	—	C	
2A/9500412 17942	SKEFCO	Spares for:—				
	CBS3	Bearing	1	—	C	
	2SS5880	Plate, securing	1	—	C	
		Attachments—Lever, Part No. 4 or 10R4164				
28M/1011476 28P/9527619	7R4164	Bolt (Make from A59/22J)	2	—		
	A27/JS	Nut, slotted, 3/8" BSF	2	—	C	
	SP90/C7	Pin, split, 1/16" dia.	2	—	C	
6600	AS2811/8/113	Tube, distance	1	—		
	5R4164	Washer, distance	1	L65	C	
		MOUNTING, POWER UNIT AILERON INBOARD BETWEEN RIBS 44.5 & 60.25 PORT AND STARBOARD (4 & 5R4144)				EK1/7
		MOUNTING, POWER, UNIT, AILERON OUTBOARD, BETWEEN RIBS 181.974 & 197.5, PORT AND STARBOARD (13 & 14R4145)				EK1/8
		Spares for:—				
2A/9501379	SKEFCO 22205	Bearing, roller, forward and aft attachment points	3	—	C	EK1/9
6615	3R4145	Bush, outboard attachments, power unit to Aileron	1	L65	C	EK1/10
7488	18R4145	Bush, inboard attachment power unit to Aileron	1	L65	C	EK1/11
28N/2001718	AGS2030/58	Circlip	2	—	C	EK1/12
		MOUNTING, TRANSMITTER, FOR AILERON CONTROL, SURFACES (Z.9598)				EK1/13
		Spares for:—				
7491	3Z9598	Collar	1	S96	C	
	5Z9598	Lever	1	DTD683	MR	
8729	7Z9598	ROD, CONTROL, GROUP	1	—	C	
		Spares for:—				
2516	6Z9598	Eye-end	1	S98		
	1SS4091	Fork-end	1	S96	C	
6A/4102	SANGAMO	Transmitter	1	—	A	
	WESTON S132	Attachments—Mounting, Part No. Z9598				
28D/1011019	A25/8C	Bolt, 2 BA, transmitter	8	—	C	
28D/9133013	A25/5C	Bolt, 2 BA, lever	4	—	C	
28M/5808573	A27/CS	Nut, slotted, 2 BA	4	—	C	
28M/1012015	AGS2001/C1/66	Nut, stiff, 2 BA	8	—	C	
28P/9486478	SP90/C5	Pin, split, 1/16" dia.	4	—	C	
28W/9419402	SP13/C	Washer, 2 BA	12	—	C	

VULCAN Mk. 2

CONTROLS

Page EK. 3

FLYING, MAINPLANE, OUTER

Ref. No.	Part No.	Description	No. off	Matl. Spec.	Cl. of St.	Plate and Illust'n No.
					M.R.	
		1 2 3 4				
		MOUNTING, POWER UNIT, AILERON, INBOARD, BETWEEN RIBS 44.5 & 60.25, (4 & 5R4144) AND OUTBOARD BETWEEN RIBS 181.974 & 197.5 (13 & 14R4145) PORT AND STARBOARD (Cont'd)				
9378	18R4145	Pin, forward attachment, power unit	1	S96	C	EK1/14
	20R4145	Pin, attachment, power unit to aileron	1	S96	MR	EK1/15
6614	1R4167	ROD, SPRING, CONTROL, GROUP	1	—	A	
		(Pre-Mod. 2311)				
1510107	14R4167	ROD, SPRING, CONTROL, GROUP	1	—	A	EK1/16
		(Mod. 2311)				
		Spares for:—				
1433815	12R4167	Coupling	1	L65	C	
7900	2R4167	EYE-END, C/W BEARING, GROUP	1	—	C	EK1/17
		Spares for:—				
2A/9500463	HOFFMAN					
	CA1	Bearing	1	—	C	
17940	1SS5880	Plate, securing	1	—	C	
	11R4167	EYE-END, ADJUSTABLE, C/W BEARING, GROUP	1	—	MR	EK1/18
		Spares for:—				
2A/9500463	HOFFMAN					
	CA1	Bearing	1	—	C	
17940	1SS5880	Plate, securing	1	—	C	
	13R4167	Locknut (Make from A27/GT)	1	—		
3619	6R3997	Nut	1	L65	C	
1433811	6R4166	Nut, cap	1	L65	C	
1433812	7R4166	Plunger, guide, "Oilite"	1	—	C	EK1/19
	8R4166	Plunger, guide	1	S1	MR	EK1/20
	8R4167	Rod, piston	1	T35		
	6R4167	Spring (Pre-Mod. 2311)	1	—	MR	
	15R4167	Spring (Mod. 2311)	1	—	MR	
		Attachments for Spring Control Rod, Part No. 1R4167 or 14R4167				
28D/1215687	A59/8E	Bolt, 1/4" BSF	4	—	C	
	6R4144	Bolt, 1/4" BSF inboard power unit only	1	—		
28M/1011467	A27/ES	Nut, slotted, 1/4" BSF	4	—	C	
28P/9527619	SP90/C7	Pin, split, 1/16" dia.	4	—	C	
28W/9418920	SP10/E	Washer, 1/4"	4	—	C	
6621	3R4144	Trunnion, inboard power unit	1	S96	C	EK1/21
6622	4R4145	Trunnion, outboard power unit	1	S96	C	EK1/22
		UNIT, POWER AND MOTOR (11R3145)				EK1/23
		Spares for:—				
6606	16R4145	CLIP, MANACLE, GROUP	1	—	C	
	or					
	21R4145	CLIP, MANACLE, GROUP	1	—		

CONTROLS
FLYING, MAINPLANE, OUTER

Ref. No.	Part No.	Description	No. off	Matl. Spec.	Cl. of St.	Plate and Illust'n No.	
					M.R.		
		1	2	3	4		
		UNIT, POWER AND MOTOR (11R3145) (Cont'd)					
5UD/4390818	ROTAX CA1201 CA1201/1	MOTOR, A.C. (Pre-Mod. 810 & 1311)	1	—	A	EK1/24	
		MOTOR, A.C. (Mod. 810 & 1311)	1				
		(Mod. 2287 with Rotax Mod. 7084 embodied)					
	BOULTON PAUL P135/45/350	Unit, power	1			EK1/25	
6619	8R4145	Washer, trunnion, outboard	2	L65	C	EK1/26	
6620	9R4145	Washer, trunnion, inboard	2	L65	C	EK1/27	
6618	17R4145	Washer, under nut, forward	2	L65	C	EK1/28	
6623	3R4187	ROD, CONTROL, FROM LEVER, RIB	1	—	B	EK1/29	
		618.186 TO LEVER INBOARD POWER UNIT, PORT, GROUP					
6624	4R4187	ROD, CONTROL, FROM LEVER, RIB	1	—	B		
		618.186 TO LEVER INBOARD POWER UNIT, STARBOARD, GROUP					
		Spares for:—					
7901	12R4187	EYE-END, C/W BEARING, GROUP	1	—	B	EK1/30	
		Spares for:—					
2A/9500463	SKEFCO CBA2	Bearing	1	—	C		
	SKEFCO						
2A/9500465	I.132498	Bearing	1	—	C		
17940	1SS5880	Plate, securing	1	—	C		
17942	2SS5880	Plate, securing	1	—	C		
7898	14R4186	EYE-END, C/W BEARING, GROUP	1	—	C	EK1/31	
		Spares for:—					
2A/9500465	SKEFCO	Bearing	1	—	C		
17942	I.132498 2SS5880	Plate, securing	1	—	C		
6625	5R4187	ROD, CONTROL, FROM LEVER, INBOARD	1	—	B	EK1/32	
		POWER UNIT TO LEVER, RIB 126.5, PORT, GROUP					
6626	6R4187	ROD, CONTROL, FROM LEVER, INBOARD	1	—	B		
		POWER UNIT TO LEVER, RIB 126.5, STARBOARD, GROUP					
		Spares for:—					
	11R4186	Fork-end	2	L65	MR		

VULCAN Mk. 2

CONTROLS
FLYING, MAINPLANE, OUTER

Page EK. 5

Ref. No.	Part No.	Description	No. off	Matl. Spec.	Cl. of St.	Plate and Illust'n No.
					M.R.	
		1 2 3 4				
	17R4187	ROD, CONTROL, FROM LEVER, RIB 126.5 TO LEVER, RIB 181.974, PORT AND STARBOARD, GROUP	1	—		EK1/33
7897	12R4186	Spares for:— EYE-END, C/W BEARING, GROUP Spares for:—	1	—	C	EK1/34
2A/9500465 17942	SKEFCO I.132498 2SS5880	Bearing Plate, securing	2 2	— —	C C	
7898	14R4186	EYE-END, C/W BEARING, GROUP Spares for:—	1	—	C	EK1/31
2A/9500465 17942	SKEFCO I.132498 2SS5880	Bearing Plate, securing	1 1	— —	C C	
4099	77R3577	Locknut, R.H. thread	1	DTD364B	C	
4100	78R3577	Locknut, L.H. thread	1	DTD364B	C	
4101	79R3577	Screw, adjusting	1	T45 or S1	C	
	100R3577	Sleeve, screwed	1	DTD364B		EK1/35
	18R4187	Sleeve, screwed	1	DTD130		EK1/36
	14R4187	ROD, CONTROL, FROM LEVER, RIB 181.974 TO LEVER OUTBOARD POWER UNIT, PORT, GROUP	1	—	MR	EK1/37
8070	15R4187	ROD, CONTROL, FROM LEVER, RIB 181.974 TO LEVER OUTBOARD POWER UNIT, STARBOARD, GROUP	1	—	B	
	9R4184	Spares for:— EYE-END, C/W BEARING, GROUP Spares for:—	1	—		EK1/38
2A/9500465 17942	SKEFCO I.132498 2SS5880	Bearing Plate, securing	1 1	— —	C C	
7902	11R4187	EYE-END, C/W BEARING, GROUP Spares for:—	1	—	C	EK1/39
2A/9500463 17940	SKEFCO CBA2 1SS5880	Bearing Plate, retaining	1 1	— —	C C	
28D/1212321 28D/1213555 28D/1213556 20381	A60/8E A60/10G A60/11G 19R4187 or A60/26G	Attachments—Control Rods Bolt, 1/4" BSF Bolt, 5/16" BSF Bolt, 5/16" BSF Bolt, special Bolt, 5/16" BSF	4 4 2 2 2	— — — S96 —	C C C C C	

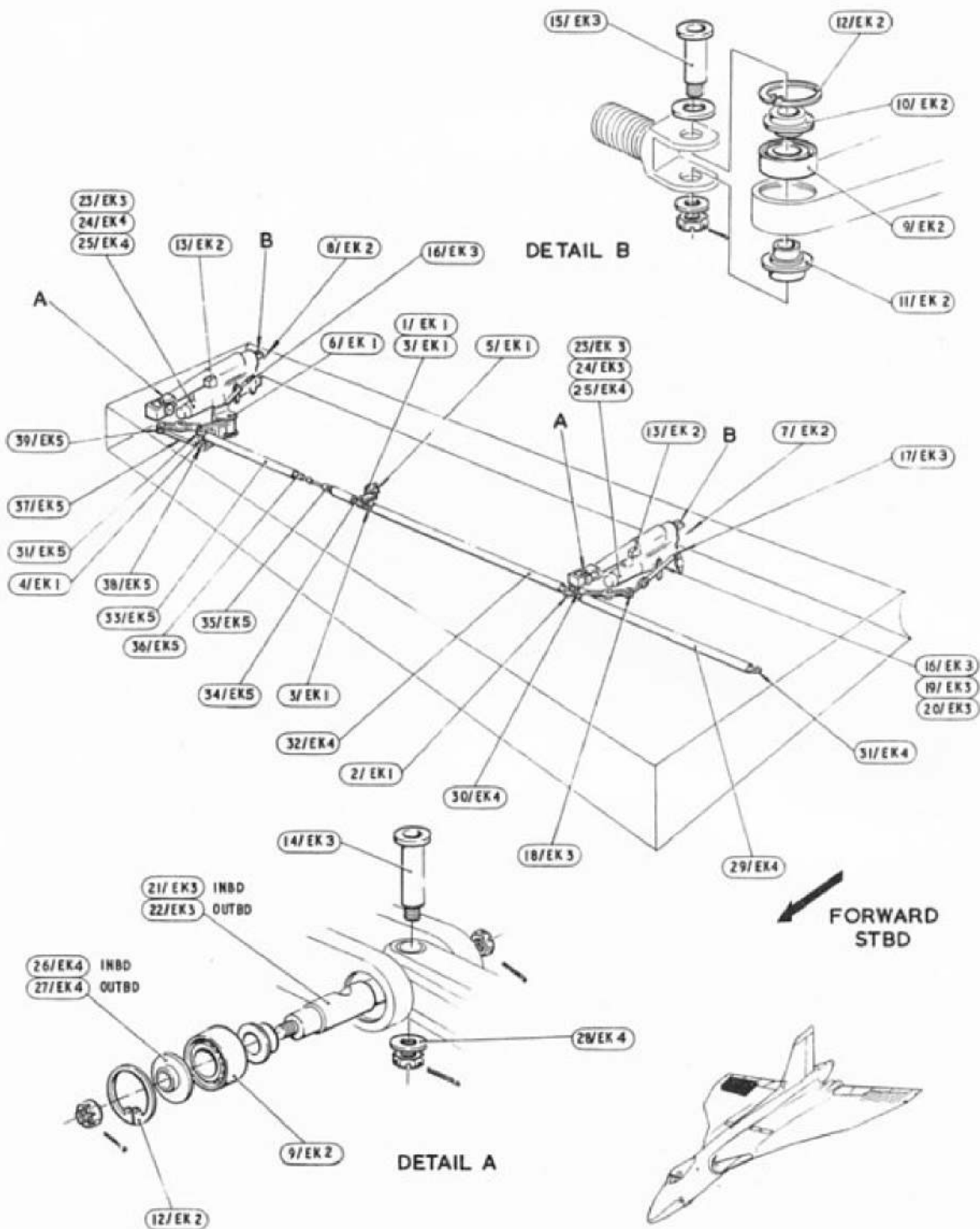
CONTROLS
FLYING, MAINPLANE, OUTER

Ref. No.	Part No.	Description	No. off	Matl. Spec.	Cl. of St.	Plate and Illust'n No.
					M.R.	
		1 2 3 4				
		Attachments—Control Rods (Cont'd)				
28M/4095947	A58/ES	Nut, slotted, 1/4" BSF	4	—	C	
28M/4199604	A58/GS	Nut, slotted, 5/16" BSF	8	—	C	
28P/9527619	SP90/C7	Pin, split, 1/6" dia.	12	—	C	
28W/9418921	SP13/E	Washer, 1/4"	4	—	C	
28W/9419403	SP13/G	Washer, 5/16"	8	—	C	

VULCAN Mk. 2

CONTROLS
 FLYING, MAINPLANE, OUTER
 SUMMARY OF STANDARD ITEMS

Stores Ref.		No. off	Stores Ref.		No. off	Stores Ref.		No. off
Section	Ref. No.		Section	Ref. No.		Section	Ref. No.	
28D	1011019	8	28M	1278190	8	28P	9486478	4
28D	1212321	4	28M	13935	4	28P	9527619	28
28D	1213555	4	28M	14537	8			
28D	1213556	2	28M	1011467	4			
28D	1215687	4	28M	1011476	4	28W	9418920	4
28D	1219748	2	28M	5808573	12	28W	9418921	4
28D	9133012	8				28W	9419402	20
28D	9133013	4				28W	9419403	8
			28N	2001718	2			



CONTROLS
FLYING MAINPLANE OUTER



The P/Q Family

Why "P/Q"?

The P/Q family of Masks

MCA "Warning Connector"

P/Q 1

P/Q 2

P/Q 4

V-Type

V-Type Superior

A-Type

A-Type Superior

A-Type

A-Type

A-13A/1

A-13A/2

Check Down

This file was downloaded from the RTFM Library. Link: www.scottbouch.com/rfm Please see site for usage terms, and more aircraft documents.