

VULCAN Mk. 2

ELECTRICAL INSTALLATION
IN ENGINE BAYS

Page FH. 1

Ref. No.	Part No.	Description	No. off	Matl. Spec.	Cl. of St.	Plate and Illust'n No.
					M.R.	
		1 2 3 4				
5X/6200370	1V5650	ELECTRICAL INSTALLATION, No. 1 ENGINE BAY, E.C.U.B.O.L. 301 AND E.C.U. 200 INSTALLATION (1V9194) (Pre-Mod. 906) (1V10787) (Mod. 906) Spares for:— Block, terminal (Mod. 1320)	2	—	C	FH1/1
	—	BOX, TRANSFORMER, MERZ-PRICE, 22J	—	—	—	
22722	9V7453	Spares for:— BOX, TRANSFORMER, GROUP	1	—	A	FH1/2
1432832	7V7452	Spares for:— PILLAR, GROUP	6	—	C	FH1/3
		Consisting of:—				
	7aV7452	Stud	1	—		
	7bV7452	Base	1	—		
28P/9429654	SP28/E4	Pin, taper, 1/16" dia.	1	—		
	5V/7863	Bus-Bar	1	—		FH1/4
	6V/7863	Bus-Bar	3	—		FH1/5
	1V8133	LOOM, CABLE, GROUP (Pre-Mod. 712)	1	—		
	1V9936	LOOM, CABLE, GROUP (Mod. 712)	1	—		
	13V7862	Plate, packing	3	—		FH1/6
	ENGLISH ELEC.					
5UB/4342773	—	Transformer, current (Pre-Mod. 712)	3	—	A	
5UB/4342775	—	Transformer, current (Mod. 712)	3	—	C	FH1/7
6116191	AS8671/27	Capping, 27" long (Pre-Mod. 906)	1	—	C	
6116189	AS8671/31	Capping, 31" long (Pre-Mod. 906)	1	—	C	
	AS8674/8	Capping, 8" long (Pre-Mod. 906)	1	—		
1510765	AS8674/16	Capping, 16" long (Pre-Mod. 906)	1	—		
	AS8674/19	Capping, 19" long	1	—		FH1/8
	AS8674/27	Capping, 27" long (Pre-Mod. 906)	1	—		
1510721	AS4799	Clip, spring	3	—	MR	FH1/9
	AS4825	Clip, spring (9 off Pre-Mod. 906)	11	—	MR	FH1/10
	1V5969	CONNECTOR, HEAVY DUTY, GROUP	1	—	MR	FH1/11
	K.L.G.					
	B4823	Connector, type BBH/1	2	—	MR	FH1/12
4697	29V5889	Cover, heavy duty connector	2	BSS972	C	FH1/13
7679	8SS4622	Duct, cable 8" long (Pre-Mod. 906)	1	—	C	
7684	16SS4622	Duct, cable, 16" long (Pre-Mod. 906)	1	—	C	
	19SS4622	Duct, cable, 19" long	1	—		FH1/14
7687	27SS4622	Duct, cable, 27" long (Pre-Mod 906)	1	—	C	
	31SS4622	Duct, cable 31" long (Pre-Mod. 906)	1	—	MR	
	19SS4623	Duct, cable 19" long	1	—	MR	FH1/15
	27SS4623	Duct, cable 27" long (Pre-Mod. 906)	1	—	MR	
	K.L.G.					
	B606	Locknut, for connector	4	—	MR	FH1/16
5X/9472952	HC/302	Lug	5	—	C	
5X/9462745	HC/304	Lug	5	—	C	

ELECTRICAL INSTALLATION
IN ENGINE BAYS

Ref. No.	Part No.	Description	No. off	Matl. Spec.	Cl. of St.	Plate and Illust'n No.
					M.R.	
		1 2 3 4				
		ELECTRICAL INSTALLATION, No. 1 ENGINE BAY, E.C.U.B.O.L. 301 AND E.C.U. 200 INSTALLATION (1V9194) (Pre-Mod. 906) (1V10787) (Mod. 906) (Cont'd.)				
5K/6428047	—	Sleeve, insulating	2	—	C	
5K/9712745	—	Sleeve, insulating	7	—	C	
5X/4491488	15V5650	Socket, single (Mod. 1320)	7	—		
	34V10787	Stowage, earthing	1	—	C	FH1/17
5X/9709497	—	Splice, inline	3	—	C	
5X/9465014	—	Splice, inline	6	—	C	
	1SS4052	Terminal, earth	2	—	MR	FH1/18
	7V9194	Tube, conduit	2	L56		FH1/19
37A/4387755	NB253					
or	or					
37A/8387626	C10TS3	Unit, H.E. ignition	2	—	A	FH1/20
2995-99-						
4382371	NB6103	Unit, H.E. ignition (Mod. 1320)	1	—	A	FH1/21
37F/4382745	D15201	Unit, time delay (Mod. 1320)	1	—	A	FH1/22
	—	WIRING No. 1 ENGINE BAY	—	—	—	
		Spares for:—				
	2009V7909	CABLE, (F2009), IGNITION BREAK TO L.H.	1	—	MR	
		IGNITOR, GROUP				
	2010V7909	CABLE, (F2010), IGNITION BREAK TO R.H.	1	—	MR	
		IGNITER, GROUP				
	3504V7909	CABLE, (F3504), No. 1 H.E. UNIT TO	1	—	MR	
		IGNITOR BREAK, GROUP (Mod. 1320)				
	3505V7909	CABLE, (F3505), No. 1 H.E. UNIT TO	1	—	MR	
		TB.1668, GROUP (Mod. 1320)				
	3726V7909	CABLE, (F3726), INTER BULKHEAD TO	1	—		
		TB.1708, GROUP (Mod. 1615)				
17458	3731V7909	CABLE, (F3731), AIR SOL. VALVE TO	1	—	C	
		TB.1708, GROUP (Mod. 1615)				
	441V7909	CABLE, (F441), GROUP (Pre-Mod. 906)	1	—		
22718	8440V7909	CABLE, (F441), BULKHEAD 546 TO	1	—	C	
		ENGINE BREAK, GROUP				
	1435V7909	CABLE, (F1435), GROUP (Pre-Mod. 906)	1	—		
	8442V7909	CABLE, (F1435), No. 1 ALTERNATOR TO	1	—		
		EARTH, GROUP				
	7278V7909	CABLE, (F1437), GROUP (Pre-Mod. 906)	1	—		
	8443V7909	CABLE, (F1437) 22J TO EARTH, GROUP	1	—		
	480V7909	CABLE, (F480), GROUP (Pre-Mod. 906)	1	—	MR	
	8451V7909	CABLE, (F480), R.H. H.E. UNIT TO IGNITION ..	1	—	MR	
		BREAK, GROUP				
	1438V7909	CABLE, (F1438), GROUP (Pre-Mod. 906)	1	—		
17400	8452V7909	CABLE, (F1438), No. 1 ENGINE H.D.C. TO	1	—	C	
		No. 1 ALTERNATOR, GROUP				
	1436V7909	CABLE, (F1436), GROUP (Pre-Mod. 906)	1	—		
17401	8453V7909	CABLE, (F1436), 22J TO No. 1	1	—	C	
		ALTERNATOR, GROUP				

VULCAN Mk. 2

ELECTRICAL INSTALLATION

Page FH. 3

ENGINE BAY

Ref. No.	Part No.	Description	No. off	Matl. Spec.	Cl. of St.	Plate and Illust'n No.
					M.R.	
		1 2 3 4				
12574	1434V7909	CABLE, (F1434), GROUP (Pre-Mod. 906)	1	—	C	
	8454V7909	CABLE, (F1434), PLUG 570 TO No. 1	1	—		
		ALTERNATOR, 22J, EXCITER AND C.S.D., GROUP				
	479V7909	CABLE, (F479), GROUP (Pre-Mod. 906)	1	—	MR	
	8455V7909	CABLE, (F479), IGNITION BREAK TO L.H. H.E. UNIT, GROUP	1	—		
	8768V7909	CABLE, (F2017), GROUP (Pre-Mod. 906)	1	—		
	8720V7909	CABLE, (F2017), BULKHEAD PLUG 742 TO INNER BULKHEAD, GROUP (Mod. 1284)	1	—		
	8554V7909	CABLE, (F638), GROUP (Pre-Mod. 906)	1	—		
	8448V7909	CABLE, (F638), GROUP (Mod. 1745)	1	—		
	9055V7909	CABLE, (F155), DETECTOR SWITCH 4R TO 5B, GROUP (Pre-Mod. 2045)	1	—		
	9718V7909	CABLE, (F155), GROUP (Mod. 2045)	1	—		
	9056V7909	CABLE, (F157), DETECTOR SWITCH 6R TO 7B, GROUP (Pre-Mod. 2054)	1	—		
	9714V7909	CABLE, (F157), GROUP (Mod. 2054)	1	—		
	9057V7909	CABLE, (F158), DETECTOR SWITCH TR TO 8B, GROUP (Pre-Mod. 2054)	1	—		
	9720V7909	CABLE, (F158), GROUP (Mod. 2054)	1	—		
	9058V7909	CABLE, (F159), AT DETECTOR SWITCH 4B, GROUP (Pre-Mod. 2054)	1	—		
	9721V7909	CABLE, (F159), GROUP (Mod. 2054)	1	—		
	9072V7909	CABLE, (F154), AT DETECTOR SWITCH 8R, GROUP (Pre-Mod. 2054)	1	—		
	9717V7909	CABLE, (F154), GROUP (Mod. 2054)	1	—		
	9073V7909	CABLE, (F156) AT DETECTOR SWITCHES 5R AND 6B, GROUP (Pre-Mod. 2054)	1	—		
9719V7909	CABLE, (F156), GROUP (Mod. 2054)	1	—			
1505135	9522V7909	CABLE, (F2017), GROUP	1	—		C
	3148V7909	CABLE, (F3148), GROUP (Pre-Mod. 906)	1	—		
	9610V7909	CABLE, (F3148), GROUP (Mod. 1856)	1	—		C
1433180	2017V9114	CABLE, (F2017), BULKHEAD 742 TO C.S.D.U. THERMOMETER, GROUP (Mod. 1284)	1	—		
	7177V9114	CABLE, (F1434), No. 1 ALTERNATOR AND C.S.D. TO FORWARD BREAK 570, GROUP	1	—	MR	

ELECTRICAL INSTALLATION

ENGINE BAY

Ref. No.	Part No.	Description	No. off	Matl. Spec.	Cl. of St.	Plate and Illust'n No.
					M.R.	
		1 2 3 4				
		ELECTRICAL INSTALLATION No. 2 ENGINE BAY, E.C.U. B.O.L. 301 AND E.C.U. 200 INSTALLATION (2V9194) (Pre-Mod. 906) (2V10787) (Mod. 906) Spares for:—				
5X/6200370	1V5650	BLOCK, terminal (Mod. 1360)	2	—	C	FH1/23
		BOX, TRANSFORMER, MERZ-PRICE 23J				
		(2V7863) Spares for:—				
22723	10V7453	BOX, TRANSFORMER, GROUP	1	—	C	FH1/24
		Spares for:—				
1432832	7V7452	PILLAR, GROUP	6	—	C	FH1/25
		Consisting of:—				
	7aV7452	Stud	1	—		
	7bV7452	Base	1	—		
28P/9429654	SP28/E4	Pin, taper, 1/16" dia.	1	—	C	
	5V/7863	Bus-Bar	1	—		FH1/26
	6V/7863	Bus-Bar	3	—		FH1/27
	1V8133	LOOM, CABLE, GROUP (Pre-Mod. 712)	1	—		
1505162	1V9926	LOOM, CABLE, GROUP (Mod. 712)	1	—	C	
	13V7862	Plate, packing	3	—		FH1/28
5UB/4342773	—	Transformer, current (Pre-Mod. 712)	3	—	A	
5UB/4342773	—	Transformer, current (Mod. 712)	3	—	A	FH1/29
1510761	AS8674/10	Capping, 10" long (2 off Pre-Mod. 906)	3	—	C	FH1/30
	AS8674/11	Capping, 11" long (Pre-Mod. 906)	1	—		
	AS8674/12	Capping, 12" long (Pre-Mod. 906)	1	—		
	AS8674/22	Capping, 22" long	1	—		FH1/31
6116062	AS8674/31	Capping, 31" long	1	—	C	
	8V8993	Clamp, half	4	—		FH1/32
	AS4799	Clip, spring (1 off Pre-Mod. 906)	4	—	MR	FH1/33
	AS4825	Clip, spring (7 off Pre-Mod. 906)	12	—	MR	FH1/34
	K.L.G.					
	B4823	Connector, type BBH/1	2	—	MR	FH1/35
	10SS4622	Duct, cable 10" long (2 off Pre-Mod. 906)	3	—	MR	FH1/36
	19SS4622	Duct, cable 19" long (Pre-Mod. 906)	1	—		
7685	22SS4622	Duct, cable 22" long	1	—	C	FH1/37
	29SS4622	Duct, cable 29" long (Pre-Mod. 906)	1	—	MR	
7692	11SS4623	Duct, cable 11" long (Pre-Mod. 906)	1	—	C	
7691	12SS4623	Duct, cable 12" long (Pre-Mod. 906)	1	—	C	
	19SS4623	Duct, cable 19" long	1	—	MR	FH1/38
	29V10787	Fairlead	2	—		
	K.L.G.					
	B606	Locknut, for connector	4	—	MR	FH1/39
5X/9462952	HC/302	Lug	5	—	C	
5X/9462745	HC/304	Lug	5	—	C	
5K/9459253	—	Sleeve, insulating (Mod. 1284)	2	—	C	
5K/9712745	—	Sleeve, insulating	7	—	C	
5X/4491488	15V5650	Socket, single (Mod. 1320)	7	—	C	
5X/9709497	—	Splice, inline	3	—	C	
5X/9465014	—	Splice, inline	6	—	C	

VULCAN ML 2

ELECTRICAL INSTALLATION

Page FH. 5

ENGINE BAYS

Ref. No.	Part No.	Description	No. off	Matl. Spec.	Cl. of St.	Plate and Illust'n No.
					M.R.	
		1 2 3 4				
		ELECTRICAL INSTALLATION No. 2 ENGINE BAY, E.C.U. B.O.L. 301 AND E.C.U. 200 INSTALLATION (2V9194) (Pre-Mod. 906) (2V10787) (Mod. 906) (Cont'd.)				
	34V10787	Stowage, earthing	2	—	MR	FH1/40
	1SS4052	Terminal, earth	2	—	MR	FH1/41
	7V9194	Tube, conduit	2	L56		FH1/42
37A/4387755	NB253 or	Unit, H.E. ignition	2	—	A	FH1/43
37A/4387626	C10TS3	Unit, H.E. ignition (Mod. 1320)	1	—	A	FH1/44
2995-99-	NB6103	Unit, time delay (Mod. 1320)	1	—	A	FH1/45
4382371	D15201	WIRING, No. 2 ENGINE BAY	—	—	—	
37F/4382745		Spares for:—				
	861V7909	CABLE, (F861), PORT ROCKET RELEASE UNIT TO BOMB BAY, GROUP	1	—		
	826V7909	CABLE, (F862), PORT COCKING TEST PLUG TO BOMB BAY, GROUP	1	—		
	1433V7909	CABLE, (F1433), FIREWALL BREAK 571 TO FIREWALL BREAK 570, GROUP	1	—	MR	
17574	1439V7909	CABLE, (F1439), FIREWALL BREAK TO ALTERNATOR, GROUP	1	—	C	
17575	1440V7909	CABLE, (F1440), FIREWALL BREAK TO ALTERNATOR, GROUP	1	—	C	
	2011V7909	CABLE, (F2011), IGNITION BREAK TO No. 2 L.H. IGNITOR, GROUP	1	—	MR	
	2012V7909	CABLE, (F2012), IGNITION BREAK TO No. 2 R.H. IGNITOR, GROUP	1	—	MR	
	3506V7909	CABLE, (F3506), IGNITION BREAK TO No. 2 H.E. UNIT, GROUP (Mod. 1320)	1	—	MR	
22716	3507V7909	CABLE, (F3507), No. 2 H.E. UNIT TO TB.1669, GROUP (Mod. 1320)	1	—	C	
	3727V7909	CABLE, (F3727), INTER BULKHEAD TO TB.1709, GROUP (Mod. 1615)	1	—		
17424	3732V7909	CABLE, (F3732), AIR. SOL. VALVE TO TB.1709, GROUP (Mod. 1615)	1	—	C	
	7808V7909	CABLE, (F860), PORT SNATCH PLUG TO TB.'s 456, 457 AND 458, GROUP	1	—		
	8548V7909	CABLE, (F653), GROUP (Pre-Mod. 906)	1	—		
	8445V7909	CABLE, (F653), GROUP	1	—		
	442V7909	CABLE, (F442), GROUP (Pre-Mod. 906)	1	—		
22719	8446V7909	CABLE, (F442), BULKHEAD PLUG 547 TO ENGINE BREAK, GROUP	1	—	C	
	1466V7909	CABLE, (F1466), GROUP (Pre-Mod. 906)	1	—		
	8447V7909	CABLE, (F1466), 23P TO EARTH, GROUP	1	—		
	1464V7909	CABLE, (F1464), GROUP (Pre-Mod. 906)	1	—		
	8449V7909	CABLE, (F1464), No. 2 ALTERNATOR TO EARTH, GROUP	1	—		
	985V7909	CABLE, (F985), GROUP (Pre-Mod. 906)	1	—		
	8450V7909	CABLE, (F985), ENGINE PLUG 739 TO ENGINE BREAK, GROUP	1	—		
1510705	482V7909	CABLE, (F482), GROUP (Pre-Mod. 906)	1	—	C	
1505098	8456V7909	CABLE, (F482), IGNITION BREAK TO No. 2 R.H. H.E. UNIT, GROUP	1	—	C	

ELECTRICAL INSTALLATION

ENGINE BAYS

Ref. No.	Part No.	Description	No. off	Matl. Spec.	Cl. of St.	Plate and Illust'n No.	
					M.R.		
		1 2 3 4					
1510327	7334V7909	CABLE, (F1463), GROUP (Pre-Mod. 906)	1	—	C		
	8457V7909	CABLE, (F1463), ENGINE PLUG 572 TO 23J C.S.D. AND ALTERNATOR, GROUP	1	—			
	1467V7909	CABLE, (F1467), GROUP (Pre-Mod. 906)	1	—			
	8458V7909	CABLE, (F1467), No. 2 H.D.C. TO No. 2 ALTERNATOR, GROUP	1	—			
	1465V7909	CABLE, (F1465), GROUP (Pre-Mod. 906)	1	—			
	8459V7909	CABLE, (F1465), 23J TO No. 2 ALTERNATOR, GROUP	1	—			
	481V7909	CABLE, (F481), GROUP (Pre-Mod. 906)	1	—			MR
	8460V7909	CABLE, (F481), IGNITION BREAK TO No. 2 L.H. H.E. UNIT, GROUP	1	—			
	8769V7909	CABLE, (F2018), GROUP (Pre-Mod. 906)	1	—			
	8703V7909	CABLE, (F2018), BULKHEAD PLUG 743 TO INTER BULKHEAD, GROUP (Mod. 1284)	1	—			
	9059V7909	CABLE, (F166), DETECTOR SWITCH 4R TO 5B, GROUP (Pre-Mod. 2054)	1	—			
	9723V7909	CABLE, (F166), GROUP (Mod. 2054)	1	—			
	9060V7909	CABLE, (F168), DETECTOR SWITCH 6R TO 7B, GROUP (Pre-Mod. 2054)	1	—			
	9725V7909	CABLE, (F168), GROUP (Mod. 2054)	1	—			
	9061V7909	CABLE, (F169), DETECTOR SWITCH 7R TO 8B, GROUP (Pre-Mod. 2054)	1	—			
	9726V7909	CABLE, (F169), GROUP (Mod. 2054)	1	—			
	9074V7909	CABLE, (F165) AT DETECTOR SWITCH 8R, GROUP (Pre-Mod. 2054)	1	—			
	9722V7909	CABLE, (F165), GROUP (Mod. 2054)	1	—			
	9078V7909	CABLE, (F167), DETECTOR SWITCHES 5R TO 6B, GROUP (Pre-Mod. 2054)	1	—			
	9724V7909	CABLE, (F167), GROUP (Mod. 2054)	1	—			
	9062V7909	CABLE, (F170), AT DETECTOR SWITCH 4B, GROUP (Pre-Mod. 2054)	1	—			
	9727V7909	CABLE, (F170), GROUP (Mod. 2054)	1	—			
	9223V7909	CABLE, (F2018), GROUP (Pre-Mod. 906)	1	—			
9523V7909	CABLE, (F2018), GROUP	1	—				
3149V7909	CABLE, (F3149), GROUP (Pre-Mod. 906)	1	—				
9612V7909	CABLE, (F3149), GROUP (Mod. 1856)	1	—				
2018V9114	CABLE, (F2018), BULKHEAD PLUG 743 TO C.S.U. THERMOMETER, GROUP (Mod. 1284)	1	—	MR			
7178V9114	CABLE, (F1463), No. 2 ALTERNATOR AND C.S.D. TO FIREWALL PLUG 572, GROUP	1	—	MR			

VULCAN Mk. 2

ELECTRICAL INSTALLATION

Page FH. 7

ENGINE BAYS

Ref. No.	Part No.	Description	No. off	Matl. Spec.	Cl. of St.	Plate and Illust'n No.
					M.R.	
			1	2	3	4
5X/6200370	1V5650	ELECTRICAL INSTALLATION No. 3 ENGINE BAY, E.C.U.B.O.L. 301 AND E.C.U. 200 INSTALLATION (3V9194) (Pre-Mod. 906) (3V10787) (Mod. 906) Spares for:— Block, terminal (Mod. 1320)	2	—	C	FH2/46
		BOX, TRANSFORMER, MERZ-PRICE, 24J	—	—		
	11V7453	Spares for:— BOX, TRANSFORMER, GROUP	1	—	MR	FH2/47
1432832	7V7452	Spares for:— PILLAR, GROUP	6	—	C	FH2/48
		Consisting of:—				
	7aV7452	Stud	1	—		
	7bV7452	Base	1	—		
28P/9429654	SP28/E4	Pin, taper, 1/16" dia.	1	—	C	
	5V7863	Bus-Bar (Make from 30B/961877)	1	—	LM	FH2/49
	6V7863	Bus-Bar (Make from 30B/961877)	3	—	LM	FH2/50
	1V8133	LOOM, CABLE, GROUP (Pre-Mod. 712)	1	—		
1505162	1V9936	LOOM, CABLE, GROUP (Mod. 712)	1	—	C	
	13V7862	Plate, packing	3	—		FH2/51
5UB/4342773	ENGLISH ELEC.	Transformer, current (Mod. 712)	3	—	B	FH2/52
6116191	AS8671/27	Capping, 27" long (Pre-Mod. 906)	1	—	C	
	AS8674/13	Capping, 13" long (Pre-Mod. 906)	1	—		
1510765	AS8674/16	Capping, 16" long (Pre-Mod. 906)	1	—	C	
	AS8674/19	Capping, 19" long	1	—		FH2/53
	AS8674/26	Capping, 26" long (Pre-Mod. 906)	1	—		
	AS8674/27	Capping, 27" long (Pre-Mod. 906)	1	—		
	8V8993	Clamp, half	4	—		
	AS4799	Clip, spring	3	—	MR	FH2/54
	AS4825	Clip, spring (9 off Pre-Mod. 906)	11	—	MR	FH2/55
	K.L.G.					
	B4823	Connector, type BBH/1	2	—	MR	FH2/56
	13SS4622	Duct, cable, 13" long (Pre-Mod. 906)	1	—		
7684	16SS4622	Duct, cable, 16" long (Pre-Mod. 906)	1	—	C	
	19SS4622	Duct, cable, 19" long	1	—		FH2/57
7686	26SS4622	Duct, cable, 26" long (Pre-Mod. 906)	1	—	C	
7687	27SS4622	Duct, cable, 27" long (Pre-Mod. 906)	1	—	C	
	19SS4623	Duct, cable, 19" long	1	—	MR	FH2/58
	27SS4623	Duct, cable, 27" long (Pre Mod. 906)	1	—	MR	
	12V8993	Fairlead	4	—		
	K.L.G.					
	B606	Locknut, for connector	4	—	MR	FH2/59
5X/9462952	HC/302	Lug	5	—	C	
5X/9462745	HC/304	Lug	5	—	C	
5K/9712745	—	Sleeve, insulating	7	—	C	
5K/6428047	—	Sleeve, insulating	2	—	C	

VULCAN Mk. 2						
Page FH. 8		ELECTRICAL INSTALLATION				
ENGINE BAYS						
Ref. No.	Part No.	Description	No. off	Matl. Spec.	Cl. of St.	Plate and Illust'n No.
					M.R.	
		1 2 3 4				
		ELECTRICAL INSTALLATION No. 3 ENGINE BAY, E.C.U. B.O.L.301 AND E.C.U.200 INSTALLATION (3V9194) (Pre-Mod. 906) (3V10787) (Mod. 906) (Cont'd.)				
5X/4491488	15V5650	Socket, single (Mod. 1320)	7	—	C	FH2/60
5X/9709497	—	Splice, inline	3	—	C	
5X/9465014	—	Splice, inline	6	—	C	
	34V10787	Stowage, earthing	2	—	MR	FH2/61
	1SS4052	Terminal, earth	2	—	MR	FH2/62
	7V9194	Tube, conduit	2	L56		FH2/63
37A/4387755	NB253					
37A/4387626	C10TS3	Unit, H.E. ignition	2	—	A	FH2/64
2995-99-						
4382371	NB6103	Unit, H.E. ignition (Mod. 1320)	1	—	A	FH2/65
37F/4382745	D15201	Unit, time delay (Mod. 1320)	1	—	A	FH2/66
		WIRING, No. 3 ENGINE BAY	—	—		
		Spares for:—				
	864V7909	CABLE, (F864), ROCKET RELEASE UNIT	1	—		
	865V7909	TO BOMB BAY, GROUP				
	1358V7909	CABLE, (F865), COCKING TEST PLUG,	1	—		
	1359V7909	STARBOARD TO BOMB BAY, GROUP				
	2013V7909	CABLE, (F1358), No. 4 CON. TO FIREWALL ...	1	—		
	2014V7909	BULKHEAD, GROUP				
	3508V7909	CABLE, (F1359), No. 4 CON. TO FIREWALL ...	1	—		
	3509V7909	BULKHEAD, GROUP				
	7489V7909	CABLE, (F2013), IGNITION, BREAK, LH,	1	—	MR	
	7809V7909	IGNITOR, GROUP				
	12907	CABLE, (F2014), IGNITION BREAK TO RH,	1	—	MR	
	3728V7909	IGNITOR, GROUP				
	3733V7909	CABLE, (F3508), IGNITION BREAK TO	1	—	MR	
	7809V7909	No. 3 H.E. UNIT, GROUP (Mod. 1320)				
	1433494	CABLE, (F3509), No. 3 H.E. UNIT TO	1	—	C	
	8462V7909	TB.1670, GROUP (Mod. 1320)				
	1387V7909	CABLE, (F3728), INTER BULKHEAD TO	1	—		
	8436V7909	TB.1710, GROUP (Mod. 1615)				
	7333V7909	CABLE, (F3733), AIR SOL. VALVE TO	1	—		
	8464V7909	TB.1710, GROUP (Mod. 1615)				
		CABLE, (F1351), PLUG 573 TO PLUG 575,	1	—		
		GROUP				
		CABLE, (F863), SNATCH PLUG,	1	—		
		STARBOARD TO TB's 725, 726				
		AND 727, GROUP				
	504V7909	CABLE, (F504), GROUP (Pre-Mod. 906)	1	—	MR	
	8462V7909	CABLE, (F504), IGNITION BREAK TO No.	1	—	MR	
		3 RH, H.E. UNIT, GROUP				
	1387V7909	CABLE, (F1387), GROUP (Pre-Mod. 906)	1	—		
	8436V7909	CABLE, (F1387), H.D. BREAK TO No. 3	1	—		
		ALTERNATOR, GROUP				
	7333V7909	CABLE, (F1382), GROUP (Pre-Mod. 906)	1	—		
	8464V7909	CABLE, (F1382), ENGINE PLUG 576 TO 24J ...	1	—	C	
		C.S.D. AND No. 3 ALTERNATOR, GROUP				

VULCAN Mk. 2

ELECTRICAL INSTALLATION

Page FH. 9

ENGINE BAYS

Ref. No.	Part No.	Description	No. off	Matl. Spec.	Cl. of St.	Plate and Illust'n No.
					M.R.	
		1 2 3 4				
	1384V7909	CABLE, (F1384), GROUP (Pre-Mod. 906)	1	—		
	8465V7909	CABLE, (F1384), 24J TO No. 3	1	—		
	1385V7909	CABLE, (F1385), GROUP (Pre-Mod. 906)	1	—		
	8466V7909	CABLE, (F1385), 24J TO EARTH, GROUP	1	—		
	1383V7909	CABLE, (F1383), GROUP (Pre-Mod. 906)	1	—		
	8467V7909	CABLE, (F1383), No. 3 ALTERNATOR TO	1	—		
	503V7909	EARTH, GROUP				
12757	503V7909	CABLE, (F503), GROUP (Pre-Mod. 906)	1	—	C	
	8468V7909	CABLE, (F503), IGNITION BREAK TO L.H.	1	—	MR	
	8468V7909	H.E. UNIT, GROUP				
12791	8550V7909	CABLE, (F652), GROUP (Pre-Mod. 906)	1	—	C	
	8469V7909	CABLE, (F652), GROUP (Mod. 1745)	1	—		
	443V7909	CABLE, (F443), GROUP (Pre-Mod. 906)	1	—		
22720	8470V7909	CABLE, (F443), BULKHEAD PLUG 548	1	—	C	
	8470V7909	TO ENGINE BREAK, GROUP				
12792	986V7909	CABLE, (F986), GROUP (Pre-Mod. 906)	1	—	C	
	8486V7909	CABLE, (F986), ENGINE PLUG 740 TO	1	—		
	8486V7909	ENGINE BREAK, GROUP				
	2019V7909	CABLE, (F2019), GROUP (Pre-Mod. 906)	1	—		
1510320	8704V7909	CABLE, (F2019), BULKHEAD PLUG 744	1	—	C	
	8704V7909	TO INTER BULKHEAD, GROUP (Mod. 1284)				
	9063V7909	CABLE, (F177), DETECTOR SWITCHES 4R	1	—		
	9063V7909	TO 5B, GROUP (Pre-Mod. 2054)				
	9729V7909	CABLE, (F177), GROUP (Mod. 2054)	1	—		
	9064V7909	CABLE, (F179), DETECTOR SWITCHES, R	1	—		
	9064V7909	TO 7B, GROUP (Pre-Mod. 2054)				
	9731V7909	CABLE, (F1179), GROUP (Mod. 2054)	1	—		
	9065V7909	CABLE, (F180), DETECTOR SWITCHES 7R	1	—		
	9065V7909	TO 8B, GROUP (Pre-Mod. 2054)				
	9732V7909	CABLE, (F180), GROUP (Mod. 2054)	1	—		
	9066V7909	CABLE, (F181), AT DETECTOR SWITCH,	1	—		
	9066V7909	4B, GROUP (Pre-Mod. 2054)				
	9733V7909	CABLE, (F181), GROUP (Mod. 2054)	1	—		
	9075V7909	CABLE, (F176), AT DETECTOR SWITCH,	1	—		
	9075V7909	8R, GROUP (Pre-Mod. 2054)				
	9728V7909	CABLE, (F176), GROUP (Mod. 2054)	1	—		

ELECTRICAL INSTALLATION

ENGINE BAYS

Ref. No.	Part No.	Description	No. off	Matl. Spec.	Cl. of St.	Plate and Illust'n No.
					M.R.	
		1 2 3 4				
	9077V7909	CABLE, (F178), DETECTOR SWITCHES 5R TO 6B, GROUP (Pre-Mod. 2054)	1	—	MR	
1505208	9730V7909	CABLE, (F178), GROUP (Mod. 2954)	1	—	C	
	9524V7909	CABLE, (F2019), GROUP	1	—		
	3150V7909	CABLE, (F3150), GROUP (Pre-Mod. 906)	1	—		
	9614V7909	CABLE, (F3150), GROUP (Mod. 1856)	1	—		
	2019V9114	CABLE, (F2019), BULKHEAD PLUG 744 TO C.S.D.U. THERMOMETER, GROUP (Mod. 1284)	1	—	MR	
13772	7180V9114	CABLE, (F1382), No. 3 ALTERNATOR AND C.S.D. TO FIREWALL BREAK, GROUP	1	—	C	
		ELECTRICAL INSTALLATION NO. 4 ENGINE BAY E.C.U. B.O.L.301 AND E.C.U. 200 INSTALLATION, (4V9194) (Pre-Mod. 906) (4V10787) (Mod. 906) Spares for:—	—	—		
5X/6200370	1V5650	Block, terminal (Mod. 1320)	2	—	C	FH2/67
		BOX TRANSFORMER, MERZ-PRICE 25J (4V7863) (Pre-Mod. 906) (1V10723) (Mod. 906) Spares for:—	—	—		
	2V10723	BOX, TRANSFORMER, GROUP	1	—		FH2/68
1432832	7V7452	PILLAR, GROUP Consisting of:—	6	—	C	FH2/69
	7aV7452	Stud	1	—		
	7bV7452	Base	1	—		
28P/9429654	SP28/E4	Pin, taper, 1/16" dia.	1	—	C	
	5V7863	Bus-Bar	1	—		FH2/70
	6V7863	Bus-Bar	3	—		FH2/71
	1V9936	LOOM, CABLE, GROUP	1	—		
	13V7862	Plate, packing	3	—		FH2/72
5UB/4342772	ENGLISH ELEC. —	Transformer, current	3	—	A	FH2/73
	AS8671/19	Capping, 19" long	1	—		FH2/74
	AS8674/11	Capping, 11" long (Pre-Mod. 906)	1	—		
	AS8674/25	Capping, 25" long (Pre-Mod. 906)	1	—		
	AS8674/44	Capping, 44" long (Pre-Mod. 906)	1	—		
	AS4825	Clip, spring (Pre-Mod. 906)	10	—	MR	
	AS4799	Clip, spring	3	—	MR	
	1V5969	CONNECTOR, HEAVY DUTY, GROUP	1	—	MR	FH2/75
	K.L.G.					
	B4823	Connector, type BBH/1	2	—	MR	FH2/76
4697	29V5889	Cover, heavy duty connector	2	BS972	C	FH2/77

VULCAN Mk. 2

ELECTRICAL INSTALLATION

Page FH. 11

ENGINE BAYS

Ref. No.	Part No.	Description	No. off	Matl. Spec.	Cl. of St.	Plate and Illust'n No.
					M.R.	
		1 2 3 4				
		ELECTRICAL INSTALLATION No. 4 ENGINE BAY, E.C.U. B.O.L.301 AND E.C.U.200 INSTALLATION (4V9194) (Pre-Mod. 906) (4V10787) (Mod. 906) (Cont'd.)				
7681	11SS4622	Duct, cable 11" long (Pre-Mod. 906)	1	—	C	
7682	13SS4622	Duct, cable 13" long (Pre-Mod. 906)	1	—	C	
	25SS4622	Duct, cable 25" long (Pre-Mod. 906)	1	—		
22713	44SS4622	Duct, cable 44" long (Pre-Mod. 906)	1	—	C	
	19SS4623	Duct, cable 19" long	1	—	MR	FH2/78
	K.L.G.					
	B606	Locknut, for connector	4	—	MR	FH2/79
5X/9462952	HC/302	Lug (Mod. 1469)	5	—	C	
5X/9462745	HC/304	Lug (Mod. 1469)	5	—	C	
5K/6428047	—	Sleeve, insulating	7	—	C	
5K/9712745	—	Sleeve, insulating	7	—	C	
5X/4491488	15V5650	Socket, connector (Mod. 1320)	7	—	C	FH2/80
5X/9709497	—	Splice, inline	3	—	C	
5X/9465014	—	Splice, inline	6	—	C	
	34V10787	Stowage, earthing	1	—	MR	FH2/81
	1SS4052	Terminal, earth	2	—	MR	FH2/82
	7V9194	Tube, conduit	2	L56		FH2/83
37A/4387755	NB253 or	Unit, H.E. ignition	2	—	A	FH2/84
37A/4387626	C10TS3					
2995-99-						
4382371	NB6103	Unit, H.E. ignition (Mod. 1320)	1	—	A	FH2/85
37F/4382745	D15201	Unit, time delay (Mod. 1320)	1	—	A	FH2/86
		WIRING No. 4 ENGINE BAY	—	—		
		Spares for:—				
	2015V7909	CABLE, (F2015), IGNITION BREAK TO L.H.	1	—	MR	
	2016V7909	IGNITOR, GROUP				
	3510V7909	CABLE, (F2016), IGNITION BREAK TO R.H. ...	1	—	MR	
	3511V7909	IGNITOR, GROUP				
	3729V7909	CABLE, (F3510), IGNITION BREAK TO No. 4 ..	1	—	MR	
	3734V7909	H.E. UNIT, GROUP (Mod. 1320)				
	7318V7909	CABLE, (F3511), No. 4 H.E. UNIT TO	1	—	MR	
	8488V7909	TB.1671, GROUP (Mod. 1320)				
	13588	CABLE, (F3729), INTER BULKHEAD TO	1	—		
		TB.1711, GROUP				
		CABLE, (F3734), AIR SOL. VALVE TO	1	—	MR	
		TB.1711, GROUP (Mod. 1615)				
		CABLE, (F502), GROUP (Pre-Mod. 906)	1	—	MR	
		CABLE, (F502), IGNITION BREAK TO No. 4 ...	1	—	MR	
		H.E. UNIT, GROUP				
		CABLE, (F1357), GROUP (Pre-Mod. 906)	1	—	C	
		CABLE, (F1357), No. 4 ALTERNATOR TO	1	—	MR	
		ENGINE H.D.C, GROUP				

ELECTRICAL INSTALLATION

ENGINE BAYS

Ref. No.	Part No.	Description	No. off	Matl. Spec.	Cl. of St.	Plate and Illust'n No.
					M.R.	
13897	1354V7909	CABLE, (F1354), GROUP (Pre-Mod. 906)	1	—		
	8490V7909	CABLE, (F1354), No. 4 ALTERNATOR TO 25J, GROUP	1	—	MR	
	1352V7909	CABLE, (F1352), GROUP (Pre-Mod. 906)	1	—	MR	
	8491V7909	CABLE, (F1352), PLUG 575 TO 25J C.S.D. AND ALTERNATOR, GROUP	1	—	C	
1510706	1355V7909	CABLE, (F1355), GROUP (Pre-Mod. 906)	1	—		
	8492V7909	CABLE, (F1355), 25J TO EARTH, GROUP	1	—		
	1353V7909	CABLE, (F1353), GROUP (Pre-Mod. 906)	1	—		
	8493V7909	CABLE, (F1353), No. 4 ALTERNATOR TO EARTH, GROUP	1	—		
	7317V7909	CABLE, (F501), GROUP (Pre-Mod. 906)	1	—	C	
	8494V7909	CABLE, (F501), IGNITION BREAK TO No. 4 L.H. H.E. UNIT, GROUP	1	—	MR	
	444V7909	CABLE, (F444), GROUP (Pre-Mod. 906)	1	—		
	8496V7909	CABLE, (F444), BULKHEAD PLUG 549 TO ENGINE BREAK, GROUP	1	—	MR	
	8771V7909	CABLE, (F2020), GROUP (Pre-Mod. 906)	1	—		
	8701V7909	CABLE, (F2020), BULKHEAD PLUG 745 TO INTER BULKHEAD, GROUP (Mod. 1284)	1	—		
	8495V7909	CABLE, (F639), BULKHEAD PLUG 257 TO ENGINE BREAK AND INTER BULKHEAD, GROUP (Mod. 1745)	1	—		
	3151V7909	CABLE, (F3151), GROUP (Pre-Mod. 906)	1	—		
	9016V7909	CABLE, (F3151), GROUP (Mod. 1856)	1	—		
	9067V7909	CABLE, (F188), DETECTOR SWITCHES 5R TO 6B, GROUP (Pre-Mod. 2054)	1	—		
	9735V7909	CABLE, (F188), GROUP (Mod. 2054)	1	—		
	9068V7909	CABLE, (F190), DETECTOR SWITCHES 6R TO 7B, GROUP (Pre-Mod. 2054)	1	—		
9737V7909	CABLE, (F190), GROUP (Mod. 2054)	1	—			
9069V7909	CABLE, (F191), DETECTOR SWITCHES 7R TO 8B, GROUP (Pre-Mod. 2054)	1	—			
9738V7909	CABLE, (F191), GROUP (Mod. 2054)	1	—			
9070V7909	CABLE, (F192), AT DETECTOR SWITCH 4B, GROUP (Pre-Mod. 2054)	1	—			
9739V7909	CABLE, (F192), GROUP (Mod. 2054)	1	—			

ELECTRICAL INSTALLATION
ENGINE BAYS

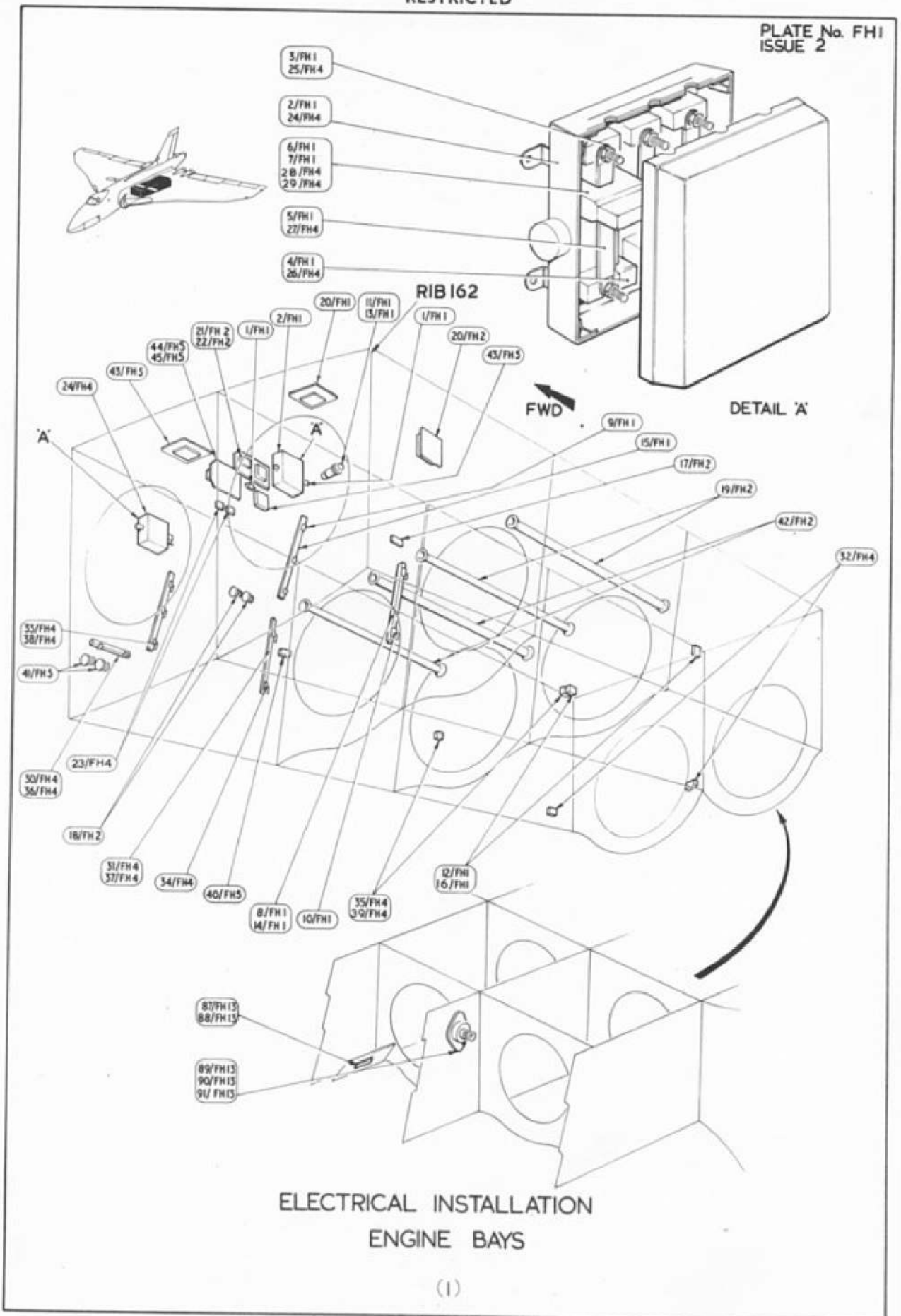
Ref. No.	Part No.	Description	No. off	Matl. Spec.	Cl. of	Plate and Illust'n No.
					St. M.R.	
		1 2 3 4				
	9071V7909	CABLE, (F189), DETECTOR SWITCHES 5R ... TO 6B, GROUP (Pre-Mod. 2054)	1	—		
	9736V7909	CABLE, (F189), GROUP (Mod. 2054)	1	—		
	9076V7909	CABLE, (F187), AT DETECTOR SWITCH 8R, . GROUP (Pre-Mod. 2054)	1	—		
	9734V7909	CABLE, (F187), GROUP (Mod. 2954)	1	—		
	9525V7909	CABLE, (F2020), GROUP	1	—		
	2020V9114	CABLE, (F2020), BULKHEAD PLUG 745 TO .. C.S.D.U. THERMOMETER, GROUP (Mod. 1284)	1	—	MR	
	7179V9114	CABLE, (F1352), No. 4 ALTERNATOR AND .. C.S.D. TO FIREWALL BREAK, GROUP	1	—	MR	
		WIRING AFT OF REAR ENGINE BULKHEAD, PORT AND STARBOARD, E.C.U. B.O.L. 301 AND E.C.U. 200 INSTALLATION (5 & 6V9194) (Pre-Mod. 906) (5 & 6V10787) (Mod. 906) Spares for:—				
	38V6357	Base, clamp	1	BSS972		FH1/87 FH2/87
	34V6357	Clamp	1	L72		FH1/88 FH2/88
	33V6357	Dishing, plug stowage	1	L59		FH1/89 FH2/89
	37V/6357	Insulator	1	Fibreglass		FH1/90 FH2/90
	PLESSEY CZ48995	Plug	1	—		FH1/91 FH2/91

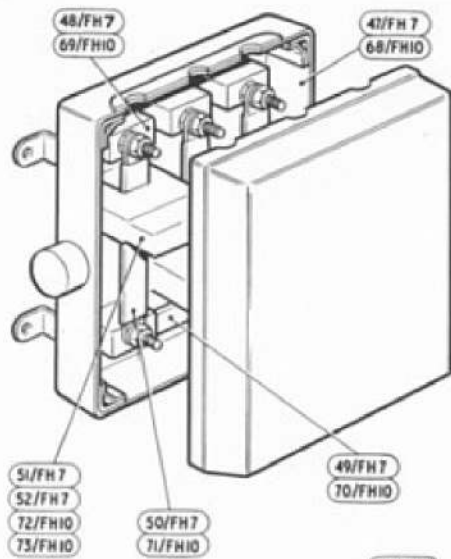
VULCAN Mk. 2

ELECTRICAL INSTALLATION
SUMMARY OF STANDARD ITEMS

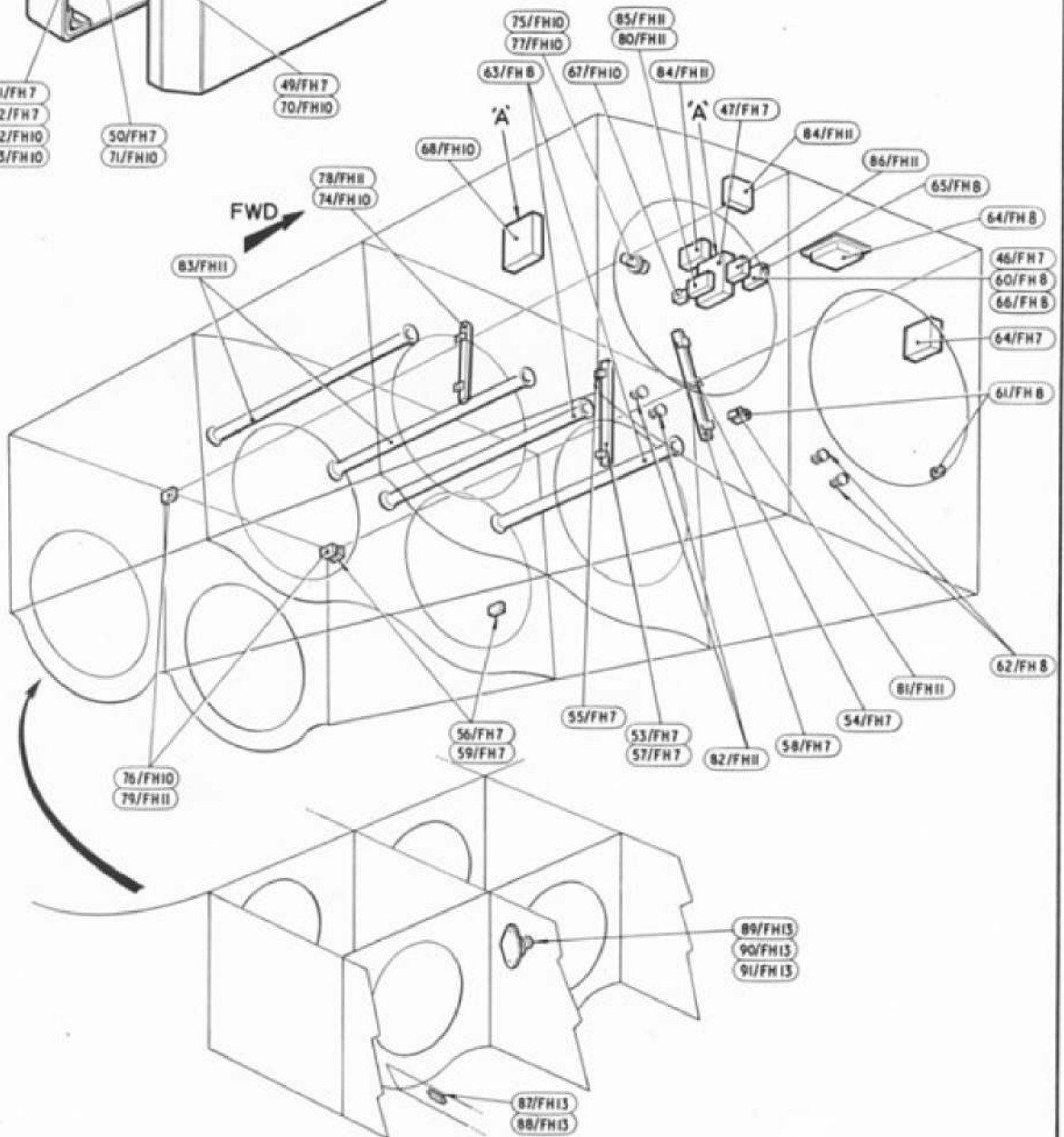
Page FH. 15

Stores Ref.		No. off	Stores Ref.		No. off	Stores Ref.		No. off
Section	Ref. No.		Section	Ref. No.		Section	Ref. No.	
28D	1010658	264	28S	1200044	14	28W	9419446	2
28D	1008149	14	28S	9419437	2	28W	9419401	105
28D	9140638	8	28S	9156769	4	28W	9419454	48
28D	1011006	3	28S	1201448	4	28W	9418920	5
28D	1009984	6	28S	1200034	32	28W	9132080	24
28D	9435711	8	28S	1200036	5	28W	9419402	16
28D	9140639	9	28S	1200033	10	28W	9418921	8
28D	1010029	1	28S	9437020	4	28W	9419474	2
28D	9015170	3	28S	9131095	4	28W	9128182	16
28D	1007972	4	28S	9419411	2	28W	1206041	8
28D	9436920	109	28S	1200066	8			
28D	9133011	5	28S	9992521	5			
28D	9133012	2						
28D	7002428	5						
28D	1011019	5						
28D	9140647	1						
28D	1011244	4						
28D	1011246	4						
28D	1011247	24						
28D	7002413	1						
28D	1007973	9						
28M	1010992	6						
28M	10288	29						
28M	10327	106						
28M	10328	36						





DETAIL 'A'



ELECTRICAL INSTALLATION
ENGINE BAYS

This file was downloaded
from the RTFM Library.

Link: www.scottbouch.com/rtfm

Please see site for usage terms,
and more aircraft documents.

