

VULCAN Mk. 2

EQUIPMENT AIRCRAFT

Page GA.1

A.A.P.P. INSTALLATION

Ref. No.	Part No.	Description	No. off	Mati. Spec.	Cl. of St.	Plate and Illust'n No.
					M.R.	
		1 2 3 4				
		INSTALLATION, AUXILIARY AIRBORNE POWER PLANT, INNER MAIN PLANE, STARBOARD (50F10364) (Mod. 649) Spares for:— A.A.P.P. FUEL SYSTEM, AFT OF REAR U/C BULKHEAD (SP3292) Spares for:—				
7124	15F9691	BRACKET, VALVE MOUNTING REAR, ..... GROUP	1	—	MR	GA1/1
	16F9691	BRACKET, VALVE MOUNTING FORWARD, . . . . . GROUP	1	—	C	GA1/2
	16P3292	Fairlead, half, A.A.P.P. bulkhead .....	2	BSS972		GA1/3
	15P3002	Hose, P.R., 3/4" i/d x 1-1/8" o/d x 2-1/4" .. long	2	BSS6F.7		GA1/4
	30P3292	Hose, impervex, 1/2" i/d x 3.0" long, Type 1	2	BSS67		GA1/5
		MOUNTING, FUEL TANK, AFT A.A.P.P. .... BULKHEAD, INBOARD U/C RIB (F10372) Spares for:—				GA1/6
7152	1F10437	SUPPORT, BOTTOM, GROUP .....	1	—	C	GA1/7
7153	1F10438	SUPPORT, TOP, GROUP .....	1	—	C	GA1/8
		Spares for:—				
20810	8F10437	Block, hinge .....	2	DTD130A		
7155	7F10437	Pin, hinge block .....	2	S1		
28U/4052	SP8/Y2	Rod, tension, 2 BA .....	1	—	C	
	AS242/9-1/2	Strap .....	2	—	MR	
	19F10437	Strip, 3/16" x 1" x 8" long .....	2	Neoprene SH50/60	MR	
	20F10437	Strip, extruded bottom 21" long .....	1	Neoprene SH50/60	MR	
	3F10438	Strip, top 3/16" x 1" x 21" long .....	—	Neoprene SH50/60	MR	
28U/13999	AS2427	Trunnion, R.H. thread .....	1	M/S	C	
28U/13997	AS2428	Trunnion, L.H. thread .....	1	M/S	C	
7113	4P3292	Pipe, from rear U/C, bulkhead to fuel tank intermediate bulkhead, 3/8" o/d x 20G x 5' 6" long approx.	1	L56	C	GA1/9
	5P3292	Pipe, from fuel filter to aero valve 3/8" o/d x 20G x 5' 3" long approx.	1	T55	MR	GA1/10
	6P3292	Pipe, vent, from joint at outboard U/C rib to fuel tank intermediate bulkhead, 3/4" o/d x 22G x 1' 8" long approx.	1	L56	MR	GA1/11
	7P3292	Pipe, from union to fuel tank, 3/8 o/d x 20G x 1' 3" long approx.	1	L54 & L59	MR	GA1/12
7119	8P3292	Pipe, vent, from union to joint at fuel tank 3/8" o/d x 22G x 1' 3" long approx.	1	L56	C	GA1/13
	19P3292	Pipe, drain, from fuel tank to drip tray, ..... 1/4" o/d x 22G x 12" long approx. (Pre-Mod. 1300)	1	L56		
	33P3292	Pipe, gland, 1/4" o/d x 22G x 14" long ..... approx. (Mod. 1300)	1	—	MR	GA1/14
	20P3292	Pipe, flexible, from aero valve to fuel tank .. (Pre Mod. 2456)	1	—	MR	GA1/15
22904	35P3292	Pipe, flexible, flylite (Mod. 2456) .....	1	—	C	

## EQUIPMENT AIRCRAFT

## A.A.P.P. INSTALLATION

Ref. No.	Part No.	Description	No. off	Mati. Spec.	Cl. of St.	Plate and Illust'n No.
					M.R.	
		1 2 3 4				
		A.A.P.P. FUEL SYSTEM AFT OF REAR U/C BULKHEAD (SP3292) (Cont'd)				
7123	21P3292	Pipe flexible, from fuel filter to A.A.P.P. .... (Pre-Mod. 2456)	1	—	B	GA1/16
22905	36P3292	Pipe, flexible, flylite, (Mod. 2456) .....	1	—	C	GA1/17
	23P3292	Pipe, drain, from A.A.P.P. to skin panel .... (Mod. 731) 1/2" o/d x 22G x 15" long approx.	1	L56	MR	
	25P3292	Pipe, drain, from A.P.U. bulkhead to drip tray, 3/16" o/d x 22G x 18" long approx. (Pre-Mod. 1277)	1	DTD743		
10911	31P3292	Pipe, drain, from A.P.U. bulkhead to drip tray, 1/4" o/d x 22G x 18" long approx. (Mod. 1277) (Pre-Mod. 1300)	1	DTD743	C	
13665	34P3292	PIPE, DRAIN, GROUP (Mod. 1300) .....	1	—	C	GA1/18
	26P3292	Pipe, drain, from A.P.U. to bulkhead, 3/16" o/d x 22G x 30" long approx. (Pre-Mod. 1277)	1	DTD743		
10912	32P3292	Pipe, drain, from A.P.U. to bulkhead, 1/4" o/d x 22G x 30" long approx. (Mod. 1277)	1	DTD743	C	GA1/19
7100	28F9809	TANK, FUEL, GROUP .....	1	—	A	
	SAUNDERS VALVE CO. 103/AB02/R34	Valve, aero, 3/8" B.S.P. ....	1	—		GA1/20
	—	AUXILIARY AIRBORNE POWER PLANT, GROUP	1	—		GA1/21
		Consisting of:—				
5UA/4357543	—	Alternator, Rotax .....	1	—	A	
5CZ/4661137	—	Block, thermocouple .....	1	—	B	
5CZ/1053795	—	Block, terminal .....	1	—	B	
27N/100	—	Bottle, methylbromide .....	1	—	A	
5CZ/1053794	—	Block, junction .....	2	—	B	
27N/4526547	—	Bracket (Alternative 27N/N87) .....	1	—	B	
12K/1316	—	Cartridge (Mod. 1346) .....	1	—	B	
5CZ/4335581	—	Detector, fire .....	4	—	A	
6D/1502	—	Nipple .....	2	—	C	
6D/487	—	Nut, union .....	2	—	C	
	ROVER CO. 420900	Plant, power .....	1	—		
5X/6001	—	Plug, single .....	2	—	B	
5X/9512504	—	Plug, bulkhead .....	1	—	B	
5X/6037	—	Plug, bulkhead .....	3	—	B	
6A/4332846	—	Switch, fuel pressure warning .....	1	—	A	
		(Note:—Items 5UA7017, 27N/152 and 27N/115 supplied by A.V. Roe to ROVER GAS TURBINES LTD. for fitment)				
	KING A/C Co. C4205/8-1/4B	Clamp, pipe Mk. 3 .....	1	—	MR	GA1/22

VULCAN Mk. 2

## EQUIPMENT AIRCRAFT

Page GA. 3

## A.A.P.P. INSTALLATION

Ref. No.	Part No.	Description	No. off	Matl. Spec.	Cl. of St.	Plate and Illust'n No.
					M.R.	
		1 2 3 4				
		HYDRAULIC SERVICES FOR A.A.P.P. SCOOP (1Q2247)				
		Spares for:-				
26FP/2721	2SS3859	Clip .....	14	—	C	GA1/23
26FP/13457	4SS3859	Clip .....	2	—	C	GA1/24
8681	94Q2101	PIPE, FEED, 1/4" o/d x 22G x 96" LONG ... FROM ADAPTOR FORWARD FACE U/C BULKHEAD, GROUP (Pre-Mod. 2236)	1	DTD323	C	
1505267	294Q2101	PIPE, FEED, 1/4" o/d x 22G x 96" LONG ... FROM ADAPTOR FORWARD FACE U/C BULKHEAD, GROUP (Mod. 2236)	1	DTD5016		GA1/25
8682	95Q2101	PIPE, FEED, 1/4" o/d x 22G x 24" LONG ... ADAPTOR TO PRESSURE REDUCING VALVE, AFT REAR U/C BULKHEAD, GROUP	1	DTD323	C	GA1/26
8683	96Q2101	PIPE, FEED, 3/16" o/d x 22G x 18" ..... LONG TEE-PIECE TO PRESSURE REDUCING VALVE, AFT REAR U/C BULKHEAD, GROUP	1	L56	C	GA1/27
8684	97Q2101	PIPE, RETURN, 1/4" o/d x 22G x 13" ..... LONG ADAPTOR TO TEE-PIECE, AFT REAR U/C BULKHEAD, GROUP	1	L56	C	GA1/28
	98Q2101	PIPE, RETURN, 1/4" o/d x 22G x 24" ..... LONG TEE-PIECE TO SELECTOR VALVE, AFT REAR BULKHEAD, GROUP	1	L56		GA1/29
8686	99Q2101	PIPE, RETURN, 1/4" o/d x 22G x 18" ..... LONG SELECTOR VALVE TO SCOOP HYDRAULIC JACK, AFT REAR U/C BULKHEAD, GROUP	1	L56	C	GA1/30
8687	100Q2101	PIPE, FEED, 1/4" o/d x 22G x 12" ..... LONG PRESSURE REDUCING VALVE TO SELECTOR VALVE, AFT REAR U/C BULKHEAD, GROUP	1	DTD323	C	GA1/31
8688	101Q2101	PIPE, FEED, 1/4" o/d x 22G x 10" LONG ... SELECTOR VALVE TO SCOOP HYDRAULIC JACK, AFT REAR U/C BULKHEAD, GROUP	1	DTD323	C	GA1/32

Ref. No.	Part No.	Description	No. off	Matl. Spec.	Cl. of	Plate and Illust'n No.
					St. M.R.	
		1 2 3 4				
		HYDRAULIC SERVICES FOR A.A.P.P. SCOOP (1Q2247)				
9302	137Q2101	PIPE, RETURN, 3/8" o/d x 20G x 60" ..... LONG TEE-PIECE TO ADAPTOR, RIB 162.5 FORWARD REAR U/C BULKHEAD, GROUP (Pre-Mod. 2236)	1	L56	C	
	289Q2101	PIPE, RETURN, 3/8" o/d x 20G x 60" ..... LONG TEE-PIECE TO ADAPTOR, RIB 162.5, FORWARD REAR U/C BULKHEAD, GROUP (Mod. 2236)	1	DTD5016	MR	GA1/33
9303	138Q2101	PIPE, 3/8" o/d x 22G x 12" LONG ..... TEE-PIECE TO FILTER, FORWARD REAR U/C BULKHEAD, GROUP (Pre-Mod. 2236)	1	L56	C	
	282Q2101	PIPE, 3/8" o/d x 22G x 12" LONG ..... TEE-PIECE TO FILTER, FORWARD REAR U/C BULKHEAD, GROUP (Mod. 2236)	1	DTD5016	MR	GA1/34
9304	139Q2101	PIPE, RETURN, 1/4" o/d x 22G x 66" ..... LONG TEE-PIECE TO ADAPTOR, FORWARD FACE, REAR U/C BULKHEAD (Pre-Mod. 2236)	1	L56	C	
	295Q2101	PIPE, RETURN, 1/4" o/d x 22G x 66" ..... LONG TEE-PIECE TO ADAPTOR, FORWARD FACE, REAR U/C BULKHEAD (Mod. 2236)	1	DTD5016	MR	GA1/35
	140Q2101	PIPE, 3/8" o/d x 20G FILTER TO ..... CHARGING VALVE, GROUP (Pre-Mod. 2236)	1	L56	C	
1505251	278Q2101	PIPE, 3/8" o/d x 20G FILTER TO ..... CHARGING VALVE, GROUP (Mod. 2236)	1	DTD5016		GA1/36
26TA/16673	150SS3557 DOWTY	Tee-piece, 3/8" x 3/8" x 1/4" B.S.P. ....	1	-	C	GA1/37
	1.00145.002 DOWTY	Valve, selector .....	1	-		GA1/38
27QM/4173578	C4719Y.Mk.B DOWTY	Valve, pressure reducing .....	1	-	A	GA1/39
27QM/70112	12114Y.A01	Jack, hydraulic, scoop and exhaust .....	1	-	A	GA1/40
1433473	52F10364	Nut, thin, turnbuckle, R.H. ....	1	-	C	GA1/41
	53F10364	Nut, thin, turnbuckle, L.H. ....	1	-	MR	GA1/42
7297	1F10375	Pipe, jet for A.A.P.P. ....	1	S251	C	GA1/43

VULCAN Mk. 2

EQUIPMENT AIRCRAFT  
A.A.P.P. INSTALLATION

Page GA. 4A

Ref. No.	Part No.	Description	No. off	Matl. Spec.	Cl. of St.	Plate and Illust'n No.
					M.R.	
		1 2 3 4				
7298 17407	19F10364	PIPE, EXHAUST, CARTRIDGE START, ..... FORWARD, GROUP	1	—	MR	GA1/44
	20F10364	PIPE, EXHAUST, CARTRIDGE START, ..... AFT, GROUP	1	—	MR	GA1/45
	22F10364	Spares for:— Ring, "O" rubber (60-70 shore hardness, ..... resistant to E.E.L.3 and Kerosene)	1	Rubber	MR	
	PIPES, FUEL IN U/C WHEEL BAY A.A.P.P. (3P3292) (See:—Fuel system in mainplane)					
	11F10364	Ring, sealing, jet pipe shroud ..... (Bestobell Silastic Asbestos)	1	—	MR	GA1/46
	ROSE BROS. R.M.6	Rod-end, self aligning at third mounting ..... point	1	—	MR	GA1/47
	1F10376	Shroud, jet pipe .....	1	—	C	GA1/48
	5F10237	Turnbuckle, attachment, power unit third ..... mounting point	1	S94 or S95	C	GA1/49



VULCAN Mk. 2

EQUIPMENT - AIRCRAFT

A.A.P.P. INSTALLATION

SUMMARY OF STANDARD ITEMS

Stores Ref.		No. off	Stores Ref.		No. off	Stores Ref.		No. off
Section	Ref. No.		Section	Ref. No.		Section	Ref. No.	
28U	13999	1						
28U	13997	1						
28U	4052	1						

AUXILIARY AIRBORNE POWER PLANT INSTALLATION  
INNER MAINPLANE

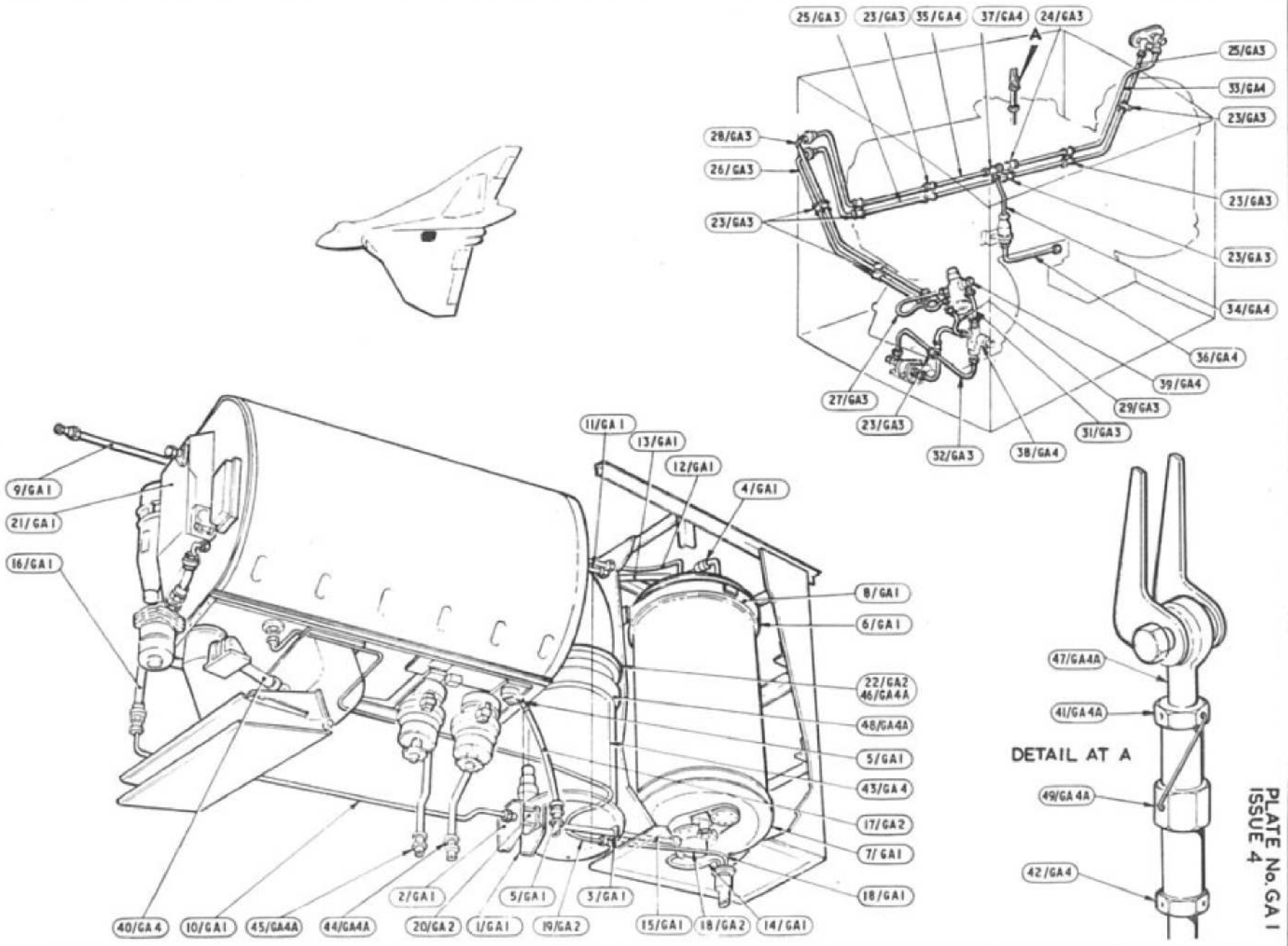


PLATE No. GA 1  
ISSUE 4

This file was downloaded  
from the RTFM Library.  
Link: [www.scottbouch.com/rtfm](http://www.scottbouch.com/rtfm)

Please see site for usage terms,  
and more aircraft documents.

