

VULCAN Mk. 2

POWER INSTALLATION

Page NB. 1

ENGINE

Ref. No.	Part No.	Description	No. off	Matl. Spec.	Cl. of St.	Plate and Illust'n No.
					M.R.	
		1 2 3 4				
		ENGINE INSTALLATION, "OLYMPUS" 201 E.C.U. INBOARD AND OUTBOARD, PORT AND STARBOARD (5, 6, 7, 8.O.3942) (Pre-Mod. 906)				
		ENGINE INSTALLATION, "OLYMPUS" 301 E.C.U. INBOARD AND OUTBOARD, PORT AND STARBOARD (O.3987) (Mod. 906)				
		Spares for:—				
	ENGLISH ELECTRIC AE2039 Mk. 3 AE2039 Mk. 4	ALTERNATOR GROUP (Pre-Mod. 2197)	1	—		NB1/1
		ALTERNATOR GROUP (Mod. 2197)	1	—		
		Spares for:—				
5UA/4357532	AE2023 Mk. 1	Alternator, Type 158B (Pre-Mod. 2197)	1	—	A	NB1/2
5UA/1984849	AE2023 Mk. 3	Alternator, Type 175 (Mod. 2197)	1	—	A	
37F/4675255	ZA16801/1	Blanket, insulation	1	—	C	NB1/9
11753	12.O.3987	Bracket, starboard, inboard	1	L72	C	NB1/10
	13.O.3987	Bracket, starboard, outboard	1	L72	MR	NB1/11
	BRISTOL SIDDELEY B134845	Circlip, hydraulic pump quill shaft (Mod. 2025)	1	—		NB1/12
	ROTOR					
37L/4521229	GA23381	Clamp, manacle	1	—	C	NB1/13
	18.O.3987	Cleat	2	L72		
11751	9.O.3987	Clip, inboard and outboard, starboard	1	—	C	NB1/14
37F/6080872	ZA11615	Combuster (Mod. 1791)	1	—	A	NB1/15
	BRISTOL B228181	Constant speed drive and dressing, alternator	1	—		NB1/8
		COOLING, ENGINE BAY, INBOARD AND OUTBOARD, PORT AND STARBOARD (1, 2, 3 & 4.O.3955)				
		Spares for:—				
	91.O.3955	Bracket, mounting	1	—	MR	
		BRACKET, SUPPORT, INBOARD AND OUTBOARD ENGINE BAY, PORT AND STARBOARD (20, 21, 32 & 33.O.03955)				
		Spares for:—				
	29.O.3955	Bolt, special, for links	1	S1	MR	NB3/17*
	28.O.3955	Link, suspension, inboard, port and starboard	2	L72	MR	NB3/18
8743	90.O.3955	Link, suspension, outboard bay, port and starboard	2	L72	C	NB3/19
	72Z6632	Bush, at duct joint clamp, inboard bay, port and starboard	2	DTD364B	MR	NB3/16
7288	38.O.3955	Clamp, half, top, for 5" dia. duct	1	S3	C	NB3/20
7290	39a.O.3955	Clamp, half, bottom, for 5" dia. duct	1	S3	C	NB3/21
	17Z7648	Clamp, half, forward and rear duct	2	DTD731	MR	NB3/22
	KING A/C C6049/18B	Clamp, at "V" flanged union	1	—	MR	NB3/23

POWER INSTALLATION
ENGINE

Ref. No.	Part No.	Description	No. off	Mtrl. Spec.	Cl. of	Plate and Illust'n No.
					St. M.R.	
		1 2 3 4				
COOLING, ENGINE BAY, INBOARD AND OUTBOARD, PORT AND STARBOARD (1, 2, 3 & 4.O.3955) (Cont'd)						
12062	AK3/SS4234	Clip, half, top	5	—	MR	NB3/24
	AK10/SS4234	Clip, half, bottom	5	—	MR	NB3/25
	14SS3863	Clip, pipe	3	—	MR	
	146SS3653	Coupling, pipe	1	S. Steel	C	NB3/26
	83.O.3955	DUCT, FORWARD, 5" O/D, OUTBOARD ... ENGINE BAY, GROUP	1	—		NB3/27
	5.O.3955	DUCT, FORWARD, 5" O/D, INBOARD ENGINE BAY, GROUP	1	—	MR	NB3/28
7272	6.O.3955	DUCT, CENTRE, 5" O/D, PORT OUT- BOARD AND STARBOARD INBOARD ENGINE BAY, GROUP	1	—	C	NB3/29
7283	7.O.3955	DUCT, CENTRE, 5" O/D, PORT INBOARD . AND STARBOARD OUTBOARD, ENGINE BAY, GROUP	1	—	C	NB3/30
	63.O.3955	Fairing, port outboard, starboard inboard	1	—	MR	NB3/31
7278	64.O.3955	Fairing, port inboard, starboard outboard	1	—	MR	NB3/32
7295	38.O.3955	Injector, at forward duct	1	—	C	NB3/33
7273	41.O.3955	Link, duct clamp	2	L72	C	NB3/34
7284	8.O.3955	Pipe, outlet, port outboard, starboard inboard	1	—	C	NB3/35
	9.O.3955	Pipe, outlet, port inboard, starboard outboard	1	—	C	NB3/36
	15.O.3955	Pipe, flexible	1	—	MR	NB3/37
	100.O.3955	PIPE, FROM INJECTOR TO JOINT WITH ... PIPE (101.O.3955) PORT INBOARD ENGINE BAY, GROUP	1	—	MR	NB3/38
8738	101.O.3955	PIPE, FROM FLEXIBLE PIPE TO JOINT ... WITH PIPE (100.O.3955) PORT, I/B AND O/B, AND STARBOARD INBOARD ENGINE BAY, GROUP	1	—	C	NB3/39
8740	102.O.3955	PIPE, FROM INJECTOR TO JOINT WITH ... PIPE (103.O.3955) STARBOARD OUT- BOARD ENGINE BAY, GROUP	1	—	C	NB3/40
8739	103.O.3955	PIPE, FROM FLEXIBLE PIPE TO JOINT ... WITH PIPE (102.O.3955) STARBOARD OUTBOARD ENGINE BAY, GROUP	1	—	C	NB3/41
28E/1953164	SP91/E or	Clip, jubilee	2	—	C	
28E/20104	SP91/F	Clip, jubilee	2	—	C	
28E/6250283	SP91/J or	Clip, jubilee	1	—	C	
28E/20019	SP91/K	Clip, jubilee	1	—	C	
28E/4062142	SP91/R	Clip, jubilee	1	—	C	

POWER INSTALLATION
ENGINE

Ref. No.	Part No.	Description	No. off	Matl. Spec.	Cl. of St.	Plate and Illust'n No.
					M.R.	
		1 2 3 4				
		COOLING, ENGINE BAY, INBOARD AND OUTBOARD, PORT AND STARBOARD (1, 2, 3 & 4.O.3955) (Cont'd)				
	119.O.3955	PIPE, JOINING PIPE (121.O.3955) WITH ... PIPE (101.O.3955) PORT OUTBOARD ENGINE BAY, GROUP (Mod. 1320)	1	—	MR	NB3/42
	120.O.3955	PIPE, JOINING PIPE (122.O.3955) WITH PIPE (101.O.3955) STARBOARD INBOARD ENGINE BAY, GROUP (Mod. 1320)	1	—	MR	NB3/43
	121.O.3955	PIPE, FROM INJECTOR TO JOINT WITH PIPE (119.O.3955) PORT OUT- BOARD ENGINE BAY, GROUP (Mod. 1320)	1	—	MR	NB3/44
	122.O.3955	PIPE, FROM INJECTOR TO JOINT WITH PIPE (120.O.3955) STARBOARD INBOARD ENGINE BAY, GROUP (Mod. 1320)	1	—	MR	NB3/45
	92.O.3955	Plate, half, sealing, L.H.	1	—	MR	NB3/46
	93.O.3955	Plate, half, sealing, R.H.	1	—	MR	NB3/47
	123.O.3955	Seal, at sealing plates	1	Hallite		NB3/48
	14.O.3955	Seal, joint, between centre duct and outlet ... pipes	1	DTD378A	MR	NB3/49
	47.O.3955	Seal, joint, between forward duct and hoist ... box	1	DTD378A	MR	NB3/50
28F/17675	BESTOBELL AS5402	Seal, at "V" flanged union	1	—	C	NB3/51
7293	BESTOBELL AS5411	Seal, at forward and rear duct joint	1	—	C	NB3/52
7282	51.O.3955	Union, "V" flanged, for flexible pipe	1	S110	C	NB3/53
		COOLING, JET PIPE, INBOARD AND OUTBOARD, PORT AND STARBOARD (1, 2, 3 & 4.O.3956)				
	8.O.3956	Spares for:— BRACKET, MOUNTING, FOR DUCTS, GROUP	2	—	MR	NB3/54
28E/8188	AGS605/6	Clip, jubilee	7	—	C	
7245	13.O.3956	Distributor, cold air, upper section	1	—	C	NB3/55
7246	16.O.3956	Distributor, cold air, lower section	1	—	C	NB3/56
	27.O.3956	DUCT, PORT INBOARD BAY, GROUP Spares for:—	1	—	MR	NB3/57
	17.O.3956	Duct, elbow	1	—		NB3/58
7239	19.O.3956	Duct	1	—	C	NB3/59
	6.O.3956	Plate, seal	1	S521	MR	NB3/60
	7.O.3956	Seal (Bestobell)	1	—	MR	NB3/61

POWER INSTALLATION
ENGINE

Ref. No.	Part No.	Description	No. off	Matl. Spec.	Cl. of	Plate
					St. M.R.	and Illust'n No.
		1 2 3 4				
COOLING, JET PIPE, INBOARD AND OUTBOARD, PORT AND STARBOARD (1, 2, 3 & 4.O.3956) (Cont'd)						
9281	28.O.3956	DUCT, PORT OUTBOARD BAY, GROUP ...	1	—	B	NB3/62
		Spares for:—				
13455	17.O.3956	Duct, elbow	1	—		NB3/58
	38.O.3956	Duct (Mod. 1491)	1	—	C	NB3/63
	6.O.3956	Plate, seal	1	S521	MR	NB3/60
	7.O.3956	Seal	1	—	MR	NB3/61
9282	29.O.3956	DUCT, STARBOARD INBOARD BAY, GROUP	1	—	B	NB3/64
		Spares for:—				
13456	17.O.3956	Duct, elbow	1	—		NB3/58
	39.O.3956	Duct (Mod. 1491)	1	—	C	NB3/65
	6.O.3956	Plate, seal	1	S521	MR	NB3/60
	7.O.3956	Seal	1	—	MR	NB3/61
7283	30.O.3956	DUCT, STARBOARD OUTBOARD BAY, ... GROUP	1	—	B	NB3/66
		Spares for:—				
11520	17.O.3956	Duct, elbow	1	—		NB3/58
	36.O.3956	Duct (Mod. 1491)	1	—	C	NB3/67
	6.O.3956	Plate, seal	1	S521	MR	NB3/60
	7.O.3956	Seal	1	—	MR	NB3/61
7243	14.O.3956	INTAKE, PORT INBOARD, GROUP	1	—	B	NB3/68
	15.O.3956	INTAKE, PORT OUTBOARD, AND STARBOARD INBOARD AND OUTBOARD, GROUP	1	—	MR	NB3/69
7236	11.O.3956	Piece, joint, port inboard	1	—	C	NB3/70
	12.O.3956	Piece, joint, port outboard and starboard inboard and outboard	1	—	MR	NB3/71
	10.O.3956	Pipe, flexible	1	—	MR	NB3/72
	9.O.3956	PLATE, MOUNTING, GROUP	1	—	MR	NB3/73
1433553	42.O.3956	PLATE, MOUNTING, PORT OUTER, STARBOARD INNER, GROUP	1	—	C	NB3/74
1433139	43.O.3956	PLATE, MOUNTING, PORT OUTER, STARBOARD INNER, GROUP	1	—	C	NB3/75
DRAINS, FUEL, AT REAR OF ENGINE (1 O.3954)						
		Spares for:—				
	32SS3563	Coupling	1	S1	MR	NB1/76
	3.O.3954	Hose, flexible	1	—	MR	NB1/77
	6SS4070	Nut, lock, coupling	1	—	MR	NB1/78
	2.O.3954	Pipe, drain	1	—	MR	NB1/79

POWER INSTALLATION
ENGINE

Ref. No.	Part No.	Description	No. off	Matl. Spec.	Cl. of St.	Plate and Illust'n No.
					M.R.	
		1 2 3 4				
		DRAIN PIPE, OVERBOARD OIL SEPARATOR OUTLET, INBOARD AND OUTBOARD ENGINES, PORT AND STARBOARD, FWD. AND AFT OF FRAME 428" (1-2.O.4164, 3-4.O.4164 AND 71-72.O.4164) (Mod. 934)				
	BP7SS4234	Clip, half, former 36-37	1	—	MR	NB6/192
	BP17SS4234	Clip, half, former 36-37	1	—	MR	NB6/193
		Attachments for BP7SS4234 and BP17SS4234				
28D/1212399	A25/28C	Bolt, 2 BA	—	—	C	NB6/194
	BP7SS4234	Clip, half, at intercostal 18 i/b	1	—	MR	NB6/195
	BP19SS4234	Clip, half, at intercostal 18 i/b	1	—	MR	NB6/196
		Attachments for BP7SS4234 and BP19SS4234				
28D/1011027	A25/27C	Bolt, 2 BA	1	—	C	NB6/197
28M/1012015	AGS2001/C1/66	Nut, stiff, 2 BA	1	—	C	
28W/9419402	SP13/C	Washer, 2 BA	1	—	C	
	BP7SS4234	Clip, half, intercostal 21, 23 & 25	3	—	MR	NB6/198
22161	BP18SS4234	Clip, half, intercostal 21, 23 & 25	3	—	C	NB6/199
		Attachments for BP7SS4234 and BP18SS4234				
28D/1011026	A25/26C	Bolt, 2 BA	1	—	C	NB6/200
28M/1012015	AGS2001/C1/66	Nut, stiff	1	—	C	
28W/9419402	SP13/C	Washer	1	—	C	
	BP7SS4234	Clip, half	1	—	MR	NB6/201
	BP17SS4234	Clip, half	1	—	MR	NB6/202
		Attachments for BP7SS4234 and BP17SS4234				
28D/1011026	A25/26C	Bolt, 2 BA	1	—	C	NB6/203
28M/1012015	AGS2001/C1/66	Nut, stiff, 2 BA	1	—	C	
28W/9419402	SP13/C	Washer, 2 BA	1	—	C	
	BP7SS4234	Clip, hose, intercostal 21 o/b	1	—	MR	NB6/204
	BP19SS4234	Clip, hose, intercostal 21 o/b	1	—	MR	NB6/205
		Attachments for BP7SS4234 and BP19SS4234				
28D/1011027	A25/27C	Bolt, 2 BA	1	—	C	NB6/206
28M/1012015	AGS2001/C1/66	Nut, stiff, 2 BA	1	—	C	
28W/9419402	SP13/C	Washer, 2 BA	1	—	C	
	BP7SS4234	Clip, half, intercostal 23 & 25 o/b	2	—	MR	NB6/207
	BP22SS4234	Clip, half, intercostal 23 & 25 o/b	2	—	MR	NB6/208
		Attachments for BP7SS4234 and BP22SS4234				
28D/1212402	A25/31C	Bolt, 2 BA	1	—	C	NB6/209
28M/1012015	AGS2001/C1/66	Nut, stiff, 2 BA	1	—	C	
28W/9419402	SP13/C	Washer, 2 BA	1	—	C	

POWER INSTALLATION
ENGINE

Ref. No.	Part No.	Description	No. off	Matl. Spec.	Cl. of	Plate and Illust'n No.
					St. M.R.	
		1 2 3 4				
		DRAIN PIPE, OVERBOARD OIL SEPARATOR OUTLET, INBOARD AND OUTBOARD ENGINES, PORT AND STARBOARD, FWD. AND AFT OF FRAME 428" (1-2.O.4164, 3-4.O.4164) (Cont'd)				
	BP7SS4234	Clip, half, intercostal 27, 29 & 30 o/b	3	—	MR	NB6/210
	BP22SS4234	Clip, half, intercostal 27, 29 & 30 o/b	3	—	MR	NB6/211
		Attachments for BP7SS4234 and BP22SS4234				
28D/1212402	A25/31C	Bolt, 2 BA	1	—	C	NB6/212
28M/1012015	AGS2001/C1/66	Nut, stiff, 2 BA	1	—	C	
28W/9419402	SP13/C	Washer	1	—	C	
	29.O.4164	Clip, at intercostal 23 o/b	—	—		NB6/213
		Attachments for 29.O.4164				
28D/9436920	A25/1C	Bolt, 2 BA	—	—	C	NB6/214
28M/1012015	AGS2001/C1/66	Nut, stiff	—	—	C	
28W/9419402	SP13/C	Washer, 2 BA	—	—	C	
	BP7SS4234	Clip, half, intercostal 35 o/b	1	—	MR	NB6/215
	BP22SS4234	Clip, half, intercostal 35 o/b	1	—	MR	NB6/216
		Attachments for BP7SS4234 and BP22SS4234				
28D/1212402	A25/31C	Bolt, 2 BA	1	—	C	NB6/217
28M/1012015	AGS2001/C1/66	Nut, stiff	1	—	C	
28W/9419402	SP13/C	Washer, 2 BA	1	—	C	
22164	BP7SS4234	Clip, half	1	—	MR	NB6/218
	BP13SS4234	Clip, half	1	—	C	NB6/219
		Attachments for BP7FF4234 and BP13SS4234				
28D/1011024	A25/21C	Bolt, 2 BA	1	—	C	NB6/220
28W/9419402	SP13/C	Washer	1	—	C	
22161	BP7SS4234	Clip, half, intercostal 33 & 35	2	—	MR	NB6/221
	BP18SS4234	Clip, half, intercostal 33 & 35	2	—	C	NB6/222
		Attachments for BP7SS4234 and BP18SS4234				
28D/1011026	A25/26C	Bolt, 2 BA	1	—	C	NB6/223
28M/1012015	AGS2001/C1/66	Nut, stiff	1	—	C	
28W/9419402	SP13/C	Washer	1	—	C	
28E/4710971	SP91N	Clip, jubilee	18L 15S	—	C	NB6/224
28E/2027591	SP91L	Clip, jubilee (Starboard only)	3	—	C	NB6/225
	50SS4490	Clip, bonding	17L 15S	—	MR	NB6/226

POWER INSTALLATION

ENGINE

Ref. No.	Part No.	Description	No. off	Matl. Spec.	Cl. of St.	Plate and Illust'n No.
					M.R.	
		1 2 3 4				
		DRAIN PIPE, OVERBOARD, OIL SEPARATOR OUTLET, INBOARD AND OUTBOARD ENGINES (Cont'd)				
11938	64 O 4164	COVER, DETACHABLE, PORT, OUTER, ... GROUP	1	—		NB7/227
	65 O 4164	COVER, DETACHABLE, PORT, INNER, ... GROUP	1	—		NB7/228
	4SS4353	Attachments for Covers 64-65 O 4164 Screw, 2 BA	6	—		NB7/229
	2SS4353		14	—		NB7/230
	7 O 4164	DUCT, 20G x 3.0" o/d x 63.35" long ... outboard, port	1	L54		NB7/231
	13 O 4164	DUCT, OUTBOARD, STARBOARD, GROUP Consisting of:—	1	—		NB7/232
	13a O 4164	Duct, 20G x 3.0" o/d x 56.6" long	1	L54		
	13b O 4164	Duct, half reducing 20G x 9.5" x 5" long	1	L54		
	13c O 4164	Duct, half reducing 20G x 9.5" x 5" long	1	L54		
	90 O 4164	Duct, 20G x 3.0" o/d x 65" long ... outboard, port (Mod. 2218)	1	—		NB7/233
	14 O 4164	DUCT, OUTBOARD, STARBOARD, GROUP Consisting of:—	1	—		NB7/234
	14a O 4164	Duct, 20G x 3.0" o/d x 56" long	1	L54		
	14b O 4164	Duct, half reducing 20G x 9.5" x 5"	1	L59		
	14c O 4164	Duct, half reducing 20G x 9.5" x 5"	1	L59		
13579	85 O 4164	Duct, 20G x 3.0" o/d, outboard, port	1	L54		NB7/235
13578	84 O 4164	Duct, 20G x 3.0" o/d, outboard, starboard	1	L54		NB7/236
	12 O 4164	Duct, 20G x 3.0" o/d, outboard, port	1	L54		NB7/237
	11 O 4164	Duct, 20G x 3.0" o/d, outboard, starboard	1	L54		NB7/238
	21 O 4164	Duct, 20G x 3.0" o/d x 60.35" long, inboard, port and starboard	1	L54		NB7/239
13580	87 O 4164	Duct, 20G x 3.0" o/d x 68" long, inboard port and starboard	1	L54		NB7/240
13576	81 O 4164	Duct, 20G x 3.0" o/d x 40" long, inboard, port	1	L54		NB7/241
13577	82 O 4164	Duct, 20G x 3.0" o/d x 40" long, inboard, starboard	1	L54		NB7/242
	24 O 4164	Duct, 20G x 3.0" o/d x 34.00", inboard, port and starboard	1	L54		NB7/243
	46 O 4164	DUCT, PORT, OUTBOARD, STARBOARD, INBOARD, GROUP	1	L54		NB7/244

POWER INSTALLATION

ENGINE

Ref. No.	Part No.	Description	No. off	Matl. Spec.	Cl. of	Plate and Illust'n No.
					St. M.R.	
		1 2 3 4				
		DRAIN PIPE OVERBOARD, OIL SEPARATOR OUTLET INBOARD AND OUTBOARD ENGINES (Cont'd)				
	47.O.4164	DUCT, PORT INBOARD AND STARBOARD, OUTBOARD, GROUP	1	—		MB7/245
	15.O.4164	Duct, 20G x 3.0" o/d x 34" long	1	L54		MB7/246
	16.O.4164	duct, 20G x 3.0" o/d x 34" long	1	L54		MB7/247
17556	78.O.4164	inboard port, outboard starboard Duct, 20G x 3.0" o/d x 140" long	1	L54		MB7/248
17602	20.O.4164	inboard port, outboard starboard Duct, 20G x 3.0" o/d x 140" long	1	L54		MB7/249
22165	48.O.4164	inboard starboard, outboard port FAIRING FORWARD PORT OUTER	1	—		MB7/250
		GROUP, STNS. 37-40				
22166	49.O.5164	FAIRING FORWARD PORT INNER	—	—		MB7/251
		GROUP, STNS. 37-40				
22167	62-O-4164	FAIRING FORMERS 40-355.5" PORT,	1	—		MB7/252
		GROUP, OUTER				
11937	63.O.4164	FAIRING FORMERS 40-355.5" PORT,	1	—		MB7/253
		INNER, GROUP				
	66.O.4164	FAIRING FORMERS 370-428" PORT,	1	—		MB7/254
		INNER, GROUP				
	67.O.4164	FAIRING FORMERS 370-428" PORT,	1	—		MB7/255
		OUTER, GROUP				
	68.O.4164	FAIRING REAR, FORMER 428-480"	1	—		MB7/256
		PORT, OUTER, GROUP				
	69.O.4164	FAIRING REAR, FORMER 428-480",	1	—		MB7/257
		PORT, INNER, GROUP				
	1.O.4168	HOSE FLEXIBLE, INNER AND	1	—		MB8/258
		OUTBOARD, PORT, GROUP				
	2.O.4168	HOSE FLEXIBLE, INNER AND OUTER	1	—		MB8/259
		STARBOARD, GROUP				
		Consisting of:—				
11939	AGS605/4	Clip, jubilee	2	—		MB7/260
	3.O.4168	Duct, elbow	1	—		MB8/262
11941	7.O.4168	Elbow	1	—		MB8/263
11942	8.O.4168	Elbow	1	—		MB8/264
11940	4.O.4168	Hose, flexible (Silicone Gloss-BAS/37M) ..	1	—		MB8/261

VULCAN Mk. 2

POWER INSTALLATION
ENGINE

Page NB. 4E

Ref. No.	Part No.	Description	No. off				Matl. Spec.	Cl. of St.	Plate and Illust'n No.
			1	2	3	4		M.R.	
		DRAIN PIPE OVERBOARD, OIL SEPARATOR OUTLET, INBOARD AND OUTBOARD ENGINES, PORT AND STARBOARD, FORWARD AND AFT OF FRAME 428" (Cont'd)							
		JOINT, HOSE, ASSEMBLY						NB8/265	
		Consisting of:-							
28D/9436920	A25/1C	Bolt, 2 BA		2			C	NB8/266	
	50SS4490	Clip, bonding		2			MR	NB8/267	
	AGS605/4	Clip, jubilee		2				NB8/268	
	AS3360C7C	Lead, bonding		1				NB8/269	
28M/1012015	AGS2001/C1/66	Nut, stiff		2			C		
	BAS/45/GH/E/48/4/HL	Sleeve, jointing 4" long		1				NB8/270	
	44.O.4164	Tape, bedding BAS23/2/J26/3		1				NB8/271	
	AS3360/C7C	Lead, bonding		QR					
	AS3360/C4C	Lead, bonding		QR					
	37SS4700	Spring, tension		2			MR	NB8/272	
	DOWTY								
27QA/4118360	SP901/11	Seal "O"		1			C	NB8/273	
	BELLS ASB. & ENG. LTD 43.O.4164	Tape, bedding (BAS23/2/J26/3)		QR					
	BELLS ASB. & ENG. LTD. 44.O.4164	Tape, bedding (BAS23/2/J26/3)		QR					
	BELLS ASB. & ENG. LTD. 45.O.4164	Tape, bedding (BAS23/2/J26/3)		QR					

POWER INSTALLATION

ENGINE

Ref. No.	Part No.	Description	No. off	Matl. Spec.	Cl. of St.	Plate and Illust'n No.
					M.R.	
		1 2 3 4				
12215	9.O.3942	DUCT, EXHAUST, PORT INBOARD, GROUP .	1	—	B	NB1/80
	10.O.3942	DUCT, EXHAUST, STARBOARD, INBOARD, . PORT OUTBOARD, GROUP	1	—	MR	NB1/81
	11.O.3942	DUCT, EXHAUST, STARBOARD, OUTBOARD, GROUP	1	—	MR	NB1/82
	BRISTOL B173172	Engine, Olympus 301 (See AP4783A, Vol. 3, Pt. 1)	1	—		NB1/83
		FIRE EXTINGUISHER SYSTEM, ENGINE BAYS, PORT AND STARBOARD (29 & 30Z9580) (See Services—Fire Protection)				
		FIREPROOFING, ENGINE BAYS, PORT AND STARBOARD (1 & 2E2931) (See Equipment Aircraft—Fireproofing and Soundproofing)				
		INTAKE, AIR REMOVABLE PORTION, AFT OF FORWARD ENGINE BULKHEAD (1.O.4096) (Mod. 906) Spares for:—				
8052	2.O.3951	PANEL, HALF, TOP, GROUP (Pre-Mod. 906)	1	—	A	
11761	2.O.4096	PANEL, HALF, TOP, GROUP (Mod. 906) ... Spares for:—	1	—	A	NB4/84
1433027	17.O.3573	BRACKET, FOR HOOK, GROUP Consisting of:—	4	—	C	
	14.O.3573	Bracket	1	DTD364B		
	10g.O.3527	Pin	1	—		
	15.O.4096	MEMBER, EDGE, GROUP Spares for:—	1	—		
	15a.O.4096	Channel	1	L72		
	15b.O.4096	Strip, sealing	1	Rubber		
	16.O.4096	MEMBER, EDGE, GROUP Spares for:—	1	—		
	16a.O.4096	Channel	1	L72		
	16b.O.4096	Strip, sealing	1	Rubber		
	8.O.4096	RING, HALF, REAR, GROUP Spares for:—	1	—	MR	
	8b.O.4096	Seal, "P" (Make from SS4382, Ref. No. . 26DC/8568 x 8' 6" long)	1	Neoprene		
	8c.O.4096	Strip, retaining, 20G x 0.5" x 4' 2-1/2" ..	1	L72		
	8d.O.4096	Strip, retaining, 20G x 0.5" x 4' 3-1/2" ..	1	L72		
	10.O.4096	RING, HALF, FORWARD, GROUP Spares for:—	1	—	MR	
	10b.O.4096	Seal, "P" (Make from SS4382, Ref. No. . 26DC/8568 x 8' 6" long)	1	Neoprene		
	10c.O.4096	Strip, retaining, 20G x 0.5" x 4' 2-1/2" ..	1	L72		
	10d.O.4096	Strip, retaining, 20G x 0.5" x 4' 3-1/2" ..	1	L72		

POWER INSTALLATION
ENGINE

Ref. No.	Part No.	Description	No. off	Mati. Spec.	Cl. of	Plate and illust'n No.
					St. M.R.	
		1 2 3 4				
		INTAKE, AIR, REMOVABLE PORTION, AFT TO FORWARD ENGINE BULKHEAD (1.O.4096) (Cont'd)				
	35.O.3951	PANEL, HALF BOTTOM, GROUP (Pre-Mod. 906)	1	—	MR	
11762	3.O.4096	PANEL, HALF BOTTOM, GROUP (Mod. 906)	1	—	A	NB4/85
	26.O.4096	Spares for:— CATCH, GROUP	4	—		
	13.O.3573	Consisting of:— Bracket, saddle	1	DTD364B	MR	
26FP/16909	37.O.3951	Hook	1	S96	MR	
	2.O.3770	Lever (L/M for L65 (30B) 2.75" x 1.0" x 5")	1	L65	C	
28M/1007403	10c.O.3527	Link	1	S1	MR	
	A27/ET	Nut, 1/4" BSF	1	—	C	
	10e.O.3527	Pin, 3/16" dia. x 1.185" long (Make from 30A/397)	1	S1		
26FP/16911	10f.O.3527	Pin, 3/16" dia. x 0.8" long	1	S1	C	
	22.O.4096	MEMBER, EDGE, GROUP	1	—		
	22a.O.4096	Spares for:— Channel	1	L72		
	22b.O.4096	Seal, 0.5" x 0.25" x 14" long	1	L72		
	23.O.4096	MEMBER, EDGE, GROUP	1	—		
	23a.O.4096	Spares for:— Channel	1	L72		
	23b.O.4096	Seal, 0.5" x .025" x 14" long	1	L72		
	9.O.3527	PIN, QUICK RELEASE, GROUP	2	—		NB4/86
28FP/9713920	A.411	Spares for:— Pin, pip	1	—	C	
	7.O.4096	RING, HALF, REAR, GROUP	1	—	MR	
	3d.O.3744	Spares for:— Seal, 1.25" x 1.25" x 0.125"	2	Gaco	MR	
	7b.O.4096	Seal, "P" (Make from SS4382, Ref. No. . 26DC/8568 x 2' 9" long)	1	Neoprene		
	7c.O.4096	Strip, retaining, 20G x 0.5" x 2' 9"	1	L72		
1510681	9.O.4096	RING, HALF, FORWARD, GROUP	1	—	C	
	3d.O.3744	Spares for:— Seal, 1.25" x 1.25"	2	Gaco	C	
6823	9b.O.4096	Seal, "P" (Make from SS4382, Ref. No. . 26DC/8568 x 2' 9" long)	1	Neoprene		
	9c.O.4096	Strip, retaining, 20G x 0.5" x 2' 9"	1	L72		
		INTAKE, AIR, FIXED PORTION, AFT OF BULKHEAD, 63.19", PORT AND STARBOARD (1 & 2F12857) (Mod. 2138) (See Fuselage—Centre Portion, page JB. 64)				
1510295	1.O.4171	Pipe, flexible, inboard and outboard bays, port ..	1	—		NB1/87
	2.O.4171	Elbow	1	—		
	1.O.4172	Pipe, flexible, inboard bay, starboard	1	—		NB1/88
	1.O.4173	Pipe, flexible, outboard bay, starboard	1	—		NB1/89
12218	PALMER MB636	Pipe, flexible	1	—	C	NB1/90

POWER INSTALLATION
ENGINE

Ref. No.	Part No.	Description	No. off	Matl. Spec.	Cl. of St.	Plate and Illust'n No.
					M.R.	
		1 2 3 4				
		RAILS, GUIDE, JET PIPE, PORT AND STARBOARD (1F10603) (Cont'd.)				
	39F10603	Rail, guide, 1186SS1793 x 32.5" long, inboard bay, port	—	—	MR	NB5/111
	41F10603	Rail, guide, 1186SS1793 x 2' 8.75" long	2	AVR49 or 50	MR	NB5/112
	42F10603	Rail, guide, 1186SS1793 x 5' 1" long	2	AVR49 or 50	MR	NB5/113
	43F10603	Rail, guide, 1186SS1793 x 14" long, outboard bays, port and starboard	1	AVR49 or 50	MR	NB5/114
28U/4678946	49aF10603	Retaining plate	4	S514		NB5/117
	AS2381	Rod, tension	1	—	C	NB5/115
	30F10603	Trunnion (Make from AS2387, Ref. No. 28U/13988)	1	—	MR	
	31F10603	Trunnion (Make from AS2384, Ref. No. 28U/13991)	1	—		
	1.O.3756	RING, HALF, CLAMP, FOR JET PIPE SEAL AT REAR ENGINE BULKHEAD, GROUP	2	—	MR	NB1/116
	4.O.3656	BRACKET, HOOK, GROUP Consisting of:—	1	—	MR	
	8.O.3756	Bracket	1	—		
	10d.O.3527	Hook	1	S1		
	6.O.3756	Lever	1	S1		
28M/1007403	10c.O.3527	Link	1	S1	MR	
	A27/ET	Nut, thin, 1/4" BSF	1	—	C	
	10e.O.3527	Pin	1	S1		
	10f.O.3527	Pin	1	S1		
22633	5.O.3756	BRACKET, GROUP	1	—	MR/C	
	9.O.3527	PIN, QUICK RELEASE, GROUP Spares for:—	1	—		NB1/86
28FP/9713920	A411	Pin, pip	1	—	C	
	3.O.3775	RING, RETAINING, AIR INTAKE, TOP, AND BOTTOM AFT, GROUP (Pre-Mod. 906)	1	—	MR	
11743	1.O.4097	RING, RETAINING, AIR INTAKE, TOP, AFT, GROUP (Mod. 906)	1	—	MR/C	NB4/117
11744	2.O.4097	RING, RETAINING, AIR INTAKE, BOTTOM, AFT, GROUP (Mod. 906)	1	—	MR/C	NB4/118
	3.O.4097	BRACKET, HOOK, GROUP Spares for:—	1	—	MR	NB4/119
28M/1007403	25/0/4096	Hook	1	S96		
	A27/ET	Nut, thin, 1/4" BSF	1	—	C	
	9.O.3527	PIN, QUICK RELEASE, GROUP (For Spares—See above)	1	—		NB4/86
7259	1.O.3952	RING, RETAINING, AIR INTAKE, TOP FORWARD, GROUP (Pre-Mod. 906)	1	—	MR/C	
	1.O.4098	RING, RETAINING, AIR INTAKE, TOP, FORWARD, GROUP (Mod. 906)	1	—	MR	NB4/120

VULCAN Mk. 2

POWER INSTALLATION

Page NB. 9

ENGINE

Ref. No.	Part No.	Description	No. off	Matl. Spec.	Cl. of St.	Plate and Illust'n No.
					M.R.	
		1 2 3 4				
7260	2.O.3952	RING, RETAINING, AIR INTAKE, BOTTOM, FORWARD GROUP (Pre-Mod. 906)	1	—	MR/C	
	2.O.4098	RING, RETAINING, AIR INTAKE, BOTTOM, FORWARD, GROUP (Mod. 906)	4	—	MR	NB4/121
	3.O.4097	BRACKET, HOOK, GROUP	1	—		
	4.O.4097	Hook	1	S96		
28M/1007403	A27/ET	Nut, thin, 1/4" BSF	1	—	C	
	9.O.3527	PIN, QUICK RELEASE, GROUP (For Spares — See Page NB.8)	1	—		NB4/86
7269	1.O.3953	SEAL, JET, PIPE AT REAR ENGINE BULKHEAD, GROUP	1	—	C	NB1/122
		Strip, sealing, jet pipe ring	5	Rubber	C	
1510770	2.aO.3953	Shaft, quill for hydraulic pump (Mod. 2025)	1	—		NB1/123
	BRISTOL B326974	Spring, tension, outboard bay, port	1	—	MR	NB1/124
	14.O.3987	Spring, tension, outboard bay, starboard	1	—	MR	NB1/125
	15.O.3987	Spring, tension, inboard bay, port	1	—	MR	NB1/126
	16.O.3987	Spring, tension, inboard bay, starboard	1	—	MR	NB1/127
	17.O.3987					
37F/6080871	ROTAX CTO822/1	Starter (Mod. 2185)	1	—	A	NB2/128
		SYSTEM, ENGINE, RAPID START (1 & 2Q3664) (Mod. 1320) APPLICABLE TO 201 & 301 ENGINES				
		Spares for:—				
	44SS3563	Adaptor, special, at rear intermediate bulkhead connector and flexible pipe joint	2	—	MR	NB2/129
12257	246SS3553	Adaptor, union, at ON/OFF valve (Ref. No. 37F/19257)	2	S21	C	NB2/130
12223	8Q/3664	Block, connector charging	1	DTD130	C	NB2/131
12880	1Q3721	BLOCK, CONNECTOR, MULTI-WAY, GROUP (Mod. 1848)	1	—	C	NB2/132
		Consisting of:—				
	21Q3664	Adaptor, union, reducing	5	—	MR	NB2/133
12231	4SS5327	Adaptor, union	1	—	C	NB2/134
12232	8SS5327	Adaptor, union	2	—	C	NB2/135
	7Q3664	Block	1	—		
	M.L.AVIATION MLS902/A	Washer, sealing, ridged	7	—	MR	NB2/135A
	M.L.AVIATION MLS908/C	Washer, sealing, ridged	1	—	MR	NB2/136
6D/2008678	CHESTERFIELD B26767	Bottle, air (Mod. 1838)	5	—	A	NB2/137
	68Q3664	Bolt banjo, at charging connection	1	S94		NB2/138
	20Q3664	Bracket, angle, for multi-way connection block	2	L65		
17555	26Q3664	Bracket, mounting, for charging connection block	2	L72	C	
	40Q3664	Bracket, mounting, for ON/OFF valve (Ref. No. 37F19257)	2	S521		

POWER INSTALLATION

ENGINE

Ref. No.	Part No.	Description	No. off	Mati. Spec.	Cl. of St.	Plate and Illust'n No.
					M.R.	
		1 2 3 4				
		SYSTEM, ENGINE, RAPID START (1 & 2Q3664) (Mod. 1320) (Cont'd.)				
26TA/5677 28E/9712163	5SS2340	Clip, pipe	1	—	MR C C	
	6SS2340	Clip, pipe	1	—		
6A/7394	10SS5004	Clip, pipe	8	—		
	SP91/C	Clip, jubilee	1	—		
	17SS5004	Clip, pipe, starboard outer bay	1	—		
	67Q3664	Clip, pipe, port outer and starboard inner bay	1	—		
	SMITHS					
	EU.14ST.K004	Gauge, pressure (4000 P.S.I.)	1	—	A	NB2/139
	682SS6033	Label, warning (Mod. 1865)	7	L59	MR	NB2/140
	1SS5414	Nipple, for adaptor (44SS3563)	2	—	MR	NB2/141
	M.L.AVIATION					
	M.L.S.937/B	Olive, special, at 3/4" o/d pipe joints	6	—	MR	NB2/142
M.L.S.399/D	Olive, special, at charging block	2	—		NB2/143	
	9Q3664	PIPE, FROM MULTI-WAY CONNECTOR TO ON/OFF VALVE, INBOARD BAY, PORT, GROUP	1	—	MR	NB2/144
	10Q3664	PIPE, FROM ON/OFF VALVE TO UNION, ... INBOARD BAY, PORT, GROUP	1	—	MR	NB2/145
	11Q3664	PIPE, FROM MULTI-WAY CONNECTOR BLOCK TO UNION, OUTBOARD BAY, PORT, GROUP	1	—	MR	NB2/146
	12Q3664	PIPE, FROM ON/OFF VALVE TO UPPER UNION, OUTBOARD BAY, PORT, GROUP	1	—	MR	NB2/147
	13Q3664	PIPE, FROM ON/OFF VALVE TO INBOARD UNION, OUTBOARD BAY, PORT, GROUP	1	—	MR	NB2/148
12244	17Q3664	PIPE, ON RIB 63.5" INBOARD BAY, PORT, GROUP	1	—	C	NB2/149
12246	19Q3664	PIPE, ON RIB 113.3" OUTBOARD BAY, PORT, GROUP	1	—	C	NB2/150
12248	28Q3664	PIPE, TO CHARGING BLOCK, PORT, GROUP	1	—	C	NB2/151
	50Q3664	PIPE, TO CHARGING BLOCK, STARBOARD, GROUP	1	—	MR	NB2/152
	59Q3664	PIPE, FROM ON/OFF VALVE TO UPPER UNION, INBOARD BAY, STARBOARD, GROUP	1	—	MR	NB2/153

VULCAN Mk. 2

POWER INSTALLATION

Page NB. 11

ENGINE

Ref. No.	Part No.	Description	No. off	Mati. Spec.	Cl. of St.	Plate and Illust'n No.
					M.R.	
		1 2 3 4				
		SYSTEM, ENGINE, RAPID START (1 & 2Q3664) (Mod. 1320) (Cont'd.)				
12239	60Q3664	PIPE, FROM MULTI-WAY CONNECTOR BLOCK TO UNION, OUTBOARD, STARBOARD, GROUP	1	—	C	NB2/154
	61Q3664	PIPE, FROM ON/OFF VALVE TO INBOARD UNION, OUTBOARD BAY, STARBOARD, GROUP	1	—	MR	NB2/155
	62Q3664	PIPE, FROM MULTI-WAY CONNECTOR BLOCK TO ON/OFF VALVE, INBOARD BAY, STARBOARD, GROUP	1	—	MR	NB2/156
	63Q3664	PIPE, FROM ON/OFF VALVE TO INBOARD UNION, INBOARD BAY, STARBOARD, GROUP	1	—	MR	NB2/157
12247	64Q3664	PIPE, ON RIB 113.3" INBOARD BAY, STARBOARD, GROUP	1	—	C	NB2/158
12245	65Q3664	PIPE, ON RIB 162.5" INBOARD BAY, STARBOARD, GROUP	1	—	C	NB2/159
12224	POWER AUXILIARIES 556/1/03539/001	Pipe, flexible, at rear intermediate engine bulkhead (Mod. 1844)	1	—	B	NB2/160
	DUNLOP AHO/71787/14	Pipe, flexible, from multi-way block to inner air bottles (Mod. 1844)	2	—	MR	NB2/161
	DUNLOP AHO/71786/24	Pipe, flexible, from multi-way block to outer air bottles (Mod. 1844)	2	—	MR	NB2/162
	DUNLOP AHO/71786/46	Pipe, flexible, from multi-way block to auxiliary air bottle (Mod. 1844)	1	—	MR	NB2/163
	103Q3664	Plate, locking, for charging valve	1	S94		NB2/164
	107Q3664	PLATE, COVER, ABOVE ON/OFF VALVE AT RIB 113.3", PORT AND STARBOARD, GROUP	1	—		
	108Q3664	PLATE, COVER, ABOVE ON/OFF VALVE AT RIB 162.5", OUTBOARD BAY, PORT, GROUP	1	—		
	109Q3664	PLATE, COVER, ABOVE ON/OFF VALVE AT RIB 63.5", INBOARD BAY, STARBOARD, GROUP	1	—		
	32Q3664	PLATE, SEALING, AT COVER PLATES	2	S521		

POWER INSTALLATION

ENGINE

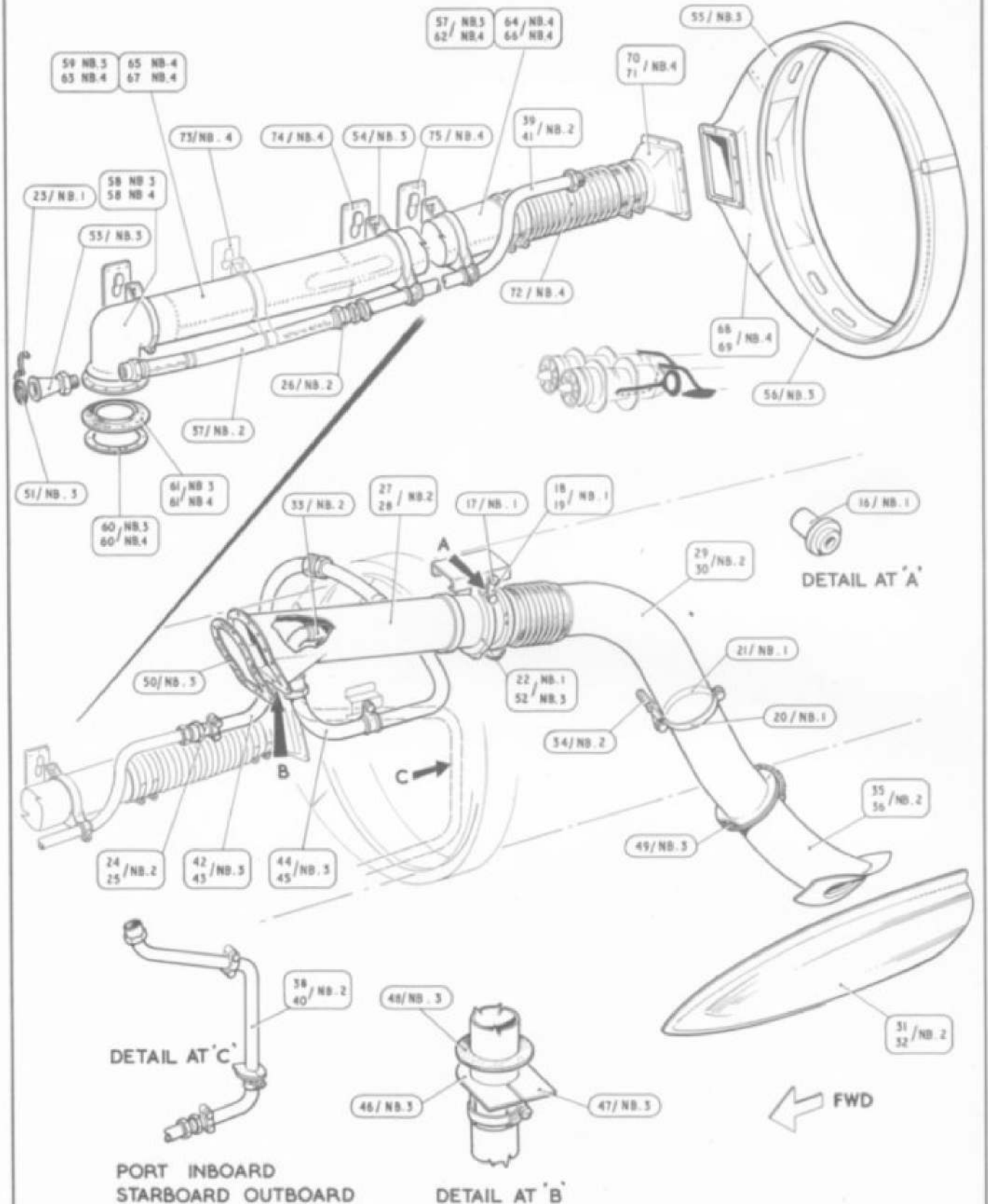
Ref. No.	Part No.	Description	No. off	Matl. Spec.	Cl. of St.	Plate and Illust'n No.
					M.R.	
		1 2 3 4				
		SYSTEM, ENGINE RAPID START (1 & 2Q3664) (Mod. 1320) (Cont'd)				
	43Q3664	POINT, STOWAGE, FOR FLEXIBLE PIPES, GROUP	1	—		NB2/165
	33Q3664	Seal, asbestos, at sealing plate	2	DTD378A	MR	NB2/166
	110Q3664	Shield, heat, for ON/OFF valve	2	—	MR	NB2/167
		STRUCTURE, MOUNTING FOR AIR BOTTLES, PORT AND STARBOARD (1 & 2Z10493)	—	—		
	7Z10493	Spares for:— CONTAINER, AIR BOTTLE, GROUP	5	—		NB2/168
12259	8Z10493	Spares for:— STOP, END, GROUP	1	—	C	NB2/169
	24Z10493	STRAP, SUPPORT, GROUP	10	—	MR	NB2/170
		Spares for:—				
26FP/1999	3SS1944	Cross-head, R.H.	1	—	C	
26FP/2005	4SS1944	Cross-head, L.H.	1	—	C	
26FP/2001	1SS1942	End, strap	2	—	C	
	1SS1945	Screw, adjusting	1	—		NB2/170A
12251	265SS3553	Union, at flexible metal pipe	2	—	C	NB2/171
28Y/15486	AGS2096/B	Valve, charging	1	—	B	NB2/172
2995-99-4468721	M4818	Valve ON/OFF, electrically operated	2	—	A	NB2/173
	HYMATIC					
27VB/6042	RAV205/005	Valve, system relief (Pre-Mod. 1936)	1	—	A	NB2/174
27VB/6241	RAV205/012	Valve, system relief (Mod. 1936)	1	—	A	
	M.L. AVIATION					
12256	MLS904/A	Washer, sealing, ridged at ON/OFF valve unions	2	—	C	NB2/175
	1SS5432	Washer, special, at charging valve	1	—	MR	NB2/176
	2SS5432	Washer, special, at banjo bolt	2	—	MR	NB2/177
	1SS3413	Washer, special, at pressure gauge	1	—	MR	NB2/178
	19.O.3887	TUBE, OUTLET, OUTBOARD BAY, PORT, GROUP (Pre-Mod. 2053)	1	—	MR	NB1/179
17383	23.O.3987	TUBE, OUTLET OUTBOARD BAY, PORT, GROUP (Mod. 2053)	1	—	C	
	20.O.3987	TUBE, OUTLET INBOARD BAYS, PORT AND STARBOARD, GROUP (Pre-Mod. 2053)	2	—	MR	NB1/180

VULCAN Mk. 2

POWER INSTALLATION
ENGINE

Page NB. 13

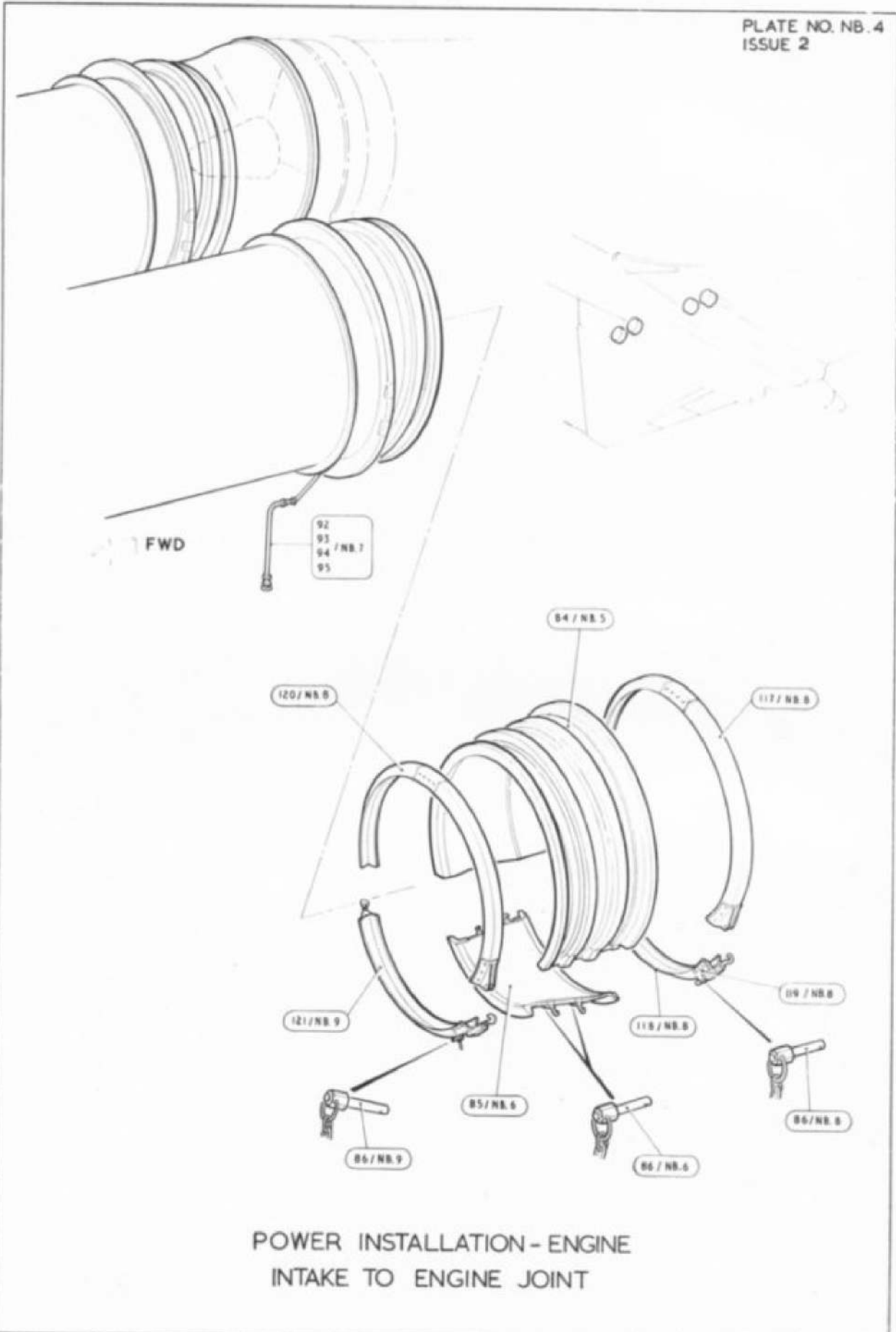
Ref. No.	Part No.	Description	No. off	Matl. Spec.	Cl. of	Plate and Illust'n No.
					St. M.R.	
		1 2 3 4				
17384	24.O.3987	TUBE, OUTLET, INBOARD BAY, PORT, GROUP (Mod. 2053)	1	—	C	
17385	25.O.3987	TUBE, OUTLET, INBOARD BAY, STAR- BOARD, GROUP (Mod. 2053)	1	—	C	
	21.O.3987	TUBE, OUTLET, OUTBOARD BAY, STAR- BOARD, GROUP (Pre-Mod. 2053)	1	—	C	NB1/181
17382	22.O.3987	TUBE, OUTLET, OUTBOARD BAY, STAR- BOARD, GROUP (Mod. 2053)	1	—	C	
	—	UNIT, ADJUSTING, FORWARD JET PIPE ROLLER (1 O.4147) (Mod. 1033)	—	—		
	16Q3664	Spares for:— BRACKET, SHIM STOWAGE	1	—		NB1/182
	3.O.4147	GUIDE, GROUP	1	—	MR	NB1/183
12536	5.O.4147	Packing, 18G x 3" x 3 7/8"	1	S521	MR	NB1/184
	6.O.4147	Packing, 14G x 3" x 3 7/8"	1	S521	C	NB1/185
	7.O.4147	Packing, 10G x 3" x 3 7/8"	1	S521	MR	NB1/186
	4.O.4147	Slide portion	1	S521	MR	NB1/187
	ENG. ELECT.					
37L/4521707	AE8004	Unit, sundstrand	1	—	A	NB1/188
37F/4382748	M8601	Valve, non-return	1	—	A	NB1/189
37F/4382747	M4005	Valve, pressure reducing	1	—	A	NB1/190
37F/4382746	M5621	Valve, control, low pressure (Mod. 1790)	1	—	A	NB1/191



POWER INSTALLATION - ENGINE
COOLING

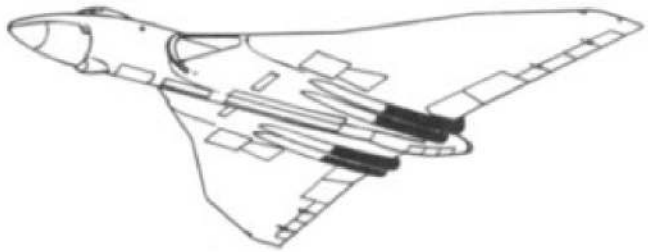
RESTRICTED

PLATE NO. NB. 4
ISSUE 2

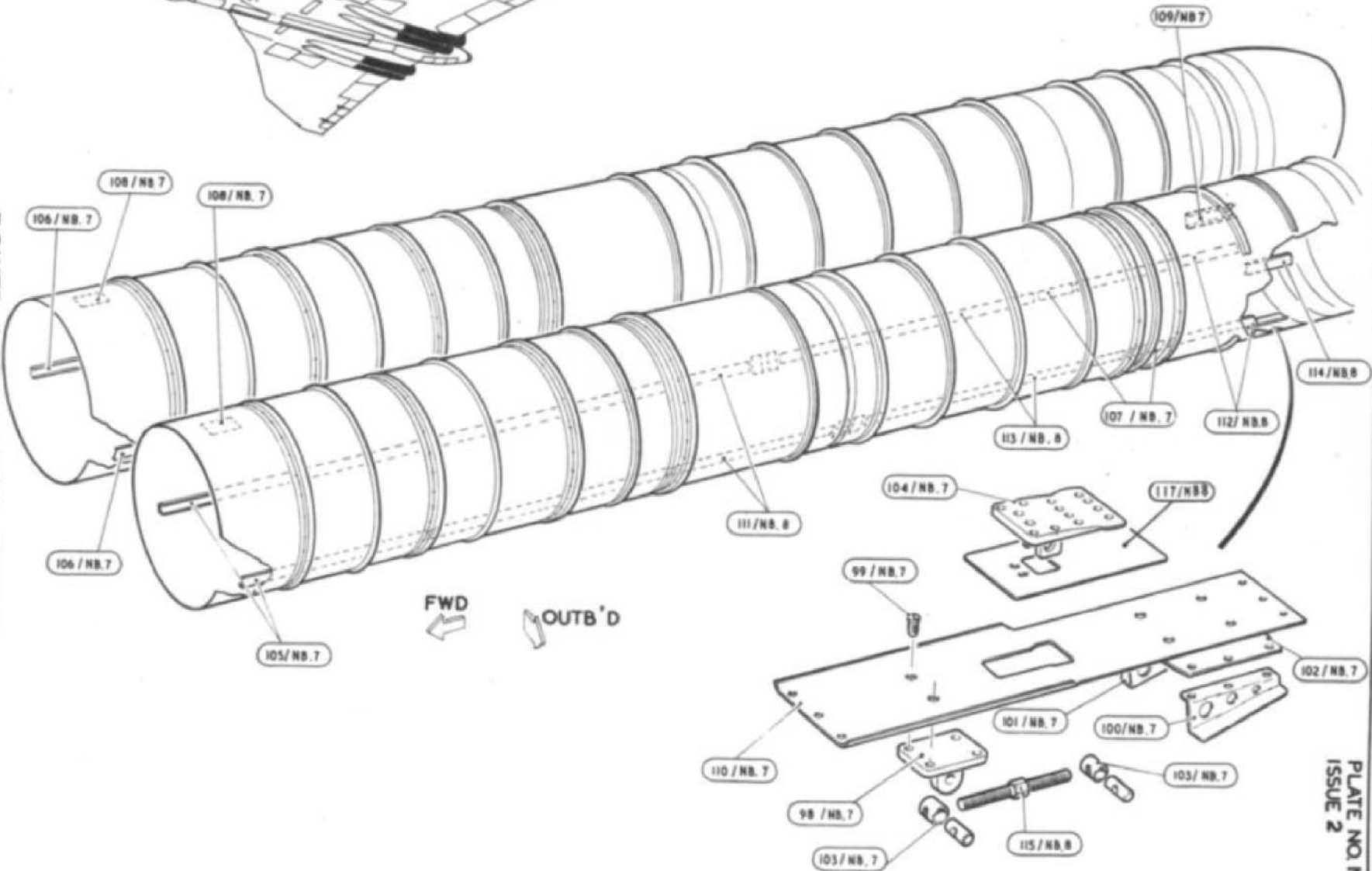


POWER INSTALLATION-ENGINE
INTAKE TO ENGINE JOINT

RESTRICTED



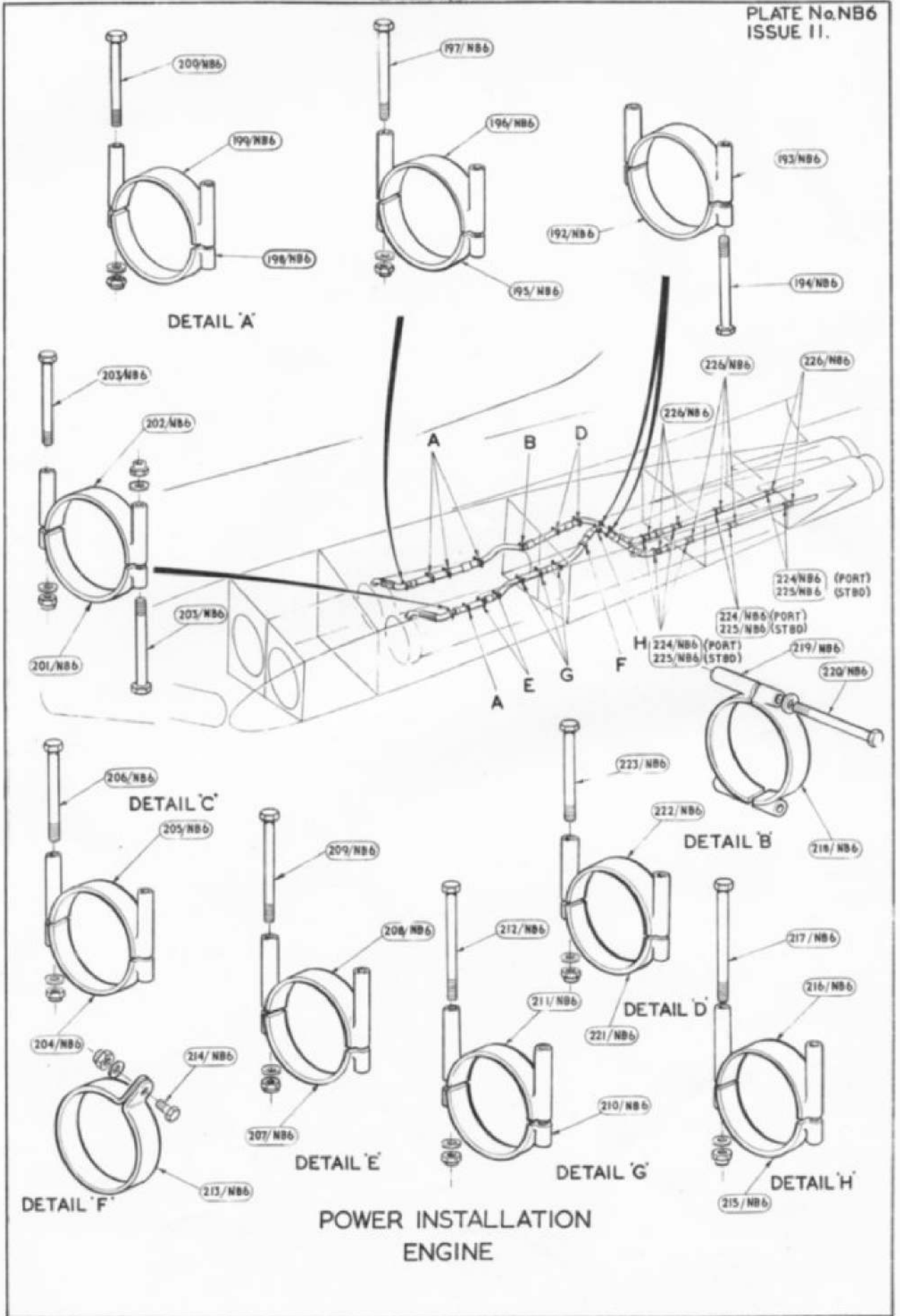
POWER INSTALLATION-ENGINE
JET PIPE GUIDE RAIL



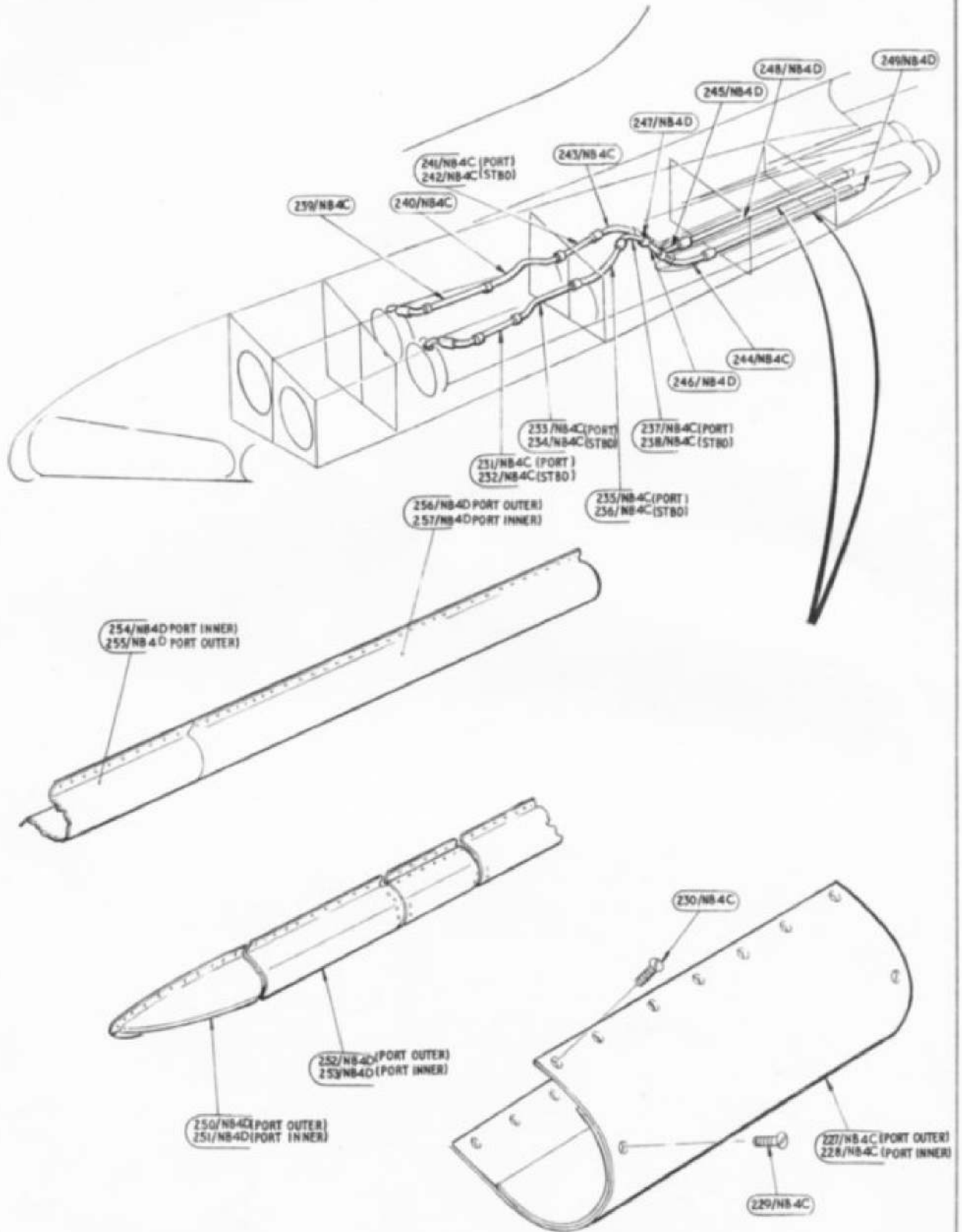
RESTRICTED

RESTRICTED

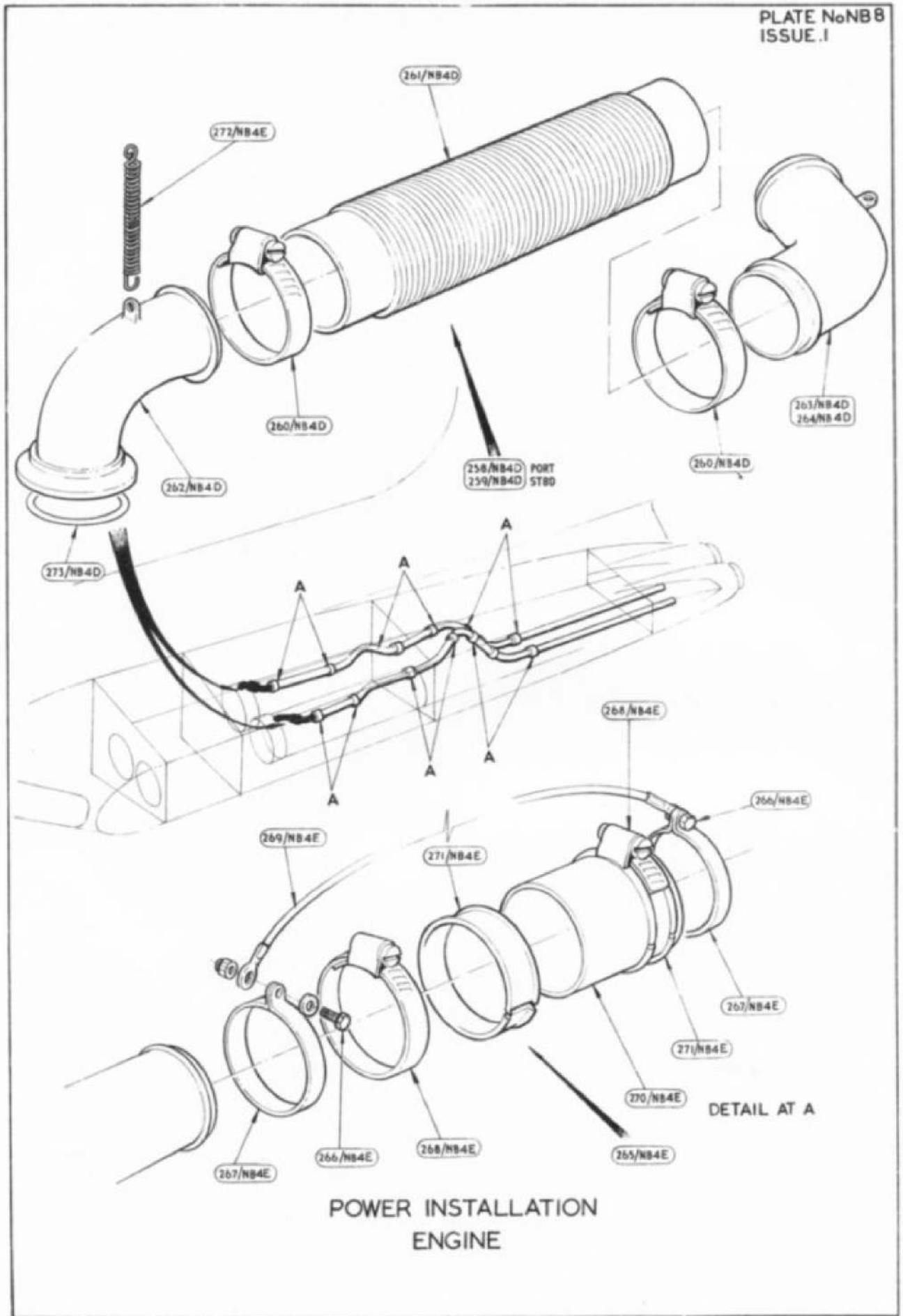
PLATE NO. NB.5
ISSUE 2



POWER INSTALLATION
ENGINE



POWER INSTALLATION
ENGINE



POWER INSTALLATION
ENGINE

This file was downloaded
from the RTFM Library.

Link: www.scottbouch.com/rtfm

Please see site for usage terms,
and more aircraft documents.

