

VULCAN Mk. 2

SERVICES

Page QB. 1

AIR SPEED INDICATOR

Ref. No.	Part No.	Description	No. off	Mati. Spec.	Cl. of St.	Plate and Illust'n No.
					M.R.	
		1 2 3 4				
		AIR SPEED INDICATOR SYSTEM (S2167, S2165, Q2211 & Q2212)				
		Spares for:—				
	24SS3555	Adaptor, stowage, at N.B.S. calculator	1	—		QB1/1
		Attachments for Adaptor (24SS3555)				
28D/1010658	A25/1B	Bolt, 2 BA	3	—	C	
28W/9419474	SP15/B	Washer, 2 BA	3	—	C	
28M/1278189	AGS2001/B/1	Nut, stiff, 2 BA	3	—	C	
12439	25SS3555	Adaptor, stowage, at M.F.S. unit	1	—	C	QB1/2
		Attachments for Adaptor (25SS3555)				
28D/1010658	A25/1B	Bolt	3	—	C	
28W/9419474	SP15/B	Washer	3	—	C	
28M/1278189	AGS2001/B/1	Nut	3	—	C	
9007	3SS3859	Clip, pipe	44	—	C	
	22SS3859	Clip, pipe	4	—		
	24SS3859	Clip, pipe	2	—		
26FP/2721	2SS3859	Clip, pipe	1	—	C	
20019	174SS2557	Connector, special (Pre-Mod. 658)	2	—	C	QB2/3
20019	174SS3557	Connector, special (Mod. 658)	1	—	C	
	15SS3569	Elbow, special, at M.F.S. unit	1	—	MR	QB1/4
20020	16SS3569	Elbow	2	DTD130	C	QB2/5
20021	17SS3569	Elbow	2	DTD130	C	QB2/6
11704	12SS3569	Elbow, special	2	—	C	
	25Z3224	FAIRLEAD, GROUP	65	—	MR	QB2/7
		Consisting of:—				
		Bonding	AR	L4		
28D/1010030	A25/7C	Bolt, 2 BA	1	—	C	
	25aZ3224	Fairlead, half	2	BSS668		
28M/1012015	AGS2001/C1/66	Nut, stiff, 2 BA	1	—	C	
28W/9419475	SP15/C	Washer, 2 BA	1	—	C	
	15D9882	FAIRLEAD, GROUP	1	—		
		Consisting of:—				
		Bonding	AR	L4		
28D/1010030	A25/7C	Bolt, 2 BA	2	—	C	
	15aD9882	Fairlead, half	2	BSS668		
28M/1012015	AGS2001/C1/66	Nut, stiff	2	—	C	
28W/9419475	SP15/C	Washer	2	—	C	
	34Q1953	FAIRLEAD, GROUP	2	—	MR	QB1/9
		Consisting of:—				
		Bonding	AR	L4		
28D/1011019	34hQ1953	Bolt, 2 BA	1	—	C	
	A25/8C	Fairlead, half	2	BSS668		
	34aQ1953	Nut, stiff, 2 BA	1	—	C	
28M/1012015	AGS2001/C1/66	Washer, 2 BA	1	—	C	
28W/9419475	SP15/C					

SERVICES
AIR SPEED INDICATOR

Ref. No.	Part No.	Description	No. off	Matl. Spec.	Cl. of St.	Plate and Illust'n No.
					M.R.	
		1 2 3 4				
		AIR SPEED INDICATOR SYSTEM (S2167, S2165, Q2211 & Q2212) (Cont'd.)				
20023	23S2167	FAIRLEAD, GROUP (Mod. 1073)	1	—	C	QB1/10
		Consisting of:—				
	34bQ1953	Bonding	AR	L16		
28D/9133014	A25/13C	Bolt, 2 BA	1	—	C	
	34aQ1953	Fairlead, half	2	BS2572		
28M/1012015	AGS2001/C1/66	Nut, stiff, 2 BA	1	—	C	
	AS2811/5/05	Tube, distance	1	—		
28W/9419475	SP15/C	Washer, 2 BA	1	—	C	
20024	24S2167	FAIRLEAD, GROUP (Mod. 1073)	1	—	C	QB3/11
		Consisting of:—				
	24bS2167	Bonding	AR	L16		
28D/1010030	A25/7C	Bolt, 2 BA	1	—	C	
	24aS2167	Fairlead, half	2	BS2572		
28M/1012015	AGS2001/C1/66	Nut, stiff, 2 BA	1	—	C	
28W/9419475	SP15/C	Washer, 2 BA	1	—	C	
	60S1927	FAIRLEAD, GROUP	5	—		QB6/12
		Consisting of:—				
	60bS1927	Bonding	AR	L4		
28D/9133014	A25/13C	Bolt, 2 BA	2	—	C	
	60aS1927	Fairlead, half	2	BSS668		
28M/1012015	AGS2001/C1/66	Nut, stiff, 2 BA	2	—	C	
28W/9419402	SP13/C	Washer, 2 BA	2	—	C	
	22S2167	FAIRLEAD, GROUP (Mod. 1078)	1	—		QB6/13
		Consisting of:—				
	22bS2167	Bonding	AR	L4		
28D/1010030	A25/7C	Bolt, 2 BA	1	—	C	
	22aS2167	Fairlead, half	2	BSS668		
28M/1012015	AGS2001/C1/66	Nut, stiff, 2 BA	1	—	C	
28W/9419402	SP13/C	Washer	1	—	C	
22034	34Q1885	FAIRLEAD, GROUP	16	—	C	QB4/14
		Consisting of:—				
	25cQ1885	Bonding	AR	L16		
28D/1010030	A25/7C	Bolt, 2 BA	1	—	C	
	25aQ1885	Fairlead, half	2	BSS668		
28M/1012015	AGS2001/C1/66	Nut, stiff, 2 BA	1	—	C	
28W/9419475	SP15/C	Washer, 2 BA	1	—	C	
	25Q1885	FAIRLEAD, GROUP	7	—		QB4/15
		Consisting of:—				
	25cQ1885	Bonding	AR	L16		
28D/7002428	A25/6C	Bolt, 2 BA	2	—	C	
	25aQ1885	Fairlead, half	2	BSS668		
28M/1012015	AGS2001/C1/66	Nut, stiff, 2 BA	2	—	C	
28W/9419475	SP15/C	Washer, 2 BA	2	—	C	
	10Q2212	FAIRLEAD, GROUP	3	—		QB3/16
		Consisting of:—				
	10cQ2212	Bonding	AR			
28D/9140645	A25/10C	Bolt, 2 BA	2	—	C	
	10aQ2212	Fairlead, half	2	—		
28M/1012015	AGS2001/C1/66	Nut, stiff, 2 BA	2	—	C	
28W/9419475	SP15/C	Washer, 2 BA	2	—	C	

VULCAN Mk. 2

SERVICES
AIR SPEED INDICATOR

Page QB. 3

Ref. No.	Part No.	Description	No. off	Matl. Spec.	Cl. of St.	Plate and Illust'n No.
					M.R.	
			1	2	3	4
AIR SPEED INDICATOR SYSTEM (S2167, S2165, Q2211 AND Q2212) (Cont'd)						
	14Q2212	FAIRLEAD, GROUP	1	—		QB6/17
			Consisting of:—			
	14bQ2212	Bonding	AR	L4		
28D/1010030	A25/7C	Bolt, 2 BA	1	—	C	
	14aQ2212	Fairlead, half	2	BSS668		
28M/1012015	AGS2001/C1/66	Nut, stiff, 2 BA	1	—	C	
28W/9419475	SP15/C	Washer, 2 BA	1	—	C	
MOUNTING, V.G. RECORDER AT BOMB ARCH 123.015" (S2301) (Mod. 893)						
			Spares for:—			
9007	3SS3859	Clip	2	—	C	QB6/18
			Attachments for Clip (3SS3859)			
28D/9133011	A25/2C	Bolt, 2 BA	1	—	C	
28M/1012015	AGS2001/C1/66	Nut, stiff, 2 BA	1	—	C	
28W/9419475	SP15/C	Washer, 2 BA	1	—	C	
VICKERS						
27F/6251646	D1885	Cock, special, 4-way	1	—	A	QB6/19
	13aQ1627	Fairlead, half	4	BSS668		QB6/20
			Attachments for Fairlead (13aQ1627)			
28D/9419397	A25/12C	Bolt, 2 BA	2	—	C	
28M/1012015	AGS2001/C1/66	Nut, stiff, 2 BA	2	—	C	
28W/9419475	SP15/C	Washer, 2 BA	2	—	C	
22151	AS2800/5/050	Piece, distance	2	—		QB6/21
	7S2301	Piece, distance	3	—	C	QB6/22
	4S2301	Pipe, stub, 5/16" o/d x 1.75" long	2	L56		QB6/23
11151	201S2165	PIPE, STUB, GROUP	2	—	C	QB6/23a
	6S2301	Pipe, flexible, 7" long (Pre-Mod. 658)	2	—		
	109S2165	Pipe, flexible, 7" long (Mod. 658)	2	—		QB6/24
	236S1980	PIPE, 1/4" O/D x 22G x 30", 4-WAY COCK TO REDUCING UNION, STATIC LINE, GROUP	1	L56		QB6/25
	237S1980	PIPE, 5/16" O/D x 22G x 36" REDUCING UNION TO TEE PIECE, STATIC LINE, GROUP	1	L56		QB6/26
	240S1980	PIPE, 1/4" O/D x 22G x 30", 4-WAY COCK TO REDUCING UNION, PRESSURE LINE, GROUP	1	L56		QB6/27
	123S2165	PIPE, 5/16" O/D x 22G x 36" REDUCING UNION TO TEE-PIECE, PRESSURE LINE, GROUP	1	L56	C	QB6/28
22150	5S2301	PLATE, MOUNTING, 4-WAY COCK, GROUP	1	—	C	QB6/29
			Attachments for Plate (5S2301)			
	A59/25C	Bolt	1	—	C	
	A59/28C	Bolt	2	—	C	
28M/1012015	AGS2001/C1/66	Washer	3	—	C	
	SP15/C	Nut	3	—	C	

SERVICES
AIR SPEED INDICATOR

Ref. No.	Part No.	Description	No. off	Mati. Spec.	Cl. of	Plate and Illust'n No.
					St.	
		1 2 3 4				
8811	1T4/3/18 1Z9183 24Q1864	MOUNTING, V.G. RECORDER AT BOMB ARCH 123.015 (S2301) (Mod. 893) (Cont'd)				
		Recorder, V.G.	1	—	C	QB6/30
		Stud, special, 1.4" long	2	DTD310		
		Tube, distance, special	3	T35		QB6/31
		MOUNTING, AIR SPEED SWITCH AND A.S.J. PIPES (S2370)				
	5S2370	Spares for:— FAIRLEAD, GROUP (Mod. 1841)	1	—		QB5/32
		Consisting of:—				
28D/9435710	5dS2370	Bonding	1	L16 or L4		
	A25/11C	Bolt, 2 BA	1	—	C	
	5aS2370	Fairlead, part	1	BS2572		
	5bS2370	Fairlead, part	1	BS2572		
	5cS2370	Fairlead, part	1	BS2572		
28M/1012015	AGS2001/C1/66	Nut, stiff, 2 BA	1	—	C	
28W/9419475	SP15/C	Washer, 2 BA	1	—	C	
	6V8841	MOUNTING, SWITCH, GROUP	1	—		QB5/33
10AJ/130	—	Mounting, A.V.	4	—	B	QB5/34
	88S2165	PIPE, PRESSURE, GROUP	1	L56		QB5/35
	202S2165	PIPE, STATIC, GROUP (Mod. 1841)	1	L56		QB5/36
13704	5SS4996	PIPE, flexible, static (Mod. 1841)	1	—	C	QB5/37
13705	5SS5001	Pipe, flexible, pitot (Mod. 1841)	1	—	C	QB5/38
6A/8165	—	Switch, air speed (Mod. 1841)	1	—	A	QB5/39
10A/19429	—	Washer, check	4	—	C	
		MOUNTING, STATIC VENTS, PORT AND STARBOARD (1 & 2S2372)				
		Spares for:—				
17433	3S2372	VENT, STATIC, PORT, GROUP	1	—	C	QB1/40
1433901	4S2372	VENT, STATIC, STARBOARD, GROUP	1	—		QB1/41
		MOUNTING, PITOT HEADS, PORT AND STARBOARD (21 & 22Z9723) (Mod. 2442)				
		Spares for:—				
7793	1V9396	BLOCK, TERMINAL, FORWARD, GROUP	1	—	C	QB5/42
		Spares for:—				
	3V9396	Cover	2	—		
	1V9397	BLOCK, TERMINAL, AFT, GROUP	1	—	MR	QB5/43
		Spares for:—				
	3V9397	Cover	—	—		
	17Z9722	Bolt, hex. hd., attachment of terminal blocks (Made from A25/1C)	8	—		QB5/44
	7Z9722	Coupling, pipe, flanged	1	DTD130		QB5/45
	5Z9722	Gasket, forward terminal block	1	DTD789		QB5/46
	6Z9722	Gasket, aft terminal block	1	DTD789		QB5/47
	8Z9722	Gasket, pipe coupling	1	DTD789		QB5/48

VULCAN MR. 2

SERVICES

Page QB. 5

AIR SPEED INDICATOR

Ref. No.	Part No.	Description	No. off	Matl. Spec.	Cl. of St.	Plate and Illust'n No.
					M.R.	
		1 2 3 4				
		MOUNTING, PITOT HEADS, PORT AND STARBOARD (21 & 22Z79723) (Mod. 2442) (Cont'd)				
	13Z9723	MAST, PITOT, PORT, GROUP (Pre-Mod. 2330)	1	—		
		Spares for:—				
1433997	3Z9723	PLATE, mounting	1	L72	C	
1433176	4Z9723	Plate, mounting	1	L72	C	
	25Z9723	MAST, PITOT, PORT, GROUP (Mod. 2442)	1	—		QB5/49
	26Z9723	MAST, PITOT, STARBOARD, GROUP (Mod. 2442)	1	—		QB5/50
		Spares for:—				
6A/13990	851BA Mod. 2	HEAD, PRESSURE, GROUP (Mod. 2442)	1	—	B	QB5/51
	3Z8432	MOUNTING, PITOT HEAD, PORT, GROUP	1	—	MR	QB5/52
	4Z8432	MOUNTING, PITOT HEAD, STARBOARD, GROUP	1	—	MR	QB5/53
7792	13Z9722	PIPE, FLEXIBLE, GROUP	1	—	C	QB5/54
	1S2316	PANEL, MONITOR, BETWEEN FORMERS 260" AND 232" STARBOARD, GROUP (Pre-Mod. 698)	1	—		
		Spares for:—				
	12S2316	Bracket, connector	1	—		
	13S2316	Bracket, connector	1	—		
	11S3569	Connector, special	5	—		
	NEWMARK					
	NID860	Panel, monitor, less pipes	1	—		
	2S2316	Pipe, 5/16" o/d x 22G, aft bottom connection to tee-piece	1	L56		
	3S2316	Pipe, 5/16" o/d x 22G between tee-pieces in line to aft bottom connection	1	L56		
	4S2316	Pipe, 5/16" o/d x 22 SWG between tee-piece	6	L56		
	5S2316	Pipe, 5/16" o/d x 22G centre aft connection to tee-piece	—	—		
	6S2316	Pipe, 5/16" o/d x 22G elbow to bottom forward connection	1	L56		
	7S2316	Pipe, 5/16" o/d x 22G tee-piece to top forward connection	1	L56		
	8S2316	Pipe, 5/16" o/d x 22G bottom elbow to tee-piece in line to top forward connection	1	L56		
	9S2316	Pipe, 5/16" o/d x 22G, tee-piece to top aft connection	1	L56		
	10S2316	Pipe, 5/16" o/d x 22G between tee-pieces in line to top aft connection	1	L56		
	11S2316	Pipe, 5/16" o/d x 22G between tee-pieces in line to top connection	1	L56		

SERVICES
AIR SPEED INDICATOR

Ref. No.	Part No.	Description	No. off	Matl. Spec.	Cl. of St.	Plate and Illust'n No.
					M.R.	
		1 2 3 4				
		AIR SPEED INDICATOR SYSTEM (S2167), S2165, Q2211 AND Q2212) (Cont'd)				
	NEWMARK NID1357	PANEL, MONITOR, BETWEEN FORMERS ... 260" AND 232", STARBOARD, GROUP (Mod. 698)	1	—		QB5/55
8511	2Q2213	PANEL, SUPPLY AND STOWAGE FOR A.S.I. PIPES TO T4 BOMB SIGHT COMPUTOR (Q2213) Spares for:— PANEL, SUPPLY AND STOWAGE GROUP	1	—	C	QB5/56
8512	4Q2075	Spares for:— PIPE, FLEXIBLE, WITH 5/16" ADAPTOR, GROUP	2	—	C	QB5/57
8513	5Q2075	PIPE, FLEXIBLE, WITH 3/8" ADAPTOR, GROUP	1	—	C	QB5/58

SERVICES
AIR SPEED INDICATOR

Ref. No.	Part No.	Description	No. off	Matl. Spec.	Cl. of St.	Plate and Illust'n No.
					M.R.	
		1 2 3 4				
		AIR SPEED INDICATOR SYSTEM (S2167, S2165, Q2211 & Q2212) (Cont'd)				
	138S2165	PIPE, STATIC, 5/16" o/d x 22G x 20", No. 2 STATIC VENT TO TEE-PIECE, STARBOARD, GROUP	1	L56		QB1/61
	137S2165	PIPE, STATIC, 5/16" o/d x 22G x 46", TEE-PIECE TO UNION AT No. 2 STATIC VENT, PORT, GROUP	1	L56		QB1/62
	139S2165	PIPE, STATIC, 5/16" o/d x 22G x 19" TEE-PIECE TO No. 1 STATIC VENT, PORT, GROUP	1	L56		QB1/63
	140S2165	PIPE, STATIC, 5/16" o/d x 22G x 50", TEE-PIECE TO No. 1 STATIC VENT, PORT, GROUP	1	L56		QB1/64
	142S2165	PIPE, STATIC, 5/16" o/d x 22G, FORWARD OF FORMER 442 TO COUPLING AFT OF FORMER 386, STARBOARD, GROUP	1	L56		QB1/65
	141S2165	PIPE, STATIC, 5/16" o/d x 22G, FORWARD OF FORMER 442 TO COUPLING AFT OF FORMER 386, PORT, GROUP	1	L56		QB1/66
	11S2165	PIPE, STATIC, 5/16" o/d x 22G x 48", TEE-PIECE AFT OF FORMER 372" TO COUPLING AFT OF FORMER 386", PORT, GROUP	1	L56		QB1/67
	6S2165	PIPE, STATIC, 5/16" o/d x 22G x 11", TEE-PIECE AFT OF FORMER 372" TO TEE-PIECE AFT OF FORMER 358, PORT, GROUP	1	-		QB1/68
	60S1980	PIPE, DRAIN, 5/16" o/d x 22G x 7", PORT, GROUP (Pre-Mod. 1073)	1	L56		
	182S2165	PIPE, DRAIN, 3/8" o/d x 22G x 5", PORT, . . . GROUP (Mod. 1073)	1	L56		QB1/69
	136S2165	PIPE, STATIC, 5/16" o/d x 22G x 90", COUPLING AFT OF FORMER 344" TO TEE-PIECE AFT OF FORMER 470", PORT, GROUP	1	L56		QB1/70
	58S2165	PIPE, STATIC, 5/16" o/d x 22G x 20", TEE-PIECE TO UNION FWD. OF FORMER 358", PORT, GROUP	1	L56		QB1/71
1432989	209S2165	PIPE, STATIC, 3/8" o/d x 22G, TRANS-DUCER UNIT (T.F.R.) TO CROSSPIECE, STARBOARD, GROUP (Mod. 2057)	1	L56	C	QB1/72
1432990	210S2165	PIPE, PRESSURE, 5/16" o/d x 22G, TRANS-DUCER UNIT (T.F.R.) TO UNION, STARBOARD, GROUP (Mod. 2057)	1	L56	C	QB1/73
1432988	208S2165	PIPE, PRESSURE, 5/16" o/d x 22G, UNION TO TEE-PIECE, STARBOARD, GROUP (Mod. 2057)	1	L56	C	QB1/74

VULCAN Mk. 2

SERVICES
AIR SPEED INDICATOR

Page QB. 7

Ref. No.	Part No.	Description	No. off	Matl. Spec.	Cl. of St.	Plate and Illust'n No.
					M.R.	
		1 2 3 4				
		AIR SPEED INDICATOR SYSTEM (S2167, S2165, Q2211 & Q2212) (Cont'd)				
	207S2165	PIPE, PRESSURE, $\frac{3}{16}$ " o/d \times 22G, UNION TO TEE-PIECE AT PRESSURE BULKHEAD, STBD., GROUP (Mod. 1900)	1	L56		QB1/75
	203S2165	PIPE, STATIC, $\frac{3}{8}$ " o/d \times 22G, TRANSDUCER UNIT TO TEE-PIECE, STBD., GROUP (Mod. 1900)	1	L56		QB1/76
	204S2165	PIPE, STATIC, $\frac{1}{8}$ " o/d \times 22G, TEE-PIECE, TO BULKHEAD ADAPTOR, STARBOARD, GROUP (Mod. 1900)	1	L56		QB1/77
	206S2165	PIPE, PRESSURE, $\frac{1}{8}$ " 22G, TRANSDUCER UNIT TO UNION, STBD., GROUP (Mod. 1900)	1	L56		QB1/78
	205S2165	PIPE, STATIC, $\frac{1}{8}$ " o/d \times 22G, TEE-PIECE TO CROSS-PIECE AT PRESSURE BULKHEAD, STBD., GROUP (Mod. 1900)	1	L56		QB1/79
	135S2165	PIPE, STATIC, $\frac{3}{8}$ " o/d \times 22G \times 88", TEE-PIECE AFT OF FORMER 470" TO ADAPTOR FORWARD OF FORMER 372" STBD., GROUP	1	L56		QB1/80
	60S1980	PIPE, DRAIN, $\frac{1}{8}$ " o/d \times 22G \times 7", FORWARD PRESSURE BULKHEAD, STBD, GROUP	1	L56		QB1/81
	52S2165	PIPE, STATIC, $\frac{1}{8}$ " o/d \times 22G \times 11", TEE-PIECE AT FORMER 372" TO TEE-PIECE AFT OF FORMER 358", STBD, GROUP	1	L56		QB1/82
	53S2165	PIPE, STATIC, $\frac{1}{8}$ " o/d \times 22G \times 24", TEE-PIECE TO UNION AFT OF FORMER 358", STBD, GROUP	1	L56		QB1/83
	54S2165	PIPE, STATIC, $\frac{1}{8}$ " o/d \times 22G \times 24", TEE-PIECE AFT OF FORMER 358" TO TEE-PIECE AFT OF FORMER 344", STBD, GROUP	1	L56		QB1/84
	56S2165	PIPE, PRESSURE, $\frac{1}{8}$ " o/d \times 22G \times 26", TEE-PIECE TO UNION, AFT OF FORMER 358", STB, GROUP	1	L56		QB1/85
	55S2165	PIPE, PRESSURE, $\frac{1}{8}$ " o/d \times 22G \times 19", UNION TO TEE-PIECE AFT OF FORMER 358", STBD, GROUP	1	L56		QB1/86
	115S2165	PIPE, PRESSURE, $\frac{1}{8}$ " o/d \times 22G, TEE-PIECE TO TEE-PIECE, AFT OF FORMER 358", STBD, GROUP	1	L56		QB1/87
	46S1980	Pipe, flexible, $\frac{1}{4}$ " i/d, aft of former 358", stbd. (Pre Mod. 658)	1	—		

SERVICES
AIR SPEED INDICATOR

Ref. No.	Part No.	Description				No. off	Matl. Spec.	Cl. of St.	Plate and Illust'n No.
		1	2	3	4			M.R.	
11546		AIR SPEED INDICATOR SYSTEM (S2167, S2165, Q2211 & Q2212) (Cont'd)							
	108S2165	Pipe, flexible, $\frac{1}{4}$ " i/d, aft of former 358", stbd. (Mod. 658)				1	—		QB1/88
	101S2165	PIPE, STUB, $\frac{5}{16}$ " o/d \times 22G \times 8", AFT OF FORMER 358", STBD, GROUP				1	L56	C	QB1/89
	37S2165	PIPE, PRESSURE, $\frac{5}{8}$ " o/d \times 22G \times 16", TEE-PIECE AFT OF FORMER 358" TO TEE-PIECE AFT OF FORMER 344", STBD, GROUP				1	L56		QB1/90
	117S1980	PIPE, STATIC, $\frac{5}{16}$ " o/d \times 22G \times 32", TEE-PIECE AFT OF FORMER 344" TO ADAPTOR AT FORMER 316", STBD, GROUP				1	L56		QB2/91
	159S1980	PIPE, PRESSURE, $\frac{5}{16}$ " o/d \times 22G \times 34", TEE-PIECE AFT OF FORMER 344" TO ADAPTOR AT FORMER 316", STBD, GROUP				1	L56		QB2/92
	2S2889	PIPE, PRESSURE, $\frac{3}{16}$ " o/d \times 22G, ADAPTOR AT FORMER 316" TO TEE-PIECE AFT OF FORMER 288", STBD, GROUP (Mod. 1696)				1	L56		QB2/93
	3S2889	PIPE, STATIC, $\frac{3}{16}$ " o/d \times 22G, ADAPTOR AT FORMER 316" TO TEE-PIECE AFT OF FORMER 288", STBD, GROUP (Mod. 1696)				1	L56		QB2/94
	4S2889	PIPE, PRESSURE, $\frac{5}{16}$ " o/d \times 22G, TEE-PIECE AFT OF FORMER 288" TO TEE-PIECE FWD. OF FORMER 260", STBD, GROUP (Mod. 1696)				1	L56		QB2/95
	5S2889	PIPE, STATIC, $\frac{3}{16}$ " o/d \times 22G, TEE-PIECE AFT OF FORMER 288" TO TEE-PIECE FWD. OF FORMER 260", STBD., GROUP (Mod. 1696)				1	L56		QB2/96
	6S2889	PIPE, PRESSURE, $\frac{3}{16}$ " o/d \times 22G, TEE-PIECE FWD. OF FORMER 260" TO UNION FWD. OF FORMER 232", STBD., GROUP (Mod. 1696)				1	L56		QB2/97
	7S2889	PIPE, STATIC, $\frac{3}{16}$ " o/d \times 22G, TEE-PIECE FWD. OF FORMER 260" TO UNION FWD. OF FORMER 232", STBD., GROUP (Mod. 1696)				1	L56		QB2/98
	120S1980	PIPE, STATIC, $\frac{5}{16}$ " o/d \times 22G \times 31", UNION FWD. OF FORMER 232" TO CROSS-PIECE AFT OF FORMER 218", STBD., GROUP				1	L56		QB2/99
	121S1980	PIPE, PRESSURE, $\frac{5}{16}$ " o/d \times 22G \times 28", UNION FWD. OF FORMER 232" TO CROSS-PIECE AFT OF FORMER 218", STBD., GROUP				1	L56		QB2/100

SERVICES
AIR SPEED INDICATOR

Ref. No.	Part No.	Description	No. off	Matl. Spec.	Cl. of St.	Plate and Illust'n No.
					M.R.	
		1 2 3 4				
		AIR SPEED INDICATOR SYSTEM (S2167, S2165, Q2211 & Q2212) (Cont'd)				
	6S1980	PIPE, STATIC, $\frac{1}{2}$ " o/d \times 22G \times 9", CROSS-PIECE TO ADAPTOR AT FORMER 204", STBD., GROUP	1	L56		QB2/101
	10SS1980	PIPE, PRESSURE, $\frac{3}{8}$ " o/d \times 22G \times 9", CROSS-PIECE TO ADAPTOR AT FORMER 204", STBD., GROUP	1	L56		QB2/102
	13S1980	PIPE, STSTIC, $\frac{3}{8}$ " o/d \times 22G \times 121", ADAPTOR AT FORMER 204" TO ADAPTOR BETWEEN FORMERS 115.5" AND 101", STBD., GROUP	1	L56		QB3/103
	7S1980	PIPE, PRESSURE, $\frac{3}{8}$ " o/d \times 22G \times 119" ADAPTOR AT FORMER 204" TO ADAPTOR BETWEEN FORMERS 115.5" AND 101", STBD., GROUP	1	L56		QB3/104
	57S2165	PIPE, PRESSURE, $\frac{1}{2}$ " o/d \times 22G \times 15", TEE-PIECE FWD. OF FORMER 358" TO TEE-PIECE FWD. OF FORMER 344", PORT, GROUP	1	L56		QB1/105
	116S2165	PIPE, PRESSURE, $\frac{3}{8}$ " o/d \times 22G, TEE-PIECE TO TEE-PIECE AT FWD. PRESSURE BULKHEAD, PORT, GROUP (Pre Mod. 1073)	1	L56		
	180S2165	PIPE, PRESSURE, $\frac{3}{8}$ " o/d \times 22G, TEE-PIECE TO TEE-PIECE, FRONT PRESSURE BULKHEAD, PORT, GROUP (Mod. 1073)	1	L56		QB1/106
	181S2165	PIPE, PRESSURE, $\frac{3}{8}$ " o/d \times 22G, TEE-PIECE TO TEE-PIECE, FRONT PRESSURE BULKHEAD, PORT, GROUP (Mod. 1073)	1	L56		QB1/107
	46S1980	Pipe, flexible, $\frac{1}{4}$ " i/d, forward of former 358", port (Pre Mod. 658)	1	—		
	102S2165	Pipe, flexible, $\frac{1}{4}$ " i/d \times 14", forward of former 358", port (Mod. 658)	1	—		QB1/108
11546	101S2165	PIPE, STUB, $\frac{3}{8}$ " o/d \times 22G \times 8", FWD. OF FORMER 358", PORT	1	L56	C	QB1/109
	12S2165	PIPE, PRESSURE, $\frac{3}{8}$ " o/d \times 22G \times 50", TEE-PIECE, FWD. OF FORMER 358" TO ADAPTOR AT FORMER 316", PORT, GROUP	1	L56		QB1/110
	13S2165	PIPE, STATIC, $\frac{3}{8}$ " o/d \times 22G \times 52", TEE-PIECE FWD. OF FORMER 358" TO ADAPTOR AT FORMER 316", PORT, GROUP	1	L56		QB1/111
	22S1980	PIPE, PRESSURE, $\frac{3}{8}$ " o/d \times 22G \times 2'-6" ADAPTOR AT FORMER 316" TO TEE-PIECE AFT OF FORMER 302", PORT, GROUP	1	L56		QB2/112

SERVICES
AIR SPEED INDICATOR

Ref. No.	Part No.	Description	No. off	Matl. Spec.	Cl. of St.	Plate and Illust'n No.
					M.R.	
		1 2 3 4				
9324	16S1980	AIR SPEED INDICATOR SYSTEM (S2167, S2165, Q2211 & Q2212) (Cont'd) PIPE, STATIC, 5/16" O/D x 22G x 13", ADAPTOR AT FORMER 316" TO TEE-PIECE AFT OF FORMER 302", PORT, GROUP	1	L56		QB2/113
	60S1980	PIPE, DRAIN, 5/16" O/D x 22G x 7", PORT, GROUP	2	L56		QB2/114
	152S1980	PIPE, STATIC, 5/16" O/D x 22G, TEE-PIECE AFT OF FORMER 316" TO TEE-PIECE AFT OF FORMER 232", PORT, GROUP	1	L56		QB2/115
	153S1980	PIPE, PRESSURE, 5/16" O/D x 22G x 83", TEE-PIECE AFT OF FORMER 316" TO TEE-PIECE AFT OF FORMER 232", PORT, GROUP	1	L56		QB2/116
	19S2165	PIPE, STATIC, 5/16" O/D x 22G x 5", TEE-PIECE AFT OF FORMER 232" TO TEE-PIECE FWD. OF FORMER 218", PORT, GROUP	1	L56		QB2/117
	26S2165	PIPE, PRESSURE, 5/16" O/D x 22G x 8", TEE-PIECE TO TEE-PIECE BETWEEN FORMER 232" AND 218", PORT, GROUP	1	L56		QB2/118
	22S2165	PIPE, PRESSURE, 5/16" O/D x 22G x 23", ... TEE-PIECE AFT OF FORMER 232" TO ADAPTOR AT REAR PRESSURE BULK-HEAD, PORT, GROUP	1	L56		QB2/119
	21S2165	PIPE, STATIC, 5/16" O/D x 22G x 52", TEE-PIECE AFT OF FORMER 232" TO ADAPTOR AT REAR PRESSURE BULK-HEAD, PORT, GROUP	1	L56		QB2/120
	115S1980	PIPE, STATIC, 5/16" O/D x 22G x 139", ADAPTOR AT REAR PRESSURE BULK-HEAD TO UNION FWD. OF FORMER 101", PORT, GROUP	1	L56	MR	QB3/121
	116S1980	PIPE, PRESSURE, 5/16" O/D x 22G x 137", ... ADAPTOR AT REAR PRESSURE BULK-HEAD TO UNION FWD. OF FORMER 101", PORT, GROUP	1	L56		QB3/122
1510445	60S1980	PIPE, DRAIN, 5/16" O/D x 22G x 7", AFT OF FORMER 288", STARBOARD, GROUP	2	L56		QB2/123
	DUNLOP 4/N/1014/DAS/ 6060/16	Pipe, flexible, at starboard monitor panel	1	-	C	
	DUNLOP 4/N/1014/DAS/ 6383	Pipe, flexible, at starboard monitor panel	2	-		QB2/124
	DUNLOP 4/N/1014/DAS/ 6060	Pipe, flexible, at starboard monitor panel	1	-		
	60S1980	PIPE, DRAIN, 5/16" O/D x 22G x 7", AFT OF FORMER 218", STARBOARD GROUP	2	L56		QB2/125

SERVICES
AIR SPEED INDICATOR

Ref. No.	Part No.	Description	No. off	Matl. Spec.	Cl. of St.	Plate and Illust'n No.
					M.R.	
		1 2 3 4				
		AIR SPEED INDICATOR SYSTEM (S2167, S2165, Q2211 & Q2212) (Cont'd)				
	46S1980	Pipe, flexible, at former 218, starboard (Pre-Mod. 658)	2	—		
	107S2165	Pipe, flexible, 1/4" i/d x 24" long, at former 218", starboard (Mod. 658)	2	—		QB2/126
	128S1980	PIPE, STATIC, 5/16" o/d x 22G x 52", TEE-PIECE AFT OF FORMER 218" TO FLEXIBLE PIPE AT NAVIGATOR'S PANEL, GROUP	1	L56	MR	QB2/127
	127S1980	PIPE, PRESSURE, 5/16" o/d x 22G x 54", TEE-PIECE AFT OF FORMER 218" TO FLEXIBLE PIPE AT NAVIGATOR'S PANEL, GROUP	1	L56	MR	QB2/128
	126S1980	PIPE, STATIC, 5/16" o/d x 22G x 60", TEE-PIECE TO CROSS-PIECE AFT OF FORMER 218", STARBOARD, GROUP	1	L56		QB2/129
	125S1980	PIPE, PRESSURE, 5/16" o/d x 22G x 61", TEE-PIECE TO CROSS-PIECE AFT OF FORMER 218", STARBOARD, GROUP	1	L56		QB2/130
	67S2165	PIPE, STATIC, 5/16" o/d x 22G x 75", UNION TO TEE-PIECE AFT OF FORMER 218", PORT, GROUP	1	L56		QB2/131
	66S2165	PIPE, PRESSURE, 5/16" x o/d x 22G x 75", UNION TO TEE-PIECE AFT OF FORMER 218", PORT, GROUP	1	L56		QB2/132
	168S2165	PIPE, PRESSURE, 5/16" o/d x 22G x 34", TEE-PIECE AFT OF FORMER 232" TO MACH UNIT, PORT, GROUP (Mod. 1050)	1	L56		QB2/133
	15S2165	PIPE, STATIC, 5/16" o/d x 22G x 64", TEE-PIECE TO UNION AT FORMER 246", PORT, GROUP	1	L65		QB2/134
	28S2165	PIPE, STATIC, 5/16" o/d x 22G x 43", TEE-PIECE, AFT OF FORMER 232" TO MACH UNIT, PORT, GROUP	1	L56		QB2/135
	27S2165	PIPE, PRESSURE, 5/16" o/d x 22G x 56", TEE-PIECE TO UNION AFT OF FORMER 246", PORT, GROUP	1	L56		QB2/136
	63S2165	PIPE, PRESSURE, 5/16" o/d x 22G x 50", UNION AFT OF FORMER 246" TO MONITOR PANEL, GROUP	1	L56		QB2/137
	165S2165	PIPE, STATIC, 5/16" o/d x 22G x 50", UNION AT FORMER 246" TO MONITOR PANEL, GROUP (Mod. 1050)	1	L56		QB2/138
	60S1980	PIPE, DRAIN, 5/16" o/d x 22G x 7", AT MONITOR PANEL, GROUP	1	L56		QB2/139

SERVICES
AIR SPEED INDICATOR

Ref. No.	Part No.	Description	No. off	Mati. Spec.	Cl. of	Plate and Illust'n No.
					St. M.R.	
		1 2 3 4				
		AIR SPEED INDICATOR SYSTEM (S2167, S2165, Q2211 & Q2212) (Cont'd)				
10793	153S2165	PIPE, DRAIN, 3/8" o/d x 20G, AT MONITOR PANEL, GROUP	1	L56	C	QB2/140
	47S2165	PIPE, PRESSURE, 5/16" o/d x 22G x 30", .. UNION TO MACH UNIT, GROUP	1	L56		QB2/141
	166S2165	PIPE, STUB, 3/8" o/d x 22G, AT MONITOR PANEL, GROUP (Mod. 1050)	2	L65		QB2/142
10793	153S2165	PIPE, DRAIN, 3/8" o/d x 20G, AT MONITOR PANEL, GROUP (Mod. 1050)	2	L56	C	QB2/143
	60S1980	PIPE, DRAIN, 5/16" o/d x 22G x 7", AT FORMER 218", GROUP	2	L56		QB2/144
	8S2889	PIPE, PRESSURE, 5/16" o/d x 22G MONITOR TO TEE-PIECE FWD. OF FORMER 260" STARBOARD, GROUP (Mod. 1696)	1	L56		QB2/145
	9S2889	PIPE, STATIC, 5/16" o/d x 22G, MONITOR . TO TEE-PIECE FWD. OF FORMER 260", STARBOARD, GROUP (Mod. 1696)	1	L56		QB2/146
	158S1980	PIPE, STUB, 5/16" x 22G, MONITOR PANEL, GROUP	2	L56		QB2/147
	166S2165	PIPE, STUB, 3/8" o/d x 22G, MONITOR PANEL, GROUP (Mod. 1051)	2	L56		QB2/148
10907	4SS4996	Pipe, flexible, at monitor panel (Mod. 1051) ..	2	—	C	QB2/149
	4SS5001	Pipe, flexible, at monitor panel (Mod. 1051) ..	2	—	MR	QB2/150
	152S1980	PIPE, static, 5/16" o/d x 22G x 89", TEE-PIECE AFT OF FORMER 316" TO TEE-PIECE AT FORMER 246", PORT, GROUP	1	L56		QB2/151
9324	153S1980	PIPE, PRESSURE, 5/16" o/d x 22G x 83", .. TEE-PIECE AFT OF FORMER 316" TO TEE-PIECE AT FORMER 246", PORT, GROUP	1	L56	C	
	19S2165	PIPE, STATIC, 5/16" o/d x 22G x 5", TEE-PIECE AFT OF FORMER 232" TO TEE-PIECE AT FORMER 246", PORT, GROUP	1	L56		QB2/152
	26S2165	PIPE, PRESSURE, 5/16" o/d x 22G x 6", ... TEE-PIECE AFT OF FORMER 232" TO TEE-PIECE AT FORMER 246", PORT, GROUP	1	L56		QB2/153
	22S2165	PIPE, PRESSURE, 5/16" o/d x 22G x 23", .. TEE-PIECE AFT OF FORMER 232" TO ADAPTOR AT REAR PRESSURE BULKHEAD, PORT, GROUP	1	L56		QB2/154

SERVICES
AIR SPEED INDICATOR

Ref. No.	Part No.	Description	No. off	Matl. Spec.	Cl. of	Plate and Illust'n No.
					St. M.R.	
		1 2 3 4				
		AIR SPEED INDICATOR SYSTEM (S2167, S2165, Q2211 & Q2212) (Cont'd)				
	21S2165	PIPE, STATIC, 5/16" o/d x 22G x 52", COUPLING, REAR PRESSURE BULKHEAD, TO TEE-PIECE AFT OF FORMER 232", PORT, GROUP	1	L56		QB2/155
	167S2165	PIPE, STATIC, 5/16" o/d x 22G x 32", UNIT TO UNION AFT OF FORMER 218", GROUP	1	L65		QB2/156
	53S2165	PIPE, STATIC, 5/16" o/d x 22G x 24", TEE-PIECE TO UNION AFT OF FORMER 358", STBD., GROUP	1	L56		QB1/157
	56S2165	PIPE, PRESSURE, 5/16" o/d x 22G x 26" . . TEE-PIECE TO UNION AFT OF FORMER 358" STBD., GROUP	1	L65		QB1/158
	220S1980	PIPE, STATIC, 5/16" o/d x 22G x - UNION AFT OF FORMER 358" TO 2nd PILOT'S PANEL, GROUP	1	L56		QB1/159
	219S1980	PIPE, PRESSURE, 5/16" o/d x 22G x 23", . . UNION AFT OF FORMER 358" TO 2nd PILOT'S PANEL, GROUP	1	L56		QB1/160
	91S2165	Pipe, flexible, 1/4" i/d, at 2nd pilot's panel . . (Pre Mod. 658)	1	DTD251		
	104S2165	Pipe, flexible, 1/4" i/d, at 2nd pilot's panel . . (Mod. 658)	1	-		QB1/161
	94S2165	Pipe, flexible, 1/4" i/d, at 2nd pilot's panel . . (Pre Mod. 658)	1	DTD251		
	106S2165	Pipe, flexible, 1/4" i/d, at 2nd pilot's panel . . (Mod. 658)	1	-		QB1/162
	92S2165	Pipe, flexible, 1/4" i/d, at 1st pilot's panel . . . (Pre Mod. 658)	1	DTD251		
	102S2165	Pipe, flexible, 1/4" i/d, at 1st pilot's panel . . . (Mod. 658)	1	-		QB1/163
	93S2165	Pipe, flexible, 1/4" i/d at 1st pilot's panel . . . (Pre-Mod. 658)	1	DTD251		
	105S2165	Pipe, flexible, 1/4" i/d, at 1st pilot's panel . . . (Mod. 658)	1	-		QB1/164
	171S2165	PIPE, STATIC, 5/16" o/d x 22G, AT 1st PILOT'S PANEL, GROUP	1	L56		QB1/165
	172S2165	PIPE, PRESSURE, 5/16" o/d x 22G, AT 1st . . PILOT'S PANEL, GROUP	1	L56		QB1/166
	58S2165	PIPE, STATIC, 5/16" o/d x 22G x 20", TEE-PIECE TO UNION AFT OF FORMER 358", PORT, GROUP	1	L56		QB1/167
	57S2165	PIPE, PRESSURE, 5/16" o/d x 22G x 22", . . TEE-PIECE TO UNION AFT OF FORMER 358", PORT, GROUP	1	L56		QB1/168

SERVICES
AIR SPEED INDICATOR

Ref. No.	Part No.	Description	No. off	Matl. Spec.	Cl. of St.	Plate and Illust'n No.
					M.R.	
		1 2 3 4				
		AIR SPEED INDICATOR SYSTEM (S2167, S2165, Q2211 & Q2212) (Cont'd)				
	196S2165	PIPE, STATIC, 3/8" o/d x 22G x 7.5", AT 1st PILOT'S PANEL GROUP (Pre-Mod. 2263)	1	L56		QB1/169
	197S2165	PIPE, PRESSURE, 3/8" o/d x 22G x 7.5", AT 1st PILOT'S PANEL, GROUP (Pre-Mod. 2263)	1	L56		QB1/170
	169S2165	PIPE, STATIC, 5/16" o/d x 22G, AT 1st PILOT'S PANEL, GROUP (Mod. 980)	1	L56		QB1/171
	170S2165	PIPE, PRESSURE, 5/16" o/d x 22G, AT 1st PILOT'S PANEL, GROUP (Mod. 980)	1	L56		QB1/172
	178S2165	PIPE, STATIC, 3/8" o/d x 22G, CROSS- PIECE AFT OF FORMER 358" TO FLEXIBLE PIPE AT AUTO PILOT PRESSURE UNIT, GROUP	1	L65		QB1/173
	109S2165	PIPE, PRESSURE, 5/16" o/d x 22G, TEE- PIECE FWD OF FORMER 358" TO FLEXIBLE PIPE AT AUTO PILOT PRESSURE UNIT, GROUP	1	L65		QB1/174
	74S2165	PIPE, PRESSURE, 5/16" o/d x 22G x 46", AFT OF FORMER 316" TO UNION AFT OF FORMER 330", GROUP	1	L56		QB1/175
	96S2165	PIPE, STATIC, 5/16" o/d x 22G x 43", AFT OF FORMER 316" TO UNION AFT OF FORMER 330", GROUP	1	L56		QB1/176
	113S2165	PIPE, STATIC, 5/16" o/d x 22G, UNION AFT OF FORMER 330" TO TEE-PIECE, GROUP	1	L56		QB1/177
	112S2165	PIPE, STATIC, 5/16" o/d x 22G, TEE- PIECE TO TEE PIECE AFT OF FORMER 330", GROUP	1	L56		QB1/178
	69S2165	PIPE, STATIC, 5/16" o/d x 22G x 43", TEE-PIECE TO FLEXIBLE PIPE AT H.B.S. CALCULATOR, STARBOARD, GROUP	1	L56	MR	QB1/179
	97S2165	PIPE, PRESSURE, 5/16" o/d x 22G x 70", UNION AFT OF FORMER 330" TO UNION FORWARD OF FORMER 330", GROUP	1	L56		QB1/180
	99S2165	PIPE, PRESSURE, 5/16" o/d x 22G x 41", UNION FORWARD OF FORMER 330" TO TEE-PIECE AFT OF FORMER 344" STARBOARD, GROUP	1	L56		QB1/181
	108S1980	PIPE, STATIC, 5/16" o/d x 22G x 44", TEE-PIECE AFT OF FORMER 330" TO TEE-PIECE AFT OF FORMER 344" STARBOARD, GROUP	1	L56		QB1/182

SERVICES

AIR SPEED INDICATOR

Ref. No.	Part No.	Description	No. off	Matl. Spec.	Cl. of St.	Plate and Illust'n No.
					M.R.	
		1 2 3 4				
		AIR SPEED INDICATOR SYSTEM (S2167, S2165, Q2211 & Q2212) (Cont'd)				
	71 S2165	PIPE, STATIC, 5/16" o/d x 22G x 10",	1	L56		QB1/183
	73S2165	TEE-PIECE TO FLEXIBLE PIPE AT COMPUTER, PORT, GROUP				
	60S1980	PIPE, PRESSURE, 5/16" o/d x 22G x 7",	1	L56		QB1/184
	200S2165	TEE-PIECE TO FLEXIBLE PIPE AT COMPUTER, PORT, GROUP				
	102S2165	PIPE, DRAIN, 5/16" o/d x 22G x 7", AT	2	DTD323		QB1/185
	46S1980	COMPUTER, PORT, GROUP				
	4SS4996	PIPE, STATIC, 5/16" o/d x 22G,	1	L56	MR	QB1/186
	4SS5001	TEE-PIECE AT M.F.S. UNIT TO TEE-PIECE, PORT, GROUP				
	105S2167	Pipe, flexible, 14" long, at auto pilot	1	—		
	70S2165	pressure unit (Pre-Mod. 658)				
	103S2165	Pipe, flexible, 14" long, auto to pilot	1	DTD251		QB1/187
	179S2165	pressure unit (Pre-Mod. 658)				
	198S2165	Pipe, flexible, at auto pilot pressure unit ...	1	—	MR	QB1/188
	101S2165	(Mod. 658)				
11546	101S2165	Pipe, flexible, at auto pilot pressure unit ...	1	—		
	105S2167	(Mod. 658)				
	70S2165	PIPES, STUB, 5/16" o/d x 22G x 8", AT	1	L56	C	QB1/189
	103S2165	M.F.S. UNIT, PORT, GROUP				
	103S2165	Pipe, flexible, 1/4" i/d x 11.25" long at	1	—		QB1/190
	103S2165	M.F.S. unit				
	103S2165	Pipe, flexible, 1/4" i/d x 12" long at	1	DTD251		
	103S2165	calculator (Pre-Mod. 658)				
12739	179S2165	Pipe, flexible, 1/4" i/d x 12" long at	1	—		QB1/191
	179S2165	calculator (Mod. 658)				
	198S2165	PIPE, STUB, 5/16" o/d x 22G, AT AUTO	1	L56	C	QB1/192
	198S2165	PILOT PRESSURE UNIT, GROUP				
11546	101S265	PIPE, STUB, 5/16" o/d x 22G, AT AUTO	1	L56		QB1/193
	101S265	PILOT PRESSURE UNIT, GROUP				
11811	174S2165	PIPE, STUB, 5/16" o/d x 22G x 8", AT	1	L56	C	QB1/194
	174S2165	AUTO PILOT PRESSURE UNIT, GROUP				
	173S2165	PIPE, STUB, 3/8" o/d x 22G AT AUTO	1	L56	C	QB1/195
	173S2165	PILOT PRESSURE UNIT, GROUP				
	173S2165	(Mod. 1160)				
	173S2165	PIPE, DRAIN, 3/8" o/d x 22G AT AUTO	1	L54		
	173S2165	PILOT PRESSURE UNIT, GROUP				
	173S2165	(Pre-Mod. 1073)				
	183S2165	PIPE, DRAIN 3/8" o/d x 22G, AT AUTO	1	L54		QB1/196
	183S2165	PILOT PRESSURE UNIT, GROUP				
	183S2165	(Mod. 1073)				
	184S2165	PIPE, DRAIN, 5/16" o/d x 22G, AT AUTO ...	1	L54		QB1/197
	184S2165	PILOT PRESSURE UNIT, GROUP				
	63S1927	PIPE, PRESSURE, 5/16" o/d x 22G x 84", ..	1	L56		QB3/198
	63S1927	ADAPTOR TO TEE-PIECE, AIR INTAKE, PORT, GROUP				

SERVICES
AIR SPEED INDICATOR

Ref. No.	Part No.	Description	No. off	Matl. Spec.	Cl. of St.	Plate and Illust'n No.
					M.R.	
		1 2 3 4				
		AIR SPEED INDICATOR SYSTEM (S2167, S2165, Q2211 & Q2212) (Cont'd)				
	64S1927	PIPE, STATIC, 5/16" o/d x 22G x 84", ADAPTOR TO TEE-PIECE, AIR INTAKE, PORT, GROUP	1	L56		QB3/199
	60S1980	PIPE, DRAIN, 5/16" o/d x 22G x 4", AT TEE-PIECE, AIR INTAKE, PORT, GROUP	2	DTD323		QB3/200
	19S1927	PIPE, STATIC, 5/16" o/d x 22G x 120", TEE-PIECE TO UNION, FWD. OF FRONT SPAR, AIR INTAKE, PORT, GROUP (Pre-Mod. 514)	1	L56		
1433272	80S2165	PIPE, STATIC, 5/16" o/d x 22G x 126", TEE-PIECE TO UNION FWD. OF FRONT SPAR, AIR INTAKE, PORT, GROUP (Mod. 514)	1	L56	C	QB3/201
	18S1927	PIPE, PRESSURE, 5/16" o/d x 22G x 120", TEE-PIECE TO UNION FWD. OF FRONT SPAR, AIR INTAKE, PORT, GROUP (Pre-Mod. 514)	1	L56		
	79S2165	PIPE, PRESSURE, 5/16" o/d x 22G x 126", TEE-PIECE TO UNION FWD. OF FRONT SPAR, AIR INTAKE, PORT, GROUP (Mod. 514)	1	L56	MR	QB3/202
	121S2165	PIPE, STATIC, 5/16" o/d x 22G, UNION FWD. OF FRONT SPAR TO TEE-PIECE, AIR INTAKE, PORT, GROUP	1	L56		QB3/203
	122S2165	PIPE, PRESSURE, 5/16" o/d x 22G, UNION FWD. OF FRONT SPAR TO TEE-PIECE, AIR INTAKE, PORT, GROUP	1	L56		QB3/204
	151S2165	PIPE, STATIC, 3/8" o/d x 22G x 6", TRUE AIR SPEED UNIT TO TEE-PIECE, AIR INTAKE, STBD., GROUP (Mod. 863)	1	L56	MR	QB3/205
	149S2165	PIPE, PRESSURE, 5/16" o/d x 22G x 5", TRUE AIRSPEED UNIT TO TEE-PIECE, AIR INTAKE, STBD., GROUP (Mod. 863)	1	L56	MR	QB3/206
10792	152S2165	PIPE, STATIC, 3/8" o/d x 22G x 23", TEE-PIECE TO TEE-PIECE, AIR INTAKE, STBD., GROUP (Mod. 863)	1	L56	C	QB3/207
	147S2165	PIPE, PRESSURE, 5/16" o/d x 22G x 22", TEE-PIECE TO TEE-PIECE, AIR INTAKE, STBD., GROUP (Mod. 863)	1	L56	MR	QB3/208
10793	153S2165	PIPE, DRAIN, 5/16" o/d x 22G x 6", AT TEE-PIECE, AIR INTAKE, STBD., GROUP (Mod. 863)	1	L56	C	QB3/209
	62S1980	PIPE, STATIC, 5/16" o/d x 22G x 60", TEE-PIECE TO UNION, AIR INTAKE, STBD., GROUP	1	L56		GB3/210
	66S1980	PIPE, PRESSURE, 5/16" o/d x 22G x 60", TEE-PIECE TO UNION, AIR INTAKE, STBD., GROUP	1	L56		QB3/211
	61S1980	PIPE, STATIC, 5/16" o/d x 22G x 48", TEE-PIECE TO ADAPTOR, AIR INTAKE, STBD., GROUP	1	L56		QB3/212

SERVICES
AIR SPEED INDICATOR

Ref. No.	Part No.	Description	No. off	Matl. Spec.	Cl. of St.	Plate and Illust'n No.
					M.R.	
		1 2 3 4				
		AIR SPEED INDICATOR SYSTEM (S2167, S2165, Q2211 & Q2212) (Cont'd)				
	65S1980	PIPE, PRESSURE, 5/16" o/d x 22G x 48", ... TEE-PIECE TO ADAPTOR, AIR INTAKE, STARBOARD, GROUP	1	L56		QB3/213
	72S1980	PIPE, STATIC, 5/16" o/d x 22G x 132", UNION TO UNION, AIR INTAKE, STARBOARD, GROUP	1	L56		QB3/214
	71S1980	PIPE, PRESSURE, 5/16" o/d x 22G x 132", . UNION TO UNION, AIR INTAKE, STARBOARD, GROUP	1	L56		QB3/215
	71S1327	PIPE, STATIC, 5/16" o/d x 22G, UNION TO TEE-PIECE, AIR INTAKE, STARBOARD, GROUP	1	L56		QB3/216
	137S1980	PIPE, PRESSURE, 5/16" o/d x 22G, UNION TO TEE-PIECE, AIR INTAKE, STARBOARD, GROUP	1	L56		QB3/217
	161S2165	PIPE, STATIC, 5/16" o/d x 22G, PRESSURE SWITCHES TO TEE-PIECES AT RIB 63.5", STARBOARD, GROUP (Mod. 1078)	2	L56	MR	QB6/218
	159S2165	PIPE, PRESSURE, 5/16" o/d x 22G, LOWER PRESSURE SWITCH TO TEE-PIECE AT RIB 63.5, STARBOARD, GROUP (Mod. 1078)	1	L56	MR	QB6/219
	163S2165	PIPE, PRESSURE, 5/16" o/d x 22G, TEE-PIECE TO TEE-PIECE STARBOARD, GROUP	1	L56		QB6/220
	158S2165	PIPE, PRESSURE, 5/16" o/d x 22G, TEE-PIECE TO TEE-PIECE AT RIB 63.5", STARBOARD, GROUP (Mod. 1078)	1	L56	MR	QB6/221
	160S2165	PIPE, PRESSURE, 5/16" o/d x 22G, TEE-PIECE TO UPPER PRESSURE SWITCH AT RIB 63.5", STARBOARD, GROUP (Mod. 1078)	1	L56	MR	QB6/222
20026	157S2165	PIPE, PRESSURE, 5/16" o/d x 22G, TEE-PIECE TO SHUTTLE VALVE, AT RIB 63.5, STARBOARD, GROUP (Mod. 1078)	1	L56	C	QB6/223
	156S2165	PIPE, STATIC, 5/16" o/d x 22G, TEE-PIECE TO TEE-PIECE AT RIB 63.5", STARBOARD, GROUP (Mod. 1078)	1	L56	MR	QB6/224
	162S2165	PIPE, STATIC, 5/16" o/d x 22G, TEE-PIECE AT RIB 63.5" TO TEE-PIECE, STARBOARD, GROUP (Mod. 1078)	1	L56	MR	QB6/225
	54S1927	PIPE, DRAIN, 5/16" o/d x 22G x 4", AT RIB 63.5", STARBOARD, GROUP	1	DTD323		QB6/226
	55S1927	PIPE, DRAIN, 5/16" o/d x 22G x 4", AT RIB 63.5", STARBOARD, GROUP	1	L56		QB6/227
6414	197S1980	PIPE, DRAIN, 5/16" o/d x 22G, FWD. OF ... BOMB ARCH 21.717", PORT, GROUP	2	DTD323A	C	QB4/228

SERVICES
AIR SPEED INDICATOR

Ref. No.	Part No.	Description	No. off	Mach. Spec.	Cl. of St.	Plate and Illust'n No.
					M.R.	
		1 2 3 4				
		AIR SPEED INDICATOR SYSTEM (S2157, S2165, Q2211 & Q2212) (Cont'd)				
	187S1980	PIPE, PRESSURE, 5/16" o/d x 22G TEE- . . . PIECE AFT OF FRONT SPAR TO UNION FWD. OF BOMB ARCH 44.592", PORT, GROUP	1	L56	MR	QB4/229
	188S1980	PIPE, STATIC, 5/16" o/d x 22G, TEE- PIECE AFT OF FRONT SPAR TO UNION AFT OF BOMB ARCH 44.592", PORT, GROUP	1	L56	MR	QB4/230
	189S1980	PIPE, PRESSURE, 5/16" o/d x 22G, UNION . FWD. OF BOMB ARCH 44.592" TO UNION FWD. OF BOMB ARCH 123.015", PORT, GROUP	1	L56	MR	QB4/231
	190S1980	PIPE, STATIC, 5/16" o/d x 22G, UNION AFT OF BOMB ARCH 44.592" TO UNION FWD. OF BOMB ARCH 123.015", PORT, GROUP	1	L56	MR	QB4/232
	191S1980	PIPE, PRESSURE, 5/16" o/d x 22G, UNION . FWD. OF BOMB ARCH 123.015" TO TEE-PIECE AFT OF BOMB ARCH 201.367, PORT, GROUP	1	L56	MR	QB4/233
	192S1980	PIPE, STATIC, 5/16" o/d x 22G, UNION FWD. OF BOMB ARCH 123.015" TO TEE-PIECE AFT OF BOMB ARCH 201.367, PORT, GROUP	1	L56	MR	QB4/234
	104S1980	PIPE, DRAIN, 5/16" o/d x 22G x 6", AT TEE-PIECE AFT OF BOMB ARCH 201.367", PORT, GROUP	2	DTD323A	MR	QB4/235
	60S1980	PIPE, DRAIN, 5/16" o/d x 22G, AT TEE- . . . PIECES FWD. OF BOMB ARCH 225.227" AND BOMB ARCH 300", PORT, GROUP	4	DTD323A		QB4/236
	131S2165	PIPE, STATIC, 5/16" o/d x 22G, TEE- PIECE FWD. OF BOMB ARCH 225.227" TO TEE-PIECE FWD. OF BOMB ARCH 300", PORT, GROUP	1	L56		QB4/237
	132S2165	PIPE, PRESSURE, 5/16" o/d x 22G, TEE- . . . PIECE FWD. OF BOMB ARCH 225.227" TO TEE-PIECE FWD. OF BOMB ARCH 300", PORT, GROUP	1	L56		QB4/238
	130S2165	PIPE, STATIC, 5/16" o/d x 22G, TEE- PIECE TO ARTIFICIAL FEEL UNIT FWD. OF BOMB ARCH 300", PORT, GROUP	1	L56		QB4/239
	129S2165	PIPE, PRESSURE, 5/16" o/d x 22G, TEE- . . . PIECE TO ARTIFICIAL FEEL UNIT FWD. OF BOMB ARCH 300" PORT, GROUP	1	L56	MR	QB4/240
	46S1980	Pipe, flexible, 1/4" i/d, at artificial fuel units . (Pre Mod. 658)	6	--		
	106S2165	Pipe, flexible, .3" i/d, at artificial feel units . . . (Mod. 658)	6	--		QB4/241

SERVICES
AIR SPEED INDICATOR

Ref. No.	Part No.	Description	No. off	Matl. Spec.	Cl. of St.	Plate and Illust'n No.
					M.R.	
		1 2 3 4				
		AIR SPEED INDICATOR SYSTEM (S2167, S2165, Q2211 & Q2212) (Cont'd)				
	32S1980	PIPE, STATIC, 5/16" o/d x 22G, ARTIFICIAL FEEL UNIT TO TEE-PIECE, AFT OF BOMB ARCH 201.367", PORT, GROUP	1	L56		QB4/242
	33S1980	PIPE, PRESSURE, 5/16" o/d x 22G, ARTIFICIAL FEEL UNIT TO TEE-PIECE, AFT OF BOMB ARCH 201.367", PORT, GROUP	1	L56		QB4/243
	194S1980	PIPE, STATIC, 5/16" o/d x 22G, TEE- PIECE TO TEE-PIECE, AFT OF BOMB ARCH 201.367", PORT, GROUP	1	L56	MR	QB4/244
	193S1980	PIPE, PRESSURE, 5/16" o/d x 22G, TEE- ... PIECE TO TEE-PIECE, AFT OF BOMB ARCH 201.367", PORT, GROUP	1	L56	MR	QB4/245
	56S1980	PIPE, STATIC, 5/16" o/d x 22G, TEE- PIECE TO TEE-PIECE, AFT OF BOMB ARCH 201.367", PORT, GROUP	1	L56	MR	QB4/246
	54S1980	PIPE, STATIC, 5/16" o/d x 22G, TEE- PIECE TO TEE-PIECE, AFT OF BOMB ARCH 201.367", PORT, GROUP	1	L56		QB4/247
	53S1980	PIPE, PRESSURE, 5/16" o/d x 22G, TEE- ... PIECE TO TEE-PIECE, AFT OF BOMB ARCH 201.367", PORT, GROUP	1	L56		QB4/248
	55S1980	PIPE, PRESSURE, 5/16" o/d x 22G, TEE- ... PIECE TO TEE-PIECE, AFT OF BOMB ARCH 201.367", PORT, GROUP	1	L56	MR	QB4/249
	125S2165	PIPE, STATIC, 5/16" o/d x 22G, UNION TO TEE-PIECE, AFT OF BOMB ARCH 201.367", STARBOARD, GROUP	1	L56		QB4/250
	126S2165	PIPE, PRESSURE, 5/16" o/d x 22G, UNION . TO TEE-PIECE AFT OF BOMB ARCH 201.367", STARBOARD, GROUP	1	L56		QB4/251
	127S2165	PIPE, STATIC, 5/16" o/d x 22G, UNION TO JUNCTION BLOCK, STARBOARD, GROUP	1	L56		QB4/252

SERVICES
AIR SPEED INDICATOR

Ref. No.	Part No.	Description	No. off	Matl. Spec.	Cl. of	Plate and Illust'n No.
					St. M.R.	
		1 2 3 4				
		AIR SPEED INDICATOR SYSTEM (S2167, S2165, Q2211 & Q2212) (Cont'd)				
	223S1980	PIPE, PRESSURE, 5/16" o/d x 22G, UNION TO JUNCTION BLOCK, STARBOARD, GROUP	1	L56	MR	QB4/253
	110S2165	PIPE, PRESSURE, 5/16" o/d x 22G, TEE- PIECE, AFT OF BOMB ARCH 201.307" TO TEE PIECE, AFT OF BOMB ARCH 259.092", STARBOARD, GROUP	1	L56		QB4/254
	124S2165	PIPE, STATIC, 5/16" o/d x 22G, TEE- PIECE, AFT OF BOMB ARCH 201.307" TO TEE PIECE, AFT OF BOMB ARCH 250.092", STARBOARD, GROUP (Pre-Mod. 748)	1	L56		
	145S2165	PIPE, STATIC, 5/16" o/d x 22G, TEE- PIECE, AFT OF BOMB ARCH 201.307" TO TEE PIECE, AFT OF BOMB ARCH 259.092", STARBOARD, GROUP (Mod. 748)	1	L56		QB4/255
	104S1980	PIPE, DRAIN, 5/16" o/d x 22G x 6", AT TEE PIECE, AFT OF BOMB ARCH 259.092", STARBOARD, GROUP	1	DTD323A	MR	QB4/256
	117S2165	PIPE, PRESSURE, 5/16" o/d x 22G, TEE- PIECE, AFT OF BOMB ARCH 259.092" TO ARTIFICIAL FEEL UNIT, STARBOARD, GROUP (Pre Mod. 748)	1	L56		
	143S2165	PIPE, PRESSURE, 5/16" o/d x 22G, TEE- PIECE, AFT OF BOMB ARCH 259.092" TO ARTIFICIAL FEEL UNIT, STARBOARD, GROUP (Mod. 748)	1	L56		QB4/257
	118S2165	PIPE, STATIC, 5/16" o/d x 22G, TEE- PIECE, AFT OF BOMB ARCH 259.092" TO ARTIFICIAL FEEL UNIT, STARBOARD, GROUP (Pre-Mod. 748)	1	L56		
	144S2165	PIPE, STATIC, 5/16" o/d x 22G, TEE- PIECE, AFT OF BOMB ARCH 259.092" TO ARTIFICIAL FEEL UNIT, STARBOARD, GROUP (Mod. 748)	1	L56		QB4/258

SERVICES
AIR SPEED INDICATOR

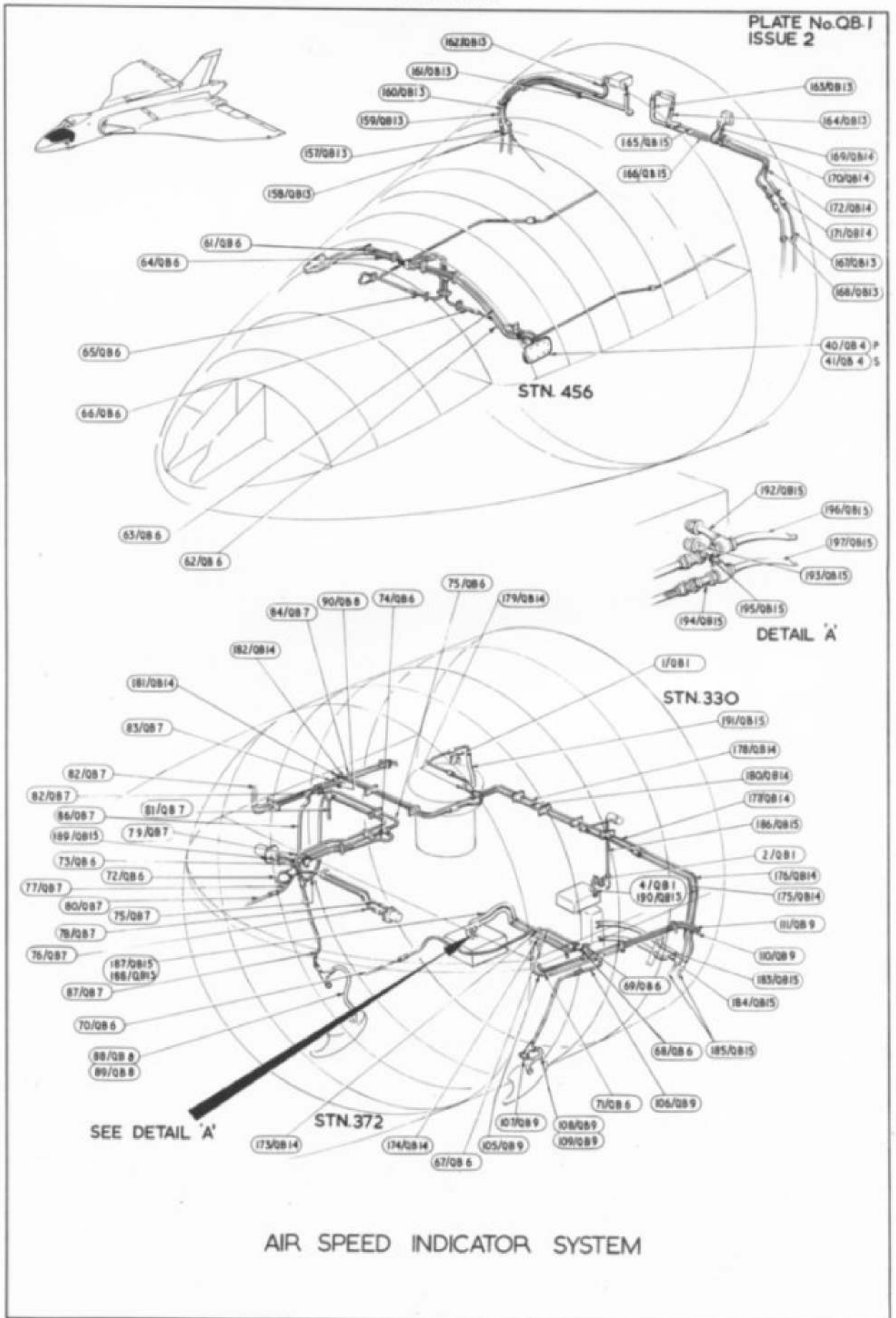
Ref. No.	Part No.	Description	No. off	Matl. Spec.	Cl. of St.	Plate and Illust'n No.
					M.R.	
		1 2 3 4				
		AIR SPEED INDICATOR SYSTEM (S2167, S2165, Q2211 & Q2212) (Cont'd)				
	128S2165	PIPE, STATIC, 5/16" o/d x 22G, TEE- PIECE AFT OF BOMB ARCH 201.307" TO UNION AFT OF BOMB ARCH 151.919", STARBOARD, GROUP	1	L56		QB4/259
	120S2165	PIPE, PRESSURE, 5/16" o/d x 22G, TEE- . . . PIECE, AFT OF BOMB ARCH 201.307" TO UNION AFT OF BOMB ARCH 151.919", STARBOARD, GROUP	1	L56		QB4/260
	238S1980	PIPE, STATIC, 5/16" o/d x 22G, UNION AFT OF BOMB ARCH 151.919" TO TEE-PIECE AFT OF BOMB ARCH 95.267", STARBOARD, GROUP	1	L56	MR	QB4/261
	242S1980	PIPE, PRESSURE, 5/16" o/d x 22G, UNION . AFT OF BOMB ARCH 151.919" TO TEE-PIECE AFT OF BOMB ARCH 95.967", STARBOARD, GROUP	1	L56	MR	QB4/262
	239S1980	PIPE, STATIC, 5/16" o/d x 22G, TEE- PIECE, AFT OF BOMB ARCH 95.967" TO TEE-PIECE AFT OF BOMB ARCH 44.592", STARBOARD, GROUP	1	L56		QB4/263
	243S1980	PIPE, PRESSURE, 5/16" o/d x 22G, TEE- . . . PIECE, AFT OF BOMB ARCH 95.967" TO TEE-PIECE AFT OF BOMB ARCH 44.592", STARBOARD, GROUP	1	L56		QB4/264
	45S2165	PIPE, STATIC, 5/16" o/d x 22G, TEE- PIECE, AFT OF BOMB ARCH 44.592" TO UNION AFT OF BOMB ARCH 21.717", STARBOARD, GROUP	1	L56		QB4/265
	87S1980	PIPE, PRESSURE, 5/16" o/d x 22G, TEE- . . . PIECE, AFT OF BOMB ARCH 44.592" TO UNION AFT OF BOMB ARCH 21.717", STARBOARD, GROUP	1	L56	MR	QB4/266

SERVICES
AIR SPEED INDICATOR

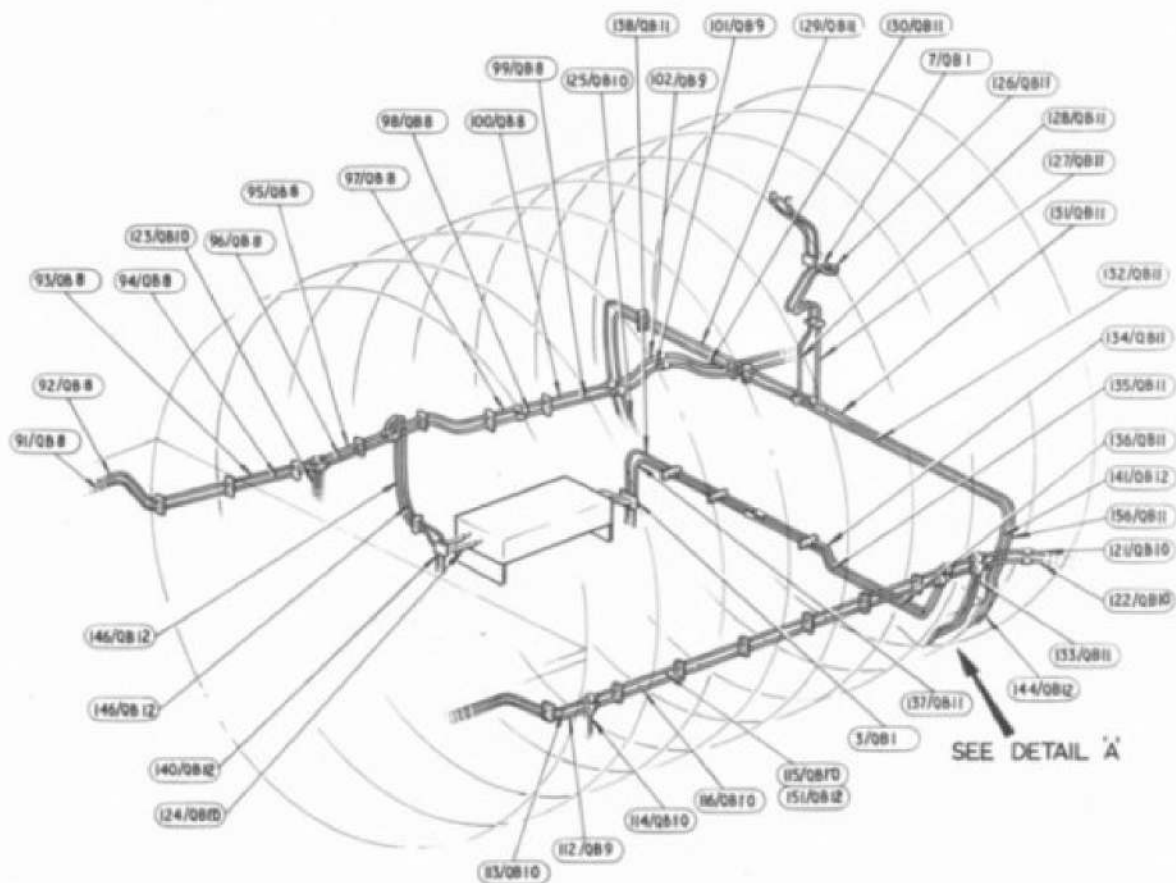
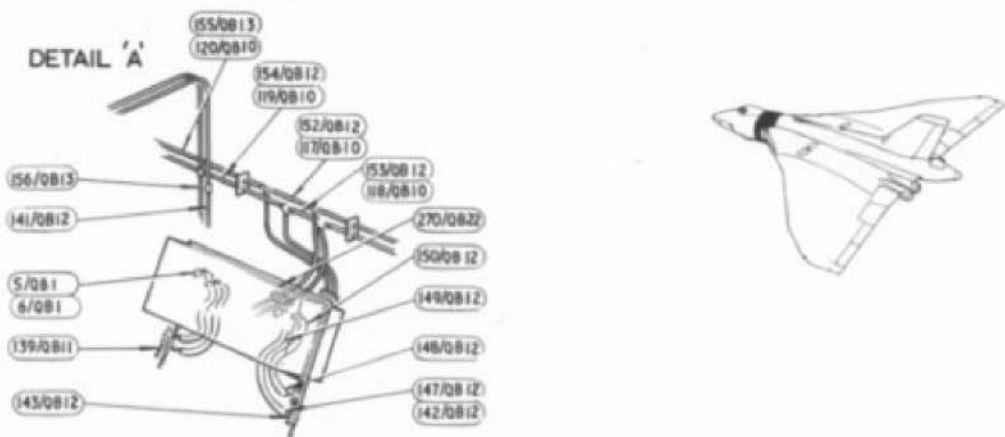
Ref. No.	Part No.	Description	No. off	Mach. Spec.	Cl. of St.	Plate and Illust'n No.
					M.R.	
		1 2 3 4				
		AIR SPEED INDICATOR SYSTEM (S2167, S2165, Q2211 & Q2212) (Cont'd)				
	155S2165	PIPE, STATIC, 5/16" o/d x 22G, UNION AFT OF BOMB ARCH 21.717 TO TEE- PIECE AT PRESSURE SWITCH, STARBOARD, GROUP	1	L56		QB4/267
	154S2165	PIPE, PRESSURE, 5/16" o/d x 22G, UNION AFT OF BOMB ARCH 21.717" TO TEE-PIECE AT PRESSURE SWITCH, STARBOARD, GROUP	1	L56		QB4/268
5CW/4405029	THERMAL CONTROLS TP5099	Switch, pressure, at bomb arch 21.717", starboard	1	-	A	QB6/269
	NEWMARK ND.1351	Unit, mach, aft of former 252", port	1	-		QB2/270
27VA/4625953	DUNLOP ACM18914	Valve, shuttle, ground test at bomb arch 21.717", starboard	1	-	A	QB6/271

RESTRICTED

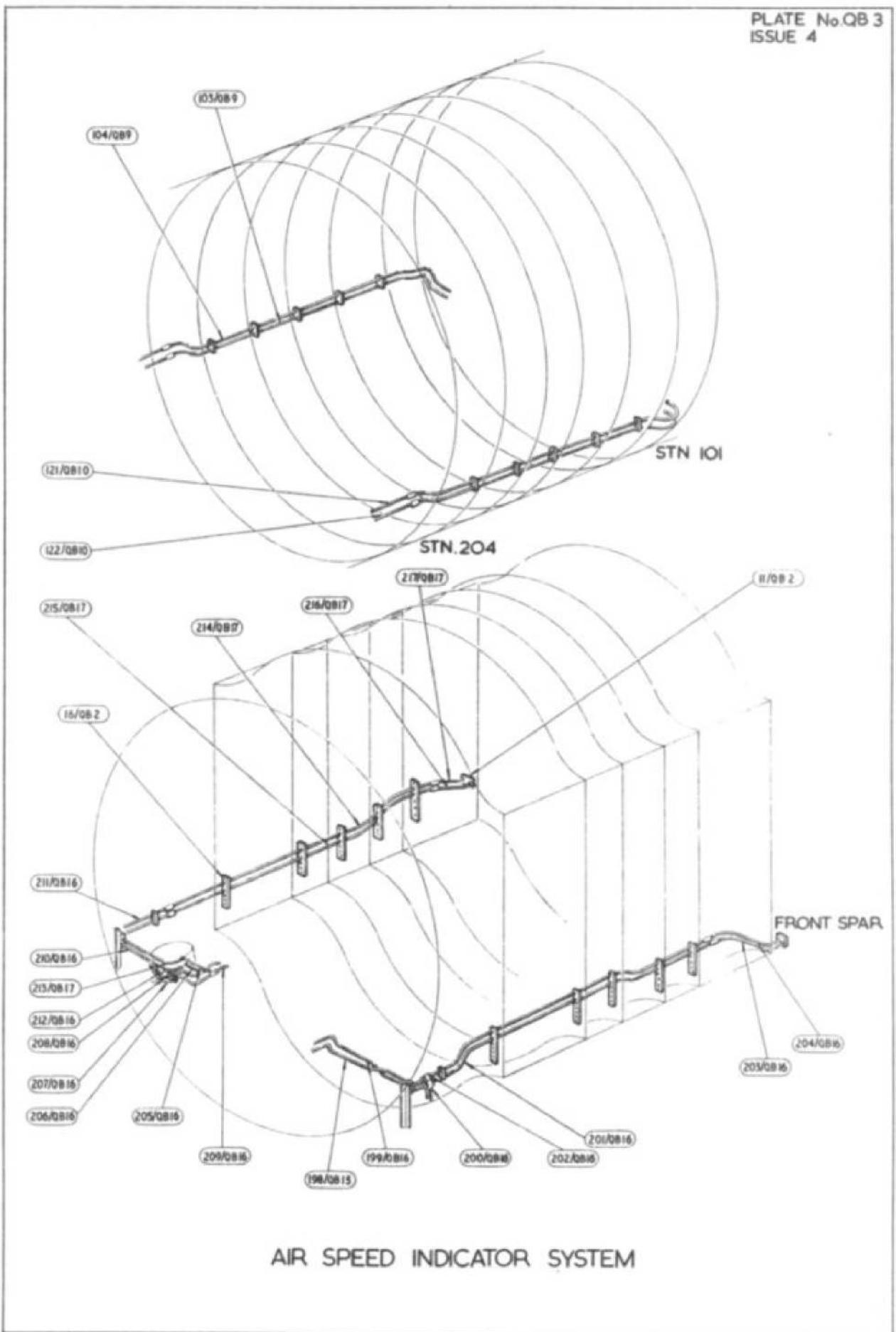
PLATE No.QB-1
ISSUE 2



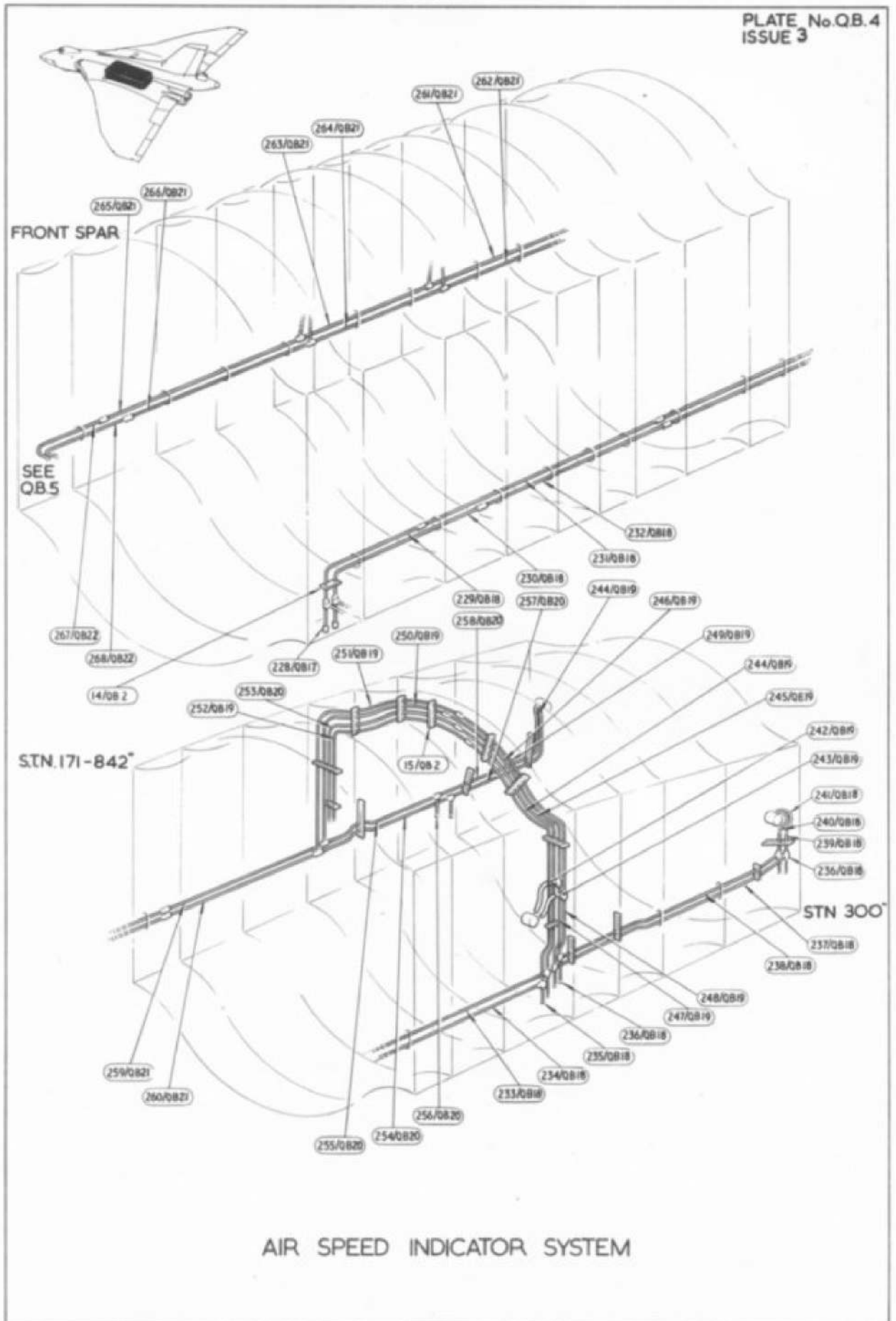
RESTRICTED

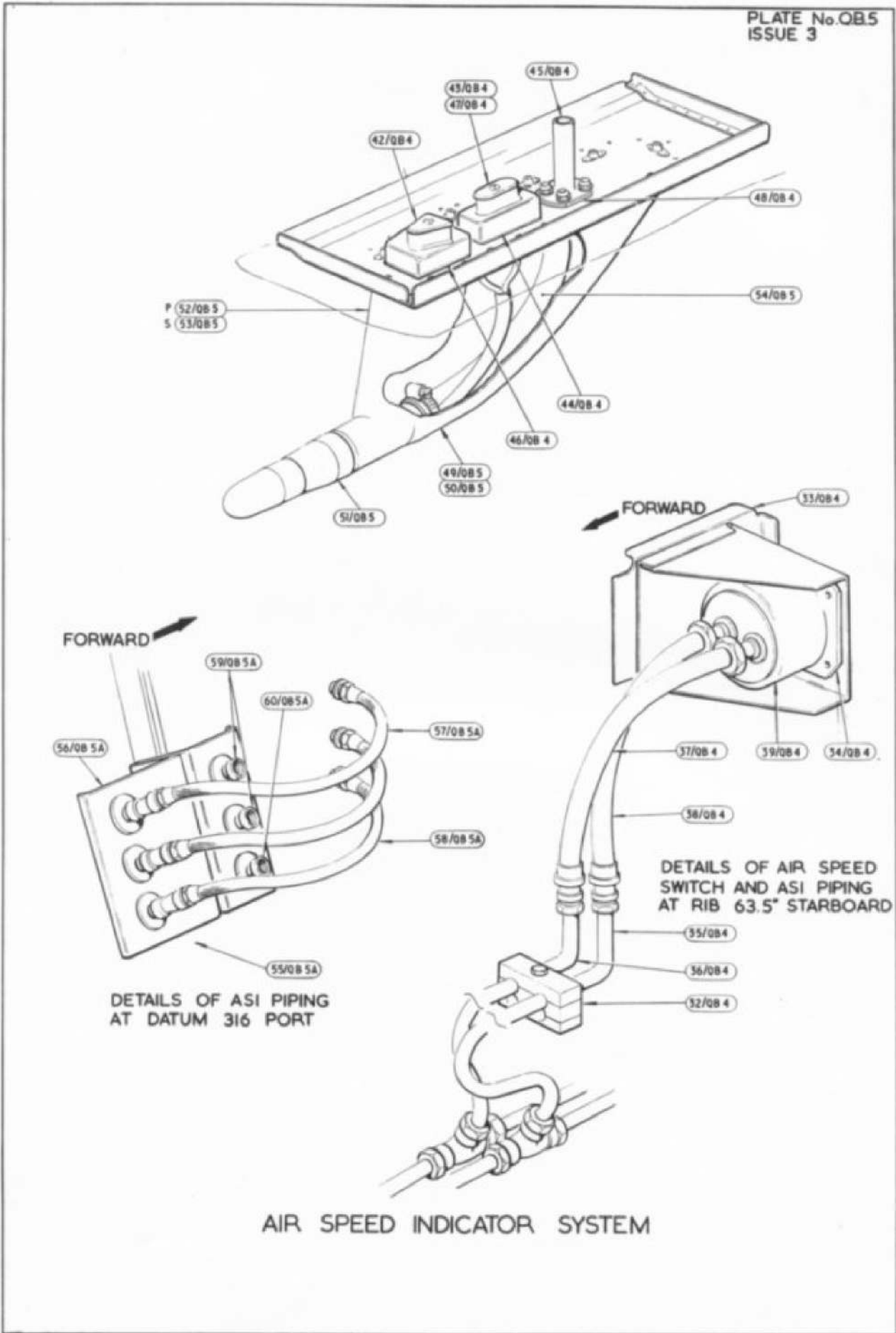


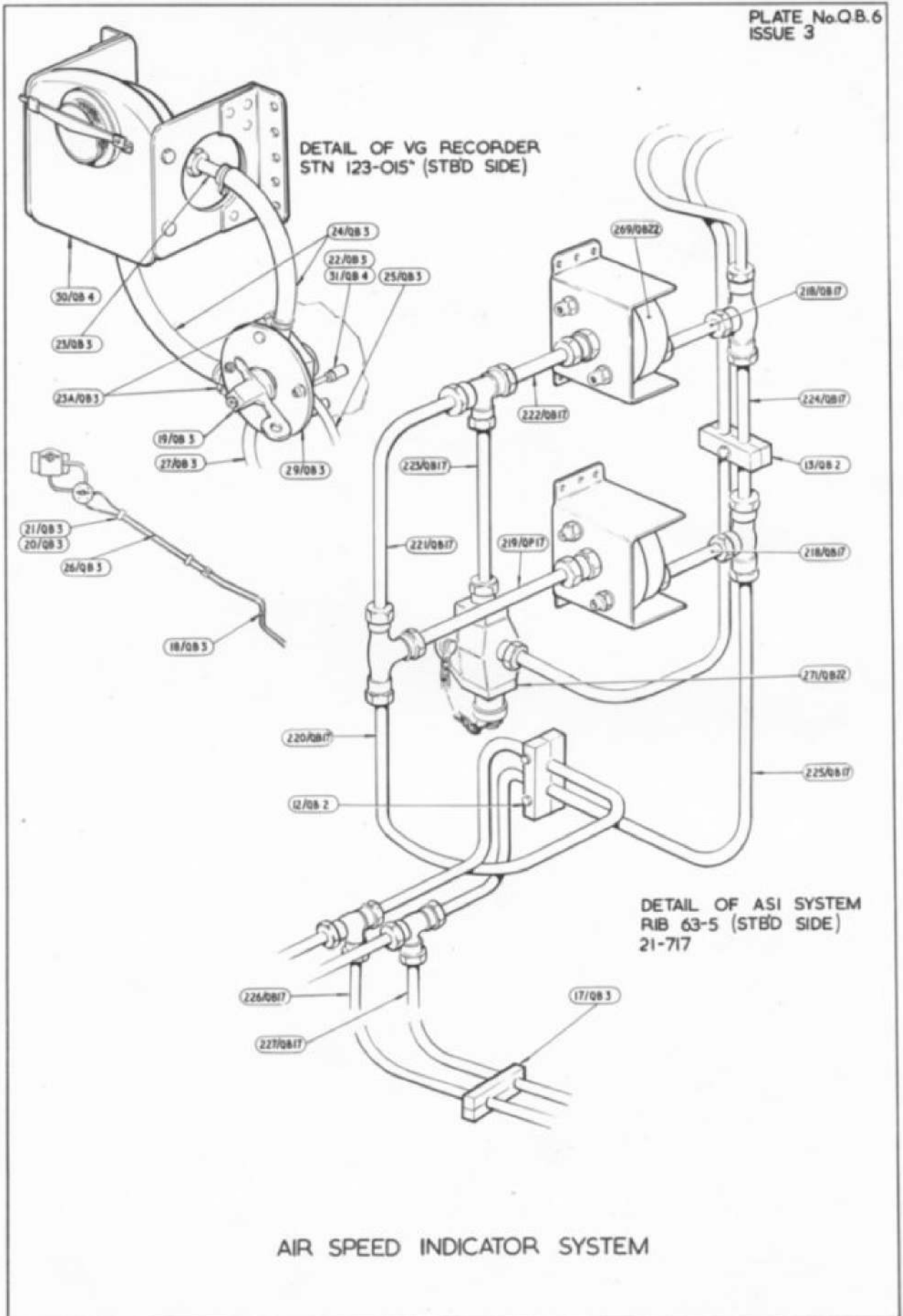
AIR SPEED INDICATOR SYSTEM




AIR SPEED INDICATOR SYSTEM









This file was downloaded
from the RTFM Library.

Link: www.scottbouch.com/rtfm

Please see site for usage terms,
and more aircraft documents.