

SERVICES

FIRE PROTECTION (METHYL BROMIDE)

Ref. No.	Part No.	Description	No. off	Matl. Spec.	Cl. of	Plate and Illust'n No.
					St.	
		1 2 3 4				
27N/100	—	FIRE PROTECTION (METHYL BROMIDE) Spares for :— AUXILIARY AIRBOURNE POWER PLANT Spares for :— Bottle, Methyl Bromide (Alternative 27N/100)	1	—	A	
27N/99	—	FIRE EXTINGUISHER SYSTEM, ENGINES, PORT AND STARBOARD (29-30Z9580) Spares for :— Bottle, fire extinguisher Mk. 13	2	—	A	QH1/1
13619	8SS1768 9SS2819	Clip, pipe	A/R	—	C	QH1/2
		Clip, pipe	A/R	—	C	QH1/3
		MOUNTING, FIRE EXTINGUISHER IN BOMB BAY, PORT AND STARBOARD (1Z7421) (Pre-Mod. 526) (2Z7421) (Mod. 526) Spares for :— DISH, MOUNTING, GROUP ...	2	—	MR	QH1/4
	1Z6930	Spares for :— Screw, 2 BA, for strap	2	—	MR	QH1/5
	5Z6930	STRAP, SECURING, GROUP ...	2	—	MR	QH1/6
	5Z6930					
1846	9Z7422	PIPE, MAIN FEED $\frac{3}{4}$ " o/d \times 22G \times 28", FROM EXTINGUISHER IN BOMB BAY, PORT, GROUP (Pre-Mod. 526)	1	L56	C	QH1/47
	10Z7422	PIPE, MAIN FEED, $\frac{3}{4}$ " o/d 22G \times 28", FROM EXTINGUISHER IN BOMB BAY, STARBOARD, GROUP (Pre-Mod. 526)	1	L56	MR	QH1/48
	12Z7422	PIPE, REAR MAIN FEED, $\frac{3}{4}$ " o/d \times 20G \times 32" FROM EXTINGUISHER IN BOMB BAY, STARBOARD, GROUP	1	L56	MR	QH1/49
	4Z9580	PIPE, FEED, $\frac{3}{4}$ " o/d \times 20G \times 16", BETWEEN TEE-PIECES IN LINE, FROM FORWARD, BOTTLE INBOARD BAY, PORT, GROUP	1	L56	MR	QH1/7
8585	5Z9580	PIPE, FEED, $\frac{3}{4}$ " o/d \times 20G \times 18", BETWEEN TEE-PIECES, OUTBOARD INBOARD BAY, GROUP	1	L56	C	QH1/8
8586	8Z9580	PIPE, FEED, $\frac{3}{4}$ " o/d \times 20G \times 12", OUTBOARD TEE-PIECE TO UNION INBOARD BAY, GROUP	1	L56	C	QH1/9
8587	9Z9580	PIPE, FEED, $\frac{3}{4}$ " o/d \times 20G \times 12", INBOARD, TEE-PIECE TO UNION, INBOARD BAY, GROUP	1	L56	C	QH1/10

SERVICES

FIRE PROTECTION (METHYL BROMIDE)

Ref. No.	Part No.	Description	No. off	Matl. Spec.	Cl. of St.	Plate and Illust'n No.
					M.R.	
		1 2 3 4				
		FIRE, EXTINGUISHER SYSTEM, ENGINES PORT AND STARBOARD (29-30Z9580) (Cont'd)				
22050	58Z9580	PIPE, FEED, $\frac{3}{8}$ " o/d \times 20G \times 12", OUTBOARD, TEE-PIECE TO UNION, INBOARD BAY, PORT, GROUP	1	L56	C	QH1/11
22049	55Z9580	PIPE, FEED, $\frac{3}{8}$ " o/d \times 20G \times 12", INBOARD, TEE-PIECE TO UNION, INBOARD BAY, PORT, GROUP	1	L56	C	QH1/12
9019	58Z9580	PIPE, SPRAY, $\frac{3}{8}$ " o/d \times 22G \times 108-0", UNION TO UNION, INBOARD AND OUTBOARD BAY, PORT, GROUP	2	T55	C	QH1/13
8589	11Z9580	PIPE, SPRAY, $\frac{3}{8}$ " o/d 22G \times 54", TEE-PIECE TO UNION, INBOARD, FORWARD, INBOARD BAY, PORT, GRP.	1	T55	C	QH1/14
8591	13Z9580	PIPE, SPRAY, $\frac{3}{8}$ " o/d \times 22G \times 54", BETWEEN UNIONS, OUTBOARD FORWARD, OUTBOARD AND INBOARD BAY, STARBOARD, GROUP	2	T55	C	QH1/15
8592	14Z9580	PIPE, SPRAY, $\frac{3}{8}$ " o/d \times 22G \times 24", TEE-PIECE TO UNION, OUTBOARD BAY, STARBOARD, GROUP	1	T55	C	QH1/16
12261	83Z9580	PIPE, SPRAY, $\frac{3}{8}$ " o/d \times 22G \times 59", TEE-PIECE TO UNION, INBOARD BAY, STARBOARD, GROUP (Mod. 1320)	1	T55	C	QH1/17
22051	60Z9580	PIPE, SPRAY, $\frac{3}{8}$ " o/d \times 22G \times 24", TEE-PIECE TO UNION, INBOARD BAY, PORT, GROUP	-	T55	C	QH1/18
8593	15Z9580	PIPE, SPRAY, $\frac{3}{8}$ " o/d \times 22G \times 42", FROM TEE-PIECE, INBOARD AND OUTBOARD BAYS, STARBOARD, GROUP	1	T55	C	QH1/19
8594	17Z9580	PIPE, FEED, $\frac{3}{8}$ " o/d \times 20G \times 42", FROM BOTTLE CONNECTION, PIPE TO OUTBOARD PIPES, INBOARD BAY	1	L56	C	QH1/20
8597	22Z9580	PIPE, SPRAY, $\frac{3}{8}$ " o/d \times 22G \times 108", CENTRE OUTBOARD COUPLING, LOWER TO REAR OUTBOARD AND INBOARD, STARBOARD, GROUP	2	T55	C	QH1/21
8601	34Z9580	PIPE, MAIN FEED, $\frac{3}{8}$ " o/d \times 20G \times 48", BETWEEN RIBS 63-5" AND 113-5", INBOARD BAY, PORT, GROUP	1	L56	C	QH1/22

SERVICES

FIRE PROTECTION (METHYL BROMIDE)

Ref. No.	Part No.	Description 1 2 3 4	No. off	Matl. Spec.	Cl. of St.	Plate and Illust'n No.
					M.R.	
		FIRE EXTINGUISHER SYSTEM, ENGINES, PORT AND STARBOARD (29-30Z9580) (Cont'd)				
8602	35Z9580	PIPE, MAIN FEED, $\frac{3}{4}$ " o/d \times 20G \times 48", BETWEEN RIBS 63-5" AND 113-5", INBOARD BAY, STARBOARD, GRP.	1	L56	C	QH1/23
8603	31Z9580	PIPE, FEED, $\frac{3}{4}$ " o/d \times 20G \times 60", BE- TWEEN TEE-PIECES, CENTRE TOP, INBOARD BAY, PORT, GROUP	1	L56	C	QH1/24
	80Z9580	PIPE, FEED, $\frac{3}{4}$ " o/d \times 20G \times 60", BE- TWEEN RIBS 113-5" AND 162-5", IN- BOARD BAY, PORT GROUP (Mod. 934)	1	L56	MR	QH1/25
8605	36Z9580	PIPE, FEED, $\frac{3}{8}$ " o/d \times 22G \times 74", TOP CENTRE TEE-PIECE TO BOTTOM INBOARD FORWARD TEE-PIECE, INBOARD BAY, PORT, GROUP	1	T58	C	QH1/26
8606	37Z9580	PIPE, FEED, $\frac{3}{8}$ " o/d \times 22G \times 50", TOP CENTRE TEE-PIECE TO BOTTOM INBOARD AFT TEE-PIECE, INBOARD BAY, PORT, GROUP	1	T58	C	QH1/27
22054	78Z9580	PIPE, SPRAY, $\frac{3}{8}$ " o/d \times 22G, FROM TEE-PIECE TO UNION, INBOARD BAY, PORT, GROUP	1	T55	C	QH1/28
8608	39Z9580	PIPE, SPRAY, $\frac{3}{8}$ " o/d \times 22G \times 14", FROM TEE-PIECE TO UNION, FORWARD INBOARD AND OUTBOARD, PORT, GROUP	2	T58	C	QH1/29
22056	81Z9580	PIPE, FEED, $\frac{3}{8}$ " o/d \times 22G \times 67", CENTRE OUTBOARD TEE-PIECE TO INBOARD FORWARD TEE-PIECE, OUTBOARD BAY, PORT, GROUP (Mod. 934)	1	T58	C	QH1/30
	82Z9580	PIPE, FEED, $\frac{3}{8}$ " o/d \times 22G \times 50", CENTRE, OUTBOARD TEE-PIECE TO INBOARD AFT TEE-PIECE, OUT- BOARD BAY, PORT, GROUP (Mod. 934)	1	T58	MR	QH1/31
8611	42Z9580	PIPE, SPRAY, $\frac{3}{8}$ " \times 22G \times 15", FOR- WARD FROM AFT INBOARD TEE- PIECE, OUTBOARD BAY, STAR- BOARD, GROUP	1	T58	C	QH1/32
8612	43Z9580	PIPE, SPRAY, $\frac{3}{8}$ " o/d \times 22G \times 14", AFT FROM INBOARD FORWARD TEE- PIECE, INBOARD AND OUTBOARD BAYS, STARBOARD, GROUP	2	T58	C	QH1/33

SERVICES

FIRE PROTECTION (METHYL BROMIDE)

Ref. No.	Part No.	Description 1 2 3 4	No. off	Matl. Spec.	Cl. of St.	Plate and Illust'n No.
					M.R.	
		FIRE EXTINGUISHER SYSTEM, ENGINES, PORT AND STARBOARD (29-30Z9580) (Cont'd)				
8613	44Z9580	PIPE, FEED, $\frac{3}{4}$ " o/d \times 22G \times 6', BETWEEN CENTRE OUTBOARD TEE-PIECES IN INBOARD AND OUTBOARD BAYS, STARBOARD, GROUP	2	T58	C	QH1/34
8614	45Z9580	PIPE, FEED, $\frac{3}{4}$ " o/d \times 22G \times 40", AFT INBOARD TO CENTRE OUTBOARD TEE-PIECES, OUTBOARD BAY, STAR- BOARD, GROUP	1	T58	C	QH1/35
8615	46Z9580	PIPE, FEED, $\frac{3}{4}$ " o/d \times 22G \times 65", FOR- WARD INBOARD TEE-PIECE TO CENTRE OUTBOARD TEE-PIECE, STARBOARD, GROUP	1	T58	C	QH1/36
8616	47Z9580	PIPE, FEED, $\frac{3}{4}$ " o/d \times 22G \times 41", TOP, CENTRE INBOARD TEE-PIECE TO BOTTOM AFT INBOARD TEE-PIECE, INBOARD BAY, STARBOARD, GRP.	1	T58	C	QH1/37
8617	48Z9580	PIPE, FEED, $\frac{3}{4}$ " o/d \times 22G \times 62", TOP CENTRE INBOARD TEE-PIECE TO BOTTOM FORWARD INBOARD TEE- PIECE, INBOARD BAY, STARBOARD, GROUP	1	T58	C	QH1/38
8620	51Z9580	PIPE, SPRAY, $\frac{3}{8}$ " o/d \times 22G \times 18", FOR- WARD FROM AFT INBOARD TEE- PIECE, OUTBOARD BAY, PORT, GRP.	1	T58	C	QH1/39
	56Z9580	PIPE, SPRAY, $\frac{3}{8}$ " o/d \times 22G \times 24", FROM TEE-PIECE TO UNION, AFT OUT- BOARD BAY, PORT, GROUP	1	T55		QH1/40
	57Z9580	PIPE, SPRAY, $\frac{3}{8}$ " o/d \times 22G \times 42", FROM TEE-PIECE TO UNION, FORWARD OUTBOARD BAY, PORT, GROUP	1	T35	MR	QH1/41
22059	59Z9580	PIPE, SPRAY, $\frac{3}{8}$ " o/d \times 22G \times 54", FROM TEE-PIECE TO UNION, FORWARD OUTBOARD BAY, PORT, GROUP	1	T55	C	QH1/42
	62Z9580	PIPE, SPRAY, $\frac{3}{8}$ " o/d \times 22G \times 42", FROM TEE-PIECE TO UNION, INBOARD BAY, PORT, GROUP	1	—	MR	QH1/43
	65Z9580	PIPE, FEED, $\frac{3}{4}$ " o/d \times 20G \times 40", FROM TEE-PIECE TO UNION, CENTRE IN- BOARD BAY, STARBOARD, GROUP	1	L56	MR	QH1/44
	66Z9580	PIPE, FEED, $\frac{3}{4}$ " o/d \times 20G \times 16", FROM TEE-PIECE TO UNION, CENTRE, FORWARD OUTBOARD BAY, STAR- BOARD, GROUP	1	L56	MR	QH1/45

SERVICES

FIRE PROTECTION (METHYL BROMIDE)

Ref. No.	Part No.	Description	No. off	Matl. Spec.	Cl. of St.	Plate and Illust'n No.
					M.R.	
		1 2 3 4				
		FIRE EXTINGUISHER SYSTEM, ENGINES, PORT AND STARBOARD (29-30Z9580) (Cont'd)				
	67Z9580	PIPE, FEED, $\frac{3}{8}$ " o/d \times 20G \times 12", FRONT, TEE-PIECE TO UNION, CENTRE AFT, OUTBOARD BAY, STARBOARD, GROUP	1	L56	MR	QH1/46
	70Z9580	PIPE, MAIN FORWARD FEED, $\frac{3}{8}$ " o/d \times 28G \times 28", INBOARD BAY, PORT, GROUP	1	L56		QH1/47
	71Z9580	PIPE, MAIN FORWARD FEED, $\frac{3}{8}$ " o/d \times 20G \times 28", INBOARD BAY, STARBOARD, GROUP	1	L56		QH1/48
	73Z9580	PIPE, MAIN REAR FEED, $\frac{3}{8}$ " o/d \times 20G \times 32", INBOARD BAY, PORT, GROUP	1	—		QH1/49
	72aZ9580	Seal, half	4	—	MR	QH1/50
	72cZ9580	Seal, half	4	—	MR	QH1/51
	127SS3557	Tee-piece, for pipes	4	S4	MR	QH1/52
	200SS3557	Tee-piece, for pipes	4	—		QH1/53
12K/1316	—	Unit, cartridge	2	—	B	QH1/54
	—	FIRE EXTINGUISHERS, MAIN PLANE LEADING EDGE, PORT AND STARBOARD (F9665) (See Mainplanes, Leading Edge)	Ref.	—		
		FIRE EXTINGUISHER SYSTEM IN No. 1 AND No. 2 FUEL TANK BAYS (1Z7624) Spares for :—				
27N/99	—	Bottle, fire extinguisher	4	—	A	QH2/55
12K/1316	—	Cartridge, fire extinguisher (Mod. 1346)	4	—	B	QH2/56
	DUNLOP DH/125A/23	Pipe, feed, flexible, 23" long	2	—		QH2/57
	5Z7624	PIPE, CENTRE SPRAY, $\frac{3}{8}$ " o/d \times 20G \times 10", No. 1 TANK BAY, GROUP	1	L54		QH2/58
	7Z7624	PIPE, CENTRE SPRAY, $\frac{3}{8}$ " o/d \times 20G \times 6", No. 2 TANK BAY, GROUP	1	L54		QH2/59
	8Z7624	PIPE, OUTBOARD SPRAY, $\frac{3}{8}$ " o/d \times 20G \times 7", No. 2 TANK, GROUP	1	L54		QH2/60
	13Z7624	PIPE, FEED, $\frac{3}{8}$ " o/d \times 20G \times 15", No. 2 TANK, GROUP	1	L54		QH2/61

SERVICES

FIRE PROTECTION (METHYL BROMIDE)

Ref. No.	Part No.	Description	No. off	Matl. Spec.	Cl. of	Plate and Illust'n No.
					St.	
		1 2 3 4			M.R.	
		FIRE EXTINGUISHER SYSTEM IN No. 1 AND No. 2 TANK BAYS (Z7624) (Cont'd)				
	16Z7624	PIPE, FEED, $\frac{3}{4}$ " o/d \times 20G \times 60", STARBOARD, GROUP	1	L56		QH2/62
	27Z7624	PIPE, FEED, $\frac{3}{4}$ " o/d \times 20G \times 108", STARBOARD, GROUP	1	L56		QH2/63
	19Z7624	PIPE, SPRAY, $\frac{3}{8}$ " o/d \times 20G \times 60", OUTBOARD AFT, No. 1 TANK, PORT, GRP.	1	L54		QH2/64
	21Z7624	PIPE, SPRAY, $\frac{3}{8}$ " o/d \times 20G \times 60", OUTBOARD AFT, No. 1 TANK, STARBOARD, GROUP	1	L54		QH2/65
	25Z7624	PIPE, SPRAY, $\frac{3}{4}$ " o/d \times 20G \times 66", OUTBOARD FORWARD, No. 1 TANK, PORT, GROUP	1	L54		QH2/66
	26Z7624	PIPE, SPRAY, $\frac{3}{4}$ " o/d \times 20G \times 66", OUTBOARD FORWARD, No. 1 TANK, STARBOARD, GROUP	1	L54		QH2/67
28Y/15486	18SS3557	Tee-piece	1	—	C	QH2/68
28F/9428453	A58/Mk. 2	Valve, charging	1	—	B	QH2/69
	AGS1186/B	Washer, sealing	1	—	C	
		FIRE EXTINGUISHER SYSTEM IN WING TANK BAYS, PORT AND ST'BD (1-2Z9144)				
		Spares for :—				
		BOTTLES, METHYL BROMIDE, ON TRANSPORT RIB, PORT AND STB'D (1-2Z9099)				
		Spares for :—				
27N/102	—	Bottle, methyl bromide	6	—	A	QH4/70
	50Z7857	Bracket	6	—		QH4/71
26FP/13942	15S3867	Bracket	1	—	C	QH4/72
26FP/1723	26SS3859	Clip	2	—	C	QH4/73
	22SS3859	Clip	4	—		QH4/74
26FP/3305	12SS3859	Clip	2	—	C	QH4/75
9193	4SS3859	Clip	1	—	C	QH4/76
26FP/10702	AWSSS4234	Clip, half	1	—	C	QH4/77
	1Z6930	DISH, MOUNTING, GROUP ...	6	—	MR	QH4/78
		Spares for :—				
	2Z6930	Dish, mounting	1	—		QH4/79
	4Z6930	Screw, 2 BA	2	—	MR	QH4/80
	5Z6930	STRAP, SECURING, GROUP ...	1	—	MR	QH4/81

SERVICES

FIRE PROTECTION (METHYL BROMIDE)

Ref. No.	Part No.	Description	No. off	Matl. Spec.	Cl. of	Plate and Illust'n No.
					St. M.R.	
		1 2 3 4				
		BOTTLES, METHYL BROMIDE ON TRANSPORT RIB, PORT AND STBD. (1-2Z9099) (Cont'd)				
28F/4051760	AGS1170/C	Nipple	3	—	C	QH4/82
	AGS1170/G	Nipple	2	—	—	QH4/83
28F/4051694	AGS1170/K	Nipple	1	—	C	QH4/84
	67SS3568	Olive, sleeved	3	—	MR	QH4/85
28F/8011897	AGS1142/F	Olive	12	—	C	QH4/86
	20Z9099	PIPE, FEED TO OUTBOARD TANK, PORT, GROUP (Mod. 894)				
1433240	21Z9099	PIPE, FEED TO OUTBOARD TANK, STARBOARD, GROUP (Mod. 894)	1	—	C	QH4/88
12802	22Z9099	PIPE, FEED TO INBOARD TANK, PORT, .. GROUP (Mod. 894)	1	—	C	QH4/89
12774	26Z9099	PIPE, FEED, TO INBOARD TANK, STARBOARD, GROUP (Mod. 894)	1	—	C	QH4/90
22218	5Z9144	PIPE, TEE-PIECE, PORT AND STARBOARD, GROUP (Mod. 894)	1	—	C	QH4/91
22217	7Z9144	PIPE, FEED, BETWEEN TEE-PIECE AND BRANCH PIPE, PORT AND STARBOARD, GROUP (Mod. 894)	1	—	C	QH4/92
22219	9Z9144	PIPE, FEED, BETWEEN JUNCTION TEE PIECE AND MAIN OUTBOARD FEED PIPE, PORT, GROUP (Mod. 894)	1	—	C	QH4/93
	10Z9144	PIPE, FEED, BETWEEN JUNCTION TEE-PIECE AND MAIN OUTBOARD FEED PIPE, STARBOARD, GROUP (Mod. 894)	1	—	MR	QH4/94
22215	17Z9144	PIPE, BRANCH, 3/8" o/d x 20G, PORT, .. GROUP (Mod. 894)	1	—	C	QH4/95
22216	18Z9144	PIPE, BRANCH, 3/8" o/d x 20G, STARBOARD, GROUP	1	—	C	QH4/96
	15Z9144	PIPE, BRANCH, 3/8" o/d x 20G, PORT, .. GROUP	1	—	—	QH4/97
	16Z9144	PIPE, BRANCH, 3/8" o/d x 20G, STARBOARD, GROUP	1	—	—	QH4/98
22221	29Z9099	PIPE, BRANCH, 3/8" o/d x 20G, PORT, .. GROUP	1	—	C	QH4/99
22222	30Z9099	PIPE, BRANCH, 3/8" o/d x 20G, STARBOARD, GROUP	—	—	C	QH4/100

SERVICES

FIRE PROTECTION (METHYL BROMIDE)

Ref. No.	Part No.	Description	No. off	Matl. Spec.	Cl. of St.	Plate and Illust'n No.
					M.R.	
		1 2 3 4				
		BOTTLES METHYL BROMIDE ON TRANSPORT RIB, PORT AND STARBOARD (1-2Z9099) (Cont'd.)				
12K/1317	—	Unit, 3 pin, cartridge (Mod. 1346)	6	—	B	QH2/101
12K/1316	—	Unit, 2 pin, cartridge (Mod. 1346)	6	—	B	QH2/102
26FP/13942	1SS3867	Bracket	90	—	C	QH3/103
26FP/13457	4SS3859	CLIP, 3/8" PIPE, GROUP	90	—	C	QH3/104
	18SS3859	CLIP, 1-1/4" PIPE, GROUP	21	—	MR	QH3/105
26FP/1723	26SS3859	CLIP, 1-3/4" PIPE, GROUP	3	—	C	QH3/106
	AW19SS4234	Clip, half	1	—		QH3/107
26FP/10702	AW5SS4234	Clip, half	5	—	C	QH3/108
	AW13SS4234	Clip, half	4	—		
4491	3Z8253	PIPE, FEED, 1-3/4" o/d x 20G x 44", ALONG OUTBOARD SIDE OF RIB, 618.186", PORT AND STARBOARD, GROUP	1	L56	C	QH3/110
4492	4Z8253	PIPE, FEED, 1-3/4" o/d x 20G x 66", ALONG OUTBOARD SIDE OF RIB 618.186" TO JOINT ALONG REAR SPAR, PORT, GROUP	1	L56	C	QH3/111
4493	5Z8253	PIPE, FEED, 1-3/4" o/d x 20G x 66", JOINT . OUTBOARD OF RIB 618.186" TO JOINT ALONG REAR SPAR, STARBOARD, GROUP	1	L56	C	QH3/112
4494	6Z8253	PIPE, FEED, 1-3/4" o/d x 20G x 102", ALONG FRONT SPAR, GROUP	1	L56	C	QH3/113
	11Z9144	PIPE, FEED, 7/8" o/d x 20G OUTBOARD, PORT, GROUP (Mod. 894)	1	L56		QH3/114
	12Z9144	PIPE, FEED, 7/8" o/d x 20G OUTBOARD, .. STARBOARD, GROUP (Mod. 894)	1	L56		QH3/115
	13Z9144	PIPE, FEED AND SPRAY CONNECTION, ... PORT, GROUP (Mod. 894)	1	L56		QH3/116
	14Z9144	PIPE, FEED AND SPRAY CONNECTION, ... STARBOARD, GROUP (Mod. 894)	1	L56		QH3/117
	14Z8253	PIPE, FEED AND SPRAY CONNECTION, ... ALONG INBOARD SIDE OF RIB 478.186	1	L54 or L59	MR	QH3/118

SERVICES

FIRE PROTECTION (METHYL BROMIDE)

Ref. No.	Part No.	Description	No. off	Mati. Spec.	Cl. of St.	Plate and Illust'n No.
					M.R.	
		1 2 3 4				
		FIRE EXTINGUISHER SYSTEM IN WING TANK BAYS, PORT AND STARBOARD (1-2Z9144)				
4503	15Z8253	PIPE, JUNCTION, ALONG INBOARD SIDE OF RIB 478-186", AFT, PORT, GROUP	1	L54 & L59	C	QH3/119
	16Z8253	PIPE, JUNCTION, ALONG INBOARD SIDE OF RIB 478-186", AFT, STARBOARD, GROUP	1	L54 & L59	MR	QH3/120
4505	17Z8253	PIPE, JUNCTION, FROM INBOARD SIDE OF RIB 478-186", CENTRE, PORT, GROUP	1	L45 & L59	C	QH3/121
4506	18Z8253	PIPE, JUNCTION, FROM INBOARD SIDE OF RIB 478-186" CENTRE, STARBOARD, GROUP	-	L54 & L59	C	QH3/122
4507	19Z8253	PIPE, FEED, ALONG RIB 478-186", AFT, GROUP	1	L56	C	QH3/123
4508	20Z5253	PIPE, FEED, BETWEEN JUNCTION PIPES ON INBOARD SIDE OF RIB 78-186", GROUP	1	L56	C	QH3/124
	21Z8253	PIPE, JUNCTION, FROM INBOARD SIDE OF RIB 478-186, FORWARD, PORT, GROUP	1	L54	MR	QH3/125
4510	22Z8253	PIPE, JUNCTION, FROM INBOARD SIDE OF RIB 478-186", FORWARD, STARBOARD, GROUP	1	L54	C	QH3/126
4511	23Z8253	PIPE, FEED, JUNCTION PIPE TO CONNECTION PIPE ON RIB 478-186", GROUP	1	L56	C	QH3/127
4512	24Z8253	PIPE, FEED, TO SPRAY CONNECTION ALONG INBOARD SIDE OF RIB 478-186", FORWARD, GROUP	1	L54 & L59	C	QH3/128
	25Z8253	PIPE, FEED AND SPRAY, FROM JUNCTION PIPE ON RIB 478-186", FORWARD, PORT, GROUP	1	L54 & L59	MR	QH3/129
22214	26Z8253	PIPE, FEED AND SPRAY, FROM JUNCTION PIPE ON RIB 478-186", FORWARD, STARBOARD, GROUP	1	L54 & L59	C	QH3/130
	27Z8253	PIPE, FEED AND SPRAY, FROM JUNCTION PIPE ON RIB 478-186", CENTRE, GROUP	1	L54 & L59	MR	QH3/131

SERVICES

FIRE PROTECTION (METHYL BROMIDE)

Ref. No.	Part No.	Description	No. off	Mati. Spec.	Cl. of St.	Plate and Illust'n No.
					M.R.	
		1 2 3 4				
		FIRE EXTINGUISHER SYSTEM IN WING TANK BAYS, PORT AND STARBOARD (1-2Z9144) (Cont'd)				
4515	29Z8253	PIPE, SPRAY, $\frac{3}{8}$ " o/d \times 20G \times 109", No. 7 TANK, BOTTOM, PORT, GROUP	1	L56	C	QH3/132
	30Z8253	PIPE, SPRAY, $\frac{3}{8}$ " o/d \times 20G \times 109", No. 7 TANK, BOTTOM, STBD., GROUP	1	L56	MR	QH3/133
4517	31Z8253	PIPE, SPRAY, $\frac{3}{8}$ " o/d \times 20G \times 120", No. 7 TANK, TOP, GROUP	1	L56	C	QH3/134
	32Z8253	PIPE, SPRAY, $\frac{3}{8}$ " o/d \times 20G \times 120", No. 6 TANK, TOP, GROUP	1	L56	MR	QH3/135
	33Z8253	PIPE, SPRAY, $\frac{3}{8}$ " o/d \times 20G \times 120", No. 5 TANK, BOTTOM, PORT, GROUP	1	L56	MR	QH3/136
	34Z8253	PIPE, SPRAY, $\frac{3}{8}$ " o/d \times 20G \times 120", No. 5 TANK, BOTTOM, STBD., GROUP	1	L56	MR	QH3/137
	35Z8253	PIPE, SPRAY, $\frac{3}{8}$ " o/d \times 20G \times 122", No. 5 TANK, TOP, PORT, GROUP	-	L56	MR	QH3/138
	36Z8253	PIPE, SPRAY, $\frac{3}{8}$ " o/d \times 20G \times 130", No. 5 TANK, TOP, STBD., GROUP	1	L56	MR	QH3/139
	37Z8253	PIPE, SPRAY, $\frac{3}{8}$ " o/d \times 20G \times 108", No. 6 TANK, BOTTOM, PORT, GROUP	1	L56	MR	QH3/140
4524	38Z8253	PIPE, SPRAY, $\frac{3}{8}$ " o/d \times 20G \times 108" No. 6 TANK, BOTTOM, STBD., GROUP	1	L56	C	QH3/141
	39Z8253	PIPE, SPRAY, $\frac{3}{8}$ " o/d \times 20G \times 118", No. 4 TANK BOTTOM, PORT, GROUP (Pre-Mod. 1106)	1	L56	C	
	21Z9144	PIPE, SPRAY, $\frac{3}{8}$ " o/d \times 20G \times 100", No. 4 TANK, BOTTOM, PORT, GROUP (Mod. 1106)	1	—		QH3/142
	19Z9166	PIPE, SPRAY, $\frac{3}{8}$ " o/d \times 20G \times 22", No. 4 TANK, BOTTOM, PORT, GROUP (Mod. 1106)	1	—		QH3/143
	40Z8253	PIPE, SPRAY, $\frac{3}{8}$ " o/d \times 20G \times 118", No. 4 TANK, BOTTOM, STBD., GROUP (Pre Mod. 1106)	1	L56	MR	
	22Z9144	PIPE, SPRAY, $\frac{3}{8}$ " o/d \times 20G \times 100", No. 4 TANK, BOTTOM, STBD., GROUP (Mod. 1106)	1	—		QH3/144

SERVICES

FIRE PROTECTION (METHYL BROMIDE)

Ref. No.	Part No.	Description	No. off	Matl. Spec.	Cl. of	Plate and Illust'n No.	
					St.		
		1 2 3 4			M.R.		
FIRE EXTINGUISHER SYSTEM IN WING TANK BAYS, PORT AND STARBOARD (1-2Z9144) (Cont'd)							
4527	20Z9144	PIPE, SPRAY, $\frac{3}{8}$ " o/d \times 20G \times 22", No. 4 TANK, BOTTOM, STARBOARD, GROUP (Mod. 1106)	1	—	MR	QH3/145	
	41Z8253	PIPE, SPRAY, $\frac{3}{8}$ " o/d \times 20G \times 126", No. 3 TANK, BOTTOM, PORT, GROUP	1	L56	C	QH3/146	
	42Z8253	PIPE, SPRAY, $\frac{3}{8}$ " o/d \times 20G \times 126", No. 3 TANK, BOTTOM, STBD., GROUP	1	L56	MR	QH3/147	
	43Z8253	PIPE, SPRAY, $\frac{3}{8}$ " o/d \times 20G \times 132", TANK, TOP, PORT, GROUP	1	L56	MR	QH3/148	
	44Z8253	PIPE, SPRAY, $\frac{3}{8}$ " o/d \times 20G \times 132", TANK, TOP, STARBOARD, GROUP	1	L56	MR	QH3/149	
	45Z8253	PIPE, SPRAY, $\frac{3}{8}$ " o/d \times 20G \times 126", No. 4 TANK, TOP, GROUP	1	L56	MR	QH3/150	
FIRE, EXTINGUISHER SYSTEM, BOMB BAY, PORT AND STARBOARD (1Z9790) (Mod. 526) (Mod. 527)							
27N/99	—	Spares for :— Bottle, fire extinguisher (Alternative 27N153)	4	—		QH6/151	
28D/9133014	A25/13C	Bolt	25	—	C	QH5/152	
28D/9436920	A25/1C	Bolt	A R	—	C	QH6/153	
28D/9133011	A25/2C	Bolt	6	—	C	QH6/154	
28D/9133012	A25/3C	Bolt	8	—	C	QH5/155	
28D/1200119	A25/4C	Bolt	2	—	C	QH5/156	
28D/7002428	A25/6C	Bolt	2	—	C	QH6/157	
28D/1010030	A25/7C	Bolt	1	—	C	QH5/158	
28D/9453970	A25/15C	Bolt	1	—	C	QH5/159	
28D/1011024	A25/21C	Bolt	2	—	C	QH5/160	
26FP/13421	14SS3859	Clip	14	—	C	QH5/161	
	18SS3859	Clip	2	—	MR	QH6/162	
26FP/1432567	AK5SS4234	Clip, half	1	—	C	QH5/163	
	AK15SS4234	Clip, half	1	—		QH5/164	
21864	10SS4386	Coupling		—	MR	QH6/165	
21865	52Z9790	Dish, mounting, rear	2	—	C	QH6/166	
	53Z9790	Dish, mounting, forward	2	—	C	QH6/167	
21866	56Z9790	MOUNTING, RAIL, ASSY., FWD., GROUP	2	—	C	QH6/168	
21867	57Z9790	MOUNTING, RAIL ASSY., REAR, GROUP	2	—	C	QH6/169	
		Spares for :—					
	6Z9790	Rail, mounting, forward	2	—		QH6/170	
	7Z9790	Rail, mounting, rear	2	—		QH6/171	
26DL/6010613	54Z9790	SPRING, STRAP, GROUP	4	—	C	QH6/172	

FIRE PROTECTION (METHYL BROMIDE)

Ref. No.	Part No.	Description	No. off	Matl. Spec.	Cl. of St.	Plate and Illust'n No.
					M.R.	
		1 2 3 4				
28M/1012015	AGS2001/C1/66	FIRE EXTINGUISHER SYSTEM BOMB BAY, PORT AND STARBOARD (1Z9790) (Mod. 526, Mod. 527) (Cont'd)				
21879	10SS4387	Nut, stiff	A/R	—	C	
	11SS4386	Olive, sleeved	1	—	MR	QH6/173
	11SS4387	Olive, sleeved	1	—	C	QH6/174
	83SS3568	Olive, sleeved	1	—		QH6/176
		Olive, sleeved	1	—		QH6/177
	64Z9790	Piece, distance	1	—		QH5/178
	65Z9790	Piece, distance	1	—		QH5/179
	68Z9790	Piece, distance	4	—		QH5/180
21853	11Z9790	PIPE, BETWEEN FRONT SPAR AND BOMB ARCH 44.592", 22G x 1" o/d x 4' 0" LONG, PORT, GROUP	1	—	C	QH5/181
21854	12Z9790	PIPE, BETWEEN FRONT SPAR AND BOMB ARCH 44.592", 22G x 1" o/d x 4' 0" LONG, STBD., GROUP	1	—	C	QH5/182
21855	13Z9790	PIPE, BETWEEN BOMB ARCHES 44.592" AND 108.687", 22G x 1.0" o/d x 5' 0" LONG, PORT, GROUP	1	—	C	QH5/183
21856	14Z9790	PIPE, BETWEEN BOMB ARCHES 44.592" AND 108.687", 22G x 1.0" o/d x 5' 0" LONG, STBD., GROUP	1	—	C	QH5/184
	27Z9790	PIPE, FROM EXTINGUISHER BOTTLE TO GALLERY PIPE, 22G x 3/4" o/d x 15" LONG, PORT, GROUP	1	—	MR	QH6/185
	49Z9790	PIPE, FROM EXTINGUISHER BOTTLE TO GALLERY PIPE, 22G x 3/4" o/d x 15" LONG, STBD., GROUP	2	—	MR	QH6/186
21870	76Z9790	PIPE, FROM EXTINGUISHER BOTTLE TO GALLERY PIPE, 22G x 3/4" o/d x 15" LONG, PORT, GROUP	1	—	C	QH6/187
21871	77Z9790	PIPE, FROM EXTINGUISHER BOTTLE TO GALLERY PIPE, 22G x 3/4" o/d x 15" LONG, STBD., GROUP	1	—	C	QH6/188
	48Z9790	PIPE, FROM EXTINGUISHER BOTTLE TO GALLERY PIPE, 22G x 3/4" o/d x 15" LONG, PORT, GROUP	2	—	MR	QH6/189
	26Z9790	PIPE, FROM EXTINGUISHER BOTTLE TO GALLERY PIPE, 22G x 3/4" o/d x 15" LONG, STBD., GROUP	1	—	MR	QH6/190

VULCAN No. 2

SERVICES
FIRE PROTECTION (METHYL BROMIDE)

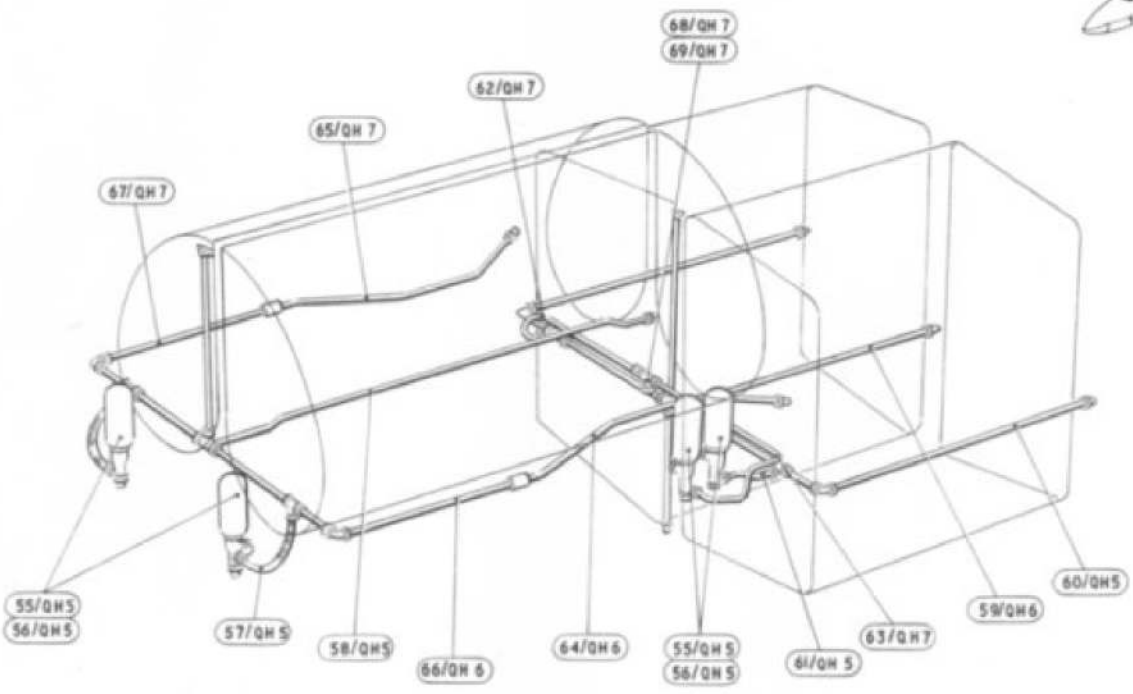
Ref. No.	Part No.	Description	No. off	Matl. Spec.	Cl. of St.	Plate and Illust'n No.
					M.R.	
		1 2 3 4				
		FIRE EXTINGUISHER SYSTEM BOMB BAY, PORT AND STBD. (1Z9790) (Mod. 526) (Mod. 527) (Cont'd)				
21862	73Z9790	PIPE, SPRAY, BETWEEN BOMB ARCHES 108-687" AND 151-919", 22G x 1-0" o/d x 4' 0" LONG, PORT, GROUP	1	—	C	QH5/191
21857	16Z9790	PIPE, SPRAY, BETWEEN BOMB ARCHES 108-687" AND 151-919", 22G x 1-0" o/d x 4' 0" LONG, STARBOARD, GROUP	1	—	C	QH5/192
21863	74Z9790	PIPE, SPRAY, BETWEEN BOMB ARCHES 151-919" AND 225-227", 22G x 1-0" o/d x 6' 25" LONG, PORT, GROUP	1	—	C	QH5/193
21858	18Z9790	PIPE, SPRAY, BETWEEN BOMB ARCHES 151-919" AND 225-227", 22G x 1-0" o/d x 6' 25" LONG, STBD., GROUP	1	—	C	QH5/194
21859	19Z9790	PIPE, SPRAY, BETWEEN BOMB ARCHES 225-227" AND 259-092", 22G x 1-0" o/d x 3' 6" LONG, PORT, GROUP	1	—	C	QH5/195
21860	20Z9790	PIPE, SPRAY, BETWEEN BOMB ARCHES 225-227" AND 259-092", 22G x 1-0" o/d x 3' 6" LONG, STBD., GROUP	1	—	C	QH5/196
	69Z9790	PIPE, SPRAY, BETWEEN BOMB ARCHES 259-092" AND 343-387", 22G x 1-0" o/d x 6' 6" LONG, PORT, GROUP (Pre-Mod. 2013)	1	—	MR	QH5/197
21861	51Z9790	PIPE, SPRAY, BETWEEN BOMB ARCHES 259-092" AND 343-387", 22G x 1-0" o/d x 6' 6" LONG, STBD., GROUP (Pre-Mod. 2013)	1	—	C	QH5/198
21868	23Z9790	PIPE, GALLERY, AT TEE-PIECE JUNCTION, 22G x 1½" o/d x 3' 0" LONG, PORT AND STARBOARD, GROUP	1	—	C	QH6/199
21869	24Z9790	PIPE, JOINT, TEE-PIECE TO GALLERY PIPE, 22G x 1½" o/d x 2' 0" LONG, PORT AND STARBOARD, GROUP	1	T58	C	QH6/200
28W/9419402	19SS3557 AS2811/5/118 SP13/C	Tee-piece	1	—		QH6/201
		Tube, distance	24	—		
		Washer	A/R	—	C	

VULCAN Mk. 2

SERVICES
 FIRE PROTECTION (METHYL BROMIDE)
 SUMMARY OF STANDARD ITEMS

Page QH. 15

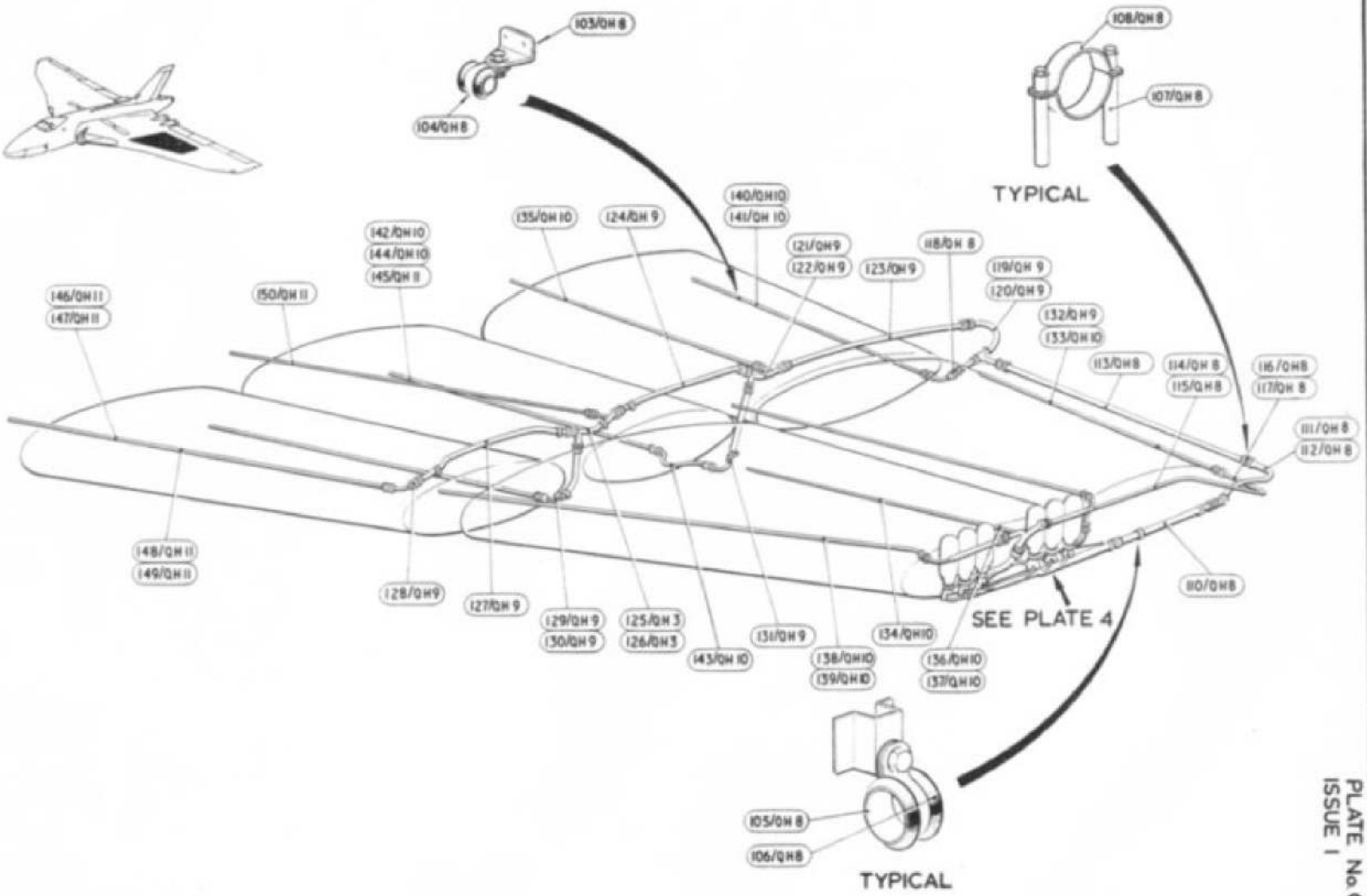
Stores Ref.		No. off	Stores Ref.		No. off	Stores Ref.		No. off
Section	Ref. No.		Section	Ref. No.		Section	Ref. No.	
28D	1010030	1						
28D	1011024	2						
28D	1200119	2						
28D	7002428	2						
28D	9133011	6						
28D	9133012	8						
28D	9133014	25						
28D	9436920	51						
28D	9453970	1						
28M	1278190	109						
28Y	15486	1						
28W	9419402	111						



FIRE EXTINGUISHER SYSTEM
No. 1 AND 2. FUEL TANK BAYS

RESTRICTED

RESTRICTED



FIRE EXTINGUISHER SYSTEM
WING TANK BAYS. PORT AND STBD.

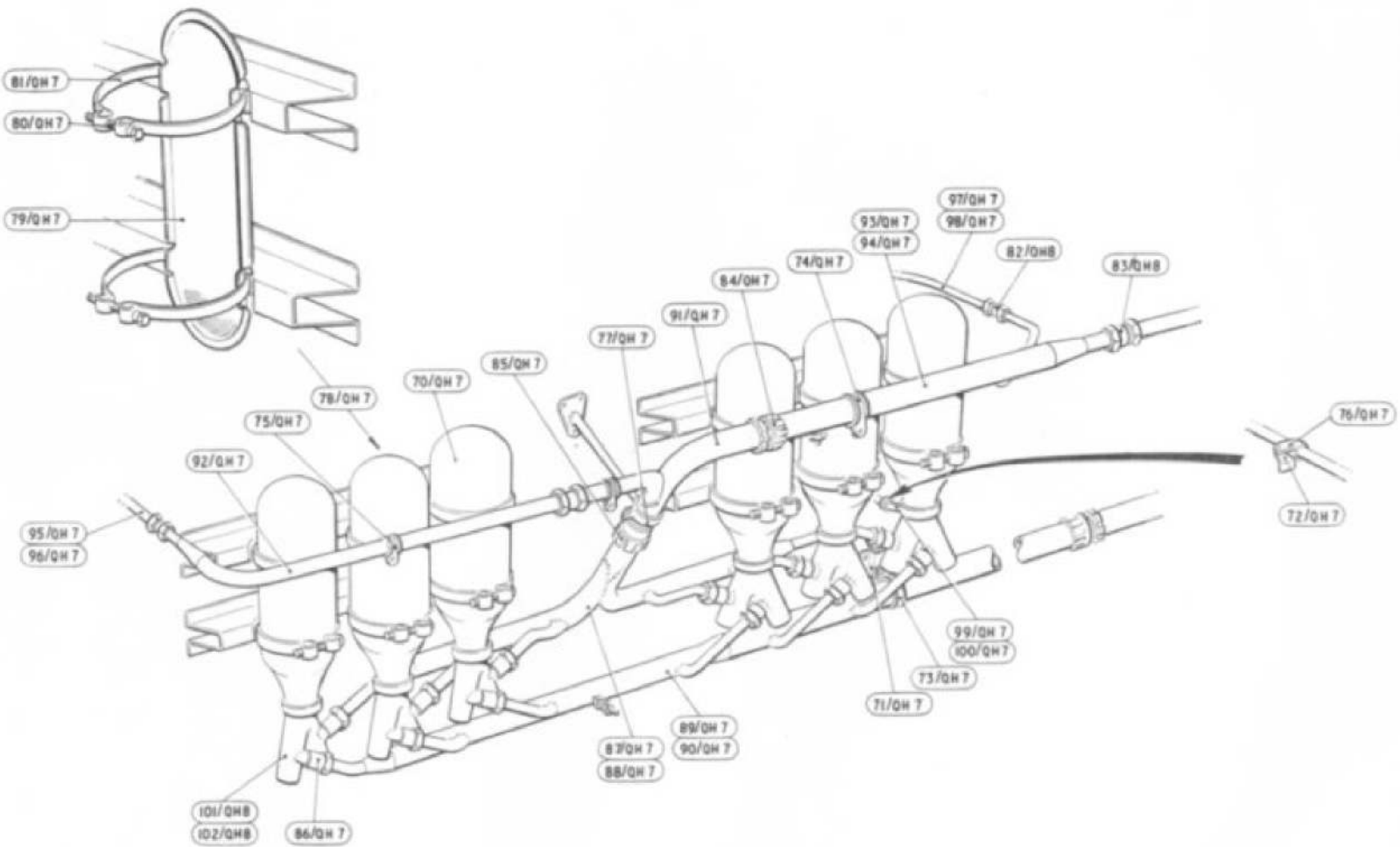
RESTRICTED

RESTRICTED

PLATE No QH 3
ISSUE 1

RESTRICTED

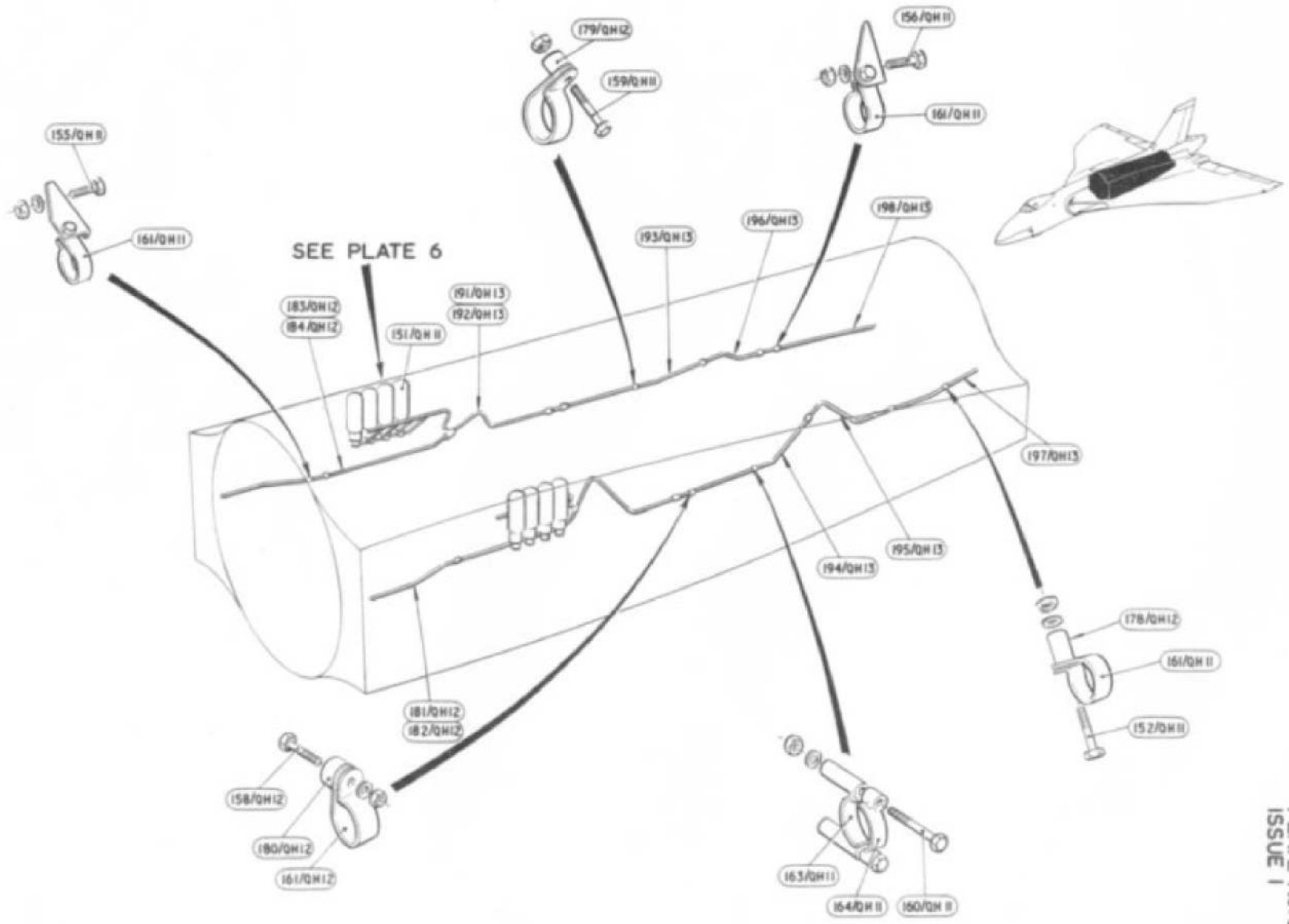
PLATE No. Q.H.4
ISSUE 1



FIRE EXTINGUISHER SYSTEM
BOTTLES METHYC BROMIDE ON TRANSPORT RIB, PORT AND STBD.

RESTRICTED

FIRE EXTINGUISHER SYSTEM
BOMB BAY PORT AND STBD

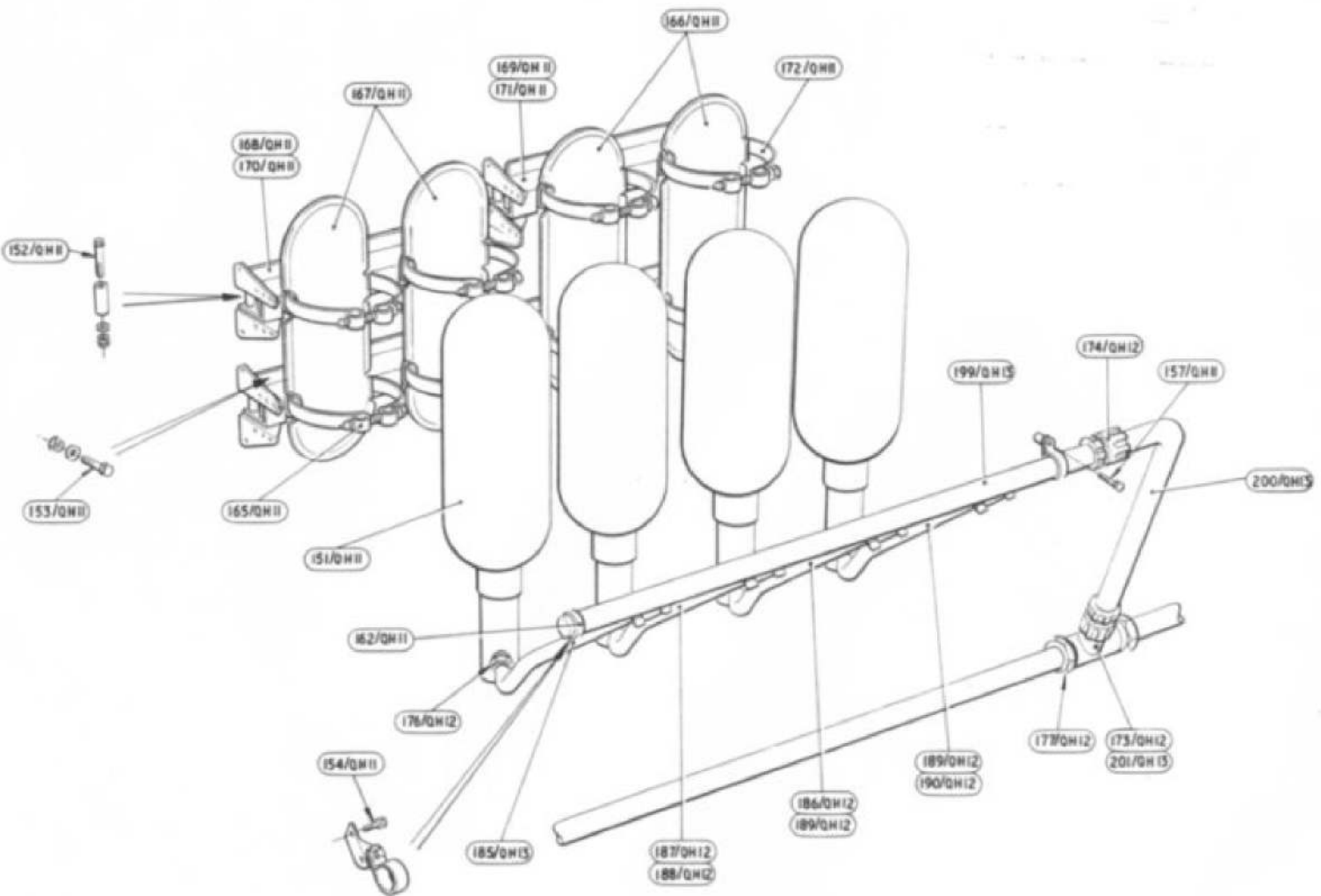


RESTRICTED

RESTRICTED

RESTRICTED

PLATE No. OH 6
ISSUE 1



FIRE EXTINGUISHER SYSTEM
BOMB BAY - PORT AND STBD

RESTRICTED



This file was downloaded
from the RTFM Library.

Link: www.scottbouch.com/rtfm

Please see site for usage terms,
and more aircraft documents.