

VULCAN Mk. 2

SERVICES
FUEL SYSTEM
AFT OF FRONT SPAR

Page QJ. 1

Ref. No.	Part No.	Description	No. off	Matl. Spec.	Cl. of St.	Plate and Illust'n No.
					M.R.	
		1 2 3 4				
		FUEL SYSTEM AFT OF FRONT SPAR, PORT & STARBOARD (100—101P3164) Spares for:—				
27F/4526675	AVERY HARDOLL LTD. FC109	Cap	1	—	B	QJ1/1
	34P3164	Clip, half, top, for 3-1/2" dia. pipe	1	—		
1634	9/SS1862	Clip, half, top, for 1-1/2" dia. pipe	4	—	MR	QJ3/3
1620	15/SS1862	Clip, half, top, for 2" dia. pipe	10	—	C	QJ3/4
	169/SS4095	Clip, half, bottom, for 1-1/2" dia. pipe	1	—	C	QJ3/5
1622	170/SS4095	Clip, half, bottom, for 1-1/2" dia. pipe	1	—	MR	QJ3/6
1626	172/SS4095	Clip, half, bottom, for 2" dia. pipe	1	—	C	
	251/SS4095	Clip, half, bottom, for 2" dia. pipe	4	—	C	QJ3/8
	252/SS4095	Clip, half, bottom, for 2" dia. pipe	3	—		QJ3/9
	253/SS4095	Clip, half, bottom, for 2" dia. pipe	4	—	MR	QJ3/10
26FP/10703	BA5/SS4234	Clip, half, top, for 2" dia. pipe	1	—	MR	QJ3/11
	BA6/SS4234	Clip, half, top, for 2" dia. pipe	2	—	C	QJ3/12
	BA15/SS4234	Clip, half, bottom, for 2" dia. pipe	1	—		QJ3/13
	BA22/SS4234	Clip, half, bottom, for 2" dia. pipe	2	—	MR	QJ3/14
1433990	B66/SS4234	Clip, half, top (Pre-Mod. 996)	1	—	MR	QJ3/15
	BG19/SS4234	Clip, half, bottom (Pre-Mod. 996)	1	—	C	QJ3/16
	1/SS4471	Clip, half, top, for 3-1/2" dia. pipe	2	—	MR	QJ3/17
	1/SS4477	Clip, half, bottom, for 3-1/2" dia. pipe	1	—		QJ3/18
	2/SS4477	Clip, half, bottom, for 3-1/2" dia. pipe	1	—	MR	QJ3/19
	7/SS4477	Clip, half, bottom, for 3-1/2" dia. pipe	1	—	MR	QJ3/20
	26/SS4490	Clip, bonding, for 1-3/16" dia. pipe	9	—	MR	QJ3/21
	34/SS4490	Clip, bonding, for 2" dia. pipe	29	—	MR	QJ3/22
26FP/13091	51/SS4490	Clip, bonding, for 3-1/2" dia. pipe	8	—	MR	QJ3/23
	2/SS3264	Clip, bonding	2	—	C	QJ3/24
	34/SS1973	Clip, bonding	2	—	MR	QJ3/25
27F/2213	VICKERS ARMSTRONG A5369/K VICKERS ARMSTRONG	Cock, type R1-1/2" B.S.P. (hand)	1	—	A	QJ3/26
		Cock, type R.2" (electrical)	4P 3S	—		QJ3/27
		Consisting of:—				
27F/4526689	A5262M	Cock	1	—	A	
5W/4511948	—	Actuator	1	—	A	
27FR/ 1056588	FLIGHT RE-FUELLING FRS110/K FLIGHT RE-FUELLING	Coupling, pipe, 1-1/2" dia.	8	—	B	QJ3/28
27FR/ 1056583	FLIGHT RE-FUELLING FRS110/M FLIGHT RE-FUELLING	Coupling, pipe 2" dia.	20	—	B	QJ3/29
	FRS325/T AVERY HARDOLL LTD. FC426 Mk. 11 KING A/C LTD. C5471	Coupling, pipe, 3-1/2" dia.	4	—		QJ3/30
		Coupling, douser alt. FC246	1	—		QJ1/31
		Coupling, flexible, fireproof, 1-1/2" dia. Mk. 1 only	4	—	MR	

SERVICES
FUEL SYSTEM
AFT OF FRONT SPAR

Ref. No.	Part No.	Description	No. off	Matl. Spec.	Cl. of St.	Plate and Illust'n No.
					M.R.	
		1 2 3 4				
	KING A/C LTD. C5623/M	Coupling, flexible, fireproof, 2" dia.	2	—	MR	QJ3/33
	KING A/C LTD. C8032	Coupling, flexible, fireproof, 2" dia.	2	—	MR	QJ3/34
	6P2853	HANDLE, OPERATING SERVICE COCK, GROUP	1	—	MR	QJ1/35
	84P2890	Lever, special operating, fuel cock	1	L650/L40	MR	QJ1/36
	105P3164	PANEL, ACCESS, FUEL SERVICE COCK, GROUP ATTACHMENTS—PANEL, PART No. 105P3164	1	—	MR	QJ1/37
28FP/ 4062411	A5/35	Fastener, dzus	8	—	C	
28FP/ 9436928	S5/225	Spring, dzus	8	—	C	
9405	106P2890	Pin, lever, fuel cock	1	L57	C	QJ1/38
	4/SS2684	Pin, attachment, rod to handle	1	—		QJ1/39
	4P3164	PIPE, REFUELLING, FROM JOINT	1	—		QJ1/40
		FORWARD FRONT SPAR TO JOINT BELOW No. 2, AIR INTAKE CENTRE, GROUP (Pre-Mod. 526)				
20037	3P3584	PIPE, REFUELLING, FROM JOINT	1	—	C	QJ1/41
		FORWARD FRONT SPAR TO JOINT BELOW No. 2 AIR INTAKE CENTRE, GROUP (Mod. 526)				
	19P3164	Pipe, refuelling, from joint forward front ... spar, to joint below No. 2 air intake, centre, starboard	1	L54/L59	MR	QJ2/42
	5P3164	Pipe, branch, refuelling joint below No. 2 air intake, to joint below No. 1 air intake, port	1	L54/L59		QJ1/43
6930	6P3164	Pipe, branch, refuelling joint below No. 2 air intake, to joint below No. 1 air intake, starboard	1	L54/L59	C	QJ2/44
6931	7P3164	Pipe, refuelling, joint below No. 1 air intake, to joint outboard, Fig. 162.5, port	1	L54/L59	C	QJ1/45
	8P3164	Pipe, refuelling, joint below No. 4 air intake . to joint outboard, Fig. 162.5, starboard	1	L54/L59		QJ2/46
	9P3164	PIPE, DE-FUELLING FROM VICKERS HAND COCK TO NON RETURN VALVE, 1-1/2" o/d x 20G, PORT, GROUP	1	L54	MR	QJ1/47
	10P3164	PIPE, DE-FUELLING FROM VICKERS HAND COCK TO NON RETURN VALVE, 1-1/2" o/d x 20G, STBD., GROUP	1	L54	MR	QJ2/48
	13P3164	PIPE, BY-PASS FROM SAUNDERS NON RETURN VALVE RIB 63.5 TO UNION FORWARD, 1/4" o/d x 22G PORT, GROUP	1	L54	MR	QJ1/49

**SERVICES
FUEL SYSTEM
AFT FRONT SPAR**

Ref. No.	Part No.	Description	No. off	Matl. Spec.	Cl. of St.	Plate and Illust'n No.
					M.R.	
		1 2 3 4				
5667	14P3164	PIPE, BY-PASS, FROM SAUNDERS NON-RETURN VALVE, RIB 63-5 TO UNION, AFT, $\frac{1}{2}$ " o/d \times 20G, PORT, GRP.	1	T55	C	QJ1/50
5668	15P3164	PIPE, BY-PASS, FROM SAUNDERS NON-RETURN VALVE, RIB 113-3 TO UNION, FORWARD, $\frac{1}{2}$ " o/d \times 22G, GRP.	1	T55	C	QJ1/51
	16P3164	PIPE, BY-PASS, FROM SAUNDERS NON-RETURN VALVE, RIB 113-3 TO UNION, FORWARD, $\frac{1}{2}$ " o/d \times 22G, GRP.	1	L54	MR	QJ1/52
	17P3164	PIPE, BY-PASS, FROM SAUNDERS NON-RETURN VALVE, RIB 63-5 TO UNION, AFT, $\frac{1}{2}$ " o/d \times 22G, STBD., GROUP	1	T55	MR	QJ2/53
	18P3164	PIPE, BY-PASS, FROM SAUNDERS NON-RETURN VALVE, RIB 63-5 TO UNION, FORWARD, $\frac{1}{2}$ " o/d \times 22G, STARBOARD, GROUP	1	L54	MR	QJ2/54
	32P3164	Pipe, fuel, from Vickers Cock, centre, front spar to joint port (Pre-Mod. 996)	1	—	MR	QJ1/55
	33P3164	Pipe, fuel, from Vickers Cock, centre, front spar to joint starboard (Pre-Mod. 996)	1	—	MR	QJ1/56
7936	43P3164	PIPE, FUEL, JOINT AFT OF ENGINE BULKHEAD, 63-19 TO FLEXIBLE FIRE-PROOF COUPLING ALONG-SIDE RIB 635 No. 2 ENGINE, 2" o/d \times 22G, PORT, GROUP	1	T55	C	QJ1/57
7934	44P3164	PIPE, FUEL, BETWEEN FLEXIBLE FIRE-PROOF COUPLINGS, No. 2 ENGINE, 2" o/d \times 22G, PORT, GROUP	1	T55	C	QJ1/58
7937	45P3164	PIPE, FUEL, FROM JOINT AFT OF ENGINE BULKHEAD, 63-19 TO FLEXIBLE FIRE-PROOF COUPLING ALONG-SIDE RIB 113-3 No. 1 ENGINE, 2" o/d \times 22G, PORT, GROUP	1	T55	C	QJ1/59
7935	46P3164	PIPE, FUEL, BETWEEN FLEXIBLE FIRE-PROOF COUPLINGS, No. 1 ENGINE, 2" o/d \times 22G, PORT, GROUP	1	T55	C	QJ1/60
	47P3164	Pipe, fuel, from Vickers Cock, rib 113-3 to joint aft of engine Duckhood, 63-19 No. 4 engine, starboard	1	—	MR	QJ2/61
	48P3164	Pipe, fuel, from Vickers Cock, rib 63-5 to joint aft of engine Duckhood, 63-19 No. 3 engine, starboard	1	—	MR	QJ2/62

**SERVICES
FUEL SYSTEM
AFT OF FRONT SPAR**

Ref. No.	Part No.	Description	No. off	Matl. Spec.	Cl. of St.	Plate and Illust'n No.
					M.R.	
		1 2 3 4				
7938	49P3164	PIPE, FUEL, BETWEEN FLEXIBLE FIRE-PROOF COUPLINGS, NO. 4 ENGINE, 2" o/d x 22G, STARBOARD, GROUP	1	T55	C	QJ2/63
	62P3164	PIPE, FUEL, FROM JOINT AFT OF ENGINE BULKHEAD, 63-19 TO FLEXIBLE FIREPROOF COUPLING ON RIB 113-3, No. 3 ENGINE, 2" o/d x 22G, STARBOARD, GROUP Pre-Mod. 1814)	1	T55	MR	QJ2/64
	121P3164	PIPE, FUEL, FROM JOINT AFT OF ENGINE BULKHEAD 63-19 TO FLEXIBLE FIREPROOF COUPLING ON RIB 113-3, No. 3 ENGINE, 2" o/d x 22G, STARBOARD, GROUP (Mod. i814)	1	T55	MR	QJ2/65
	63P3164	PIPE, FUEL, FROM JOINT AFT OF ENGINE BULKHEAD, 63-19 TO FLEXIBLE FIREPROOF COUPLING ON RIB 162-5, No. 4 ENGINE, 2" o/d x 22G, STARBOARD, GROUP (Pre-Mod. 1814)	1	T55	MR	QJ2/66
	122P3164	PIPE, FUEL, FROM JOINT AFT OF ENGINE BULKHEAD, 63-19 TO FLEXIBLE FIREPROOF COUPLING ON RIB 162-5, No. 4 ENGINE, 2" o/d x 22G, STARBOARD, GROUP (Mod. 1814)	1	T55	MR	QJ2/67
1585	7P3026	PIPE, TEE, FROM JOINT BELOW No. 2, AIR INTAKE TO JOINT OUTBOARD, RIB 113-3, 1½" o/d AND 2" o/d, PORT, GROUP	1	L54	C	QJ1/68
1593	13P3026	Pipe, fuel, from joint between ribs 113-3 and 162-5 to joint outboard of rib 162-5, 2" o/d x 20G, port	1	L56	C	QJ1/69
1594	14P3026	Pipe, fuel, from joint between ribs 113-3 and 162-5 to joint outboard of rib 162-5, 2" o/d x 22G, starboard	1	L56	C	QJ2/70
	15P3026	Pipe, fuel, from joint inboard rib 162-5, to joint outboard of rib 162-5, 2" o/d x 20G, port	1	L56	MR	QJ1/71
1587	16P3026	Pipe, fuel, from joint inboard of rib 162-5 to joint outboard of rib 162-5, 2" o/d x 20G, starboard	1	L56	C	QJ2/72
	19P3026	Pipe, fuel, from joint outboard of rib 63-5 to joint outboard of rib 113-3, 1½" o/d x 20G, port	1	L56	MR	QJ1/73
1599	20P3026	Pipe, fuel, from joint outboard rib 63-5 to outboard of rib 113-3, 1½" o/d x 20G, starboard	1	L56	C	QJ2/74

VULCAN MR. 2

SERVICES
FUEL SYSTEM
AFT OF FRONT SPAR

Page QJ. 5

Ref. No.	Part No.	Description	No. off	Matl. Spec.	Cl. of St.	Plate and Illust'n No.
					M.R.	
		1 2 3 4				
	23P3026	PIPE, TEE, CROSS-FEED, BETWEEN RIBS 63.5 AND 113.3", PORT, GROUP	1	L54	MR	QJ1/75
	24P3026	PIPE, TEE, CROSS-FEED, BETWEEN RIBS 63.5 AND 113.3, STBD., GROUP	1	L54	MR	QJ2/76
	33P3026	PIPE, TEE, DE-FUELLING, CONNECTING CROSS-FEED PIPE, TO HAND-OPERATED VICKERS COCK, BETWEEN RIBS 63.5 AND 113.3, 1-1/2" o/d, PORT, GROUP	1	L54	MR	QJ1/77
	34P3026	PIPE, TEE, DE-FUELLING, CONNECTING CROSS-FEED PIPE, TO HAND-OPERATED VICKERS COCK, BETWEEN RIBS 63.5 AND 113.3, 1-1/2" o/d, STARBOARD, GROUP	1	L54	MR	QJ2/78
2750	96P3026	Pipe, vent, from tee-piece to atmosphere, inboard of rib 113.3, 1-1/2" o/d x 20G, starboard	1	L56	C	QJ2/79
13163	103P3164	Pipe	1	—	C	
	56P3164	Pipe, coupling to coupling, port (Pre-Mod. 526)	1	L56		
20035	11P3584	Pipe, coupling to coupling, port (Mod. 526)	1	L54	C	QJ1/80
1510350	57P3164	Pipe, coupling to coupling, starboard (Pre-Mod. 526)	1	L56	C	
20036	12P3584	Pipe, coupling to coupling starboard (Mod. 526)	—	L54	C	QJ2/81
	97P3026	Pipe, vent, from tee-piece to atmosphere inboard, rib 113.3, 1-1/2 o/d x 20G, port	1	L56	MR	QJ1/82
	121P3026	Pipe, fuel, between ribs 113.3 and 162.5, 2" o/d x 20G, starboard	1	L56		QJ2/83
	122P3026	Pipe, fuel, between ribs 113.3 and 162.5, 2" o/d x 20G, port	1	L56		QJ1/84
20033	123P3026	Pipe, tee, from Vickers Cock, alongside rib 63.5, 2" o/d x 189, starboard	1	L54	C	QJ2/85
	25P3026	Pipe, fuel, from Vickers Cock, alongside rib 63.5, to joint aft of engine bulkhead 63.19, No. 2 engine, port (Pre-Mod. 185)	1	—		
5842	127P3026	Pipe, fuel, from Vickers Cock, alongside rib 63.5 to joint aft of engine bulkhead 63.19, No. 2 engine, port (Mod. 185)	1	—	C	
	124P3026	Pipe, tee, from Vickers Cock, alongside rib 63.5 2" o/d x 18G, port (Pre-Mod. 185)	1	—		QJ1/86
	128P3026	Pipe, tee, from Vickers Cock, alongside rib 63.5 2" o/d x 18G, port (Mod. 185)	1	L56	MR	QJ1/87
20034	58P3164	PIPE, FUEL, COUPLING TO COUPLING, GROUP	1	—	C	QJ1/88

SERVICES
FUEL SYSTEM
AFT OF FRONT SPAR

Ref. No.	Part No.	Description	No. off	Matl. Spec.	Cl. of St.	Plate and Illust'n No.
					M.R.	
		1 2 3 4				
	129P3026	Pipe, fuel, from Vickers Cock, alongside rib 113.3, to joint aft, engine bulkhead 63.19, No. 1 engine, port	1	—		QJ1/88
	11P3026	Pipe, branch, from Vickers Cock, alongside rib 113.3, to joint, centre, No. 4 engine intake, starboard (Pre-Mod. 185)	1	—		
	131P3026	Pipe, branch, from Vickers Cock, alongside rib 113.3, to joint, centre, No. 4 engine intake, starboard (Mod. 185)	1	—	MR	QJ1/89
1592	12P3026	Pipe, branch, from Vickers Cock, alongside rib 113.3, to joint, centre, No. 4 engine intake, starboard (Pre-Mod. 185)	1	—	C	
	132P3026	Pipe, branch, from Vickers Cock, alongside rib 113.3, to joint, centre, No. 4 engine intake, starboard (Mod. 185)	1	—	MR	QJ2/90
	6P3026	Pipe, branch, from Vickers Cock, alongside rib 63.5 to joint, centre, No. 2 engine intake, starboard (Pre-Mod. 185)	1	—		
5663	134P3026	Pipe, branch, from Vickers Cock, alongside rib 63.5, to joint, centre, No. 2 engine intake, starboard (Mod. 185)	1	—	C	QJ2/92
1583	5P2890	Pipe, branch, from Vickers Cock, alongside rib 63.5, to joint, centre, No. 2 engine intake, port	1	L54	C	QJ1/92
7947	35P3164	Ring, stiffening, cut-out, for fuel pipes	4	L72	C	QJ1/93
	36P3164	Ring, half, asbestos, for fuel pipe output on engine, bulkhead 63.19	4	—	MR	QJ1/94
	62P3026	ROD, CONNECTING, FOR HAND-OPERATED SERVICE COCK, PORT, GROUP	1	—		QJ1/95
	126P3026	ROD, CONNECTING, FOR HAND-OPERATED SERVICE COCK, STARBOARD, GROUP	1	—		QJ1/96
1568	1SS3852	Screw, grub, for Service Cock, lever	1	—	C	QJ1/97
27FR/ 4384519	FLIGHT REFUELLING FRS185/M 7Z3092	Shield, heat, for flexible fireproof couplings	2	—	C	QJ3/98
		Spring, plunger, port	2	—	MR	QJ3/99

VULCAN Mk. 2

**SERVICES
FUEL SYSTEM
AFT OF FRONT SPAR**

Page QJ. 7

Ref. No.	Part No.	Description	No. off	Matl. Spec.	Cl. of St.	Plate and Illust'n No.
					M.R.	
		1 2 3 4				
11782	114P3164	Stay, tube (Mod. 906)	2	—	C	QJ3/100
27F/2189	ARMSTRONG A5179/K	Valve, non-return, 1½" B.S.P. (Alternative A52-87)	3	—	A	QJ1/101
	SAUNDERS 712AA02	Valve, non-return	1	—		QJ1/102
27FS/4524636	SAUNDERS N1002	Valve, non-return, ½" dia.	2	—	A	QJ1/103
	FLIGHT REFUELLING B9811000/K	Valve, non-return (Pre-Mod. 996)	4	—		QJ1/104
5052	102P3026	Washer, spherical, ⅜" dia., port	4	S1	C	

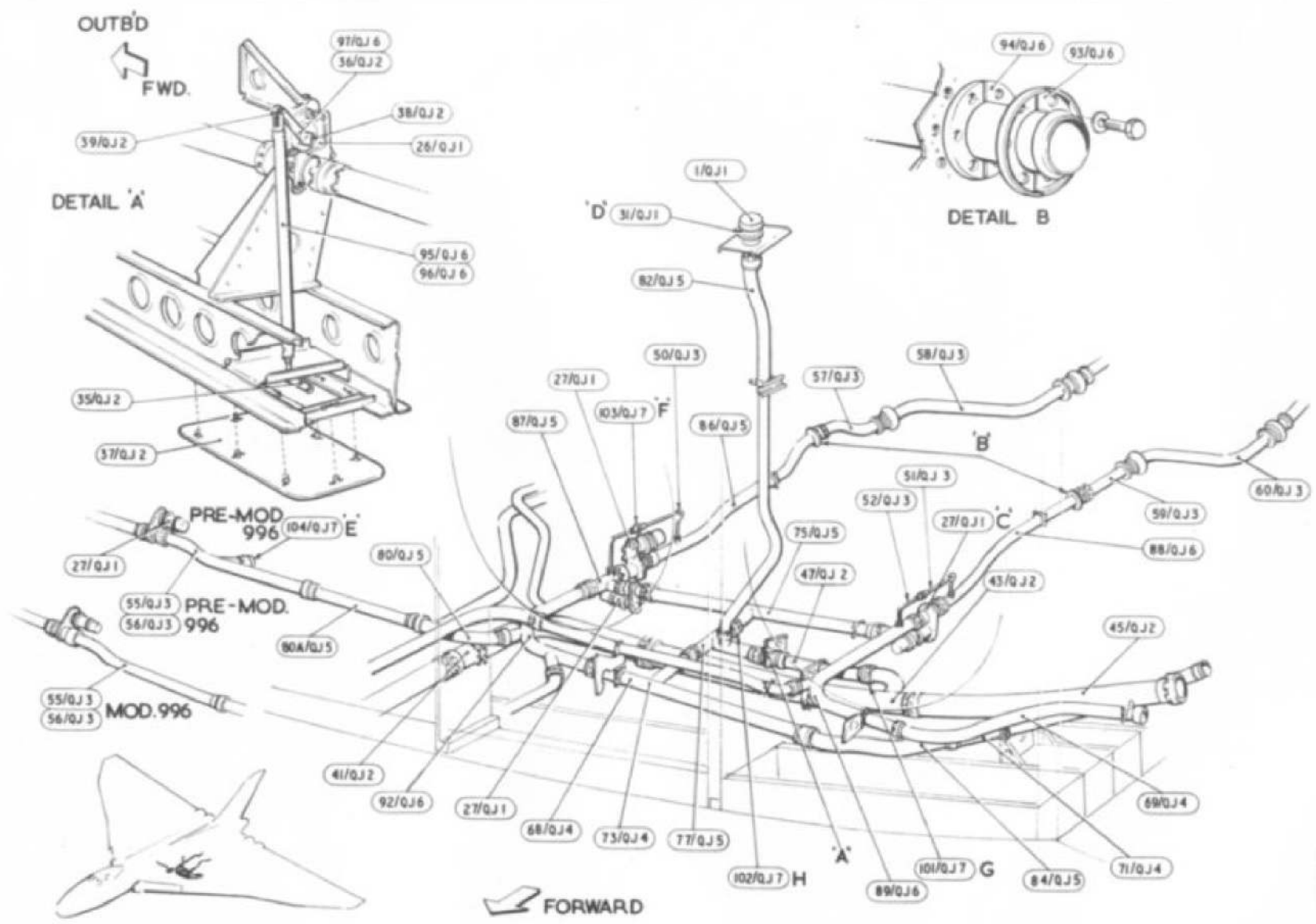
VULCAN MR. 2

SERVICES
FUEL SYSTEM
SUMMARY OF STANDARD PARTS

Page QJ. 9

Stores Ref.		No. off	Stores Ref.		No. off	Stores Ref.		No. off
Section	Ref. No.		Section	Ref. No.		Section	Ref. No.	
28FP 28FP	4062411 9436928	8 8						

FUEL SYSTEM
AFT FRONT SPAR

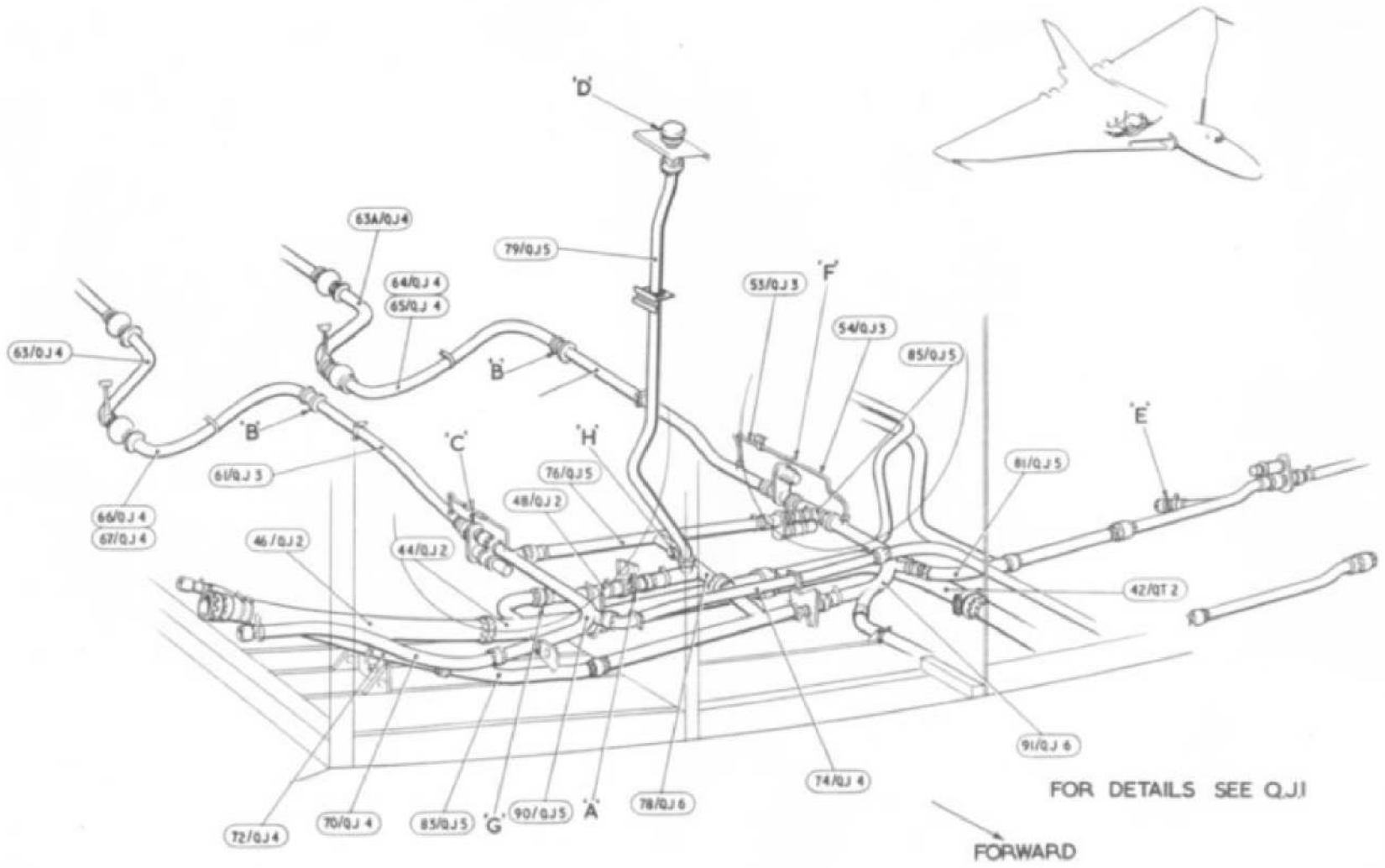


RESTRICTED

RESTRICTED

PLATE No. Q.1.
ISSUE 1

FUEL SYSTEM
AFT FRONT SPAR

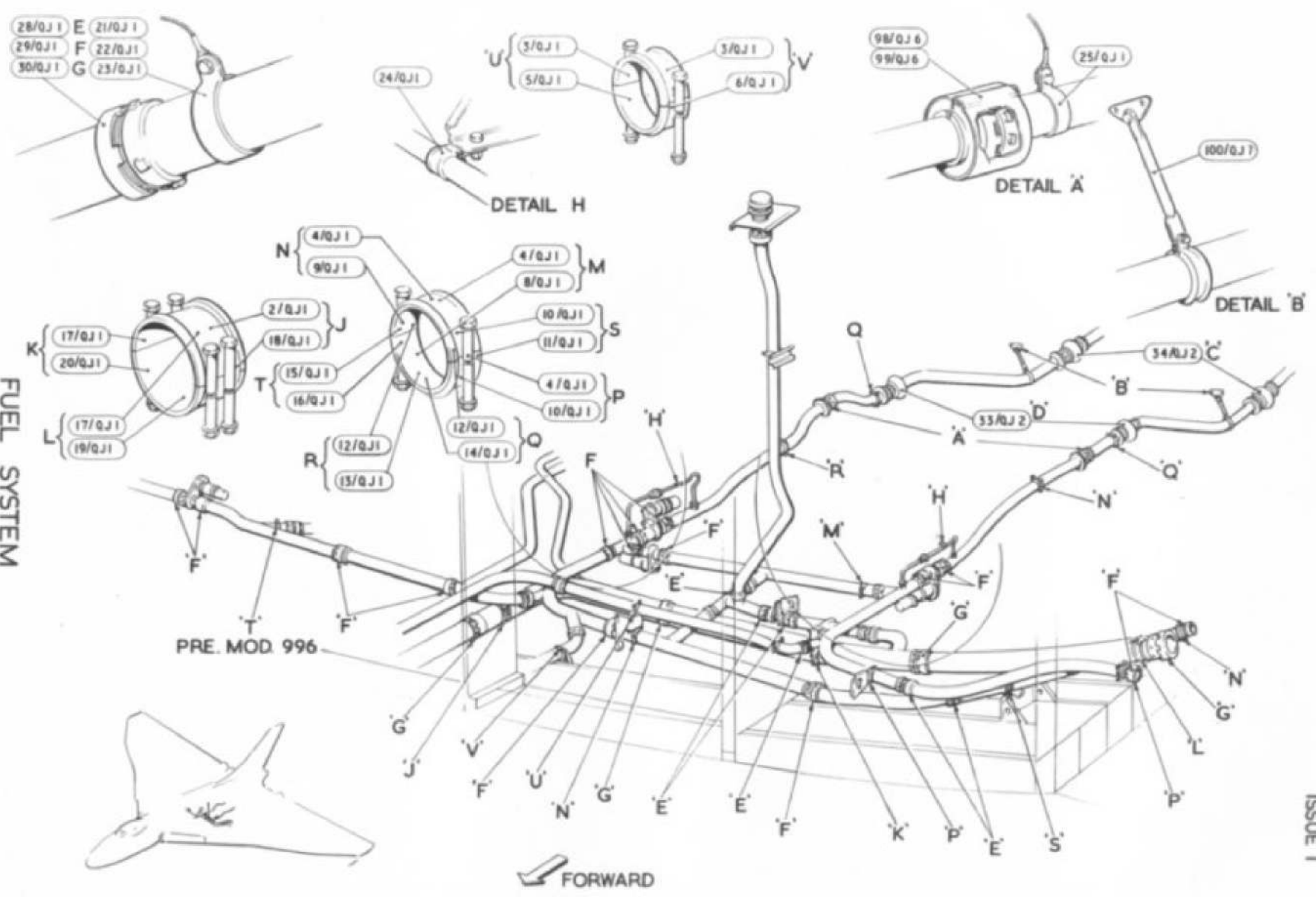


RESTRICTED

RESTRICTED

PLATE No. QJ.2
ISSUE 1

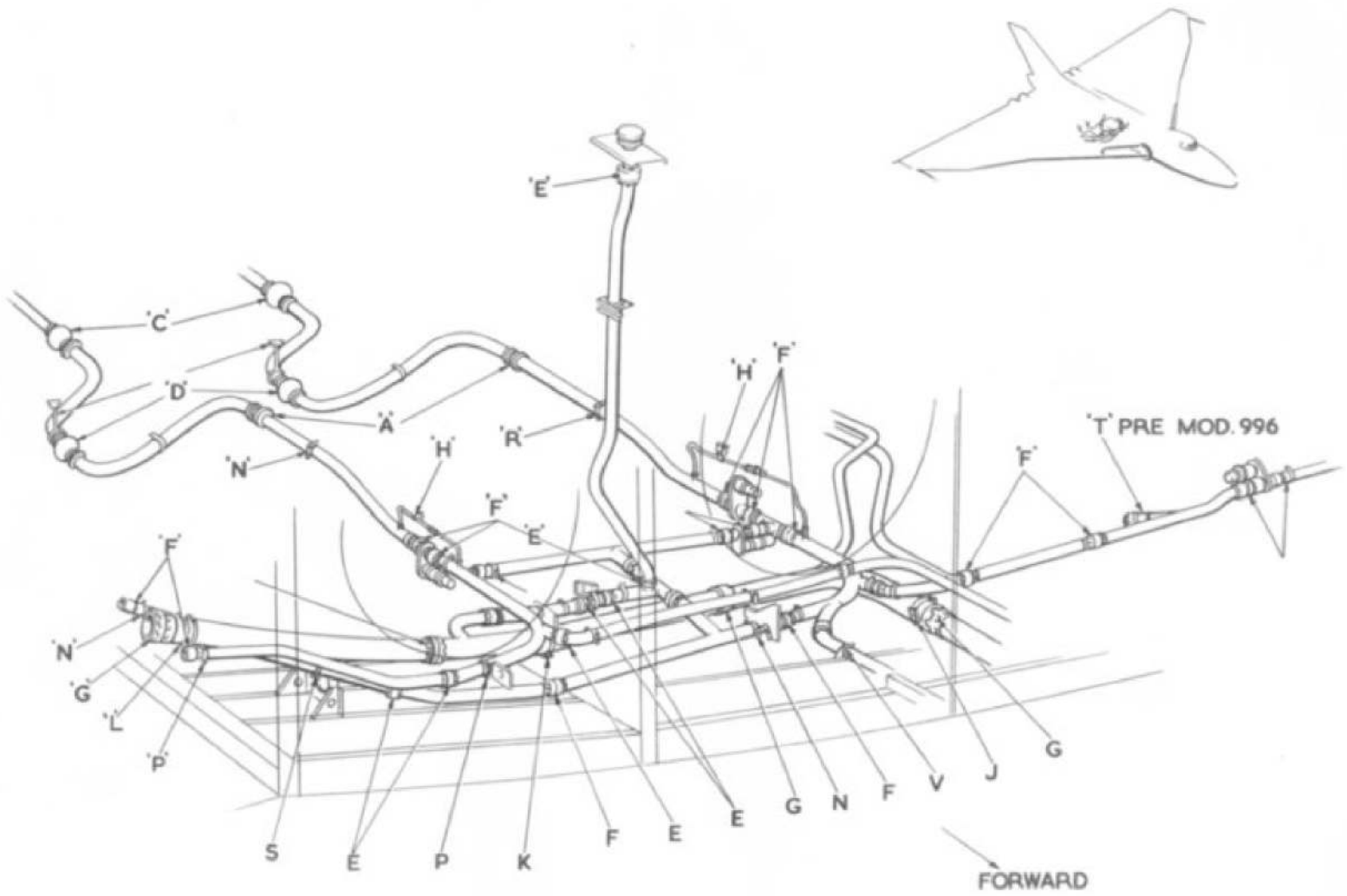
FUEL SYSTEM
AFT FRONT SPAR



RESTRICTED

RESTRICTED

FUEL SYSTEM
AFT FRONT SPAR



RESTRICTED

RESTRICTED

PLATE No. OJ 4
ISSUE 1



This file was downloaded from the RTFM Library.

Link: www.scottbouch.com/rtfm

Please see site for usage terms, and more aircraft documents.

