

SERVICES  
FUEL SYSTEM  
IN MAIN PLANE

Ref. No.	Part No.	Description	No. off	Matl. Spec.	Cl. of St.	Plate and Illust'n No.
					M.R.	
		1 2 3 4				
<b>FUEL SYSTEM IN MAIN PLANE, PORT AND STARBOARD (1 &amp; 2P3277)</b>						
Spares for:—						
9854	5P2844	Adaptor (Stbd. only) .....	1	—	C	QM1/1
20266	7P3040	BRACKET, MOUNTING, GROUP, PORT ...	1	—	C	QM1/2
20265	8P3040	BRACKET, MOUNTING, GROUP, STARBOARD	1	—	C	QM1/3
20264	19P3277	BRACKET, MOUNTING, GROUP, PORT ...	1	—	C	QM1/4
	20P3277	BRACKET, MOUNTING, GROUP, STARBOARD	1	—		QM1/5
	20P2850	Clip, pipe, 1-1/2" dia. ....	11	L72		QM1/6
20271	81P2850	Clip, pipe, 1-1/2" dia. ....	12	L72	C	QM1/7
7963	36P3277	Clip, "P", for 1-1/2" dia. pipe .....	3	L72	C	QM1/8
7964	44P3277	Clip, "P", for 2-1/4" dia. pipe .....	3	L72	C	QM1/9
7965	29P3277	Clip, half, special, for 2" dia. pipe .....	1	—	C	QM1/10
	AS5/SS4234	Clip, half, for 1-1/4" dia. pipe .....	9	—	MR	QM1/11
	AS9/SS4234	Clip, half, for 1-1/2" dia. pipe .....	3	—	MR	QM1/12
	AS12/SS4234	Clip, half, for 1-1/4" dia. pipe .....	2	—	MR	QM1/13
7953	AS18/SS4234	Clip, half, for 1-1/4" dia. pipe .....	2	—	C	QM1/14
	BA5/SS4234	Clip, half, for 2" dia. pipe .....	2	—	MR	QM1/15
	BA2/SS4234	Clip, half, for 2" dia. pipe .....	1	—		QM1/16
	BE5/SS4234	Clip, half, for 2-1/4" dia. pipe .....	2	—	MR	QM1/17
7958	BE13/SS4234	Clip, half, for 2-1/4" dia. pipe .....	2	—	C	QM1/18
	BE12/SS4234	Clip, half, for 2-1/4" dia. pipe .....	1	—		QM1/18
	BC5/SS4234	Clip, half, for 2-1/4" dia. flexible pipe .....	3	—	C	QM1/20
	BC12/SS4234	Clip, half, for 2-1/4" dia. flexible pipe .....	3	—	C	QM1/21
7955	AY5/SS4234	Clip, half, for 2" dia. flexible pipe .....	2	—	C	
7956	AY12/SS4234	Clip, half, for 2" dia. flexible pipe .....	2	—	C	
	49P3277	CLIP, HALF, GROUP .....	1	—	MR	QM1/22
	26SS4490	Clip, bonding .....	24	—	MR	QM1/23
	38SS4490	Clip, bonding .....	8	—		QM1/24
	30SS4490	Clip, bonding .....	2	—	MR	QM1/25
<b>COCKS AND PIPES, FOR TANK SERVICE ALONG U/C RIB, O/BD, PORT AND STARBOARD (17 &amp; 18P3166)</b>						
Spares for:—						
1518	4P2852	Adaptor, between cock and N/R valve .....	5	DTD364B	C	QM2/26
	AS5/SS4234	Clip, half, for 1-1/2" dia. pipe .....	3	—	MR	QM2/27
7950	AS11/SS4234	Clip, half, for 1-1/2" dia. pipe .....	3	—	C	QM2/28
	1/SS4471	Clip, half, for 3-1/2" dia. pipe .....	2	—	MR	QM2/29
	2/SS4477	Clip, half, for 3-1/2" dia. pipe .....	2	—	MR	QM2/30
6937	10/SS4478	Clip, half, for 3-1/2" dia. pipe .....	1	—	C	QM2/31
6938	41/SS4478	Clip, half, for 3-1/2" dia. pipe .....	1	—	C	QM2/32
	42/SS4478	Clip, half, for 2-1/4" dia. pipe .....	1	—		QM2/33
	43/SS4478	Clip, half, for 2-1/4" dia. pipe .....	1	—		QM2/34
	26/SS4490	Clip, bonding .....	14	—	MR	QM3/35
	34/SS4490	Clip, bonding .....	8	—	MR	QM2/36
	38/SS4490	Clip, bonding .....	2	—		QM2/37
	31/SS4490	Clip, bonding .....	5	—		
	51/SS4490	Clip, bonding .....	5	—	MR	QM2/39
	42/SS4490	Clip, bonding .....	4	—	MR	QM2/40

**SERVICES**  
**FUEL SYSTEM**  
**IN MAIN PLANE**

Ref. No.	Part No.	Description	No. off	Matl. Spec.	Cl. of St.	Plate and Illust'n No.
					M.R.	
		1 2 3 4				
		COCKS AND PIPES, FOR TANK SERVICE ALONG U/C RIB, OUTBOARD, PORT STARBOARD (17 & 18P3166) (Cont'd)				
	1P2847	COCK, FUEL SERVICE, Nos. 4, 5 & 7 . . . . FUEL TANKS, PORT, GROUP Consisting of:—	3	—		QM2/41
27F/4526679	VICKERS ARMSTRONG A5293/K	Cock, 1-1/2" B.S.P., type K, without . . . handle	1	—	A	QM3/42
	4P2847	LEVER, COCK, GROUP . . . . .	1	—	MR	QM3/32
26FP/13893	7P2847	Pin, 3/32" dia. x .80" long . . . . .	1	DTD364B		QM3/44
	1SS3852	Screw, grub, 2 BA, locking lever to . . . fuel cock	1	—	C	QM3/45
	2P2847	COCK, FUEL SERVICE, Nos. 4, 5 & 7 . . . . FUEL TANKS, STARBOARD, GROUP Consisting of:—	3	—		QM2/46
27F/4526679	VICKERS ARMSTRONG A5293/K	Cock, 1-1/2" BSP, type K, without . . . . . handle	1	—	A	QM3/42
	8P2847	LEVER, COCK, GROUP . . . . .	1	—	MR	QM3/47
26FP/13893	7P2847	Pin, 3/32" dia. x .80" long . . . . .	1	DTD364B		QM3/44
	1SS3852	Screw, grub, 2 BA, locking lever to fuel . . cock	1	—	C	QM3/45
	3P2847	COCK, FUEL, SERVICE, Nos. 3 & 6, . . . . FUEL TANK, GROUP Consisting of:—	2	—		QM2/48
27F/4526679	VICKERS ARMSTRONG A5293/K	Cock, 1-1/2" BSP, type K, without handle	1	—	A	QM3/42
13774	6P2847	LEVER, COCK, GROUP . . . . .	1	—	MR	QM3/49
	7P2847	Pin, 3/32" dia. x .80" long . . . . .	1	DTD364B		QM3/44
	1SS3852	Screw, grub, 2 BA, locking lever to fuel . . cock	1	—		QM3/45
27FR/1057698	FLIGHT REFUELLING FRS110/K/1	Coupling, pipe, 1-1/4" dia. . . . .	4	—	B	QM2/50
27FR/1056583	FLIGHT REFUELLING FRS110/M/1	Coupling, pipe, 2" dia. . . . .	3	—	B	QM2/51
	FLIGHT REFUELLING FRS110/N	Coupling, pipe, 2-1/4" dia. . . . .	1	—		QM2/52
	FLIGHT REFUELLING FRS110/P	Coupling, pipe, 2-1/2" dia. . . . .	2	—		QM2/53

SERVICES  
FUEL SYSTEM  
IN MAIN PLANE

Ref. No.	Part No.	Description	No. off	Matl. Spec.	Cl. of St.	Plate and Illust'n No.
					M.R.	
		1 2 3 4				
		COCKS AND PIPES, FOR TANK SERVICE ALONG U/C RIB, OUTBOARD, PORT AND STARBOARD (17 & 18P3166) (Cont'd)				
7967	FLIGHT REFUELLING FRS325/T 15P3166 16P3166	Coupling, pipe, 3-1/2" dia. ....	1	—		QM2/54
		Duct, refuelling, to No. 6 fuel tank, port ...	1	L54 or L59	C	QM2/55
		Duct, refuelling, to No. 6 fuel tank, ... starboard	1	L54 or L59	MR	QM2/56
	11P3166	FAIRLEAD, PORT, GROUP .....	1	—		QM2/57
	11aP3166	Consisting of:— Fairlead, half .....	1	—		
	11bP3166	Fairlead, half .....	1	—		
	12P3166	FAIRLEAD, STARBOARD, GROUP .....	1	—		QM2/58
	12aP3166	Consisting of:— Fairlead, half .....	1	—		
	12bP3166	Fairlead, half .....	1	—		
	10P2852	PIPE, BRANCH, 2-WAY, PORT AND ... STARBOARD, GROUP	1	—	MR	QM2/59
	62P2852	PIPE, BRANCH, 3-WAY, STARBOARD, .. GROUP	1	—	MR	QM2/60
22210	25P3166	PIPE, BRANCH, 3-WAY, PORT, GROUP ..	1	—	C	QM2/61
	4P3166	PIPE, refuelling, from joint aft of forward .. U/C backhead to wing transport joint, 3-1/2" o/d x 18G, port	1	L56 & L59	MR	QM2/62
6948	5P3166	Pipe, refuelling, from joint aft of forward .. U/C bulkhead to refuelling branch pipe, 3-1/2" o/d x 18G, port	1	L54 or L59	C	QM2/63
6950	7P3166	Pipe, branch, to refuelling unit, port .....	1	L54 or L59	C	QM2/64
6951	8P3166	Pipe, branch, to refuelling unit, starboard ..	1	L54 or L56	C	QM2/65
	88P3291	PIPE, FUEL, FROM NON-RETURN .....	1	L34 or L54	MR	QM2/66
		VALVE TO 3-WAY BRANCH PIPE, 2" o/d x 20G x 6' 6" LONG APPROX., STARBOARD, GROUP				
1505160	96P3291	Pipe, fuel, from non-return valve, 2" o/d x . 20G x 4' 10" long approx., starboard	1	L56	C	QM2/67
	27P2852	Pipe, fuel, from non-return valve, 2" o/d x . 20G x 4' 10" long approx., port	1	L56	MR	QM2/68

SERVICES  
FUEL SYSTEM  
IN MAIN PLANE

Ref. No.	Part No.	Description	No. off	Matl. Spec.	Cl. of St.	Plate and Illust'n No.
					M.R.	
		1 2 3 4				
		COCKS AND PIPES, FOR TANK SERVICE ALONG U/C RIB, OUTBOARD, PORT AND STARBOARD (17.18P3166) (Cont'd)				
	89P3291	PIPE, FUEL, FROM NON-RETURN VALVE, TO 3-WAY BRANCH PIPE, 2" o/d x 20G x 6' 6" LONG APPROX., PORT, GROUP	1	L56	MR	QM2/69
1508	49P2852	PIPE, FUEL, TO No. 4 TANK, FROM NON-RETURN VALVE AT COCK, TO JOINT AT WING RIB 252.186, 1-1/2" o/d x 20G x 5' 6" LONG APPROX., PORT, GROUP	1	L56	C	QM2/70
1509	50P2852	PIPE, FUEL, TO No. 4 TANK FROM NON-RETURN VALVE AT COCK, TO JOINT AT WING RIB 252.186, 1-1/2" o/d x 20G x 5' 6" LONG APPROX., STARBOARD, GROUP	1	L56	C	QM2/71
1510	51P2852	PIPE, FUEL, TO No. 7 TANK FROM NON-RETURN VALVE AT COCK, TO JOINT AT WING RIB 252.186, 1-1/2" o/d x 20G x 5' 3" LONG APPROX., PORT, GROUP	1	L56	C	QM2/72
1511	52P2852	PIPE, FUEL, TO No. 7 TANK FROM NON-RETURN VALVE AT COCK, TO JOINT AT WING RIB 252.186, 1-1/2" o/d x 20G x 5' 3" LONG APPROX., STARBOARD, GROUP	1	L56	C	QM2/73
	53P2852	PIPE, FUEL, TO No. 3 TANK FROM NON-RETURN VALVE AT COCK, TO JOINT AT WING RIB 252.186, 1-1/2" o/d x 20G x 4' 0" LONG APPROX., PORT, GROUP	1	L56	MR	QM2/74
1515	54P2852	PIPE, FUEL, TO No. 3 TANK FROM NON-RETURN VALVE AT COCK, TO JOINT AT WING RIB 252.186, 1-1/2" o/d x 20G x 4' 0" LONG APPROX., STARBOARD, GROUP	1	L56	C	QM2/75
	55P2852	PIPE, FUEL, TO No. 5 TANK FROM NON-RETURN VALVE AT COCK, TO JOINT AT WING RIB 252.186, 1-1/2" o/d x 20G x 5' 6" LONG APPROX., PORT, GROUP	1	L56	MR	QM2/76
1513	56P2852	PIPE, FUEL, TO No. 5 TANK FROM NON-RETURN VALVE AT COCK, TO JOINT AT WING RIB 252.186, 1-1/2" o/d x 20G x 5' 6" LONG APPROX., STARBOARD, GROUP	1	L56	C	QM2/77

**SERVICES  
FUEL SYSTEM  
IN MAIN PLANE**

Ref. No.	Part No.	Description	No. off	Matl. Spec.	Cl. of	Plate and Illust'n No.
					St. M.R.	
		1 2 3 4				
		<b>COCKS AND PIPES FOR TANK SERVICE ALONG U/C RIB, OUTBOARD PORT AND STARBOARD (17 &amp; 18P3166) (Cont'd)</b>				
	14P2852	PIPE, FUEL, TO No. 6 TANK, FROM NON-RETURN VALVE AT COCK, TO JOINT AT WING RIB 352-186, 1½" o/d × 20G × 4' 6" LONG APPROX., STARBOARD, GROUP	-	L56	MR	QM2/78
	15P2852	PIPE, FUEL TO No. 6 TANK FROM NON-RETURN VALVE AT COCK TO JOINT AT WING RIB 352-186, 1½" o/d × 20G × 4' 6" LONG APPROX., PORT, GROUP	-	L56	MR	QM2/79
22208	64P2852	Pipe, fuel, to No. 4 tank from joint to joint between outboard U/c rib and wing rib 352-186, 1½" o/d × 20G, port	1	L56	C	QM2/80
	65P2852	Pipe, fuse to No. 4, tank from joint to joint between outboard u/c rib and wing rib 352-186, 1½" o/d × 20G, starboard	1	L56		QM2/81
	66P2852	Pipe, fuel, to No. 7 tank from joint to joint between outboard u/c rib and wing rib 352-186, 1½" o/d × 20G, port	1	L56		QM2/82
	67P2852	Pipe, fuel to No. 7 tank, from joint to joint between outboard u/c rib and wing rib 352-186, 1½" o/d × 20G, starboard	1	L56		QM2/83
7131	19P3166	Pipe, re-fuelling, from joint aft of forward u/c bulkhead, to re-fuelling branch pipe, starboard	1	—	C	QM2/84
	68P2852	Pipe, fuel, to No. 3 tank, from joint to joint between outboard u/c rib and wing rib 352-186, 1½" o/d × 20G, port	1	L56		QM2/85
	69P2852	Pipe, fuel, to No. 3 tank from joint to joint between outboard u/c rib and wing rib 352-186, 1½" o/d × 20G, starboard	1	L56		QM2/86
	70P2852	Pipe, fuel, to No. 5 tank, from joint to joint between outboard u/c rib and wing rib 352-186, 1½" o/d × 20G, port	1	L56		QM2/87
	71P2852	Pipe, fuel to No. 5 tank from joint to joint between outboard u/c rib and wing rib 352-186, 1½" o/d × 20G, starboard	1	L56		QM2/88

**SERVICES  
FUEL SYSTEM  
IN MAIN PLANE**

Ref. No.	Part No.	Description	No. off	Mati. Spec.	Cl. of St.	Plate and Illust'n No.
					M.R.	
		1 2 3 4				
<b>COCKS &amp; PIPES FOR TANK SERVICE ALONG U/C RIB, OUTBOARD, PORT &amp; STARBOARD (18-17P3166) (Cont'd)</b>						
<b>PIPES, FUEL, IN UNDERCARRIAGE BAY, FOR AUXILIARY AIRBORNE POWER PLANT STARBOARD (3P3292)</b>						
Spares for :—						
7126	9P3292	PIPE, FUEL, $\frac{3}{8}$ " o/d $\times$ 20G $\times$ 8' 4" LONG APPROX., GROUP	1	L56	C	QM3/89
7127	10P3292	PIPE, FUEL, $\frac{3}{8}$ " o/d $\times$ 20G $\times$ 7' 0" LONG APPROX., GROUP	1	L56	C	QM3/90
7128	11P3292	PIPE, FUEL, $\frac{3}{8}$ " o/d $\times$ 20G $\times$ 9' 5" LONG APPROX., GROUP	1	L56	C	QM3/91
7129	12P3292	PIPE, FUEL, $\frac{3}{8}$ " o/d $\times$ 20G $\times$ 15' 0" LONG APPROX., GROUP	1	L56	C	QM3/92
	13P3292	PIPE, FUEL, $\frac{3}{8}$ " o/d $\times$ 20G $\times$ 4' 0" LONG APPROX., GROUP	1	L56	MR	QM3/93
	FLIGHT REFUELLING B9811000/C	Valve, non-return ... ..	2	—	A	QM3/94
<b>RODS, MANUAL OPERATED, FOR TANKS Nos. 3, 4, 5, 6 &amp; 7, PORT &amp; STARBOARD (1, 2, 3 &amp; 4P3051)</b>						
Spares for : —						
	6P2853	HANDLE, TANK, GROUP ...	1	—	MR	QM3/95
	11P3051	ROD, OPERATING, FOR TANKS Nos 3 AND 6, GROUP	1	—	MR	QM3/96
	12P3051	ROD, OPERATING, FOR TANKS Nos. 3 AND 6, GROUP	1	—	MR	QM3/97
	19P3051	ROD, OPERATING, FOR TANKS Nos. 4, 5 AND 7, GROUP	1	—	MR	QM3/98
	20P3051	ROD, OPERATING, FOR TANKS Nos. 4, 5 AND 7, GROUP	1	—	MR	QM3/99
	21P3051	ROD, OPERATING, FOR TANKS Nos. 4, 5 AND 7, GROUP	1	—	MR	QM3/100
9423	22P3051	Stop, operating rod, tanks Nos. 3 & 6	1	BSS668	MR	QM3/101
	23P3051	Stop, operating rod, tanks Nos. 3 & 6	1	BSS668	C	QM3/102
	24P3051	Stop, operating rod, tanks Nos. 4, 5 & 7	1	BSS668	MR	QM3/103
	25P3051	Stop, operating rod, tanks Nos. 4, 5 & 7	1	BSS668	MR	QM3/104
	26P3051	Stop, operating rod, tanks Nos. 4, 5 & 7	1	BSS668	MR	QM3/105

**SERVICES  
FUEL SYSTEM  
IN MAIN PLANE**

Ref. No.	Part No.	Description	No. off	Matl. Spec.	Cl. of	Plate and Illust'n No.
					St.	
		1 2 3 4			M.R.	
		<b>COCKS AND PIPES FOR TANK SERVICE ALONG U/C RIB, OUTBOARD, PORT &amp; STARBOARD (17-18P3166) (Cont'd)</b>				
27F/2189	VICKERS ARMSTRONG AS179/K	Valve, non-return, 1½" BSP (Alternative A5287)	4	—	A	QM2/106
	75P2852	Valve, non-return, 1½", No. 3 tank (Mod. 362)	1	—		QM2/107
	76P2852	Valve, non-return, 1½" No. 3 tank alternative to be used when existing stocks of 75P2852 are exhausted)	1	—		
	15S4081	Washer, joint adapter to non-return valve	5	—	MR	QM2/108
27FR/1057698	FLIGHT REFUELLING FRS110/K	Coupling, pipe, 1½" dia. ... ..	12	—	B	QM1/109
27FR/1056583	FLIGHT REFUELLING FRS110/M	Coupling, pipe, 2" dia. ... ..	3	—	B	QM1/110
	FLIGHT REFUELLING FRS110/N	Coupling, pipe, 2¼" dia. ... ..	2	—		QM1/111
8730	57P3277	Pipe, refuelling, joint, inboard of outboard u/c rib to joint between ribs 422-186 and 436-186, 2¼" o/d × 20G × 7' 3" long approx.	1	L56	C	QM1/112
	58P3277	Pipe, refuelling, from 4-way piece between fuel sump 3 & 4 to 3-way piece, between Nos. 562-186 and 57-6186, 2" o/d × 20G × 8' 0" long approx.	1	L56		QM1/113
9182	59P3277	PIPE, REFUELLING FROM 4-WAY PIECE TO No. 4 TANK SUMP, 2" o/d × 20G × 14" LONG APPROX., PORT, GROUP	1	L54 or L59	C	QM1/114
9183	60P3277	PIPE, REFUELLING, FROM 4-WAY PIECE, TO No. 4 TANK SUMP 2" o/d × 20G × 14" LONG APPROX., STARBOARD, GROUP	1	L54 or L59	C	QM1/115
8727	55P3277	PIPE, 3-WAY JOINT, FOR REFUELLING PIPES, INBOARD, ELEVATOR AND AILERON HINGE RIB, 1½" o/d × 20G, PORT, GROUP	1	—	C	QM1/116

SERVICES  
FUEL SYSTEM  
IN MAIN PLANE

Ref. No.	Part No.	Description	No. off	Matl. Spec.	Cl. of	Plate and Illust'n No.
					St. M.R.	
		1 2 3 4				
8728	56P3277	PIPE, 3-WAY JOINT, FOR REFUELLING ... PIPES, INBOARD ELEVATOR AND AILERON HINGE RIB, 1-1/2" o/d x 20G, STARBOARD, GROUP	1	—	C	QM1/117
8746	51P3277	PIPE, 4 WAY JOINT, FOR REFUELLING ... PIPES, INBOARD CENTRE ELEVATOR HINGE RIB, PORT, GROUP	1	—	C	QM1/118
8745	52P3277	PIPE, 4 WAY JOINT, FOR REFUELLING ... PIPES, INBOARD CENTRE ELEVATOR HINGE RIB, STARBOARD, GROUP	1	—	C	QM1/119
8744	53P3277	PIPE, 3-WAY, REDUCING JOINT, FOR REFUELLING PIPES BETWEEN RIBS 562.186 & 576.186, GROUP	1	—	C	QM1/120
20260	3P2850	Pipe, main fuel, No. 3 tank, top run from u/c rib to joint between ribs 422.186 and 436.186, 1-1/2" o/d x 20G x 7' 3" long approx.	1	L56	C	QM1/121
20261	4P2850	Pipe, main fuel, No. 4 tank, top run from u/c rib to joint between ribs 422.186 and 436.186, 1-1/2" o/d x 20G x 7' 3" long approx.	1	L56	C	QM1/122
	5P2850	Pipe, main fuel, No. 5 tank, bottom run from u/c rib to joint between ribs 422.186 and 436.186, 1-1/2" o/d x 20G x 7' 3" long approx.	1	L56		QM1/123
20262	6P2850	Pipe, main fuel, No. 6 tank, bottom run from u/c rib to joint between ribs 422.186 and 436.186, 1-1/2" o/d x 20G x 7' 3" long approx.	1	L56	C	QM1/124
	7P2850	Pipe, main fuel, No. 1 tank, bottom run from u/c rib to joint between ribs 422.186 and 436.186, 1-1/2" o/d x 20G x 7' 3" long approx.	1	L56		QM1/125
	10P2850	Pipe, main fuel, No. 7 tank, from joint between ribs 422.156 and 436.186 to joint between ribs 562.186 and 576.186, 1-1/2" o/d x 20G x 12' 3" long approx.	1	L56		QM1/126
	11P2850	Pipe, main fuel, No. 7 tank, from joint between ribs 422.186 and 436.186 to joint between ribs 562.186 and 576.186, 1-1/2" o/d x 20G x 12' 3" long approx.	1	—	MR	QM1/127
6669	6P3290	PIPE, FLEXIBLE, MAIN FUEL, FROM JOINT BETWEEN RIBS 562.186 AND 576.186, TO JOINT BETWEEN RIBS 600.436 AND ELEVATOR HINGE RIB, 1-1/2" BORE, GROUP (Pre-Mod. 2310)	1	Flylex	C	
1505444	1P4006	PIPE, FLEXIBLE, MAIN FUEL, FROM JOINT BETWEEN RIBS 562.186 AND 576.186, TO JOINT BETWEEN RIBS 600.436 AND ELEVATOR HINGE RIB, 1-1/2" BORE x 3' 6.67" LONG (Mod. 2310) (Ref. DUNLOP PART No. AHO.73150)	1	—	C	QM1/127A

VULCAN No. 2

SERVICES  
FUEL SYSTEM  
IN MAIN PLANE

Page QM. 9

Ref. No.	Part No.	Description	No. off	Matl. Spec.	Cl. of St.	Plate and Illust'n No.
					M.R.	
		1 2 3 4				
	31P2850	PIPE, REFUELLING CONNECTION, . . . . . FROM 3-WAY JOINT TO No. 7 TANK SUMP, 1-1/2" o/d x 20G x 10" LONG APPROX., PORT, GROUP	1	L56	MR	QM1/128
	18P3040	PIPE, REFUELLING CONNECTION, . . . . . FROM 3-WAY JOINT TO No. 7 TANK SUMP, 1-1/2" o/d x 20G x 10" LONG APPROX., STARBOARD, GROUP	1	L56	MR	QM1/129
	10P3620	PIPE, FLEXIBLE, REFUELLING, TO . . . . . 4-WAY JOINT BETWEEN RIBS 460.436 AND CENTRE ELEVATOR HINGE RIB, 2-1/2" BORE x 2'11" LONG, GROUP	1	Flylite	MR	QM1/130
	5P3620	PIPE, FLEXIBLE, REFUELLING, FROM . . . 4-WAY JOINT TO No. 3 TANK SUMP, 2" BORE x 2' 1-3/4" LONG, PORT, GROUP	1	Flylite	MR	QM1/131
	11P3630	PIPE, FLEXIBLE, TRANSFER, FROM . . . . . 3-WAY JOINT BETWEEN RIBS 562.186 AND 576.186 TO No. 7 TANK SUMP, 1-1/2" BORE x 4' 2-1/2" LONG, PORT, GROUP	1	Flylite		QM1/132
	12P3620	PIPE, FLEXIBLE, TRANSFER, FROM . . . . . 3-WAY, JOINT BETWEEN RIBS 562.186 AND 576.186, TO No. 7 TANK SUMP	1	Flylite	MR	QM1/133
17518	13P3620	PIPE, FLEXIBLE, REFUELLING, FROM . . . 3-WAY JOINT AT ELEVATOR AND AILERON HINGE RIB TO No. 5 TANK SUMP, 1-1/2" BORE x 2' 9-1/2" LONG, GROUP	1	Flylite	C	QM1/134
1510287	14P3620	PIPE, FLEXIBLE, MAIN FUEL, FROM . . . . . JOINT BETWEEN RIBS 562.186 AND 576.186 TO No. 5 TANK SUMP, 1-1/2" BORE x 3' 5.56" LONG, GROUP	1	Flylite		QM1/135
	4P2898	PIPE, FLEXIBLE, REFUELLING . . . . . BETWEEN No. 4 AND 6 TANK SUMP, 1-1/2" BORE x 4' 10-1/2" LONG, GROUP	1	-	MR	QM1/136
1537	7P2898	PIPE, FLEXIBLE, MAIN FUEL, FROM . . . . . JOINT, BETWEEN RIBS 422.186 AND 436.186 TO No. 6 TANK SUMP, 1-1/2" BORE x 8' 7-1/2" LONG, GROUP	1	-	C	QM1/137
	50P3277	Pipe, refuelling, joint, inboard of outboard u/c rib to joint between ribs 422.186 and 436.186, 2-1/4" o/d x 20G x 7' 0" long approx. (1st A/c only)	1	-		QM1/138

SERVICES  
FUEL SYSTEM  
IN MAIN PLANE

Ref. No.	Part No.	Description	No. off	Mati. Spec.	Cl. of St.	Plate and Illust'n No.
					M.R.	
		1 2 3 4				
	11P2898	PIPE, FLEXIBLE, REFUELLING, FROM ... 3-WAY JOINT BETWEEN RIBS 562.186 AND 576.186 TO 3-WAY JOINT AT ELEVATOR AND AILERON HINGE RIB, 1-1/2" BORE x 3' 0" LONG, GROUP	1	—	MR	QM1/139
	26P2898	PIPE, FLEXIBLE, MAIN FUEL, FROM ..... JOINT BETWEEN RIBS 562.186 AND 576.186 TO No. 7 TANK SUMP, 1-1/2" BORE x 5' 6-1/2" LONG, GROUP	1	—	MR	QM1/140
8647	102P2898	PIPE, FLEXIBLE, MAIN FUEL, FROM ..... JOINT BETWEEN RIBS 422.186 AND 436.186 TO No. 4 TANK SUMP, PORT, GROUP	1	—	C	QM1/141
2751	27P2898	PIPE, FLEXIBLE, MAIN FUEL, FROM ..... JOINT BETWEEN RIBS 422.186 AND 436.186 TO No. 4 TANK SUMP, STARBOARD, GROUP	1	—	C	QM1/142
8645	103P2898	PIPE, FLEXIBLE, MAIN FUEL, FROM ..... JOINT BETWEEN RIBS 422.186 AND 436.186 TO No. 3 TANK SUMP, PORT, GROUP	1	—	C	QM1/143
8646	104P2898	PIPE, FLEXIBLE, MAIN FUEL, FROM ..... JOINT BETWEEN RIBS 422.186 AND 436.186 TO No. 3 TANK SUMP, STARBOARD, GROUP	1	—	C	QM1/144
		RECUPERATOR AND FUEL PIPES IN INNER MAINPLANE, FORWARD OF FORWARD UNDERCARRIAGE BULK- HEAD, PORT AND STARBOARD (1 & 2P3291)				
		Spares for:—				
	102SS3553	Adaptor, for pipes .....	2	DTD423	C	QM4/145
	1SS3436	Adaptor, for pipe on fwd. u/c bulkhead ...	2	L40	MR	QM4/146
	104P2889	Adaptor, at non-return valve .....	2	DTD364B	MR	QM5/147
	8Z7364	CHAIN, RETAINING, BLANKING ..... CAP, GROUP (Length 4")	2	—	MR	QM4/148
	25/7SS4095	Clip, half, for 2" dia. pipe .....	2	—	MR	QM4/149
	15/SS1862	Clip, half, for 2" dia. pipe .....	2	—	C	QM4/150
	1/SS4471	Clip, half, for 3-1/2" dia. pipe .....	1	—	MR	QM4/151
	2/SS4471	Clip, half, for 3-1/2" dia. pipe .....	1	—	MR	QM4/151
	17/SS2868	Clip, pipe, 2" dia. ....	2	—		QM5/152
	27SS1768	Clip, for pipe .....	1	—		
	23/SS1768	Clip, for pipe .....	1	—		
26FP/13062	1SS3264	Clip, pipe .....	2	—	C	
26FP/13092	4SS3264	Clip, for pipe .....	2	—	C	
26FP/13924	14SS3264	Clip, for pipe .....	3	—	C	

VULCAN MR. 2

SERVICES  
FUEL SYSTEM  
IN MAIN PLANE

Page QM. 11

Ref. No.	Part No.	Description	No. off	Matl. Spec.	Cl. of St.	Plate and Illust'n No.
					M.R.	
		1 2 3 4				
		RECUPERATOR AND FUEL PIPES IN INNER MAIN PLANE, FORWARD OF FORWARD UNDERCARRIAGE BULKHEAD, PORT AND STARBOARD (1 & 2P3291) (Cont'd.)				
	3SS3405	Clip, for pipe .....	1	—	MR	QM5/153
	7SS4471	Clip, for pipe .....	1	—		QM4/154
	25SS4095	Clip, half .....	—	—		
	6SS3816	Clip, for pipe .....	2	—		
26FP/2453	1SS3859	Clip, for pipe .....	7	—	C	QM4/155
	4SS3859	Clip, for pipe .....	1	—		QM4/156
26FP/13421	14SS3859	Clip, for pipe .....	2	—	C	
	1SS3863	Clip, for pipe .....	28	—	MR	QM5/157
	2SS3863	Clip, for pipe .....	2	—		QM4/158
	FLIGHT REFUELLING					
27FR/1056583	FRS100/M	Coupling, pipe, 2" dia. ....	4	—	B	QM4/159
	57P3291	Coupling, pipe .....	2	—	MR	QM5/160
	HYMATIC LF7/4	Filter .....	2	—	A	QM5/161
	139SS6002	Label, Fuel "Recuperator Water Drains"	1	L59		QM4/162
		MOUNTING, RECUPERATOR, PORT AND STARBOARD (1 & 2P2888) Spares for:—				
	5P2888	STRAP, GROUP .....	4	—	MR	QM4/163
6935	3P3165	Pipe, fuel, 3-1/2" o/d x 18G port .....	1	—	C	QM4/164
	4P3165	Pipe, fuel, 3-1/2" o/d x 18G, starboard .....	1	—		QM4/165
	91P3291	PIPE, BRANCH, FROM BOTTOM JOINT OUTBOARD RIB, 162.5 TO NON-RETURN VALVE, 2" o/d x 18G PORT, GROUP	1	L54	MR	QM4/166
	90P3291	PIPE, BRANCH, FROM BOTTOM JOINT OUTBOARD RIB 162.5 TO NON-RETURN VALVE, 2" o/d x 18G, STARBOARD, GROUP	1	L54	MR	QM4/167
	5P329	Pipe, fuel, from aft fuel recuperator to ..... branch pipe, 2" o/d x 20G x 2' 11" long approx., port	1	L56	MR	QM4/168
	92P3291	Pipe, fuel, from aft fuel recuperator to ..... branch pipe, 2" o/d x 20G x 2' 11" long approx., starboard	1	L56	MR	QM4/169
	8P3291	Pipe, fuel, from forward fuel recuperator ..... to branch pipe, 2" o/d x 20G x 3' 0" long approx., starboard	1	L56	MR	QM4/170
	93P3291	Pipe, fuel, from forward fuel recuperator ..... to branch pipe, 2" o/d x 20G x 3' 0" long approx., port	1	L56	MR	QM4/171

SERVICES  
FUEL SYSTEM  
IN MAIN PLANE

Ref. No.	Part No.	Description	No. off	Matl. Spec.	Cl. of St.	Plate and Illust'n No.
					M.R.	
		1 2 3 4				
		RECUPERATOR AND FUEL PIPES IN INNER MAIN PLANE, FORWARD OF FORWARD UNDERCARRIAGE BULKHEAD, PORT AND STARBOARD (1 & 2P3291) (Cont'd.)				
	14P3291	PIPE, FROM FORWARD FUEL RECUPERATOR TO TEE-PIECE TOP, 1/4" o/d x 22G x 20" LONG APPROX., PORT, GROUP	1	L56	MR	QM4/172
20105	15P3291	PIPE, FROM FORWARD FUEL RECUPERATOR TO TEE-PIECE, TOP, 1/4" o/d x 22G x 20" LONG APPROX., STARBOARD, GROUP	1	L56	C	QM4/173
11449	16P3291	PIPE, FROM AFT FUEL RECUPERATOR TO TEE-PIECE, TOP, 1/4" o/d x 22G x 9" LONG APPROX., GROUP	1	L56	C	QM4/174
	20P3291	PIPE, DRAIN, FROM FORWARD FUEL RECUPERATOR TO TEE-PIECE, 3/16" o/d x 22G x 2' 3" LONG APPROX., STARBOARD, GROUP	1	L56	MR	QM4/175
20098	95P3291	PIPE, BRANCH, CENTRE, FROM JOINT OUTBOARD RIB 162.5 TO NON-RETURN VALVE, 2" o/d x 18G, PORT, GROUP	1	L54	C	QM4/176
11872	94P3291	PIPE, BRANCH, CENTRE, FROM JOINT OUTBOARD RIB 162.5 TO NON-RETURN VALVE, 2" o/d x 18G, STARBOARD, GROUP	1	L54	C	QM4/177
	24P3291	PIPE, FROM AFT FUEL RECUPERATOR TO TEE-PIECE, 3/16" o/d x 22G x 1' 8" LONG APPROX., STARBOARD, GROUP	1	L56	MR	QM4/178
	63P2889	PIPE, FROM TEE-PIECE TO JOINT OUTBOARD OF U/C HINGE RIB, 3/16" o/d x 22G x 6' 0" LONG, APPROX., PORT GROUP	1	L56	MR	QM4/179
	64P2889	PIPE, FROM TEE-PIECE TO JOINT OUTBOARD OF U/C HINGE RIB, 3/16" o/d x 22G x 7' 0" LONG APPROX., STARBOARD, GROUP (make from Pipe 30B/9611058 1 off, Collar 28F/8011890, 2 off Sleeve outer 28F/9128936, 2 off)	1	L56		QM4/180
	73P2889	PIPE, FROM JOINT OUTBOARD U/C HINGE RIB TO JOINT OUTBOARD RIB 162.5, 3/16" o/d x 22G x 3' 0" LONG APPROX., PORT, GROUP	1	L56		QM5/181

**SERVICES  
FUEL SYSTEM  
IN MAIN PLANE**

Ref. No.	Part No.	Description	No. off	Matl. Spec.	Cl. of St.	Plate and Illust'n No.
					M.R.	
		1 2 3 4				
		<b>RECUPERATOR AND FUEL PIPES IN INNER MAIN PLANE, FORWARD OF FORWARD UNDERCARRIAGE BULK- HEAD, PORT AND STARBOARD (1 &amp; 2P3291) (Cont'd)</b>				
	74P2889	PIPE, FROM JOINT OUTBOARD U/C HINGE RIB TO JOINT OUT- BOARD RIB 162-5, $\frac{3}{8}$ " o/d $\times$ 22G $\times$ 4' 0" LONG APPROX., STARBOARD, GROUP	1	L56		QM5/182
	75P2889	PIPE, FROM JOINT TO JOINT, ALONG OUTBOARD U/C RIB 162-5 $\frac{3}{8}$ " o/d $\times$ 22G $\times$ 4' 5" LONG APPROX., PORT, GROUP	1	L56		QM5/183
	76P2889	PIPE, FROM JOINT TO JOINT, ALONG OUTBOARD U/C RIB 162-5, $\frac{3}{8}$ " o/d $\times$ 22G $\times$ 4' 4" LONG APPROX., STARBOARD, GROUP	1	L56		QM5/184
	77P2889	PIPE, FROM JOINT OUTBOARD U/C RIB 162-5 TO JOINT INBOARD OF OUTBOARD U/C RIB 162-5, $\frac{3}{8}$ " o/d $\times$ 22G $\times$ 3' 5" LONG APPROX., PORT, GROUP	1	L56		QM5/185
	78P2889	PIPE, FROM JOINT OUTBOARD U/C RIB 162-5 TO JOINT INBOARD OF OUTBOARD U/C 162-5, $\frac{3}{8}$ " o/d $\times$ 22G $\times$ 3' 1" LONG APPROX., STBD., GROUP	1	L56		QM5/186
	79P2889	PIPE, FROM JOINT AT STRINGER 13 TO NON-RETURN VALVE AT No. 4 FUEL TANK SUMP, $\frac{3}{8}$ " o/d $\times$ 22G $\times$ 6' 5" LONG APPROX., STBD., GROUP	1	L56	MR	QM5/187
	80P2889	PIPE, FROM JOINT AT STRINGER 13 TO NON-RETURN VALVE AT No. 4 FUEL TANK SUMP, $\frac{3}{8}$ " o/d $\times$ 22G $\times$ 6' 5" LONG APPROX., STBD., GROUP	1	L56	MR	QM5/188
	81P2889	PIPE, FROM JOINT TO JOINT ALONG STRINGER 13, $\frac{3}{8}$ " o/d $\times$ 22G $\times$ 7' 3" LONG APPROX., PORT, GROUP	1	L56		QM5/189
	106P2889	PIPE, FROM JOINT TO JOINT ALONG STRINGER 13, $\frac{3}{8}$ " o/d $\times$ 22G $\times$ 7' 10" LONG APPROX., STBD., GROUP	1	L56		QM5/190
20109	137P3291	PIPE, RECUPERATOR DRAIN, $\frac{1}{2}$ " o/d $\times$ 20G $\times$ 12", PORT, BOTTOM, GRP. (Mod. 1200)	1	L56	C	QM4/191

**SERVICES  
FUEL SYSTEM  
IN MAIN PLANE**

Ref. No.	Part No.	Description	No. off	Matl. Spec.	Cl. of St.	Plate and Illust'n No.
					M.R.	
		1 2 3 4				
		<b>RECUPERATOR AND FUEL PIPES IN INNER MAIN PLANE, FORWARD OF FORWARD UNDERCARRIAGE BULK- HEAD, PORT AND STARBOARD (1 &amp; 2P3291) (Cont'd)</b>				
	140P3291	PIPE, RECUPERATOR DRAIN, $\frac{1}{8}$ " o/d × 20G × 24", PORT, TOP, GROUP (Mod. 1200)	1	—	MR	QM4/192
20110	138P3291	PIPE, RECUPERATOR DRAIN, $\frac{1}{8}$ " o/d × 20G × 12", STBD., BOTTOM, GRP. (Mod. 1200)	1	—	C	QM4/193
20112	139P3291	PIPE, RECUPERATOR DRAIN, $\frac{1}{8}$ " o/d × 20G × 24", STBD., TOP, GROUP (Mod. 1200)	1	—	C	QM4/194
	60P3291	Pipe, outlet through btm skin ... ..	1	—		QM4/195
	123P3291	PIPE, VENT TO OUTLET PIPE, BOTTOM SKIN, $\frac{3}{8}$ " o/d × 22G × 12", PORT, GROUP (Mod. 1018)	—	—	MR	QM5/196
	124P3291	PIPE, VENT TO OUTLET PIPE, BOTTOM SKIN, $\frac{3}{8}$ " o/d × 22G × 12", STARBOARD, GROUP (Mod. 1018)	1	—	MR	QM5/197
	136P3291	PIPE, TO FORWARD RECUPERA- TOR, $\frac{3}{8}$ " o/d × 22G × 40", PORT, GRP.	1	—	MR	QM4/198
	135P3291	PIPE, TO AFT RECUPERATOR, $\frac{3}{8}$ " o/d × 22G × 36", PORT, GROUP	1	—	MR	QM4/199
	120P3291	PIPE, TO FORWARD RECUPERA- TOR $\frac{3}{8}$ " o/d × 22G × 40", STBD., GROUP (Mod. 1018)	1	—	MR	QM4/200
	122P3291	PIPE, TO AFT RECUPERATOR, $\frac{3}{8}$ " o/d 22G × 36", STBD., GROUP (Mod. 1018)	1	—	MR	QM4/201
11303	127P3291	PIPE, FROM AIR-NO FUEL VALVE TO RELIEF VALVE, AFT RECUPERATOR, PORT, GROUP (Mod. 1018)	1	—	C	QM5/203
11304	128P3291	PIPE, FROM AIR-NO FUEL VALVE TO RELIEF VALVE, AFT RECUPERATOR, STARBOARD, GROUP (Mod. 1018)	1	—	C	QM5/204
10972	115P3291	PIPE, FROM AIR-NO FUEL VALVE TO RELIEF VALVE, FWD RECUPERA- TOR, PORT, GROUP (Mod. 1018)	1	—	C	QM5/205

SERVICES  
FUEL SYSTEM  
IN MAIN PLANE

Ref. No.	Part No.	Description	No. off	Matl. Spec.	Cl. of St.	Plate and Illust'n No.
					M.R.	
		1 2 3 4				
		RECUPERATOR AND FUEL PIPES IN INNER MAIN PLANE, FORWARD OF FORWARD UNDERCARRIAGE BULKHEAD, PORT AND STARBOARD (1 & 2P3291) (Cont'd)				
	116P3291	PIPE, FROM AIR-NO FUEL VALVE TO . . . RELIEF VALVE, FORWARD RECUPERATOR, STARBOARD, GROUP (Mod. 1018)	1	—	MR	QM5/206
	113P3291	PIPE, FROM RELIEF VALVE TO . . . . . BULKHEAD ADAPTOR, AFT RECUPERATOR, GROUP (Mod. 1108)	1	—	MR	QM5/107
	114P3291	PIPE, FROM RELIEF VALVE TO . . . . . BULKHEAD, ADAPTOR, AFT RECUPERATOR, STARBOARD, GROUP (Mod. 1018)	1	—	MR	QM5/208
	111P3291	PIPE, FROM RELIEF VALVE TO . . . . . BULKHEAD ADAPTOR, FORWARD RECUPERATOR, PORT, GROUP (Mod. 1018)	1	—	MR	QM5/209
	112P3291	PIPE, FROM RELIEF VALVE TO . . . . . BULKHEAD ADAPTOR, FORWARD RECUPERATOR, STARBOARD, GROUP (Mod. 1018)	1	—	MR	QM5/210
	109P3291	PIPE, FROM BULKHEAD ADAPTOR TO . . . FILTER, AFT RECUPERATOR, PORT, GROUP (Mod. 1018)	1	—	MR	QM5/211
	110P3291	PIPE, FROM BULKHEAD ADAPTOR TO . . . FILTER, AFT RECUPERATOR, STARBOARD, GROUP (Mod. 1018)	1	—	MR	QM5/212
	107P3291	PIPE, FROM BULKHEAD ADAPTOR TO . . . FILTER, FORWARD RECUPERATOR, PORT, GROUP (Mod. 1018)	1	—	MR	QM5/213
	108P3291	PIPE, FROM BULKHEAD ADAPTOR TO . . . FILTER, FORWARD RECUPERATOR, STARBOARD, GROUP (Mod. 1018)	1	—	MR	QM5/214
	105P3291	PIPE, TO SAUNDERS N.R. VALVE, AFT . . RECUPERATOR, PORT, GROUP (Mod. 1018)	1	—	MR	QM5/215
	106P3291	PIPE, TO SAUNDERS N.R. VALVE, AFT . . RECUPERATOR, STARBOARD, GROUP (Mod. 1018)	1	—	MR	QM5/216
	103P3291	PIPE, TO SAUNDERS N.R. VALVE, . . . . . FORWARD RECUPERATOR, PORT, GROUP (Mod. 1018)	1	—	MR	QM5/217
10961	104P3291	PIPE, TO SAUNDERS N.R. VALVE, . . . . . FORWARD RECUPERATOR, STARBOARD, GROUP (Mod. 1018)	1	—	C	QM5/218

SERVICES  
FUEL SYSTEM  
IN MAIN PLANE

Ref. No.	Part No.	Description	No. off	Matl. Spec.	Cl. of St.	Plate and Illust'n No.
					M.R.	
		1 2 3 4				
		RECUPERATOR AND FUEL PIPES IN INNER MAIN PLANE, FORWARD OF FORWARD UNDERCARRIAGE BULKHEAD, PORT AND STARBOARD (1 & 2P3291) (Cont'd)				
	78P3291	PIPE, FROM TEE-PIECE TO DRAIN . . . . . OUTLET, FORWARD, 3/16" o/d x 22G, STARBOARD, GROUP	1	—	MR	QM4/219
	75P3291	PIPE, FROM TEE-PIECE TO DRAIN . . . . . OUTLET, FORWARD, 3/16" o/d x 22G, PORT, GROUP	1	—	MR	QM4/220
	76P3291	PIPE, FROM TEE-PIECE TO BOTTLES, . . . 3/16" o/d x 22G, PORT, GROUP	1	—	MR	QM4/221
27F/4526767	SELF PRIMING ENGINEERING PRC.60B Mk. 1	Recuperator . . . . .	2	—		QM4/222
	AGS1186C	Seal . . . . .	1	—		QM5/225b
	48SS3557	Tee-piece (alternative 74SS3557) . . . . .	1	—	MR	QM4/223
	128SS3557	Tee-piece, special, 1/2" x 3/8" x 1/2" BSP . .	2	S110	MR	
27VB/4427298	HYMATIC P60/28 Mk. 2	Valve, relief . . . . .	2	—		QM5/225
27F/2251	VICKERS A5179/M	Valve, non-return, 2" BSP . . . . .	2	—		QM4/226
	VICKERS A5287/M	Valve, non-return (alternative to be used) . . when stocks of A5179/M are exhausted)	2	—		QM4/227
27FS/5364	SAUNDERS 704/AA02B	Valve, non-return . . . . .	2	—	A	QM5/228
12082	1P3699	VALVE, AIR-NO FUEL, GROUP . . . . . (Mod. 1018)	2	—	A	QM5/229
		TANK, WING, No. 3, PORT AND STARBOARD (1 & 2P2827) Spares for:—				
6A/4333669	SMITH WAYMOUTH JM3	Box, tank terminal . . . . .	1	—	A	QM6/230
6A/4333583	SMITH WAYMOUTH PE/T/92/T	Connector, internal . . . . .	1	—	B	QM6/231
6A/4066	SMITH WAYMOUTH PL/T/88/T	Connector, internal . . . . .	1	—	B	QM6/232
6A/4333578	SMITH WAYMOUTH PE/T/20/Z	Connector, internal . . . . .	1	—	B	QM6/233
6A/4333676	SMITH WAYMOUTH PL/T/18/Z	Connector, internal . . . . .	1	—	B	QM6/234
	20P2827	Hose, drain outlet, 5/16" i/d x 4" long, . . . . port	1	DTD625A		QM6/235
	21P2827	Hose, drain outlet, 5/16" o/d x 17G, . . . . . starboard	1	L54		QM6/236

SERVICES  
FUEL SYSTEM  
IN MAIN PLANE

Ref. No.	Part No.	Description	No. off	Matl. Spec.	Cl. of St.	Plate and Illust'n No.
					M.R.	
		TANK, WING No. 3, PORT AND STARBOARD (1 & 2P2827) (Cont'd.)				
		RESERVOIR AND FUEL, PUMP, PORT AND STARBOARD (1 & 2P3372)				
		Spares for:—				
28E/16521	AGS1000/0	Clip, "S", type .....	6	—	C	QM6/237
	75P3127	Clip, pipe, 5/8" dia. ....	15	L72	MR	QM6/238
	86P3127	Clip, 2" dia. ....	1	—		QM6/239
	FIREPROOF TANKS LTD.					
	FT1826	Clip, attachment of pipe to tank .....	16	—	MR	QM6/240
	66P3127	Hose, 5/8" i/d x 2" long .....	3	DTD625A		QM6/241
	69P3127	Packing, for attachment pipes to tank, 1/16" x 3-3/4" x 1-1/4" .....	—	—		QM6/242
2616	50P3127	Pipe, fuel, from reservoir to joint, 5/8" x 22G x 4' 4" long approx., port .....	1	L56	C	QM6/243
	51P3127	Pipe, fuel, from reservoir to joint, 5/8" o/d x 22G x 4' 4" long approx., starboard .....	1	L56	MR	QM6/244
	60P3127	Pipe, fuel, between joints, 5/8" o/d x 22G x 3' 6" long .....	1	L56	MR	QM6/245
7969	29P3272	Pipe, from joint to fuel pump, 5/8" o/d x 22G, port .....	1	L56	C	QM6/246
7970	30P3272	Pipe, from joint to fuel pump, 5/8" o/d x 22G, starboard .....	1	L56	C	QM6/247
		PUMP, FUEL, AND FUEL LEVEL SWITCH, PORT AND STARBOARD (13 & 14P3272)				
		Spares for:—				
	8351V1800	Cable, port .....	1	—		QM6/248
	8358V8101	Cable, starboard .....	1	—		QM6/249
	40P3272	Gasket .....	1	—	MR	QM6/250
	12P3272	Hose, 3/8" i/d x 2" long .....	1	DTD125A		QM6/251
12201	3P3600	MOUNTING, PUMP AND SWITCH, SUPPORT, PORT, GROUP .....	—	M12	C	QM6/252
	2P3600	MOUNTING, PUMP, AND SWITCH, SUPPORT, STARBOARD, GROUP .....	—	—	MR	QM6/253
5UE/6850	PULSOMETER PAC100 Mk. 3	Pump, fuel (Mod. 785) .....	1	—	A	QM6/254
	FLIGHT REFUELLING					
5CW/4405246	C3510100/1	Switch, float (Mod. 1043) .....	1	—	A	QM6/255
9005	11P3125	RESERVOIR, FUEL TANK, THREE TIER, PORT, GROUP .....	1	—	B	QM6/256
9006	12P3125	RESERVOIR, FUEL TANK, THREE TIER, STARBOARD, GROUP .....	1	—	B	QM6/257
		Spares for:—				
	FIREPROOF TANKS LTD.					
	FT4609	Gasket .....	2	—	MR	QM6/258
28FP/9429531	DZUS LTD. S4/225	Spring .....	3	—	C	QM6/259



VULCAN Mk. 2

SERVICES  
FUEL SYSTEM  
IN MAIN PLANE

Page QM. 19

Ref. No.	Part No.	Description	No. off	Mati. Spec.	Cl. of St.	Plate and Illust'n No.
					M.R.	
		1 2 3 4				
		SUMP, No. 3 TANK, PORT AND STARBOARD (1 & 2P3474) (Cont'd.)				
	13P2841	PLATE, SUMP, PORT, GROUP .....	1	—	MR	QM6/277
	14P2841	PLATE, SUMP, STARBOARD, GROUP .....	1	—	MR	QM6/278
		Spares for:—				
13438	3P2839	Stud, 2 BA .....	34	S94, 95, 96	MR	
	20P2841	Stud, 2 BA .....	12	S94, 95, 96	C	
5UE/4412045	PULSOMETER P1-C1200 Mk.4	Pump, fuel (Mod. 1572) .....	1	—	A	QM6/279
	FLIGHT REFUELLING C1140103 Mk.40	Valve, refuelling, port (Alternative C1140003) (27FR4311) .....	1	—		QM6/280
	FLIGHT REFUELLING C1140104 Mk.40	Valve, refuelling, starboard (Alternative C1140004) (27R/4312) .....	1	—		QM6/281
	8P2844	Washer, sealing, outlet, elbow .....	2	DTD762	MR	QM6/282
	16P2841	Washer, sealing, drain, cock .....	1	DTD762	MR	QM6/283
	16P2844	Washer, sealing, refuelling valve .....	2	DTD762	MR	QM6/284
	11P2831	STOP, VENT VALVE, GROUP .....	1	—	MR	QM6/299
110	1P3249	TANK, FUEL, No. 3, PORT, GROUP .....	1	—	A	QM6/285
111	2P3249	TANK, FUEL, No. 3, STARBOARD .....	1	—	A	QM6/286
	(See:—Tanks, Fuel)					
6A/4333560	SMITH & SONS TM2 Mod. 01	Unit, tank .....	1	—	A	QM6/287
6A/4333561	SMITH SONS TM3 Mod. 01	Unit, tank .....	1	—	A	QM6/288
	15P3012	VALVE, FLOAT, GROUP (Mod. 1356) .....	1	—	MR	QM6/289
		Spares for:—				
	2P3012	Body, valve .....	1	L59	MR	QM6/290
	4P3012	Float, cork .....	1	—	MR	QM6/291
	7P3012	Housing, spring .....	1	L59	MR	QM6/292
	9P3012	Housing, valve .....	1	L59	MR	QM6/293
1433911	12P3012	Packing, 1/32" thick x 2-3/16" dia. ....	1	—		QM6/294
	14P3012	Plate, retaining .....	1	L59	MR	QM6/295
	3P3012	Sleeve, float .....	1	L59	MR	QM6/296
	6P3012	Spring, valve, inward .....	1	—	MR	QM6/297
	13P3012	Spring, valve, outward .....	1	—	MR	QM6/298
		TANK, WING, No. 4, PORT AND STARBOARD (1 & 2P2828)				
		Spares for:—				
6A/4333669	SMITH WAYMOUTH JM3	Box, tank, terminal .....	1	—	A	QM7/300
6A/4333582	SMITH WAYMOUTH PE/T/84/T	Connector, internal .....	1	—	B	QM7/301
6A/4333575	SMITH WAYMOUTH PE/T/80/T	Connector, internal .....	1	—	B	QM7/302

**SERVICES  
FUEL SYSTEM  
IN MAIN PLANE**

Ref. No.	Part No.	Description	No. off	Matl. Spec.	Cl. of St.	Plate and illust'n No.	
					M.R.		
		1 2 3 4					
		<b>TANK, WING No. 4, PORT AND STARBOARD (1 &amp; 2P2828) (Cont'd.)</b>					
6A/4333578	SMITH WAYMOUTH PE/T/20/Z	Connector, internal .....	1	—	B	QM7/303	
6A/4333676	SMITH WAYMOUTH PL/T/18/Z	Connector, internal .....	1	—	B	QM7/304	
	20P2827	Hose, drain, outlet, 3/16" i/d x 4" long .....	1	DTD625A		QM7/305	
		<b>RESERVOIR AND PUMP, PORT AND STARBOARD (3 &amp; 4P3272)</b>					
		Spares for:—					
17692	75P3127	Clip, pipe, 5/8" dia. ....	15	L72	MR	QM7/306	
	86P3127	Clip, pipe, 2" dia. ....	1	L72	C	QM7/307	
	FIREPROOF TANKS LTD. FT1826	Clip, attachment of pipe to tank .....	16	—	MR	QM7/308	
	66P3127	Hose, 5/8" i/d x 2" long .....	3	DTD623A		QM7/309	
11531	69P3127	Packing, attachment pipes to tank, .....	8	GACO	C	QM7/310	
	52P3127	Pipe, fuel, from reservoir to joint, .....	1	L56	MR	QM7/311	
		5/8" o/d x 22G x 3' 5" long approx., port					
	53P3127	Pipe, fuel, from reservoir to joint .....	1	L56	MR	QM7/312	
		5/8" o/d x 22G x 3' 5" long approx., starboard					
7980	61P3127	Pipe, fuel, between joints, 3/8" o/d x .....	1	L56	C	QM7/313	
		22G x 4' 4" long approx.					
7971	31P3272	Pipe, fuel, from joint to fuel pump, .....	1	L56	C	QM7/314	
		5/8" o/d x 22G x 4' 6" long approx., port					
7972	32P3272	Pipe, fuel, from joint to fuel pump, .....	1	L56	C	QM7/315	
		5/8" o/d x 22G x 4' 6" long approx., starboard					
		<b>PUMP, FUEL AND FUEL LEVER SWITCH, PORT AND STARBOARD (15 &amp; 16P3272)</b>					
		Spares for:—					
	8354V8100	Cable, port .....	1	—		QM7/316	
	8362V8101	Cable, starboard .....	1	—		QM7/317	
	40P3272	Gasket .....	1	—	MR	QM7/318	
	12P3272	Hose, 3/8" i/d x 2" long .....	1	DTD625A		QM7/319	
	5P3600	MOUNTING, PUMP AND SWITCH .....	1	—		QM7/320	
		SUPPORT, PORT, GROUP					
12202	4P3600	MOUNTING, PUMP AND SWITCH .....	1	—	C	QM7/321	
		SUPPORT, STARBOARD, GROUP					
5UE/6850	PULSOMETER ENG. Co. PAC100 Mk.3 FLIGHT REFUELLING C3510100/1	Pump, fuel (Mod. 785) .....	1	—	A	QM7/322	
		Switch, float (Mod. 1043) .....	1	—		QM7/323	

SERVICES  
FUEL SYSTEM  
IN MAIN PLANE

Ref. No.	Part No.	Description				No. off	Matl. Spec.	Cl. of St.	Plate and Illust'n No.
		1	2	3	4			M.R.	
		RESERVOIR AND PUMP, PORT AND STARBOARD (3 & 4P3272) (Cont'd.)							
9005	11P3125					—	—	B	QM7/324
9006	12P3125					—	—	B	QM7/325
	FIREPROOF TANKS LTD. FT4609 DZUS LTD. S4/225					Spares for:—			
28FP/9429531						2	—	MR	QM7/326
						3	—	C	QM7/327
22205	1P3146 2P3146					1	—	C	QM7/328
						1	—		QM7/329
22204	19P3125					—	—	C	
	18P3125					1	—	MR	QM7/331
8774	21P3125					1	—	B	QM7/332
8775	22P3125					1	—	B	QM7/333
	1P3119					3	—	MR	QM7/334
						Attachments—Reservoir Tiers Part Nos. 1 & 2P3146, 18, 19, 21 & 22P3125			
28D/9133011	A25/2C					58	—	C	
28W/9419402	SP13/C					58	—	C	
	FIREPROOF TANKS FT3626/S/39/12					1	—	MR	QM7/335
27FR/3473	FLIGHT REFUELLING B3504371					1	—	C	QM7/336
27FR/3474	FLIGHT REFUELLING B3504372					1	—	C	QM7/337
						SUMP, No. 4 TANK, PORT AND STARBOARD (1 & 2P3475)			
						Spares for:—			
	103/SS3553					1	—	MR	QM7/338
	4P3480					—	—	MR	QM7/339
	3P3480					—	—	MR	QM7/340

SERVICES  
FUEL SYSTEM  
IN MAIN PLANE

Ref. No.	Part No.	Description	No. off	Mati. Spec.	Cl. of St.	Plate and Illust'n No.
					M.R.	
		1 2 3 4				
		SUMP, No. 4 TANK, PORT AND STARBOARD (1 & 2P3475) (Cont'd.)				
	1P2937	INHIBITOR, FUEL TANK, GROUP .....	—	—		QM7/341
		Spares for:—				
	AUTOMATIVE ENG. C0. 5/16" BORE VICKERS ARMSTRONG A5269 Mk.A	Clip, Seeger (internal type) .....	1	—		QM7/342
27F/4526669	4P2937	Cock, drain, 1/4" BSP .....	1	—	A	QM7/343
	2P2937	Cover .....	1	L72	MR	QM7/344
	3P2937	Housing .....	1	DTD259A		QM7/345
	5P2937	Spider .....	1	L16	MR	QM7/346
		Bag, chromate salts .....	1	—	MR	
	3P2842	PLATE, SUMP, PORT, GROUP .....	1	—	MR	QM7/347
	4P2842	PLATE, SUMP, STBD., GROUP .....	1	—	MR	QM7/348
		Spares for:—				
13438	3P2839	Stud, 2 BA .....	34	S94, 95, 96	MR	
	20P2841	Stud, 2 BA .....	12	S94, 95, 96	C	
	PULSOMETER ENG. Co. PAC1200 Mk.4	Pump, fuel (Mod. 1572) .....	1	—	A	QM7/349
5E/4412045	FLIGHT REFUELLING C1140105 Mk.10	Valve, refuelling .....	1	—	A	QM7/350
		(Alternative C1140005)				
	SAUNDERS VALVE	Valve, non-return .....	1	—	A	QM7/351
27FS/4524637	6270B	Washer, sealing, outlet valve .....	2	DTD762	MR	QM7/352
	8P2844	Washer, sealing, refuelling valve .....	2	DTD762	MR	QM7/353
	16P2844	Washer, jointing .....	1	L17	MR	QM7/354
	1/SS4087					
	11P2831	STOP, VENT VALVE, GROUP .....	1	—	MR	QM7/354A
112	1P3250	TANK, FUEL, No. 4, PORT, GROUP .....	1	—	A	QM7/355
113	2P3250	TANK, FUEL, No. 4, STBD., GROUP .....	1	—		QM7/356
		(See:— Tanks, fuel)				
6A/4333562	SMITH & SONS TM4 Mod. 01	Unit, tank .....	1	—	A	QM7/357
6A/4333563	SMITH & SONS TM5 Mod. 01	Unit, tank .....	1	—	A	QM7/358
	15P3012	VALVE, FLOAT, GROUP (Mod. 1356) .....	1	—	MR	QM7/359
		Spares for:—				
	2P3012	Body, valve .....	1	L59	MR	QM7/360
	4P3012	Float, cork .....	1	—	MR	QM7/361
	7P3012	Housing, spring .....	1	L59	MR	QM7/362
	9P3012	Housing, valve .....	1	L59	MR	QM7/363
	14P3012	Plate, retaining .....	1	L59	MR	QM7/364
	3P3012	Sleeve, float .....	1	L59	MR	QM7/365
	6P3012	Spring, valve, inward .....	1	—	MR	QM7/366
	13P3012	Spring, valve, outboard .....	1	—	MR	QM7/367
1433911	12P3012	Packing, 1/32" thick x 2-3/16" dia. ....	1	—	C	QM7/367A

SERVICES  
FUEL SYSTEM  
IN MAIN PLANE

Ref. No.	Part No.	Description	No. off	Matl. Spec.	Cl. of	Plate and Illust'n No.
					St. M.R.	
		1 2 3 4				
		TANK, WING, No. 5, PORT AND STARBOARD (1 & 2P2839)				
6A/4333669	SMITH WAYMOUTH JM3	Box, tank, terminal .....	1	—	A	QM8/368
6A/4333583	SMITH WAYMOUTH PE/T/92/T	Connector, internal .....	1	—	B	QM8/369
6A/4066	SMITH WAYMOUTH PL/T/88/T	Connector, internal .....	1	—	B	QM8/370
6A/4076	SMITH WAYMOUTH PE/T/24/Z	Connector, internal .....	1	—	B	QM8/371
	SMITH WAYMOUTH PL/T/22/Z	Connector, internal .....	1	—	B	QM8/372
	20P2827	Hose, drain, outlet, 3/16" i/d x 4" long ....	1	DTD625A		QM8/373
		RESERVOIR AND FUEL PUMP PORT AND STBD. (5 & 6P3272)				
		Spares for:—				
17692	75P3127	Clip, pipe, 5/8" dia. ....	15	L72	MR	QM8/374
	86P3127	Clip, pipe, 2" dia. ....	1	L72	C	QM8/375
	FIREPROOF TANKS LTD. FT1826	Clip, attachment of pipes to tank .....	16	—	MR	QM8/376
11531	66P3127	Hose, 5/8" i/d x 2" long .....	3	DTD625A		QM8/377
	69P3127	Packing, for attachment of pipes to tanks, 1/16" x 3-3/4" x 1-1/4" .....	8	GACO	C	QM8/378
	54P3127	PIPE, fuse, from reservoir to joint, 5/8" o/d x 22G x 3' 6" long approx., port .....	1	L56	MR	QM8/379
	55P3127	Pipe, fuel, from reservoir to joint, 5/8" o/d x 22G x 3' 6" long approx., starboard .....	—	L56	MR	QM8/380
7981	62P3127	Pipe, fuel, from joint to joint, 5/8" o/d x 22G x 4' 5" long approx. ....	1	L56	C	QM8/381
7973	33P3272	Pipe, fuse, from joint to fuel pump, 5" o/d x 22G x 5' 0" long approx., port .....	1	L56	C	QM8/382
7974	34P3272	Pipe, fuel, from joint to fuel pump, 5/8" o/d x 22G x 5' 0" long approx., starboard .....	1	L56	C	QM8/383
		PUMP, FUEL AND FUEL LEVER SWITCH, PORT & STARBOARD (17 & 18P3272)				
		Spares for:—				
	8352V8100	Cable .....	1	—		QM8/384
	8359V8101	Cable .....	1	—		QM8/385
	40P3272	Gasket .....	1	—	MR	QM8/386
	7P3600	MOUNTING, PUMP AND SWITCH SUPPORT, PORT, GROUP .....	1	—	MR	QM8/387
	6P3600	MOUNTING, PUMP AND SWITCH SUPPORT, STARBOARD, GROUP .....	1	—	MR	QM8/388

SERVICES  
FUEL SYSTEM  
IN MAIN PLANE

Ref. No.	Part No.	Description	No. off	Matl. Spec.	Cl. of St.	Plate and Illust'n No.
					M.R.	
		1 2 3 4				
		PUMP, FUEL AND FUEL LEVEL SWITCH, PORT AND STARBOARD (17718P3272) (Cont'd)				
5UE/6850	PULSOMETER ENG. Co. PAC100 Mk. 3 FLIGHT REFUELLING	Pump, fuel (Mod. 785) .....	1	—	A	QM8/389
5CW/4405246	C3510100/1	Switch, float .....	1	—	A	QM8/390
	28P3125	RESERVOIR, FUEL TANK, TWO TIER, PORT, GROUP .....	1	—		QM8/391
	29P3125	RESERVOIR, FUEL TANK, TWO TIER, STARBOARD, GROUP .....	1	—		QM8/392
		Spares for:—				
	FIREPROOF TANKS FT4602 DZUS	Gasket .....	1	—	MR	QM8/393
28FP/9429531	S4/225	Spring .....	3	—	C	QM8/394
	10P3125	SUPPORT, PIPE, GROUP .....	1	—		QM8/395
		Spares for:—				
28FP/4070037	DZUS AW4/20	Fastener .....	3	—	C	
22205	1P3146	TIER, RESERVOIR, TOP, PORT, GROUP .....	1	—	C	QM8/396
	2P3146	TIER, RESERVOIR, TOP, STBD., GROUP .....	—	—		QM8/397
22206	30P3125	TIER, RESERVOIR, BOTTOM, PORT, GROUP .....	1	—	B	QM8/398
22207	32P3125	TIER, RESERVOIR, BOTTOM, STARBOARD, GROUP .....	1	—	B	QM8/399
		Spares for:—				
	1P3119	VALVE, FLAP, GROUP .....	1	—	MR	QM8/400
		Attachments — Reservoir Tiers Part Nos. 1 & 2P3146, 30 & 32P3125				
28D/9436920	A25/2C	Bolt, 2 BA .....	29	—	C	
28W/9419402	SP13/C	Washer, 2 BA .....	29	—	C	
	FIREPROOF TANKS FT3626/S/39/12 FLIGHT REFUELLING	Ring bolt, "D" .....	1	—	MR	QM8/401
27FR/ 4692826	B3504377	Steady, fuel level switch, port .....	1	—	C	QM8/402
27FR/3474	B3504372	Steady, fuse level switch, starboard .....	1	—	C	QM8/403
		SUMP, No. 5 TANK, PORT AND STARBOARD (1 & 2P2P3476)				
		Spares for:—				
10156	17P2841	Adaptor, for inhibitor and drain cock .....	1	L65	C	QM8/404
	3P3476	Elbow, outlet pipe, 1-1/2" BSP, port .....	1	—	MR	QM8/405
	2P3472	Elbow, outlet pipe, 1-1/2" BSP, stbd. ....	1	L33	MR	QM8/406

VULCAN Mk. 2

SERVICES  
FUEL SYSTEM  
IN MAIN PLANE

Page QM. 25

Ref. No.	Part No.	Description	No. off	Matl. Spec.	Cl. of St.	Plate and Illust'n No.
					M.R.	
		1 2 3 4				
		SUMP, No. 5 TANK, PORT AND STARBOARD (1 & 2P3476) (Cont'd.)				
	1P2937	INHIBITOR, FUEL TANK, GROUP .....	1	—		QM8/407
		Spares for:—				
	AUTOMATIVE ENG. CO. 5/16" BORE VICKERS ARMSTRONG A5269 Mk.A	Clip, Seeger (internal type) .....	1	—	C	QM8/408
27F/4526669	4P2937	Cock, drain, 1/4" BSP .....	1	—	A	QM8/409
	2P2937	Cover .....	1	L72	MR	QM8/410
	3P2937	Housing .....	1	DTD259A		QM8/411
	5P2937	Spider .....	1	L16	MR	QM8/412
		Bag, chromate salts .....	1	—	MR	
	6P3476	Packing, for refuelling valve .....	1	L56	MR	QM8/413
	5P3476	PLATE, SUMP, PORT, GROUP .....	1	—	MR	QM8/414
	4P3476	PLATE, SUMP, STBD., GROUP .....	1	—	MR	QM8/415
		Spares for:—				
	3P2839	Stud, 2 BA .....	34	S94, 95, 96	MR	
	7P3476	Stud, 2 BA .....	12	S94, 95, 96	MR	
	PULSOMETER ENG. CO. PAC1200 Mk.4	Pump, fuel (Mod. 1572) .....	1	—	A	QM8/416
5UE/4412045	FLIGHT REFUELLING C1140103	Valve, refuelling, port .....	1	—	A	QM8/417
		(Alternative C1140003) (2FR/4311)				
	FLIGHT REFUELLING C1140104	Valve, refuelling, starboard .....	1	—	A	QM8/418
		(Alternative C1140004) (27FR/4312)				
	1/SS4087	Washer, jointing .....	1	L17	MR	QM8/419
	16P2844	Washer, sealing, refuelling valve .....	2	DTD762	MR	QM8/420
	16P2841	Washer, sealing, drain cock .....	1	DTD762	MR	QM8/421
	8P2844	Washer, sealing, outlet elbow .....	2	DTD762	MR	QM8/422
	11P2831	STOP, VENT VALVE, GROUP .....	1	—	MR	QM8/422A
114	1P3251	TANK, FUEL, No. 5, PORT, GROUP .....	1	—	A	QM8/423
	2P3251	TANK, FUEL, No. 5, STBD., GROUP .....	1	—		QM8/424
		(See:— Tanks, fuel)				
6A/4333564	SMITH & SONS TM6. Mod.01	Unit, tank .....	1	—	A	QM8/425
6A/4333565	SMITH & SONS TM7. Mod.01	Unit, tank .....	1	—	A	QM8/426
	15P3012	VALVE, FLOAT, GROUP (Mod. 1356) .....	1	—	MR	QM8/427
		Spares for:—				
	2P3012	Body, valve .....	1	L59	MR	QM8/428
	4P3012	Float, cork .....	1	—	MR	QM8/429
	7P3012	Housing, spring .....	1	L59	MR	QM8/430
	9P3012	Housing, valve .....	1	L59	MR	QM8/431
	14P3012	Plate, retaining .....	1	L59	MR	QM8/432
	3P3012	Sleeve, float .....	1	L59	MR	QM8/433
	6P3012	Spring, valve, inward .....	1	—	MR	QM8/434
	13P3012	Spring, valve, outboard .....	1	—	MR	QM8/435
1433911	12P3012	Packing, 1/32" thick x 2-3/16" dia. ....	1	—	C	QM8/435A

SERVICES  
FUEL SYSTEM  
IN MAIN PLANE

Ref. No.	Part No.	Description				No. off	Mach. Spec.	Cl. of St.	Plate and Illust'n No.
		1	2	3	4			M.R.	
		TANK, WING, No. 6, PORT AND STARBOARD (1 & 2P2830) Spares for:—							
6A/4333669	SMITH WAYMOUTH JM3			Box, tank, terminal .....	1	—	A	QM9/436	
6A/4339378	SMITH WAYMOUTH PL/T/68/T			Connector, internal .....	1	—	C	QM9/437	
6A/4070	SMITH WAYMOUTH PE/T/70/T			Connector, internal .....	1	—	C	QM9/438	
6A/4333676	SMITH WAYMOUTH PL/T/18/Z			Connector, internal .....	1	—	C	QM9/439	
6A/4333578	SMITH WAYMOUTH PE/T/20/Z			Connector, internal .....	1	—	C	QM9/440	
	20P2827			Hose, drain outlet, 3/16" i/d x 4" long ....	1	DTD625A		QM9/441	
		RESERVOIR AND FUEL PUMP, PORT AND STBD. (7 & 8P3272) Spares for:—							
17692	75P3127			Clip, pipe, 5/8" dia. ....	15	L72	MR	QM9/442	
	86P3127			Clip, pipe, 2" dia. ....	1	L72	C	QM9/443	
	FIREPROOF TANKS LTD. FT1826			Clip, attachment of pipes to tanks .....	16	—	MR	QM9/444	
	66P3127			Hose, 5/8" i/d x 2" long .....	3	DTD625A		QM9/445	
11531	69P3127			Packing, for attachment of pipes to tank, 1/16" x 3-3/4" x 1-1/4" .....	—	—	C	QM9/446	
2622	56P3127			Pipe, fuel, from reservoir to joint, 5/8" o/d x 22G x 3' 10" long approx., port	1	L56	C	QM9/447	
	57P3127			Pipe, fuel, from reservoir to joint, 5/8" o/d x 22G x 3' 10" long approx., stbd.	1	L56	MR	QM9/448	
7982	63P3127			Pipe, fuel between joints, 5/8" o/d x 22G x 2' 3" long approx.	1	L56	C	QM9/449	
7975	35P3272			Pipe, fuel, from joint to fuel pump, 5/8" o/d x 22G x 4' 11" long approx., port	1	L56	C	QM9/450	
7976	36P3272			Pipe, fuel, from joint to fuel pump, 5/8" o/d x 22G x 4' 11" long approx., starboard	1	L56	C	QM9/451	
		PUMP, FUEL, AND FUEL LEVER SWITCH, PORT AND STBD. (19 & 20P3272) Spares for:—							
	8355V8100			Cable .....	1	—		QM9/452	
	8363V8101			Cable .....	1	—		QM9/453	
	40P3272			Gasket .....	1	—	MR	QM9/454	
	12P3272			Hose, 3/8" i/d x 2" long .....	1	DTD625A		QM9/455	



SERVICES  
FUEL SYSTEM  
IN MAIN PLANE

Ref. No.	Part No.	Description	No. off	Matl. Spec.	Cl. of St.	Plate and illust'n No.	
					M.R.		
		1	2	3	4		
		TANK, WING, No. 6, PORT AND STARBOARD (1 & 2P2830) (Cont'd.)					
		SUMP, No. 6 TANK, PORT AND STARBOARD ( & 2P3477)					
		Spares for:—					
9854	5P2844	Adaptor, for inhibitor drain .....	1	DTD368A	C	QM9/474	
	3P3480	Elbow, outlet, 1-1/2" BSP, port .....	1	L33	MR	QM9/475	
	4P3480	Elbow, outlet, 1-2/2" BSP, starboard .....	1	L33	MR	QM9/476	
	1P2937	INHIBITOR, FUEL TANK, GROUP .....	1	—	MR	QM9/477	
		Spares for:—					
		Clip, Seeger (internal type) .....	1	—	C	QM9/478	
		AUTOMOTIVE ENG. CO.					
		15/16" BORE VICKERS ARMSTRONG A5269 Mk.A					
27F/4526669	4P2937	Cock, drain 1/4" BSP .....	1	—	A	QM9/479	
	2P2937	Cover .....	1	L72	MR	QM9/480	
	3P2937	Housing .....	1	DTD259A	MR	QM9/481	
	5P2937	Spider .....	1	L56	MR	QM9/482	
		Bag, chromate salts .....	1	—	MR		
	1P3597	PLATE, SUMP, PORT, GROUP .....	1	—	MR	QM9/483	
1433411	2P3597	PLATE, SUMP, STBD., GROUP .....	1	—	A	QM9/484	
		Spares for:—					
	3P2839	Stud, 2 BA .....	34	S94, 95, 96	MR		
	21P2841	Stud, 2 BA .....	12	S94, 95, 96	MR		
		PULSOMETER ENG. CO.					
5UE/4412045	PAC1200 Mk.4	Pump, fuel (Mod. 1572) .....	1	—	A	QM9/485	
	FLIGHT REFUELLING C1140107	Valve, refuelling, port .....	1	—	A	QM9/486	
	FLIGHT REFUELLING C1140106	Valve, refuelling, starboard .....	1	—	A	QM9/487	
	8P2844	Washer, sealing, outlet elbow .....	2	DTD364H or L40	MR	QM9/488	
	16P2844	Washer, sealing, refuelling valve .....	2	DTD762	MR	QM9/489	
	1/SS4087	Washer, jointing .....	1	L17	MR	QM9/490	
	11P2831	STOP, VENT VALVE, GROUP .....	1	—	MR	QM9/490A	
116	1P3252	TANK, FUEL, No. 6, PORT, GROUP .....	1	—	A	QM9/491	
117	2P3254	TANK, FUEL, No. 6, STBD., GROUP .....	1	—	A	QM9/492	
		(See:— Tanks fuel)					
6A/4333566	SMITH & SONS TM8, Mk.01	Unit, tank .....	1	—	A	QM9/493	
6A/4333567	SMITH & SONS TM9 Mod.01	Unit, tank .....	1	—	A	QM9/494	
	15P3012	VALVE FLOAT, GROUP (Mod. 1356) .....	1	—	MR	QM9/495	
		Spares for:—					
	2P3012	Body, valve .....	1	L59	MR	QM9/496	
	4P3012	Floa, cock .....	1	—	MR	QM9/497	
	7P3012	Housing, spring .....	1	L59	MR	QM9/498	
	9P3012	Housing, valve .....	1	L59	MR	QM9/499	

VULCAN HL. 2

SERVICES  
FUEL SYSTEM  
IN MAIN PLANE

Page QM. 29

Ref. No.	Part No.	Description	No. off				Matl. Spec.	Cl. of St. M.R.	Plate and Illust'n No.
			1	2	3	4			
1433911		VALVE, FLOAT, GROUP (15P3012) (Cont'd)							
	14P3012	Plate, retaining .....	1			L59	MR	QM9/500	
	3P3012	Sleeve, float .....	1			L59	MR	QM9/501	
	6P3012	Spring, valve, inward .....	1			—	MR	QM9/502	
	13P3012	Spring, valve, outward .....	1			—	MR	QM9/503	
	12P3012	Packing, 1/32" thick x 2-3/16" dia. ....	1			—	C	QM19/503A	
		TANK, WING, No. 7, PORT & STBD. (1 & 2P2831) Spares for:—							
6A/4333669	SMITH WAYMOUTH JM3	Box, tank terminal .....	1			—	A	QM10/504	
6A/4333385	SMITH WAYMOUTH PL/T/30/T	Connector, internal .....	1			—	C	QM10/506	
6A/4333572	SMITH WAYMOUTH PL/T/34/T	Connector, internal .....	1			—	B	QM10/507	
6A/4333453	SMITH WAYMOUTH PL/T/54/T	Connector, internal .....	1			—	B	QM10/508	
6A/4333681	SMITH WAYMOUTH PE/T/34/T	Connector, internal .....	1			—	B	QM10/509	
6A/4333579	SMITH WAYMOUTH PE/T/38/T	Connector, internal .....	1			—	B	QM10/510	
6A/4333580	SMITH WAYMOUTH PE/T/58/T	Connector, internal .....	1			—	B	QM10/511	
6A/4333676	SMITH WAYMOUTH PL/T/18/Z	Connector, internal .....	1			—	B	QM10/512	
6A/4333578	SMITH WAYMOUTH PE/T/20/Z	Connector, internal .....	1			—	B	QM10/513	
	20P2827	Hose, drain outlet, 3/16" i/d x 4" long ....	1			DTD625A		QM10/514	
		RESERVOIR AND PUMP, PORT & STARBOARD (9 & 10P3272) Spares for:—							
17692	75P3127	Clip, pipe, 5/8" dia. ....	15			L72	MR	QM10/515	
	86P3127	Clip, pipe, 2" dia. ....	1			L72	C	QM10/516	
		Clip, attachment of pipes to tank .....	16			—	MR	QM10/517	
		Hose, 5/8" i/d x 2" long .....	3			DTD625A		QM10/518	
		Packing, attachment of pipes to tank ....	8			—		QM10/519	
		Pipe, fuel, from reservoir to joint, 5/8" .. o/d x 22G x 3' 4" long approx., port	1			L56	MR	QM10/520	
2625	59P3127	Pipe, fuel, from reservoir to joint, 5/8" .. o/d x 22G x 3' 4" long approx., stbd.	1			L56	C	QM10/521	

SERVICES  
FUEL SYSTEM  
IN MAIN PLANE

Ref. No.	Part No.	Description				No. off	Matl. Spec.	Cl. of St.	Plate and Illust'n No.
		1	2	3	4			M.R.	
		RESERVOIR AND PUMP, PORT & STARBOARD (9 & 10P3272) (Cont'd.)							
7983	64P3127				Pipe, fuel, between joints, 5/8" o/d x 22G x 3' 10" long approx.	1	L56	C	QM10/522
	37P3272				Pipe, fuel, from joint to fuel pump, 5/8" o/d x 22G x 4' 4" long approx., port	—	—	MR	QM10/523
7978	38P3272				Pipe, fuel, from joint to fuel pump, 5/8" o/d x 22G x 4' 4" long approx., stbd.	1	L56	C	QM10/524
		PUMP, FUEL, AND FUEL LEVEL SWITCH, PORT AND STARBOARD (21 & 22P3272)							
		Spares for:—							
	8353V8100				Cable, port	1	—		QM10/525
	8360V8101				Cable, starboard	1	—		QM10/526
	40P3272				Gasket	1	—	MR	QM10/527
	12P3272				Hose, 3/8" i/d x 2" long	1	DTD625		QM10/528
	11P3600				MOUNTING, PUMP AND SWITCH SUPPORT, PORT, GROUP	1	—	MR	QM10/529
	10P3600				MOUNTING, PUMP AND SWITCH SUPPORT, STBD., GROUP	1	—	MR	QM10/530
5UE/6850	PAC100 Mk. 3				Pump, fuel (Mod. 785)	1	—	A	QM10/531
5CW/4405246	REFUELLING C3510100/1				Switch, float (Mod. 1043)	1	—	A	QM10/532
17899	1P3126				RESERVOIR, FUEL TANK, TWO TIER, PORT, GROUP	1	—	B	QM10/533
	2P3126				RESERVOIR, FUEL TANK, TWO TIER, STARBOARD, GROUP	1	—		QM10/534
	FIREPROOF TANKS LTD. FT4611				Gasket	1	—	MR	QM10/535
28FP/9429531	DZUS LTD. S4/225				Spring	3	—	C	QM10/536
22201	22P3126				TIER, RESERVOIR TOP, PORT, GROUP	1	—	C	QM10/537
	21P3126				TIER, RESERVOIR TOP, STBD., GROUP	1	—		QM10/538
12985	29P3126				TIER, RESERVOIR BOTTOM, PORT, GROUP	1	—	B	QM10/539
12984	28P3126				TIER, RESERVOIR BOTTOM, STARBOARD, GROUP	1	—	B	QM10/540
	1P3119				Spares for:— VALVE, FLAP, GROUP	—	—	MR	QM10/541
					ATTACHMENTS—RESERVOIR TIERS (Part Nos. 21, 22, 28 & 29P3126)				
28D/9133011	A25/2C				Bolt, 2 BA	37	—	C	
28W/9419402	SP13/C				Washer, 2 BA	31	—	C	

VULCAN Mk. 2

SERVICES  
FUEL SYSTEM  
IN MAIN PLANE

Page QM. 31

Ref. No.	Part No.	Description	No. off	Matl. Spec.	Cl. of St.	Plate and Illust'n No.
					M.R.	
		1 2 3 4				
		RESERVOIR AND PUMP, PORT AND STARBOARD (9 & 10P3272) (Cont'd.)				
27FR/4692826	FIREPROOF TANKS LTD. FT3626/S/39/12 FLIGHT REFUELLING B3504377	Ring, bolt, "D" .....	1	—	MR	QM10/542
27FR/4692827	FLIGHT REFUELLING B3504378	Steady, for fuel level switch, port .....	1	—	B	QM10/543
		Steady, for fuel level switch, starboard ....	1	—	B	QM10/544
		SUMP, No. 7 TANK, PORT (1P3478) SUMP, No. 7 TANK, STBD. (P13479) .....				
		Spares for:—				
28F/4051853	AGS1105/K	Adaptor, 1-1/2" o/d .....	—	—	C	QM10/545
8649	2P3478	Adaptor, extension piece, port .....	—	DTD130	C	QM10/546
7219	5P3480	Elbow, outlet, 1-1/2" BSP, port .....	—	L33	C	QM10/547
	2P3480	Elbow, outlet, 1-1/2" BSP, stbd. ....	—	L33	MR	QM10/548
	1P2937	INHIBITOR, FUEL TANK, GROUP .....	1	—		QM10/549
		Spares for:—				
	AUTOMOTIVE ENG. Co. 15/16" BORE VICKERS ARMSTRONG A5269 Mk.A	Clip, Seeger (internal type) .....	1	—		QM10/550
27F/4526669	4P2937	Cock, drain, 1/4" BSP .....	1	—	A	QM10/551
	2P2937	Cover .....	1	L72	MR	QM10/552
	3P2937	Housing .....	1	DTD259A		QM10/553
	5P2937	Spider .....	1	L16	MR	QM10/554
		Bag, chromate salts .....	1	—	MR	
	11P2845	PLATE, SUMP, PORT, GROUP .....	1	—	MR	QM10/555
	14P2845	PLATE, SUMP, STBD., GROUP .....	1	—		QM10/565
		Spares for:—				
	3P2839	Stud, 2 BA .....	46	—	MR	
	4P2839	Stud, 2 BA .....	14	—	MR	
5UE/4412045	PULSOMETER ENG. Co. PAC1200 Mk.4	Pump, fuel (Mod. 1572) .....	1	—	A	QM10/557
5UE/4407261	PULSOMETER ENG. Co. PAC500 Mk.3	Pump, transfer (Mod. 789) .....	1	—	A	QM10/558
27F/2941	VICKERS ARMSTRONG A5713	Valve, non-return (Port only) .....	1	—	B	QM10/559
	FLIGHT REFUELLING C1140108 Mk.40	Valve, refuelling, port .....	1	—		QM10/560
	FLIGHT REFUELLING C1140109 Mk.40	Valve, refuelling, starboard .....	1	—		QM10/561

SERVICES  
FUEL SYSTEM  
IN MAIN PLANE

Ref. No.	Part No.	Description	No. off	Mati. Spec.	Cl. of St.	Plate and illust'n No.	
					M.R.		
		1	2	3	4		
		SUMP, No. 7 TANK, PORT AND STBD. (1P3478 & 1P3479) (Cont'd.)					
	5P2845	Washer, sealing, transfer pump .....	1	DTD762	MR	QM10/562	
	8P2844	Washer, sealing, outlet elbow .....	2	DTD762	MR	QM10/563	
	16P2844	Washer, sealing, refuelling valve .....	1	DTD762	MR	QM10/564	
	1/SS4087	Washer, jointing .....	1	L17	MR	QM10/565	
	11P2831	STOP, VENT VALVE, GROUP .....	1	—	MR	QM10/565A	
118	1P3253	TANK, FUEL, No. 7, PORT, GROUP .....	1	—	A	QM10/566	
119	2P3253	TANK, FUEL, No. 7, STBD., GROUP .....	1	—	A	QM10/567	
		(See—Tanks fuel)					
6A/4333568	SMITH & SONS TM10 Mk.01	Unit, tank .....	1	—	A	QM10/568	
6A/4333569	SMITH & SONS TM11 Mod.01	Unit, tank .....	1	—	A	QM10/569	
6A/4333570	SMITH & SONS TM12 Mod.01	Unit, tank .....	1	—	A	QM10/570	
6A/4333571	SMITH & SONS TM13 Mod.01	Unit, tank .....	1	—	A	QM10/571	
	15P3012	VALVE, FLOAT, GROUP (Mod. 1356) .....	1	—	MR	QM10/572	
		Spares for:—					
	2P3012	Body, valve .....	1	L59	MR	QM10/573	
	4P3012	Float, cork .....	1	—	MR	QM10/574	
	7P3012	Housing, spring .....	1	L59	MR	QM10/575	
	9P3012	Housing, valve .....	1	L59	MR	QM10/576	
	14P3012	Plate, retaining .....	1	L59	MR	QM10/577	
	3P3012	Sleeve, float .....	1	L59	MR	QM10/578	
	6P3012	Spring, valve, inward .....	1	—	MR	QM10/579	
	13P3012	Spring, valve, outboard .....	1	—	MR	QM10/580	
1433911	12P3012	Packing, 1/32" thick x 2-3/16" dia. ....	1	—	C	QM10/580A	
	VICKERS ARMSTRONG A5686/J	Valve, non-return (starboard) .....	1	—		QM10/581	
	VICKERS ARMSTRONG A5713 Mk.5-1/4"	Valve, non-return (Alternative to be used when stocks of A5686/J are exhausted)	1	—		QM10/582	

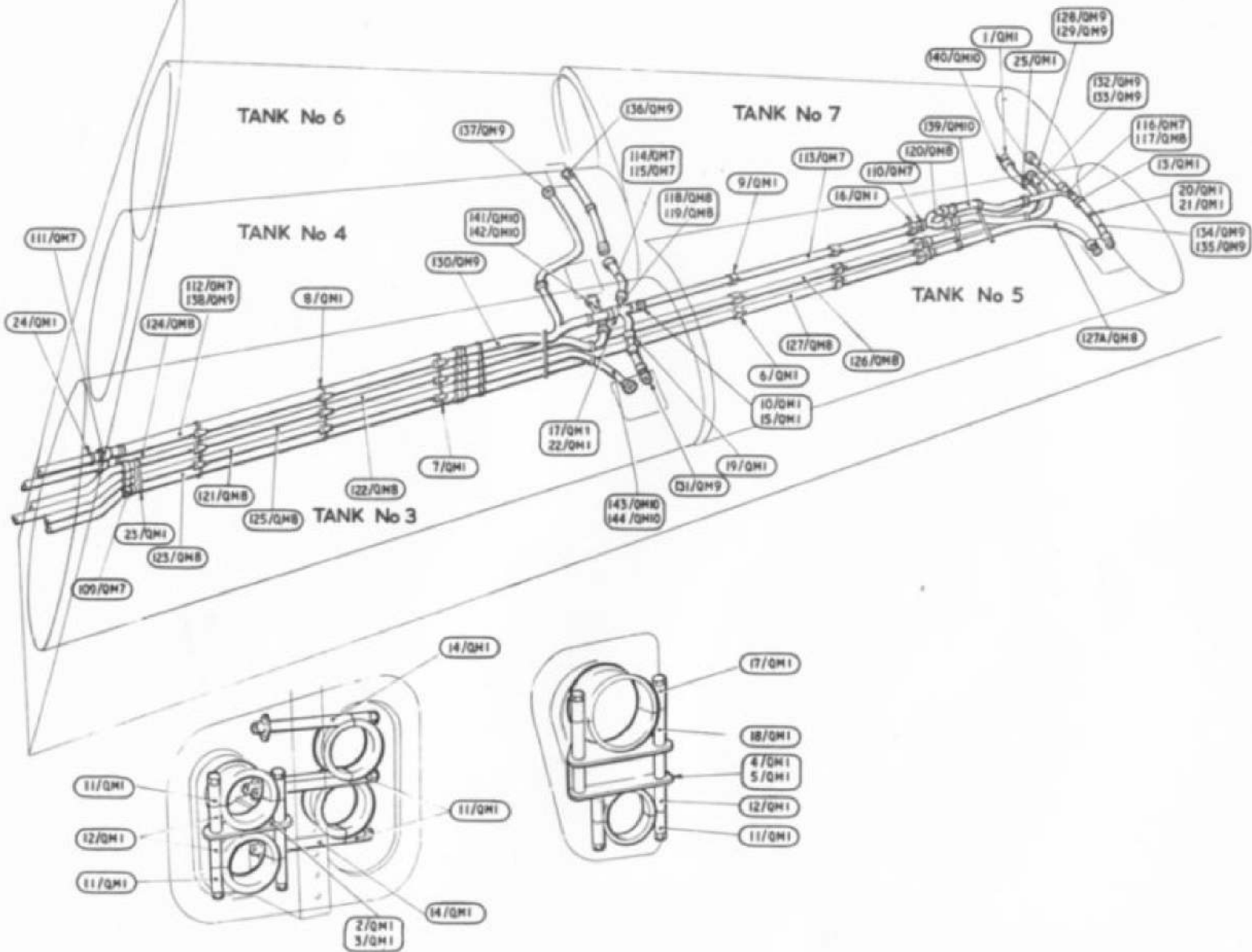
VULCAN Mk. 2

SERVICES  
FUEL SYSTEM  
SUMMARY OF STANDARD ITEMS

Page QM. 33

Stores Ref.		No. off	Stores Ref.		No. off	Stores Ref.		No. off
Section	Ref. No.		Section	Ref. No.		Section	Ref. No.	
28D	9133011	240						
28F	12193	1						
28FP	9429531	3						
28FP	4070037	3						
28FP	9429531	9						
28W	9419402	240						

FUEL SYSTEM  
MAINPLANE

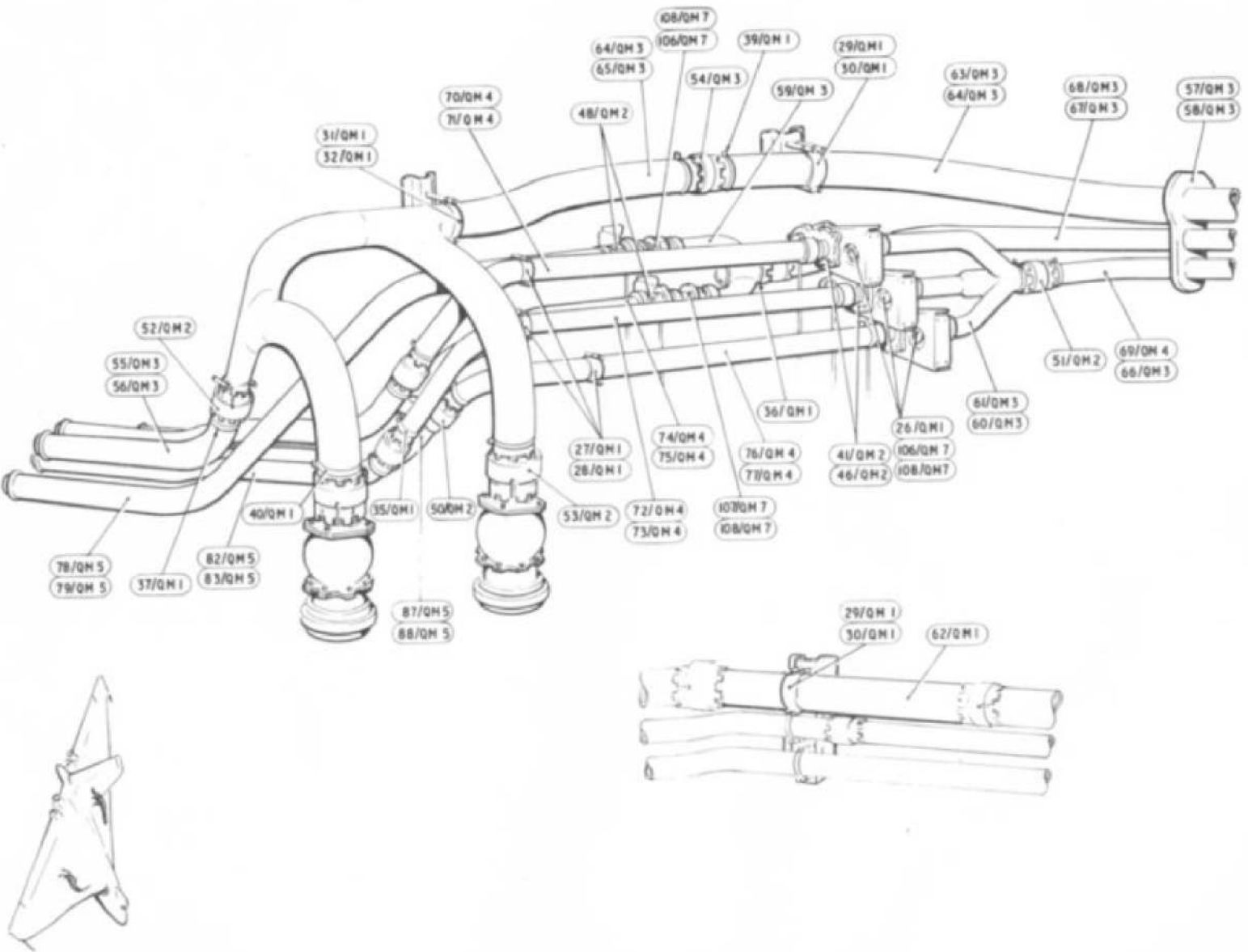


RESTRICTED

PLATE No QM 1  
ISSUE 2

RESTRICTED

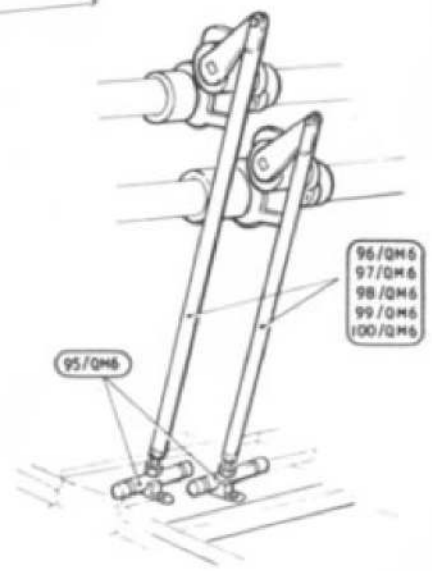
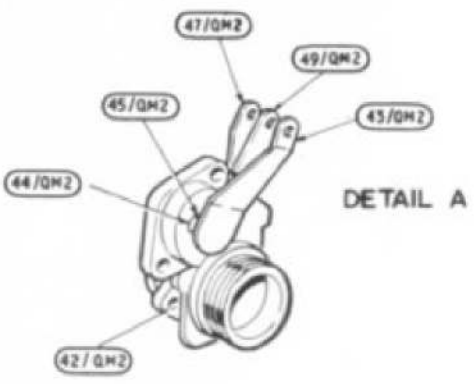
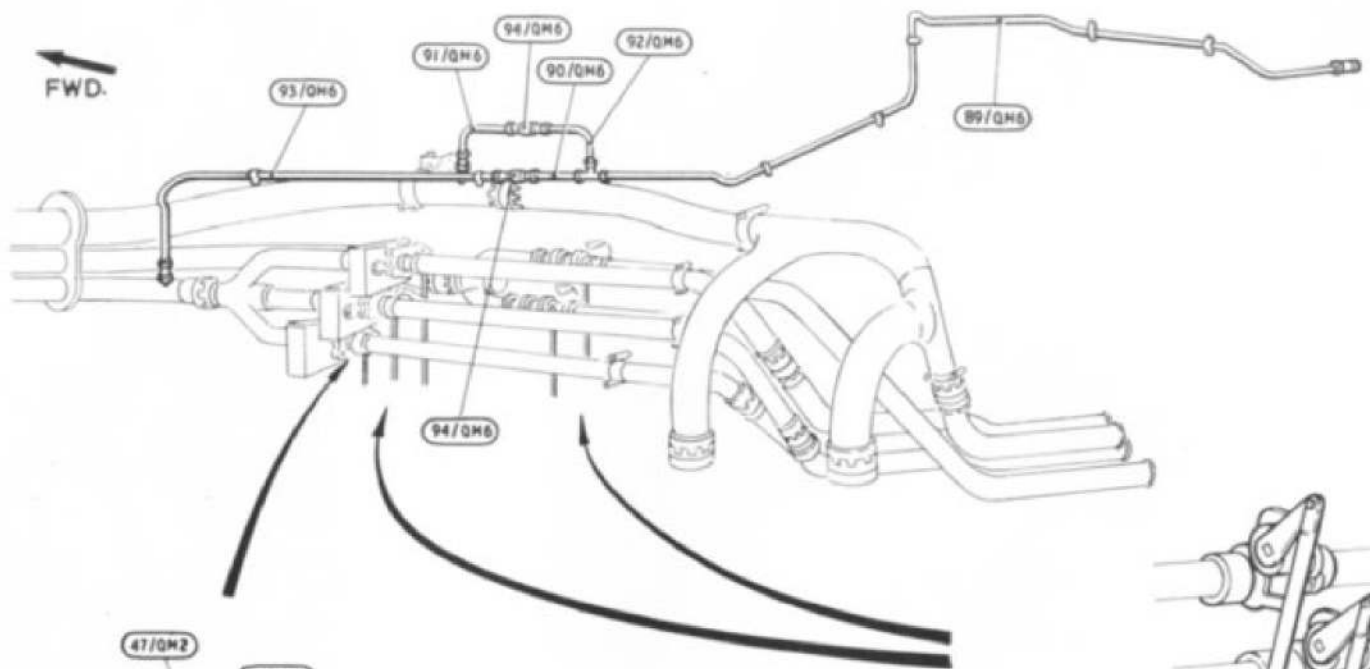
PLATE No. QM 2  
ISSUE 1



FUEL SYSTEM

COCKS & PIPES FOR TANK SERVICE, U/C RIB OUTBOARD. PORT & STBD.

RESTRICTED

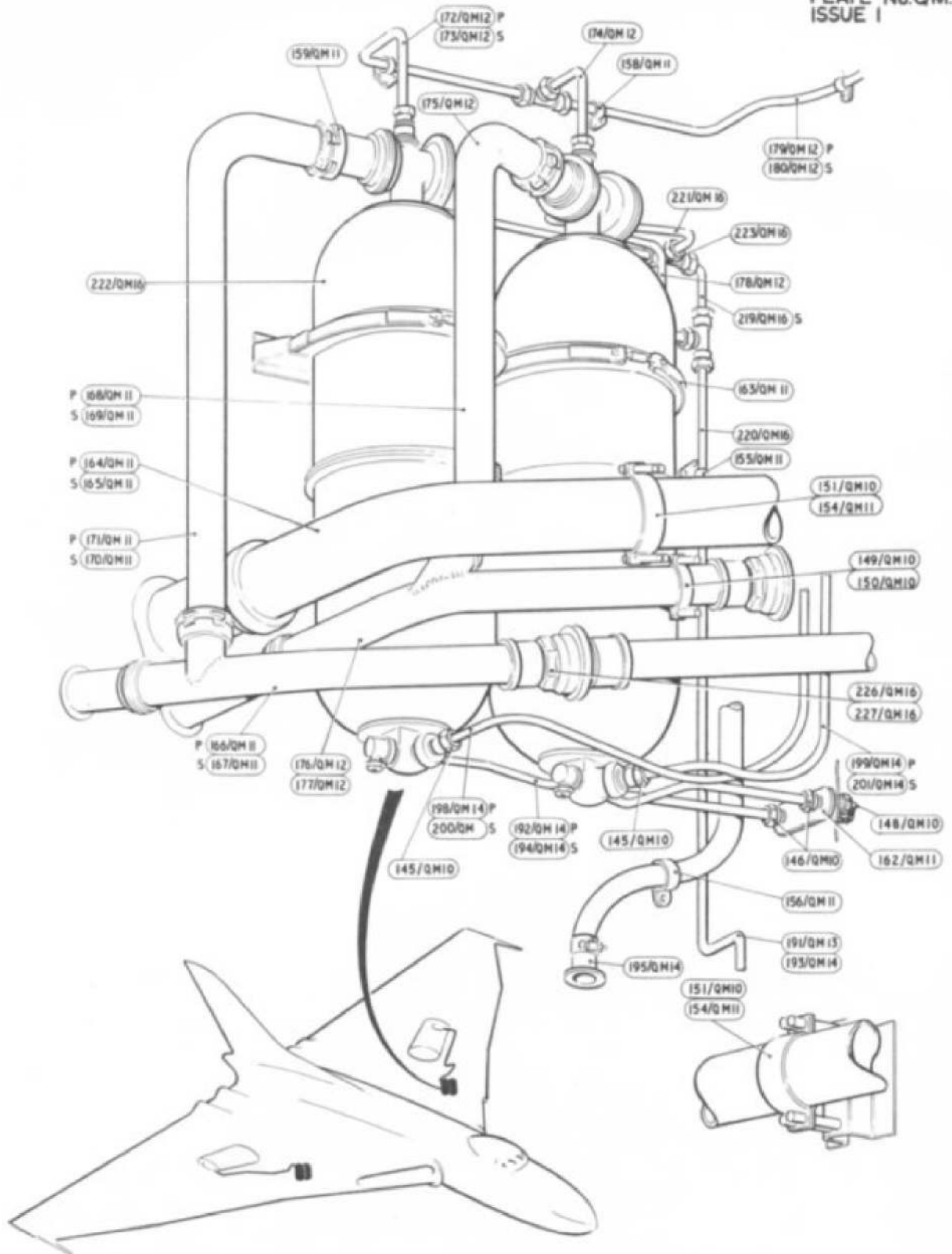


FUEL SYSTEM

RESTRICTED

RESTRICTED

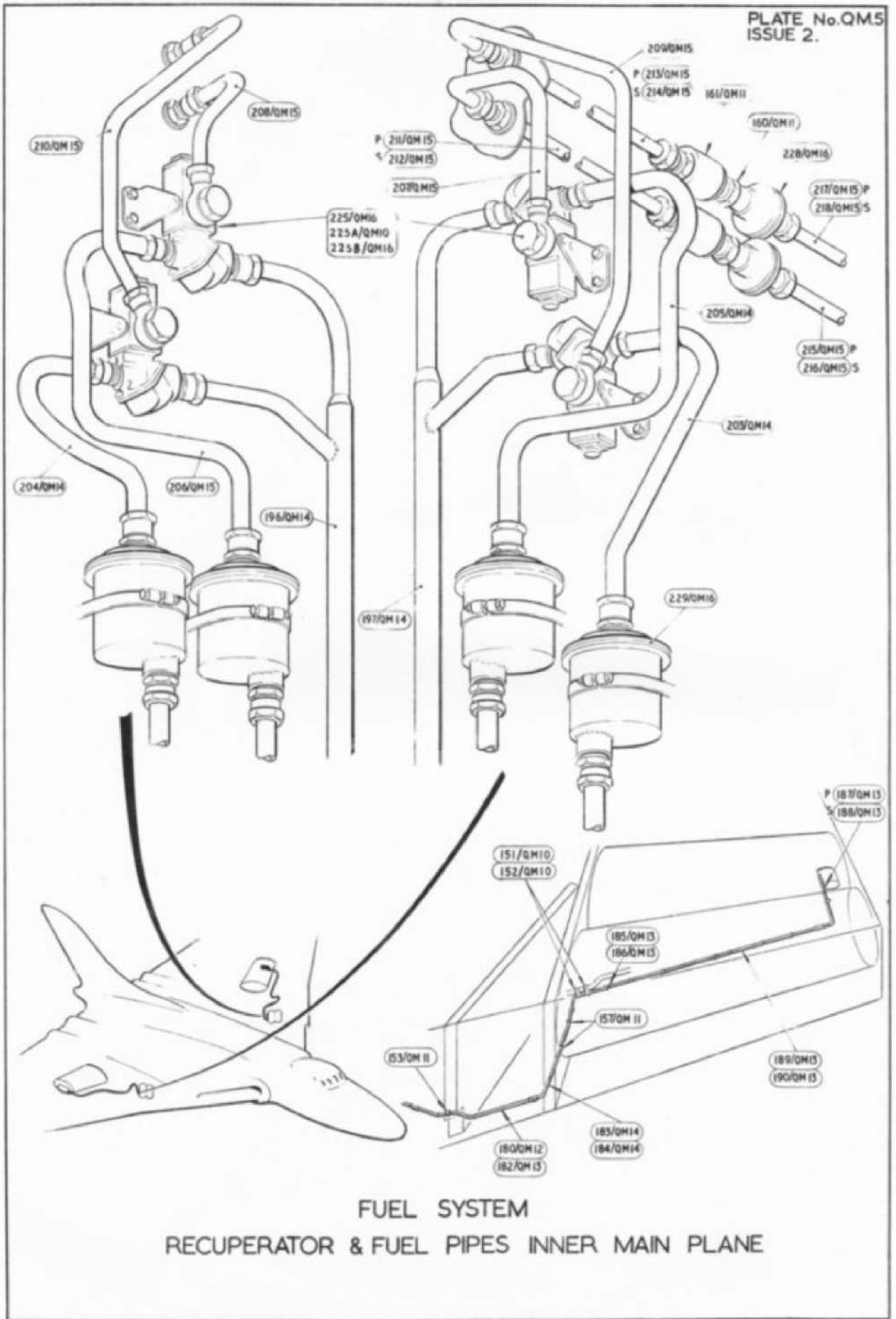
PLATE No. OM3  
ISSUE 1



FUEL SYSTEM  
RECUPERATOR & FUEL PIPES INNER MAIN PLANE

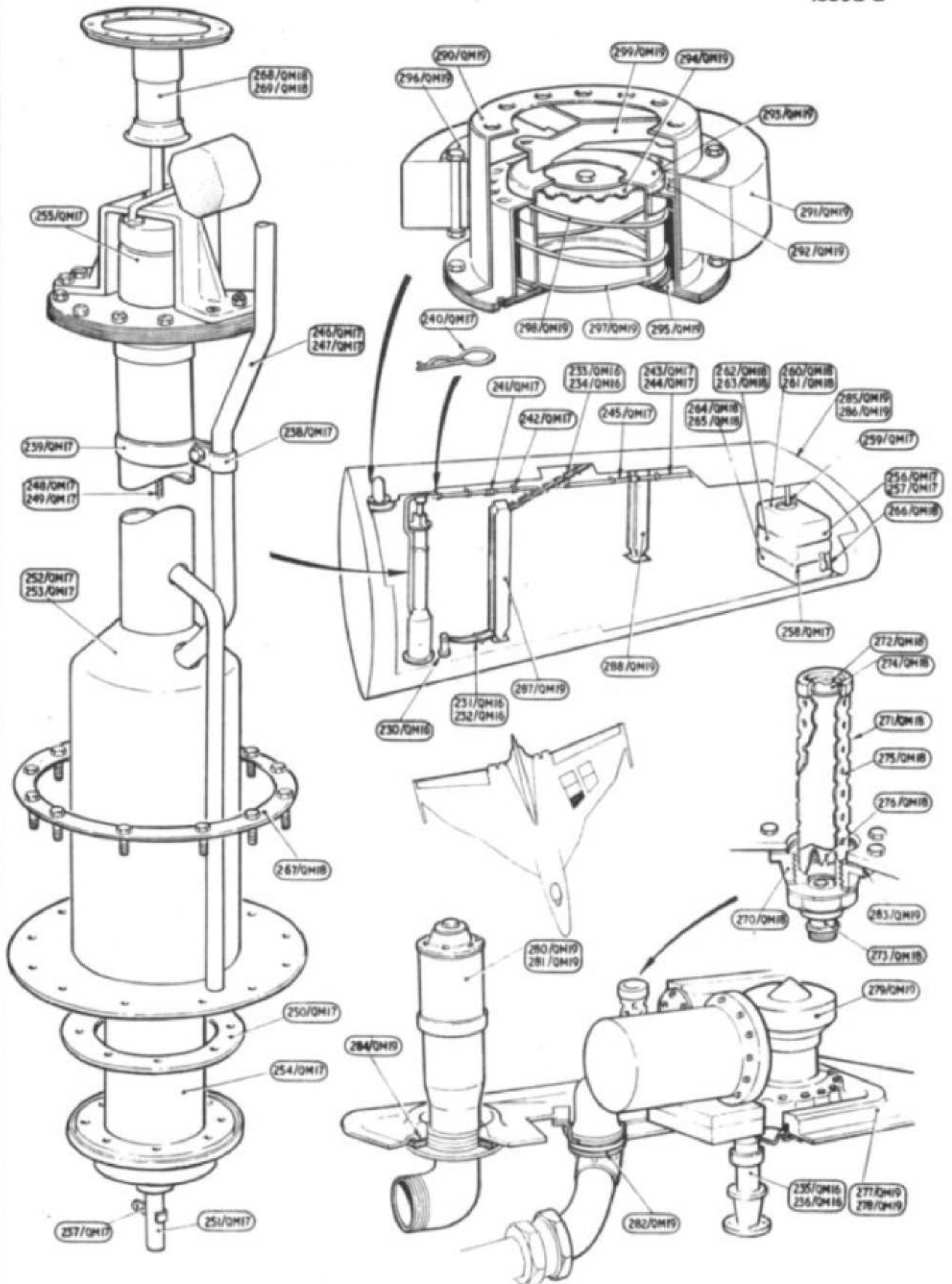
RESTRICTED

PLATE No.QM5  
ISSUE 2.

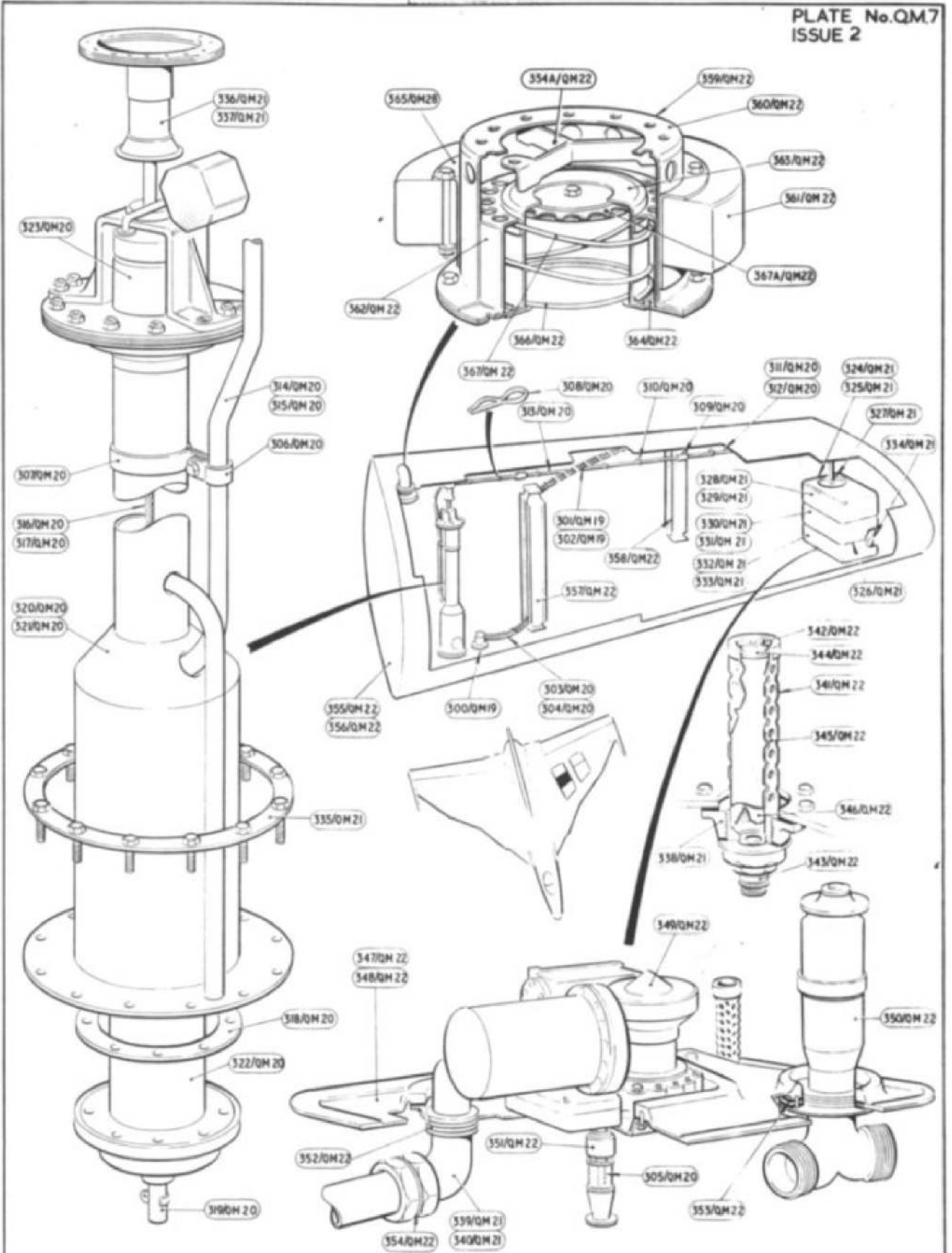


FUEL SYSTEM  
RECUPERATOR & FUEL PIPES INNER MAIN PLANE

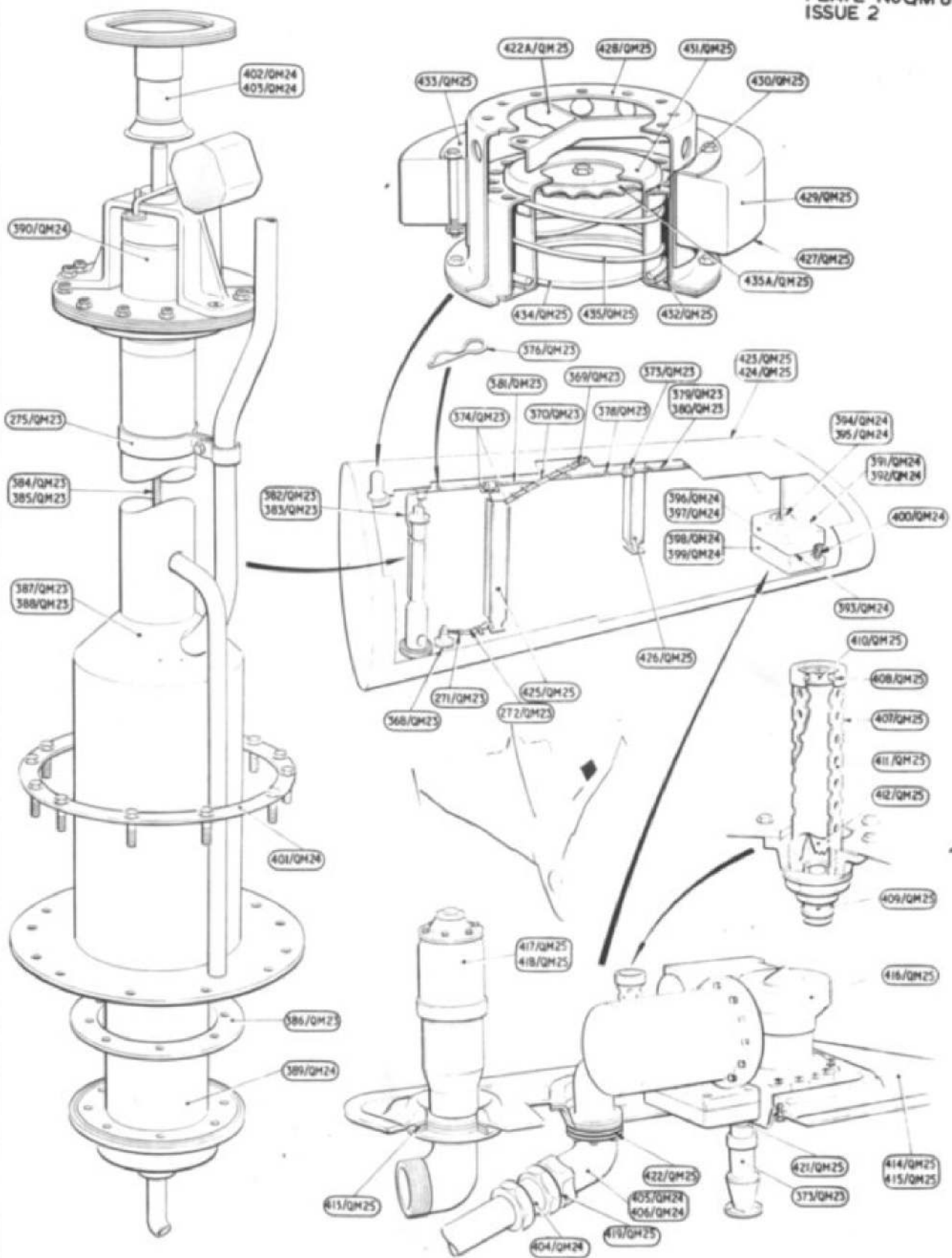
RESTRICTED



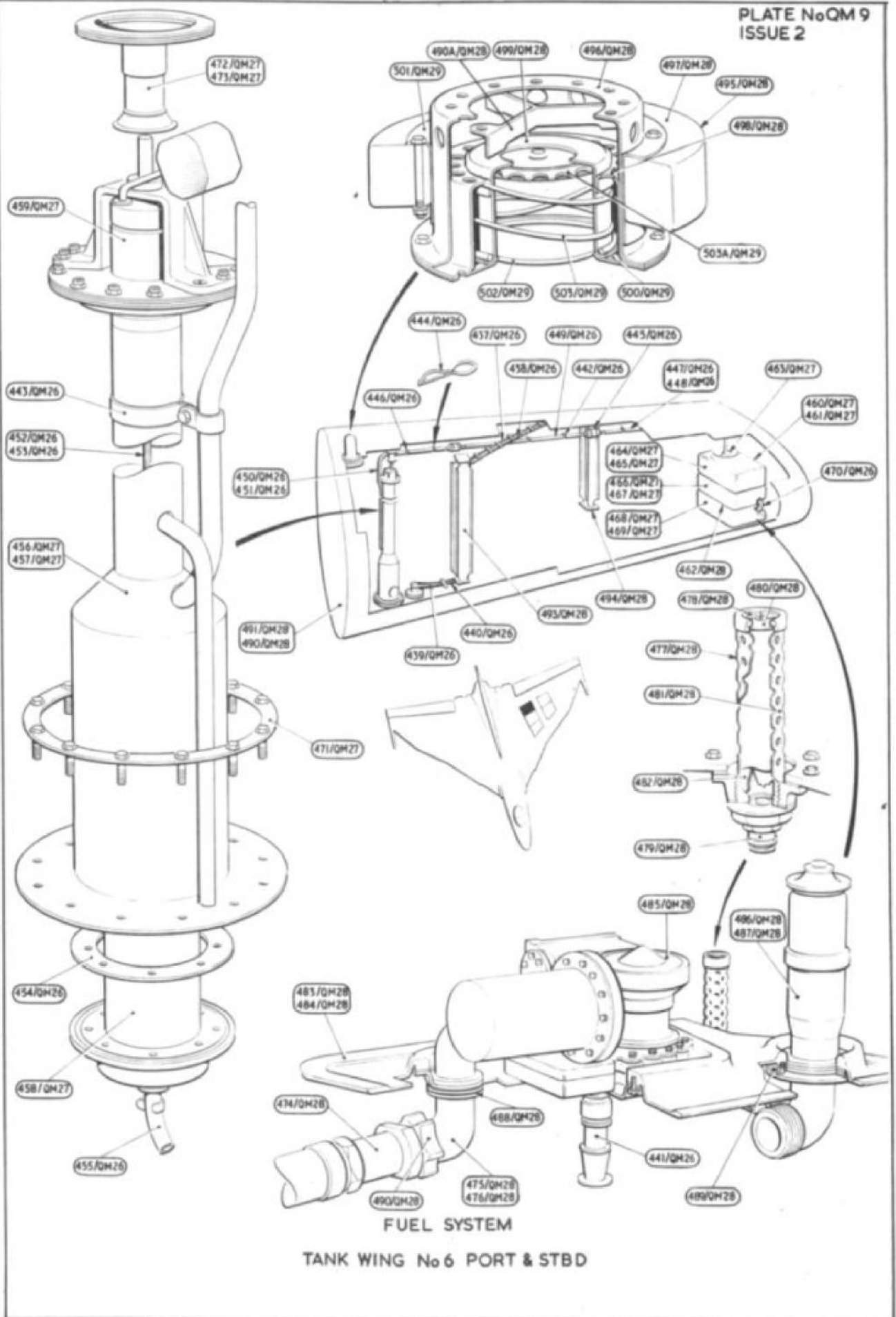
FUEL SYSTEM  
TANK WING No 3 PORT & STB'D

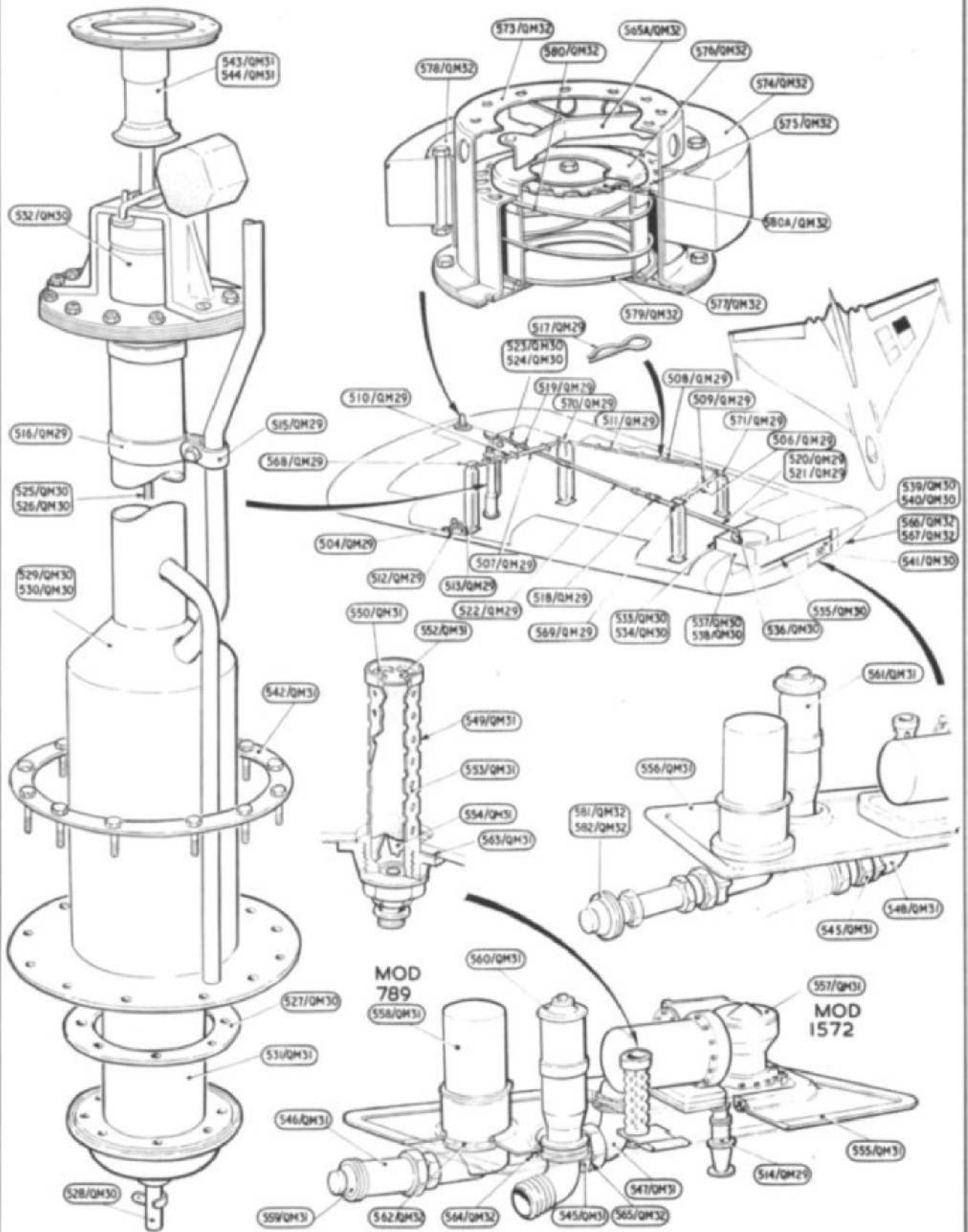


FUEL SYSTEM  
TANK WING No. 4 PORT & STBD




FUEL SYSTEM  
TANK WING No.5 PORT & STB'D





FUEL SYSTEM  
TANK WING No.7 PORT & STBD.



This file was downloaded  
from the RTFM Library.

Link: [www.scottbouch.com/rtfm](http://www.scottbouch.com/rtfm)

Please see site for usage terms,  
and more aircraft documents.