

VULCAN Mk. 2

TANKS
FUEL, A.A.P.P.

Page SB. 1

| Ref. No. | Part No. | Description | No. off | Matl. Spec. | Cl. of St. | Plate and Illust'n No. |
|------------------|--|--|---------|-------------|------------|------------------------|
| | | | | | M.R. | |
| 7100 | 28F9809 | TANK, FUEL, A.A.P.P. GROUP | 1 | — | A | SB1/1 |
| 13590 | 27F9809 | Spares for:— CANISTER, PUMP, GROUP | 1 | — | B | SB1/2 |
| | 27bF9809 | Spares for:— CANISTER, BODY, GROUP | 1 | — | | |
| | 27eF9809 | Ring, split, retaining | 2 | — | | |
| | P3119 | VALVE, FLAP, GROUP | 1 | — | MR | SB1/28 |
| 27F/4526669 | 32F9809 | Bracket, drain cock | 1 | — | | SB1/29 |
| | A5269 | Cock, drain | 1 | — | C | SB1/3 |
| | 26F9809 | Elbow, vent | 1 | L54 & L59 | MR | SB1/4 |
| | 31F9809 | Flange, stud, drain cock | 1 | — | | |
| | 33F9809 | Gasket, drain cock bracket | 1 | DTD762 | MR | SB1/5 |
| 5UE/8389 | SPE17197 | 2-1/4" x 1-5/8" x 1/16" thick Gasket, between pump and I.F. valve | 1 | — | C | SB1/27 |
| | 29F9809 | PLATE, COVER, GROUP BTM | 1 | — | MR | SB1/6 |
| 5UE/ 4407215 | 30F9809 PULSOMETER PDC20 Mk. 2 | PLATE, COVER, GROUP, TOP | 1 | — | | SB1/7 |
| | 20F9809 | Pump, fuel less inverted flight valve | 1 | — | A | SB1/8 |
| 22212 | 21F9809 | Ring, packing, transfer valve | 1 | — | | SB1/14 |
| 22213 | 22F9809 | Ring, half, stud top | 2 | — | C | SB1/15 |
| | 12F9809 | Ring, stud, bottom | 1 | — | C | SB1/16 |
| | 13F9809 | Stud, special, 2 BA x 0.93" long | 44 | S1 | MR | SB1/9 |
| | 14F9809 | Stud, special 2 BA x 1.00" long | 14 | S1 | MR | SB1/10 |
| | 15F9809 | Stud, special 2 BA x 1.20" long | 14 | S1 | MR | SB1/11 |
| | 19F9809 | Stud, special, 1/4" BSF x 1.00" long | 2 | S1 | MR | SB1/12 |
| | FLIGHT RE-FUELLING | Stud, special, 2 BA x 1.30" long | 8 | S1 | MR | SB1/13 |
| 5CW/6655 | C3504100/44 FLIGHT RE-FUELLING | Switch, float, dropping level | 1 | — | A | SB1/17 |
| 5CW/5928 | C3504100/21 FLIGHT RE-FUELLING | Switch, float, rising, level | 1 | — | A | SB1/18 |
| 5UE/ 4674608 | PULSOMETER PUL019042 FLIGHT RE-FUELLING | Valve, inverted flight | 1 | — | A | SB1/26 |
| 27FR/ 4679991 | B3609030 FLIGHT RE-FUELLING | Valve, transfer, Mk. 9 (Pre-Mod. 2140) | 1 | — | | |
| | B3609230 FLIGHT RE-FUELLING | Valve, transfer, Mk. 9 (Mod. 2140) | 1 | — | | SB1/19 |
| | 8F9809 | Washer, jointing, I.F. valve, 6.75" o/d | 1 | DTD762 | MR | SB1/20 |
| | 10F9809 | x 5.50" i/d x 1/16" thick Washer, jointing, vent elbow 2.10" o/d | 1 | DTD762 | MR | SB1/21 |
| | | x 0.75" i/d x 1/16" thick | | | | |

TANKS
FUEL A.A.P.P.

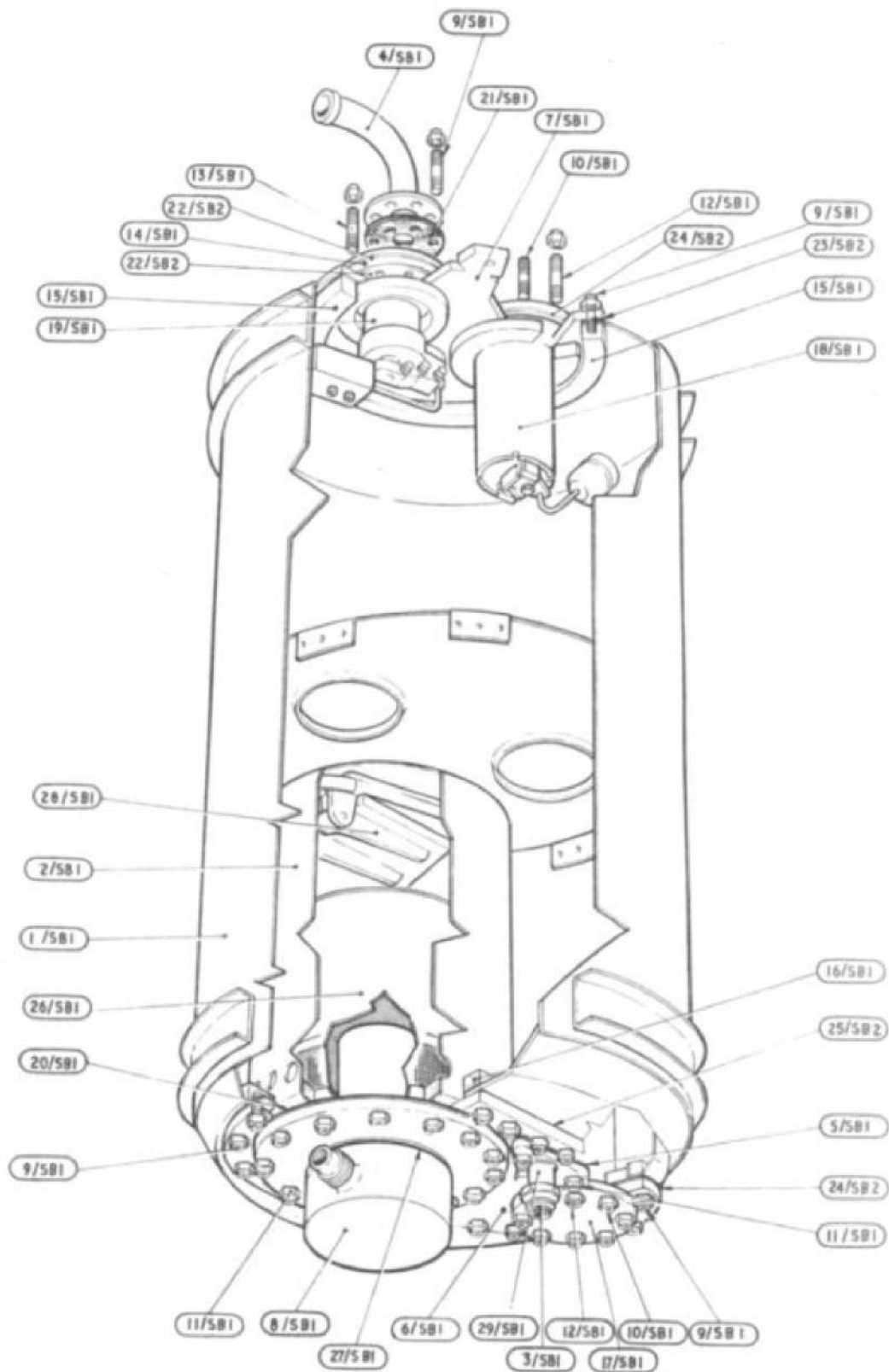
| Ref. No. | Part No. | Description | No. off | Matl. Spec. | Cl. of St. | Plate and Illust'n No. |
|----------|----------|--|---------|-------------|------------|------------------------|
| | | | | | M.R. | |
| | | 1 2 3 4 | | | | |
| | | TANK, FUEL A.A.P.P. GROUP (28F9809) (Cont'd.) | | | | |
| | 11F9809 | Washer, jointing transfer valve 3.10" o/d x 2.00" i/d x 1/16" thick | 2 | DTD762 | MR | SB1/22 |
| | 16F9809 | Washer, jointing, top cover plate 7.80" o/d x 6.80" i/d x 1/16" thick | 1 | DTD762 | MR | SB1/23 |
| | 17F9809 | Washer, jointing, dropping and rising float switches 3.40" o/d x 2.00" i/d x 1/16" thick | 2 | DTD762 | MR | SB1/24 |
| | 18F9809 | Washer, jointing, bottom cover plate 11.50" o/d x 8.00" i/d" x 1/16" thick | 1 | DTD762 | MR | SB1/25 |

VULCAN Mk. 2

TANKS
FUEL, A.A.P.P.

Page SB. 1

| Ref. No. | Part No. | Description | No. off | Matl. Spec. | Cl. of St. | Plate and Illust'n No. |
|------------------|-------------|--|---------|-------------|------------|------------------------|
| | | | | | M.R. | |
| 7100 | 28F9809 | TANK, FUEL, A.A.P.P. GROUP | 1 | — | A | SB1/1 |
| 13590 | 27F9809 | Spares for:— CANISTER, PUMP, GROUP | 1 | — | B | SB1/2 |
| | 27bF9809 | Spares for:— CANISTER, BODY, GROUP | 1 | — | | |
| | 27eF9809 | Ring, split, retaining | 2 | — | | |
| | P3119 | VALVE, FLAP, GROUP | 1 | — | MR | SB1/28 |
| 27F/4526669 | 32F9809 | Bracket, drain cock | 1 | — | | SB1/29 |
| | A5269 | Cock, drain | 1 | — | C | SB1/3 |
| | 26F9809 | Elbow, vent | 1 | L54 & L59 | MR | SB1/4 |
| | 31F9809 | Flange, stud, drain cock | 1 | — | | |
| | 33F9809 | Gasket, drain cock bracket | 1 | DTD762 | MR | SB1/5 |
| 5UE/8389 | SPE17197 | 2-1/4" x 1-5/8" x 1/16" thick Gasket, between pump and I.F. valve | 1 | — | C | SB1/27 |
| | 29F9809 | PLATE, COVER, GROUP BTM | 1 | — | MR | SB1/6 |
| 5UE/ 4407215 | 30F9809 | PLATE, COVER, GROUP, TOP | 1 | — | | SB1/7 |
| | PULSOMETER | Pump, fuel less inverted flight valve | 1 | — | A | SB1/8 |
| | PDC20 Mk. 2 | Ring, packing, transfer valve | 1 | — | | SB1/14 |
| 22212 | 20F9809 | Ring, half, stud top | 2 | — | C | SB1/15 |
| 22213 | 21F9809 | Ring, stud, bottom | 1 | — | C | SB1/16 |
| | 22F9809 | Stud, special, 2 BA x 0.93" long | 44 | S1 | MR | SB1/9 |
| | 12F9809 | Stud, special 2 BA x 1.00" long | 14 | S1 | MR | SB1/10 |
| | 13F9809 | Stud, special 2 BA x 1.20" long | 14 | S1 | MR | SB1/11 |
| | 14F9809 | Stud, special, 1/4" BSF x 1.00" long | 2 | S1 | MR | SB1/12 |
| | 15F9809 | Stud, special, 2 BA x 1.30" long | 8 | S1 | MR | SB1/13 |
| | 19F9809 | FLIGHT | | | | |
| 5CW/6655 | RE-FUELLING | Switch, float, dropping level | 1 | — | A | SB1/17 |
| | C3504100/44 | FLIGHT | | | | |
| 5CW/5928 | RE-FUELLING | Switch, float, rising, level | 1 | — | A | SB1/18 |
| 5UE/ 4674608 | C3504100/21 | PULSOMETER | | | | |
| | PUL019042 | Valve, inverted flight | 1 | — | A | SB1/26 |
| | FLIGHT | | | | | |
| 27FR/ 4679991 | RE-FUELLING | Valve, transfer, Mk. 9 (Pre-Mod. 2140) | 1 | — | | |
| | B3609030 | FLIGHT | | | | |
| | RE-FUELLING | Valve, transfer, Mk. 9 (Mod. 2140) | 1 | — | | SB1/19 |
| | B3609230 | Washer, jointing, I.F. valve, 6.75" o/d | 1 | DTD762 | MR | SB1/20 |
| | 8F9809 | x 5.50" i/d x 1/16" thick | | | | |
| | 10F9809 | Washer, jointing, vent elbow 2.10" o/d | 1 | DTD762 | MR | SB1/21 |
| | | x 0.75" i/d x 1/16" thick | | | | |



TANKS
A.A.P. FUEL

This file was downloaded
from the RTFM Library.

Link: www.scottbouch.com/rtfm

Please see site for usage terms,
and more aircraft documents.

