

PARTS CATALOGUE AND RELATED INFORMATION
(Completely Revised and Restyled)

MEMORANDUM OF INSTRUCTIONS

CONTENTS

This Illustrated Parts Catalogue (IPC) is prepared by the Agusta/Westland Technical Publications Department and lists the parts embodied in the S6165-63101 Cylinder Retracting series

RAF vocabulary section 26SH has been allotted for spare parts which are peculiar to this airframe.

DEMANDS

Parts are to be demanded under the vocabulary section quoted in the above paragraph, except where the catalogue shows that a part is held under a different vocabulary section. The demand must quote the appropriate vocabulary section and reference number for each item. For UK items where a NATO stock number is quoted but no vocabulary section and class of equipment, this item has not been provisioned as a spare and must be demanded in the same manner as an unreferenced item. Unreferenced parts are not normally provisioned as spares and demands for such items must quote the appropriate vocabulary section and makers part number. The location of each part within the equipment should be clearly indicated.

Parts referenced by a NATO number with the USA as the country of origin (i.e. the fifth and sixth digits are -00- or -01-) are to be demanded under the full thirteen digit NATO reference number only.

Demands are to be prepared in accordance with the procedure laid down in AP830 Volume 1 (RAF - Army) or BR96 (Navy).

CLASSIFICATION

The class of equipment is indicated by a single letter as laid down in AP830 Volume 1 or BR96. (See Part/Reference number indices)

LOCAL MANUFACTURE

Parts annotated 'L' (See Part/Reference number indices, ICY column) are to be manufactured from local resources. If the manufacture of such items is beyond the capacity of the unit, the demand is to be endorsed 'Unable to manufacture locally'.

UNITS PER ASSEMBLY

The number quoted is the quantity required per next higher assembly in the position shown except attaching parts which quote the quantity required to attach one item. The letters 'AR' indicate the quantity is as required. When an item is listed for reference purposes only, the letters 'RF' are quoted. In some instances, e.g. tube, the quantity shown in the units per assembly column is the normal cutting length in inches.

CONDITIONS OF SUPPLY (interchangeability (CY))

Where operations such as reaming, drilling or trimming are necessary during the fitting of a spare the code number '1' is quoted. (See Part/Reference number indices).

MODIFICATIONS

Modifications are quoted in the nomenclature column against the item or items affected.

AMENDMENT INDICATORS

At the extremes of each line of data on the text pages, one of the following may appear.

N against the first line of text indicates the complete Figure is NEW

A indicates the item has been ADDED

R indicates the item has been REVISED

ILLUSTRATIONS

The - symbol preceding the index number in the text indicates an item that is not illustrated.

INDEX OF PART NUMBERS

The Index of Part Numbers provides a cross reference between Part and Reference numbers, and their location within the publication.

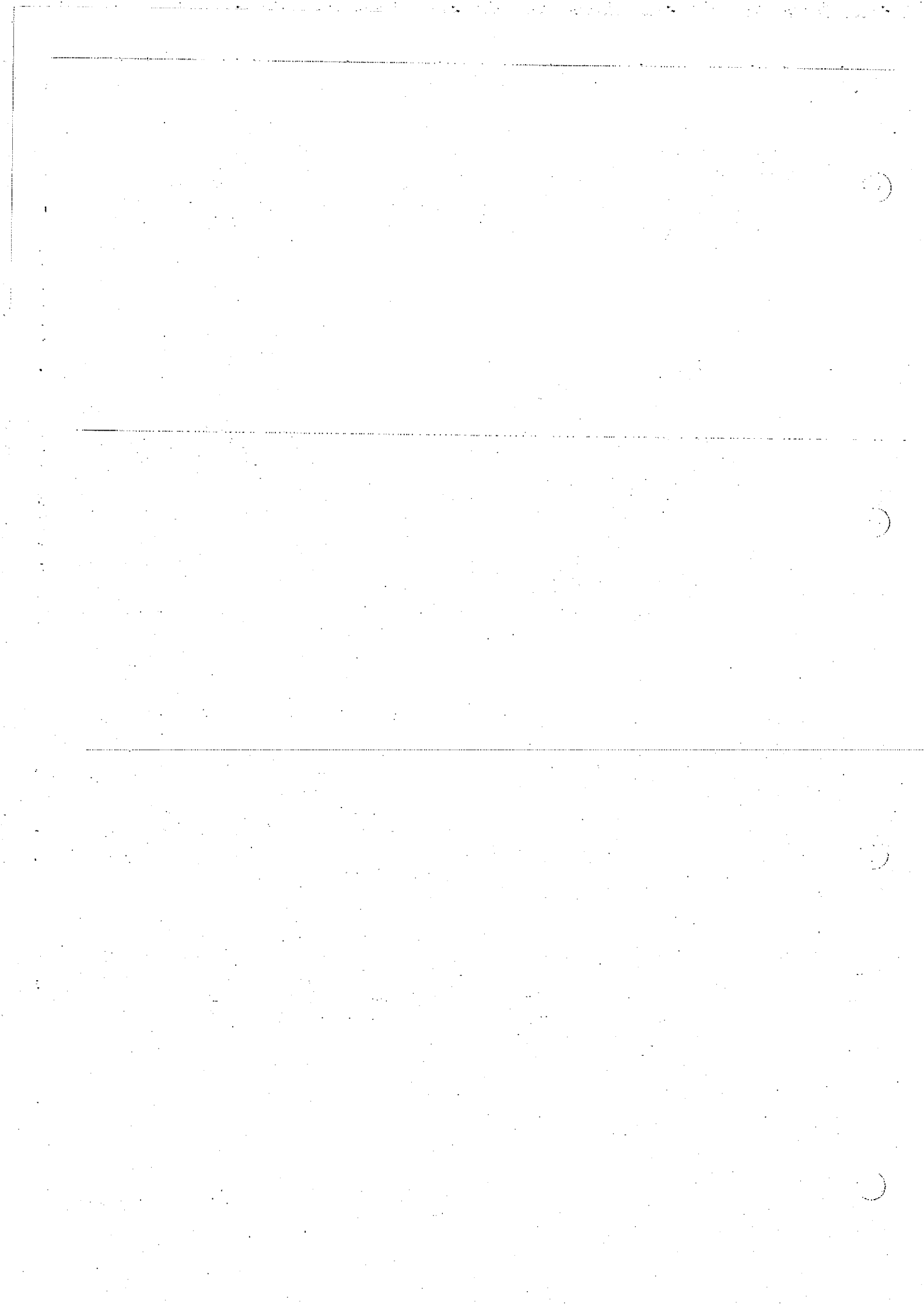
The Part Number Index is listed in alpha numeric order and provides the following information :-

Part Number	Ref. No. / NATO Code No			Chapter	Page/ Fig. Index	Haz Code	Interchangea- bility (ICY)	Class of Equip't	Qty
	Vocab	Class & Origin	NIIN						

INDEX OF REFERENCE NUMBERS

The Index of Reference Numbers is listed in numeric order, commencing with reference numbers consisting of less than seven digits. The Nato Stock Numbers (NSN) are listed in sequence from the last seven digits. The seven digit number is known as the National Item Identification Number (NIIN) and is used in the UK. Services use the Management Reference Number in conjunction with the Vocabulary Section (see DEMANDS). The following fields of information are provided :-

Ref. No. / NATO Code No			Part Number	Chapter	Page/ Fig. Index	Interchangea- bility (ICY)	Class of Equip't	Qty
Vocab	Class & Origin	NIIN						



INDEX OF REFERENCE NUMBERS

AP104B-0403-3

Ref. No./NATO Code No.			Part No.	Chapter	Page/ Fig.Index	Interchange ability (ICY)	Class of Equip't	Qty
Vocab	Class & Origin	NIIN						
	4730-01	0774893	NAS516-1A		01 048			1
	5330-00	0888719	MS28774-008		01 057		C	1
	1650-99	1100121	WD01-73-90225-101		01 058B			1
26SH	1650-99	1457024	S6165-63101-11		01 011		L	RF
26SH	4320-99	1457025	S6165-63101-12		01 011A		L	RF
26SH	3120-99	1459044	S6165-63118		01 015		C	1
26SH	5310-99	1459045	S6165-63117		01 016		C	1
26SH	1620-99	1459046	S6165-63106-3		01 022		C	1
26SH	5330-99	1459047	S6165-63119-1		01 023		C	1
26SH	1620-99	1459048	S6165-63106-5		01 025		C	1
26SH	5310-99	1459050	S6165-63115		01 029		C	1
26SH	1620-99	1459051	S6165-63103		01 030		C	1
26SH	5365-99	1459052	S1565-61317		01 032		C	1
26SH	5365-99	1459053	S1565-61308		01 031		C	1
26SH	1620-99	1459054	S6165-63109		01 037		C	1
26SH	5310-99	1459055	S6165-63114		01 040		C	1
26SH	5310-99	1459056	S1565-90120		01 043		C	1
26SH	4320-99	1459057	S6165-63104		01 046		C	1
26SH	1620-99	1459058	S6165-63102-1		01 047		C	1
26SH	1620-99	1459060	S6165-63111		01 051		C	1
26SH	5360-99	1459062	S6165-63113		01 059		C	1
26SH	3040-99	1459063	S6165-63108		01 062		C	1
26SH	3040-99	1459064	S6165-63110		01 063		C	1
26SH	1650-99	1459065	S6165-63105		01 066		C	1
26SH	1620-99	1461316	S6165-63102-2		01 047A		C	1
	5331-00	1716649	MS28775-223		01 044		C	1
	5310-00	1834406	AN960PD10		01 053		C	1
	3110-00	1882863	AAF216CP24		01 024		C	1
	5310-00	1887721	AN960PD6		01 013		C	1
	5330-99	2224301	R2018P5		01 056A			1
	5306-00	2742119	AN3-5A		01 020		C	2
	5310-00	2974085	NAS513-7		01 017		C	1
	1650-01	3865668	S6165-63102-3		01 049B			1
	5330-99	4084846	R4118P5		01 064A			1
	5330-99	4085282	R4087P5		01 038A			1
	5330-99	4086340	R4081P5		01 054A			1
	5330-00	5304341	MS28932-1		01 034		C	1
	5330-00	5437088	MS28774-212		01 039		C	1
	5331-00	5596182	MS28775-211		01 054		C	1
	5331-00	5793158	MS28775-008		01 056		C	1
	5331-00	5797914	MS28775-217		01 064		C	1
	5331-00	5797927	MS28775-225		01 041		C	1
	5331-00	5798156	MS28775-212		01 038		C	1
	5330-00	5821544	MS28774-223		01 045		C	1
	5330-00	5821550	MS28774-225		01 042		C	1
	5330-00	5822116	MS28774-211		01 055		C	1
	5330-00	5822141	MS28774-217		01 065		C	2
	5330-00	5822150	MS28774-218		01 035		C	1
	5331-00	5840263	MS28775-218		01 036		C	1
	1650-00	6408551	MS28776M2-7		01 033		C	1
26SH	1650-99	6450673	WD01-73-90227-041		01 058A			1
5UB	5310-99	6488832	AN960PD10L		01 019		C	4
5UB	5310-99	6488832	AN960PD10L		01 061		C	1
	5310-00	6602413	MS20364D1032		01 060		C	1
	3120-00	6621968	LSS6		01 049		C	1
26SH	3040-00	7003852	S6165-63107		01 058		C	1
26SH	1650-00	7003857	S6165-63112		01 050		C	3
	5310-99	7302396	WD01-73-90226-101		01 058C			1
26SH	5365-99	7452485	S6165-63116		01 026		C	1
26SH	4820-00	7851944	16900-1		01 028		C	1
	5331-00	8080794	MS28778-8		01 027		C	1
4G	5330-99	8100685	R4162P5		01 044A			1

Amdt 15

APR 2012

PAGE 1

INDEX OF REFERENCE NUMBERS

AP104B-0403-3

Ref. No./NATO Code No.			Part No.	Chapter	Page/ Fig.Index		Interchange ability (CY)	Class of Equ't	Qty
Vocab	Class & Origin	NIIN							
	5315-00	8111270	MS20392-1C39		01	014		C	1
	5315-00	8151405	MS24665-148		01	012		C	1
	5310-00	8775797	MS21044N3		01	018		C	2
	5310-00	8775798	MS21044D3		01	052		C	1
	5310-00	9053081	MS21083D3		01	060A		C	1
2A	3120-99	9133155	RSS6		01	049A			1

Amdt 15

DETAILED PARTS LIST
CYLINDER RETRACTING LH AND RH
PART NO S6165-63101-11 AND S6165-63101-12

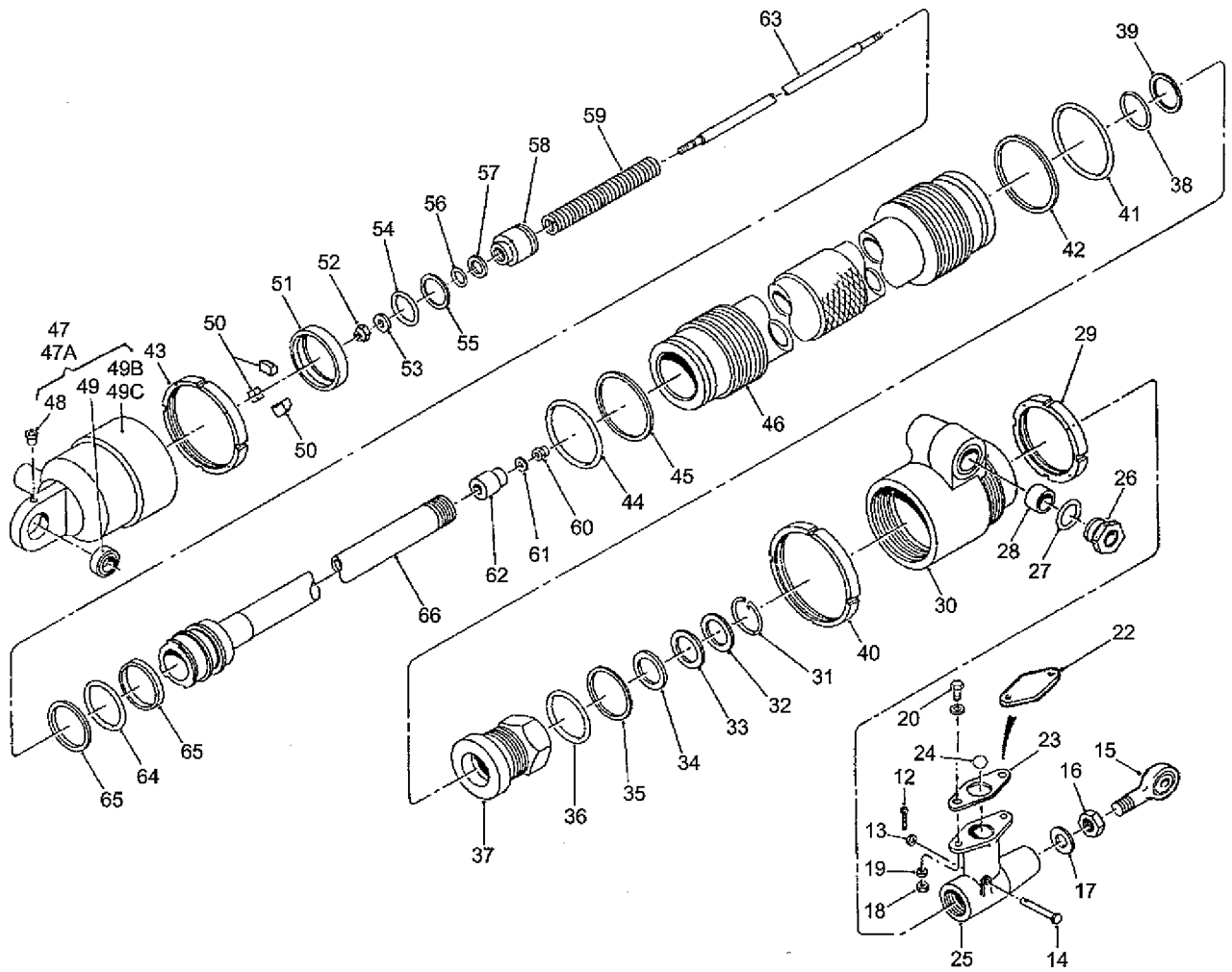


Fig 1 Cylinder retracting

SWP20145A-02

Fig. & Index No.	Part No.	Vocab/NSN	Nomenclature	Usage Code	Units per Assy.
			123456789		
- 11	S6165-63101-11	26SH 1650-991457024	CYLINDER, RETRACTING LH (K0058)	A	RF
- 11A	S6165-63101-12	26SH 4320-991457025	CYLINDER, RETRACTING RH (K0058)	B	RF
12	MS24665-148	5315-008151405	.PIN, COTTER (96906)		1
13	AN960PD6	5310-001887721	.WASHER (88044)		1
14	MS20392-1C39	5315-008111270	.PIN (96906)		1
15	S6165-63118	26SH 3120-991459044	.RODEND (K0058)		1
16	S6165-63117	26SH 5310-991459045	.NUT (K0058)		1
17	NAS513-7	5310-002974085	.WASHER (80205)		1
18	MS21044N3	5310-008775797	.NUT (96906)		2
19	AN960PD10L	5UB 5310-996488832	.WASHER (77342)		4
20	AN3-5A	5306-002742119	.BOLT (88044)		2
22	S6165-63106-3	26SH 1620-991459046	.PLATE, BLANKING (FOR TRANSIT ONLY) (K0058)		1
23	S6165-63119-1	26SH 5330-991459047	.GASKET (K0058)		1
24	AAF216CP24	3110-001882863	.BALL (07878)		1
25	S6165-63106-5	26SH 1620-991459048	.HOUSING, SWITCH (K0058)		1
26	S6165-63116	26SH 5365-997452485	.PLUG (K0058)		1
27	MS28778-8	5331-008080794	.PACKING, 'O'RING (96906)		1
28	16900-1	26SH 4820-007851944	.VALVE, CARTRIDGE (99643)		1
29	S6165-63115	26SH 5310-991459050	.NUT (K0058)		1
30	S6165-63103	26SH 1620-991459051	.CAP, REAR (PRE-MOD 1250U) (K0058)		1
- 30A	S6165-63103-101		.CAP, REAR (MOD 1250U), (PREFERRED ALTERNATIVE TO S6165-63103) (K0058)		1
R	31	S1565-61308	26SH 5365-991459053	.RING, LOCK (K0058)	1
R	32	S1565-61317	26SH 5365-991459052	.RING, RETAINING (K0058)	1
	33	MS28776M2-7	1650-006408551	.SCRAPER (96906)	1
	34	MS28932-1	5330-005304341	.FELT (96906)	1
	35	MS28774-218	5330-005822150	.RETAINER, PACKING (96906)	1
	36	MS28775-218	5331-005840263	.PACKING, PREFORMED (96906)	1
	37	S6165-63109	26SH 1620-991459054	.STOP, PISTON (K0058)	1
	38	MS28775-212	5331-005798156	.PACKING, PREFORMED (96906)	1
	38A	R4087P5	5330-994085282	.PACKING, O RING (ALTERNATIVE TO MS28775-212) (K0640)	1
	39	MS28774-212	5330-005437088	.RETAINER, BACK UP (96906)	1
	40	S6165-63114	26SH 5310-991459055	.NUT (K0058)	1
	41	MS28775-225	5331-005797927	.PACKING, 'O' RING (96906)	1
	42	MS28774-225	5330-005821550	.RETAINER, BACK-UP (96906)	1
	43	S1565-90120	26SH 5310-991459056	.NUT (K0058)	1
	44	MS28775-223	5331-001716649	.PACKING, 'O' RING (96906)	1
	44A	R4162P5	4G 5330-998100685	.PACKING, O RING (ALTERNATIVE TO MS28775-223) (K0640)	1
	45	MS28774-223	5330-005821544	.RETAINER, BACK UP (96906)	1
	46	S6165-63104	26SH 4320-991459057	.BARREL (K0058)	1
	47	S6165-63102-1	26SH 1620-991459058	.CAP, ASSY (K0058)	A
	47A	S6165-63102-2	26SH 1620-991461316	.CAP, ASSY (K0058)	B
	48	NAS516-1A	4730-010774893	.FITTING, LUBRICATION (80205)	1
	49	LSS6	3120-006621968	.BEARING (73134)	1
	- 49A	RSS6	2A 3120-999133155	.BEARING, (ALTERNATIVE TO LSS6) (K7067)	1
	49B	S6165-63102-3	1650-013865668	.CAP (78286)	A
	49C	S6165-63102-4		.CAP (K0058)	B
	50	S6165-63112	26SH 1650-007003857	.LOCK, PISTON (K0058)	3
	51	S6165-63111	26SH 1620-991459060	.RACE, LOCKING (K0058)	1
	52	MS21044D3	5310-008775798	.NUT (96906)	1
	53	AN960PD10	5310-001834406	.WASHER (88044)	1
	54	MS28775-211	5331-005596182	.RING, 'O' (96906)	1
	54A	R4081P5	5330-994086340	.PACKING, O RING (ALTERNATIVE TO MS28775-211) (K0640)	1
	55	MS28774-211	5330-005822116	.RING, BACK UP (96906)	1
	56	MS28775-008	5331-005793158	.PACKING, PREFORMED (96906)	1
	56A	R2018P5	5330-992224301	.PACKING, O RING (ALTERNATIVE TO MS28775-008) (K0640)	1

-ITEM NOT ILLUSTRATED

Amdt 15

Fig. & Index No.	Part No.	Vocab/NSN	Nomenclature	Usage Code	Units per Assy.
			123456789		
1					
57	MS28774-008	5330-000888719	.RETAINER, BACK UP (96906)		1
58	S6165-63107	26SH 3040-007003852	.CAM, LOCKING (K0058)		1
- 58A	WD01-73-90227-041	26SH 1650-996450673	.CAM, ASSY LOCKING (AMDT 0482) (K0058)		1
58B	WD01-73-90225-101	1650-991100121	.CAM (K0058)		1
58C	WD01-73-90226-101	5310-997302396	.PLATE, BACK-UP (K0058)		1
59	S6165-63113	26SH 5360-991459062	.SPRING (K0058)		1
60	MS20364D1032	5310-006602413	.NUT (96906)		1
60A	MS21083D3	5310-009053081	.NUT, (ALTERNATIVE TO MS20364D1032) (96906)		1
61	AN960PD10L	5UB 5310-996488832	.WASHER (77342)		1
62	S6165-63108	26SH 3040-991459063	.CAM (K0058)		1
63	S6165-63110	26SH 3040-991459064	.ROD, ACTUATING (K0058)		1
64	MS28775-217	5331-005797914	.PACKING, 'O' RING (96906)		1
64A	R4118P5	5330-994084846	.PACKING, O RING (ALTERNATIVE TO MS28775-217) (K0640)		1
65	MS28774-217	5330-005822141	.RETAINER, BACK UP (96906)		2
66	S6165-63105	26SH 1650-991459065	.PISTON (K0058)		1

-ITEM NOT ILLUSTRATED

This file was downloaded
from the RTFM Library.

Link: www.scottbouch.com/rtfm

Please see site for usage terms,
and more aircraft documents.

