

EJECTION SEAT
TOP ATTACHMENT 40G HARNESS ASSEMBLY

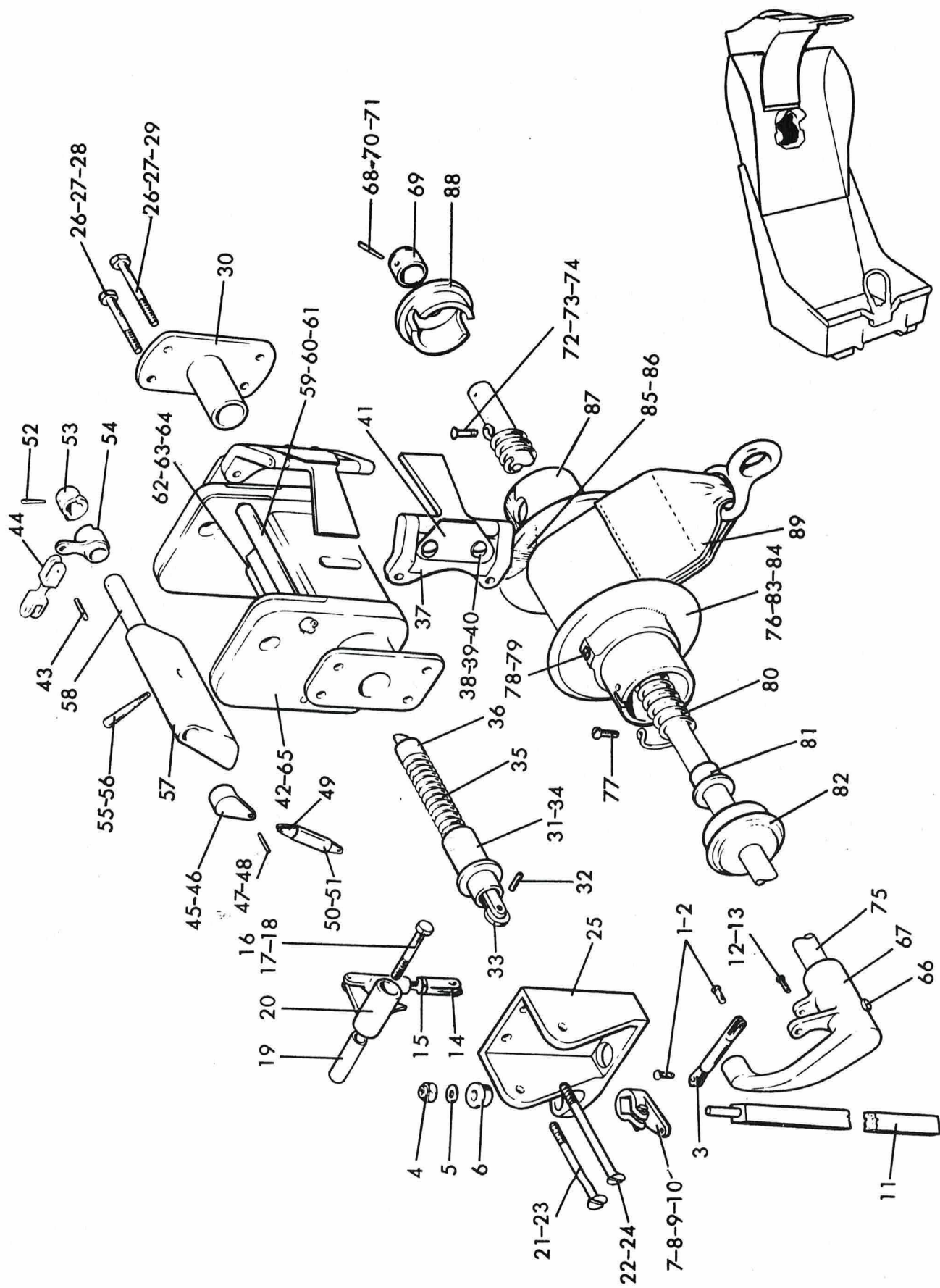


Figure 15. Top Attachment 40G Harness Assembly

EJECTION SEAT
TOP ATTACHMENT 40G HARNESS ASSEMBLY

AP 109B-0127-3A

FIG/ INDEX NO	PART NO	NOMENCLATURE						USAGE CODE	UNITS PER ASSY
		1	2	3	4	5	6		
15-	MBEU23519	Attachment - Top 40G - Assy Harness							1
-1	SP90-C4	Pin - Split - $\frac{1}{16}$ " Dia.							2
-2	SP4-Y-A2	Pin - Shackle							2
-3	MBEU11674	End - Double Fork							1
-4	AGS2002-E1	Nut - Stiff - $\frac{1}{4}$ " B.S.F. Thin							1
-5	SP13-E	Washer - $\frac{1}{4}$ " B.S.F.							1
-6	MBEU7525	Bearing - for Torsion Bar							1
-7	AGS2002-C1	Nut - Stiff - 2BA - Thin							1
-8	SP13-C	Washer							1
-9	A25-5C	Bolt - 2BA							1
-10	MBEU11530	Lever - Operating Shaft							1
-11	MBEU14163	Bar - Torsion							1
-12	SP4-Y-A2	Pin - Shackle							1
-13	SP90-C4	Pin - Split - $\frac{1}{16}$ " Dia.							1
-14	MBEU14116	End - Fork - for 40G							1
-15	A27-CT	Nut - Lock - 2BA							1
-16	AGS2002-E1	Nut - Stiff - $\frac{1}{4}$ " B.S.F. Thin							1
-17	SP13-E	Washer - $\frac{1}{4}$ " B.S.F.							1
-18	A25-14E	Bolt - $\frac{1}{4}$ " B.S.F.							1
-19	MBEU14157	Bearing - Bellcrank							1
-20	MBEU14894	Lever - Bellcrank & Fork End							1
-21	AGS2002-C1	Nut - Stiff - 2BA - Thin							4
-22	SP13-C	Washer - 2BA							4
-23	AS1242-13C	Bolt - 2BA 90° C's'k							2
-24	AS1242-17C	Bolt - 2BA 90° C's'k							2
-25	MBEU14143	Bracket - Support - Shaft							1
-26	AGS2002-C1	Nut - Stiff - 2BA							4
-27	SP13-C	Washer - 2BA							4
-28	A25-13C	Bolt - 2BA							2
-29	A25-16C	Bolt - 2BA							2
-30	MBEU6217	Spigot - End							1
-31	MBEU14145	Plunger - Assy							1
-32	MBEU6287-A	Pin - Pivot							1
-33	MBEU7533	Roller							1
-34	MBEU14140	Housing							1
-35	MBEU5172	Spring							1
-36	MBEU14141	Plunger - Locking							1

* Item not illustrated

TOP ATTACHMENT 40G HARNESS ASSEMBLY

FIG/ INDEX NO.	PART NO.	NOMENCLATURE						USAGE CODE	UNITS PER ASSY
		1	2	3	4	5	6		
15-37	MBEU 23322	2	Spreader - Assy
-38	AGS2002-B1	2	Nut - Stiff - 4BA Thin
-39	SP13-B	2	Washer - 4BA
-40	A32-B16	2	Screw - 4BA Round Head
-41	MBEU 33258	1	Spring - Leaf
-42	MBEU 19554	1	Beam - 40 'G' Assy
-43	DS9-C10	1	Pin - Indent
-44	MBEU 18712	1	Link - Connecting - Assy
-45	SP29-G6	1	Pin - Taper 1/32" Dia.
-46	MBEU 152-J5	1	Lever - Locking
-47	DS9-A8	1	Pin - Indent
-48	SP90-A2	1	Pin - Split
-49	MBEU 147-J5	1	Piston - Locking
-50	MBEU 146-J5	1	Sleeve - Locking
-51	MBEU 25773	1	Spring
-52	SP29-G6	1	Pin - Taper 3/32" Dia.
-53	MBEU 220-J5	1	Bearing - End
-54	MBEU 407-L5	1	Lever - Operating
-55	AGS2002-B1	1	Nut - Stiff - 4BA - Thin
-56	MBEU 7420	1	Pin - Taper - Special
-57	MBEU 27292	1	Lever - Snubbing
-58	MBEU 219-J5	1	Shaft - 40G - Release
-59	SP90-C7	1	Pin - Split
-60	MBEU 150-J5	1	Pin - Special - SP4
-61	MBEU 7415	1	Roller
-62	SP90-C7	1	Pin - Split
-63	MBEU 7419	1	Pin - Special - SP4
-64	MBEU 7414	1	Roller
-65	MBEU 148-J5	1	Beam - 40G
-66	SP29-H8	2	Pin - Taper 1/2" Dia.
-67	MBEU 14144	1	Lever - Harness - Release
-68	MBEU 8687	1	Pin - Taper - Threaded
-69	MBEU 14148	1	Cap - Harness - Release - Shaft
-70	AGS2002-B1	1	Nut - Stiff - 4BA - Thin
-71	MBEU 8688	1	Washer - Saddle
-72	AGS2002-B1	1	Nut - Stiff - 4BA - Thin
-73	SP13-B	1	Washer - 2BA

+ Item not illustrated

EJECTION SEAT
TOP ATTACHMENT 40G HARNESS ASSEMBLY

AP 109B-0127-3A

FIG/ INDEX NO	PART NO	NOMENCLATURE	USAGE CODE	UNITS PER ASSY
15-74	MBEU7446	Peg - Spring Locating		1
-75	MBEU14147	Shaft - Harness - Release		1
-76	MBEU29589	Drum - Assy		1
-77	MBEU8275	Screw - 4BA - Round Head		1
-78	MBEU7426	Dowel - for Drum Flange		1
-79	SP47-B	Washer - 4BA		1
-80	MBEU7427	Spring - Torsion		1
-81	MBEU29517	Bush - Spring		1
-82	MBEU8165	Bearing - For Drum		1
-83	MBEU7423	Drum - For Webbing		1
-84	MBEU7424	Flange - For Drum		1
-85	MBEU7426	Dowel - For Drum		1
-86	SP47B	Washer - 4BA		1
-87	MBEU7424	Flange - For Drum		1
-88	MBEU7425	Bearing - For Drum		1
-89	MBEU33362	Webbing - Assy		1

* Item not illustrated

This file was downloaded
from the RTFM Library.

Link: www.scottbouch.com/rtfm

Please see site for usage terms,
and more aircraft documents.

