

## Chapter 2

### DATA ON R.1964

#### LIST OF TABLES

	Table
LF unit Type 4—location of capacitors ... ..	1
LF unit Type 4—location of resistors ... ..	2
Receiver unit Type 118—location of capacitors ... ..	3
Receiver unit Type 118—location of resistors ... ..	4
Receiver unit Type 117—location of capacitors ... ..	5
Receiver unit Type 117—location of resistors ... ..	6

#### LIST OF ILLUSTRATIONS

	Fig.
Power unit Type 797—circuit ... ..	1
LF unit Type 4—component positions ... ..	2
Receiver unit Type 118—component positions ... ..	3
Receiver unit Type 117—component positions ... ..	4
LF unit Type 4—circuit ... ..	5
Receiver unit Type 118—circuit ... ..	6
Receiver unit Type 117—circuit ... ..	7

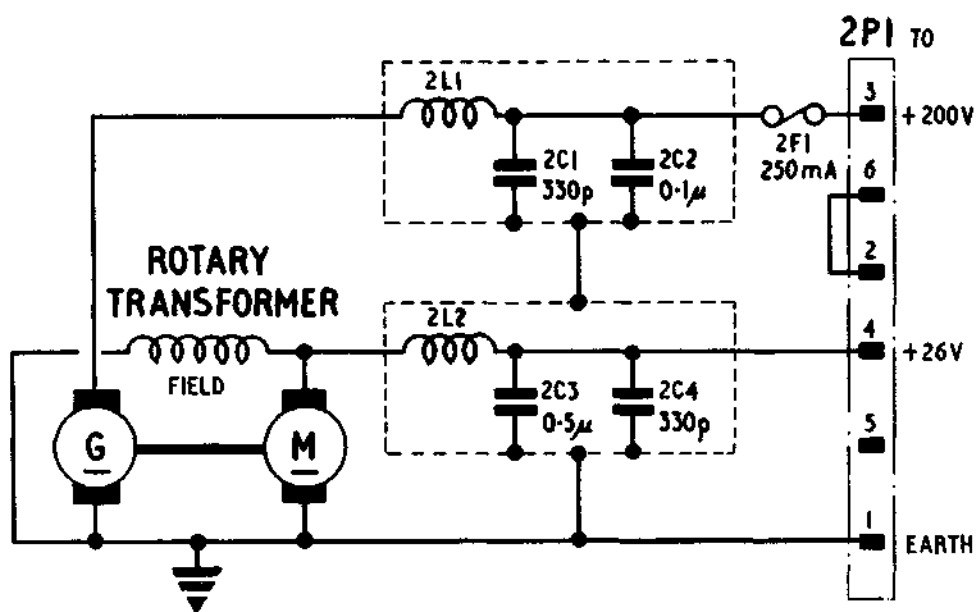


Fig. 1. Power unit Type 797—circuit

**RESTRICTED**

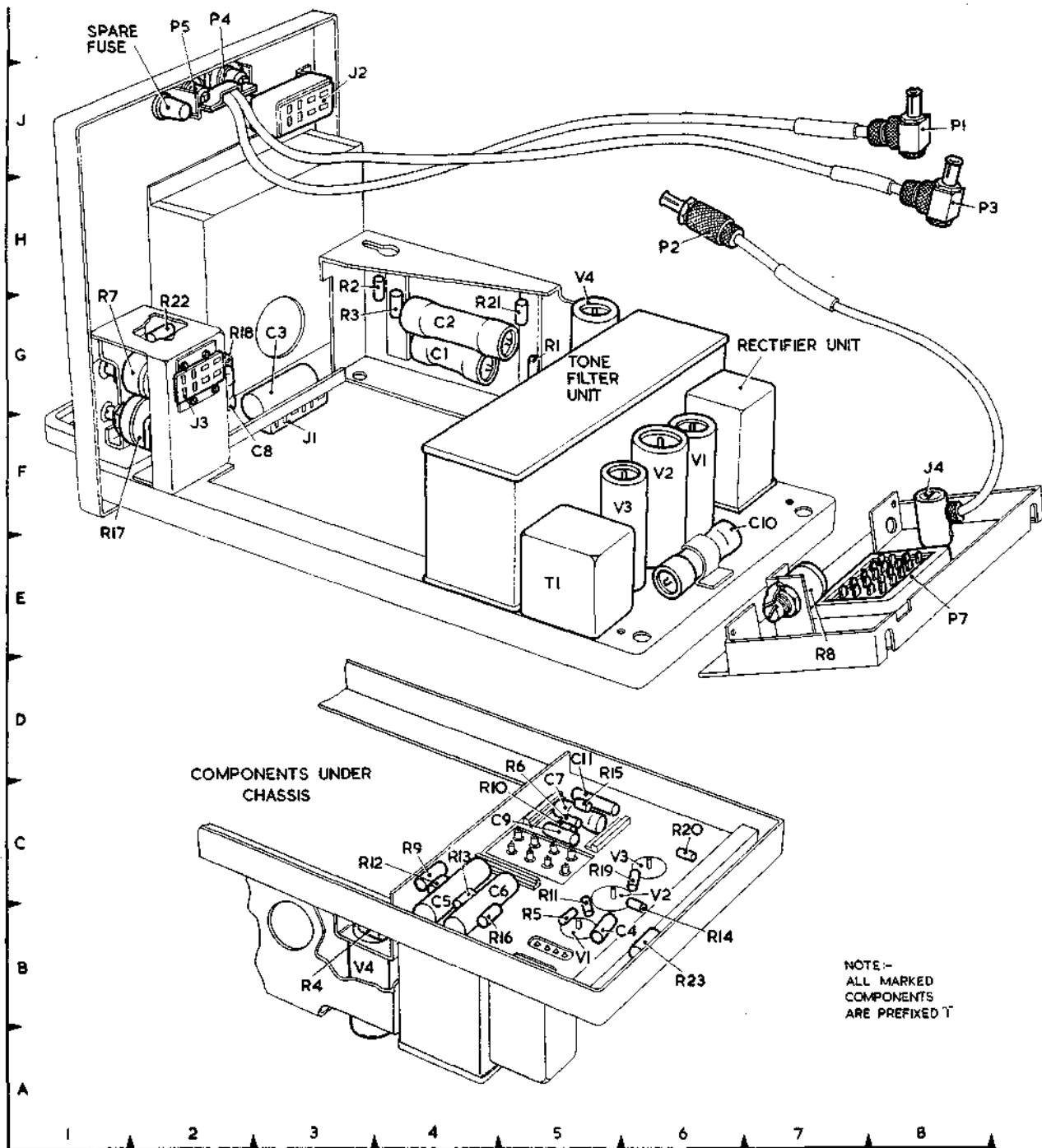


Fig. 2. LF unit Type 4—component positions

RESTRICTED

**TABLE 1**  
**LF unit Type 4—location of capacitors**

Circuit Ref.	Value	Working voltage	Tolerance $\pm\%$	Grid location on fig. 2	Stores Ref.
1C1	2.0 $\mu$	150	25	G4	Z.116314
1C2	1.0 $\mu$	350	25	G4	Z.116313
1C3	0.1 $\mu$	350	25	G3	Z.115285
1C4	1,000p	300	20	B5	
1C5	0.1 $\mu$	350	25	C4	Z.115285
1C6	0.1 $\mu$	350	25	C4	Z.115285
1C7	0.5 $\mu$	150	25	C5	Z.116308
1C8	0.1 $\mu$	150	25	G2	Z.116302
1C9	1,000p	300	20	C5	
1C10	2.0 $\mu$	150	25	E6	Z.116314
1C11	0.005 $\mu$	350	25	C5	Z.115223

**TABLE 2**  
**LF unit Type 4—location of resistors**

Circuit Ref.	Value in ohms	Rating in watts	Tolerance $\pm\%$	Grid location on fig. 2	Stores Ref.
1R1	3.3meg	$\frac{1}{4}$	10	G5	Z.223205
1R2	22,000	$\frac{1}{4}$	10	H3	Z.222172
1R3	22,000	$\frac{1}{4}$	10	G3	Z.222172
1R4	4,700	$\frac{1}{8}$	5	B3	Z.219160
1R5	1meg	$\frac{1}{4}$	10	B5	Z.223163
1R6	220	$\frac{1}{4}$	10	C5	Z.221151
1R7	10,000	$\frac{1}{10}$	20	G1	10W/18167
1R8	20,000	$\frac{1}{10}$	20	E7	10W/18166
1R9	25	7	5	C4	Z.243401
1R10	1,500	$\frac{1}{4}$	10	C5	Z.222025
1R11	470,000	$\frac{1}{4}$	10	C5	Z.223121
1R12	15,000	$\frac{1}{4}$	10	C4	Z.222151
1R13	15,000	$\frac{1}{4}$	10	C4	Z.222151
1R14	68,000	$\frac{1}{4}$	10	C6	Z.223016
1R15	1,500	$\frac{1}{4}$	10	C5	Z.222025
1R16	470,000	$\frac{1}{4}$	10	B4	Z.223121
1R17	5,000	$\frac{1}{10}$	20	F1	Z.261503
1R18	22,000	$\frac{1}{4}$	10	G2	Z.222172
1R19	1meg	$\frac{1}{4}$	10	C6	Z.223163
1R20	150	$\frac{1}{4}$	10	C6	Z.221130
1R21	3.3meg	$\frac{1}{4}$	10	G5	Z.223226
1R22	3,300	$\frac{1}{8}$	5	G2	Z.219148
1R23	3,300	$\frac{1}{8}$	5	B6	Z.219220

**RESTRICTED**



TABLE 3 (continued)

Circuit Ref.	Value	Working voltage	Tolerance $\pm$	Grid location on fig. 3	Stores Ref.
4C16	0.005 $\mu$	350	25%	B7	Z.115223
4C17	8.2p		$\frac{1}{2}$ p	D7	
4C18	0.05 $\mu$	350	25%	B6	Z.116301
4C19	0.5 $\mu$	350	25%	B2	Z.116310
4C20	0.01 $\mu$	350	25%	B4	Z.115065
4C21	0.01 $\mu$	350	25%	B4	Z.115065
4C22	0.01 $\mu$	350	25%	B5	Z.115065
4C23	1.0 $\mu$	350	25%	B4	Z.116313
4C24	1,000p	300	20%	B6	Z.132630

TABLE 4

## Receiver unit Type 118—location of resistors

Circuit Ref.	Value in ohms	Rating in watts	Tolerance $\pm$ %	Grid location on fig. 3	Stores Ref.
4R1					
4R2	150	$\frac{1}{4}$	10	B8	Z.221130
4R3	10,000	$\frac{1}{4}$	10	B8	Z.222130
4R4	2,200	$\frac{1}{2}$	10	B8	Z.222047
4R5	21	3	5	B7	Z.243402
4R6	42	3	5	B7	
4R7	27,000	$\frac{1}{4}$	10	B7	Z.222184
4R8	100	$\frac{1}{2}$	10	B7	Z.221110
4R9	27,000	$\frac{1}{4}$	10	B6	Z.222184
4R10	47	$\frac{1}{2}$	10	B7	Z.221068
4R11	200,000	$\frac{1}{4}$	10	F5	
4R12					
4R13					
4R14	100,000	$\frac{1}{4}$	10	F6	
4R15	1meg		10	E10	10W/18196
4R16	4,700	$\frac{1}{4}$	10	D9	Z.222088
4R17					
4R18	560,000	$\frac{1}{4}$	10	B3	Z.223133
4R19	180,000	$\frac{1}{4}$	10	B3	Z.223070
4R20	22,000	$\frac{1}{4}$	10	B3	Z.222172
4R21	680,000	$\frac{1}{4}$	10	B2	Z.223142
4R22	120,000	$\frac{1}{4}$	10	B2	Z.223049
4R23	470,000	$\frac{1}{4}$	10	B2	Z.223121
4R24	220	$\frac{3}{4}$	10	B5	Z.221153
4R25	360	1	5	E2	Z.243374
4R26	500	$\frac{1}{2}$	10	D2	Z.271501
4R27	4,700	$\frac{1}{2}$	10	B6	Z.222089

RESTRICTED

**TABLE 5**  
Receiver unit Type 117—location of capacitors

Circuit Ref.	Value	Working voltage	Tolerance ±	Grid location on fig. 4	Stores Ref.
3C1	(Part of coil assembly)			B7	
3C2	(Part of coil assembly)			D7	
3C3	47p	500	10%	C7	Z.132289
3C4	0.01μ	350	25%	G7	Z.115552
3C5	1,000p		20%	B7	
3C6	0.01μ	350	25%	H7	Z.115552
3C7	(Part of coil assembly)			D6	
3C8	1,000p	350	20%	G6	Z.132630
3C9	(Part of coil assembly)			B6	
3C10	330p	350	20%	C6	Z.132627
3C11	1,000p	350	20%	G5	Z.132630
3C12	1,000p		20%	B5	
3C13	1,000p	350	20%	H6	Z.132630
3C14	(Part of coil assembly)			B5	
3C15	330p	350	20%	C5	Z.132627
3C16	(Part of coil assembly)			D5	
3C17	2.2p	500	½p	C4	Z.132250
3C18	2.2p	500	½p	C8	Z.132250
3C19	330p	350	20%	D3	Z.132627
3C20	1,000p	350	20%	A1	Z.132630
3C21	1.5 to 20p	350		A1	
3C22	10p	500	10%	A1	Z.132253
3C23	4.7p	500	½p	B2	Z.132420
3C24	0.01μ	350	25%	K2	Z.115552
3C25	330p	350	20%	B1	Z.132627
3C26	47p	500	10%	B1	Z.132289
3C27	27p	500	5%	B1	Z.132279
3C28	47p	500	5%	A2	Z.132288
3C29	3.3p	500	½p	C14	
3C30	4.7p	500	½p	B15	
3C31	2.2p	500	½p	A15	
3C32	2 to 22p			A14	
3C33	330p	350	20%	D4	Z.132627
3C34	1,000p	350	20%	B4	
3C35	330p	350	20%	C4	
3C36	330p	350	20%	C4	
3C37	(Part of coil assembly)			D3	
3C38	(Part of coil assembly)			B3	
3C39	2 to 32p	350		E15	
3C40	15p	500	5%	E15	Z.132068
3C41	15p	500	5%	F14	Z.132068
3C42	2 to 32p	350		F15	
3C43	330p	350	20%	C3	Z.132627
3C44	0.01μ	350	25%	H4	Z.115552
3C45	330p	350	20%	C2	Z.132627
3C46	2 to 32p	350		F17	
3C47	15p	500	5%	F16	Z.132068
3C48	15p	500	5%	E17	Z.132068
3C49	2 to 32p	350		E17	
3C50	1,000p	350	20%	G2	Z.132630
3C51	1,000p	350	20%	B2	
3C52	330p	350	20%	B4	Z.132627
3C53	0.01μ	350	25%	H1	Z.115552
3C54	0.01μ	350	25%	J2	Z.115552
3C55	1,000p	350	20%	A2	Z.132630
3C56	8.2p	500	½p	E15	Z.132423
3C57	2 to 32p	350		J13	
3C58	22p	500	5%	J12	Z.132276
3C59	130p	350	2p	J12	
3C60	130p	350	2p	H13	
3C61	22p	500	5%	H13	Z.132276
3C62	2 to 32p	350		H12	
3C63	330p	350	20%	B6	Z.132627

**RESTRICTED**

TABLE 5 (continued)

Circuit Ref.	Value	Working voltage	Tolerance $\pm$	Grid location on fig. 4	Stores Ref.
3C64	0.01 $\mu$	350	25%	K4	Z.115552
3C65	0.01 $\mu$	350	25%	J3	Z.115552
3C66	0.01 $\mu$	350	25%	K4	Z.115552
3C67	0.01 $\mu$	350	25%	J4	Z.115552
3C68	2 to 32p	350		J15	
3C69	22p	500	5%	J14	Z.132276
3C70	130p	350	2p	J15	
3C71	130p	350	2p	H15	
3C72	22p	500	5%	H15	Z.132276
3C73	2 to 32p	350		H14	
3C74	0.01 $\mu$	350	25%	J4	Z.115552
3C75	0.01 $\mu$	350	25%	K5	Z.115552
3C76	0.01 $\mu$	350	25%	K6	Z.115552
3C77	0.01 $\mu$	350	25%	J6	Z.115552
3C78	2 to 32p	350		J17	
3C79	22p	500	5%	J16	Z.132276
3C80	130p	350	2p	J17	
3C81	130p	350	2p	H17	
3C82	22p	500	5%	H17	Z.132276
3C83	2 to 32p	350		H17	
3C84	0.01 $\mu$	350	25%	J6	Z.115552
3C85	0.01 $\mu$	350	25%	K8	Z.115552
3C86	0.01 $\mu$	350	25%	J8	Z.115552
3C87	0.01 $\mu$	350	25%	J7	Z.115552
3C88	0.01 $\mu$	350	25%	K7	Z.115552
3C89	0.01 $\mu$	350	25%	J8	Z.115552
3C90	2 to 32p	350		E13	
3C91	8.2p	350	$\frac{1}{2}$ p	E13	Z.132423
3C92	33p	500	5%	E13	Z.132282
3C93					
3C94					
3C95					
3C96	0.01 $\mu$	350	25%	J10	Z.115552
3C97	330p	350	20%	I9	Z.132627
3C98	0.05 $\mu$	250	25%	A9	Z.132627
3C99	47p	500	10%	A10	Z.132289
3C100	0.015 $\mu$	350	5%	C9	10C/18765
3C101					
3C102					
3C103					
3C104	0.1 $\mu$	250	25%	C8	Z.116303
3C105	0.01 $\mu$	350	25%	C1	Z.115552
3C106					
3C107	1,000p	350	20%	H6	Z.132630
3C108	1,000p	350	20%	H5	Z.132630
3C109	0.01 $\mu$	350	25%	J8	Z.115552
3C110	0.01 $\mu$	350	25%	K7	Z.115552
3C111	0.01 $\mu$	350	25%	K3	Z.115552
3C112	1,000p	350	20%	A4	Z.132630
3C113	0.01 $\mu$	350	25%	J9	Z.115552
3C114	330p	350	20%	B8	Z.132627
3C115	47p	500	10%	A9	Z.132289
3C116	330p	350	20%	B1	Z.132627
3C117	1,000p	350	20%	H3	Z.132630
3C118	(Part of coil assembly)			C2	
3C119	8.2p	500	$\frac{1}{2}$ p	F17	Z.132423
3C120	0.1 $\mu$	150	25%	A6	

RESTRICTED

**TABLE 6**  
Receiver unit Type 117—location of resistors

Circuit Ref.	Value in ohms	Rating in watts	Tolerance ± %	Grid location on fig. 4	Stores Ref.
3R1	10,000	$\frac{1}{4}$	10	C7	Z.222130
3R2	680	$\frac{1}{4}$	10	D8	Z.221214
3R3	150	$\frac{1}{4}$	10	D7	Z.221130
3R4	10,000	$\frac{1}{4}$	10	C7	Z.222130
3R5	4,700	$\frac{1}{2}$	10	C7	Z.222089
3R6	10,000	$\frac{1}{4}$	10	C6	Z.222130
3R7	150	$\frac{1}{4}$	10	D5	Z.221130
3R8	10,000	$\frac{1}{4}$	10	C6	Z.222130
3R9	1,000	$\frac{1}{4}$	10	C5	Z.222004
3R10	680	$\frac{1}{4}$	10	D5	Z.221214
3R11	4,700	$\frac{1}{2}$	10	B2	Z.222089
3R12	5,600	$\frac{1}{2}$	10	A1	Z.222101
3R13	22,000	$\frac{1}{2}$	10	A2	Z.222173
3R14	22,000	$\frac{1}{4}$	10	A2	Z.222172
3R15	1,500	$\frac{1}{4}$	10	A2	Z.222025
3R16	150	$\frac{1}{4}$	10	B1	Z.221130
3R17	27,000	$\frac{1}{2}$	10	C4	Z.222185
3R18	1,000	$\frac{1}{4}$	10	B3	Z.222004
3R19	150	$\frac{1}{4}$	10	D4	Z.221130
3R20	4,700	$\frac{1}{2}$	10	C3	Z.222089
3R21	1,000	$\frac{1}{4}$	10	B7	Z.222004
3R22	1,000	$\frac{1}{4}$	10	C3	Z.222004
3R23	150	$\frac{1}{4}$	10	D4	Z.221130
3R24	220,000	$\frac{1}{4}$	10	D2	Z.221151
3R25	22,000	$\frac{1}{2}$	10	D2	Z.222173
3R26	56,000	$\frac{1}{2}$	10	C2	Z.223008
3R27	100	$\frac{1}{4}$	10	D2	Z.221109
3R28	4,700	$\frac{1}{4}$	10	C1	Z.222088
3R29	1,000	$\frac{1}{4}$	10	B2	Z.222004
3R30	1,000	$\frac{1}{4}$	10	B6	Z.222004
3R31	56,000	$\frac{1}{2}$	10	A3	Z.223008
3R32	150	$\frac{1}{4}$	10	A3	Z.221130
3R33	100,000	$\frac{1}{8}$	5	A3	Z.219256
3R34	4,700	$\frac{1}{2}$	10	B3	Z.222089
3R35	100,000	$\frac{1}{8}$	5	A5	Z.219256
3R36	100,000	$\frac{1}{8}$	5	A7	Z.219256
3R37	27,000	$\frac{1}{4}$	10	B14	Z.221163
3R38	100,000	$\frac{1}{8}$	5	A4	Z.219256
3R39	22,000	$\frac{1}{2}$	10	B4	Z.222173
3R40	56,000	$\frac{1}{2}$	10	A4	Z.223008
3R41	390	$\frac{1}{4}$	10	A4	Z.221184
3R42	4,700	$\frac{1}{4}$	10	B4	Z.222088
3R43	100,000	$\frac{1}{8}$	5	A6	Z.219256
3R44	56,000	$\frac{1}{2}$	10	A4	Z.223008
3R45	390	$\frac{1}{4}$	10	A6	Z.221184
3R46	22,000	$\frac{1}{2}$	10	B6	Z.222173
3R47	4,700	$\frac{1}{4}$	10	B7	Z.222088
3R48	100,000	$\frac{1}{8}$	5	B8	Z.219256

**RESTRICTED**

TABLE 6 (continued)

Circuit Ref.	Value in ohms	Rating in watts	Tolerance ± %	Grid location on fig. 4	Stores Ref.
3R49	390	$\frac{1}{4}$	10	A8	Z.221184
3R50	100,000	$\frac{1}{4}$	10	A6	Z.223037
3R51	680,000	$\frac{1}{4}$	10	B9	Z.223142
3R52	5,600	$\frac{1}{2}$	10	A8	Z.222101
3R53	47,000	$\frac{1}{4}$	10	B8	Z.222214
3R54	15,000	$\frac{1}{4}$	10	B8	Z.222151
3R55	390	$\frac{1}{4}$	10	B8	Z.221184
3R56	4,700	$\frac{1}{2}$	10	B9	Z.222089
3R57	150,000	$\frac{1}{8}$	5	A10	Z.219286
3R58					
3R59	2,200	$\frac{1}{4}$	10	C8	Z.222046
3R60	100,000	$\frac{1}{4}$	10	C1	Z.223037
3R61	680,000	$\frac{1}{4}$	10	A9	Z.223142
3R62	470,000	$\frac{1}{4}$	10	A10	Z.223121
3R63	10,000	$\frac{1}{4}$	10	A8	Z.222130
3R64	270,000	$\frac{1}{4}$	10	B9	Z.223091
3R65	100,000	$\frac{1}{2}$	5	B10	Z.219256
3R66	100,000	$\frac{1}{10}$	20	C10	Z.262173
3R67	100,000	$\frac{1}{10}$	20	D10	Z.262173
3R68					
3R69					
3R70	47,000	$\frac{1}{8}$	5	C9	Z.219232
3R71	100,000	$\frac{1}{4}$	10	A4	Z.223037
3R72	100,000	$\frac{1}{4}$	10	A4	Z.223037
3R73					
3R74	220,000	$\frac{1}{8}$	5	B9	Z.219280
3R75					
3R76	4,700	$\frac{1}{4}$	10	C8	Z.222088
3R77	62	4	5	A10	Z.243339
3R78					
3R79	1meg	$\frac{1}{4}$	10	B10	Z.223163

RESTRICTED

## Chapter 3

### DATA ON R.1965

#### LIST OF TABLES

	<i>Table</i>
<i>RF unit Type 74—location of capacitors</i> ... ..	1
<i>RF unit Type 74—location of resistors</i> ... ..	2
<i>LF unit Type 5—location of capacitors</i> ... ..	3
<i>LF unit Type 5—location of resistors</i> ... ..	4
<i>Receiver unit Type 119—location of capacitors</i> ... ..	5
<i>Receiver unit Type 119—location of resistors</i> ... ..	6

#### LIST OF ILLUSTRATIONS

	<i>Fig.</i>
<i>RF unit Type 74—component positions</i> ... ..	1
<i>LF unit Type 5—component positions</i> ... ..	2
<i>Receiver unit Type 119—component positions</i> ... ..	3
<i>RF unit Type 74—circuit</i> ... ..	4
<i>LF unit Type 5—circuit</i> ... ..	5
<i>Receiver unit Type 119—circuit</i> ... ..	6

**RESTRICTED**

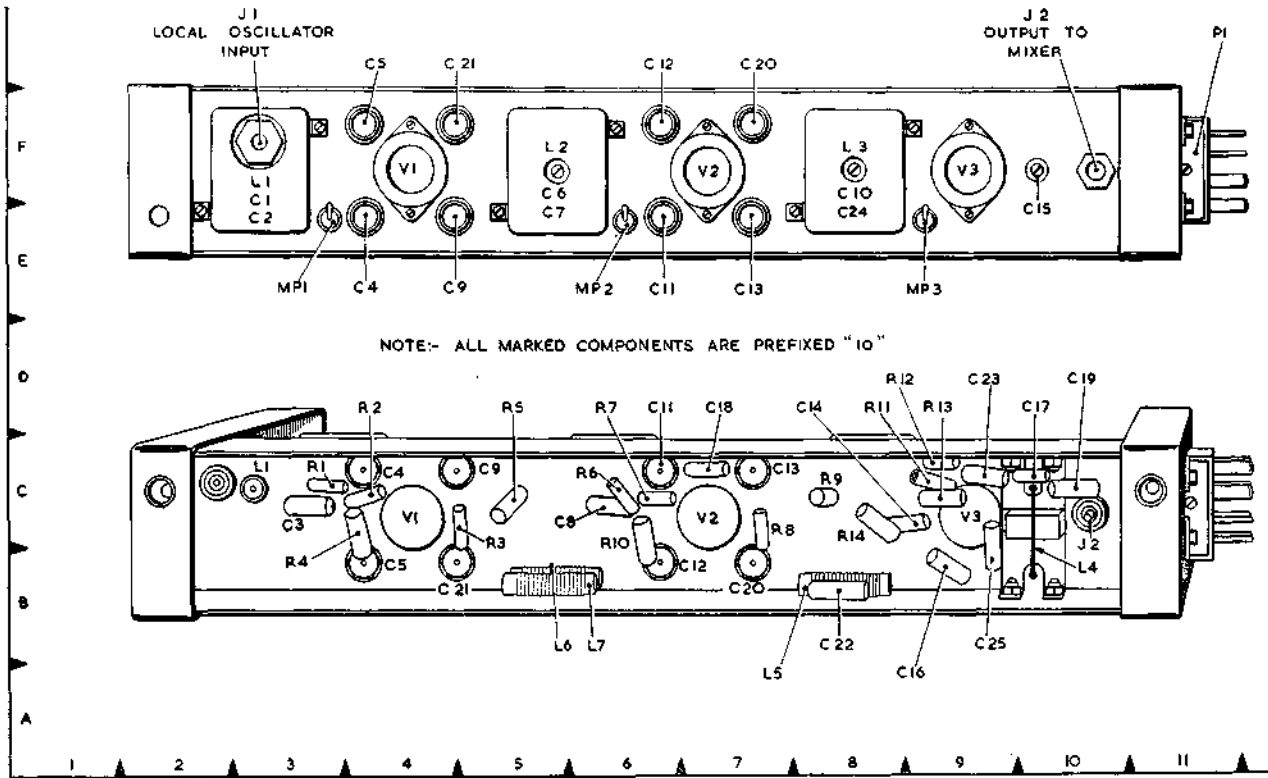


Fig. 1. RF unit Type 74—component positions

TABLE 1  
RF unit Type 74—location of capacitors

Circuit Ref.	Value in picofarads	Working voltage	Tolerance $\pm$	Grid location on fig. 2	Stores Ref.
10C1	1.5 to 21.5			F3	
10C2	8.2	500	$\frac{1}{2}$ p	F3	
10C3	47	500	10%	C3	Z.132289
10C4	1,000	350	20%	E4	Z.132630
10C5	1,000	350	20%	F4	Z.132630
10C6	8.2	500	$\frac{1}{2}$ p	F5	
10C7	1.5 to 20			F5	
10C8	47	500	10%	C6	Z.132289
10C9	1,000	350	20%	E4	Z.132630
10C10	1.5 to 21.5			F8	
10C11	1,000	350	20%	E6	Z.132630
10C12	1,000	350	20%	F6	Z.132630
10C13	1,000	350	20%	E7	Z.132630
10C14	47	500	10%	C9	Z.132289
10C15	1.5 to 8			F10	
10C16	330	350	20%	B9	Z.132627
10C17	33	500	10%	C10	Z.132283

RESTRICTED

TABLE 1 (continued)

Circuit Ref.	Value in picofarads	Working voltage	Tolerance ±	Grid location on fig. 2	Stores Ref.
10C18	1,000	350	20%	C7	Z.132630
10C19	47	500	10%	C10	Z.132289
10C20	1,000	350	20%	F7	Z.132630
10C21	1,000	350	20%	F5	Z.132630
10C22	1,000	350	20%	B8	Z.132630
10C23	33	500	10%	C9	Z.132283
10C24	100	500	10%	F8	
10C25	330	350	20%	B9	Z.132627

TABLE 2  
RF unit Type 74—location of resistors

Circuit Ref.	Value in ohms	Rating in watts	Tolerance ± %	Grid location on fig. 1	Stores Ref.
10R1	47,000	$\frac{1}{4}$	10	C3	Z.222214
10R2	680	$\frac{1}{4}$	10	C4	Z.221214
10R3	150	$\frac{1}{4}$	10	C4	Z.221130
10R4	27,000	$\frac{1}{2}$	10	C4	Z.222185
10R5	4,700	$\frac{1}{2}$	10	C5	Z.222089
10R6	47,000	$\frac{1}{4}$	10	C6	Z.222214
10R7	680	$\frac{1}{4}$	10	C6	Z.221214
10R8	150	$\frac{1}{4}$	10	C7	Z.221130
10R9	4,700	$\frac{1}{2}$	10	C8	Z.222089
10R10	27,000	$\frac{1}{2}$	10	B6	Z.222185
10R11	47,000	$\frac{1}{4}$	10	C9	Z.222214
10R12	680	$\frac{1}{4}$	10	C9	Z.221214
10R13	4,700	$\frac{1}{2}$	10	C9	Z.222089
10R14	27,000	$\frac{1}{2}$	10	C8	Z.222185

RESTRICTED



**TABLE 3**  
**LF unit Type 5—location of capacitors**

Circuit Ref.	Value	Working voltage	Tolerance ± %	Grid location on fig. 2	Stores Ref.
9C1					
9C2	0·1 $\mu$	350	25	C4	Z.115285
9C3	0·1 $\mu$	350	25	C6	Z.115285
9C4	2·0 $\mu$	150	25	E6	Z.116314
9C5	0·1 $\mu$	350	25	C6	Z.115285
9C6	0·1 $\mu$	350	25	C5	Z.115285
9C7	0·002 $\mu$	500	25	C5	Z.115034
9C8	1·0 $\mu$	350	25	G4	Z.116313
9C9	1·0 $\mu$	350	25	H4	Z.116313

**TABLE 4**  
**LF unit Type 5—location of resistors**

Circuit Ref.	Value in ohms	Rating in watts	Tolerance ± %	Grid location on fig. 2	Stores Ref.
9R1	5,000		20	F1	Z.261503
9R2	20,000		20	E7	10W/18166
9R3	2·2meg	$\frac{1}{4}$	10	C4	Z.223205
9R4	2,700	$\frac{1}{4}$	10	C6	Z.222058
9R5	27,000	$\frac{1}{4}$	10	C4	Z.222184
9R6	47,000	$\frac{1}{4}$	10	G3	Z.222214
9R7	47,000	$\frac{1}{4}$	10	H3	Z.222214
9R8	10,000		20	G1	10W/18167
9R9	3·3meg	$\frac{1}{4}$	10	C5	Z.223226
9R10	470,000	$\frac{1}{4}$	10	C4	Z.223121
9R11	1meg	$\frac{1}{4}$	10	B4	Z.223163
9R12	3,300	$\frac{1}{8}$	5	B6	Z.219148
9R13	2·2meg	$\frac{1}{4}$	10	C5	Z.223205
9R14	220,000	$\frac{1}{4}$	10	C6	Z.223079
9R15	47,000	$\frac{1}{4}$	10	C6	Z.222214
9R16	2·2meg	$\frac{1}{4}$	10	C5	Z.223205
9R17	240	$\frac{1}{8}$	5	B4	Z.219067
9R18	22,000	$\frac{1}{4}$	10	B5	Z.222172
9R19	3,300	$\frac{1}{8}$	5	G2	Z.219148
9R20	3·3meg	$\frac{1}{4}$	10	C5	Z.223226
9R21	21	2	5	G3	Z.243317
9R22	21	2	5	G3	Z.243317

**RESTRICTED**

**TABLE 5**  
Receiver unit Type 119—location of capacitors

Circuit Ref.	Value	Working voltage	Tolerance ±	Grid location on fig. 3	Stores Ref.
8C1	1.5 to 8p			H5	
8C2	39p	500	10%	C5	Z.132286
8C3	1.5 to 8p			J5	
8C4	1,000p		20%	C3	10C/18616
8C5	330p	500	5%	C4	Z.132316
8C6	39p	500	5%	C4	Z.132286
8C7	1.5 to 8p			H4	
8C8	1.5 to 8p			H4	
8C9	1.5 to 8p			D3	
8C10	18p	500	½p	J14	Z.132431
8C11	2 to 32p			J13	
8C12	15p	500	5%	J14	Z.132271
8C13	39p	500	5%	C3	Z.132285
8C14	82p	500	½p	J13	Z.132423
8C15	2 to 32p			J14	
8C16	47p	500	10%	C3	Z.132289
8C17	1,000p	350	20%	H2	Z.132630
8C18	1,000p	350	20%	H2	Z.132630
8C19	1,000p	350	20%	J2	Z.132630
8C20	15p	500	½p	J13	Z.132271
8C21	1,000p		20%	C3	10C/18686
8C22	2 to 32p			J11	
8C23	15p	500	½p	J11	Z.132271
8C24	1,000p		20%	B3	10C/18686
8C25					
8C26	15p	500	½p	J12	Z.132271
8C27	2 to 32p			J11	
8C28	1,000p	350	20%	K2	Z.132630
8C29	0.01μ	350	25%	J2	Z.115625
8C30	15p	500	5%	J12	Z.132430
8C31	0.01μ	350	25%	J3	Z.115625
8C32	4.7p	500	½p	B3	Z.132430
8C33	2 to 32p			F16	
8C34	47p	500	5%	F15	Z.132288
8C35	27p	350	2%	F15	
8C36	27p	350	2%	E16	
8C37	47p	500	5%	E16	Z.132288
8C38	2 to 32p			E16	
8C39	330p	350	20%	B4	Z.132627
8C40	3.3p	500	5%	J11	Z.132419
8C41	0.01μ	350	25%	K4	Z.115552
8C42	1,000p	350	20%	K4	Z.132630
8C43	0.01μ	350	25%	J4	Z.115552
8C44	0.01μ	350	25%	J4	Z.115552
8C45	2 to 32p			F14	
8C46	47p	500	5%	F13	Z.132288
8C47	27p	350	2%	F14	
8C48	27p	350	2%	E14	
8C49	47p	500	5%	E14	Z.132288
8C50					
8C51	2 to 32p			E14	
8C52	330p	350	20%	B5	Z.132627
8C53	0.01μ	350	25%	K5	Z.115552
8C54	1,000p	350	20%	K6	Z.132630
8C55	0.01μ	350	25%	J5	Z.115552
8C56	0.01μ	350	25%	J6	Z.115552
8C57	2 to 32p			F12	
8C58	47p	500	5%	F12	Z.132288
8C59	27p	350	2%	F12	
8C60					
8C61	27p	350	2%	E13	
8C62	47p	500	5%	E12	Z.132288
8C63	2 to 32p			E12	

**RESTRICTED**

TABLE 5 (continued)

Circuit Ref.	Value	Working voltage	Tolerance $\pm$	Grid location on fig. 3	Stores Ref.
8C64	330p	350	20%	B7	Z.132627
8C65	0.01 $\mu$	350	25%	K7	Z.115552
8C66	1,000p	350	20%	K7	Z.132630
8C67	0.01 $\mu$	350	25%	J7	Z.115552
8C68	0.01 $\mu$	350	25%	J8	Z.115552
8C69	2 to 32p			F11	
8C70					
8C71	47p	500	5%	F10	Z.132288
8C72	27p	350	2%	F10	
8C73	27p	350	2%	E11	
8C74	47p	500	5%	E10	Z.132288
8C75	2 to 32p			E10	
8C76	0.01 $\mu$	350	25%	C6	Z.115552
8C77	1,000p	350	20%	C9	Z.132630
8C78	0.01 $\mu$	350	25%	J8	Z.115552
8C79	0.01 $\mu$	350	25%	H8	Z.115552
8C80					
8C81	330p	350	20%	C8	Z.132627
8C82	1,000p	350	20%	H8	Z.132630
8C83	0.01 $\mu$	350	25%	H8	Z.115552
8C84	0.01 $\mu$	350	25%	J8	Z.115552
8C85	2 to 32p			J16	
8C86	47p	500	5%	J15	Z.132288
8C87	47p	500	10%	C7	Z.132288
8C88	27p	350	2%	J15	
8C89	18p	500	5%	J16	Z.132273
8C90					
8C91	2 to 32p			J16	
8C92	330p	350	20%	J7	Z.132627
8C93	1,000p	350	20%	D7	Z.132630
8C94	0.01 $\mu$	350	25%	H7	Z.115552
8C95	0.01 $\mu$	350	25%	C6	Z.115552
8C96	1,000p	350	20%	A3	Z.132630
8C97	1,000p	350	20%	B13	Z.132630
8C98	1.5 to 20p			A12	
8C99	330p	350	20%	C13	Z.132627
8C100	13p	500	$\frac{1}{2}$ p	B13	Z.132244
8C101	47p	500	5%	B14	Z.132288
8C102	12p	500	$\frac{1}{2}$ p	C13	Z.132244
8C103	330p	350	20%	C13	Z.132627
8C104	0.01 $\mu$	350	25%	J7	Z.115552
8C105	330p	350	20%	B4	Z.132627
8C106	0.01 $\mu$	350	25%	J6	Z.115552
8C107	0.01 $\mu$	350	25%	J2	Z.115552
8C108	0.01 $\mu$	350	25%	D9	Z.115552
8C109	0.01 $\mu$	350	25%	H6	Z.115552
8C110					
8C111	0.01 $\mu$	350	25%	K8	Z.115552
8C112	0.01 $\mu$	350	25%	K8	Z.115552
8C113	0.01 $\mu$	350	25%	K3	Z.115552
8C114	330p	350	20%	C13	Z.132627

RESTRICTED

**TABLE 6**  
Receiver unit Type 119—location of resistors

Circuit Ref.	Value in ohms	Rating in watts	Tolerance $\pm$ %	Grid location on fig. 3	Stores Ref.
8R1	150	$\frac{1}{4}$	10	C5	Z.221130
8R2	1,000	$\frac{1}{4}$	10	B3	Z.222004
8R3	4,700	$\frac{1}{2}$	10	C4	Z.222089
8R4	2,200	$\frac{1}{4}$	10	D4	Z.222046
8R5	680	$\frac{1}{4}$	10	D4	Z.221214
8R6	1,000	$\frac{1}{4}$	10	B3	Z.222004
8R7	22,000	$\frac{1}{2}$	10	C2	Z.222173
8R8	4,700	$\frac{1}{2}$	10	C2	Z.222089
8R9	56,000	$\frac{1}{2}$	10	C2	Z.223008
8R10					
8R11	220,000	$\frac{1}{4}$	10	C2	Z.223079
8R12	120	$\frac{1}{4}$	10	C2	Z.221121
8R13	22,000	$\frac{1}{2}$	10	B3	Z.222173
8R14	4,700	$\frac{1}{2}$	10	B3	Z.222089
8R15					
8R16	150	$\frac{1}{4}$	10	B2	Z.221130
8R17					
8R18					
8R19	22,000	$\frac{1}{8}$	5	B3	Z.219208
8R20					
8R21	100,000	$\frac{1}{2}$	10	A4	Z.223037
8R22	22,000	$\frac{1}{2}$	10	B4	Z.222173
8R23	4,700	$\frac{1}{2}$	10	B5	Z.222089
8R24	22,000	$\frac{1}{8}$	5	B4	Z.219208
8R25	56,000	$\frac{1}{2}$	10	A4	Z.223008
8R26	390	$\frac{1}{4}$	10	A4	Z.221184
8R27	22,000	$\frac{1}{8}$	5	B5	Z.219208
8R28	100,000	$\frac{1}{4}$	10	A5	Z.223037
8R29	22,000	$\frac{1}{2}$	10	B5	Z.222173
8R30					
8R31	4,700	$\frac{1}{2}$	10	B6	Z.222089
8R32	22,000	$\frac{1}{8}$	5	B6	Z.219208
8R33	56,000	$\frac{1}{2}$	10	A6	Z.223008
8R34	390	$\frac{1}{4}$	10	A6	Z.221184
8R35	22,000	$\frac{1}{8}$	5	B6	Z.219208
8R36	100,000	$\frac{1}{4}$	10	A7	Z.223037
8R37	22,000	$\frac{1}{2}$	10	B7	Z.222173
8R38	4,700	$\frac{1}{2}$	10	B8	Z.222089
8R39	22,000	$\frac{1}{8}$	5	B7	Z.219208
8R40					
8R41	56,000	$\frac{1}{2}$	10	A7	Z.223008
8R42	120	$\frac{1}{4}$	10	B8	Z.221121
8R43	5,000	$\frac{1}{2}$	10	B8	Z.272001
8R44	22,000	$\frac{1}{8}$	5	B9	Z.219208
8R45	27,000	$\frac{1}{2}$	10	C8	Z.222185
8R46	4,700	$\frac{1}{2}$	10	B8	Z.222089
8R47	4,700	$\frac{1}{2}$	10	C8	Z.222089
8R48	22,000	$\frac{1}{8}$	5	9B	Z.219208

**RESTRICTED**

TABLE 6 (continued)

Circuit Ref.	Value in ohms	Rating in watts	Tolerance $\pm$ %	Grid location on fig. 3	Scores Ref.
8R49	470,000	$\frac{1}{4}$	10	C6	Z.223121
8R50					
8R51	150	$\frac{1}{4}$	10	C8	Z.221130
8R52	27,000	$\frac{1}{2}$	10	C8	Z.222185
8R53	4,700	$\frac{1}{2}$	10	C7	Z.222089
8R54	27,000	$\frac{1}{4}$	10	C8	Z.222184
8R55	150	$\frac{1}{4}$	10	D8	Z.221130
8R56					
8R57	430,000	$\frac{1}{8}$	5	D9	Z.219301
8R58					
8R59	47,000	$\frac{1}{4}$	10	D7	Z.222214
8R60					
8R61	100,000	$\frac{1}{4}$	10	D7	Z.223037
8R62	680	$\frac{1}{4}$	10	D7	Z.221214
8R63	22,000	$\frac{1}{8}$	5	C7	Z.219208
8R64					
8R65	470,000	$\frac{1}{4}$	10	D6	Z.223121
8R66	4,700	$\frac{1}{2}$	10	B2	Z.222089
8R67	4,700	$\frac{1}{2}$	10	B13	Z.222089
8R68	22,000	$\frac{1}{2}$	10	B14	Z.222173
8R69	150	$\frac{1}{4}$	10	C13	Z.221130
8R70	27,000	$\frac{1}{4}$	10	C13	Z.222184
8R71	1,500	$\frac{1}{4}$	10	B14	Z.222025
8R72	22,000	$\frac{1}{4}$	10	B14	Z.222172
8R73	62	2	5	D9	Z.243339
8R74	62	2	5	A7	Z.243339

RESTRICTED



This file was downloaded from the RTFM Library.

Link: [www.scottbouch.com/rtfm](http://www.scottbouch.com/rtfm)

Please see site for usage terms, and more aircraft documents.

