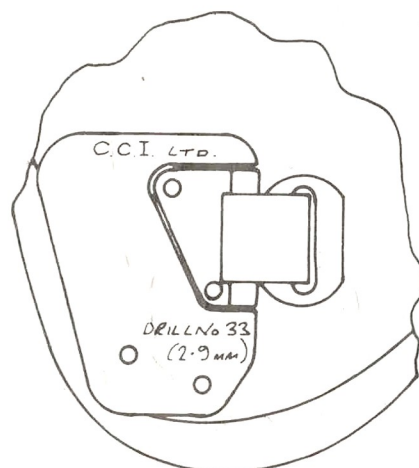
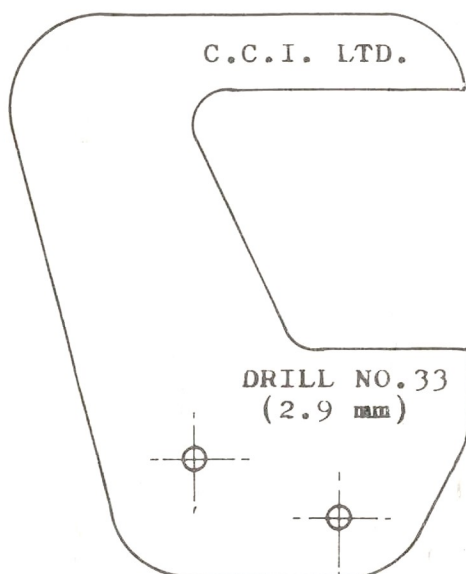


DRG No.: 2700526

THIRD ANGLE PROJECTION

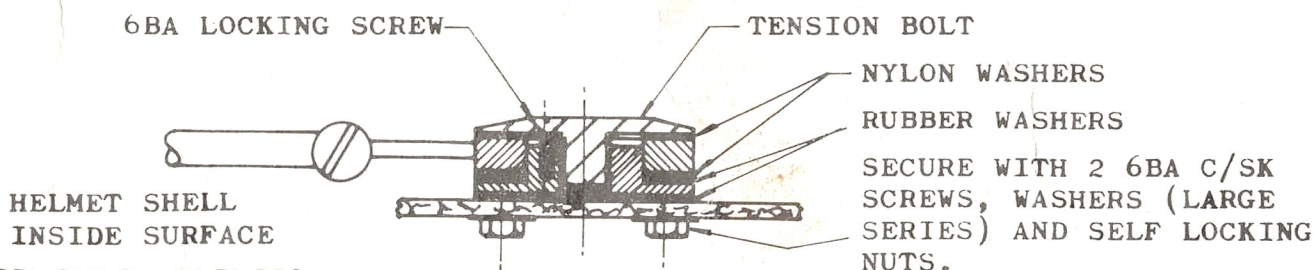
CLEMENT CLARKE INTERNATIONAL LTD., OWNS THE COPYRIGHT OF THIS DRAWING WHICH IS SUPPLIED IN CONFIDENCE AND WHICH MUST NOT BE USED FOR ANY PURPOSE OTHER THAN THAT FOR WHICH IT IS SUPPLIED, AND MUST NOT BE REPRODUCED WITHOUT PERMISSION IN WRITING FROM THE OWNERS.

© CLEMENT CLARKE INTERNATIONAL LTD., 1978



### FITTING INSTRUCTIONS

1. CUT OUT TEMPLATE ABOVE.
2. PLACE TEMPLATE OVER HELMET SIDE PLATE AS SHOWN ABOVE.
3. DRILL 2 HOLES (No. 33 DRILL) THROUGH WALL OF HELMET.  
**NOTE:** CARE MUST BE TAKEN NOT TO CUT THE STITCHING OF THE BEADING.  
IF NECESSARY HOLES MAY BE RE-POSITIONED SLIGHTLY TO ACHIEVE THIS.
4. ASSEMBLE AS SHOWN BELOW, TIGHTENING TENSION BOLT SO THAT A WEIGHT OF 100 GRAMS ( $\frac{1}{4}$ lb) WILL BE SUPPORTED WHEN PLACED AT THE END OF THE BOOM. SIMILARLY A 220 GRAMS ( $\frac{1}{2}$ lb) WEIGHT SHOULD OVERCOME FRICTIONAL RESISTANCE. AFTER SETTING FIT 6BA SCREW, SWING BOOM THROUGH  $180^\circ$  24 TIMES TO SETTLE CLUTCH, CHECK WITH WEIGHTS, RESET IF REQUIRED. ADJUSTMENT IS IN  $\frac{1}{4}$  TURN INCREMENTS. SECURE 6BA LOCKSCREW WITH LOCTITE 'B'.



REMOVE SHARP EDGES.

ALL DIMENSIONS IN MILLIMETRES

CHAM ALL THREADS AT  $45^\circ$  TO ROOT DIA.

UNLIMITED DIMENSIONS TO BE WITHIN  $\pm 0.20$

ANGLES  $\pm 1/2^\circ$  DRILLED HOLES  $+0.10 - 0.02$

MAX SURFACE  
FINISH UNLESS  
STATED (mm)



ASSEMBLY ON

2700500

SCHEDULE No.

2700500

**TITLE:** ASSEMBLY DETAILS, TEMPLATE.

**JOB** MK. 3 HELMET

MAT'L

SPEC :-

FINISH :-

SCALE -

DR'N M.W.

CH'D

MOD. No.

ISSUE No.

3/25.9.78

1/29.6.83

**DRG. No.:** 2700526