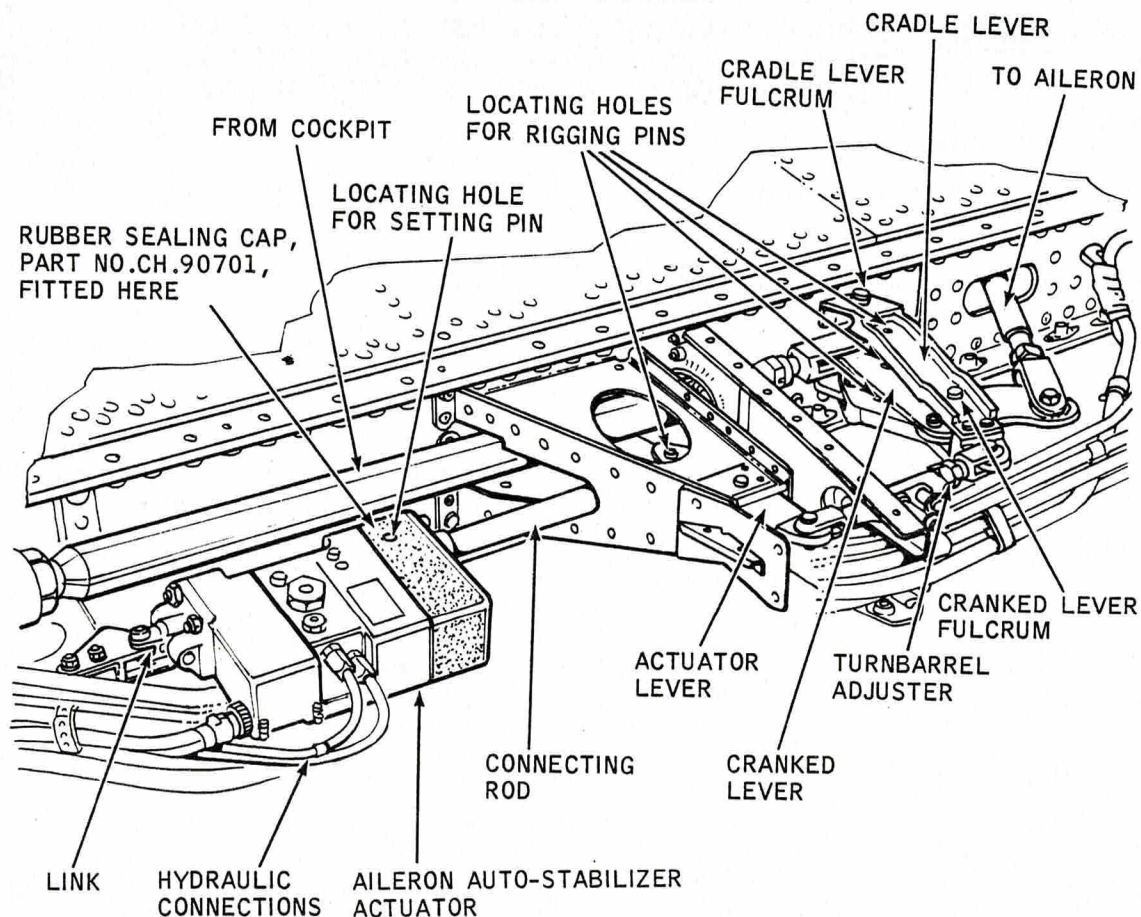


CHAP 1 AIRFRAME			SERVICING PROCEDURE		BAC F53 & T55 (SA)	
SP 25	AL	6	F53	T55	5A3A Section 1	
SHEET 1 OF 3					2nd Edition	
Aileron Auto-Stabilizer Actuator - Fitting					AFSC	
Safety and Servicing Notes are to be complied with throughout the work detailed on this card.					42152 43151	
					42172 43171	
					32550	
SPECIAL TOOLS AND EQUIPMENT					TIME EST	
Locally manufactured trammels (26DK/NIV).					ASSOCIATED PROCEDURES	
<p style="text-align: center;"><u>42152/43151</u></p> <p><u>WARNING</u> ENSURE THAT ACTUATOR REF.NO.6TD/4550003 IS FITTED TO LEFT WING, ACTUATOR REF.NO. 6TD/4550014 IS FITTED TO RIGHT WING.</p>					SP 24 (AF) SP 45 (AF) SP 46 (AF) SP 113 (AF) SP 151 (AF) SP 512 (INS)	
1. PREPARATION						
1.1 Actuator inboard pick-up link.					Fit to replacement actuator.	
NOTE: Ensure alignment of taper pin holes through link lugs.						
1.2 Adjustable connecting rod.					(i) Fit to actuator, complete with lock nut. (ii) Set pin centre (As recorded in SP 24 (AF)), from connecting rod end to auto-stabilizer link, using locally manufactured trammels (26DK/NIV). (iii) Ensure connecting rod is in safety. (iv) Tighten lock nut and lock with wire.	
2. FITTING						
2.1 Auto-stabilizer actuator.					(i) Ensure centralised. (ii) Position actuator and fit shear pin, collar and split pin (See Fig.1). (iii) Fit bolt at connecting rod end to actuator lever. Tighten nut and split pin (See Fig.1).	
2.2 Hydraulic pressure connexion.					(i) Remove blanks. (ii) Connect. (iii) Tighten and wirelock.	
2.3 Hydraulic return connexion.					(i) Remove blanks. (ii) Connect. (iii) Tighten and wirelock.	
					Continued Overleaf	
SERVICING PROCEDURE INSPECTION STAGES DO NOT EXCLUDE ADDITIONAL INSPECTION STAGES INCORPORATED AS NECESSARY IN MAINTENANCE CERTIFICATION DOCUMENTS						

CHAP. 1	AIRFRAME	SERVICING PROCEDURE		BAC F53 & T55 (SA)
S.P. 25	A.L. 4	F53	T55	5A3A Section 1
SHEET 2	OF 3			2nd Edition

Safety and Servicing Notes are to be complied with throughout the work detailed on this card.



LEFT WING SHOWN:
RIGHT WING SIMILAR

AUTO-STABILIZER - ACTUATOR INSTALLATION

FIGURE 1

Continued

SERVICING PROCEDURE INSPECTION STAGES DO NOT EXCLUDE ADDITIONAL INSPECTION STAGES INCORPORATED AS NECESSARY IN MAINTENANCE CERTIFICATION DOCUMENTS

CHAP 1 AIRFRAME	SERVICING PROCEDURE	B A C F 53 & T 55 (SA)
SP 25 A L 4	F53 T55	5A3A Section 1
SHEET 3 OF 3		2nd Edition

Safety and Servicing Notes are to be complied with throughout the work detailed on this card.

4 2 1 5 2 / 4 3 1 5 1

2. FITTING (Contd)

2.4 Auto-stabilizer actuator Connect.
pig-tail cable (At in-
line connector).

3. TESTING

3.1 Aileron auto-stabilizer Bleed (SP 151 (AF)).
system.

3.2 Aileron control system. Test (SP 113A(AF) (F53)), and
(SP 113B(AF) (T55)).

3 2 5 5 0

4. TESTING

4.2 Aileron auto-stabilizer Test (SP 512 (INS)).
system.

4 2 1 7 2 / 4 3 1 7 1 (INSPECTOR)

5. INSPECTION STAGE

5.1 Inspect installation. Independent check of:
(i) Assembly and locking.
(ii) Function.

4 3 1 5 1

6. COMPLETION

6.1 Mainplane outboard Fit (SP 45(AF) and SP 46(AF)).
leading edge section.

NOTE: All wirelocking to be of 22 SWG stainless steel wire
unless otherwise stated.

This file was downloaded
from the RTFM Library.

Link: www.scottbouch.com/rtfm

Please see site for usage terms,
and more aircraft documents.

