

CHAP. 1 AIRFRAME SP. 27 AL 4 SHEET 1 OF 3		SERVICING PROCEDURE F53 T55		BAC F53 & T55 (SA) 5A3A Section 1 2nd Edition	
Rudder Auto-Stabilizer Actuator - Fitting				AFSC 42152 43151 42172 43171 43250 32550	TIME EST
Safety and Servicing Notes are to be complied with throughout the work detailed on this card.					
SPECIAL TOOLS AND EQUIPMENT Travel gauge (26DK/95286). Auto-stabilizer neutral setting pin (26DK/95134). Locating pin (26DK/95127). Locally manufactured trammels (26DK/NIV). <div style="text-align: center;"> <u>42152 / 43151</u> </div>					ASSOCIATED PROCEDURES SP10(P) 511(INS) 151(AF) 115A(AF) or 115B(AF)
1. PREPARATION					
1.1 Actuator rear pick-up link. Fit to replacement actuator.					
NOTE: Ensure alignment of taper pin holes through lug links.					
1.2 Adjustable connecting rod.					
(i) Fit to actuator, complete with lock nut.					
(ii) Set pin centre (as recorded in SP 26(AF)) from connecting rod to auto-stabilizer link, using locally manufactured trammels (26DK/NIV)					
(iii) Ensure connecting rod is in safety.					
(iv) Tighten lock nut and lock with wire.					
2. FITTING					
2.1 Auto-stabilizer actuator.					
(i) Ensure centralised.					
(ii) Position actuator and fit shear pin, collar, and split pin (See Fig.1).					
(iii) Fit bolt at connecting rod end to cradle shaft. Tighten and wirelock.					
2.2 Hydraulic pressure connection.					
(i) Remove blanks.					
(ii) Connect.					
(iii) Tighten and wirelock.					
					Continued Overleaf
SERVICING PROCEDURE INSPECTION STAGES DO NOT EXCLUDE ADDITIONAL INSPECTION STAGES INCORPORATED AS NECESSARY IN MAINTENANCE CERTIFICATION DOCUMENTS					

CHAP 1 AIRFRAME
SP. 27 AL 4
SHEET 2 OF 3

SERVICING PROCEDURE
F53 T55

BAC F53 & T55 (SA)
5A3A Section 1
2nd Edition

Safety and Servicing Notes are to be complied with
throughout the work detailed on this card.

42152 / 43151

2. FITTING (Contd)

- 2.3 Hydraulic return connection. (i) Remove blanks.
(ii) Connect.
(iii) Tighten and wirelock.

- 2.4 Auto-stabilizer actuator pig-tail cable (At in-link connector). Connect.

3. TESTING

- 3.1 Rudder auto-stabilizer system. Bleed (SP 151(AF)).
- 3.2 Rudder control system. Test (SP 115A(AF) (F53)).
(SP 115B(AF) (T55)).

32550

4. TESTING

- 4.1 Auto-stabilizer system. Test (SP 511 (INS)).

42172 / 43171 (INSPECTOR)

5. INSPECTION STAGE

- 5.1 Inspect installation. Independent Check of:
(i) Assembly and locking.
(ii) Function.

42152 / 43151

6. COMPLETION

- 6.1 Access Panel 845(right). Refit.
- 6.2 Heat Shield (Between Frames 56 and 57 (right)). Refit.

43250

7. COMPLETION

- 7.1 No.2 Reheat Jet Pipe. Refit (SP 10(P)).

NOTE: All wirelocking must be 22 SWG stainless steel unless
otherwise stated.

Continued

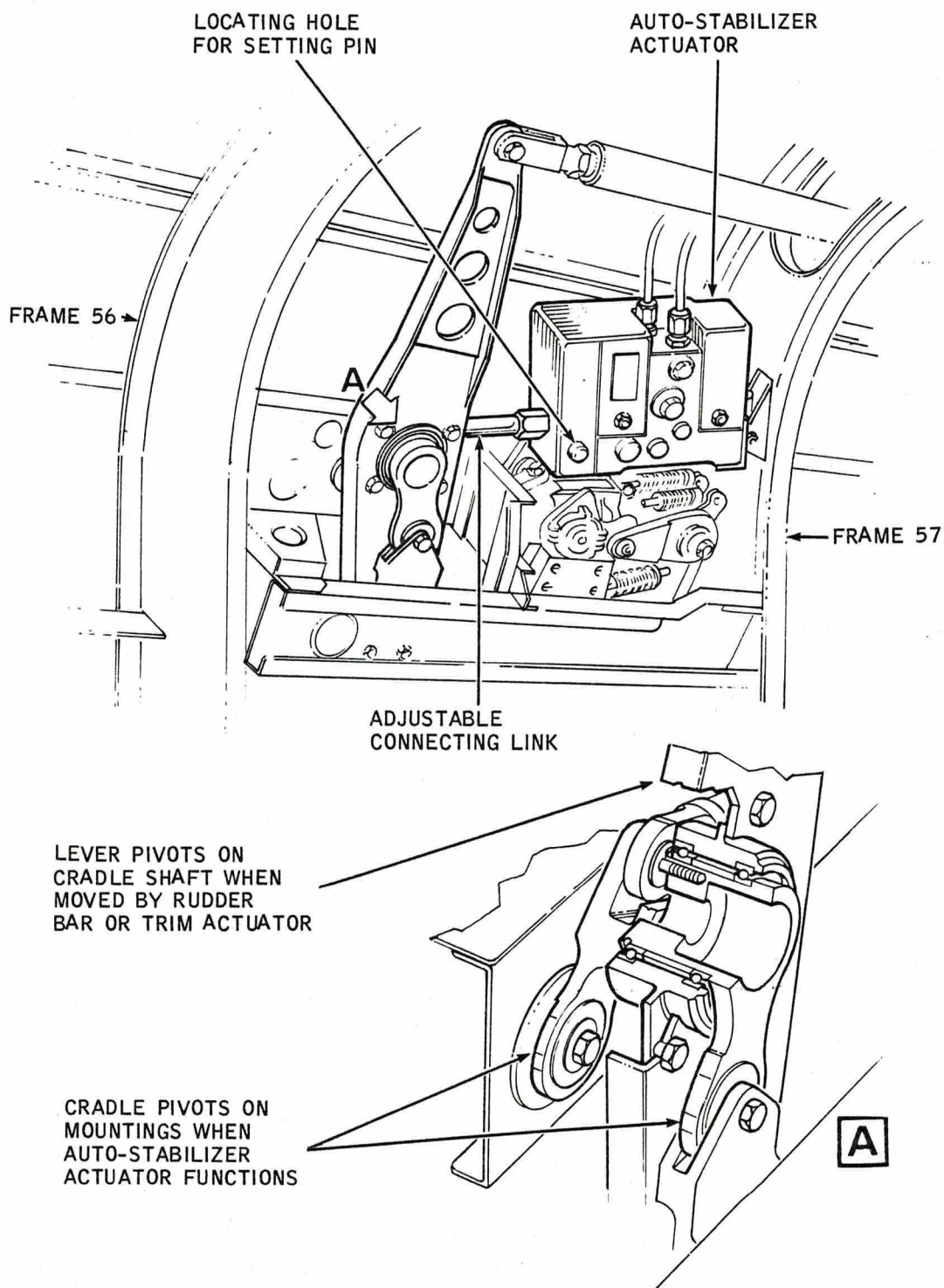
SERVICING PROCEDURE INSPECTION STAGES DO NOT EXCLUDE ADDITIONAL INSPECTION STAGES
INCORPORATED AS NECESSARY IN MAINTENANCE CERTIFICATION DOCUMENTS

CHAP. 1 AIRFRAME
S.P. 27 A.L. 4
SHEET 3 OF 3

SERVICING PROCEDURE
F53 T55

BAC F53 & T55 (SA)
5A3A Section 1
2nd Edition

Safety and Servicing Notes are to be complied with throughout the work detailed on this card.



FEEL, TRIM AND AUTO-STABILIZER
ACTUATOR INTERCONNECTION

FIGURE 1

SERVICING PROCEDURE INSPECTION STAGES DO NOT EXCLUDE ADDITIONAL INSPECTION STAGES INCORPORATED AS NECESSARY IN MAINTENANCE CERTIFICATION DOCUMENTS

This file was downloaded
from the RTFM Library.

Link: www.scottbouch.com/rtfm

Please see site for usage terms,
and more aircraft documents.

