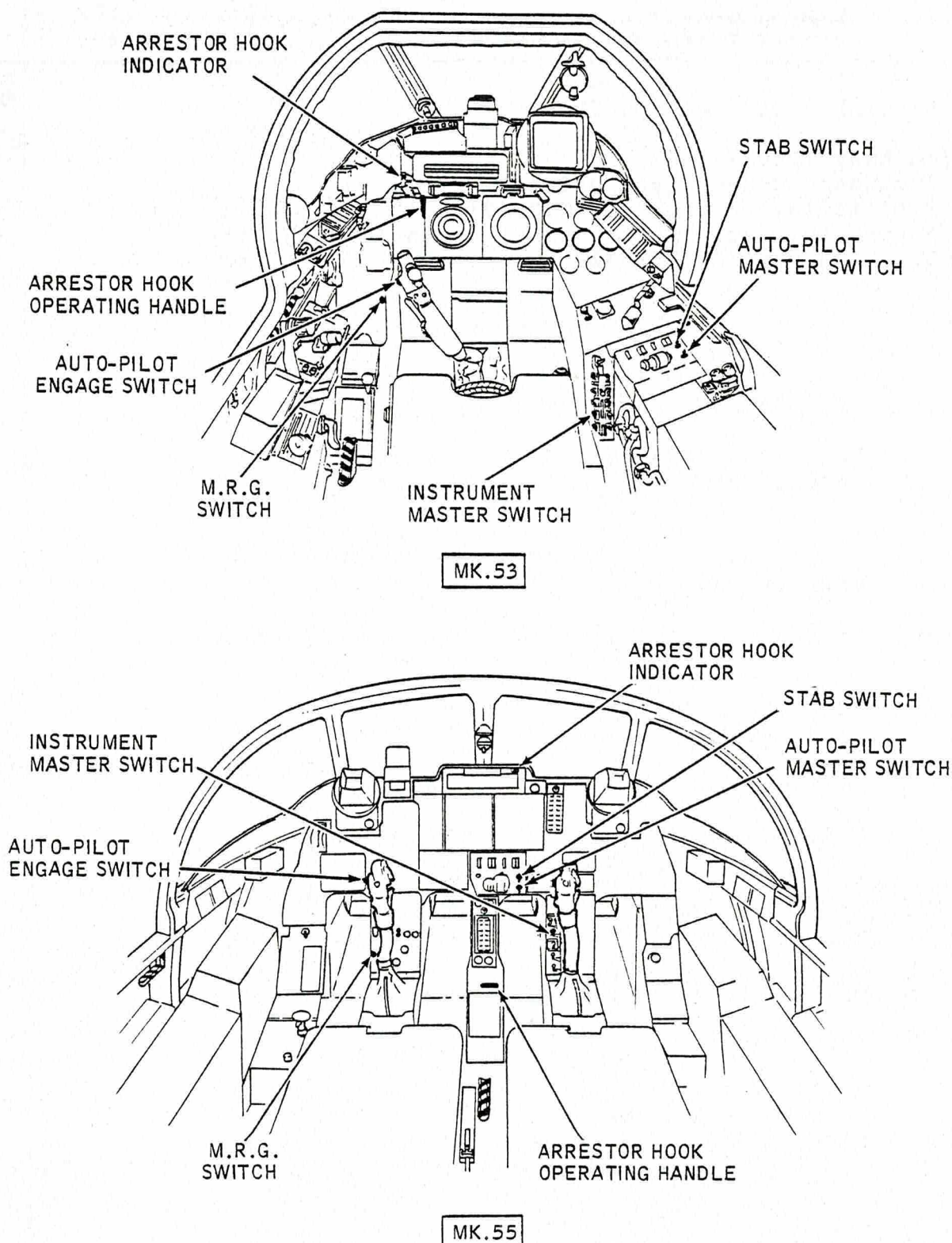


Safety and Servicing Notes are to be complied with throughout the work detailed on this card.



INSTRUMENT AND AUTO-PILOT SWITCHES
FIGURE 1

Continued

CHAP 1 AIRFRAME	SERVICING PROCEDURE	BAC F 53 & T 55 (SA)
SP 37 AL 5	F53 T55	5A3A Section 1
SHEET 3 OF 9		2nd Edition

Safety and Servicing Notes are to be complied with throughout the work detailed on this card.

42152/43151

2. PREPARATION

2.9 Service system hydraulic pressure. Release pressure by operating brake lever.

2.10 Hydraulic test trolleys. (i) Prime.
(ii) Bleed.

2.11 No.1 Services ground test connexions (Access panel 45P (left)). Connect hydraulic test trolley.

2.12 No.1 Controls ground test connexions (Access panel 45P (left)). Connect hydraulic test trolley.

2.13 Hydraulic reservoirs (Services and No.1 controls system). Replenish (SP 603(AF)).

2.14 Tyre inflation rig (4G/1050542). (i) Connect to ground air charging/release connexion (Access panel 63P (left)).
(ii) Set to deliver a pressure of between 16 and 18 lbf/in2.

2.15 External d.c. power supply. (i) Connect.
(ii) Switch to ON.

2.16 External a.c. power supply. (i) Connect.
(ii) Switch to ON.

2.17 MRG switch. Set to OFF (See Fig.1).

2.18 Stab switch (On controller). Set to OFF (See Fig.1).

2.19 Autopilot engage switch (On control column). Set to OFF (See Fig.1).

2.20 Instrument master switch. Set to ON (See Fig.1).

Continued Overleaf

SERVICING PROCEDURE INSPECTION STAGES DO NOT EXCLUDE ADDITIONAL INSPECTION STAGES INCORPORATED AS NECESSARY IN MAINTENANCE CERTIFICATION DOCUMENTS

CHAP	1	AIRFRAME	SERVICING PROCEDURE	BAC F53 & T55 (SA)
SP	37	AL	F53	5A3A Section 1
SHEET	4	OF	T55	2nd Edition

Safety and Servicing Notes are to be complied with throughout the work detailed on this card.

42152/43151

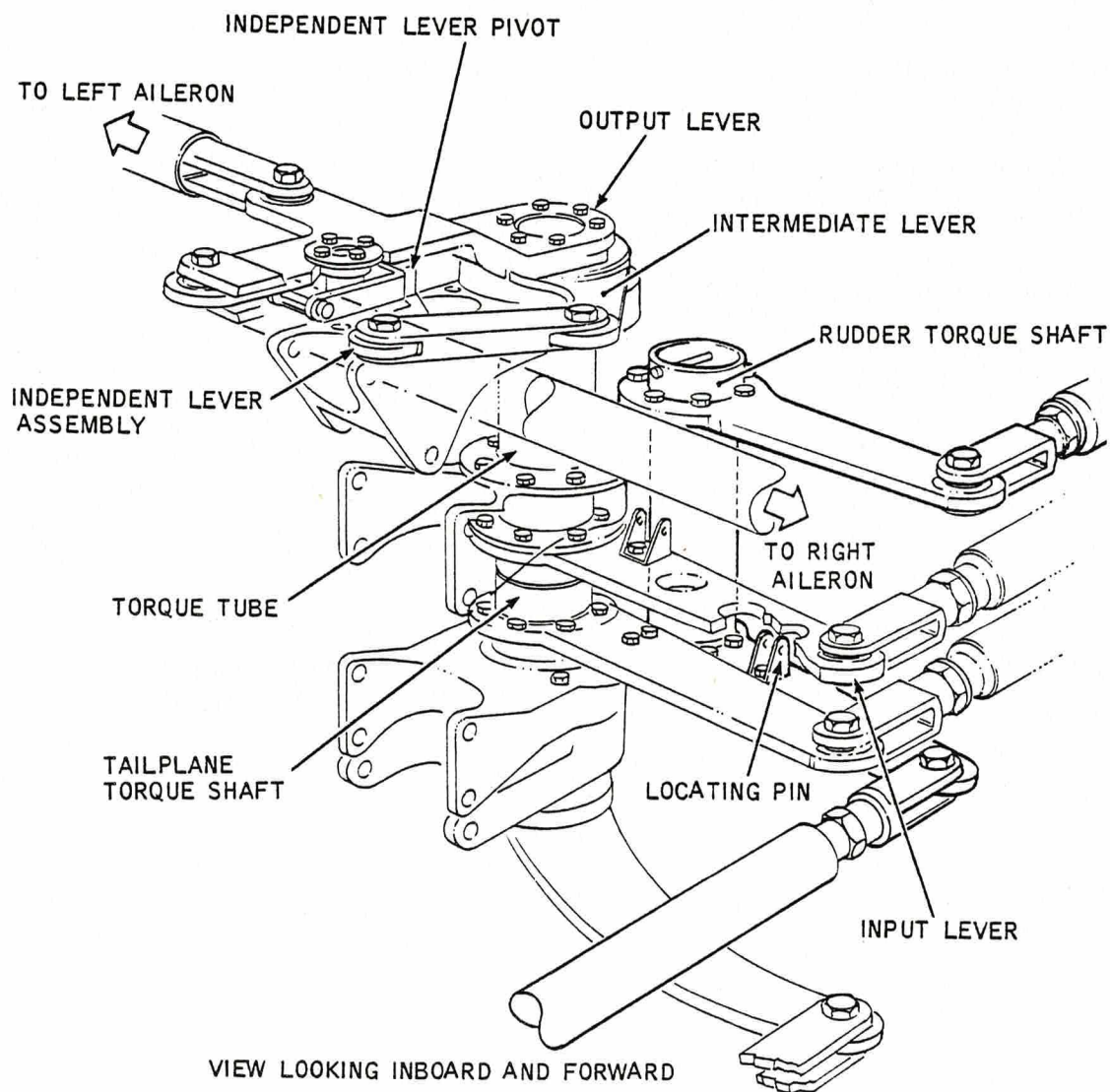
2. PREPARATION (contd)

- | | |
|---|---|
| 2.21 Autopilot master switch (On controller). | Set to ON (See Fig.1). |
| 2.22 Tailplane auto-stabilizer actuator. | (i) Set to neutral using aircraft hand pump.
(ii) Check neutral using setting pin (CHA/455/148). |
| 2.23 Tailplane auto-stabilizer actuator. | Remove setting pin. |
| 2.24 Tailplane incidence gauge (26DK/95864). | Fit. |
| 3.25 Main and nose undercarriage. | Ensure ground locks fitted. |
| 2.26 Pitot/static test set. | Connect. |
| 2.27 Services system. | Pressurize to 3000 lbf/in ² . |
| 2.28 Pitot/static system. | Pressurize to equivalent of 250Kt. |
| 2.29 No.1 controls system | Pressurize to 3000 lbf/in ² . |
| 2.30 Feel selector. | Set to IN. |
| 2.31 Tailplane trim. | Trim to neutral (On incidence gauge). |
| 2.32 Tailplane control system vertical torque shaft (Access panel 26S (right) (F53) (Access panel 20S (right) (T55)). | Fit locating pin (26DK/95127), (See Fig.2). |
| 2.33 Tailplane. | Ensure neutral. |
| 2.34 Tailplane control system vertical torque shaft. | Remove locating pin. |

Continued

SERVICING PROCEDURE INSPECTION STAGES DO NOT EXCLUDE ADDITIONAL INSPECTION STAGES INCORPORATED AS NECESSARY IN MAINTENANCE CERTIFICATION DOCUMENTS

Safety and Servicing Notes are to be complied with throughout the work detailed on this card.



NON-LINEAR GEARING MECHANISM

FIGURE 2

Continued Overleaf

CHAP 1	AIRFRAME	SERVICING PROCEDURE	BAC F53 & T55 (SA)
SP 37	AL 8	F53 T55	5A3A Section 1
SHEET 6	OF 9		2nd Edition

Safety and Servicing Notes are to be complied with throughout the work detailed on this card.

42152/43151

2. PREPARATION (contd)

- | | |
|---|---|
| 2.35 Pitot/static system. | Release pressure and remove test set. |
| 2.36 Autopilot master switch
(On controller). | Set to OFF. |
| 2.37 Instrument master switch. | Set to OFF. |
| 2.38 External d.c. power supply. | Set to OFF. |
| 2.39 External a.c. power supply. | Set to OFF. |
| 2.40 Services and No.1 controls
hydraulic test trolleys. | Stop. |
| 2.41 Rear services system
accumulator. | Exhaust pressure by selecting feel in and out. |
| 2.42 No.1 controls system. | Exhaust pressure by operating tailplane control. |
| 2.43 Tyre inflation rig
(4G/1050542). | (i) Remove.
(ii) Ensure all air is released and fit and tighten blank. |

32550/42350

3. REMOVAL

- | | |
|---|-------------|
| 3.1 Trim actuator electrical
connexions. | Disconnect. |
|---|-------------|

42152/43151

4. REMOVAL

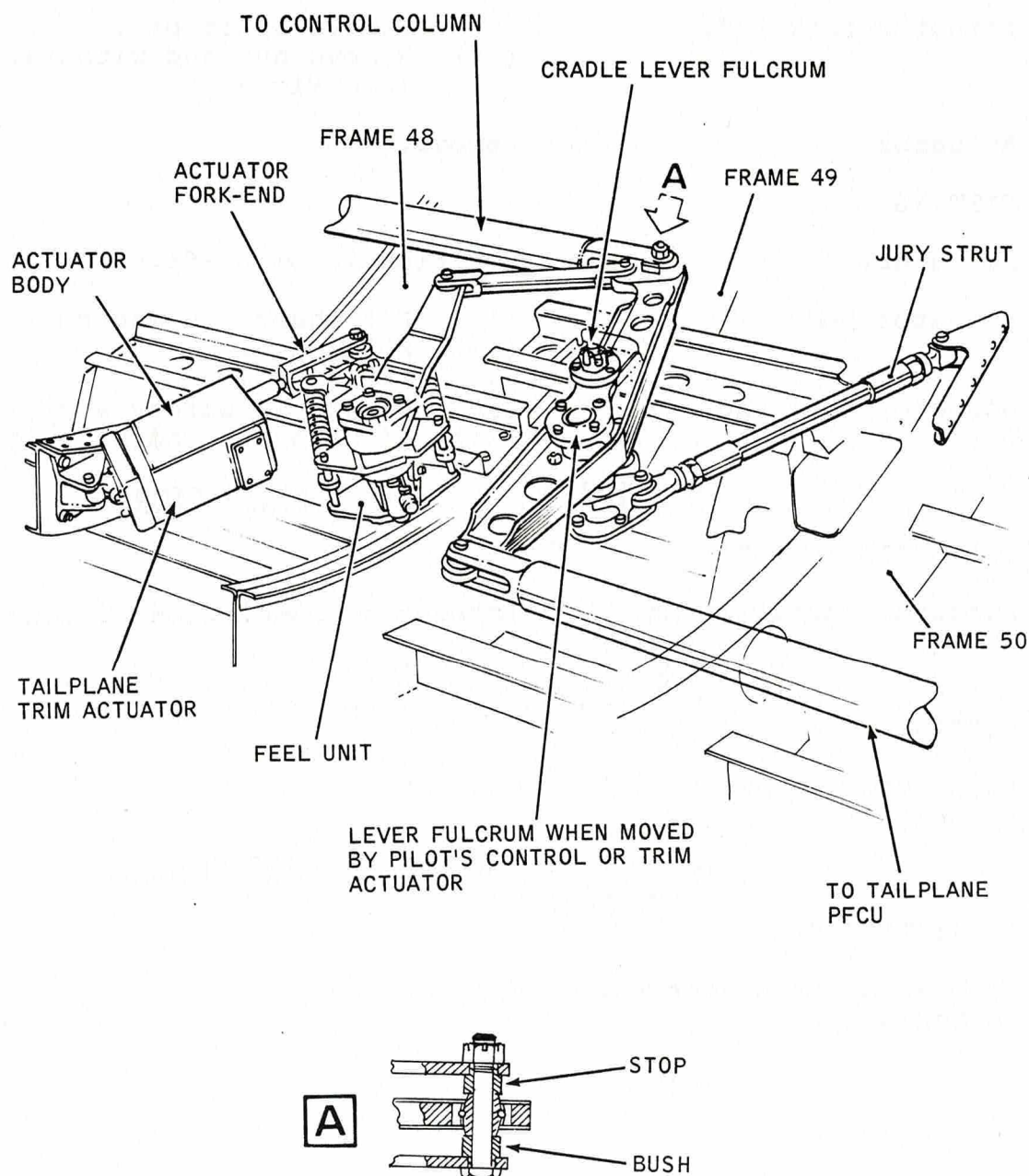
- | | |
|---|---|
| 4.1 Actuator body
(Access panel 38P (left)). | (i) Remove split pin.
(ii) Remove collar and shear pin
(See Fig.3). |
|---|---|

Continued

SERVICING PROCEDURE INSPECTION STAGES DO NOT EXCLUDE ADDITIONAL INSPECTION STAGES INCORPORATED AS NECESSARY IN MAINTENANCE CERTIFICATION DOCUMENTS

CHAP. 1	AIRFRAME	SERVICING PROCEDURE		BAC F53 & T55 (SA)
S.P. 37	A.L. 4	F53	T55	5A3A Section 1
SHEET 7	OF 9			2nd Edition

Safety and Servicing Notes are to be complied with throughout the work detailed on this card.



TRIM ACTUATOR AND FEEL UNIT INSTALLATION

FIGURE 3

Continued Overleaf

CHAP	1	AIRFRAME	SERVICING PROCEDURE	BAC F53 & T55 (SA)
SP	37	AL 9	F53 T55	5A3A Section 1
SHEET	8	OF 9		2nd Edition

Safety and Servicing Notes are to be complied with throughout the work detailed on this card.

4 2 1 5 2 / 4 3 1 5 1

4, REMOVAL

- 4.2 Actuator fork end. (i) Remove split pin.
(ii) Remove nut and withdraw bolt (See Fig.3).

- 4.3 Actuator Remove.

5. FITTING

- 5.1 Actuator. Position in aircraft.

- 5.2 Actuator body. (i) Fit shear pin and collar.
(ii) Split pin.

- 5.3 Actuator fork end. (i) Ensure in safety and fit bolt.
(ii) Tighten nut and split pin.

4 2 1 7 2 / 4 3 1 7 1 (INSPECTOR)

6. INSPECTION STAGE

- 6.1 Actuator installation Inspect on completion of item 5.

3 2 5 5 1 / 4 2 3 5 0

7. FITTING

- 7.1 Trim actuator electrical Connect.
connexions.

3 2 5 7 0 / 4 2 3 7 0 (INSPECTORS)

8. INSPECTION STAGE

- 8.1 Trim actuator electrical Inspect.
connexions.

4 2 1 5 2 / 4 3 1 5 1

9. TESTING

- 9.1 Trim range. Test (SP 114 (AF)).

3 2 5 5 0

10. TESTING

- 10.1 Trim range. Test (SP 510 (INS)).

Continued

SERVICING PROCEDURE INSPECTION STAGES DO NOT EXCLUDE ADDITIONAL INSPECTION STAGES INCORPORATED AS NECESSARY IN MAINTENANCE CERTIFICATION DOCUMENTS

CHAP	1	AIRFRAME	SERVICING PROCEDURE	BAC F53 & T55 (SA)
SP	37	AL 9	F53 T55	5A3A Section 1
SHEET	9	OF 9		2nd Edition

Safety and Servicing Notes are to be complied with throughout the work detailed on this card.

4 2 1 7 2 / 4 3 1 7 1 (INSPECTORS)

11. INSPECTION STAGE

11.1 Installation.

Independent check of:

- (i) Assembly and locking.
- (ii) Function.

4 3 1 5 1

12. GENERAL

12.1 Access panel 38P (left).

Fit.

12.2 Heat shield.

Fit.

12.3 Walkway.

Remove.

12.4 Centre ventral tank.

Fit (SP 43 (AF) or 58 (AF)).

4 3 2 5 0

13. GENERAL

13.1 No.1 intermediate and reheat jet pipe.

Fit (SP 6 (P) and SP 8 (P)).

4 3 1 5 1

14. COMPLETION

14.1 Panel 93.

Refit.

14.2 Arrestor hook bolster.

Refit.

14.3 Drain channels.

Refit.

This file was downloaded
from the RTFM Library.

Link: www.scottbouch.com/rtfm

Please see site for usage terms,
and more aircraft documents.

