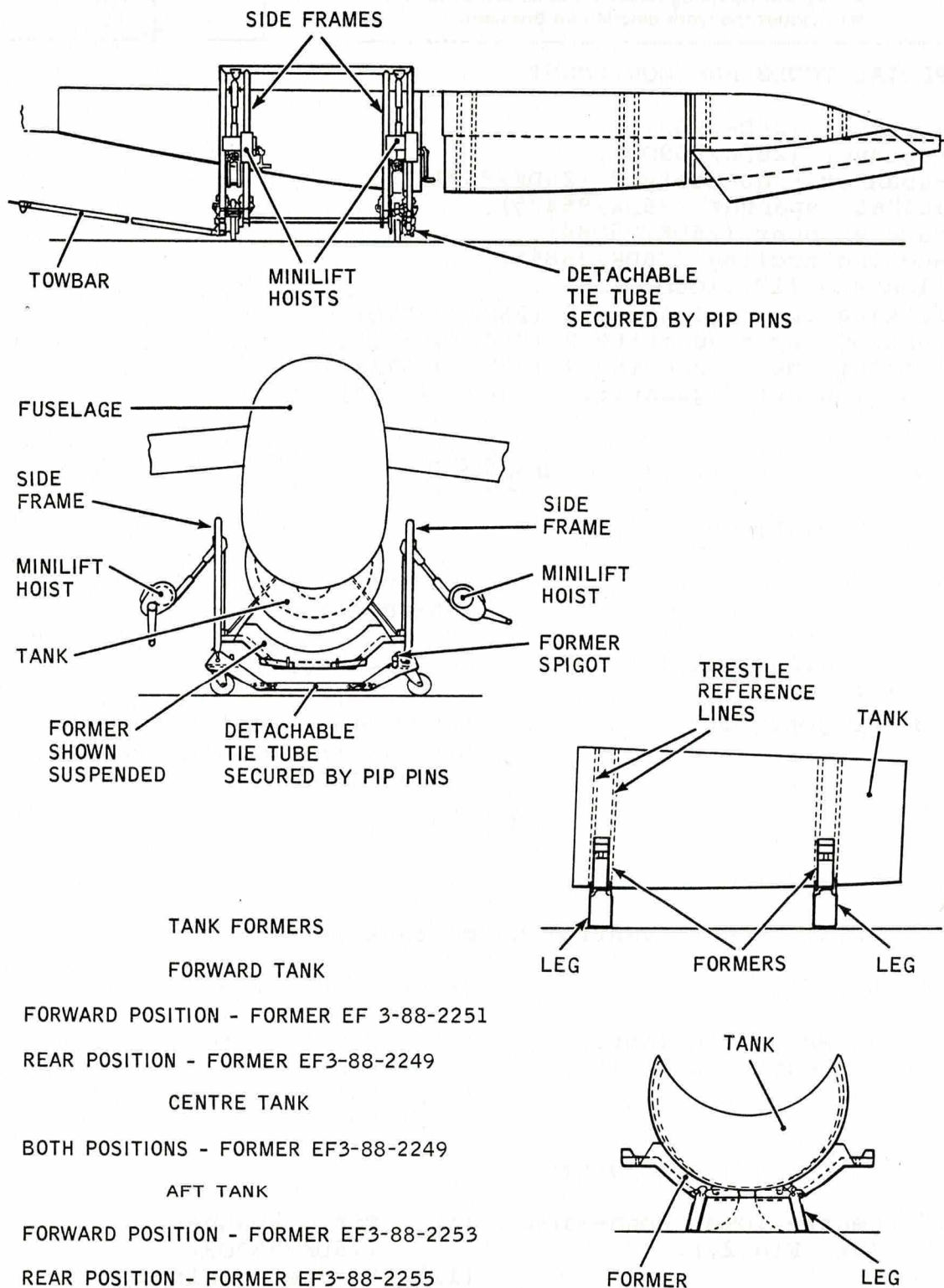


|  |                                 |   |
|--|---------------------------------|---|
| CHAP 1 AIRFRAME<br>SP 38 AL 9<br>SHEET 1 OF 8  | SERVICING PROCEDURE<br>F53 T55  | BAC F53 & T55 (SA)<br>5A3A Section 1<br>2nd Edition |
| 600 Gallon Ventral Pack Engine Hatch Tank<br>- Removal   | AFSC<br>43151<br>46250<br>42250 | TIME EST  |
| Safety and Servicing Notes are to be complied with<br>throughout the work detailed on this card.   |                                 |   |
| SPECIAL TOOLS AND EQUIPMENT<br><br>C-spanner (26DK/95910).<br>C-spanner (26DK/95909).<br>C-spanner - quantity 2 (26DK/95911).<br>Ratchet spanner (26DK/95425).<br>Brace spanner (26DK/95084).<br>Handling trolley (26DK/95866).<br>Allen key (1C/9106070).<br>Blanking cap - quantity 2 (26DK/95870).<br>Blanking cap - quantity 2 (26DK/95871).<br>Blanking cap - quantity 2 (26DK/95873).<br>Retaining nut - quantity 2 (26DK/95869).<br><br><u>46250</u><br><br>1. PREPARATION<br><br>1.1 Nose U/C door. Disconnect links at door attachment.<br><br>1.2 Missile pack (if fitted). Remove inner fairings.<br><br>1.3 Weapons pack. Lower sufficiently to allow tank to be lowered without obstruction.<br><br><u>43151</u><br><br>2. PREPARATION<br><br>NOTE: Ensure ventral hatch tank is defuelled.<br><br>2.1 Aircraft. Trestle at frame 59.<br><br>2.2 Access doors (hatch to centre tank, left and right).<br>(i) Unfasten toggle fasteners at tank centre line.<br>(ii) Swivel up and unhook.<br>(iii) Remove.<br><br>3. FUEL AND AIR CONNEXIONS<br><br>3.1 Centre lower connexion (See Fig.2.).<br>(i) Fit C-spanner (26DK/95909).<br>(ii) Rotate in direction indicated to the SHUT position. |                                 | ASSOCIATED PROCEDURES                               |
|  |                                 | Continued Overleaf                                  |
| SERVICING PROCEDURE INSPECTION STAGES DO NOT EXCLUDE ADDITIONAL INSPECTION STAGES INCORPORATED AS NECESSARY IN MAINTENANCE CERTIFICATION DOCUMENTS   |                                 |   |

Safety and Servicing Notes are to be complied with throughout the work detailed on this card.



TANK FORMERS

FORWARD TANK

FORWARD POSITION - FORMER EF 3-88-2251

REAR POSITION - FORMER EF3-88-2249

CENTRE TANK

BOTH POSITIONS - FORMER EF3-88-2249

AFT TANK

FORWARD POSITION - FORMER EF3-88-2253

REAR POSITION - FORMER EF3-88-2255

VENTRAL PACK - REMOVAL AND ASSEMBLY

FIGURE 1

Continued

|                 |                     |                      |
|-----------------|---------------------|----------------------|
| CHAP 1 AIRFRAME | SERVICING PROCEDURE | BAC F 53 & T 55 (SA) |
| SP 38 AL 8      | F53 T55             | 5A3A Section 1       |
| SHEET 3 OF 8    |                     | 2nd Edition          |

Safety and Servicing Notes are to be complied with throughout the work detailed on this card.

43151

3. FUEL AND AIR CONNEXIONS (Contd)

3.2 King clamps. Remove.

3.3 Bellows assembly. Remove complete with O-ring seals.

3.4 Hatch tank:

(a) O-ring seal. Fit.

(b) Blanking cap (26DK/95871). Fit.

(c) King clamp. Fit.

3.5 Centre tank:

(a) O-ring seal. Fit.

(b) Blanking cap (26DK/95871). Fit.

(c) King clamp. Fit.

3.6 Upper right connexion (See Fig.2).

(i) Fit C-spanner (26DK/95910)

(ii) Rotate in direction indicated to the SHUT position.

3.7 King clamps. Remove.

3.8 Bellows assembly. Remove complete with O-ring seal.

3.9 Hatch tank:

(a) O-ring seal. Fit.

(b) Blanking cap (26DK/95863). Fit.

(c) King clamp. Fit.

3.10 Centre tank:

(a) Detachable turning link assembly.

(i) Remove wire locking.

(ii) Slacken retaining nut using C-spanner (26DK/95911) whilst reacting at flange of turning link with C-spanner (26DK/95911).

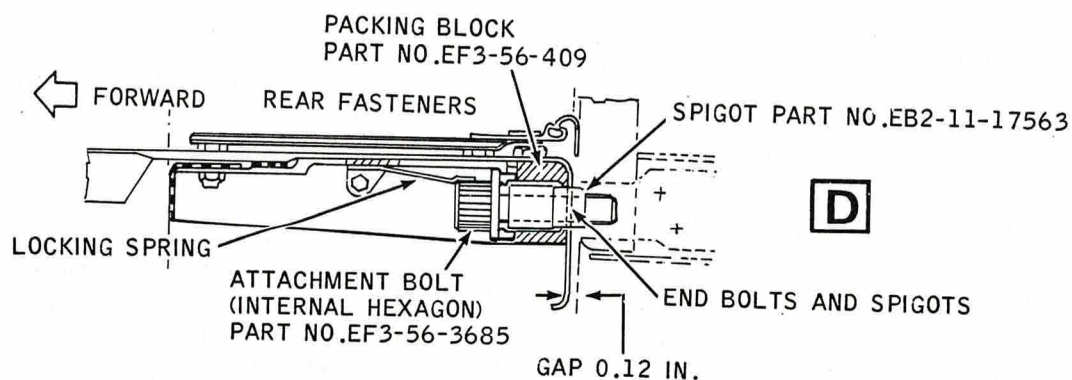
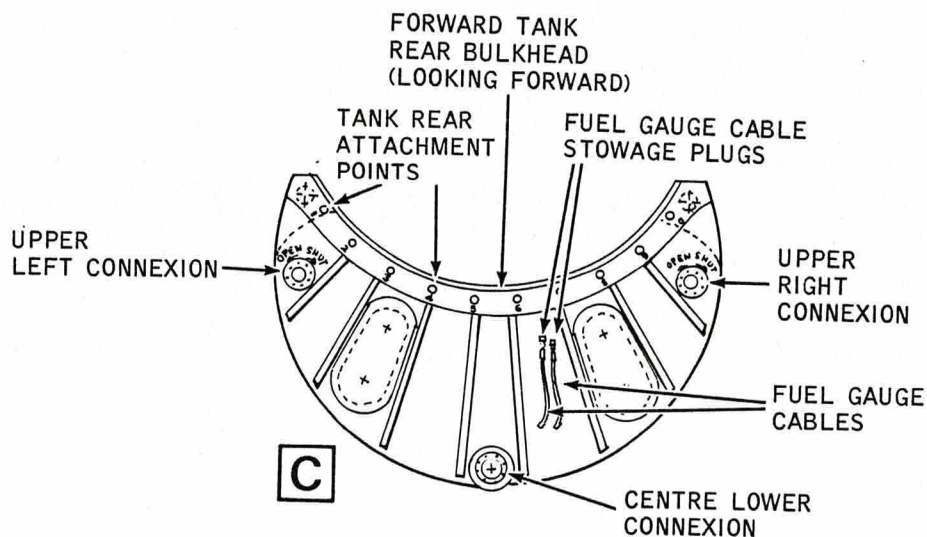
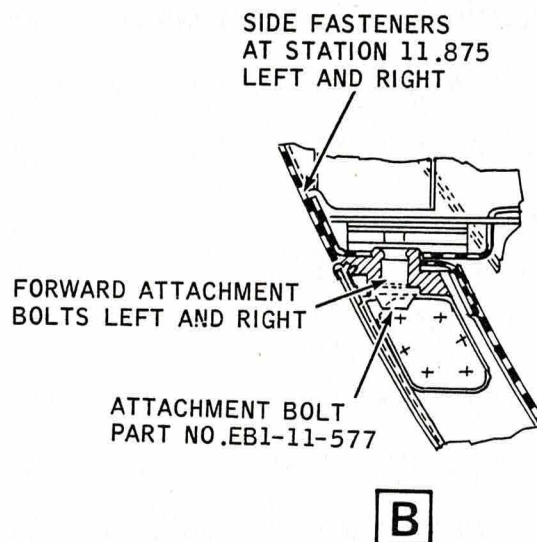
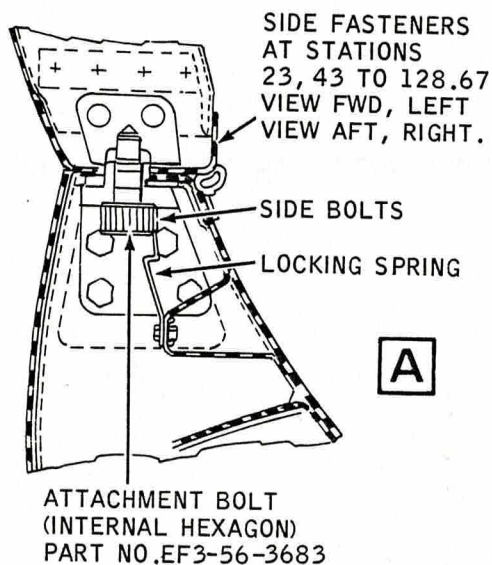
(iii) Remove.

Continued Overleaf

SERVICING PROCEDURE INSPECTION STAGES DO NOT EXCLUDE ADDITIONAL INSPECTION STAGES INCORPORATED AS NECESSARY IN MAINTENANCE CERTIFICATION DOCUMENTS



Safety and Servicing Notes are to be complied with throughout the work detailed on this card.



FORWARD TANK ATTACHMENT

FIGURE 2

Continued

|   |  |  |
|---|--|--|
| <b>CHAP 1 AIRFRAME</b><br><b>SP 38 AL 8</b><br><b>SHEET 5 OF 8</b>  | <b>SERVICING PROCEDURE</b><br><b>F53 T55</b> | <b>B A C F 53 &amp; T 55 (SA)</b><br><b>5A3A Section 1</b><br><b>2nd Edition</b> |
| <b>Safety and Servicing Notes are to be complied with throughout the work detailed on this card.</b>  |  |  |
| <div style="text-align: center; margin-bottom: 20px;"> <u>4 3 1 5 1</u> </div> <div> <div>3. FUEL AND AIR CONNEXIONS (Contd)</div> <div>3.10 Centre tank: (Contd)</div> <div> <div>(b) O-ring seal.</div> <div>Fit.</div> </div> <div> <div>(c) Blanking cap (26DK/95870).</div> <div>Fit.</div> </div> <div> <div>(d) Retaining nut (26DK/95869).</div> <div>Fit and tighten using C-spanner (26DK/95911) whilst reacting on blanking cap with allen key (1C/9106070).</div> </div> <div> <div>3.11 Upper left connexion (See Fig.2).</div> <div> <div>(i) Fit C-spanner (26DK/95910).</div> <div>(ii) Rotate in direction indicated to the SHUT position.</div> </div> </div> <div> <div>3.12 King clamps.</div> <div>Remove.</div> </div> <div> <div>3.13 Bellows assembly.</div> <div>Remove complete with O-ring seal.</div> </div> <div> <div>3.14 Hatch tank:</div> <div> <div>(a) O-ring seal.</div> <div>Fit.</div> </div> <div> <div>(b) Blanking cap (26DK/95863).</div> <div>Fit.</div> </div> <div> <div>(c) King clamp.</div> <div>Fit.</div> </div> </div> <div> <div>3.15 Centre tank:</div> <div> <div>(a) Detachable turning link assembly.</div> <div> <div>(i) Remove wire locking.</div> <div>(ii) Slacken retaining nut using spanner (26DK/95911) whilst reacting at flange of turning link with C-spanner (26DK/95911).</div> <div>(iii) Remove.</div> </div> </div> <div> <div>(b) O-ring seal.</div> <div>Fit.</div> </div> <div> <div>(c) Blanking cap (26DK/95870).</div> <div>Fit.</div> </div> <div> <div>(d) Retaining nut (26DK/95869).</div> <div>Fit and tighten using C-spanner (26DK/95911) whilst reacting on blanking cap with allen key (1C/9106070).</div> </div> </div> </div> |  |  |
| <b>SERVICING PROCEDURE INSPECTION STAGES DO NOT EXCLUDE ADDITIONAL INSPECTION STAGES INCORPORATED AS NECESSARY IN MAINTENANCE CERTIFICATION DOCUMENTS</b>   |  | <b>Continued Overleaf</b>  |

|                 |                     |                    |
|-----------------|---------------------|--------------------|
| CHAP 1 AIRFRAME | SERVICING PROCEDURE | BAC F53 & T55 (SA) |
| SP 38 AL 8      | F53 T55             | 5A3A Section 1     |
| SHEET 6 OF 8    |                     | 2nd Edition        |

Safety and Servicing Notes are to be complied with throughout the work detailed on this card.

42250/43151

#### 4. CENTRE TANK

- 4.1 Cables (contents gauging). (i) Disconnect.  
(ii) Stow in clip on engine hatch tank.

43151

NOTE: During item 5 the tank must not be allowed to hang or swing on its front attachments and force must not be applied to spigots, bolts or the tank. Failure to ensure this will result in cracking of parts of fuselage structure.

#### 5. ENGINE HATCH TANK

- 5.1 Side-bolt cover plates. Remove.
- 5.2 Side-bolts (See Fig.2). Remove sidebolts at positions 5 and 9 (Left and right) (counted from front).
- 5.3 Handling trolley (26DK/95866) (See Fig.1). (i) Position under tank.  
(ii) Raise.
- 5.4 Circular end-fitting (FCU drain outlet). Remove.
- 5.5 O-ring seal. Remove from flexible drain (26DK/35403).
- 5.6 End bolts (See Fig.2). Remove, working from each side towards centre using ratchet spanner (26DK/95425).
- 5.7 End-bolt spigots (See Fig.2). Unscrew, working from each side towards centre, using ratchet spanner (26DK/95425) until each spigot head contacts stop bracket inside cavity.
- 5.8 Side bolts. Remove remainder using ratchet spanner (26DK/95425).
- 5.9 Left and right forward attachment bolts (quantity 2) (See Fig.2). Remove using brace spanner (26DK/95084).

Continued

SERVICING PROCEDURE INSPECTION STAGES DO NOT EXCLUDE ADDITIONAL INSPECTION STAGES INCORPORATED AS NECESSARY IN MAINTENANCE CERTIFICATION DOCUMENTS



|         |          |                     |                    |
|---------|----------|---------------------|--------------------|
| CHAP 1  | AIRFRAME | SERVICING PROCEDURE | BAC F53 & T55 (SA) |
| SP 38   | AL 9     | F53 T55             | 5A3A Section 1     |
| SHEET 7 | OF 8     |                     | 2nd Edition        |

Safety and Servicing Notes are to be complied with throughout the work detailed on this card.

4 3 1 5 1

5. ENGINE HATCH TANK (Contd)

- 5.10 Engine hatch tank. (i) Lower ensuring flexible pipe assembly and engine starter exhaust do not foul.  
(ii) Remove from vicinity of aircraft.
- 5.11 Circular end-fitting (FCU drain outlet). Refit to hatch.

4 6 2 5 0

6. GENERAL

- 6.1 Weapons pack. (i) Raise.  
(ii) Refit.

4 3 2 5 0

7. EXAMINATION

- 7.1 Air inlet pipe to reheat pump assembly 26DK/10571 (O43614). Reheat System No.1 Engine Compartment  
Examine particularly for security of air clips (Quantity 2)  
See Fig.3.
- 7.2 GW pack heating flexible pipe protective tape (O45401). Equipment Cooling and Heating Systems - Examine particularly for chafing .

4 2 3 5 0

8. TEST

- 8.1 No.1 Engine igniter Plugs. (i) Check for continuity using a 500 volt Megger.  
(ii) All plugs with a test reading of 0.5 Megohms between the centre electrode and the outer body are to be rejected and replaced by a serviceable item.

4 3 1 7 1

9. COMPLETION

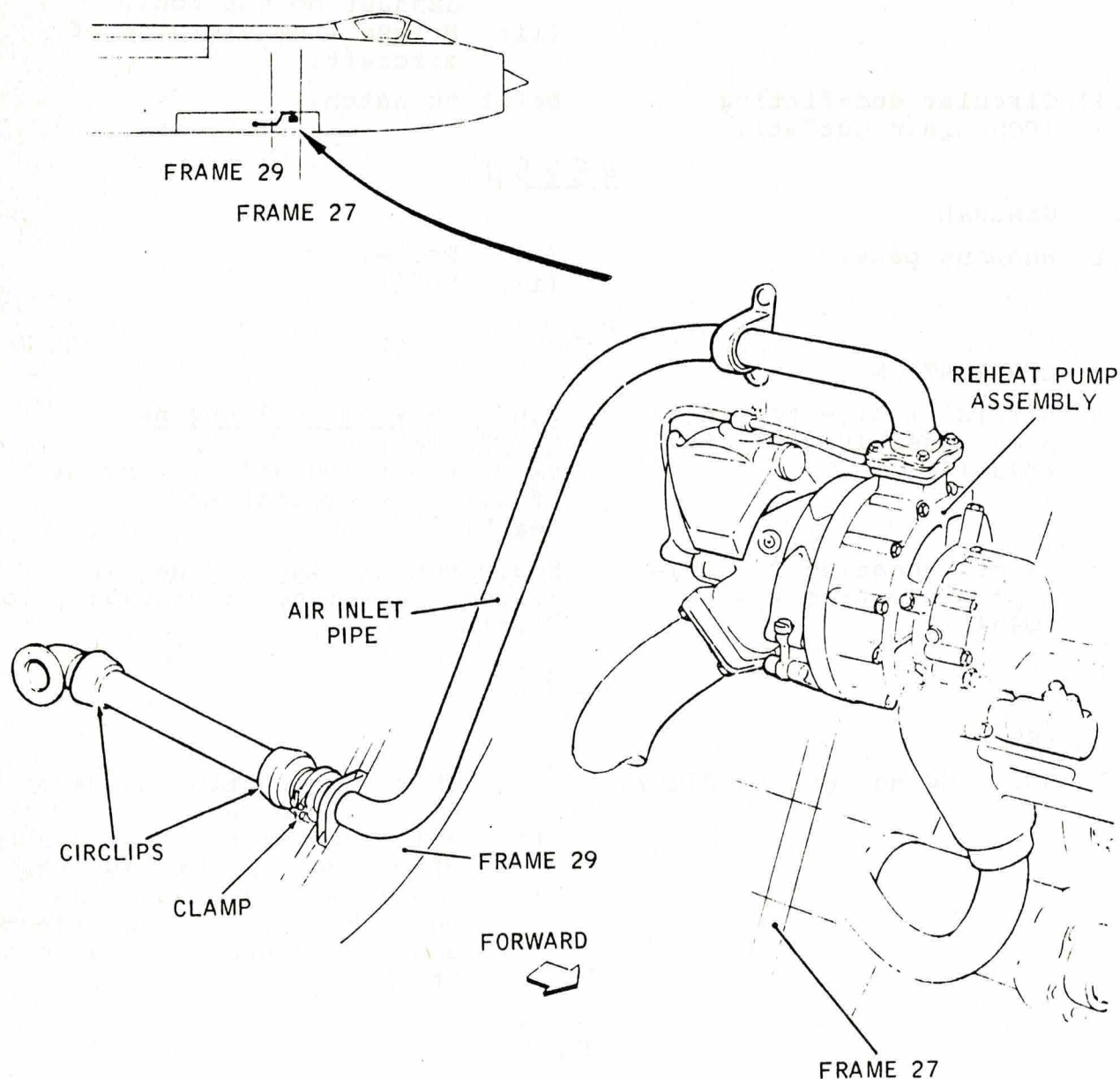
- 9.1 Engine hatch tank. Complete Serviceable label or AFTO 350 as applicable.

Continued Overleaf

SERVICING PROCEDURE INSPECTION STAGES DO NOT EXCLUDE ADDITIONAL INSPECTION STAGES INCORPORATED AS NECESSARY IN MAINTENANCE CERTIFICATION DOCUMENTS

|       |    |          |   |                     |     |                    |
|-------|----|----------|---|---------------------|-----|--------------------|
| CHAP  | 1  | AIRFRAME |   | SERVICING PROCEDURE |     | BAC F53 & T55 (SA) |
| SP    | 38 | AL       | 8 | F53                 | T55 | 5A3A Section 1     |
| SHEET | 8  | OF       | 8 |                     |     | 2nd Edition        |

Safety and Servicing Notes are to be complied with throughout the work detailed on this card.



AIR INLET PIPE  
FIGURE 3

SERVICING PROCEDURE INSPECTION STAGES DO NOT EXCLUDE ADDITIONAL INSPECTION STAGES INCORPORATED AS NECESSARY IN MAINTENANCE CERTIFICATION DOCUMENTS



This file was downloaded  
from the RTFM Library.  
Link: [www.scottbouch.com/rtfm](http://www.scottbouch.com/rtfm)

Please see site for usage terms,  
and more aircraft documents.

