

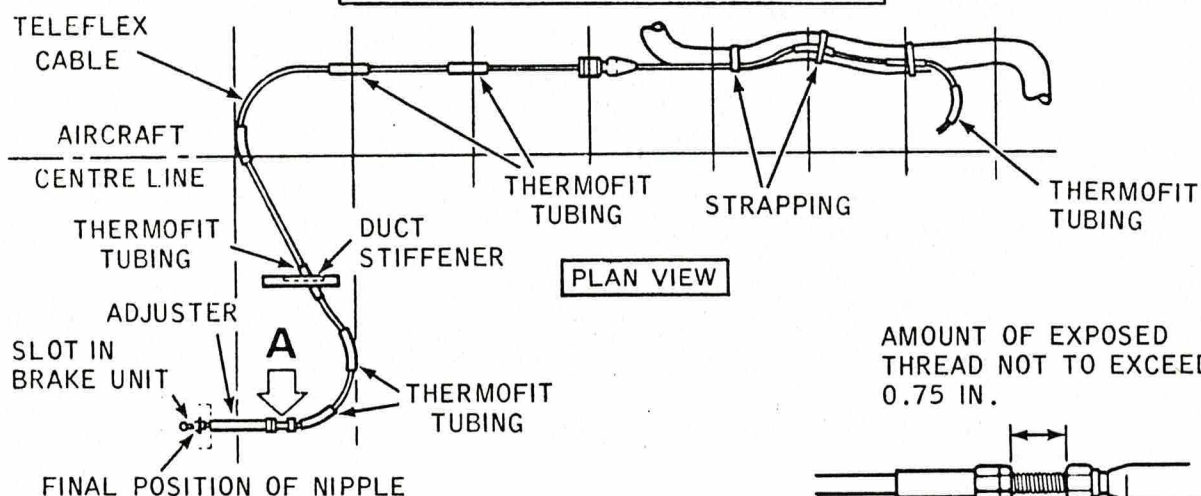
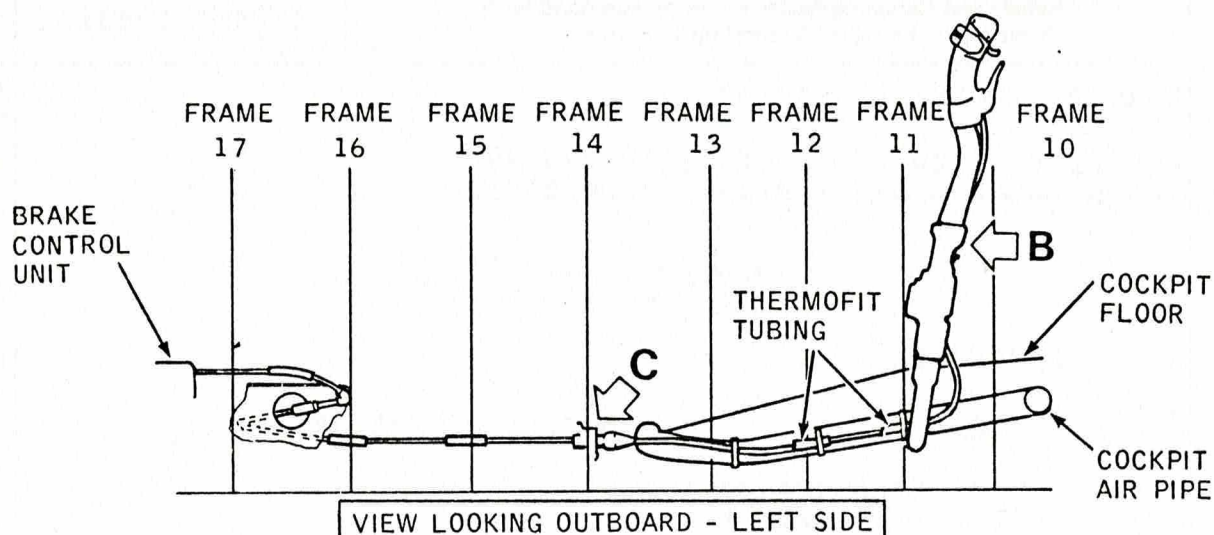
CHAP 1 AIRFRAME SP 51 AL 4 SHEET 1 OF 6		SERVICING PROCEDURE F53		BAC F53 & T55 (SA) 5A3A Section 1 2nd Edition		
Brake Cable - Replacement				AFSC 43151 43171 42252 32251 32550 32851 42251		TIME EST
Safety and Servicing Notes are to be complied with throughout the work detailed on this card.						
SPECIAL TOOLS AND EQUIPMENT						ASSOCIATED PROCEDURES
Canopy seal guard - Left (26DK/95129).						SP 5A (AF)
Canopy seal guard - Right (26DK/95130).						6A (AF)
						105 (AF)
						1A (W)
						2A (W)
						116A (AF)
						120 (INS)
						100 (RAD)
						101A (RAD)
						102 (RAD)
<u>42252 / 43151</u>						
1. PREPARATION						
1.1 Canopy. Remove (SP 5A (AF)).						
1.2 Canopy seal guards (26DK/95129 (left)), (26DK/95130 (right)). Fit.						
<u>42252</u>						
2. PREPARATION						
2.1 Ejection seat. Remove (SP 1A (W)).						
<u>43151</u>						
3. PREPARATION						
3.1 Main equipment bay (Access panel 21S (right)). Open.						
<u>32550</u>						
4. PREPARATION						
4.1 FSDB. Remove.						
4.2 FCC. Remove.						
<u>32251</u>						
5. PREPARATION						
5.1 Gyroscope unit. Remove.						
5.2 Marker unit. Remove.						

CHAP 1 AIRFRAME
SP 51 AL 8
SHEET 2 OF 6

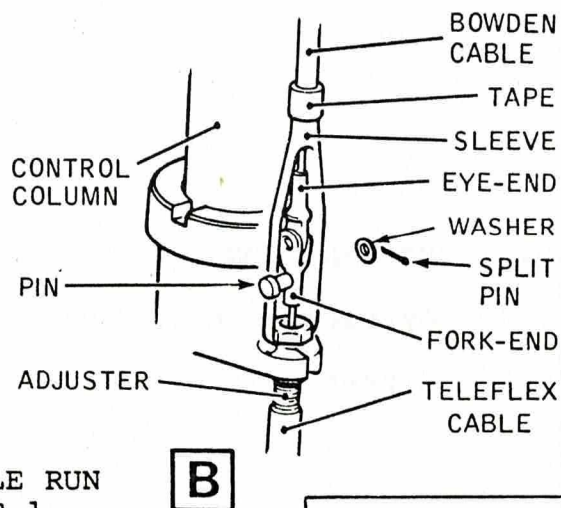
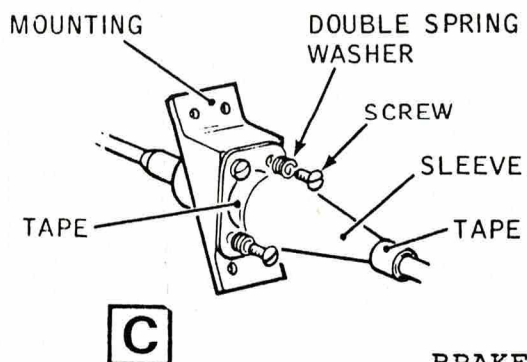
SERVICING PROCEDURE
F53

BAC F53 & T55 (SA)
5A3A Section 1
2nd Edition

Safety and Servicing Notes are to be complied with throughout the work detailed on this card.



NOTE: ON ASSEMBLY OF BRAKE CABLE, INSERT NIPPLE INTO RELEVANT HOLE IN BRAKE CONTROL UNIT. ENSURE CABLE DROPS DOWN SLOT AS INDICATED AND NIPPLE IS PULLED INTO DOTTED POSITION BEFORE ADJUSTING CABLE.



BRAKE CABLE RUN
FIGURE 1

Continued

SERVICING PROCEDURE INSPECTION STAGES DO NOT EXCLUDE ADDITIONAL INSPECTION STAGES INCORPORATED AS NECESSARY IN MAINTENANCE CERTIFICATION DOCUMENTS

CHAP 1 AIRFRAME	SERVICING PROCEDURE	B A C F 53 & T 55 (SA)
SP 51 AL 9	F53	5A3A Section 1
SHEET 3 OF 6		2nd Edition

Safety and Servicing Notes are to be complied with throughout the work detailed on this card.

3 2 8 5 1

6. PREPARATION

6.1 IFF Coder unit. Remove.

6.2 TACAN T/R. Remove.

4 3 1 5 1

7. REMOVAL

7.1 Brake cable (At control valve), (See Fig.1).

- (i) Disconnect from brake control valve, access panel 21S (right) by slackening the adjuster at the nipple end of the cable.
- (ii) Remove wirelocking from retaining screw.
- (iii) Remove retaining screw and bush.
- (iv) Free nipple from brake control valve and push cable forward through FR 17.

7.2 Control column gaiter.

- (i) Remove jubilee clip.
- (ii) Remove 2 BA bolts (quantity 6).

7.3 Brake cable (At control column), (See Fig.1).

- (i) Disconnect at fork-end attachment above control column adjuster.
- (ii) Retain connecting pin and washer.
- (iii) Disconnect from control column by unscrewing adjuster.

7.4 Cockpit floor. Remove panels to gain access to brake cable.

7.5 Pressure seal assembly (FR 14), (See Fig.1, Detail C).

- (i) Remove the two bolts upper and the two screws lower, with associated spring washers.
- (ii) Separate the contact faces.

7.6 Brake cable.

- (i) Remove retaining clips bolts nuts and washers.
- (ii) Attach sufficient length of strong cord to both ends of brake cable.

Continued Overleaf

SERVICING PROCEDURE INSPECTION STAGES DO NOT EXCLUDE ADDITIONAL INSPECTION STAGES INCORPORATED AS NECESSARY IN MAINTENANCE CERTIFICATION DOCUMENTS

CHAP	1	AIRFRAME	SERVICING PROCEDURE	BAC F53 & T55 (SA)
SP	51	AL 4	F53	5A3A Section 1
SHEET	4	OF 6		2nd Edition

Safety and Servicing Notes are to be complied with throughout the work detailed on this card.

43151

7. REMOVAL (Contd)

- 7.6 Brake cable (contd) (iii) Withdraw brake cable at FR 14, leaving cord in-situ marking cable route.

8. FITTING

NOTE: Extreme care must be exercised during cable installation. Do not kink inner cable.

- 8.1 Brake cable. Feed cable through FR 12 to 16 using previously marked route.

- 8.2 Pressure seal assembly (FR 14).
- (i) Clean and degrease mating surfaces.
 - (ii) Coat mating surfaces with sealing compound (PR1221BT).
 - (iii) Fit new double spring washers to the two bolts and two screws.
 - (iv) Reassemble the pressure seal assembly to the mounting block on the bulkhead (See Fig.1).

- 8.3 Brake cable (at control valve).
- (i) Feed cable end aft through FR 17 and connect nipple end to brake control valve.
 - (ii) Fit bush and retaining screw.
 - (iii) Wirelock retaining screw.
 - (iv) Set adjuster at control valve end to 0.75 in of exposed thread and tighten locknut (See Fig.1, Detail A).

- 8.4 Cable adjuster, control column end. Fit to control column.

- 8.5 Brake cable (at control column), (See Fig.1, Detail B).
- (i) Connect at fork end attachment above control column adjuster.
 - (ii) Fit connecting pin, washer and split pin (See Fig.1).

- 8.6 Brake cable. Fit into position along route using retaining clips and attachment bolts nuts and washers.

- 8.7 Cable adjuster control column end. (i) Adjust to remove slack from cable run.

Continued

SERVICING PROCEDURE INSPECTION STAGES DO NOT EXCLUDE ADDITIONAL INSPECTION STAGES INCORPORATED AS NECESSARY IN MAINTENANCE CERTIFICATION DOCUMENTS

CHAP 1 AIRFRAME	SERVICING PROCEDURE	BAC F53 & T55 (SA)
SP 51 AL 9	F53	5A3A Section 1
SHEET 5 OF 6		2nd Edition

Safety and Servicing Notes are to be complied with throughout the work detailed on this card.

4 3 1 5 1

8. FITTING (Cont'd)

8.7 Cable adjuster control column end (cont'd). (ii) Lock with locknut.

9. TESTING

NOTE 1: In sub-item 9.1 ensure that the brake cable cannot be pulled through retaining clips past the sleeve at any point. If the cable is being pulled through the retaining clips past the sleeve the cable must be removed and additional sleeving fitted.

NOTE 2: Sub-item 9.1 is to be carried out in conjunction with sub-items 10.1 (ii) and 11.3 (iv).

9.1 Wheel Brakes. Test (SP 105 (AF)).

4 3 1 7 1 (INSPECTOR)

10. INSPECTION STAGE

10.1 Inspect. Independent check of:
(ii) Assembly and locking.
(ii) Function.

4 3 1 5 1

11. COMPLETION

11.1 Cockpit. (i) Clean with vacuum cleaner.
(ii) Ensure no loose articles.

11.2 Cockpit floor. Refit panels.

11.3 Control Column. (i) Fasten gaiter.
(ii) Refit 2 BA bolts (quantity 6).
(iii) Refit jubilee clip.
(iv) Ensure slack in gaiter to allow for control column movement.

3 2 8 5 1

12. COMPLETION

12.1 IFF Coder unit. (i) Refit (SP 102 (RAD)).

12.2 TACAN T/R. (i) Refit (SP 100 (RAD)).
(ii) Test.

Continued Overleaf

SERVICING PROCEDURE INSPECTION STAGES DO NOT EXCLUDE ADDITIONAL INSPECTION STAGES INCORPORATED AS NECESSARY IN MAINTENANCE CERTIFICATION DOCUMENTS

CHAP	1	AIRFRAME	SERVICING PROCEDURE	BAC F53 & T55 (SA)
SP	51	AL	F53	5A3A Section 1
SHEET	6	OF		2nd Edition

Safety and Servicing Notes are to be complied with throughout the work detailed on this card.

32251

13. COMPLETION

- 13.1 Gyroscope unit. (i) Refit.
(ii) Test (SP 101A(RAD)).
- 13.2 Marker unit. (i) Refit (SP 101A(RAD)).
(ii) Test.

32550

14. COMPLETION

- 14.1 FSDB. (i) Refit.
(ii) Functional check.
- 14.2 FCC. (i) Refit.
(ii) Functional check.

43151

15. COMPLETION

- 15.1 Main equipment bay (access Close.
panel 21S (right)).

42252

16. COMPLETION

- 16.1 Ejection seat. Refit (SP 2A(W)).

42252/43151

17. COMPLETION

- 17.1 Canopy. Refit (SP 6(AF)).
- 17.2 Canopy seal guards. Remove.

42251/43151

18. COMPLETION

- 18.1 Cabin pressurization. Test (SP 116(AF)).

NOTE: All wirelocking to be of 22 SWG stainless steel wire unless otherwise stated.

This file was downloaded
from the RTFM Library.

Link: www.scottbouch.com/rtfm

Please see site for usage terms,
and more aircraft documents.

