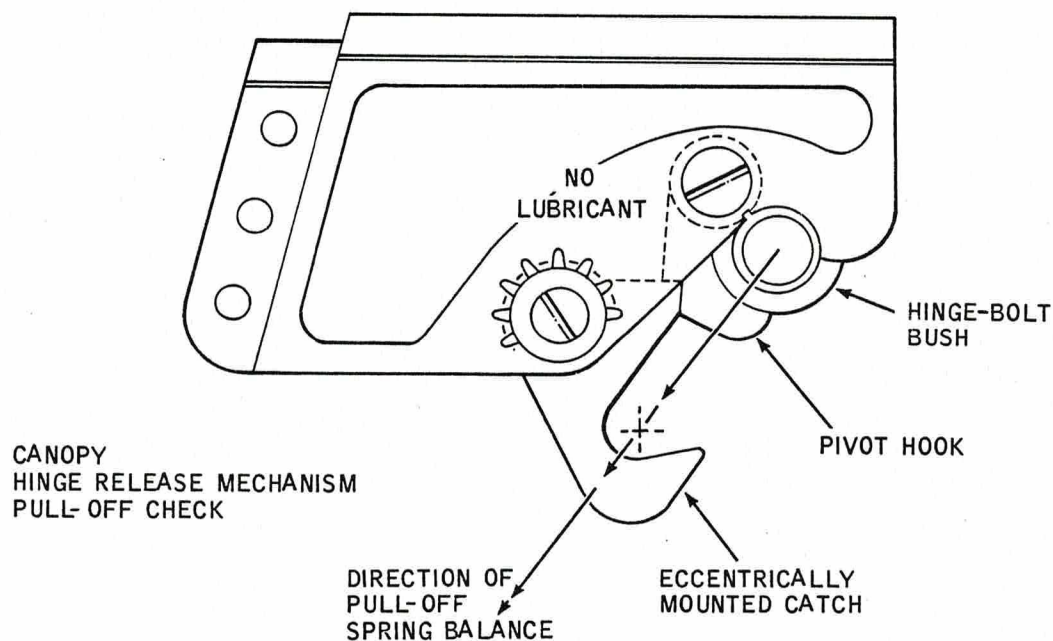


CHAP 1 AIRFRAME SP 6B AL 8 SHEET 1 OF 9	SERVICING PROCEDURE T55	BAC F53 & T55 (SA) 5A3A Section 1 2nd Edition
Canopy - Fitting	AFSC 42251 43171 43151 42272 42252 53450 32851	TIME EST
Safety and Servicing Notes are to be complied with throughout the work detailed on this card.		
<p>SPECIAL TOOLS AND EQUIPMENT</p> <p>Canopy sling (26DK/95264). Spring balance (1A/4707675). Multi purpose servicing hoist (4GC/4232366). Jib No. 3 (4GC/4232396).</p> <p style="text-align: center;"><u>53450</u></p> <p>NOTE 1: If previous canopy was jettisoned by use of cartridge-operated firing unit ensure system has been refurbished in accordance with Repair Manual Part 2.</p> <p>NOTE 2: When fitting a new canopy, correct clearance below the rim of the windscreen arch and forward edge of canopy should be obtained by removal or fitment of shims beneath abutment pads.</p> <p style="text-align: center;"><u>43151 / 42252</u></p> <p>1. PREPARATION</p> <p>1.1 Main Battery. Ensure connected.</p> <p>1.2 Battery master switch. Ensure set to OFF.</p> <p>1.3 Canopy hinge release mechanism assembly (See Fig.1). Examine components for fretting and corrosion. Replace as necessary.</p> <p>2. PULL-OFF CHECK</p> <p>2.1 Hinge-bolt bushes (left and right). Fit to canopy hinge release mechanism</p> <p>2.2 Hinge arm bush mechanism (left and right) (See Fig.2). (i) Place hinge bush in profile of hinge arm. (ii) Rotate free pivoted hook to engage outer diameter of bush. (iii) Hold hook in this position.</p> <p>2.3 Eccentrically mounted catch (See Fig.1). (i) Rotate to engage flat on bush retaining hook. (ii) Attach spring balance (1A/4707675).</p>		<p>ASSOCIATED PROCEDURE</p> <p>SP 103 (A) 116 (A) 129 (A) 103 (W) 102 (RA)</p>
		Continued Overleaf
SERVICING PROCEDURE INSPECTION STAGES DO NOT EXCLUDE ADDITIONAL INSPECTION STAGES INCORPORATED AS NECESSARY IN MAINTENANCE CERTIFICATION DOCUMENTS		

CHAP. 1	AIRFRAME	SERVICING PROCEDURE	BAC F53 & T55 (SA)
S.P. 6B	A.L. 4	T55	5A3A Section 1
SHEET 2	OF 9		2nd Edition

Safety and Servicing Notes are to be complied with throughout the work detailed on this card.



CANOPY HINGE RELEASE MECHANISM
PULL-OFF CHECK

FIGURE 1

Continued

SERVICING PROCEDURE INSPECTION STAGES DO NOT EXCLUDE ADDITIONAL INSPECTION STAGES INCORPORATED AS NECESSARY IN MAINTENANCE CERTIFICATION DOCUMENTS

CHAP 1 AIRFRAME	SERVICING PROCEDURE	B A C F 53 & T 55 (SA)
SP 6B AL 4	T55	5A3A Section 1
SHEET 3 OF 9		2nd Edition

Safety and Servicing Notes are to be complied with throughout the work detailed on this card.

43151/42252

2. PULL-OFF CHECK (Contd)

- 2.3 Eccentrically mounted catch (Contd).
- (iii) With a straight pull dislodge catch and permit free movement of bush retaining hook.
 - (iv) Ensure spring balance reading is between 50 and 90 lbs.

NOTE: Sub-items 2.4 to 2.6 are applicable only if reading at Sub-item 2.3 is not obtained.

- 2.4 Eccentrically mounted catch bush. Withdraw countersunk bolt until locking tab is clear of locking recess.
- 2.5 Eccentric bush.
- (i) Rotate to move catch pivot point forward.
 - (ii) Rotate to increase or decrease the pressure on catch hook until loading is correct.
 - (iii) Tighten countersunk bolt until locking tab is fully engaged with one of radial recesses in hinge arm.
- 2.6 Countersunk bolt. Relock by centre popping.

43171/42272 (INSPECTORS)

3. INSPECTION STAGE - ASSEMBLY CHECK

- 3.1 Inspect eccentrically mounted catch. Ensure correctly assembled and locked.

43151/42252

4. PREPARATION

- 4.1 Canopy lifting eye-bolts. Screw in fully by hand.
- 4.2 Canopy sling (26DK/95264). Fit.

Continued Overleaf

SERVICING PROCEDURE INSPECTION STAGES DO NOT EXCLUDE ADDITIONAL INSPECTION STAGES INCORPORATED AS NECESSARY IN MAINTENANCE CERTIFICATION DOCUMENTS

CHAP 1 AIRFRAME	SERVICING PROCEDURE	BAC F53 & T55 (SA)
SP 6B AL 4	T55	5A3A Section 1
SHEET 4 OF 9		2nd Edition

Safety and Servicing Notes are to be complied with throughout the work detailed on this card.

43151/42252

4. PREPARATION

- 4.3 Canopy lifting eye-bolts. Align with sling.
- 4.4 Multi-purpose servicing hoist with No.3 Jib. Connect to sling.
- 4.5 Air drier blanks. Remove.

43171/42272 (INSPECTORS)

5. INSPECTION STAGE - ASSEMBLY CHECK

- 5.1 Inspect bush hook and catch (left and right). Ensure correctly fitted and locked.

43151/42252

6. FITTING

- 6.1 Canopy.
 - (i) Raise.
 - (ii) Position on aircraft in half-open position.
- 6.2 Hinge bolt anchor nuts.
 - (i) Ensure clean.
 - (ii) Apply loctite and lockquic activator DTD/900/4588 the threads.
- 6.3 Hinge bolts.
 - (i) Ensure clean.
 - (ii) Refit.

43171/42272 (INSPECTORS)

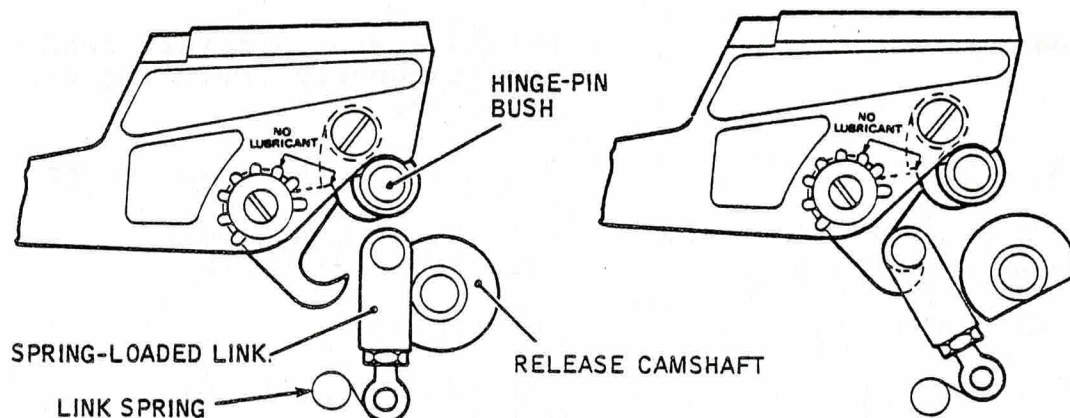
7. INSPECTION STAGE - ASSEMBLY CHECK

- 7.1 Inspect hinge release counter shaft (See Fig.2). Ensure left and right release camshaft flat is bearing on spring-loaded links in spring hinge box.

Continued

SERVICING PROCEDURE INSPECTION STAGES DO NOT EXCLUDE ADDITIONAL INSPECTION STAGES INCORPORATED AS NECESSARY IN MAINTENANCE CERTIFICATION DOCUMENTS

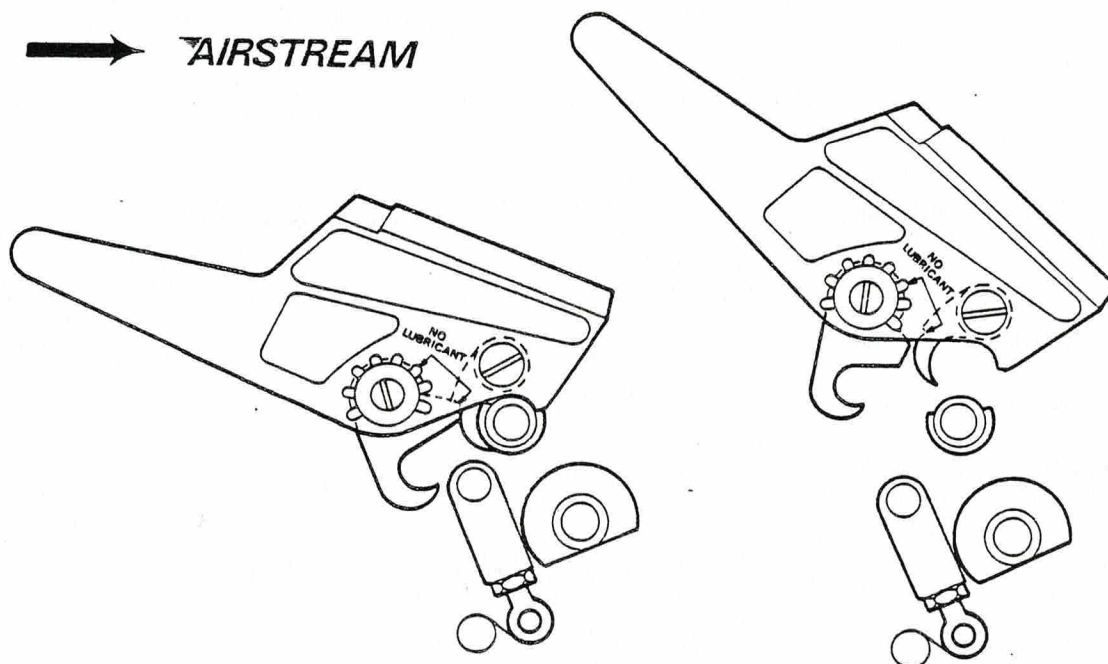
Safety and Servicing Notes are to be complied with throughout the work detailed on this card.



MECHANISM NORMAL

MECHANISM COCKED

➔ **AIRSTREAM**



CANOPY LIFTED BY JETTISONING JACKS

CANOPY SEPARATED FROM AIRCRAFT

CANOPY JETTISON MECHANISM

FIGURE 2

Continued Overleaf

CHAP	1	AIRFRAME	SERVICING PROCEDURE	BAC F53 & T55 (SA)
SP	6B	AL	T55	5A3A Section 1
SHEET	6	OF		2nd Edition

Safety and Servicing Notes are to be complied with throughout the work detailed on this card.

43151/42252

8. FITTING

- | | |
|--|---|
| 8.1 Canopy jack ram. | Extend, using aircraft hand-pump simultaneously operating canopy selector. |
| 8.2 Jack end-fitting. | Reconnect to release mechanism. |
| 8.3 Air drier hose (left and right) (See Fig.3) | (i) Refit banjo bolts.
(ii) Lock with wire. |
| 8.4 Floodlight leads. | Reconnect. |
| 8.5 IFF aerial connector from aerial to rear bulkhead. | (i) Reconnect to aerial.
(ii) Ensure secured to canopy demisting pipe with a minimum of 3 cleats of Hellermann strapping and does not foul structure during operation. |

32851

9 TESTING

- | | |
|-----------------------|----------------------|
| 9.1 IFF installation. | Test (SP 102 (RAD)). |
|-----------------------|----------------------|

43151/42252

10 GENERAL

- | | |
|---|---------|
| 10.1 Handling equipment. | Remove. |
| 10.2 Canopy eye-bolts socket blanking screws. | Refit. |

43171/42272 (INSPECTORS)

11. INSPECTION STAGE - ASSEMBLY CHECK

- | | |
|----------------------------|--|
| 11.1 Bush lock and catch. | Using torch and mirror ensure correctly fitted and locked. |
| 11.2 Jack attachment bolt. | Ensure correctly assembled and locked. |

Continued

SERVICING PROCEDURE INSPECTION STAGES DO NOT EXCLUDE ADDITIONAL INSPECTION STAGES INCORPORATED AS NECESSARY IN MAINTENANCE CERTIFICATION DOCUMENTS

CHAP 1 AIRFRAME	SERVICING PROCEDURE	BAC F53 & T55 (SA)
SP 6B AL 9	T55	5A3A Section 1
SHEET 7 OF 9		2nd Edition

Safety and Servicing Notes are to be complied with throughout the work detailed on this card.

NOTE: Items 12 and 13 are applicable only if a replacement canopy has been fitted.

5 3 6 7 0 (INSPECTOR)

12. TESTING

12.1 Hook/roller assembly. Carry out NDT/LTG/1.

4 3 1 7 1 / 4 2 2 7 2

13. INSPECTION STAGE

13.1 Hook/roller assembly Where vertical clearance between hook and roller exceeds 0.025 ins. (0.625 mm) max. carry out BAC 53-55 (SA)-10 PT2. Leaflet B1/11.

4 3 1 5 1 / 4 2 2 5 2

14. TESTING

14.1 Canopy system. Test (SP 103 AF)).

4 2 2 5 1 / 4 3 1 5 1

NOTE: Item 13 is applicable only if a replacement canopy has been fitted.

15. TESTING

15.1 Cabin pressurization. Test (SP 116B (AF)).

4 3 1 7 1 / 4 2 2 7 2 (INSPECTORS)

16. INSPECTION STAGE - ASSEMBLY CHECK

16.1 Inspect canopy. Close hydraulically ensuring lock closes with shoot bolts.

16.2 Shoot bolts. (i) Ensure penetrate windscreen arch by (0.35 in. side shoot bolts) and (1.10 in top shoot bolt).
(ii) Release.
(iii) Ensure no excessive force is required to engage or disengage.

16.3 Canopy. Open, using aircraft hand-pump.

17. INSPECTION STAGE

17.1 Canopy fitting. Independent check (SP 129 (AF)).

Continued Overleaf

SERVICING PROCEDURE INSPECTION STAGES DO NOT EXCLUDE ADDITIONAL INSPECTION STAGES INCORPORATED AS NECESSARY IN MAINTENANCE CERTIFICATION DOCUMENTS

CHAP	1	AIRFRAME	SERVICING PROCEDURE	BAC F53 & T55 (SA)
SP	6B	AL 9	T55	5A3A Section 1
SHEET	8	OF 9		2nd Edition

Safety and Servicing Notes are to be complied with throughout the work detailed on this card.

4 3 1 5 1 / 4 2 2 5 2

18. COMPLETION

- 18.1 Fibreglass breakaway panels (left and right). Refit (See Fig.3).
- 18.2 Access Panels 22P (left) 22S (right). Refit (See Fig.3).
- 18.3 Safety catch withdrawal cable. Connect to canopy (See Fig.3).

4 2 2 7 2 (INSPECTOR

19. INSPECTION STAGE

- 19.1 Ejection seat (left and right). Independent Check (SP 103 (W)).

NOTE: All wirelocking to be of 22 SWG stainless steel wire unless otherwise stated.

Continued

SERVICING PROCEDURE INSPECTION STAGES DO NOT EXCLUDE ADDITIONAL INSPECTION STAGES INCORPORATED AS NECESSARY IN MAINTENANCE CERTIFICATION DOCUMENTS

CHAP 1 AIRFRAME

SP 6B AL 4

SHEET 9 OF 9

SERVICING PROCEDURE

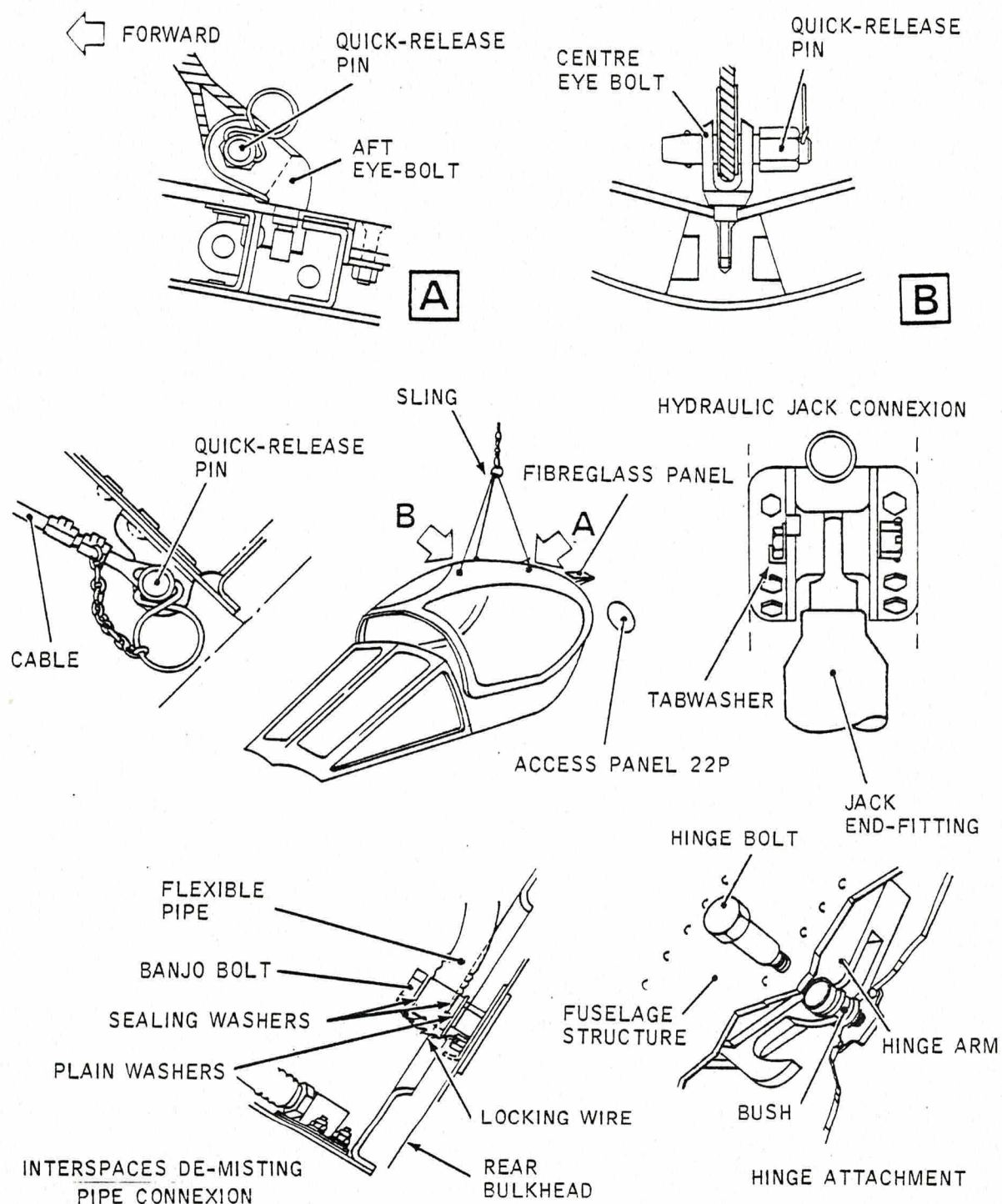
T55

BAC F53 & T55 (SA)

5A3A Section 1

2nd Edition

Safety and Servicing Notes are to be complied with throughout the work detailed on this card.



CANOPY - REFIT
FIGURE 3

SERVICING PROCEDURE INSPECTION STAGES DO NOT EXCLUDE ADDITIONAL INSPECTION STAGES INCORPORATED AS NECESSARY IN MAINTENANCE CERTIFICATION DOCUMENTS

846-737 & 733-55

REVISIONS PAGE 10-14

10-14

10-14

10-14

10-14

10-14

10-14

10-14

This file was downloaded
from the RTFM Library.
Link: www.scottbouch.com/rtfm

Please see site for usage terms,
and more aircraft documents.

