

CHAP 2 AIRFRAME				SERVICING PROCEDURE		BAC F53 & T55 (SA)			
SP 103 AL 4				F53 T55		5A3A Section 1			
SHEET 1 OF 6				2nd Edition					
Canopy - Functional Check						AFSC		TIME EST	
Safety and Servicing Notes are to be complied with throughout the work detailed on this card.						43151 42252			
						43171 42272			
SPECIAL TOOLS AND EQUIPMENT								ASSOCIATED PROCEDURES	
Tyre inflation rig (4G/1050542). Override gauge Mk53 (26DK/95406). Override gauge Mk55 (26DK/95746).								SP603 (AF)	
<u>43151</u>									
1. PREPARATION									
1.1 Ground air charging/ release connexion (Access panel 63P(left)).				Remove blank.					
1.2 Services system hydraulic pressure.				Release pressure by operating brake lever.					
1.3 Hydraulic test trolley.				(i) Prime. (ii) Bleed.					
1.4 No.1 services ground test connexions (Access panel 45P(left)).				Connect hydraulic test trolley.					
1.5 Hydraulic services reservoir.				Replenish (SP 603(AF)).					
1.6 Tyre inflation rig (4G/1050542).				(i) Connect to ground air charging/release connexions. (ii) Set rig to deliver a pressure of between 16 and 18 lbf/in2.					
1.7 External d.c. power supply.				(i) Connect. (ii) Set to ON.					
<u>43151/42252</u>									
2. TESTING									
2.1 Indicator lamp.				Ensure correct indication in relation to operating rod position use gauge (26DK/95406) for Mk53 aircraft (See Fig.1) and gauge (26DK/95746) for T55 aircraft (See Fig.2).					
								Continued Overleaf	
SERVICING PROCEDURE INSPECTION STAGES DO NOT EXCLUDE ADDITIONAL INSPECTION STAGES INCORPORATED AS NECESSARY IN MAINTENANCE CERTIFICATION DOCUMENTS									

CHAP 2 AIRFRAME	SERVICING PROCEDURE	BAC F53 & T55 (SA)
SP 103 AL 4	F53 T55	5A3A Section 1
SHEET 2 OF 6		2nd Edition

Safety and Servicing Notes are to be complied with throughout the work detailed on this card.

43151/42252

2. TESTING (contd)	
2.2 Canopy seal guards.	Remove.
2.3 Jack safety strut.	Remove.
2.4 Services system accumulators.	Pressurize to 3000 lbf/in2 using hydraulic test trolley running at 3750 rev/min.
2.5 Canopy selector toggle switch (Internal).	(i) Set to CLOSE. (ii) Check that time taken to close is between 3 and 5 secs (F53) or 6 and 8 secs (T55). (iii) Ensure seated correctly.
2.6 Canopy.	Lock.
2.7 Shoot-bolts indicator.	Ensure indicating LOCKED.
2.8 Audible warning.	Ensure functioning correctly during closing of canopy.
2.9 Indicator lamp.	Ensure extinguished.
2.10 Canopy.	Unlock.
2.11 Shoot-bolts indicator.	Ensure indicating UNLOCKED.
2.12 Canopy selector toggle switch (Internal).	(i) Set to OPEN. (ii) Check time to open is between 3 and 5 secs (F53) or 7 and 9 secs (T55).
2.13 Audible warning.	Ensure functioning correctly during opening of canopy.
2.14 Indicator lamp.	Ensure lit.
2.15 Canopy selector toggle switch (External).	(i) Set to CLOSE. (ii) Check that time taken is between 3 and 5 secs (F53) or 6 and 8 secs (T55). (iii) Ensure fitting correctly.
2.16 Canopy locking lever (External).	Set to LOCK.
2.17 Shoot bolts indicator.	Ensure indicating LOCKED.

Continued

SERVICING PROCEDURE INSPECTION STAGES DO NOT EXCLUDE ADDITIONAL INSPECTION STAGES INCORPORATED AS NECESSARY IN MAINTENANCE CERTIFICATION DOCUMENTS

CHAP. 2	AIRFRAME	SERVICING PROCEDURE	BAC F53 & T55 (SA)
S.P. 103	A.L. 4	F53 T55	5A3A Section 1
SHEET 3	OF 6		2nd Edition

Safety and Servicing Notes are to be complied with throughout the work detailed on this card.

43151/42252

2. TESTING (Contd)

- | | |
|---|---|
| 2.18 Audible warning. | Ensure functioning correctly during closing of canopy. |
| 2.19 Indicator lamp. | Ensure extinguished. |
| 2.20 Canopy locking lever (External). | Set to UNLOCK. |
| 2.21 Shoot-bolts indicator. | Ensure indicating UNLOCKED. |
| 2.22 Canopy selector toggle switch (External). | (i) Set to OPEN.
(ii) Check that time taken to open is between 3 and 5 secs (F53) or 7 and 9 secs (T55). |
| 2.23 Audible warning. | Ensure functioning correctly during opening of canopy. |
| 2.23 Indicator lamp. | Ensure lit. |
| 2.25 Canopy selector toggle switches (Internal and external). | Ensure set to NEUTRAL. |

43171/42272 (INSPECTOR)

3. INSPECTION STAGE

- | | |
|--------------|---|
| 3.1 Inspect. | After component replacement or if the system has been disassembled. |
|--------------|---|

43151/42252

4. COMPLETION

- | | |
|--|--|
| 4.1 Services system hydraulic pressure. | Release by operating brake lever. |
| 4.2 External d.c. power supply. | (i) Set to OFF.
(ii) Disconnect. |
| 4.3 Hydraulic test trolley. | Remove. |
| 4.4 Hydraulic pump quick release connexions (Services system access panel 45P (left)). | (i) Reconnect to aircraft.
(ii) Wirelock. |

Continued Overleaf

SERVICING PROCEDURE INSPECTION STAGES DO NOT EXCLUDE ADDITIONAL INSPECTION STAGES INCORPORATED AS NECESSARY IN MAINTENANCE CERTIFICATION DOCUMENTS

CHAP	2	AIRFRAME	SERVICING PROCEDURE	BAC F53 & T55 (SA)
SP	103	AL	F53	T55
SHEET	4	OF		5A3A Section 1
				2nd Edition

Safety and Servicing Notes are to be complied with throughout the work detailed on this card.

43151/42252

4. COMPLETION (Contd)

- | | | |
|-----|----------------------------------|--|
| 4.5 | Hydraulic reservoirs. | Replenish (SP 603(AF)). |
| 4.6 | Tyre inflation rig (4G/1050542). | (i) Disconnect at ground air charging/release connexion.
(ii) Refit blank and wirelock. |
| 4.7 | Access panels. | Refit. |
| 4.8 | Canopy seal guards. | Refit. |
| 4.9 | Jack safety strut. | Refit. |

NOTE: All wirelocking to be of 22 SWG stainless steel locking wire.

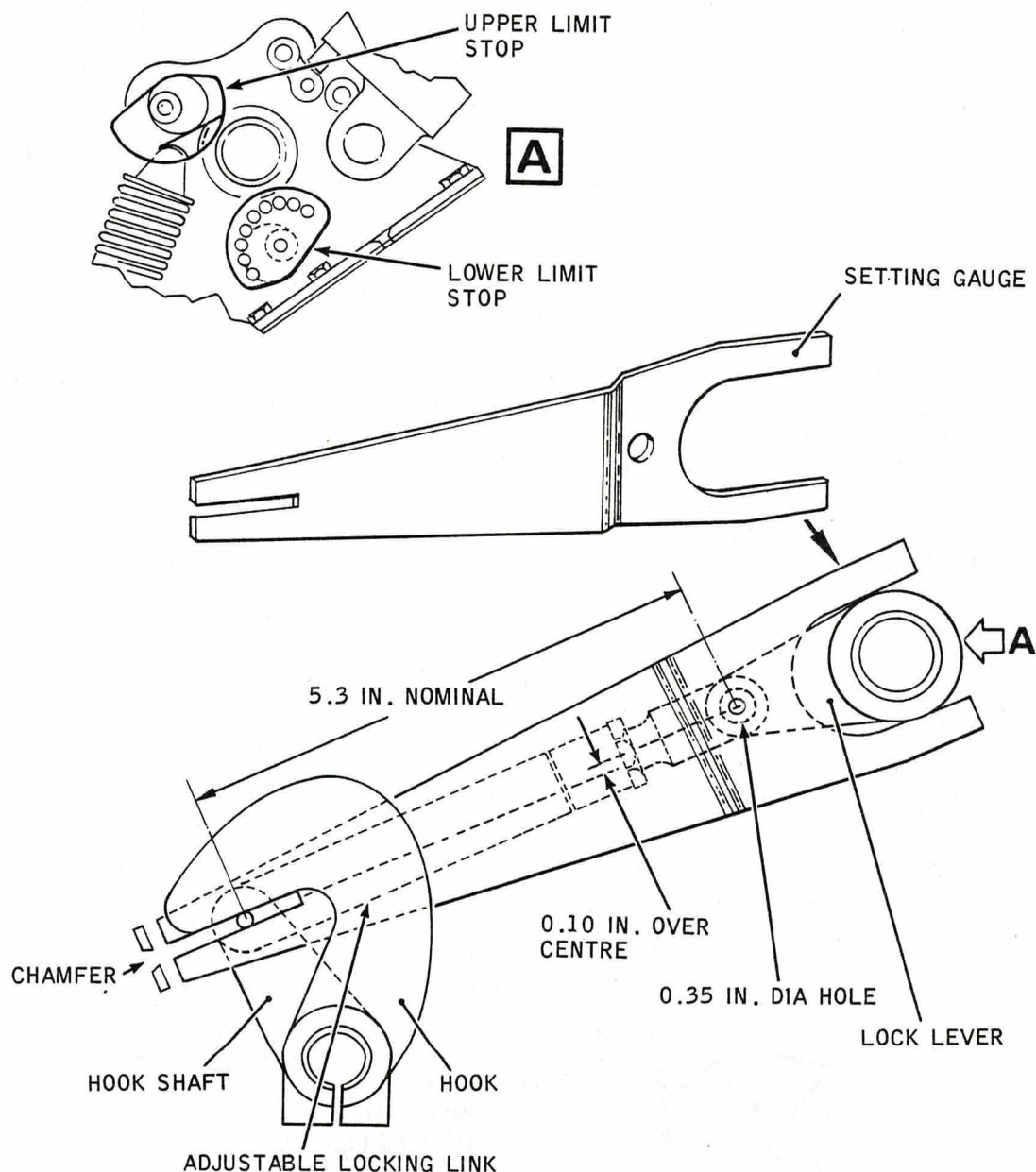
Continued

SERVICING PROCEDURE INSPECTION STAGES DO NOT EXCLUDE ADDITIONAL INSPECTION STAGES INCORPORATED AS NECESSARY IN MAINTENANCE CERTIFICATION DOCUMENTS

Safety and Servicing Notes are to be complied with throughout the work detailed on this card.

NOTE 1: With the canopy open, set the internal control handle to LOCKED. Position setting gauge 26DK/95406 on the outboard side of the adjustable locking link so that the chamfered edges of the slot at the narrow end face inboard.

NOTE 2: The 0.10 in. over centre and the upper limit stop are set correctly when with the shaft stop lever contacting the stop, the aft link pin is lined with the 0.358 in. dia. hole in the gauge.



SETTING TORQUE SHAFT LIMIT STOPS - F53 AIRCRAFT

FIGURE 1

Continued Overleaf

CHAP. 2 AIRFRAME

S.P. 103 A.L. 4

SHEET 6 OF 6

SERVICING PROCEDURE

F53 T55

BAC F53 & T55 (SA)

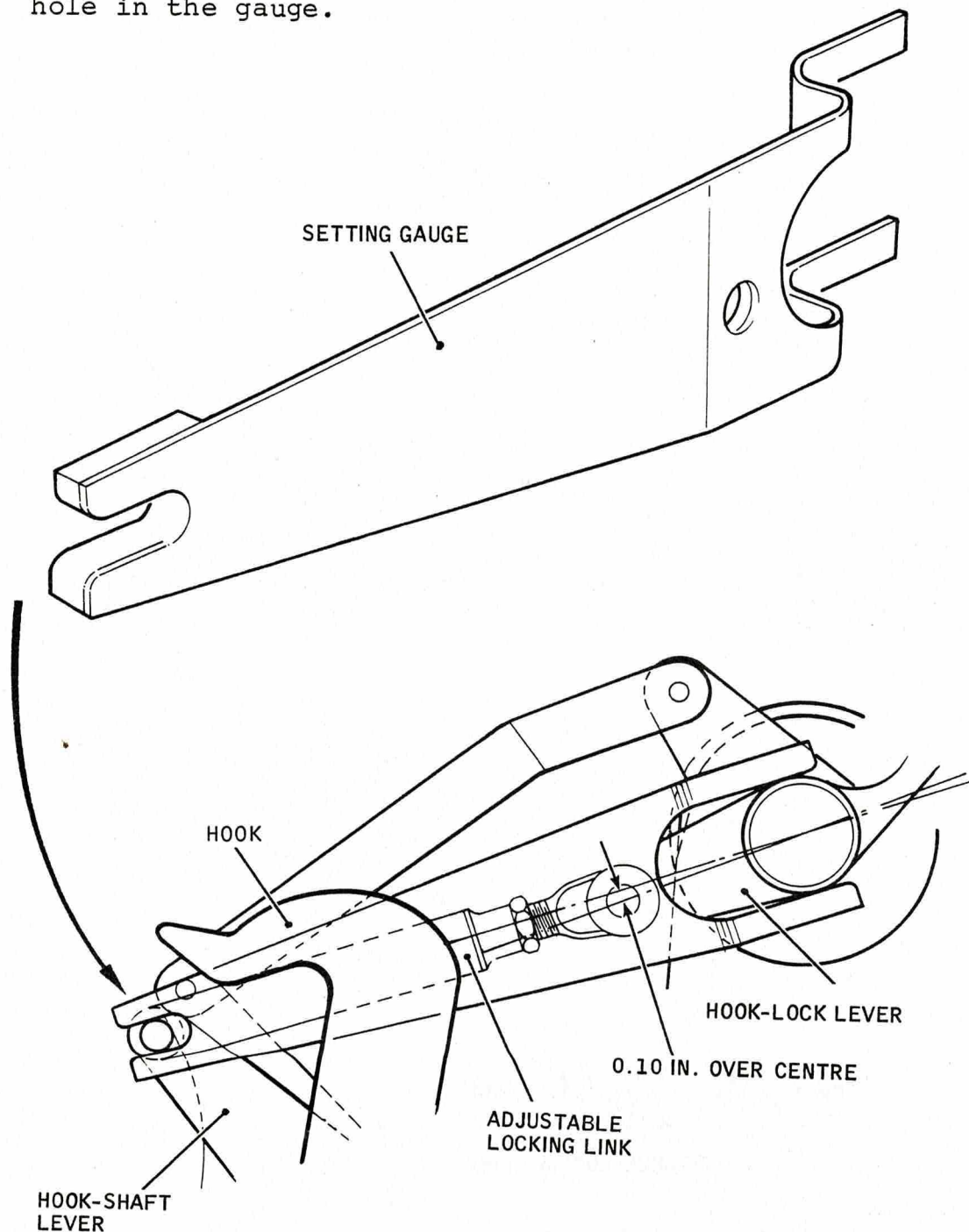
5A3A Section 1

2nd Edition

Safety and Servicing Notes are to be complied with throughout the work detailed on this card.

NOTE 1: With the canopy open set the internal control handle to LOCKED. Position setting gauge 26DK/95746 on the outboard side of the adjustable locking link.

NOTE 2: The 0.10 in. overcentre is correct when the aft pin in the adjustable link is lined up with the 29/64 (0.453) in. dia. hole in the gauge.



CHECKING TORQUE SHAFT OVERCENTRE - T55 AIRCRAFT
FIGURE 2

SERVICING PROCEDURE INSPECTION STAGES DO NOT EXCLUDE ADDITIONAL INSPECTION STAGES INCORPORATED AS NECESSARY IN MAINTENANCE CERTIFICATION DOCUMENTS

This file was downloaded
from the RTFM Library.
Link: www.scottbouch.com/rtfm

Please see site for usage terms,
and more aircraft documents.

