

CHAP 2 AIRFRAME SP 108 AL 4 SHEET 1 OF 10		SERVICING PROCEDURE F53 T55		BAC F53 & T55 (SA) 5A3A Section 1 2nd Edition		
Undercarriage Emergency Lowering				AFSC		TIME EST
Safety and Servicing Notes are to be complied with throughout the work detailed on this card.				43151 43171		
				42152 42172		
SPECIAL TOOLS AND EQUIPMENT						ASSOCIATED PROCEDURES
Pitot static test set Mk3 (6C/1042139). Tyre inflation rig (4G/1050542). Spring balance (1A/4232170). Canopy seal guards F53 (26DK/95129 - Left). Canopy seal guards F53 (26DK/95130 - Right). Canopy seal guards T55 (26DK/95252 - Left). Canopy seal guards T55 (26DK/95253 - Right).						SP603 (AF))
NOTE: During this servicing procedure No.2 engine hatch or jury strut must be fitted at all times.						
<u>43151</u>						
1. PREPARATION						
1.1 Aircraft. (i) Raise on jacks until all wheels are clear of ground. (ii) Trestle at Frame 59.						
<u>43151 / 42152</u>						
2. PREPARATION						
2.1 Ground air charging/ Remove blank. release connexion (Access panel 63P(left)).						
2.2 Services system Release pressure by hydraulic pressure. operating brake lever.						
2.3 Hydraulic test trolleys. (i) Prime. (ii) Bleed.						
2.4 No.1 services ground Connect hydraulic test test connexions trolleys. (Access panel 45P(left)).						
2.5 No.1 controls ground Connect hydraulic test test connexions trolleys. (Access panel 45P(left)).						
						Continued Overleaf
SERVICING PROCEDURE INSPECTION STAGES DO NOT EXCLUDE ADDITIONAL INSPECTION STAGES INCORPORATED AS NECESSARY IN MAINTENANCE CERTIFICATION DOCUMENTS						

CHAP 2 AIRFRAME	SERVICING PROCEDURE	BAC F53 & T55 (SA)
SP 108 AL 4	F53 T55	5A3A Section 1
SHEET 2 OF 10		2nd Edition

Safety and Servicing Notes are to be complied with throughout the work detailed on this card.

43151/42152

2. PREPARATION (Contd)

- | | |
|--|--|
| 2.6 Hydraulic reservoirs. | Replenish (SP 603(AF)). |
| 2.7 Tyre inflation rig.
(4G/1050542). | (i) Connect to ground air charging/release connexion (Access panel 63P(left)).
(ii) Set rig to deliver a pressure of between 16 and 18 lbf/in2. |
| 2.8 Canopy seal guards. | Ensure fitted. |
| 2.9 Slave battery. | Fit. |
| 2.10 Battery isolating switch. | Set to ON. |
| 2.11 Pitot/static test set. | Connect. |
| 2.12 Armament safety break. | (i) Remove from lanyard.
(ii) Stow lanyard and flag in stowage pocket. |
| 2.13 Undercarriage toggle switch. | Ensure set to DOWN. |
| 2.14 Undercarriage ground locks. | Remove. |

3. TESTING

- | | |
|---|---------------------------------------|
| 3.1 Services system. | Pressurize to 3000 lbf/in2. |
| 3.2 Nose undercarriage. | Ensure aligned fore and aft. |
| 3.3 Pitot/static system. | Pressurize to an equivalent of 165Kt. |
| 3.4 Airbrakes. | Open. |
| 3.5 Flaps. | Lower. |
| 3.6 Undercarriage toggle switch. | Set to UP. |
| 3.7 Undercarriage indicator lamps (F53: quantity 3, T55: quantity 6). | Ensure extinguished. |
| 3.8 Services system test trolley. | Stop. |
| 3.9 Pitot/static system. | Release pressure. |

Continued

SERVICING PROCEDURE INSPECTION STAGES DO NOT EXCLUDE ADDITIONAL INSPECTION STAGES INCORPORATED AS NECESSARY IN MAINTENANCE CERTIFICATION DOCUMENTS

CHAP. 2	AIRFRAME	SERVICING PROCEDURE	BAC F53 & T55 (SA)
S.P. 108	A.L. 4	F53	T55
SHEET 3	OF 10		5A3A Section 1 2nd Edition

Safety and Servicing Notes are to be complied with throughout the work detailed on this card.

43151/42152

3. TESTING (Contd)

3.10 No.1 controls sytem. Pressurize to 3000 lbf/in2.

3.11 Undercarriage emergency lowering handle
(F53 - See Fig.1),
(T55 - See Fig.2).

(i) Set to down using spring balance 1A/5232170.
(ii) Check max force required to pull lever is 20 lbs.

NOTE: Maximum force to operate release button is 5 lbs.

3.12 Undercarriage. Check time taken to lower and lock does not exceed 21 secs.

3.13 Undercarriage indicator lamps (F53: quantity 3, F55: quantity 6).

(i) Ensure lit, RED whilst undercarriage is lowering.
(ii) Ensure lit (GREEN) when undercarriage is locked down.

3.14 Controls system test trolley. Stop.

3.15 Undercarriage toggle switch. Set to DOWN.

4. RESETTING PROCEDURE

NOTE 1 : Sub-items 4.1 and 4.2 must be carried out simultaneously.

NOTE 2 : During Sub-item 4.1 the cable is to be tensioned by pulling aft of access panel 26P (left) F53, access panel 20P (left) T55, to avoid kinking of cable at cockpit undercarriage emergency lowering handle.

4.1 Undercarriage emergency lowering handle.

(i) Reset to unoperated position (pushed in and spring loaded plunger engaged).
(ii) Fit indicator wire, 28 SWG enamelled copper wire (See Fig.3).

4.2 Emergency selector valve lever
Access panel 26P (left-F53),
Access panel 20P (left-T55).

Reset to unoperated position.

4.3 Spring loaded cam
(See Fig.4).

Ensure ball race on end of selector lever is correctly positioned on cam.

Continued Overleaf

SERVICING PROCEDURE INSPECTION STAGES DO NOT EXCLUDE ADDITIONAL INSPECTION STAGES INCORPORATED AS NECESSARY IN MAINTENANCE CERTIFICATION DOCUMENTS

CHAP 2 AIRFRAME
SP 108 AL 4
SHEET 4 OF 10

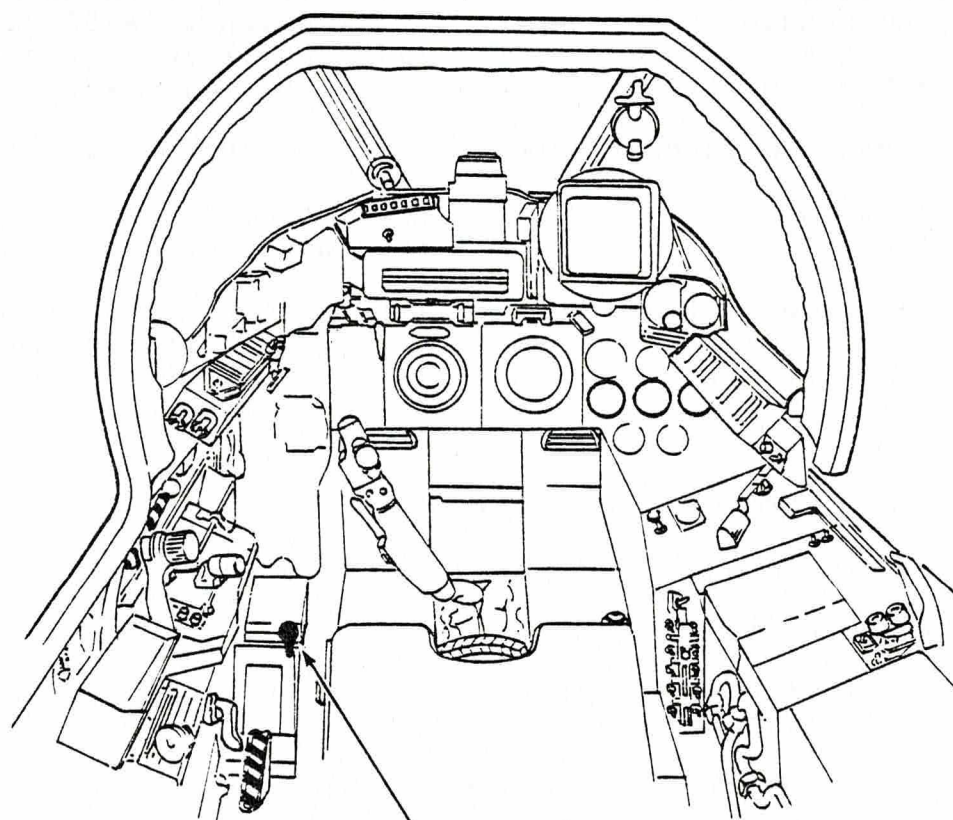
SERVICING PROCEDURE

F53 T55

BAC F53 & T55 (SA)

5A3A Section 1
2nd Edition

Safety and Servicing Notes are to be complied with
throughout the work detailed on this card.



EMERGENCY
LOWERING
SELECTOR
HANDLE

COCKPIT LAYOUT MK F53
FIGURE 1

Continued

SERVICING PROCEDURE INSPECTION STAGES DO NOT EXCLUDE ADDITIONAL INSPECTION STAGES
INCORPORATED AS NECESSARY IN MAINTENANCE CERTIFICATION DOCUMENTS

CHAP. 2 AIRFRAME
S.P. 108 A.L. 4
SHEET 5 OF 10

SERVICING PROCEDURE

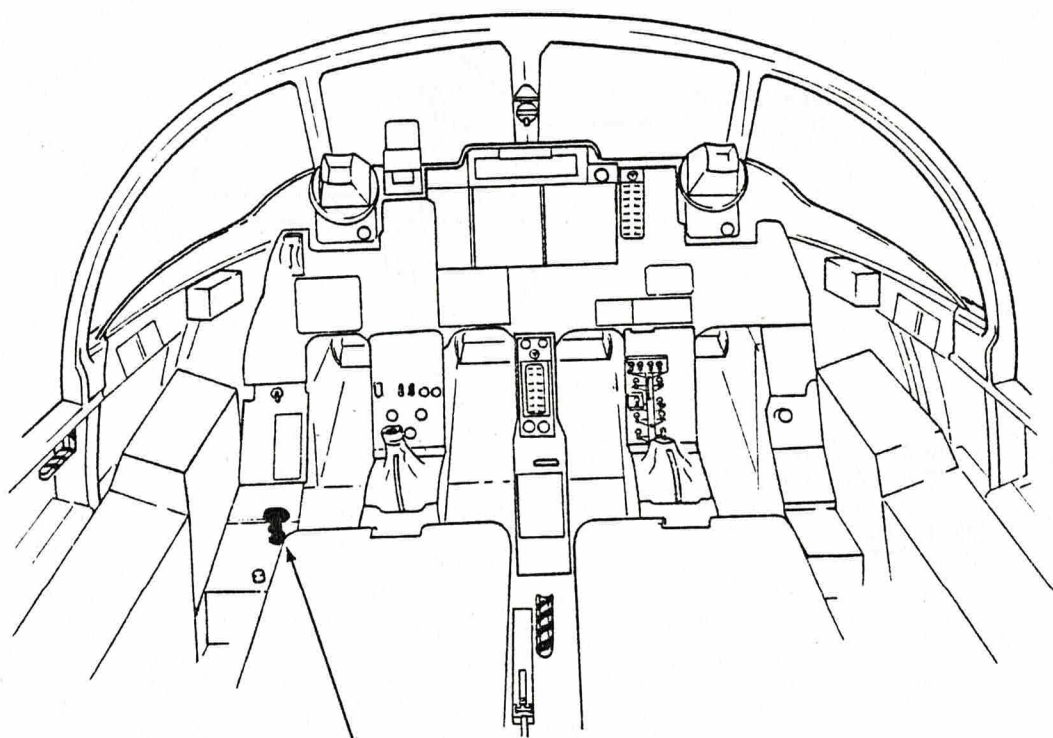
F53

T55

BAC F53 & T55 (SA)

5A3A Section 1
2nd Edition

Safety and Servicing Notes are to be complied with
throughout the work detailed on this card.



EMERGENCY UNDERCARRIAGE
SELECTOR HANDLE

COCKPIT LAYOUT MK T55
FIGURE 2

Continued Overleaf

SERVICING PROCEDURE INSPECTION STAGES DO NOT EXCLUDE ADDITIONAL INSPECTION STAGES
INCORPORATED AS NECESSARY IN MAINTENANCE CERTIFICATION DOCUMENTS

CHAP. 2 AIRFRAME

S.P. 108 A.L. 4

SHEET 6 OF 10

SERVICING PROCEDURE

F53

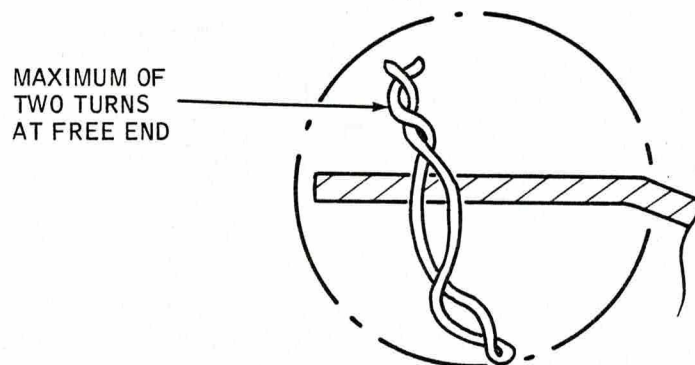
T55

BAC F53 & T55 (SA)

5A3A Section 1

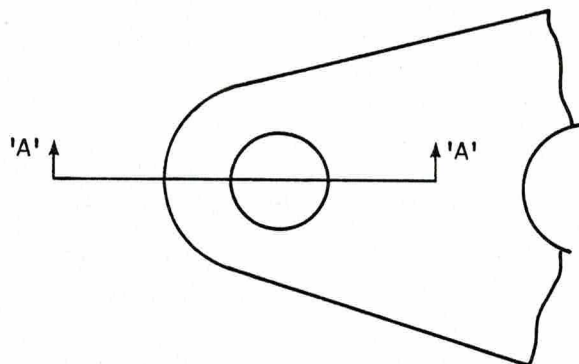
2nd Edition

Safety and Servicing Notes are to be complied with throughout the work detailed on this card.



TYPICAL SECTION THROUGH ANCHOR LUG SHOWING METHOD OF APPLICATION

SECTION A-A



EMERGENCY UNDERCARRIAGE HANDLE STANDARD APPLICATION OF INDICATOR WIRES

FIGURE 3

Continued

SERVICING PROCEDURE INSPECTION STAGES DO NOT EXCLUDE ADDITIONAL INSPECTION STAGES INCORPORATED AS NECESSARY IN MAINTENANCE CERTIFICATION DOCUMENTS

CHAP. 2 AIRFRAME	SERVICING PROCEDURE	BAC F53 & T55 (SA)
S.P. 108 A.L. 4	F53 T55	5A3A Section 1
SHEET 7 OF 10		2nd Edition

Safety and Servicing Notes are to be complied with throughout the work detailed on this card.

43151/42152

4. RESETTING PROCEDURE (Contd)

- 4.4 Emergency selector valve lever. Using probe light and mirror ensure hard against rear end of slot.
- 4.5 Operating cable (See Fig.4). (i) Ensure lying in guard channel.
(ii) Ensure red marker band on the cable is in alignment with red marker band on the inside of the cable guard.
- 4.6 Services system. Pressurize to 3000 lbf/in² to reset shuttle and relay valve.
- 4.7 Protection unit indicator rod. Ensure protruding at bottom of protection unit.
- 4.8 Airbrakes. Close.
- 4.9 Flaps. Raise.

NOTE: During sub-items 4.8 and 4.9 measure quantity of fluid emitted from No.1 services reservoir overboard drain using suitable container. The measured quantity should be approximately 5 pints.

- 4.10 Services system test trolley. Stop.

43171/42172 (INSPECTOR)

5. INSPECTION STAGE

- 5.1 Inspect. After component replacement or if the system has been disassembled.

43151/42152

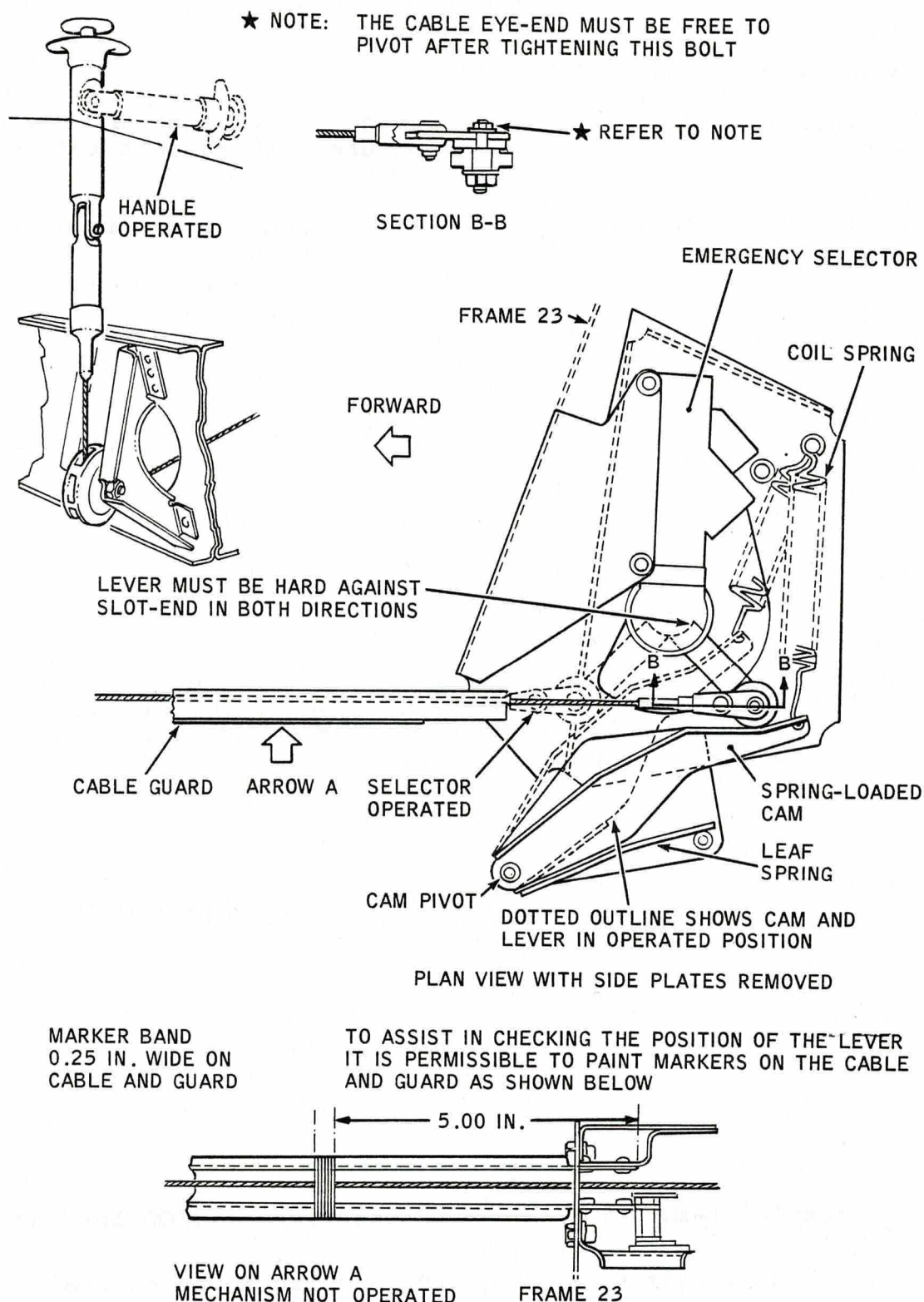
6. GENERAL

- 6.1 Services system. Pressurize to 3000 lbf/in².
- 6.2 Pitot/static system. Pressurize to an equivalent of more than 165 Kt.

Continued Overleaf

SERVICING PROCEDURE INSPECTION STAGES DO NOT EXCLUDE ADDITIONAL INSPECTION STAGES INCORPORATED AS NECESSARY IN MAINTENANCE CERTIFICATION DOCUMENTS

Safety and Servicing Notes are to be complied with throughout the work detailed on this card.



ADJUSTMENT OF ALIGHTING GEAR EMERGENCY LOWERING CONTROL

FIGURE 4

Continued

CHAP. 2	AIRFRAME	SERVICING PROCEDURE		BAC F53 & T55 (SA)
S.P. 108	A.L. 4	F53	T55	5A3A Section 1
SHEET 9	OF 10	2nd Edition		

Safety and Servicing Notes are to be complied with throughout the work detailed on this card.

43151/42152

6. GENERAL (Contd)

6.3 Undercarriage. Carry out minimum of two full retractions and lowerings.

6.4 Services test trolley. Stop.

43171/42172 (INSPECTORS)

7. INDEPENDENT CHECKS.

NOTE: The independent checks detailed in this item are to ensure that the Hydel selector slide valve is correctly positioned and must be carried out personally by a specialist inspector who has not been directly concerned with the operations detailed in this servicing procedure.

7.1 Undercarriage toggle switch. Ensure set to DOWN.

7.2 Services system. Pressurize to 3000 lbf/in2.

7.3 Undercarriage indicator lamps (green), (F53: quantity 3, T55: quantity 6). Ensure lit.

7.4 Undercarriage ground locks. Fit.

7.5 Aircraft job card. Endorse as follows:
 Certified I have personally carried out the independent checks detailed in servicing procedure BAC F53 and T55 (SA), 5A3A Section 1 SP108 (AF).

43151/42152

8. COMPLETION

8.1 Pitot/static test set. (i) Release pressure.
 (ii) Disconnect.

8.2 Services system. Release pressure by operating brake lever.

Continued Overleaf

SERVICING PROCEDURE INSPECTION STAGES DO NOT EXCLUDE ADDITIONAL INSPECTION STAGES INCORPORATED AS NECESSARY IN MAINTENANCE CERTIFICATION DOCUMENTS

CHAP 2	AIRFRAME	SERVICING PROCEDURE	BAC F53 & T55 (SA)
SP 108	AL 4	F53 T55	5A3A Section 1
SHEET 10	OF 10		2nd Edition

Safety and Servicing Notes are to be complied with throughout the work detailed on this card.

43151/42152

8. COMPLETION (Contd)

- | | |
|--|--|
| 8.3 Battery isolating switch. | Set to OFF. |
| 8.4 Slave battery. | Remove. |
| 8.5 Ground equipment. | (i) Operate to lower aircraft to ground.
(ii) Remove from vicinity of aircraft. |
| 8.6 Tyre inflation rig (4G/1050542). | (i) Disconnect at ground air charging/release connexion.
(ii) Fit blank and wirelock. |
| 8.7 Hydraulic test trolleys. | (i) Disconnect.
(ii) Remove. |
| 8.8 Hydraulic pump quick release connexions (Services and controls Access panel 45P (left)). | (i) Reconnect to aircraft.
(ii) Wirelock. |
| 8.9 Hydraulic reservoirs. | Replenish (SP 603(AF)). |
| 8.10 Access panels. | Refit. |
| 8.11 Canopy seal guards. | Remove. |
| 8.12 Armament safety break. | (i) Remove flag and lanyard from stowage.
(ii) Reconnect lanyard. |

NOTE: All wirelocking to be of 22 SWG stainless steel locking wire unless otherwise stated.

This file was downloaded
from the RTFM Library.

Link: www.scottbouch.com/rtfm

Please see site for usage terms,
and more aircraft documents.

