

CHAP 2 AIRFRAME SP 134 AL 4 SHEET 1 OF 6	SERVICING PROCEDURE F53 T55	BAC F53 & T55 (SA) 5A3A Section 1 2nd Edition
Adjustment Of Nose Undercarriage Uplock And Downlock	AFSC 43151 43171 42152 42172	TIME EST
Safety and Servicing Notes are to be complied with throughout the work detailed on this card.		
SPECIAL TOOLS AND EQUIPMENT  Tyre inflation rig (4G/1050542). Plunger adjustment key (26DK/95240).  NOTE: During this servicing procedure No.2 engine hatch, or jury strut must be fitted at all times.  <u>43151</u>		ASSOCIATED PROCEDURES  SP 106 (AF) 602 (AF) 603 (AF)
1. PREPARATION  1.1 Aircraft. (i) Raise on jacks until wheels are clear of ground. (ii) Trestle at Frame 59.  NOTE: Ensure ailerons are in the neutral position.  <u>42152 / 43151</u>		
2. PREPARATION  2.1 Ground air charging/ release connexion (Access panel 63P (left)). Remove blank.  2.2 Services system hydraulic pressure. Release by operating brake lever.  2.3 Hydraulic test trolley. (i) Prime. (ii) Bleed.  2.4 No.1 Services ground test connexions. (Access panel 45P (left)). Connect hydraulic test trolley.  2.5 Hydraulic accumulator (Services). Check pressure (SP 602(AF)).  2.6 Hydraulic reservoir. Replenish (SP 603(AF)).  2.7 Tyre inflation rig (4G/1050542). (i) Connect to ground air charging/release connexion (Access panel 63P (left)).		
		Continued Overleaf
SERVICING PROCEDURE INSPECTION STAGES DO NOT EXCLUDE ADDITIONAL INSPECTION STAGES INCORPORATED AS NECESSARY IN MAINTENANCE CERTIFICATION DOCUMENTS		

CHAP 2 AIRFRAME	SERVICING PROCEDURE	BAC F53 & T55 (SA)
SP 134 AL 4	F53 T55	5A3A Section 1
SHEET 2 OF 6		2nd Edition

Safety and Servicing Notes are to be complied with throughout the work detailed on this card.

42152/43151

2. PREPARATION (Contd)

- |   |   |
|---|---|
| 2.7 Tyre inflation rig (4G/1050542). (Contd)        | (ii) Set rig to deliver a pressure of between 16 and 18 lbf/in <sup>2</sup> . |
| 2.8 Canopy seal guards.                             | Ensure fitted.  |
| 2.9 Undercarriage ground safety locks.              | Ensure fitted.  |
| 2.10 Slave battery.                                 | Fit.  |
| 2.11 Battery isolating switch.                      | Set to ON.  |
| 2.12 Pitot/Static test set.                         | Connect.  |
| 2.13 Undercarriage toggle switch.                   | Ensure set to DOWN.   |
| 2.14 Nose undercarriage rear door.                  | Disconnect.   |
| 2.15 Bottom centre access panel (15(F53), 10(T55)). | Remove.   |
| 2.16 Downlock jack.                                 | (i) Remove.<br>(ii) Blank off hydraulic connexions.                           |

3. ADJUSTMENT

- |   |   |
|---|---|
| 3.1 Nose undercarriage tapered plunger. | (i) Offer downlock jack into position.<br>(ii) Using plunger adjustment key (26DK/95240) adjust tapered plunger to obtain a snug fit. (See Figs.1 and 2). |
|---|---|

NOTE: Rotate clockwise to retract plunger or anti-clockwise to extend.

NOTE: After adjustment ensure locking is obtained by allowing inner spline to re-engage into spherical cap.

- |                    |  |
|--------------------|--|
| 3.2 Downlock jack. | (i) Refit and wirelock bolts.<br>(ii) Bleed and wirelock hydraulic connexions. |
|--------------------|--|

Continued

CHAP 2 AIRFRAME	SERVICING PROCEDURE	BAC F53 & T55 (SA)
SP 134 AL 4	F53 T55	5A3A Section 1
SHEET 3 OF 6		2nd Edition

Safety and Servicing Notes are to be complied with throughout the work detailed on this card.

42152/43151

3. ADJUSTMENT (Contd)

3.3 Nose undercarriage rear door. Reconnect.

42172/43171 (INSPECTORS)

4. INSPECTION STAGE

4.1 Nose undercarriage rear door. Independent check of:  
(i) Assembly.  
(ii) Locking.

42152/43151

5. GENERAL

- 5.1 Pitot/Static system. Pressurize in excess of equivalent of 165 Kt.
- 5.2 Nose undercarriage leg. Remove ground safety lock.
- 5.3 Undercarriage toggle switch. Set to UP.
- 5.4 Nose undercarriage leg. Raise using test trolley hand pump.
- 5.5 Services hydraulic system. Pressurize to 3000 lbf/in2.
- 5.6 Nose undercarriage leg. Ensure indicating up and locked.
- 5.7 Services hydraulic system. Release pressure by operating brake lever.

6. ADJUSTMENT

6.1 Up-lock jack.  
(i) Remove.  
(ii) Blank off hydraulic connexions  
(iii) Offer into position and shim as necessary to obtain engagement of tapered plunger at the same time as the jack seats on mounting bracket (See Fig.2).  
NOTE: Maximum thickness of shim Part No.EB2-41-277 to be 0.050 in.

Continued Overleaf

CHAP 2 AIRFRAME	SERVICING PROCEDURE	BAC F53 & T55 (SA)
SP 134 AL 4	F53 T55	5A3A Section 1
SHEET 4 OF 6		2nd Edition

Safety and Servicing Notes are to be complied with throughout the work detailed on this card.

42152/43151

6. ADJUSTMENT (Contd)

- 6.2 Undercarriage toggle switch. Set to DOWN.
- 6.3 Nose undercarriage leg. Lower using test trolley hand pump.
- 6.4 Services hydraulic system. Pressurize to 3000 lbf/in<sup>2</sup>.
- 6.5 Nose undercarriage leg. Ensure indicating down and locked.

7. GENERAL

- 7.1 Pitot/static test set. Release pressure.
- 7.2 Nose undercarriage ground safety lock. Refit.
- 7.3 Services hydraulic system. Release pressure by operating brake lever.

42172/43171

8. INSPECTION STAGE

- 8.1 Inspect. Independent check of:  
(i) Assembly and locking.  
(ii) Function.

42152/43151

9. TESTING

- 9.1 Undercarriage hydraulic system. Carry out (SP 106(AF)).

NOTE: All wirelocking to be of 22 SWG stainless steel unless otherwise stated.

Continued

SERVICING PROCEDURE INSPECTION STAGES DO NOT EXCLUDE ADDITIONAL INSPECTION STAGES INCORPORATED AS NECESSARY IN MAINTENANCE CERTIFICATION DOCUMENTS

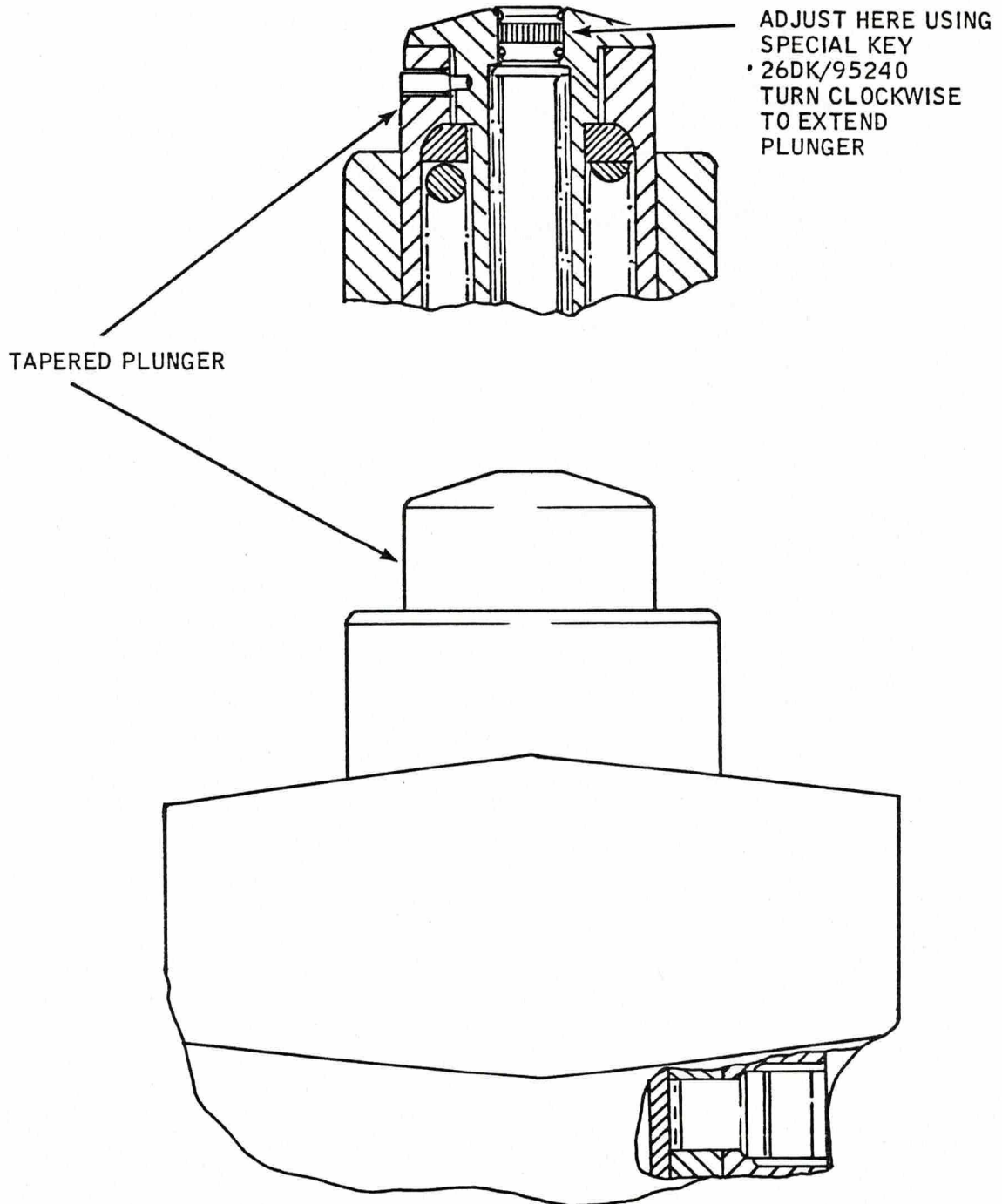
CHAP 2 AIRFRAME  
SP 134 AL 4  
SHEET 5 OF 6

SERVICING PROCEDURE  
F53 T55

B A C F 53 & T 55 (SA)  
5A3A Section 1  
2nd Edition

Safety and Servicing Notes are to be complied with throughout the work detailed on this card.

### DOWN LOCK PLUNGER ADJUSTMENT



DOWNLOCK - PLUNGER ADJUSTMENT

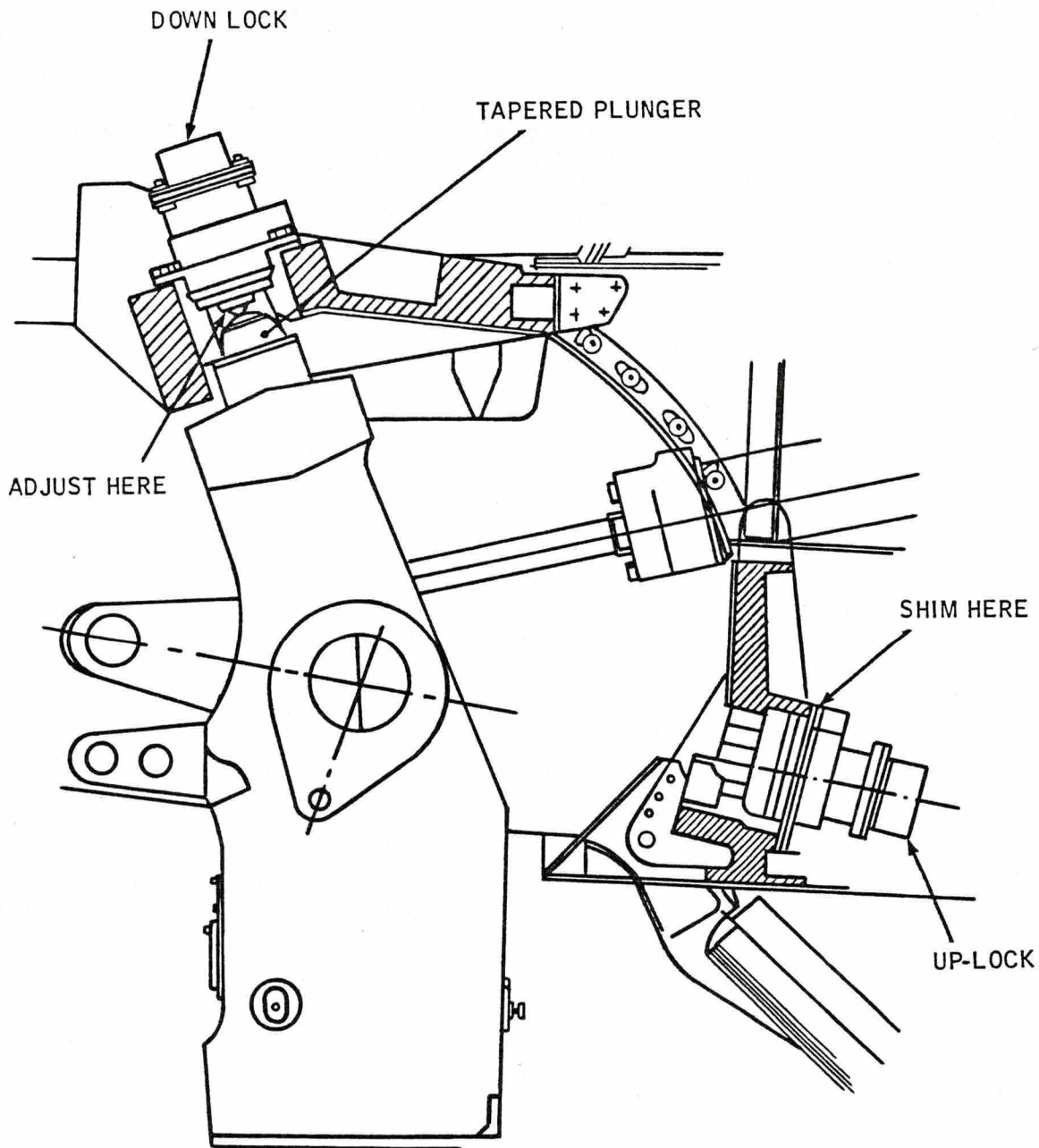
FIGURE 1

Continued Overleaf

SERVICING PROCEDURE INSPECTION STAGES DO NOT EXCLUDE ADDITIONAL INSPECTION STAGES INCORPORATED AS NECESSARY IN MAINTENANCE CERTIFICATION DOCUMENTS

CHAP.	2	AIRFRAME	SERVICING PROCEDURE		BAC F53 & T55 (SA)
S.P.	134	A.L.	F53	T55	5A3A Section 1
SHEET	6	OF			2nd Edition

Safety and Servicing Notes are to be complied with throughout the work detailed on this card.



DOWNLOCK - PLUNGER ADJUSTMENT  
FIGURE 2

SERVICING PROCEDURE INSPECTION STAGES DO NOT EXCLUDE ADDITIONAL INSPECTION STAGES INCORPORATED AS NECESSARY IN MAINTENANCE CERTIFICATION DOCUMENTS



This file was downloaded  
from the RTFM Library.

Link: [www.scottbouch.com/rtfm](http://www.scottbouch.com/rtfm)

Please see site for usage terms,  
and more aircraft documents.