

CHAP 2 AIRFRAME SP 141 AL 4 SHEET 1 OF 6	SERVICING PROCEDURE F53 T55	BAC F53 & T55 (SA) 5A3A Section 1 2nd Edition	
Arrestor Hook Release Unit Functional Check (Hook Not Fitted Or Not Stowed)		AFSC 43151	TIME EST
Safety and Servicing Notes are to be complied with throughout the work detailed on this card.			
SPECIAL TOOLS AND EQUIPMENT  Spring balance 0-56 lbs (1A/1275139).  <u>43151</u>			ASSOCIATED PROCEDURES SP 419 (AF)
<p>1. PREPARATION</p> <p>1.1 External d.c. power supply. (i) Connect. (ii) Set to ON.</p> <p>1.2 Canopy seal guards. Ensure fitted.</p> <p>2. TESTING</p> <p>2.1 Arrestor hook operating handle (See Fig.1-F53) (See Fig.2-T55). Ensure in unoperated position (BAU catch engaged).</p> <p>2.2 Arrestor hook indicator lamp (green) (See Fig.1-F53) (See Fig.2-T55). Ensure lit.</p> <p>2.3 Arrestor hook release unit (See Fig.3) (i) Push T lever to the right applying force at cable to lever connexion (ii) Lock jaws using a suitable bar. (iii) Ensure cocking slide is inset, to a maximum of 0.0625 in relative to outboard face at forward end of unit, using torch and mirror.</p> <p>2.4 Micro-switch plunger (See Fig.3). Depress.</p> <p>2.5 Arrestor hook indicator lamp (green) (See Fig.1-F53) (See Fig.2-T55). Ensure extinguished.</p>			
			Continued Overleaf
SERVICING PROCEDURE INSPECTION STAGES DO NOT EXCLUDE ADDITIONAL INSPECTION STAGES INCORPORATED AS NECESSARY IN MAINTENANCE CERTIFICATION DOCUMENTS			

CHAP 2 AIRFRAME	SERVICING PROCEDURE	BAC F53 & T55 (SA)
SP 141 AL 4	F53 T55	5A3A Section 1
SHEET 2 OF 6		2nd Edition

Safety and Servicing Notes are to be complied with throughout the work detailed on this card.

43151

2. TESTING (Contd)

- |   |   |
|---|---|
| 2.6 Arrestor hook release unit.           | (i) Insert suitable bar into jaws of unit.<br>(ii) With unit centrally disposed apply slight down load by hand.   |
| 2.7 Arrestor hook operating handle.       | (i) Attach spring balance (1A/1275139).<br>(ii) Pull slowly to fully operated position (Ball catch engaged)<br>(iii) Ensure load does not exceed 30 to 45 lbs pull. |
| 2.8 Arrestor hook release unit.           | Ensure jaws open.   |
| 2.9 Arrestor hook indicator lamp (green). | Ensure lit.   |
| 2.10 Arrestor hook operating handle.      | Return to unoperated position (Ball catch engaged).   |

NOTE: Sub-item 2.11 is applicable only if load in Sub-item 2.7 (iii) exceeds 45 lbs.

- |                            |                     |
|----------------------------|---------------------|
| 2.11 Arrestor hook system. | Check (SP 419(AF)). |
|----------------------------|---------------------|

3. COMPLETION

- |                                 |                                     |
|---------------------------------|-------------------------------------|
| 3.1 External d.c. power supply. | (i) Set to OFF.<br>(ii) Disconnect. |
| 3.2 Canopy seal guards.         | Ensure removed.                     |

Continued

SERVICING PROCEDURE INSPECTION STAGES DO NOT EXCLUDE ADDITIONAL INSPECTION STAGES INCORPORATED AS NECESSARY IN MAINTENANCE CERTIFICATION DOCUMENTS

CHAP. 2 AIRFRAME

S.P. 141 A.L. 4

SHEET 3 OF 6

SERVICING PROCEDURE

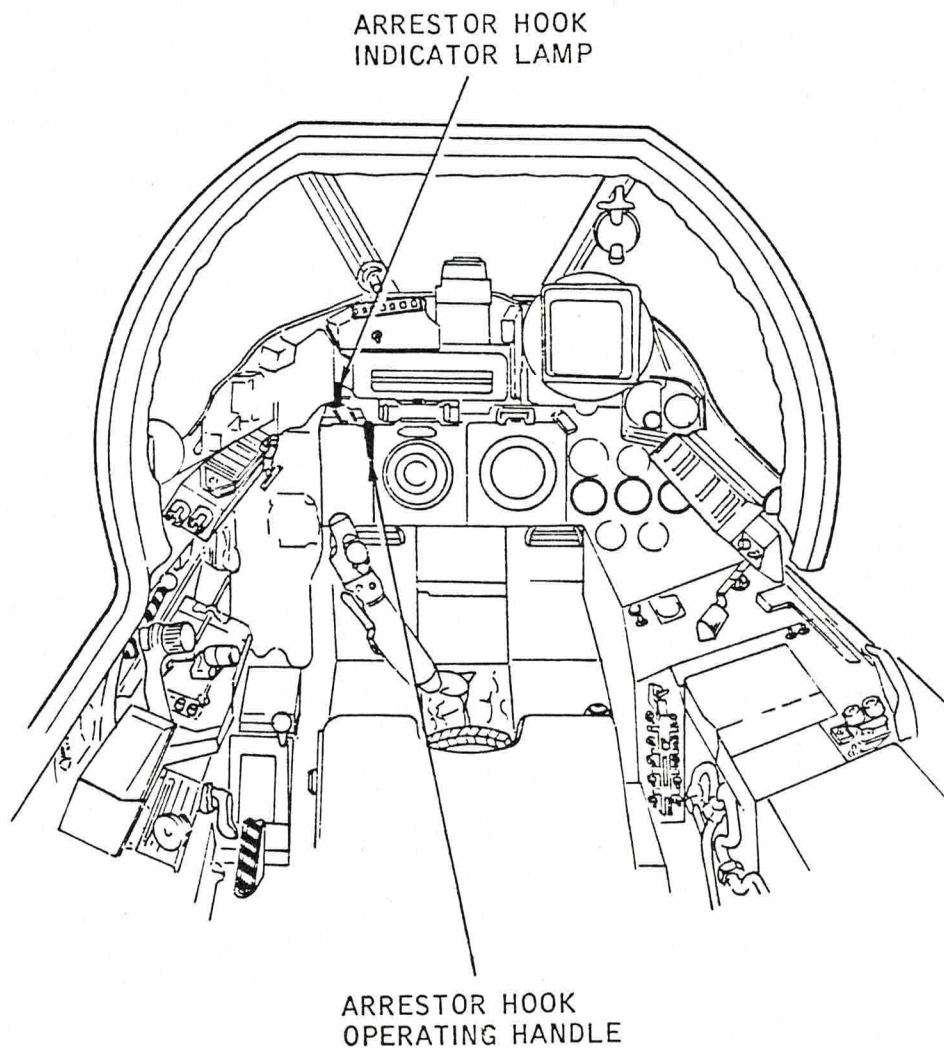
F53 T55

BAC F53 & T55 (SA)

5A3A Section 1

2nd Edition

Safety and Servicing Notes are to be complied with throughout the work detailed on this card.



ARRESTOR HOOK CONTROLS - COCKPIT (F53)

FIGURE 1

Continued Overleaf

SERVICING PROCEDURE INSPECTION STAGES DO NOT EXCLUDE ADDITIONAL INSPECTION STAGES INCORPORATED AS NECESSARY IN MAINTENANCE CERTIFICATION DOCUMENTS



CHAP 2 AIRFRAME

SP 141 AL 4

SHEET 4 OF 6

SERVICING PROCEDURE

F53

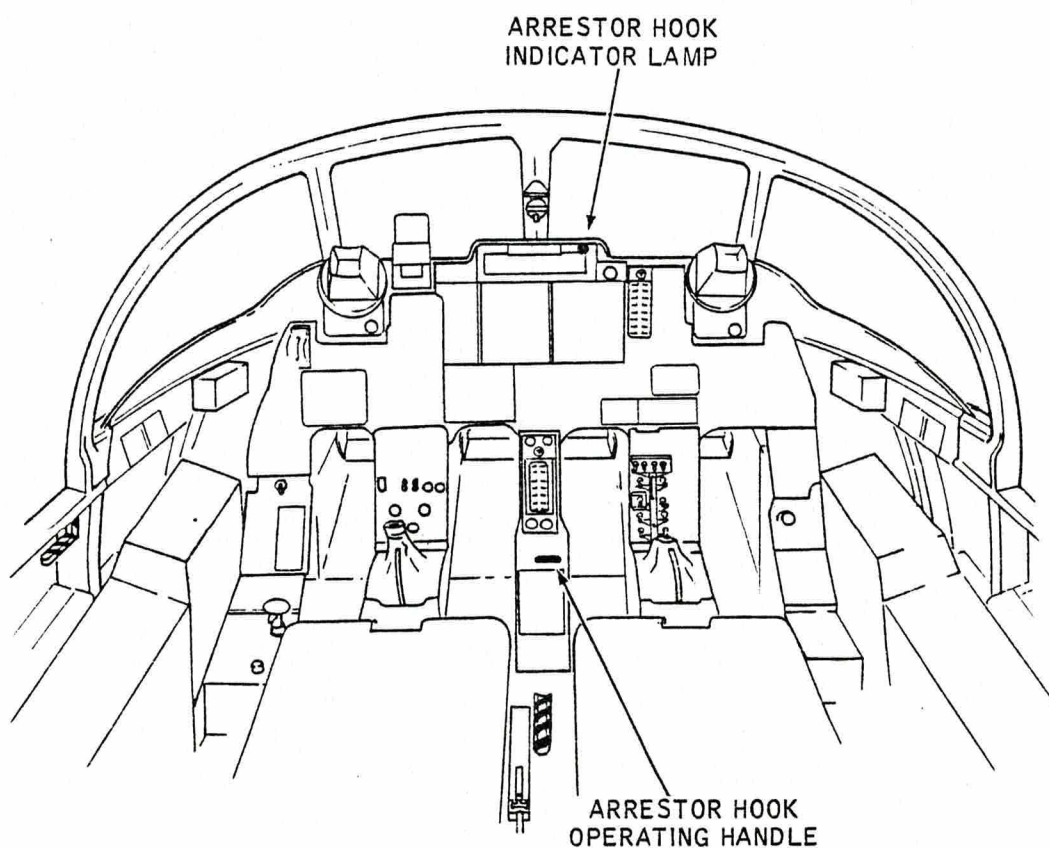
T55

BAC F53 & T55 (SA)

5A3A Section 1

2nd Edition

Safety and Servicing Notes are to be complied with throughout the work detailed on this card.



ARRESTOR HOOK CONTROLS - COCKPIT (T55)  
FIGURE 2

Continued

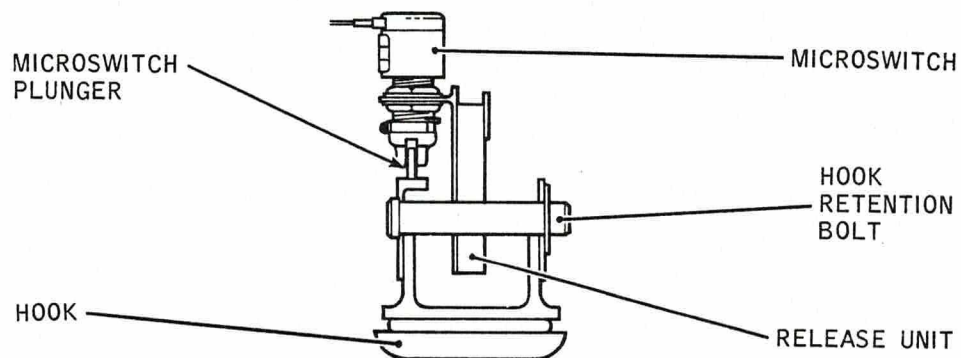
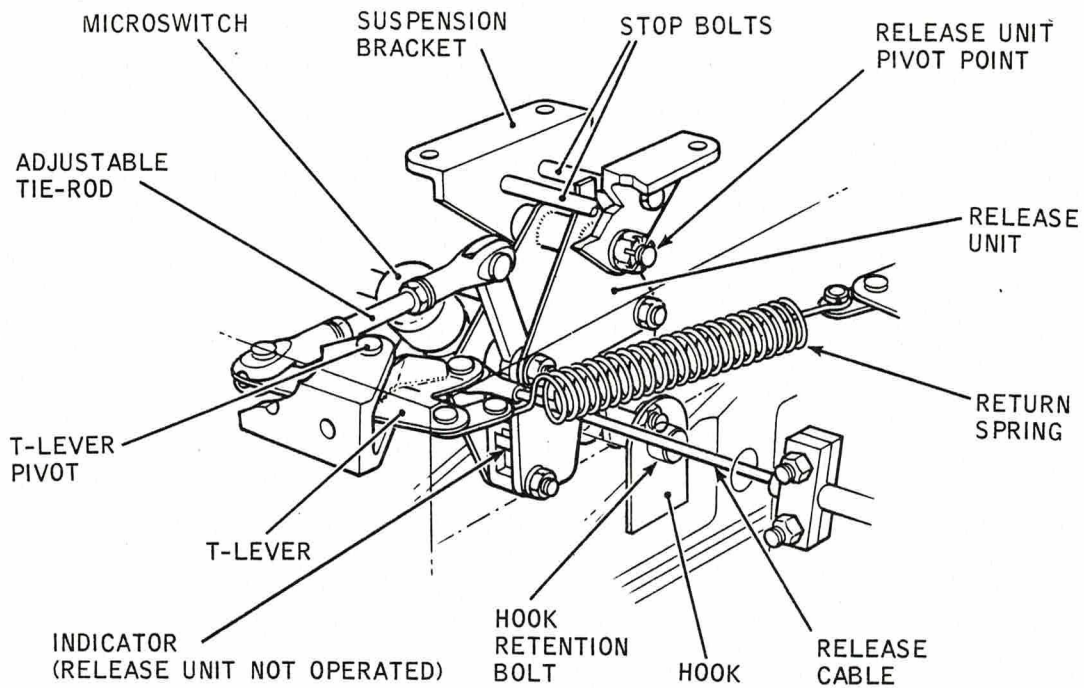
SERVICING PROCEDURE INSPECTION STAGES DO NOT EXCLUDE ADDITIONAL INSPECTION STAGES INCORPORATED AS NECESSARY IN MAINTENANCE CERTIFICATION DOCUMENTS

CHAP. 2 AIRFRAME  
S.P. 141 A.L. 4  
SHEET 5 OF 6

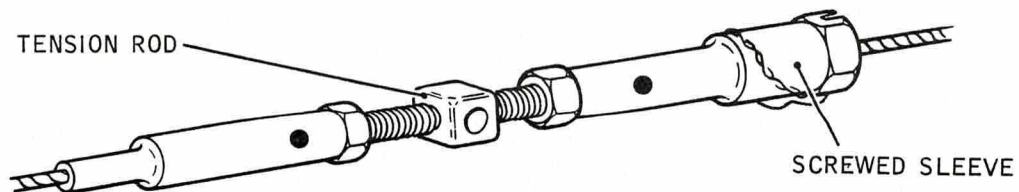
SERVICING PROCEDURE  
F53 T55

BAC F53 & T55 (SA)  
5A3A Section 1  
2nd Edition

Safety and Servicing Notes are to be complied with throughout the work detailed on this card.



VIEW LOOKING AFT  
ON MICROSWITCH



BREAKDOWN/ADJUSTMENT POINT, FRAMES 56-57

SYSTEM DETAILS - ARRESTOR HOOK

FIGURE 3

Continued Overleaf

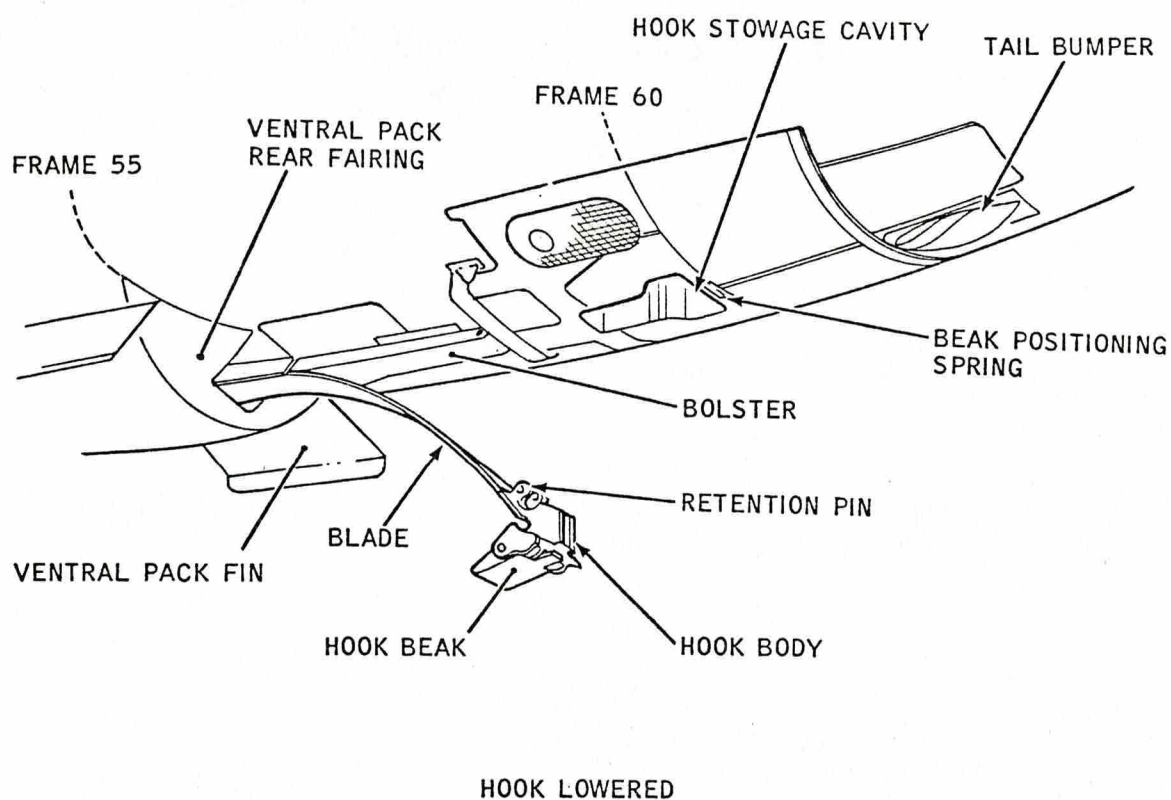
SERVICING PROCEDURE INSPECTION STAGES DO NOT EXCLUDE ADDITIONAL INSPECTION STAGES INCORPORATED AS NECESSARY IN MAINTENANCE CERTIFICATION DOCUMENTS

CHAP 2 AIRFRAME  
SP 141 AL 4  
SHEET 6 OF 6

SERVICING PROCEDURE  
F53 T55

B A C F 53 & T 55 (SA)  
5A3A Section 1  
2nd Edition

Safety and Servicing Notes are to be complied with  
throughout the work detailed on this card.



ARRESTOR HOOK AND BLADE - LOWERED

FIGURE 4

SERVICING PROCEDURE INSPECTION STAGES DO NOT EXCLUDE ADDITIONAL INSPECTION STAGES  
INCORPORATED AS NECESSARY IN MAINTENANCE CERTIFICATION DOCUMENTS



This file was downloaded  
from the RTFM Library.

Link: [www.scottbouch.com/rtfm](http://www.scottbouch.com/rtfm)

Please see site for usage terms,  
and more aircraft documents.

