

CHAP. 2 AIRFRAMW S.P. 157 A.L. SHEET 1 OF 7	SERVICING PROCEDURE F53 T55	BAC F53 & T55 (SA) 5A3A Section 1 2nd Edition
Tailplane Backlash Check	AFSC 43151	TIME EST
Safety and Servicing Notes are to be complied with throughout the work detailed on this card.		
<p>SPECIAL TOOLS AND EQUIPMENT</p> <p>Jack 8 ton pillar - (4Q/1045936). Dial gauge 1 x 0.001 (4Q/1309). Bracket assembly (L.M. Figs.1,2 & 3). 100 lb. Compression balance. (Carabalance; Catalogue No. B036. Joy & King (Greenford).</p> <p>NOTE 1: In addition to an inspector carrying out any specific inspections detailed in this Servicing Procedure, Quality Control must monitor all operations.</p> <p>NOTE 2: If dial gauge readings exceed 0.030 in. the following items must be examined for wear and replaced as required:-</p> <p>(a) A - Frame to tailplane attachment bolt. (b) A - Frame to screw jack attachment bolt. (c) Hole in A - Frame associated with (a). (d) Spherical bearing associated with (b).</p> <p>NOTE 3: If backlash is still in excess of 0.030 in. replace tailplane screw-jack assembly.</p> <p style="text-align: center;"><u>43151</u></p> <p>1. PREPARATION</p> <p>1.1 Tailplane. (i) Set to horizontal position. (ii) Exhaust hydraulic pressure.</p> <p>1.2 Dial gauge bracket complete with gauge. Fit at Access Panels 105P (left) and 105S (right) so that gauge plunger bears on upper tailplane surface at approximately 17 in. true radius from the tailplane spigot (See Fig.4).</p>		ASSOCIATED PROCEDURES
		Continued Overleaf
SERVICING PROCEDURE INSPECTION STAGES DO NOT EXCLUDE ADDITIONAL INSPECTION STAGES INCORPORATED AS NECESSARY IN MAINTENANCE CERTIFICATION DOCUMENTS		

CHAP. 2 AIRFRAME	SERVICING PROCEDURE	BAC F53 & T55 (SA)
S.P. 157 A.L. 1	F53 T55	5A3A Section 1
SHEET 2 OF 7		2nd Edition

Safety and Servicing Notes are to be complied with throughout the work detailed on this card.

43151

1. PREPARATION (contd)

1.3 Compression balance.

Locate on 8 ton pillar jack at underside of tailplane at Point A (See Fig.5).

2. TESTING

2.1 Tailplane.

Push upwards by hand (20 to 30 lb) on the leading-edge and release.

2.2 Dial gauge.

Set to read zero.

2.3 Compression balance.

Operate 8 ton pillar jack to obtain a reading of 100 lb.

2.4 Dial gauge.

Check and record maximum reading. This is not to exceed 0.030 in.

NOTE: The dial gauge will not return to zero.
If a second check is required repeat Item 2 complete.

Continued

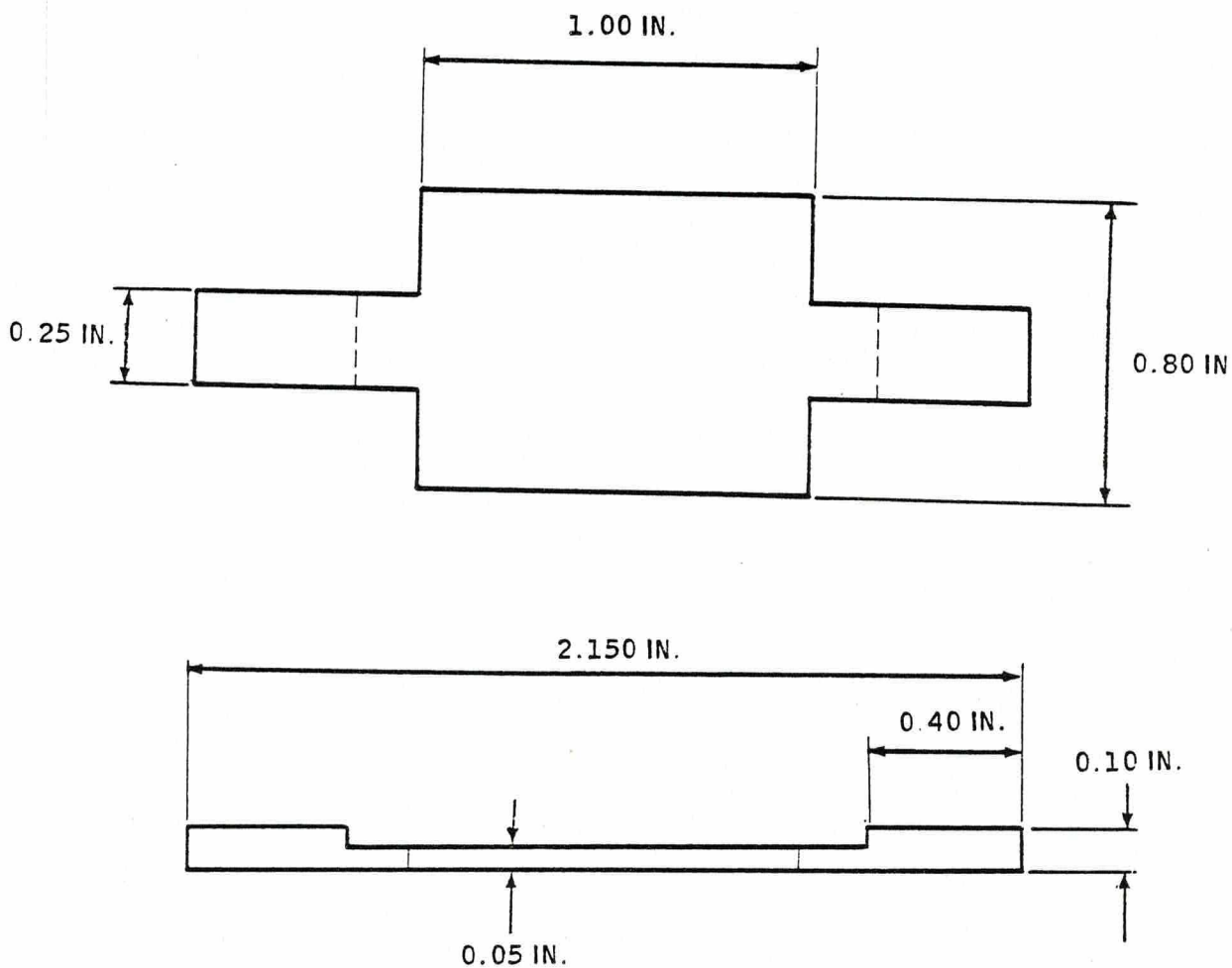
SERVICING PROCEDURE INSPECTION STAGES DO NOT EXCLUDE ADDITIONAL INSPECTION STAGES INCORPORATED AS NECESSARY IN MAINTENANCE CERTIFICATION DOCUMENTS

CHAP. 2 AIRFRAME
S.P. 157 A.L. 1
SHEET 3 OF 7

SERVICING PROCEDURE
F53 T55

BAC F53 & T55 (SA)
5A3A Section 1
2nd Edition

Safety and Servicing Notes are to be complied with
throughout the work detailed on this card.



LOCATOR TS/AGE/08/30C MATERIAL M.S.

LOCATION
FIGURE 1

Continued Overleaf

SERVICING PROCEDURE INSPECTION STAGES DO NOT EXCLUDE ADDITIONAL INSPECTION STAGES
INCORPORATED AS NECESSARY IN MAINTENANCE CERTIFICATION DOCUMENTS

CHAP. 2 AIRFRAME

S.P. 157 A.L. 1

SHEET 4 OF 7

SERVICING PROCEDURE

F53

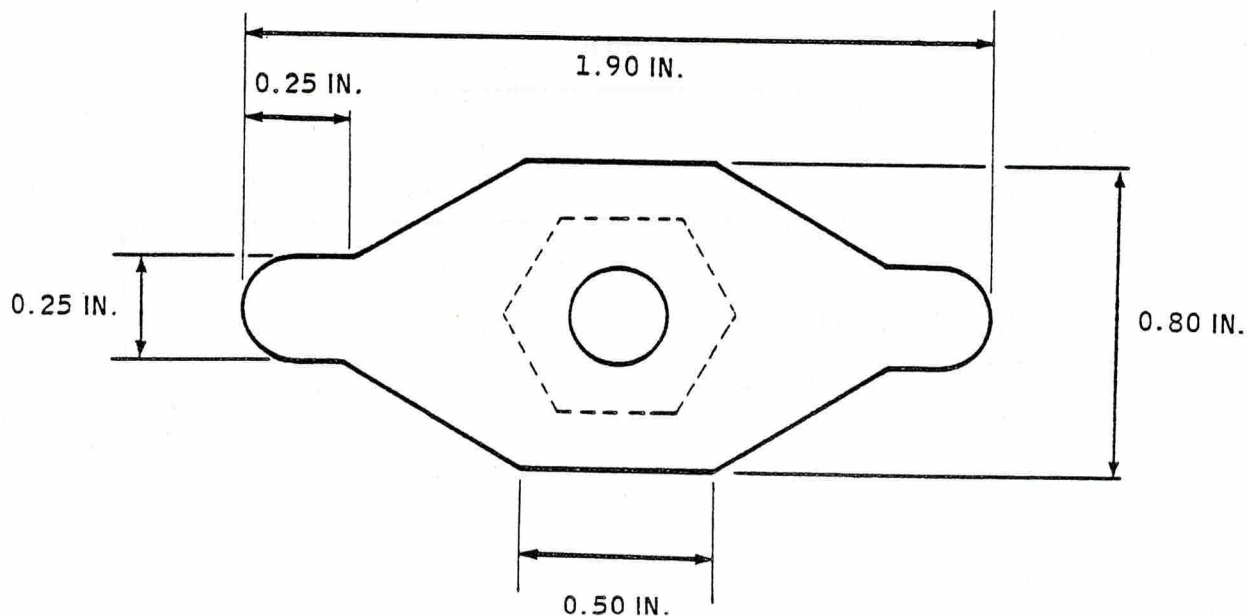
T55

BAC F53 & T55 (SA)

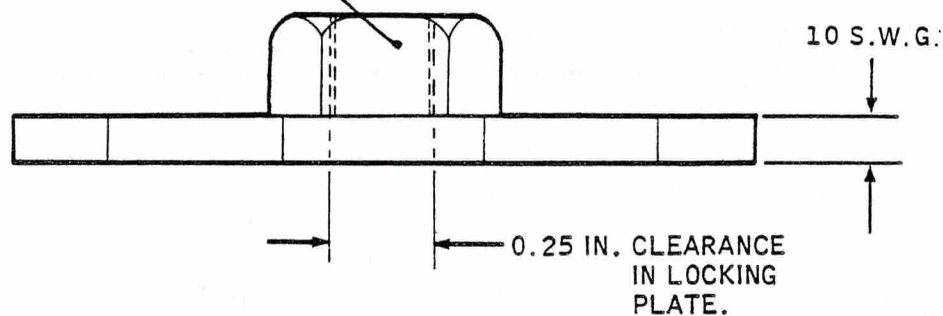
5A3A Section 1

2nd Edition

Safety and Servicing Notes are to be complied with throughout the work detailed on this card.



$\frac{1}{4}$ B.S.F. NUT
WELDED TO
LOCKING
PLATE.



LOCKING PLATE TS/AGE/88/30C MATERIAL M.S.

LOCKING PLATE

FIGURE 2

Continued

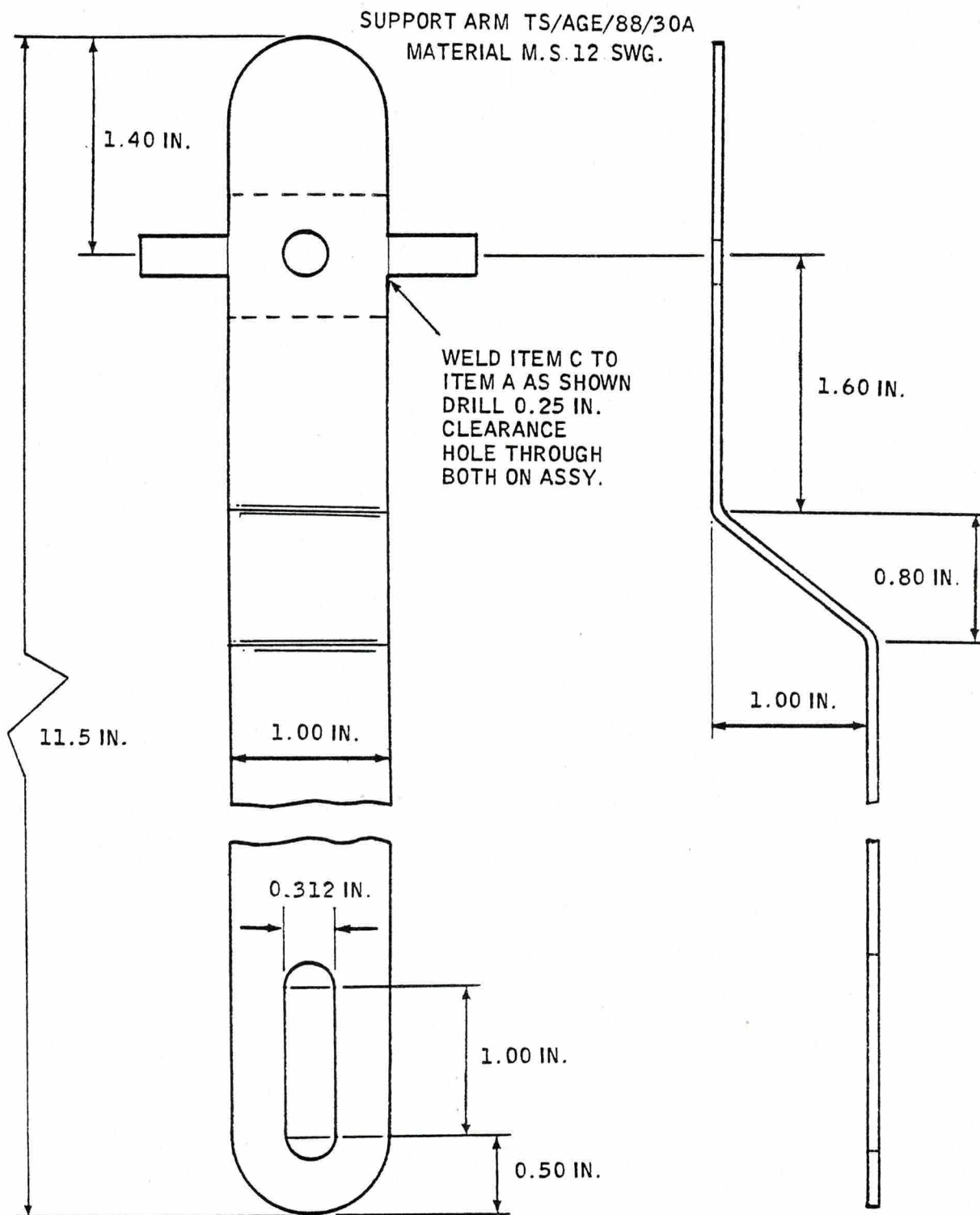
SERVICING PROCEDURE INSPECTION STAGES DO NOT EXCLUDE ADDITIONAL INSPECTION STAGES. INCORPORATED AS NECESSARY IN MAINTENANCE CERTIFICATION DOCUMENTS

CHAP. 2 AIRFRAME
S.P. 157 A.L. 1
SHEET 5 OF 7

SERVICING PROCEDURE
F53 T55

BAC F53 & T55 (SA)
5A3A Section 1
2nd Edition

Safety and Servicing Notes are to be complied with
throughout the work detailed on this card.



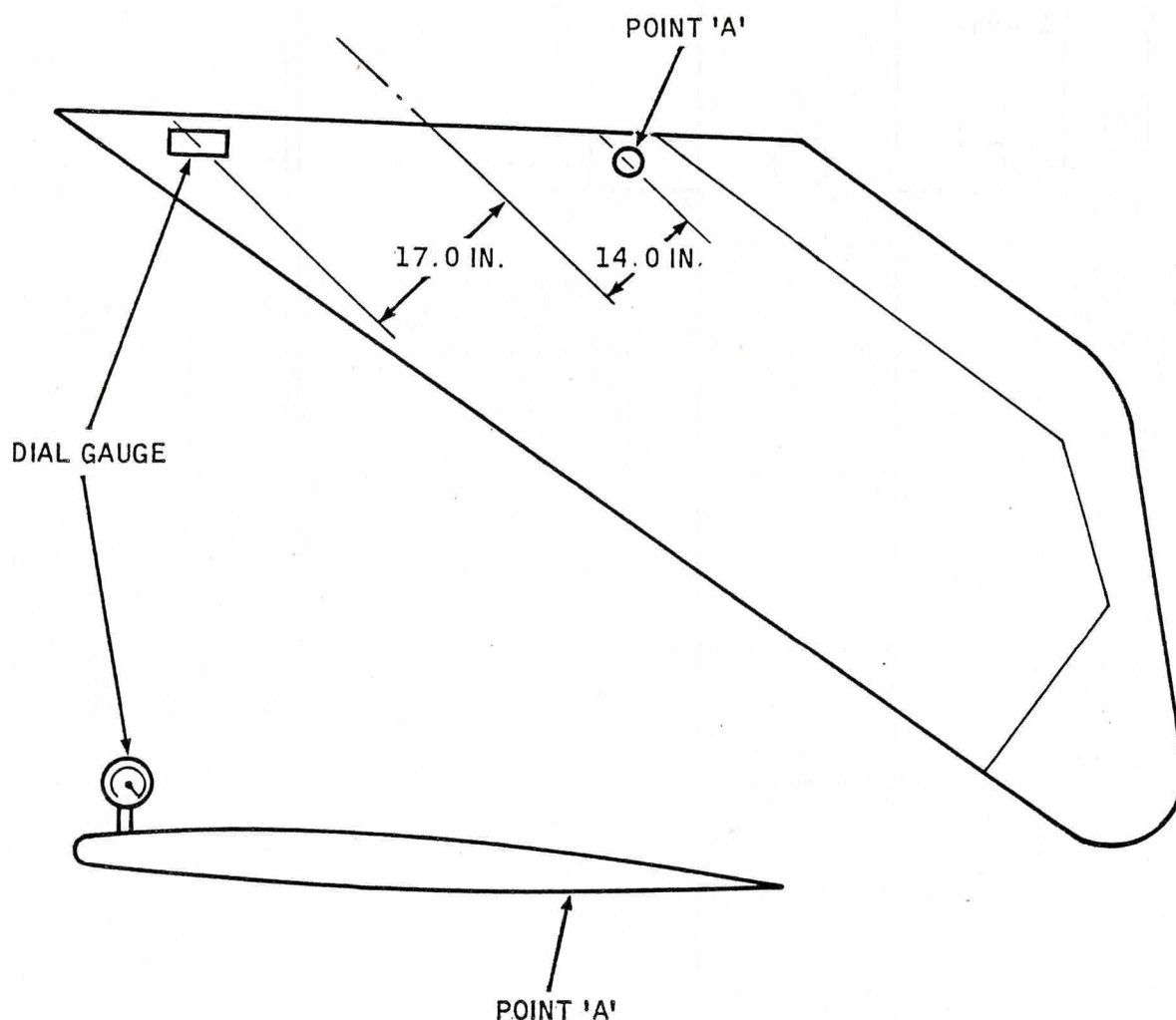
SUPPORT ARM
FIGURE 3

Continued Overleaf

SERVICING PROCEDURE INSPECTION STAGES DO NOT EXCLUDE ADDITIONAL INSPECTION STAGES
INCORPORATED AS NECESSARY IN MAINTENANCE CERTIFICATION DOCUMENTS

CHAP. 2 AIRFRAME	SERVICING PROCEDURE	BAC F53 & T55 (SA)
S.P. 157 A.L.	F53 T55	5A3A Section 1
SHEET 6 OF 7		2nd Edition

Safety and Servicing Notes are to be complied with throughout the work detailed on this card.



DIAL GAUGE AND BRACKET
FIGURE 4

Continued

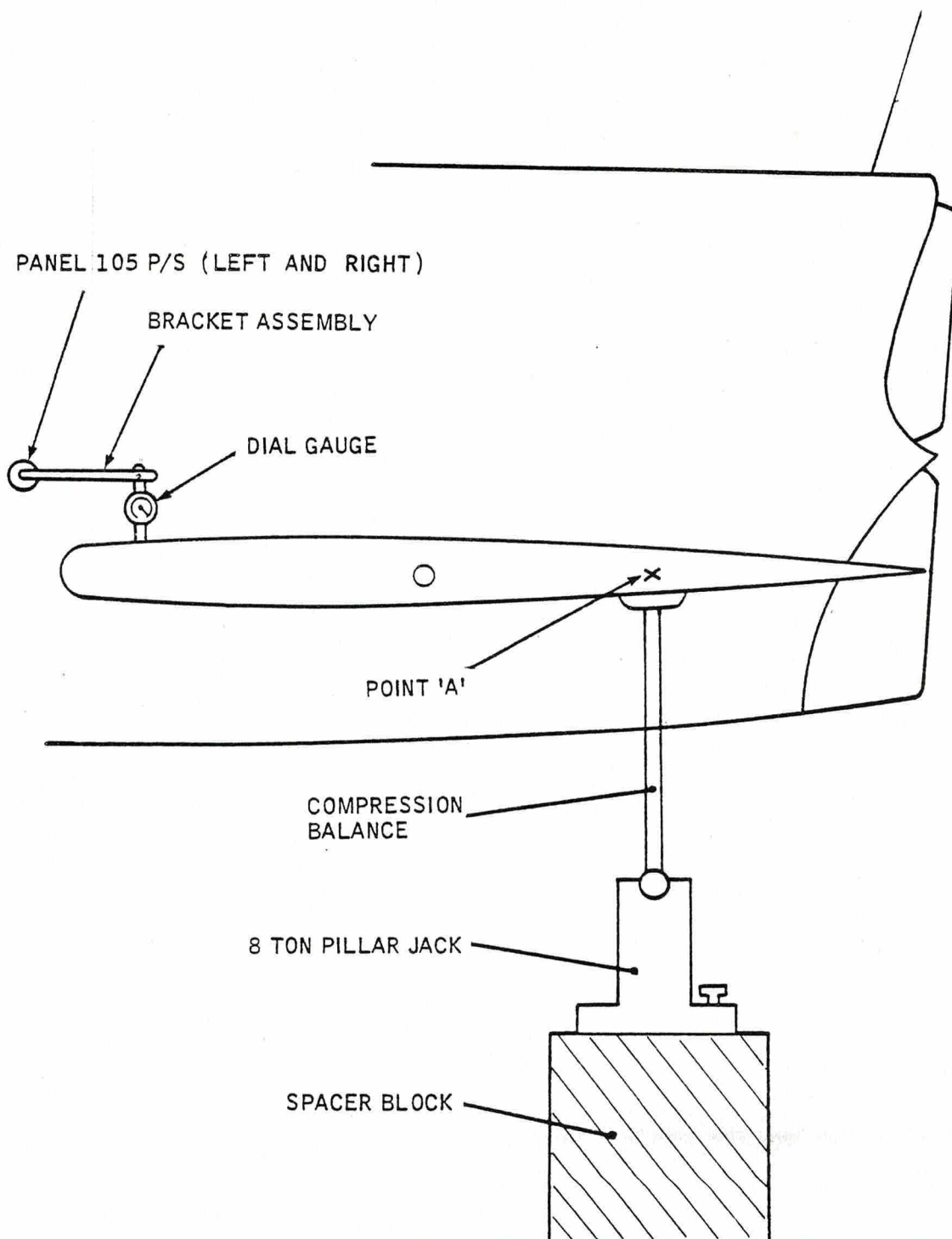
SERVICING PROCEDURE INSPECTION STAGES DO NOT EXCLUDE ADDITIONAL INSPECTION STAGES INCORPORATED AS NECESSARY IN MAINTENANCE CERTIFICATION DOCUMENTS

CHAP. 2 AIRFRAME
S.P. 157 A.L. 1
SHEET 7 OF 7

SERVICING PROCEDURE
F53 T55

BAC F53 & T55 (SA)
5A3A Section 1
2nd Edition

Safety and Servicing Notes are to be complied with
throughout the work detailed on this card.



TAILPLANE BACKLASH CHECK

FIGURE 5

SERVICING PROCEDURE INSPECTION STAGES DO NOT EXCLUDE ADDITIONAL INSPECTION STAGES
INCORPORATED AS NECESSARY IN MAINTENANCE CERTIFICATION DOCUMENTS

1431 EST 2 085 014

REPLYING PROCEDURE

1431 EST 2 085 014

1431 EST 2 085 014

1431 EST 2 085 014

1431 EST 2 085 014

1431 EST 2 085 014

1431 EST 2 085 014

1431 EST 2 085 014

1431 EST 2 085 014

1431 EST 2 085 014

1431 EST 2 085 014

1431 EST 2 085 014

1431 EST 2 085 014

1431 EST 2 085 014

1431 EST 2 085 014

1431 EST 2 085 014

1431 EST 2 085 014

1431 EST 2 085 014

1431 EST 2 085 014

1431 EST 2 085 014

1431 EST 2 085 014

1431 EST 2 085 014

1431 EST 2 085 014

1431 EST 2 085 014

1431 EST 2 085 014

1431 EST 2 085 014

1431 EST 2 085 014

1431 EST 2 085 014

1431 EST 2 085 014

This file was downloaded
from the RTFM Library.

Link: www.scottbouch.com/rtfm

Please see site for usage terms,
and more aircraft documents.

