

CHAP. 3 AIRFRAME
S.P. 305A A.L.
SHEET 1 OF 2

SERVICING PROCEDURE
F53

BAC F53 & T55 (SA)
5A3A Section 1
2nd Edition

Rudder Controls

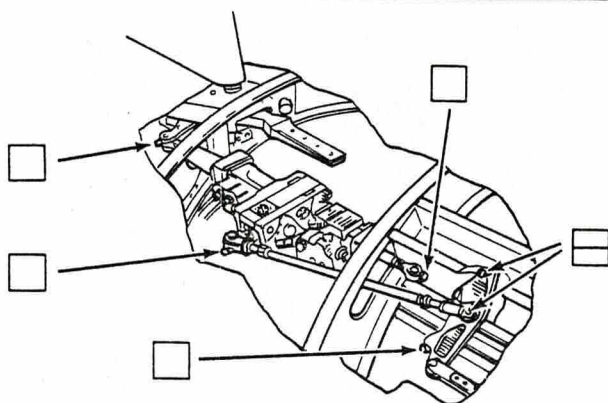
AFSC

TIME EST

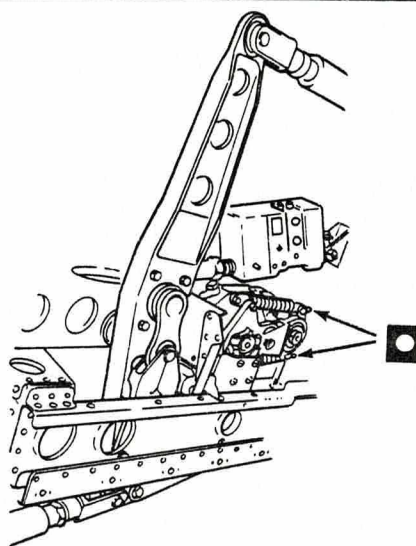
Safety and Servicing Notes are to be complied with throughout the work detailed on this card.

43151
42152

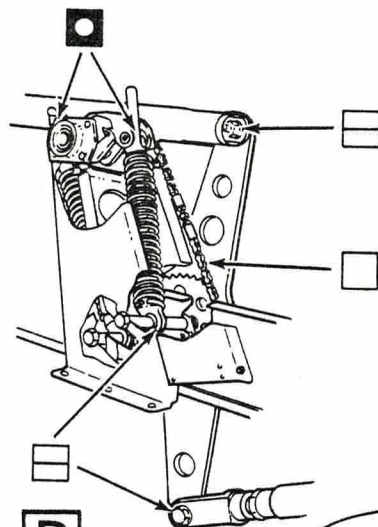
ASSOCIATED
PROCEDURES



A ALL THE BALL BEARINGS IN THIS ASSEMBLY ARE PRE-PACKED WITH GREASE XG-287



B ALL BALL BEARINGS IN THE RUDDER HINGE ASSEMBLY ARE PRE-PACKED WITH GREASE XG-287



D

KEY TO LUBRICANTS

SYMBOL NOMENCLATURE



XG-276



XG-287



XG-277



P PRE-PACKED

C

TYPICAL ROD-TO-ROD CONNECTION
PRE-PACKED BEARINGS WITH SIDE PLATES

LUBRICATION OF CONTROLS

FIGURE 1

Continued Overleaf

SERVICING PROCEDURE INSPECTION STAGES DO NOT EXCLUDE ADDITIONAL INSPECTION STAGES INCORPORATED AS NECESSARY IN MAINTENANCE CERTIFICATION DOCUMENTS

CHAP. 3 AIRFRAME

S.P. 305A A.L

SHEET 2 OF 2

SERVICING PROCEDURE

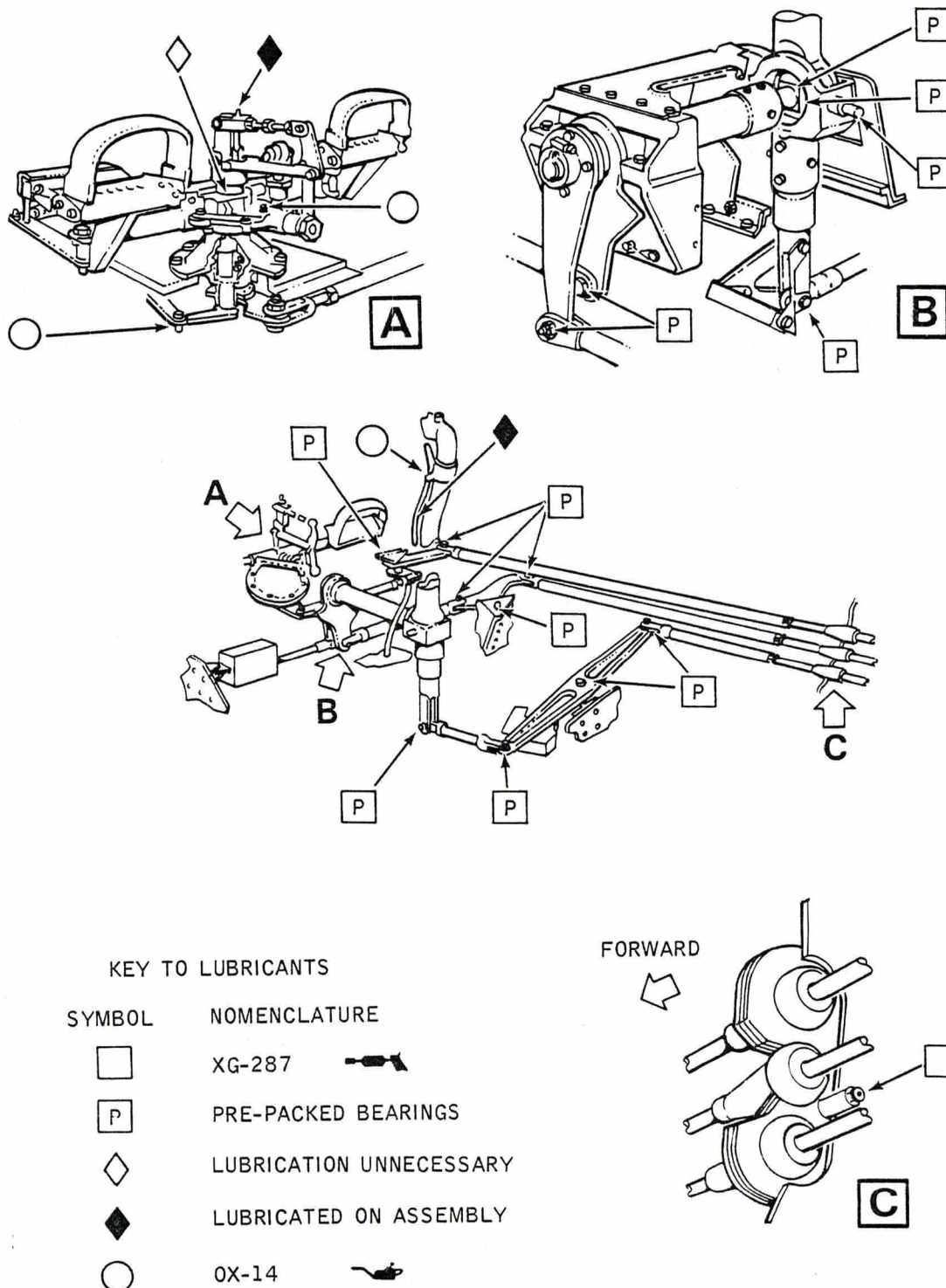
F53

BAC F53 & T55 (SA)

5A3A Section 1

2nd Edition

Safety and Servicing Notes are to be complied with throughout the work detailed on this card.



LUBRICATION OF CONTROLS

FIGURE 2

SERVICING PROCEDURE INSPECTION STAGES DO NOT EXCLUDE ADDITIONAL INSPECTION STAGES INCORPORATED AS NECESSARY IN MAINTENANCE CERTIFICATION DOCUMENTS

This file was downloaded
from the RTFM Library.

Link: www.scottbouch.com/rtfm

Please see site for usage terms,
and more aircraft documents.

