

CHAP. 4 AIRFRAME S.P. 441 A.L. SHEET 1 OF 2	SERVICING PROCEDURE F53 T55	BAC F53 & T55 (SA) 5A3A Section 1 2nd Edition	
Radius Rod Lock Plunger and Lugs - Check Clearance		AFSC 43151	TIME EST
Safety and Servicing Notes are to be complied with throughout the work detailed on this card.			
SPECIAL TOOLS AND EQUIPMENT Nil.			ASSOCIATED PROCEDURES
<u>43151</u>			
1. EXAMINATION			
1.1 Radius rod centre pivot (left).	(i) Partially retract main undercarriage. (ii) Clean off all dirt and grease from around central pivot pin and abutment and latch faces. (iii) Examine for any deformation or bedding on latch and abutment faces.		
1.2 Radius rod centre pivot (right).	(i) Partially retract main undercarriage. (ii) Clean off all dirt and grease from around central pivot pin and abutment and latch faces. (iii) Examine for any deformation or bedding on latch and abutment faces.		
1.3 Undercarriage.	(i) Set to down. (ii) Ensure locked.		
1.4 Pawl face and lock-jack (See Fig.1).	Check clearance Y, 0.002 to 0.012 in. NOTE: If total clearance is in excess of 0.012 in. further advice is to be requested from Dowty Rotol Ltd., Cheltenham, England.		
			Continued Overleaf
SERVICING PROCEDURE INSPECTION STAGES DO NOT EXCLUDE ADDITIONAL INSPECTION STAGES INCORPORATED AS NECESSARY IN MAINTENANCE CERTIFICATION DOCUMENTS			

CHAP. 4 AIRFRAME

S.P. 441 A.L

SHEET 2 OF 2

SERVICING PROCEDURE

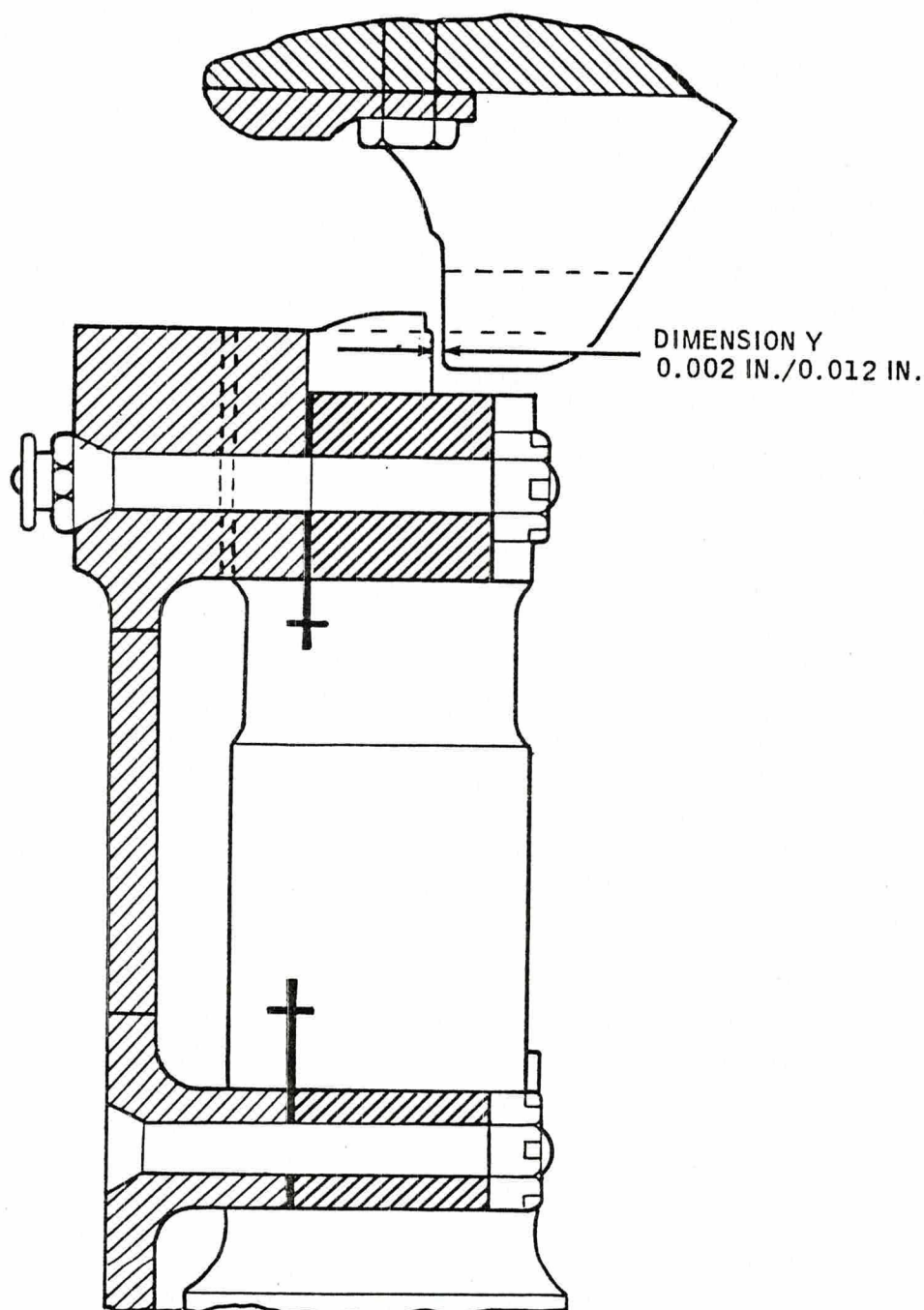
F53 T55

BAC F53 & T55 (SA)

5A3A Section 1

2nd Edition

Safety and Servicing Notes are to be complied with throughout the work detailed on this card.



DOWNLOCK SETTING

FIGURE 1

SERVICING PROCEDURE INSPECTION STAGES DO NOT EXCLUDE ADDITIONAL INSPECTION STAGES INCORPORATED AS NECESSARY IN MAINTENANCE CERTIFICATION DOCUMENTS

This file was downloaded
from the RTFM Library.

Link: www.scottbouch.com/rtfm

Please see site for usage terms,
and more aircraft documents.

