

CHAP 4 AIRFRAME SP 452 AL 9 SHEET 1 OF 5	SERVICING PROCEDURE F53 T55	BAC F53 & T55 (SA) 5A3A Section 1 2nd Edition
Main Undercarriage Leg Fitting Retraction Jack Lugs - Cracking		AFSC 43151 42172 43171 53650 42152
Safety and Servicing Notes are to be complied with throughout the work detailed on this card.		TIME EST
<p>SPECIAL TOOLS AND EQUIPMENT</p> <p>Bush Fitting/Removal Tool (LM) local manufacture (See Figure 1).</p> <p style="text-align: center;"><u>4 3 1 5 1</u></p> <p>1. PREPARATION</p> <p>1.1 Aircraft (i) Raise on jacks until all wheels are clear of the ground. (ii) Trestle at Frame 59. (iii) Connect hydraulic rigs I.A.W SP 106 (AF).</p> <p style="text-align: center;"><u>4 3 1 5 1 / 4 2 1 5 2</u></p> <p>2. REMOVAL</p> <p>2.1 Retraction jacks. (i) Disconnect from the leg main fitting lugs. (ii) Move clear of the lugs and support the jacks.</p> <p>NOTE 1: Sub item 2.2 is applicable only if MOD 9449 Parts A, B or C are embodied.</p> <p>NOTE 2: Care must be taken to ensure that bushes removed during NDT Inspection of the lugs, are replaced in the same bores from which they were removed. As each bush is peculiar to the lug for which it was made.</p> <p>2.2 Leg main fitting (i) Remove the bushes with lugs. bush removal tool (LM) (See Fig.1). (ii) Inspect bushes for scoring and wear, replace as necessary to MOD 9449 Leaflet on fitting Item 5.</p> <p style="text-align: center;"><u>5 3 6 5 0</u></p> <p>3. EXAMINATION</p> <p>3.1 Leg main fitting (i) Examine in accordance lugs. with NDT/LTG/6 and 9. (ii) Record status on RSAF Form 1600-1.</p>		<p>ASSOCIATED PROCEDURES</p> <p>SP106 (AF) SP119 (AF)</p>
		Continued Overleaf
SERVICING PROCEDURE INSPECTION STAGES DO NOT EXCLUDE ADDITIONAL INSPECTION STAGES INCORPORATED AS NECESSARY IN MAINTENANCE CERTIFICATION DOCUMENTS		

CHAP	4	AIRFRAME	SERVICING PROCEDURE	BAC F53 & T55 (SA)
SP	452	AL	F53	5A3A Section 1
SHEET	2	OF	T55	2nd Edition

Safety and Servicing Notes are to be complied with throughout the work detailed on this card.

53650

NOTE: Item 4 is applicable only if item 3.1 is unsatisfactory and the leg requires rectification. I.A.W. MOD 9449 or 9450.

43151/42152

4. REPLACEMENT

4.1 Main undercarriage leg. Replace I.A.W. BAC 53/55 (SA)-1 Sect.3, Chap.5

5. FITTING

NOTE 1: Sub-item 5.1 is applicable only if MOD 9449 bushes are fitted.

NOTE 2: Ensure the bushes are fitted as stated in Item 2 NOTE 2.

5.1 Leg main fitting lugs. (i) Apply an overall coating of grease XG-287 to bushes prior to assembly.  
(ii) Refit bushes using bush fitting tool (LM) (See Fig.1)

43171/42172 (INSPECTOR)

6. INSPECTION STAGE

6.1 Leg main fitting lugs. Inspect sub-item 5.1 for correct assembly.

43151/42152

7. TEST

7.1 Retraction jack, eye end assembly. Check override I.A.W. SP 119 (AF).

43171/42171 (CHECK)

8. INSPECTION STAGE

8.1 Retraction jack, eye end assembly. Inspect sub-item 7.1 for correct override I.A.W. SP 119 (AF).

Continued

SERVICING PROCEDURE INSPECTION STAGES DO NOT EXCLUDE ADDITIONAL INSPECTION STAGES INCORPORATED AS NECESSARY IN MAINTENANCE CERTIFICATION DOCUMENTS

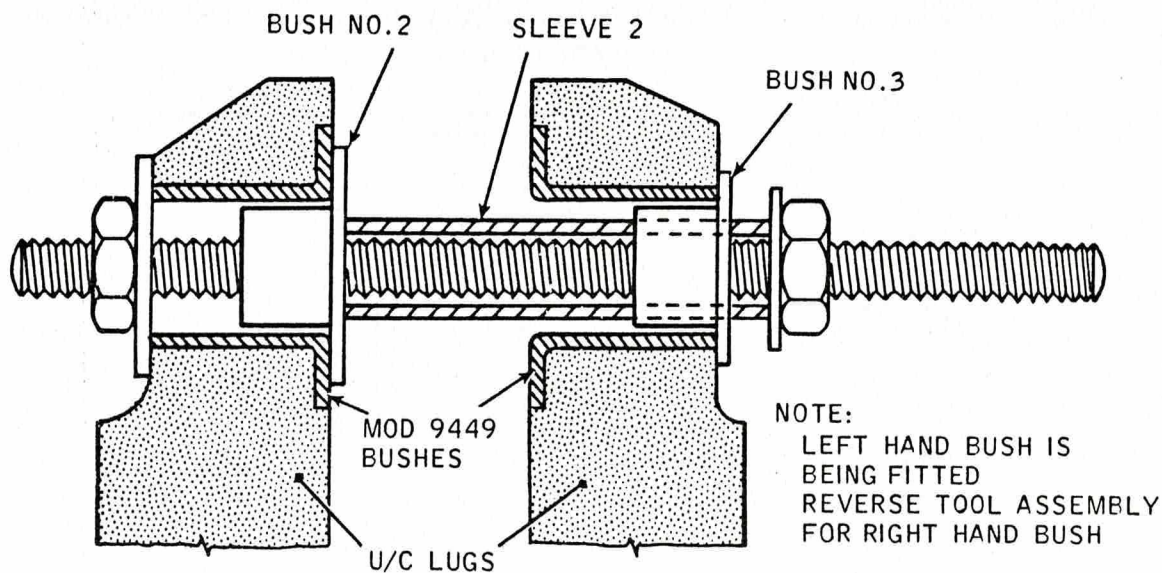


CHAP 4 AIRFRAME  
SP 452 AL 8  
SHEET 3 OF 5

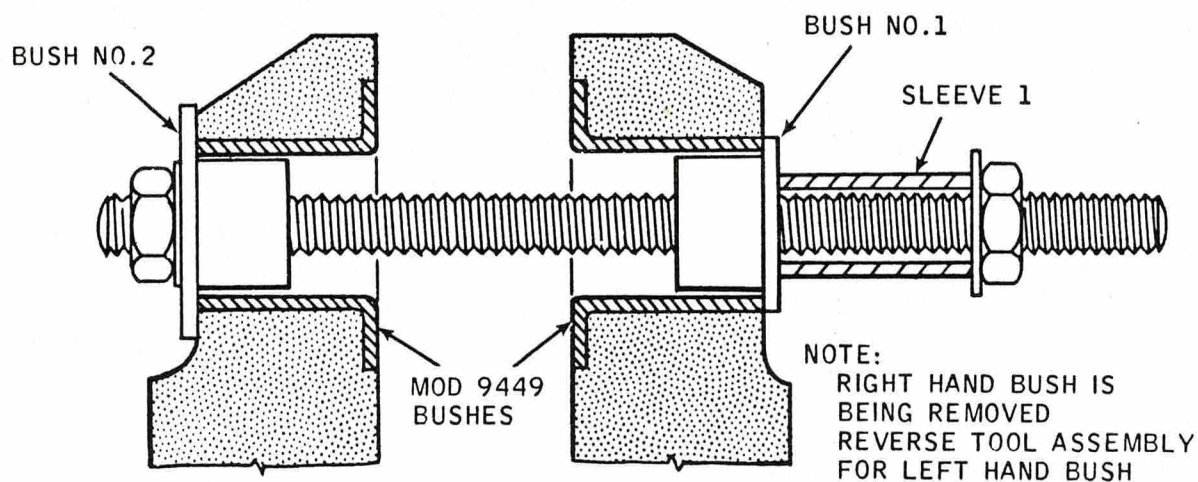
SERVICING PROCEDURE  
F53 T55

BAC F53 & T55 (SA)  
5A3A Section 1  
2nd Edition

Safety and Servicing Notes are to be complied with  
throughout the work detailed on this card.



'A' FITTING OF BUSH ASSEMBLY



'B' REMOVAL OF BUSH ASSEMBLY

BUSH FITTING/REMOVAL TOOL  
FIGURE 1

Continued Overleaf

SERVICING PROCEDURE INSPECTION STAGES DO NOT EXCLUDE ADDITIONAL INSPECTION STAGES  
INCORPORATED AS NECESSARY IN MAINTENANCE CERTIFICATION DOCUMENTS

CHAP 4 AIRFRAME  
SP 452 AL 8  
SHEET 4 OF 5

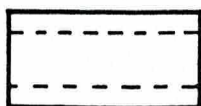
SERVICING PROCEDURE  
F53 T55

BAC F53 & T55 (SA)  
5A3A Section 1  
2nd Edition

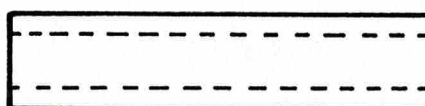
Safety and Servicing Notes are to be complied with throughout the work detailed on this card.



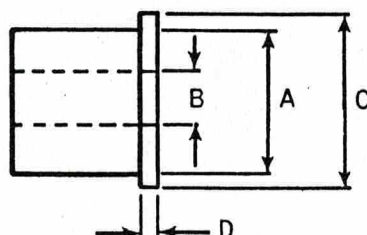
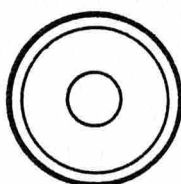
THREADED BAR



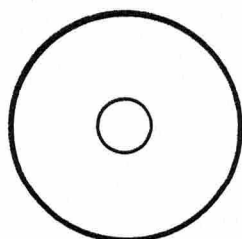
SLEEVE 1



SLEEVE 2



BUSHES  
1-3



WASHER



NUT

MATERIAL STEEL

QTY	DE Scription	Length/Thickness	O.D	I.D
1	THREADED BAR	5.75 in	5/16 BSF	
1	SLEEVE 1	1.00 in	0.5in	0.3438in
1	SLEEVE 2	2.25 in	0.5in	0.3438in
2	WASHER	0.064in	1.26in	0.3438in
2	NUT	—	5/16inBSF	
TOLERANCE ± 0.010in				

MATERIAL BRASS

BUSHES (OVERALL LENGTH 0.75in)					
QTY	BUSH No	DIMENSION			
		A	B	C	D
1	1	0.747in	0.3438in	0.847in	0.075in
1	2	0.747in	0.3438in	1.35in	0.075in
2	3*	0.747in	0.515in	1.35in	0.075in
TOLERANCE ± 0.010in					
TOLERANCE - 0.000 in - 0.010 in					

BUSH TOOL COMPONENTS  
FIGURE 2

Continued

SERVICING PROCEDURE INSPECTION STAGES DO NOT EXCLUDE ADDITIONAL INSPECTION STAGES INCORPORATED AS NECESSARY IN MAINTENANCE CERTIFICATION DOCUMENTS

CHAP	4	AIRFRAME	SERVICING PROCEDURE	BAC F53 & T55 (SA)
SP	452	AL 9	F53	T55
SHEET	5	OF 5		5A3A Section 1
				2nd Edition

Safety and Servicing Notes are to be complied with throughout the work detailed on this card.

## 9. FITTING

- 9.1 Retraction jack eye end assembly. (i) Reconnect to leg main fitting lugs I.A.W. SP 119 (AF).  
(ii) Lubricate with grease XG-287.

4 3 1 5 1 / 4 2 1 5 2

## 10. TEST

- 10.1 Undercarriage. Test, SP 106 (AF).

4 3 1 7 1 / 4 2 1 7 1 (INSPECTOR)

## 11. INSPECTION STAGE

- 11.1 Main undercarriage leg assembly. Independent check of:  
(i) Assembly and locking.  
(ii) Function.

4 3 1 5 1

## 12. COMPLETION

- 12.1 Aircraft. (i) Remove hydraulic rigs I.A.W. SP 106 (AF).  
(ii) Remove trestle and lower off jacks.

1. Name of the person: [illegible]  
2. Address: [illegible]  
3. City: [illegible]  
4. State: [illegible]  
5. Zip: [illegible]

6. Date of birth: [illegible]  
7. Date of death: [illegible]

8. Date of marriage: [illegible]  
9. Date of divorce: [illegible]

10. Date of remarriage: [illegible]  
11. Date of remarriage: [illegible]

12. Date of remarriage: [illegible]  
13. Date of remarriage: [illegible]

14. Date of remarriage: [illegible]  
15. Date of remarriage: [illegible]

16. Date of remarriage: [illegible]  
17. Date of remarriage: [illegible]

18. Date of remarriage: [illegible]  
19. Date of remarriage: [illegible]

20. Date of remarriage: [illegible]  
21. Date of remarriage: [illegible]

22. Date of remarriage: [illegible]  
23. Date of remarriage: [illegible]

24. Date of remarriage: [illegible]  
25. Date of remarriage: [illegible]

26. Date of remarriage: [illegible]  
27. Date of remarriage: [illegible]

28. Date of remarriage: [illegible]  
29. Date of remarriage: [illegible]

30. Date of remarriage: [illegible]  
31. Date of remarriage: [illegible]

32. Date of remarriage: [illegible]  
33. Date of remarriage: [illegible]

34. Date of remarriage: [illegible]  
35. Date of remarriage: [illegible]

36. Date of remarriage: [illegible]  
37. Date of remarriage: [illegible]

38. Date of remarriage: [illegible]  
39. Date of remarriage: [illegible]

40. Date of remarriage: [illegible]  
41. Date of remarriage: [illegible]

42. Date of remarriage: [illegible]  
43. Date of remarriage: [illegible]

44. Date of remarriage: [illegible]  
45. Date of remarriage: [illegible]

46. Date of remarriage: [illegible]  
47. Date of remarriage: [illegible]

48. Date of remarriage: [illegible]  
49. Date of remarriage: [illegible]

50. Date of remarriage: [illegible]  
51. Date of remarriage: [illegible]

52. Date of remarriage: [illegible]  
53. Date of remarriage: [illegible]

54. Date of remarriage: [illegible]  
55. Date of remarriage: [illegible]





This file was downloaded  
from the RTFM Library.

Link: [www.scottbouch.com/rtfm](http://www.scottbouch.com/rtfm)

Please see site for usage terms,  
and more aircraft documents.