

CHAP 4 AIRFRAME SP 456 AL 10 SHEET 1 OF 3	SERVICING PROCEDURE F53 T55	BAC F53 & T55 (SA) 5A3A Section 1 2nd Edition	
Left and Right Mainplanes Spar 4 Rib 7 Vertical Members - Cracking		AFSC  43151	TIME EST
Safety and Servicing Notes are to be complied with throughout the work detailed on this card.			
SPECIAL TOOLS AND EQUIPMENT  Allen light probe kit, 5A/4310 containing:- Mirror, 1½ inch, 5A/4345579 Probe, flexible, 5A/9238375 Case, battery, 5A/4662049.  <div style="text-align: center;"><u>4 3 1 5 1</u></div>			ASSOCIATED PROCEDURES  SP601 (P)
1. PREPARATION  1.1 Mainplanes. Ensure defuelled.  1.2 Access panel to No.4 Remove. D.C. fuel pump.  NOTE: At item 2.1 where no crack is found no remedial action is required. The lengths and locations of all cracks found are to be reported (see NOTE below). Cracks are to be examined for propagation every 28 days and all instances reported.  2. EXAMINATION  2.1 Spar 4/Rib 7 junction, (i) Examine for cracks, aft members Pt.Nos. (see Fig.1). EF3-20-225 (left) and (ii) Measure lengths of EF3-20-226 (right) cracks. (MSL 010640 and 010738),  NOTE: When replacing an aft vertical member as at item 3.1 examine the matching forward vertical member Pt. No. EF3-20-223 (left), EF3-20-224 (right). If a crack is found, retain the aircraft unserviceable, report the crack length and location and request advice.			
			Continued Overleaf
SERVICING PROCEDURE INSPECTION STAGES DO NOT EXCLUDE ADDITIONAL INSPECTION STAGES INCORPORATED AS NECESSARY IN MAINTENANCE CERTIFICATION DOCUMENTS			

CHAP 4 AIRFRAME	SERVICING PROCEDURE	BAC F53 & T55 (SA)
SP 456 AL 10	F53 T55	5A3A Section 1
SHEET 2 OF 3		2nd Edition

Safety and Servicing Notes are to be complied with throughout the work detailed on this card.

### 3. RECTIFICATION

- 3.1 Aft vertical member (i) Replace.  
with crack exceeding  
3.0 inches in length

NOTE 1: All reports to be made to the maintenance authority S.A.S.D. Warton. Quote aircraft tail number in every case.

NOTE 2: Where a replacement vertical member is fitted further compliance with this instruction is unnecessary.

Continued

SERVICING PROCEDURE INSPECTION STAGES DO NOT EXCLUDE ADDITIONAL INSPECTION STAGES INCORPORATED AS NECESSARY IN MAINTENANCE CERTIFICATION DOCUMENTS

CHAP 4 AIRFRAME

SP 456 AL 10

SHEET 3 OF 3

SERVICING PROCEDURE

F53

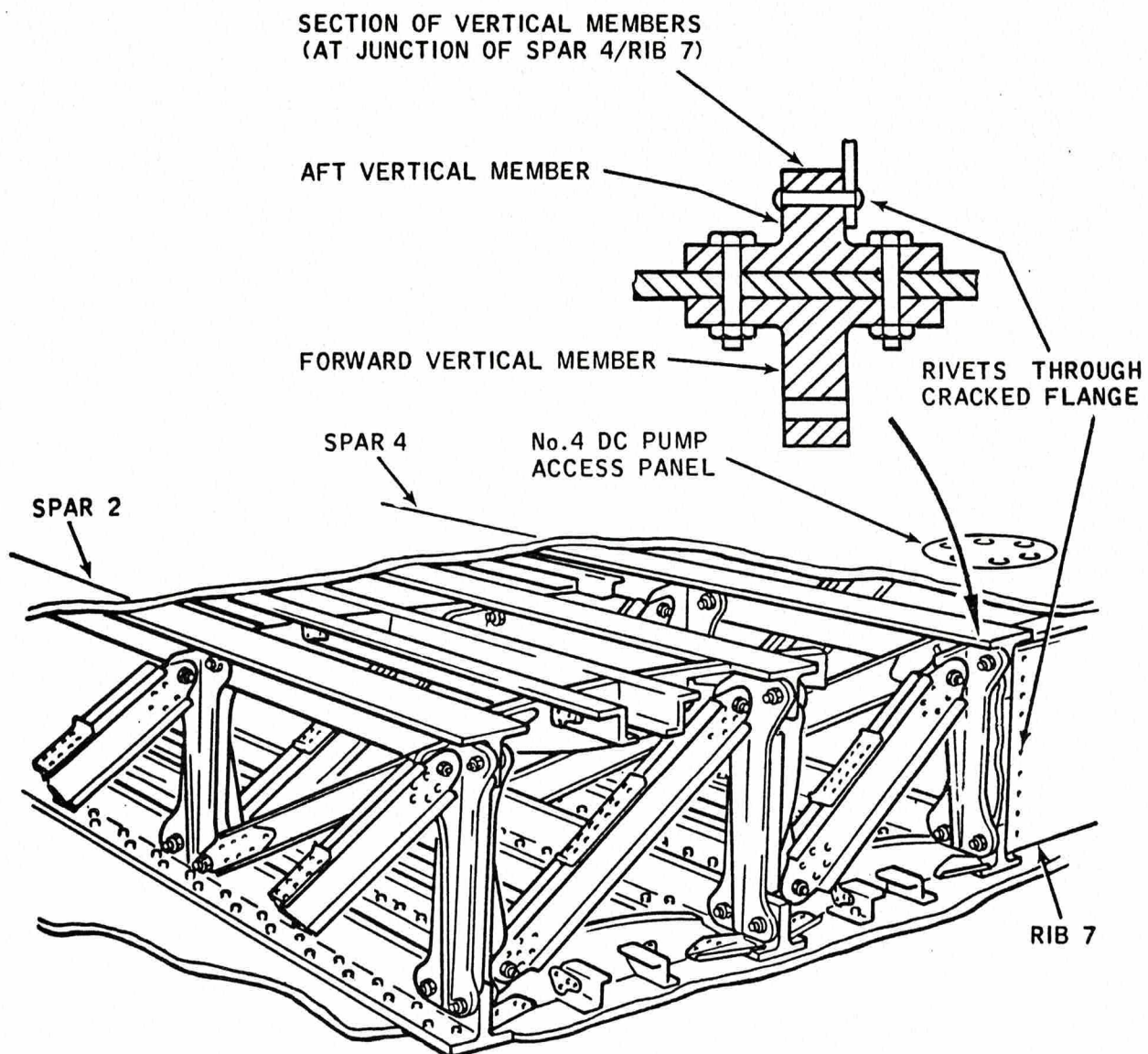
T55

BAC F53 & T55 (SA)

5A3A Section 1

2nd Edition

Safety and Servicing Notes are to be complied with throughout the work detailed on this card.



LEFT WING STRUCTURE, SPAR 4 RIB 7

FIGURE 1

SERVICING PROCEDURE INSPECTION STAGES DO NOT EXCLUDE ADDITIONAL INSPECTION STAGES INCORPORATED AS NECESSARY IN MAINTENANCE CERTIFICATION DOCUMENTS







This file was downloaded  
from the RTFM Library.

Link: [www.scottbouch.com/rtfm](http://www.scottbouch.com/rtfm)

Please see site for usage terms,  
and more aircraft documents.