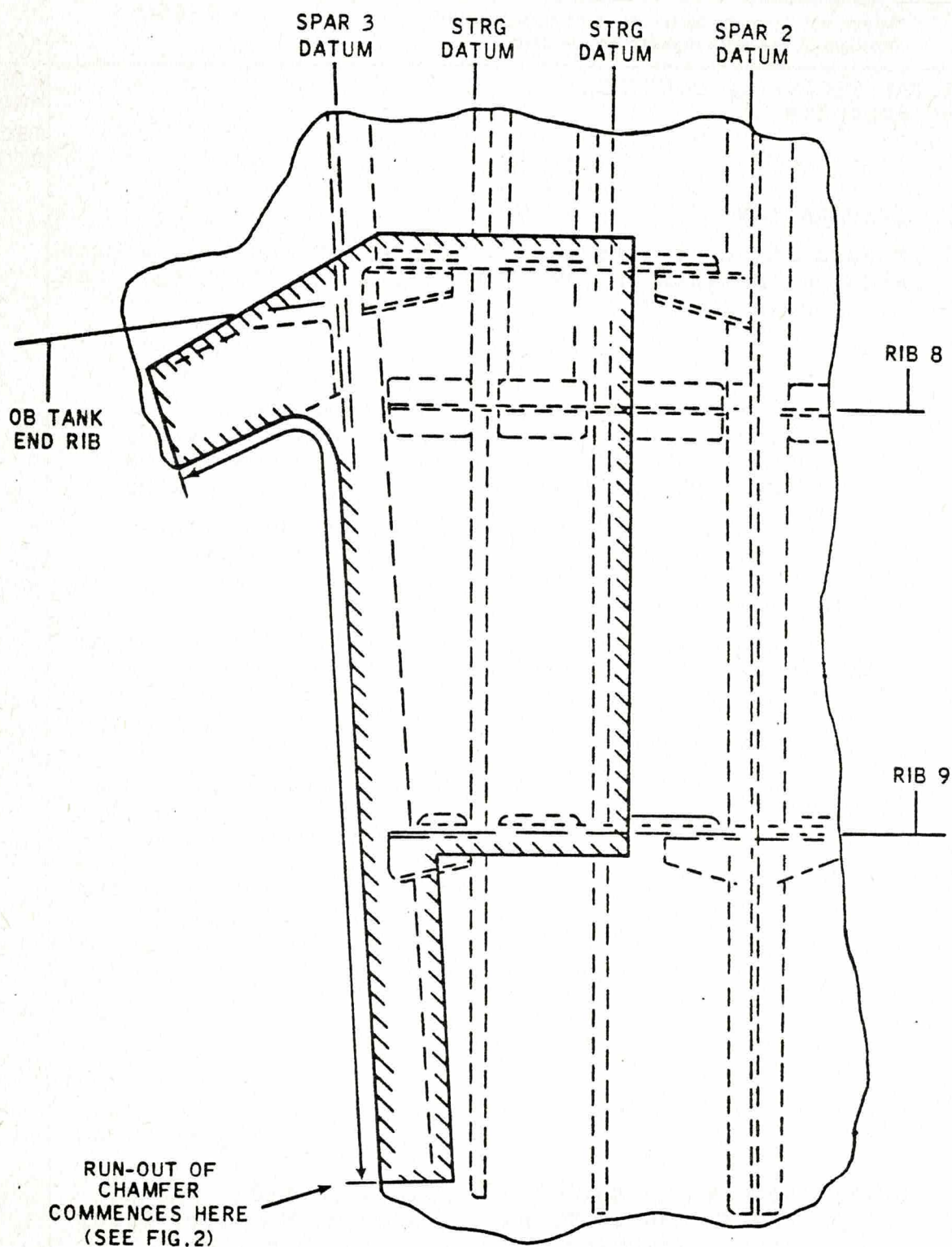


CHAP 4 AIRFRAME	SERVICING PROCEDURE	BAC F53 & T55 (SA)
SP 457 AL 11	F53 T55	5A3A Section 1
SHEET 1 OF 3		2nd Edition
Mainplane Lower Skins. Left and Right in Area of Main Wheel Bay Cut-out/Spar 3/Ribs 8 and 9-Cracking		AFSC 43151 53650
Safety and Servicing Notes are to be complied with throughout the work detailed on this card.		TIME EST
SPECIAL TOOLS AND EQUIPMENT (See Appendix 1)		ASSOCIATED PROCEDURES TECH/NDT/ LTG/13
<u>43151</u>		
1. PREPARATION		
1.1 Undersurface of Left and Right mainplanes in the area shown in Fig.1.	Remove PRC and any external finish, and clean the area.	
<u>53650</u>		
NOTE: If, when carrying out Item 2, no crack originating at the skin edge is found, then, chamfer the left and right skin edges to the extent shown in Figure 2 if not already done. If any cracking is found retain the aircraft serviceable and report as detailed below.		
2. EXAMINATION		
2.1 Under surface of mainplanes.	Carry out NDT examination in accordance with Technique NDT/LTG/13	
3. EXAMINATION		
3.1 Under surface of mainplanes	Using a lamp and at least a 5x magnifier, visually examine for cracks in the skins particularly in the immediate vicinity of the bolt and rivet holes positions indicated in Fig.1	
<u>43151</u>		
4. COMPLETION		
4.1 Under surfaces of main planes.	Re-apply PRC to the area between points B and C as shown on Figure 2.	
NOTE: Report any damage, by telex, to MASM, BAC HQ Riyadh and to Technical Support Manager, Saudi Arabia Technical Support Department, BAC, Warton Aerodrome, Nr. Preston, Lancashire, quoting the aircraft tail number, the location and extent of cracking, hours flown and F.I.		
		Continued Overleaf
SERVICING PROCEDURE INSPECTION STAGES DO NOT EXCLUDE ADDITIONAL INSPECTION STAGES INCORPORATED AS NECESSARY IN MAINTENANCE CERTIFICATION DOCUMENTS		

CHAP 4	AIRFRAME	SERVICING PROCEDURE	BAC F53 & T55 (SA)
SP 457	AL 11	F53 T55	5A3A Section 1
SHEET 2 OF 3			2nd Edition

Safety and Servicing Notes are to be complied with throughout the work detailed on this card.



UNDERSURFACE OF MAINPLANE

FIGURE 1

Continued

SERVICING PROCEDURE INSPECTION STAGES DO NOT EXCLUDE ADDITIONAL INSPECTION STAGES INCORPORATED AS NECESSARY IN MAINTENANCE CERTIFICATION DOCUMENTS



CHAP 4 AIRFRAME  
SP 457 AL 11  
SHEET 3 OF 3

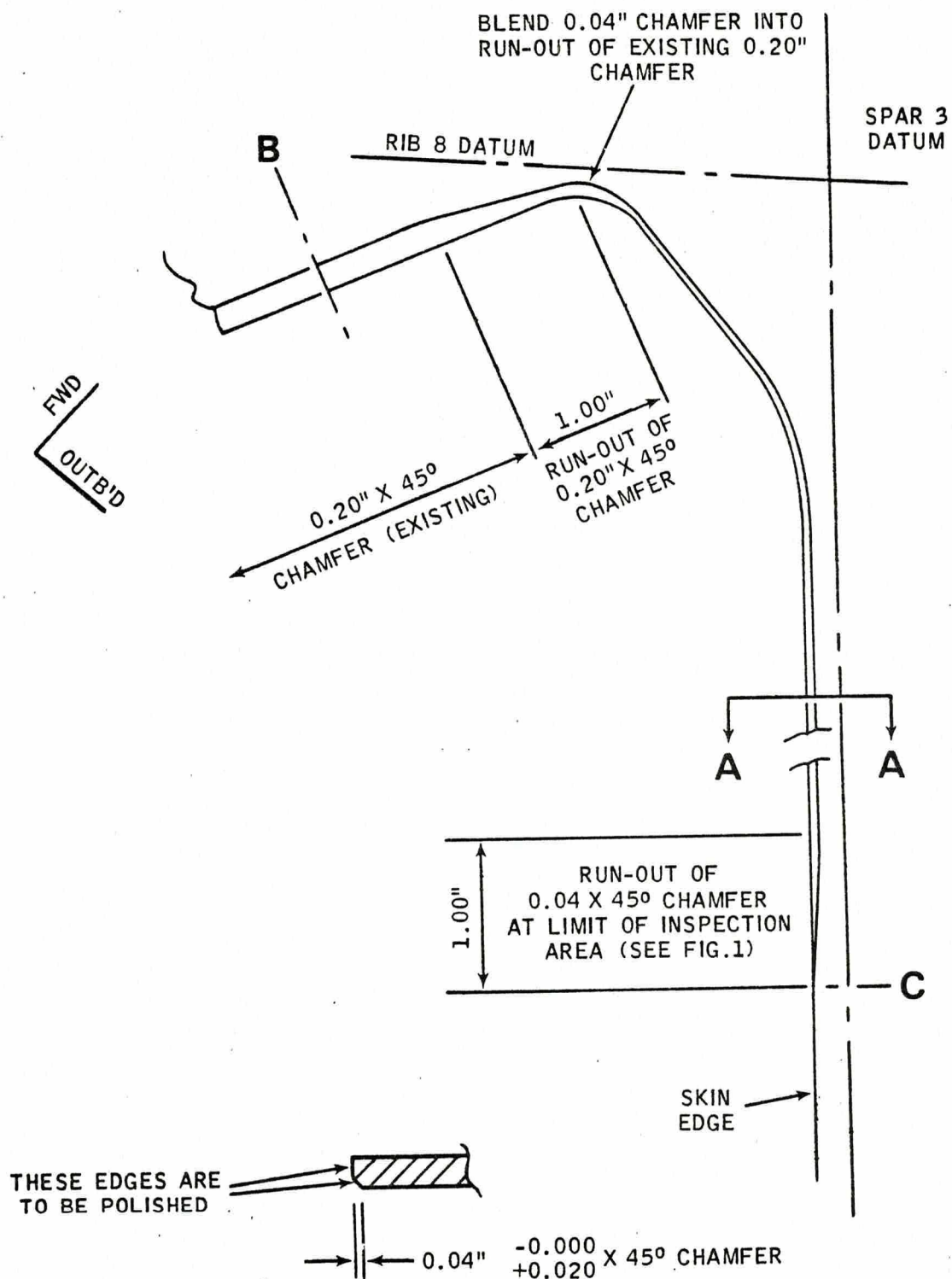
SERVICING PROCEDURE

F53 T55

BAC F53 & T55 (SA)

5A3A Section 1  
2nd Edition

Safety and Servicing Notes are to be complied with  
throughout the work detailed on this card.



SECTION A-A  
UPPER SURFACE OF MAINPLANE

FIGURE 2



This file was downloaded  
from the RTFM Library.

Link: [www.scottbouch.com/rtfm](http://www.scottbouch.com/rtfm)

Please see site for usage terms,  
and more aircraft documents.

