

CONTROLS
FLYING CONTROLS IN COCKPIT

Ref. No.	Part No.	Description	No. off	Matl. Spec.	Cl. of	Place No.
					Equip. M.R. L.M.	
		1 2 3 4 5 6				
	E.H8.45.3	FLYING CONTROLS IN COCKPIT ASSEMBLY	-	-	-	DA1/27
12G/1454	E.A3.45.501	Spares for:- CHARGE, H.E. emergency	1	-	C	DA1/3
	E.H8.45.5	CONTROLS ON PILOT'S FLOOR AND FLOOR FIXING, ASSEMBLY	-	-	-	DA1/28
	E.A3.45.247	Spares for:- AILERON BIAS, ASSEMBLY	1	-	-	DA4/35
	E.E. Co.LTD. BRADFORD	Spares for:-				
5W/176	-	ACTUATOR, linear, type 269	1	-	A	DA4/35
		Attaching parts for Ref 5W/176:-				
2023	E.A6.45.345	Bolt, shouldered at angle end	1	8.92	C	DA4/24
28D/1011238	A25/3E	Bolt, 1/2" BSF at lever end	1	-	C	DA4/22
28M/1011467	A27/ES	Nut, slotted, 1/2" BSF	2	-	C	DA4/29
28P/9527619	SP90/C7	Pin, cotter, split	2	-	C	DA4/32
6212	E.A6.45.337	ANGLE	1	L.72	C	DA4/23
6213	E.A6.45.338	ANGLE	1	L.72	C	DA4/34
		Attaching parts for E.A6.45.337 and E.A6.45.338:-				
28D/9133011	A25/2C	Bolt, 2 BA	2	-	C	DA4/33
28D/9438920	A25/1C	Bolt, 2 BA	4	-	C	DA4/28
28M/1278190	AGS.2001/C/1	Nut, stiff, 2 BA	6	-	C	DA4/26
28W/9419402	SP13/C	Washer	4	-	C	DA4/27
2918	E.A6.45.335	TUBE, torque, and levers, assembly	1	-	B	DA4/17
		Attaching parts for E.A6.45.335:-				
2879	E.A6.45.343	Bolt, shouldered	1	8.92	C	DA4/16
2881	E.A6.45.341	Bush, olive	2	-	C	DA4/25
28M/1011467	A27/ES	Nut, slotted, 1/2" BSF	1	-	C	DA4/30
28P/9527619	SP90/C7	Pin, cotter split	1	-	C	DA4/31
28W/9416197	SP42/G	Washer, tab	1	-	C	DA4/18
	E.H8.45.7	COLUMN, CONTROL, PILOT'S, ASSEMBLY	1	-	A	DA2/1
		Spares for:-				
2A/9500419	HOFFMANN T.17	BEARING, ball-race, aileron, control	1	-	B	DA3/53
2A/9500422	HOFFMANN T.25	BEARING, ball-race, pilot's hand grip	1	-	B	DA3/39
3459	E.A6.45.291	BLOCK, brake cable adjusting	1	DTD.693	C	DA2/3
		Attaching parts for E.A6.45.291:-				
28D/1214031	AS.1242/8C	Bolt, oak hd. 2 BA	1	-	C	DA2/2
28M/5808573	A27/C5	Nut, slotted, 2 BA	1	-	C	DA2/14
28P/9527619	SP90/C7	Pin, cotter, split	1	-	C	DA2/13
26S/9435718	A33/C24	Screw, oak hd. 2 BA	2	-	C	DA2/22
28W/9419475	SP18/C	Washer	1	-	C	DA2/17
71	E.A1.45.107	BUSH, main bearing attached to bottom casting	1	L.65	C	DA2/4
20884	E.A3.45.473	CABLE, brake	1	-	C	DA3/26
		Attaching parts for E.A3.45.473:-				
28N/1045880	AGS.809/2	Collar	1	-	C	DA3/19
28P/1013002	SP/4/7/59	Pin, shackles	1	-	C	DA3/31
28P/9486478	SP90/C5	Pin, cotter, split	1	-	C	DA3/17
5CW/5253	-	CAP, Helvin	1	-	-	DA3/71

CONTROLS
FLYING CONTROLS IN COCKPIT

Ref. No.	Part No.	Description	No. off	Matl. Spec.	Cl. of Equip.	Plate No.	
					M.R. L.M.		
29H/2100	BOWDEN						
	6/40	CLIP, pliable brake cable	1	-	C	DA3/56	
	E.A6.45.245	COLUMN, CONTROL, SUB-ASSEMBLY	1	-	-	DA3/50	
		Spares for:-					
	E.A6.45.247	CASTING, top	1	DTD.300	-	DA3/51	
	E.A1.45.1021	TUBE, 2 1/4" o/d x 20 SWG	1	T.45	-	DA3/54	
	E.A1.45.91	YOKE, bottom casting	1	DTD.300	-	DA3/55	
73	E.A1.45.125	CONTROL, ELEVATOR, GROUP	1	-	A	DA2/35	
		Spares for:-					
2A/9500426	HOFFMANN T.33	BEARING, ball-race	1	-	B	DA2/31	
16283	E.A1.45.177	DIAPHRAGM, ball-race housing mounting	1	DTD.300	C	DA2/33	
6227	E.A1.45.175	HOUSING, ball-race	1	L.45	C	DA2/21	
74	E.A1.45.133	LEVER, ELEVATOR OPERATING, GROUP	1	-	B	DA2/10	
		Consisting of:-					
2A/9500463	SKEFKO CBA.2	BEARING, ball-race	1	-	B	DA2/8	
75	EEAS.3/D	HOUSING, ball-race	1	L.40	C	DA2/9	
	E.A1.45.803	LEVER	1	L.40	-	DA2/24	
82	EEAS.4/20C	WASHER, packing	2	DTD.300	C	DA2/7	
1095	EEAS.37/14A	NIPPLE, 2 BA	12	S.96	C	DA2/19	
	E.A1.45.173	SLEEVE, lever mounting	1	L.40	-	DA2/32	
6225	E.A1.45.105	SOCKET, mounting, elevator control to control column	1	L.40	C	DA2/11	
	EEAS.38/2A	SPOKE, 2 BA (Make from Ref. 28R/6124)	6	S.96	LM	DA2/20	
	E.A1.45.171	TUBE, torque, connecting, socket and lever, 2" o/d x 14 SWG	1	T.4	-	DA2/12	
		Attaching parts for E.A1.45.125:-					
1021	E.A1.45.1153	Bolt, special	1	S.11	C	DA2/16	
28M/13123	A27/JS	Nut, slotted, 3/8" BSF	1	-	C	DA2/18	
28P/9527619	SP90/C7	Pin, cotter, split	1	-	C	DA2/15	
	77	E.A1.45.1025	FORK-END	1	S.11	C	DA3/63
		Attaching parts for E.A1.45.1025:-					
1672	EEAS.37/1A	Nipple	4	S.96	C	DA3/60	
	EEAS.38/1A	Spoke (Make from AGS.935/A)	2	S.96	-	DA3/61	
	E.A6.45.267	GEAR, bevel	1	S.96	-	DA3/46	
21214	E.A6.45.266	HOUSING, control column	1	S.11	C	DA3/36	
	E.A1.45.1059	LABEL, quadrant to mesh centrally with control unit	1	L.72	-	DA3/38	
	E.B6.45.37	LABEL	1	-	-	-	
1132	E.A6.45.215	LEVER, BRAKE CABLE OPERATING, GROUP	1	-	B/MR	DA3/26	
		Spares for:-					
1134	E.A6.45.217	CAP, for collar member	1	DTD.126	C	DA3/30	
1133	E.A6.45.219	COLLAR, fulcrum pin retaining	1	DTD.683	C	DA3/32	
		Attaching parts for E.A6.45.215:-					
28N/5549	AGS.899/2	Collar	2	-	C	DA3/27	
28P/836	SP/4/Y/B9	Pin, shackle	2	-	C	DA3/28	
28P/9486478	SP90/C5	Pin, cotter, split	2	-	C	DA3/29	

CONTROLS
FLYING CONTROLS IN COCKPIT

Ref. No.	Part No.	Description	No. off	Metl. Spec.	Cl. of Equip.	Plate No.
					M.R. L.M.	
		1 2 3 4 5 6				
6211	E.A6.45.289	LEVER, pilot's brake operating	1	Mag.Alloy	C	DA3/1
		Attaching parts for E.A6.45.289:-				
28N/5549	AGS.899/2	Collar	2	-	C	DA3/9
28P/840	SP/4/Y/B14	Pin, shackle	1	-	C	DA3/3
28P/841	SP/4/Y/B15	Pin, shackle	1	-	C	DA3/11
28P/9486478	SP90/C5	Pin, cotter, split	2	-	C	DA3/2
28W/9419475	SP15/C	Washer	1	-	C	DA3/10
2890	E.A3.45.257	LUG, brake lever pivot	1	DTD.683	C	DA3/4
20667	E.A6.45.249	MECHANISM, BRAKE OPERATING, GROUP	1	-	B	DA3/45
		Consisting of:-				
1136	E.A6.45.285	PIN, fulcrum, brake lever cable operating	1	S.92	C	DA3/52
1457	E.A6.45.255	PLUG, screwed, spring retaining	1	DTD.683	C	DA3/64
	E.A6.45.253	PLUNGER	1	L.40	-	DA3/59
	E.A6.45.251	SHAFT	1	S.11	-	DA3/49
80	E.A1.45.679	SPRING	1	DTD.215	C	DA3/62
	E.G7.45.41	MOUNTING, S/W OVERSHOOT STOP, ASSEMBLY	1	-	-	DA3/6
		Spares for:				
	E.B6.81.877	BRACKET clip	1	-	-	DA3/16
	E.B6.81.2253	BRACKET switch	1	-	-	DA3/21
		Attaching parts for E.B6.81.2253:-				
28S/1201448	A31/B10	Screw, ch.hd. 4BA	3	-	C	DA3/66
28M/1086618	AGS.2002/B/1	Nut, stiff, 4BA	2	-	C	
28W/9419465	SP13/B	Washer	2	-	C	
	AS.1900/C	Clip	1	-	-	DA3/67
		Attaching parts for AS.1900/C:-				
28S/9419435	A31/B12	Screw, ch.hd. 4BA	1	-	C	DA3/68
28M/1086618	AGS.2002/B/1	Nut, stiff, 4BA	1	-	C	
28W/1206041	AGS.2035/B	Washer, shakeproof	1	-	C	
	E.G7.45.36	PLATE, top cover	1	-	-	DA3/23
	E.G7.45.39	PLATE, switch mounting	1	-	-	DA3/69
		Attaching parts for E.GG7.45.39:-				
28S/1007489	A33/B14	Screw, csk.hd. 4BA	2	-	C	DA3/70
1454	E.A6.45.263	NUT, clamp, bevel gear ballrace retaining	1	DTD.683	C	DA3/41
1455	E.A6.45.269	NUT, clamp, ballrace retaining	1	DTD.683	C	DA3/46
1456	E.A6.45.271	NUT, clamp, ballrace retaining	1	DTD.683	C	DA3/37
6226	E.A1.45.153	PLATE, cover at bottom casting	2	L.72	C	DA2/28
		Attaching parts for E.A1.45.153:-				
28S/9419435	A31/B12	Screw, ch.hd. 4BA	1	-	C	DA2/27
28W/9416642	SP47/B	Washer, spring	1	-	C	DA2/26
2018	E.A3.45.259	PLATE, brake locking	1	L.72	C	DA3/20
2019	E.A3.45.261	PLATE, brake mechanism retaining	1	L.72	C	DA3/15
		Attaching parts for E.A3.45.261:-				
28D/8346	AS.1248/8C	Bolt, mush.hd. 2BA	3	-	C	DA3/44
28M/10328	AGS.2002/C/1	Nut, stiff, 2BA	3	-	C	DA3/24
1025	EEAS.1/1C	Screw, csk.hd. 2BA	4	-	C	DA3/5

CONTROLS
FLYING CONTROLS IN COCKPIT

Ref. No.	Part No.	Description	No. off	Matl. Spec.	Cl. of Equip.	Part No.		
					M.R. L.M.			
			1	2	3	4	5	6
2020	E.A6.45.273	PLATE, cover, brake mechanism	1	DTD.883	C	DA3/43		
1441	E.A6.45.287	PLUNGER, brake mechanism operating	1	L.40	C	DA3/12		
2021	E.A3.45.265	RING, locking, brake mechanism	1	DTD.883	C	DA3/18		
343	E.A1.31.277	SHIM, brake mechanism cover plate	4	Alum.	C	DA3/42		
	or							
	EEAS.27/8/4							
89	E.A1.45.123	SOCKET, conduit, brake cable adjuster	1	L.40	C	DA3/55		
88	E.A1.45.1029	SPHERE, control column locking	1	DTD.265	C			
2022	E.A3.45.263	SPRING, locking plate compression	1	DTD.215	C	DA3/22		
18197	E.B6.81.859	STOP, airbrake switch overshoot assembly	1	-	C	DA3/8		
21211	E.A1.45.87	SUPPORT, CONTROL COLUMN CASTING, GROUP	1	-	B	DA2/48		
		Consisting of:						
2A/9500419	HOFFMANN T.17	BEARING, ballrace, main control column	2	-	B	DA2/28		
2A/9500422	HOFFMANN T.25	BEARING, ballrace, between sleeve and support casting	2	-	B	DA2/23		
20666	E.A1.45.93	CASTING, control column support	1	DTD.289	A/MR	DA2/25		
91	E.A1.45.1027	FORK END	1	S.11	C	DA2/8		
1975	E.A1.45.961	LEVER, AILERON OPERATING, GROUP	1	-	B	DA2/50		
		Consisting of:						
2A/9500483	SKEFKO CBA.2	BEARING, ballrace	1	-	B	DA2/43		
28G/3825	AGS.798/E	EYE-BOLT	1	-	C	DA2/53		
		Attaching parts for AGS 798/E:						
2914	E.A1.45.483	Collar	1	L.64	C	DA2/52		
28M/1011475	A27/EP	Nut, 1/4" BSF	1	-	C	DA2/47		
75	EEAS.3/D	HOUSING, ballrace	1	L.40	C	DA2/44		
6188	E.A1.45.969	LEVER, operating	1	DTD.683	C	DA2/51		
92	EEAS.4/20C	WASHER, packing	2	L.72	C	DA2/41		
		Attaching parts for E.A1.45.961:-						
90	E.A1.45.1033	Bolt, special	3	S.11	C	DA2/36		
28D/8309	AS.1242/4C	Bolt, csk.hd. 2BA	1	-	C	DA2/49		
28M/9403520	A27/CP	Nut, 2BA	4	-	C	DA2/40		
28W/9419475	SP15/C	Washer, 2BA	1	-	C	DA2/42		
1572	EEAS.37/1A	NIPPLE, 6BA	4	S.96	C	DA2/38		
28M/1006473	A27/CT	NUT, thin, 2BA	2	-	C	DA2/30		
21483	E.A1.45.103	SLEEVE, sprocket mounting	1	L.40	C	DA2/45		
	EEAS.38/1A	SPOKE, 6BA (Make from AGS.935/A)	2	S.96	-	DA2/48		
6205	E.A1.45.619	SPROCKET	1	L.40	C	DA2/39		
41436	E.A1.45.165	STUD, mounting	2	DTD.126A	C	DA2/37		
6189	E.A1.45.993	TUBE, distance, between sprocket and casting	1	T4	C	DA2/34		
5CW/4612	-	SWITCH, 3 way	1	-	B	DA3/7		
		Attaching parts for 5CW/4612:-						
28S/1200080	A32/B8	Screw, rd.hd. 4BA	2	-	C	DA3/13		
28W/1206041	AGS.2035/B	Washer, shakeproof	2	-	C	DA3/14		
1976	E.A1.45.971	TUBE, INNER, AILERON OPERATING, GROUP	1	-	C	DA3/57		
	or							
38087	E.A9.00.159							
		Consisting of						
2A/9500423	HOFFMANN T.29	BEARING, ballrace	1	-	B	DA3/33		

CONTROLS
FLYING CONTROLS IN COCKPIT

Ref. No.	Part No.	Description 1 2 3 4 5 6	No. off	Matl. Spec.	Cl. of Equip.	Plate No.
					M.R. L.M.	
1573	EEAS.37/13A	NIPPLE, 6BA	4	S.96	C	DA3/48
	EEAS.38/1A	SPOKE, 6BA (Make from AGS.935/A)	2	S.96	LM	DA3/47
	E.A1.45.1023	TUBE, operating, 1 1/2" o/d x 14 avg	1	T.45	-	DA3/58
6210	E.A6.45.261	WASHER, special	1	DTD.683	C	DA3/34
6167	E.A3.45.413	WASHER, special	1	Alum	C	DA3/36
13102	E.B6.45.53	WHEEL, PILOT'S CONTROL ASSEMBLY (Mod.1925)	1	-	A	DA4/9
		Spares for:-				
2907	E.A3.81.351	CLAMP, intercomm. wiring	2	DTD.683	C	DA4/20
		Attaching parts for E.A3.81.351:-				
28S/9995324	A32/A16	Screw, rd.hd. 6BA	2	-	C	DA4/21
28S/9436716	A33/B12	Screw, csk.hd. 4BA	1	-	C	DA4/13
28S/9419185	AGS.2935/A	Washer, shakeproof	2	-	C	DA4/19
24757	E.B6.45.66	COVER, switch mounting	1	DTD.610	C	DA4/2
		Attaching parts for E.B6.45.66:-				
28S/14825	A41/B8	Screw, csk.hd. 4BA	2	-	C	DA4/1
2017	E.A6.45.243	COVER, switch inter-comm.	1	LFS.21	C	DA4/6
		Attaching parts for E.A6.45.243:-				
28D/9131782	AS.1242/2B	Bolt, csk.hd. 4BA	2	-	C	DA4/8
22479	E.B6.45.57	MOUNTING, tailplane, trim and isolating switches	1	L.64 or L.65	C/MR	DA4/7
		Attaching parts for E.B6.45.57:-				
28S/1007469	A33/B14	Screw, csk.hd. 4BA	2	-	C	DA4/12
5F/9143294	†	SLEEVE, P.V.C. 7mm x 0.6mm wall	QR	-	C	DA4/15
21216	E.A6.45.297	SOCKET, bomb release switch mounting	1	-	C/MR	DA4/11
	DUNLOP					
5CW/5999	ACM.18864	SWITCH, c/w wiring, isolating (Pre Mod.2548)	1	-	B	DA4/5
	DUNLOP					
5CW/6442	ACM.19438/7	SWITCH, c/w wiring, isolating (Mod.2548)	1	-	B	
	DUNLOP					
5CW/11495	ACM.24484/7	SWITCH, c/w wiring, isolating (Mod.4412)	1	-	B	DA4/4
	DUNLOP					
5CW/6696	AC.14834/7	SWITCH, c/w wiring, 2 way tailplane trim	1	-	B	DA4/3
5CW/4187	-	SWITCH, push button	1	-	B	DA4/14
22478	E.B6.45.55	WHEEL, hand	1	-	C/MR	DA4/10
1015	E.A3.45.109	COVER, sealing, pilot's control column	1	-	C	DA8/14
12092	E.A3.45.7	PEDALS, PILOT'S RUDDER CONTROL BAR, GROUP	1	-	B	DA8/49
		Consisting of:-				
97	E.A3.45.57	BEARING, c/w housing and ballrace	1	-	C	DA6/48
28D/1008151	A25/4E	BOLT, 1/2" BSF	8	MS	C	
	E.A3.45.457	CABLE, HYDRAULIC BRAKE CONTROL ASSEMBLY	-	-	-	DA5/20
		Spares for:-				
22270	E.A3.45.461	BLOCK, pulley support	1	DTD.683	C	DA5/3
		Attaching parts for E.A3.45.461:-				
22271	E.A3.45.466	Block, tapped	1	S.92	C	DA5/17
22272	E.A3.45.467	Block, tapped	1	S.92	C	DA5/4
28D/9436920	A25/1C	Bolt, 2BA	4	-	C	DA5/1

CONTROLS
FLYING CONTROLS IN COCKPIT

Ref. No.	Part No.	Description 1 2 3 4 5 6	No. off	Mtrl. Spec.	Cl. of	Plate No.
					Equip. M.R. L.M.	
16304	E.A3.45.171	BRACKET, lower pulley and cable guard Attaching parts for E.A3.45.171	1	—	C	DA5/21
28D/9436920	A25/1C	Bolt, 2BA	2	—	C	DA5/18
28M/9403520	A27/CP	Nut, 2BA	2	—	C	DA5/13
6330	E.A3.45.173	BRACKET, upper pulley Attaching parts for E.A3.45.173:-	1	L.72	C	DA5/8
28D/9436920	A25/1C	Bolt, 2BA	2	—	C	DA5/12
28M/9403520	A27/CP	Nut, 2BA	2	—	C	DA5/7
12224	E.A3.45.463	GUIDE, cable Attaching parts for E.A3.45.463:-	1	S.92	C	DA5/14
28D/1007971	A25/4B	Bolt, 4BA	1	—	C	DA5/6
28D/9140638	A25/4B	Bolt, 4BA	1	—	C	DA5/11
28W/9419465	SP13/B	Washer	2	—	C	DA5/10
12225	E.A3.45.459	PULLEY, assembly, at control column Attaching parts for E.A3.45.459:-	1	—	B	DA5/18
28D/1011342	A25/7E	Bolt, 1/2" BSF	1	—	C	DA5/2
12226	E.A3.45.469	Washer	2	—	C	DA5/5
28R/13502	AS.111	PULLEY, at brake control valve Attaching parts for AS.111:-	1	—	C	DA5/15
28D/1011240	A25/5E	Bolt, 1/2" BSF	1	—	C	DA5/9
28M/1011467	A27/ES	Nut, slotted, 1/2" BSF	1	—	C	DA5/22
28P/9527619	SP.90/C7	PIN, cotter, split	1	—	C	DA5/23
28W/9418921	SP13/E	Washer	1	—	C	DA5/19
101	E.A3.45.63	LEVER AND SPROCKET ASSEMBLY	1	—	C	DA6/52
1091	EEAS.37/8A	NIPPLE, 4BA	2	S.96	C	DA6/50
6805	E.A3.45.253	PEDALS, PILOT'S RUDDER CONTROL, GROUP Spares for:-	1	—	A	DA6/47
	AS.2183	ARM, RUDDER BAR ASSEMBLY Spares for:-	2	—	—	DA6/4
	AS.2187	EYE-BOLT Attaching parts for AS.2187:-	1	—	—	DA6/21
28M/123412	A24/JS	Nut, slotted, 3/8" BSF	1	—	C	DA6/19
28P/19228	SP90/C8	Pin, cotter, split	1	—	C	DA6/30
		Attaching parts for AS.2183:-				
12069	AS.2180	Bush, upper	1	—	C	DA6/15
12067	AS.2226	Bush, lower	1	—	C	DA6/35
12389	AS.2224	Cap-nut	1	—	C	DA6/3
28P/19235	SP.90/E10	Pin, cotter, split	1	—	C	DA6/5
	AS.2181	Shim	1	—	—	DA6/13
2A/9500420	HOFFMANN T.21	BEARING, ballrace	1	—	B	DA6/42
22419	AS.2175	CAP, worm adjusting	2	—	C	DA6/25
22420	AS.2178	COLLAR, worm adjusting Attaching parts for AS.2178:-	1	—	C	DA6/26
28P/1011123	AGS.859/24	Pin, taper	1	—	C	DA6/27

CONTROLS
FLYING CONTROLS IN COCKPIT

Ref. No.	Part No.	Description	No. off	Mtrl. Spec.	Cl. of Equip.	Plate No.
					M.R. L.M.	
		1 2 3 4 5 6				
12070	AS.2231	LINK, adjusting Attaching parts for AS.2231:-	4	-	C	DA6/20
12068	AS.2196	Bolt, special	2	-	C	DA6/14
6815	AS.2197	Nut, special	2	-	C	DA6/23
28P/9486478	SP90/C5	Pin, cotter, split	2	-	C	DA6/28
12071	AS.2206	LINK-BAR, assembly Attaching parts for AS.2206:-	2	-	C	DA6/16
12062	AS.2202	Bolt, pivot	1	-	C	DA6/29
12066	AS.2203	Bolt, pivot	2	-	C	DA6/45
28M/1013107	A24/CS	Nut, slotted, 2BA	3	-	C	DA6/18
28M/1010998	A24/EP	Nut, 1/2" BSF	3	-	C	DA6/41
28P/9486478	SP90/C5	Pin, cotter, split	3	-	C	DA6/17
28W/9128924	SP14/C	Washer	3	-	C	DA6/22
28W/9410405	SP.15/E	Washer	3	-	C	DA6/39
12863	AS.2198	PEDAL, GROUP Spares for:-	1	-	B	DA6/44
12584	AS.4568	STIRRUP	1	-	C	DA6/34
12864	AS.2199	PEDAL, GROUP Spares for:-	1	-	B	DA6/1
12584	AS.4568	STIRRUP Attaching parts for AS.2198 and AS.2199:-	1	-	C	DA6/2
12065	AS.2209	Bolt, pivot	1	-	C	DA6/38
28M/123412	A24/JS	Nut, slotted, 3/8" BSF	1	-	C	DA6/32
22423	AS.2210	Piece, distance	2	-	C	DA6/39
28P/9527619	SP.90/C7	Pin, cotter, split	1	-	C	DA6/31
25511	AS.2191	PEDESTAL	1	-	C	DA6/46
22422	AS.2189	PLATE, support Attaching parts for AS.2189:-	1	-	C	DA6/40
28D/9438920	A25/1C	Bolt, 2BA	4	-	C	DA6/36
22424	AS.2242	Washer, tab	1	-	C	DA6/37
22421	AS.2179	PLATE, wheel adjustment	1	-	C	DA6/11
	AS.2412	SLEEVE, secured	1	-	B	DA6/8
5803	AS.2411	WORM, adjusting Attaching parts for AS2412 and AS2411:-	1	-	B	DA6/9
12849	AS.3399	Bolt, taper	2	-	C	DA6/24
28M/13266	A24/ES	Nut, slotted, 1/4" BSF	2	-	C	DA6/12
28P/9527619	SP90/C7	Pin, cotter, split	2	-	C	DA6/6
12973	AS.3398	Washer	2	-	C	DA6/7
22198	AS.2188	SPINDLE	1	-	C	DA6/43
12072	AS.2177	WHEEL, adjusting	1	-	C	DA6/10
	EEAS.38/2A	SPOKE, 4BA (Make from AGS.935/B)	2	S.11	-	DA6/51
	E.A3.45.249	UNIT, BRAKE CONTROL, GROUP Spares for:-	1	-	-	DA6/24
16306	E.A3.45.251	BRACKET, support Attaching parts for E.A3.45.251:-	1	L.72	C	DA6/45
28D/9438920	A25/1C	Bolt, 2BA	8	-	C	DA6/44

CONTROLS
FLYING CONTROLS IN COCKPIT

Ref. No.	Part No.	Description	No. off	Mett. Spec.	Cl. of Equip.	Plate No.
					M.R. L.M.	
2025	E.A3.45.189	CAM, plate guide	2	DTD.683	C	DA5/43
28D/1200119	A25/4C	Attaching parts for E.A3.45.189:- Bolt, 2BA	2	-	C	DA5/38
28D/1007976	AS.1242/4C	Bolt, csk.hd. 2BA	1	-	C	DA5/38
28W/9416643	SP47/C	Washer, spring	2	-	C	DA5/40
2026	E.A3.45.191	LEVER, brake valve operating	1	S.96	C	DA5/33
28D/7002428	A25/8C	Attaching parts for E.A3.45.191:- Bolt,	1	-	C	DA5/35
28M/13121	A27/CS	Nut, slotted, 2BA	1	-	C	DA5/25
28P/9527619	SP90/C7	Pin, cotter, split	1	-	C	DA5/30
5166	E.A3.45.193	LINK, tie between valve operating lever and rudder control lever	1	S.11	C	DA5/42
		Consisting of:-				
28K/552	E.A3.45.187	FORK-END	1	-	-	DA5/27
28M/1006473	SP3Y/413L	FORK-END	1	-	C	DA5/34
28M/13253	A27/CT	NUT, thin, 2BA	1	-	C	DA5/28
	A27/CTL	NUT, thin, 2BA	1	-	C	DA5/29
	E.A3.45.193A	ROD	1	S.11	-	DA5/41
		Attaching parts for E.A3.45.193:-				
28N/6549	AGS.899/2	Collar	2	-	C	DA5/28
2027	E.A3.45.195	Pin, special	1	S.11	C	DA5/37
28P/837	SP4/Y/B11	Pin, shackle	1	-	C	DA5/32
28P/9527619	SP90/C7	Pin, cotter, split	2	-	C	DA5/31
28W/9419475	SP15/C	Washer	1	-	C	DA5/39
98	E.A1.45.477	SPRING, torsion, between aileron control and tension lever	1	DTD.215	C	DA4/37
	E.A3.45.477	COVER, PRESSURE BOX, ASSEMBLY	-	-	-	DA7/38
		Spares for:-				
21349	E.A3.45.479	COVER, access	1	-	B	DA7/28
21348	E.A3.45.475	PANEL, assembly	1	-	B	DA7/34
	E.A3.45.21	MOUNTING, AILERON, ELEVATOR AND RUDDER CONTROL LEVERS AT PRESSURE BULKHEAD, GROUP	1	-	-	DA7/15
		Spares for:-				
8195	E.A3.45.121	BAR, stop, top	1	DTD.300	C	DA7/24
8196	E.A3.45.123	BAR, stop, bottom	1	DTD.300	C	DA7/35
		Attaching parts for E.A3.45.121 and E.A3.45.123:-				
28D/9140644	A25/9C	Bolt, 2BA	4	-	C	DA7/20
28M/10288	AGS.2001/C/1	Nut, stiff, 2BA	4	-	C	DA7/31
28W/9419404	SP16/C	Washer	4	-	C	DA7/29
1535	E.A3.45.27	BOLT, stop, control levers	5	-	C	DA7/32
1534	E.A1.45.1207	BOLT, stop, elevator at pressure bulkhead	1	S.11	C	DA7/33
8197	E.A3.45.125	BRACKET, stop, bar	6	-	C	DA7/27
8198	E.A3.45.255	BRACKET, stop, bar	2	-	C	DA7/21
		Attaching parts for E.A3.45.125 and E.A3.45.255:-				
28D/9133011	A25/2C	Bolt, 2BA	2	-	C	DA7/25
	or					
28D/8307	AS.1242/2C	Bolt, csk.hd. 2BA	2	-	C	DA7/28
28M/10288	AGS.2001/C/1	Nut, stiff, 2BA	2	-	C	DA7/22
28W/9419404	SP16/C	Washer	2	-	C	DA7/23

CONTROLS
FLYING CONTROLS IN COCKPIT

Ref. No.	Part No.	Description	No. off	Mati. Spec.	Cl. of Equip.	Plate No.
					M.R. L.M.	
		1 2 3 4 5 6				
3878	E.A3.45.23	CASTING, lever control	1	-	C	DA7/37
109	E.A1.45.343	LEVER, CONTROL, GROUP	1	-	B	DA7/1
		Spares for:-				
33007	E.A1.45.361	END-PIECE, control lever mounting	2	L.40	C	DA7/13
		Attaching parts for E A1.45.361.				
28D/9133011	A25/2C	Bolt, 2BA	5	-	C	DA7/9
28M/10288	AGS.2001/C/1	Nut, stiff, 2BA	5	-	C	DA7/11
28W/9419475	SP15/C	Washer	5	-	C	DA7/10
24754	E.A1.45.349	HOUSING	1	DTD.289	C	DA7/14
112	E.A1.45.345	LEVER, c/w ballrace	6	-	C	DA7/2
		Attaching parts for E A1.45.345				
2739	EEAS.13/2	Bolt	4	S.96	C	DA7/5
111	E.A1.45.367	Dowel	1	S.1	C	DA7/12
28M/10290	AGS.2001/E/1	Nut, stiff, 1/4" BSF	4	-	C	DA7/3
28W/9419487	SP16/E	Washer	4	-	C	DA7/4
1948	E.A1.45.351	RING, sealing, outboard	1	L.45	C	DA7/17
1949	E.A1.45.353	RING, sealing, centre	1	L.45	C	DA7/18
1950	E.A1.45.355	RING, sealing, inner	1	L.45	C	DA7/16
		Attaching parts for E.A1.45.343				
28D/1200119	A25/4C	Bolt, 2BA	2	-	C	DA7/6
28D/9133012	A25/3C	Bolt, 2BA	6	-	C	DA7/8
28M/10288	AGS.2001/C/1	Nut, stiff, 2BA	8	-	C	DA7/7
28M/1007404	A27/JT	NUT, thin, 3/8" BSF, locking stop bolt	6	-	C	DA7/30
113	E.A3.45.25	SEAL, rubber, between control lever casing and pressure bulkhead	1	-	C	DA7/36
3577	E.A3.45.309	TUBE, CONTROL, INTERMEDIATE, FROM CONTROL COLUMN TO ELEVATOR AT REAR OF PRESSURE BULKHEAD, GROUP	1	-	B	DA1/26
		Spares for				
1683	EEAS.47/2	FORK-END, adjusting	1	DTD.683	C	DA1/16
3578	E.A3.45.339	TUBE, CONTROL, FROM CONTROL COLUMN TO AILERON CONTROL LEVER AT REAR OF PRESSURE BULKHEAD, GROUP	1	-	B	DA1/41
		Spares for				
	E.A3.45.329	TUBE, control forward port on	1	-	-	DA1/36
	E.A3.45.335	TUBE, CONTROL, AFT, GROUP	1	-	-	DA1/39
		Spares for:-				
1683	EEAS.47/2	FORK-END, adjusting	1	DTD.683	C	DA1/37
		Attaching parts for E A3.45.329 and E.A3.45.335:				
28D/1012906	A25/22C	Bolt, 2BA	2	-	C	DA1/43
26614	AS.494/JA	Bush, taper, shear	4	-	C	DA1/33
28M/13121	A27/CS	Nut, slotted, 2BA	2	-	C	DA1/31
28P/9527619	SP90/C7	Pin, cotter, split	2	-	C	DA1/29

CONTROLS
FLYING CONTROLS IN COCKPIT

Ref. No.	Part No.	Description 1 2 3 4 5 6	No. off	Matl. Spec.	Cl. of Equip.	Plate No.
					M.H. L.M.	
3579	E.A3.45.345	TUBE, CONTROL FROM PILOT'S RUDDER BAR TO RUDDER LEVER AT REAR OF PRESSURE BULKHEAD, GROUP Spares for:-	1	-	B	DA1/42
	E.A3.45.329	TUBE, control forward portion	1	-	-	DA1/38
	E.A3.45.341	TUBE, AFT PORTION, GROUP Spares for:-	1	-	-	DA1/40
1683	EEAS.47/2	FORK-END, adjusting Attaching parts for E.A3.45.329 and E.A3.45.341:-	1	DTD.683	C	DA1/38
28D/1012995	A25/22C	Bolt, 2BA	2	-	C	DA1/44
26614	AS484/JA	Bush, taper, shear	4	-	C	DA1/34
28M/13121	A27/CS	Nut, slotted, 2BA	2	-	C	DA1/32
28P/9527619	SP90/C7	Pin, cotter, split	2	-	C	DA1/30
3581	E.A3.45.347	TUBE, CONTROL, FROM CONTROL COLUMN LEVER TO ELEVATOR LEVER, GROUP Spares for:-	1	-	B	DA1/25
1683	EEAS.47/2	FORK-END, adjusting	1	DTD.683	C	DA1/17
3580	E.A3.45.351	TUBE, CONTROL, AILERON AND RUDDER AT REAR OF PRESSURE BULKHEAD, GROUP Spares for:-	2	-	B	DA1/24
1683	EEAS.47/2	FORK-END, adjusting	1	DTD.683	C	DA1/18
	E.H8.46.3	TUBE, CONTROL, ELEVATOR, AT REAR OF PRESSURE BULKHEAD, GROUP Spares for:-	1	-	-	DA1/45
1683	EEAS.47/2	FORK-END, adjusting Attaching parts for E.A3.45.309, E.A3.45.339, E.A3.45.345, E.A3.45.347, E.A3.45.351 and E.H8.46.3:-	1	-	-	DA1/46
67	EEAS.13/1	Bolt	2	S.96	C	DA1/14
68	EEAS.14	Bush	2	S.96	C	DA1/15
3569	EEAS.63/E	Nut	2	S.96	C	DA1/20
3570	EEAS.127	Piece, distance	2	S.96	C	DA1/19
28P/9527619	SP90/C7	Pin, cotter, split	2	-	C	
	E.G5.45.21	UNIT, SNATCH, ASSEMBLY Spares for:-	1	-	-	DA8/19
8199	E.A1.45.609	BRACKET	1	-	C	DA8/8
5264	E.A1.45.611	SUPPORT Attaching parts for E.A1.45.611:-	1	-	C	DA8/2
28D/1200119	A25/4C	Bolt, 2BA	4	-	C	DA8/1
28M/10288	AGS.2001/C/1	Nut, stiff, 2BA	4	-	C	DA8/7
	E.G5.45.23	SWITCH, SNATCH UNIT, INSTALLATION Spares for:-	-	-	-	DA8/18
41815	E.G5.45.25	BRACKET, switch mounting, assembly Attaching parts for E.G5.45.25:-	1	-	C	DA8/23
28D/9140645	A25/10C	Bolt, 2BA	1	-	C	DA8/25
28M/10288	AGS.2001/C/1	Nut, stiff, 2BA	1	-	C	DA8/20
34467	E.B5.45.39	Pin, assembly	1	-	C	DA8/24
28P/5412	AGS.1551/2	Pin, locking	1	-	C	DA8/22
28W/9419402	SP13/C	Washer	1	-	C	DA8/21

CONTROLS
FLYING CONTROLS IN COCKPIT

Ref. No.	Part No.	Description 1 2 3 4 5 6	No. off	Matl. Spec.	Cl. of	Place No.
					Equip. M.R. L.M.	
41816	E.G5.45.35	PLATE, switch mounting	1	—	C	DA8/16
28D/1008149	A25/2B	Attaching parts for E.G5.45.35:-	2	—	C	DA8/12
28W/9419401	SP10/B	Bolt, 4BA Washer	2	—	C	DA8/13
26DK/23688	EEAS.566	SLEEVE	1	—	C	DA8/9
5CW/6533	NSF.8824/B104	SWITCH	1	—	B	DA8/10
5CW/9711	NSF.26048	Attaching parts for NSF.8824/B104:-	1	—	C	DA8/17
34466	E.G5.45.37	Nut Washer, tab, 22swg	1	S.510	C	DA8/11
27L/5337	MARTIN BAKER MBCJ/1002	UNIT snatch gas operated	1	—	A	DA8/15
5256	E.A3.45.437 or MARTIN BAKER	Attaching parts for MBCJ/1002.	1	T.36	C	DA8/6
28M/7002430	O/MBEU/1806EE	Bush	1	—	—	—
3605	AGS.2002/E/1	Nut, stiff, ¼ BSF	2	—	C	DA8/3
	E.A1.45.613	Stud	1	L.40	C	DA8/5
	or A/MBEU/1805EE	Stud	1	—	—	—
28W/9419405	SP15/E	Washer ¼	2	—	C	DA8/4

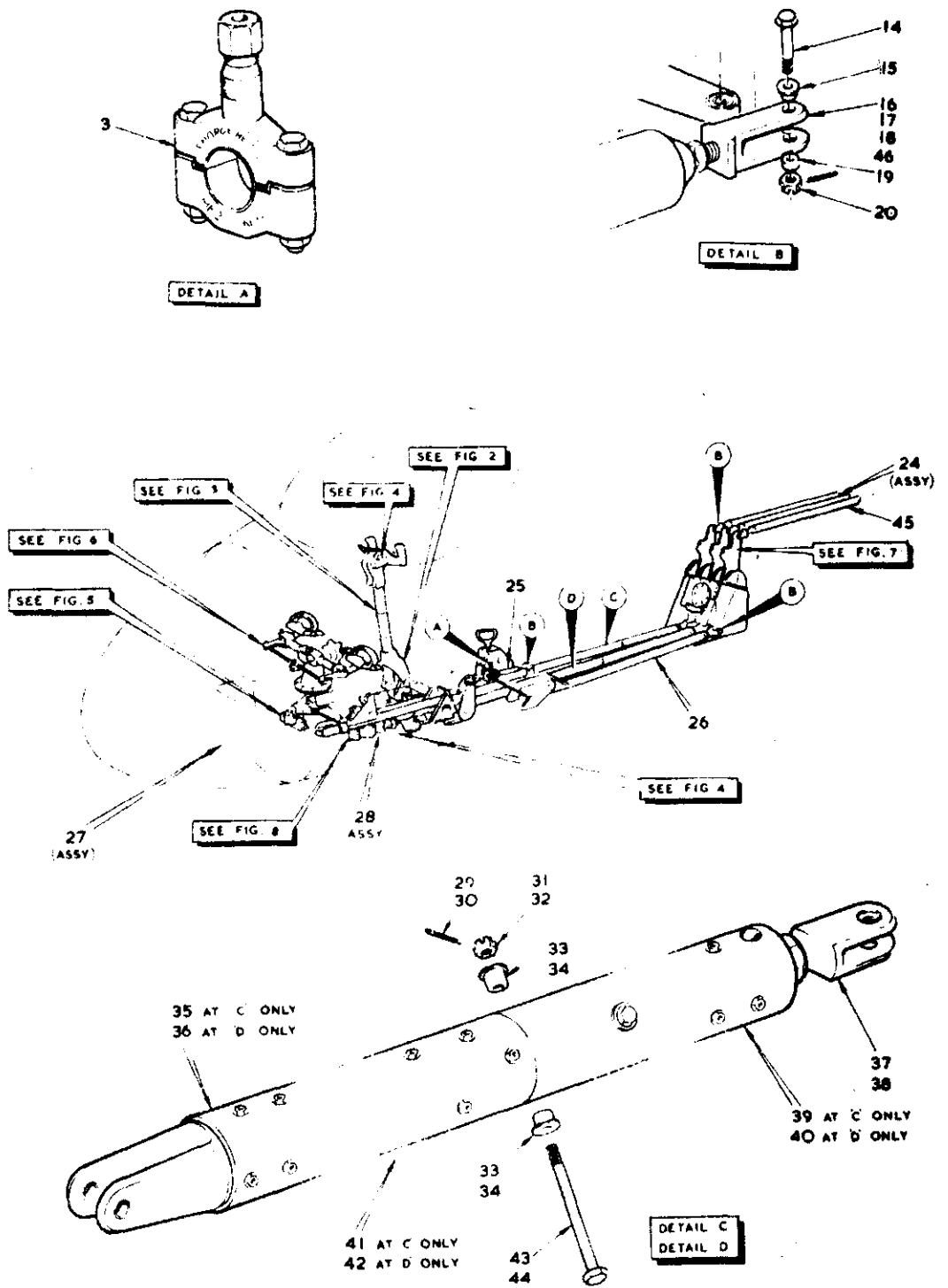


FIG. I FLYING CONTROLS IN COCKPIT

A.

SECT DA

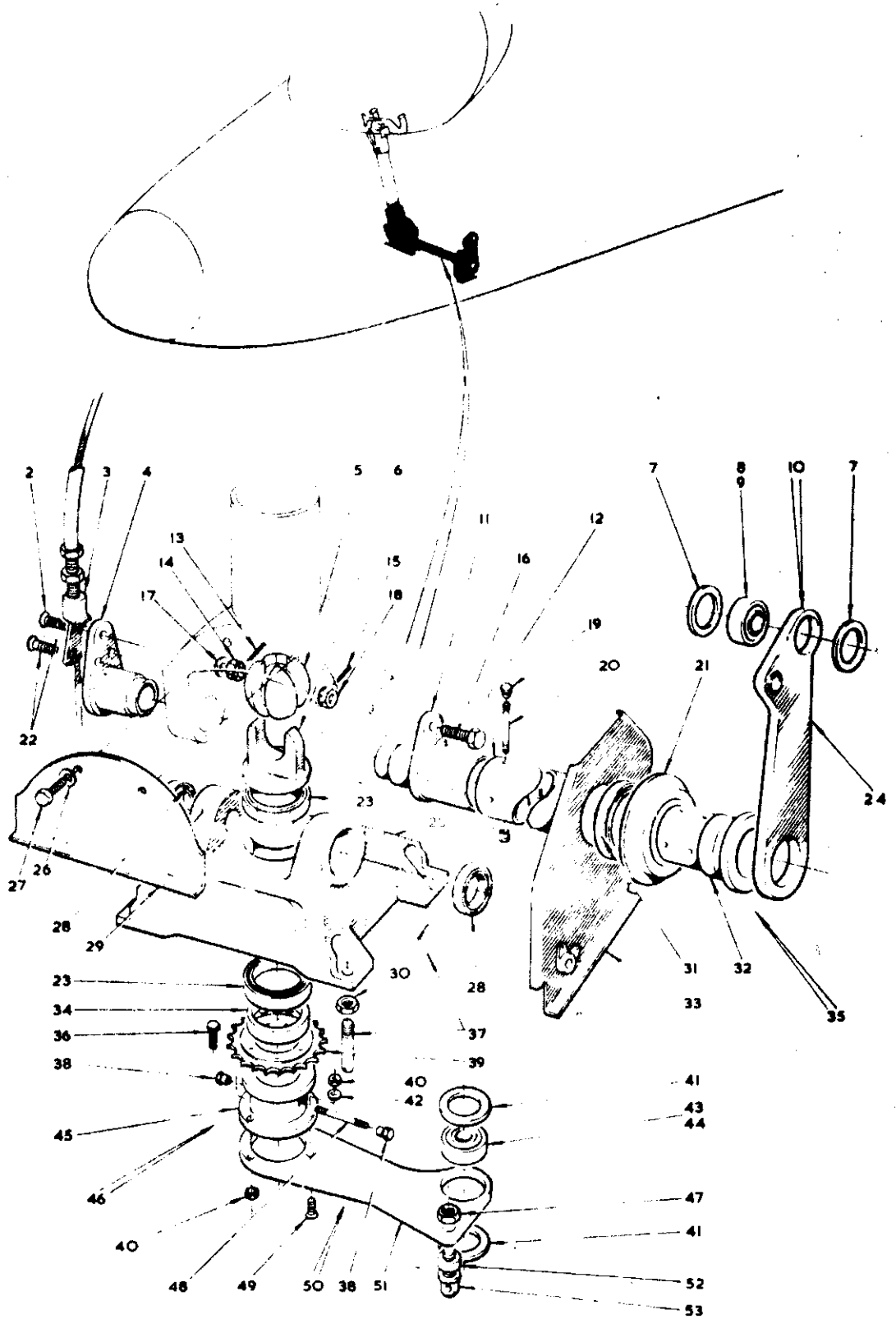


FIG. 2 FLYING CONTROLS IN COCKPIT

A.

SECT. DA

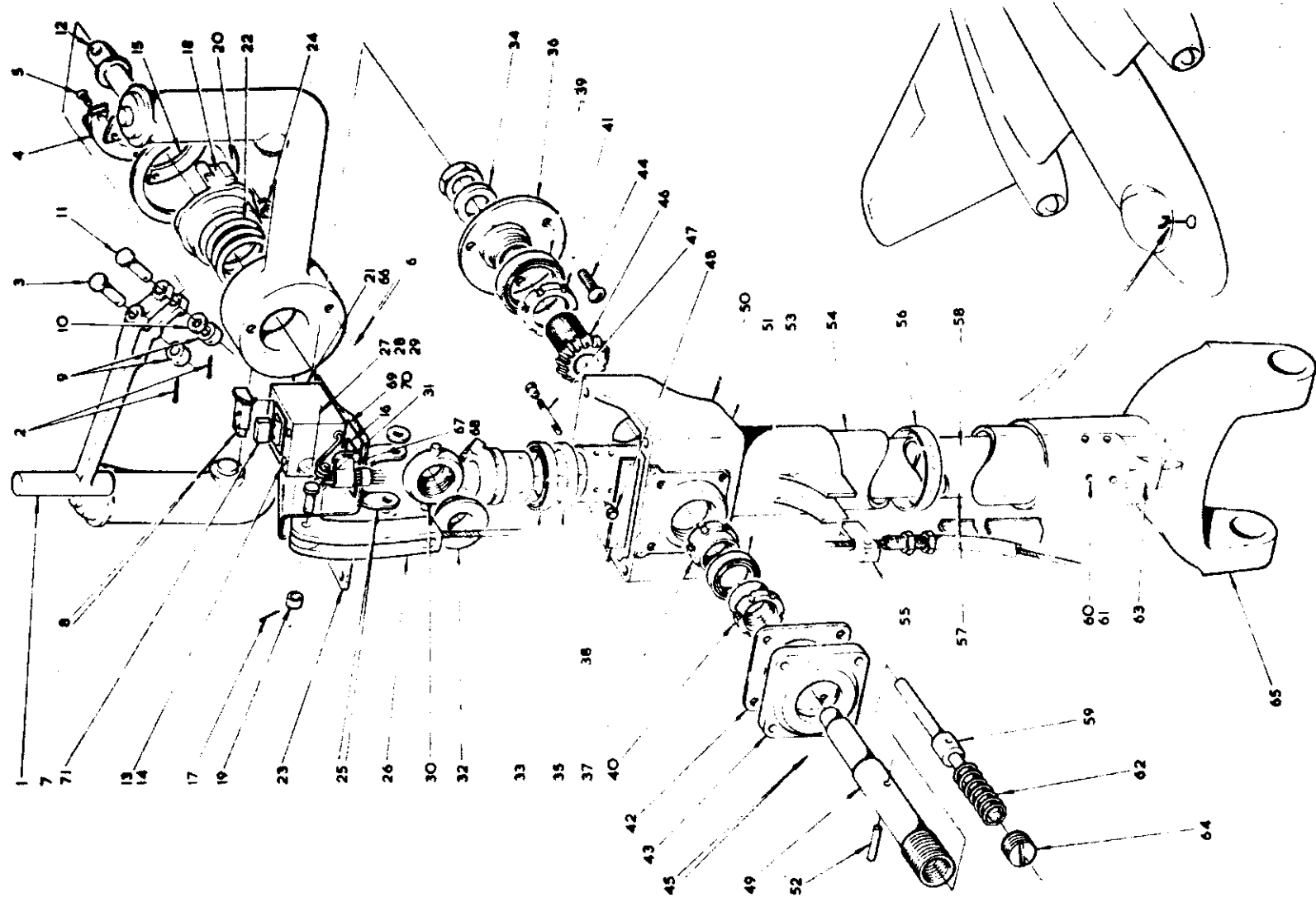


FIG. 3 FLYING CONTROLS IN COCKPIT

SECT 04

A

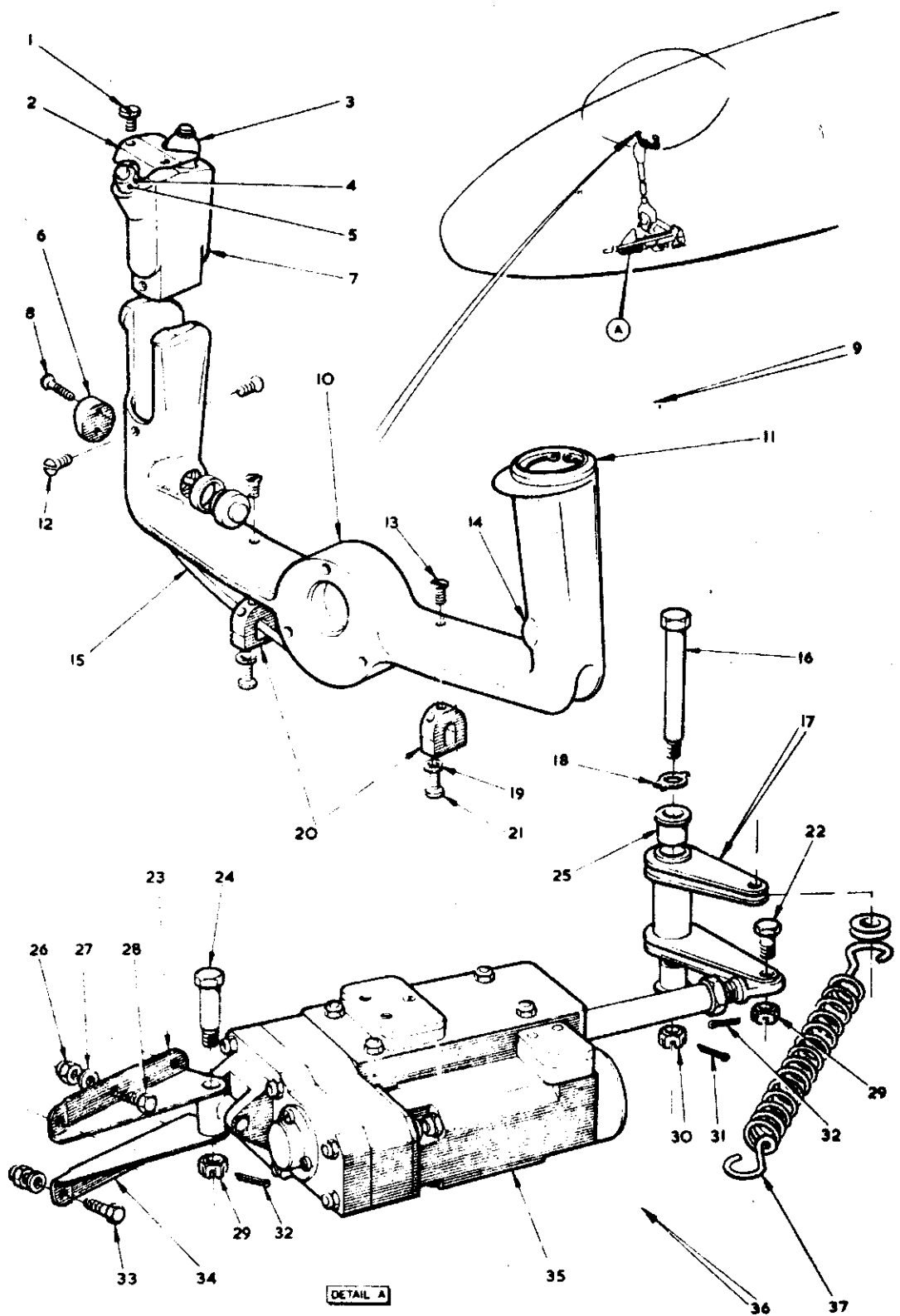


FIG. 4 FLYING CONTROLS IN COCKPIT

A.

SECT DA

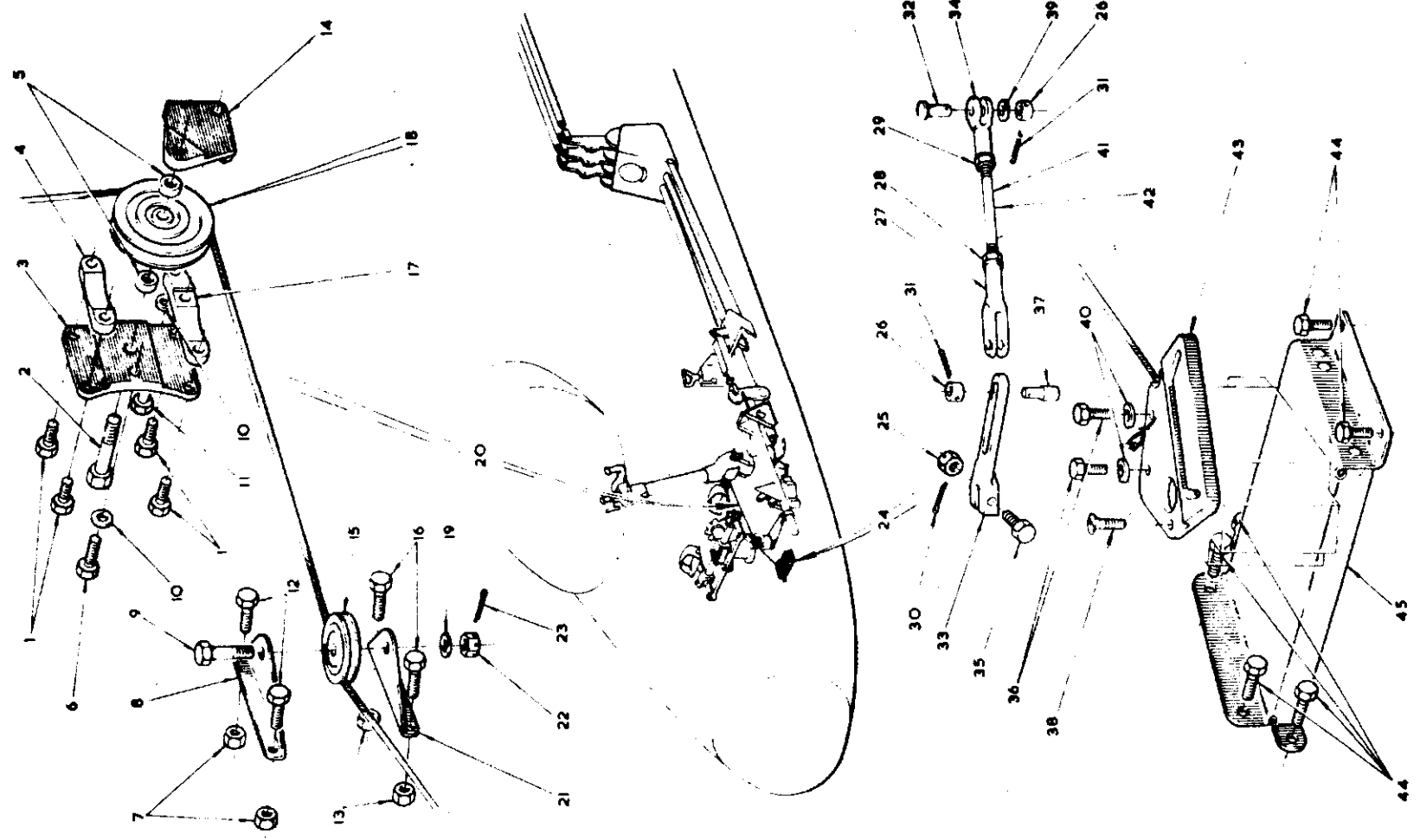


FIG. 5 FLYING CONTROLS IN COCKPIT

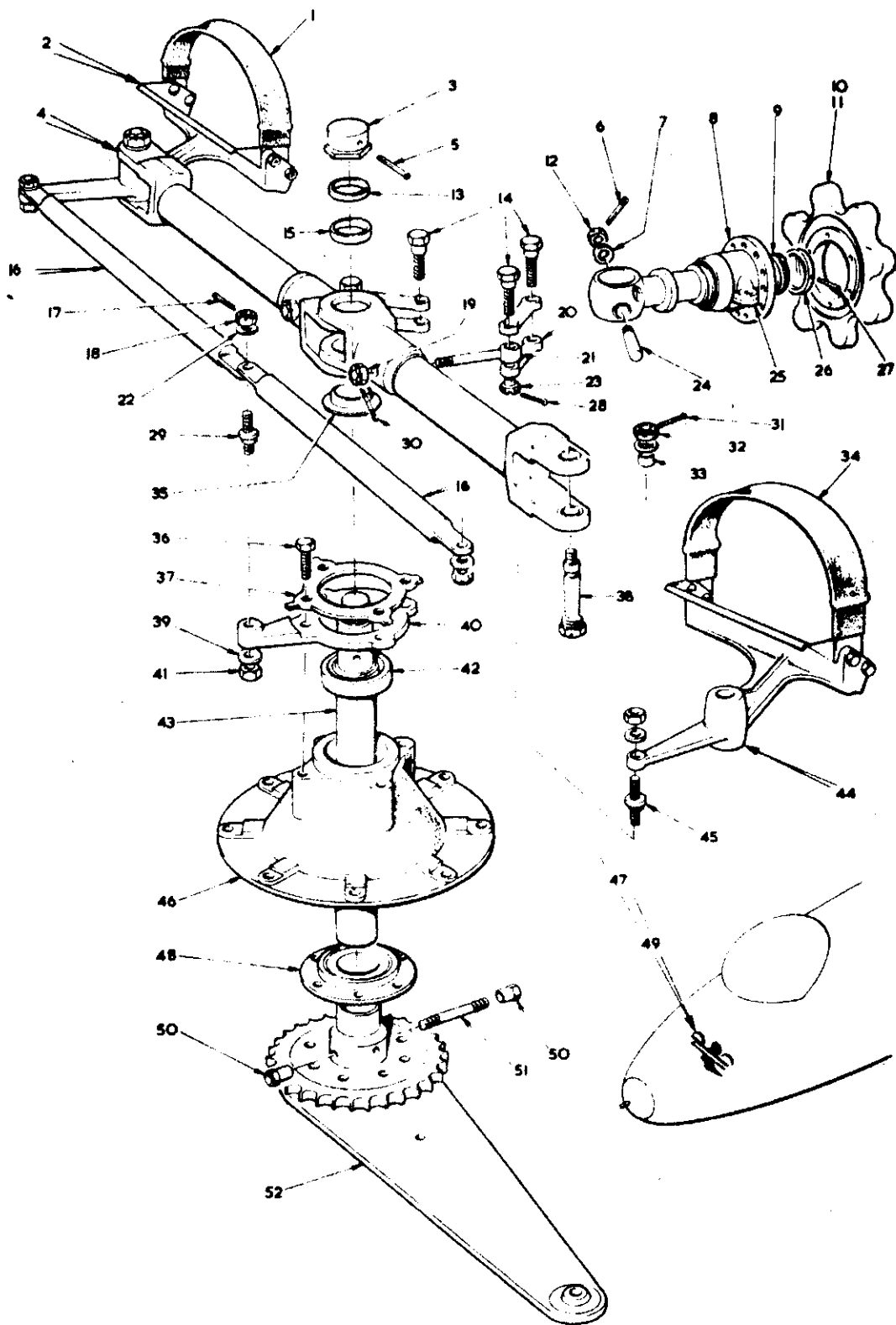
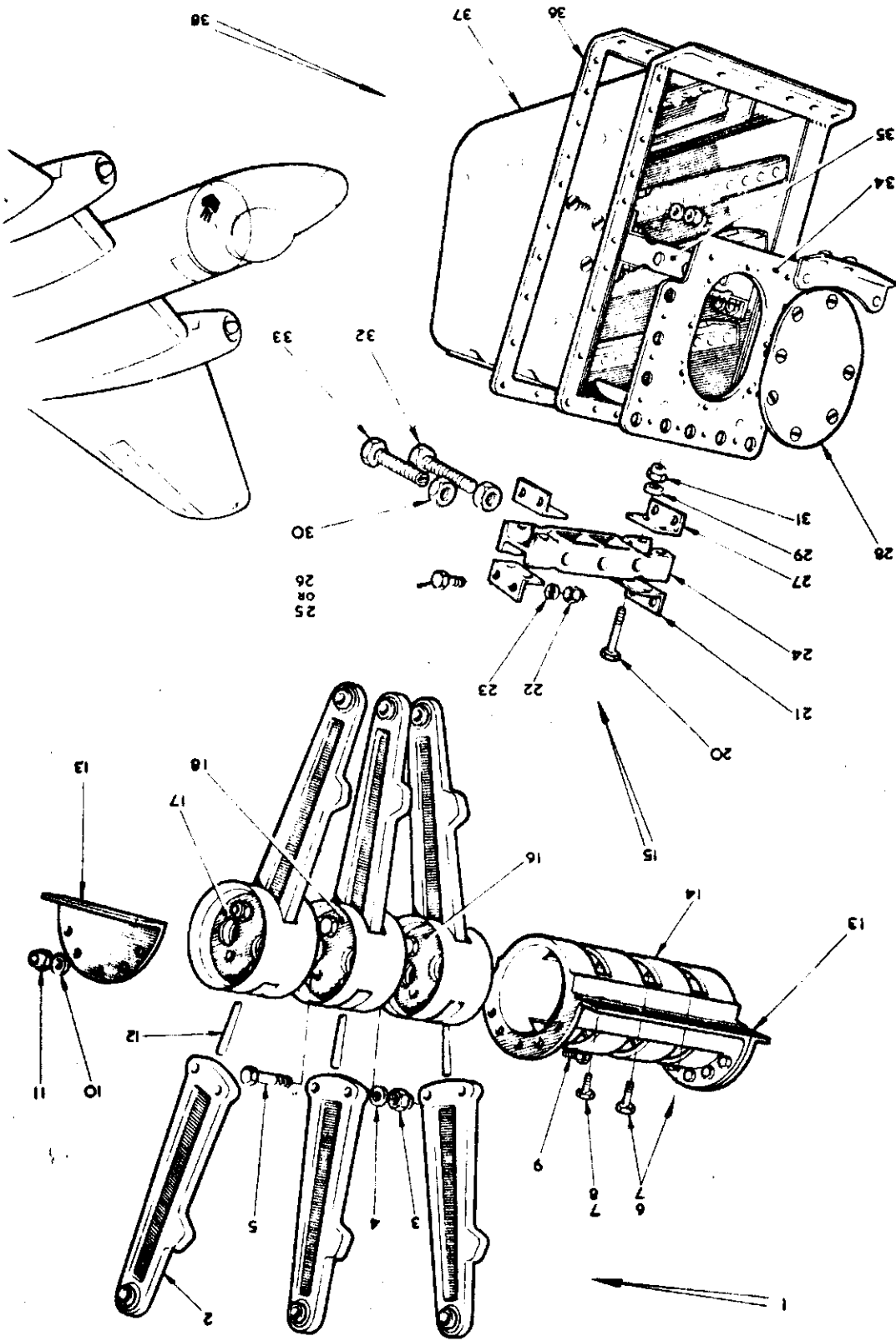


FIG.6 FLYING CONTROLS IN COCKPIT

A.

SECT DA

FIG. 7 FLYING CONTROLS IN COCKPIT



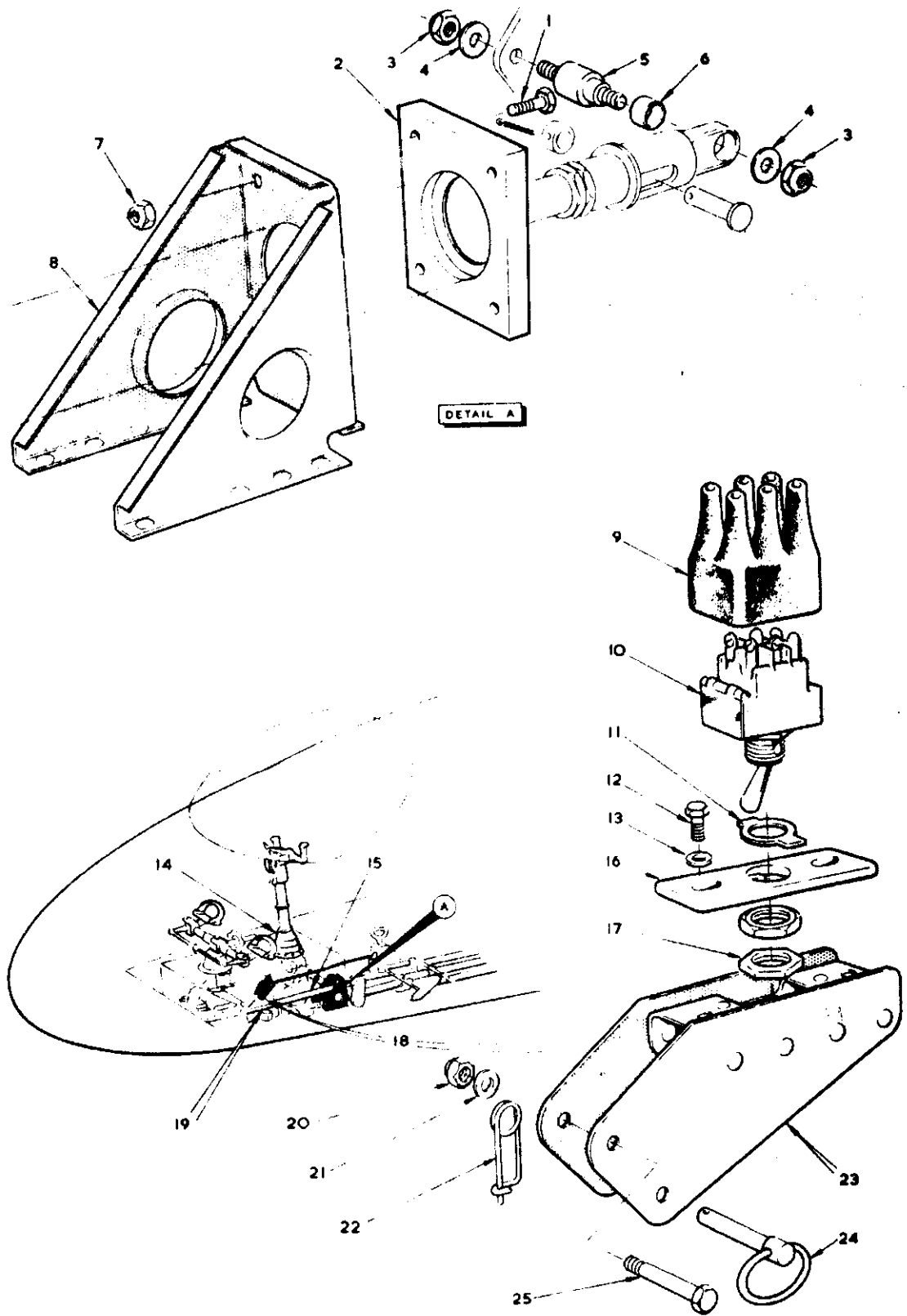


FIG. 8 FLYING CONTROLS IN COCKPIT

A.

SECT 0A

CONTROLS
FLYING CONTROLS IN CONTROL FUSELAGE

Ref. No.	Part No.	Description	No. off	Matl. Spec.	Cl. of Equip.	Place No.
					M.R. L.M.	
		1 2 3 4 5 6				
	E.C4.45.17	CONTROLS, FLYING, IN CENTRE FUSELAGE ASSEMBLY	-	-	-	DB1/1
	E.C4.45.23	LEVER, AILERON, MOUNTING, AT FRAME 22, ASSEMBLY	1	-	-	DB1/2
	E.C4.45.25	LEVER ASSEMBLY	1	-	-	DB1/3
2A/9500420	HOFFMANN T.21	BEARING, ballrace	2	-	B	DB1/4
	E.A9.45.597	LEVER, top assembly	1	-	-	DB1/5
	E.A1.45.225	LEVER, bottom, assembly	1	-	-	DB1/6
	E.A1.45.1031	SPINDLE	1	-	-	DB1/7
21119	E.A1.45.243	SPOOL, retaining	1	-	C	DB1/8
	EEAS.37/14A	Nipple	4	-	C	DB1/9
	EEAS.38/2A	Spoke (Make from AGS.935/B)	2	S.96	LM	DB1/10
	7768	LEVER, AILERON IDLE, AT FRAME 22, ASSEMBLY	1	-	B	DB2/1
		Spares for:-				
2A/9500419	HOFFMANN T.17	BEARING, ballrace	2	-	B	DB2/2
1937	E.A1.45.251	HOUSING, ballrace	2	-	C	DB2/3
	E.A1.45.224	LEVER, assembly	1	-	-	DB2/4
20842	E.A1.45.253	SPINDLE	1	-	C	DB2/5
7760	E.A1.45.485	SUPPORT, CONTROL TUBE BETWEEN FRAMES 12 and 13 ASSEMBLY	1	-	A/MR	DB1/11
		Spares for:-				
	FAIREY AVIATION					
2035	FS.15	BEARING, roller	3	-	B	DB1/12
10279	E.A1.45.463	SUPPORT	1	-	C	DB1/16
		Attaching parts for E.A1.45.485:-				
28D/9133012	A25/3C	Bolt, 2 BA	6	-	C	DB1/18
28M/9403520	A27/CP	Nut, 2 BA	6	-	C	DB1/17
	7762	SUPPORT, CONTROL TUBE, AT FRAME 15, ASSEMBLY	1	-	A/MR	DB1/18
		Spares for:-				
	FAIREY AVIATION					
2035	FS.515	BEARING, roller	3	-	B	DB1/19
10280	E.A1.45.465	SUPPORT	1	-	C	DB1/20
		Attaching parts for E.A1.45.487:-				
28D/1200119	A25/4C	Bolt, 2 BA	6	-	C	DB1/21
28M/9403520	A27/CP	Nut, 2 BA	6	-	C	DB1/22
	7763	SUPPORT, CONTROL TUBE, AT FRAME 20, ASSEMBLY	1	-	A/MR	DB2/6
		Spares for:-				
	FAIREY AVIATION					
2035	FS.515	BEARING, roller	3	-	B	DB2/7
10281	E.A1.45.467	SUPPORT	1	-	C	DB2/8
		Attaching parts for E.A1.45.489:-				
28D/9133012	A25/3C	Bolt, 2 BA	6	-	C	DB2/9
28M/9403520	A27/CP	Nut, 2 BA	6	-	C	DB2/10
	EEAS.15/64/ 11/ONR	Strip, pecking	3	-	C	DB2/11

CONTROLS
FLYING CONTROLS IN CENTRE FUSELAGE

Ref. No.	Part No.	Description 1 2 3 4 5 6	No. off	Mater. Spec.	Cl. of	Plate
					Equip. M.R. L.M.	
7765	E.A1.45.491	SUPPORT, CONTROL TUBE, AT FRAME 23, ASSEMBLY Spares for:-	1	—	A/MR	DB2/12
2035	FAIREY AVIATION FS.515	BEARING, roller	2	—	B	DB2/13
10282	E.A1.45.469	SUPPORT Attaching parts for E.A1.45.491.	1	—	C	DB2/14
28D/1200119	A25/4C	Bolt, 2 BA	4	—	C	DB2/15
28M/9403520	A27/CP	Nut, 2 BA	4	—	C	DB2/16
7766	E.A1.45.699	SUPPORT, CONTROL TUBE, AT FRAME 27, ASSEMBLY Spares for:-	1	—	A/MR	DB2/17
2035	FAIREY AVIATION FS.515	BEARING, roller	2	—	B	DB2/18
77067	E.A1.45.497	SUPPORT, CONTROL TUBE, AT FRAME 30A, ASSEMBLY Spares for:-	1	—	A/MR	DB1/24
2035	FAIREY AVIATION FS.515	BEARING, roller	2	—	B	DB1/25
3586	E.A3.45.359	TUBE, CONTROL, ELEVATOR AND RUDDER, ASSEMBLY Spares for:-	6	—	B	DB3/9
3226	EEAS.130	END-FITTING, c/w ballrace	1	DTD.683	C	DB3/7
34377	EEAS.131/2	FORK-END	1	—	C	DB3/8
3585	E.A3.45.371	TUBE, CONTROL, BETWEEN FRAMES 12 and 15, ASSEMBLY Spares for:-	3	—	B	DB3/20
3226	EEAS.130	END-FITTING, c/w ballrace	1	DTD.683	C	DB3/7
34377	EEAS.131/2	FORK-END	1	—	C	DB3/8
3583	E.A3.45.355	TUBE, CONTROL, BETWEEN FRAMES 15 AND 20, ASSEMBLY Spares for:-	1	—	B	DB3/6
3226	EEAS.130	END-FITTING, c/w ballrace	1	DTD.683	C	DB3/7
34377	EEAS.131/2	FORK-END	1	—	C	DB3/8
3587	E.A3.45.367	TUBE, CONTROL, BETWEEN FRAME 20 AND AILERON LEVER, ASSEMBLY Spares for:-	1	—	B	DB3/14
1683	EEAS.47/2	FORK-END, adjusting	1	DTD.683	C	DB3/15
34377	EEAS.131/2	FORK-END Attaching parts for EEAS.131/2:-	1	—	C	DB3/16
1573	EEAS.37/13A	Nipple	6	—	C	DB/17
	EEAS.38/1A	Spoke (Make from AGS.935/A)	3	—	LM	DB3/19
28M/13879	A29/NP	NUT, 1/4" BSF	1	—	C	DB3/10
3582	E.A3.45.363	TUBE, CONTROL, AT FRAME 21, ASSEMBLY Spares for:-	1	—	B	DB3/10
34377	EEAS.131/2	FORK-END Attaching parts for EEAS.131/2:-	2	—	C	DB3/11
1573	EEAS.37/13A	Nipple	6	—	C	DB3/12
	EEAS.38/1A	Spoke (Make from AGS.935/A)	3	—	LM	DB3/13

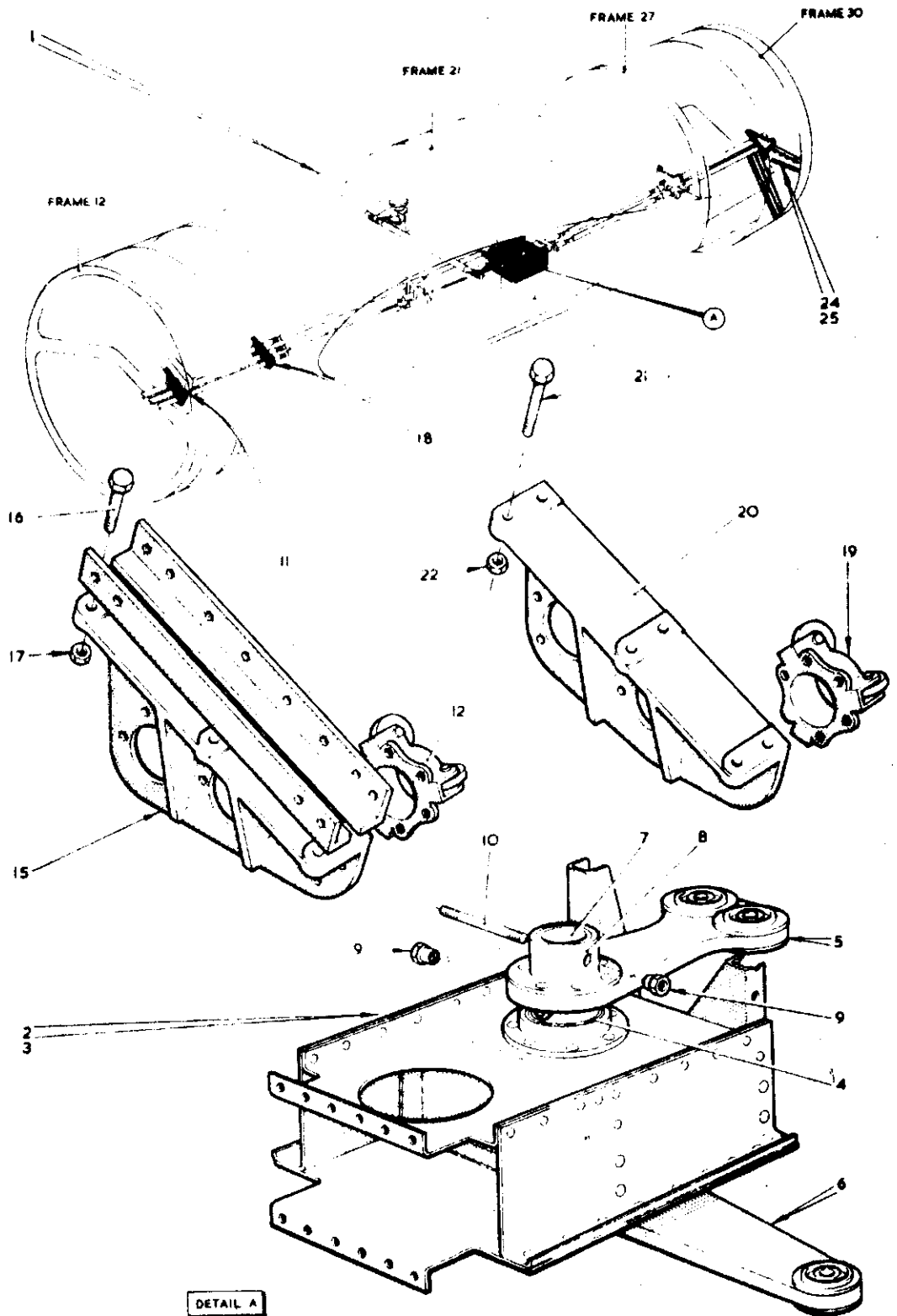


FIG.1 FLYING CONTROLS IN CENTRE FUSELAGE

CODE ABC

SECT 08

Ref. No.	Part No.	Description 1 2 3 4 5 6	No. off	Mtrl. Spec.	Cl. of	Plate
					Equip. M.R. L.M.	
3584	E.A3.45.375	TUBE, CONTROL, BETWEEN FRAMES 23 AND 27, ASSEMBLY Spares for:	2	-	B	DB3/21
3226	EEAS.130	END-FITTING, c/w ballrace	1	DTD.683	C	DB3/7
34377	EEAS.131/2	FORK-END Attaching parts for E.A3.45.359, E.A3.45.371, E.A3.45.355, E.A3.45.367, E.A3.45.363 and E.A3.45.375.	1	-	C	DB3/8
67	EEAS.13/1	Bolt, special	2	S.11	C	DB3/1
68	EEAS.14	Bush	2	S.11	C	DB3/2
3569	EEAS.63/E	Nut	2	S.96	C	DB3/3
3570	EEAS.127	Piece, distance	2	S.96	C	DB3/4
28P/9527619	SP90/C7	Pin, cutter, split	2	-	C	DB3/5

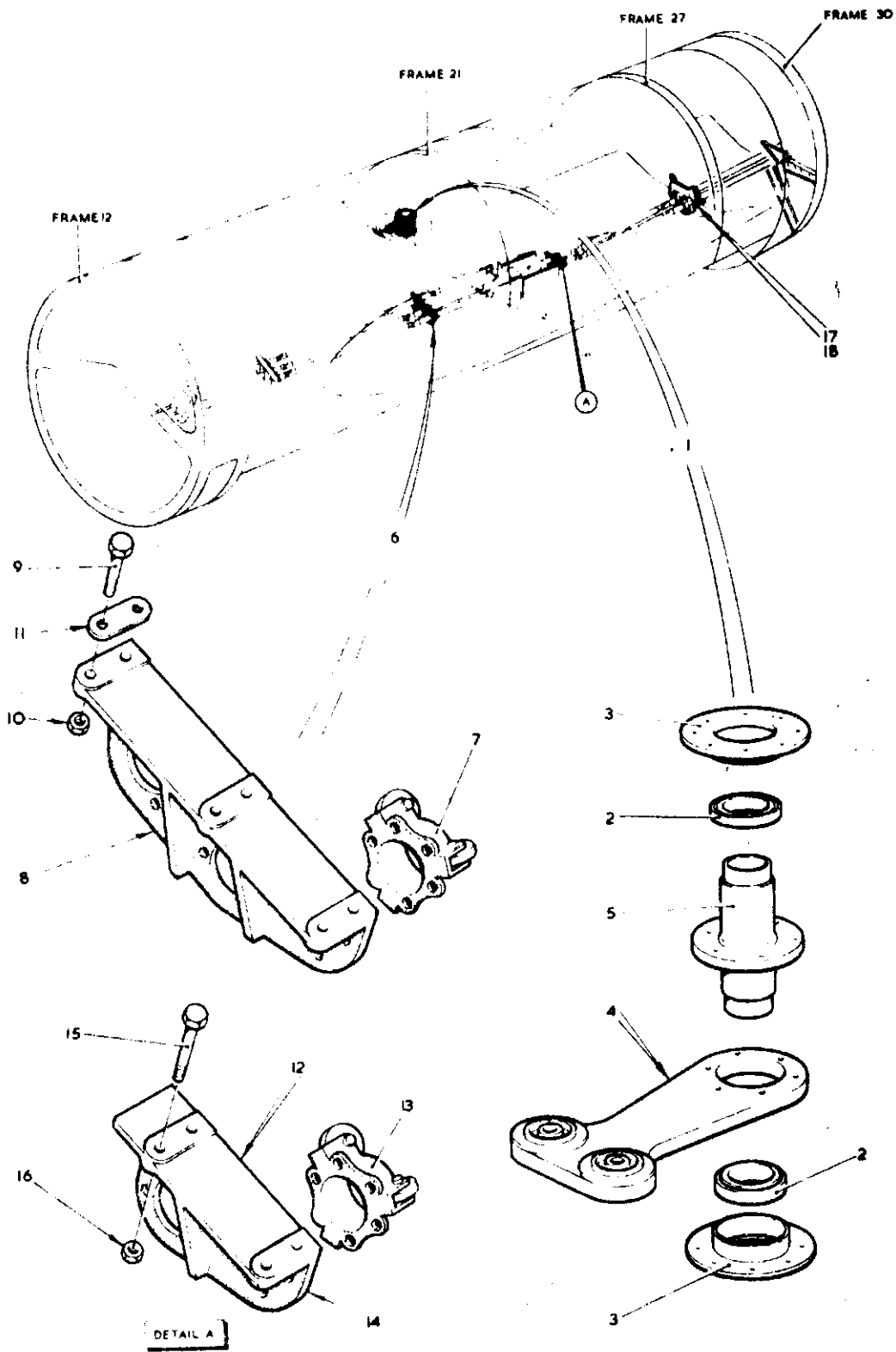


FIG.2 FLYING CONTROLS IN CENTRE FUSELAGE

CODE ABC

SECT DB

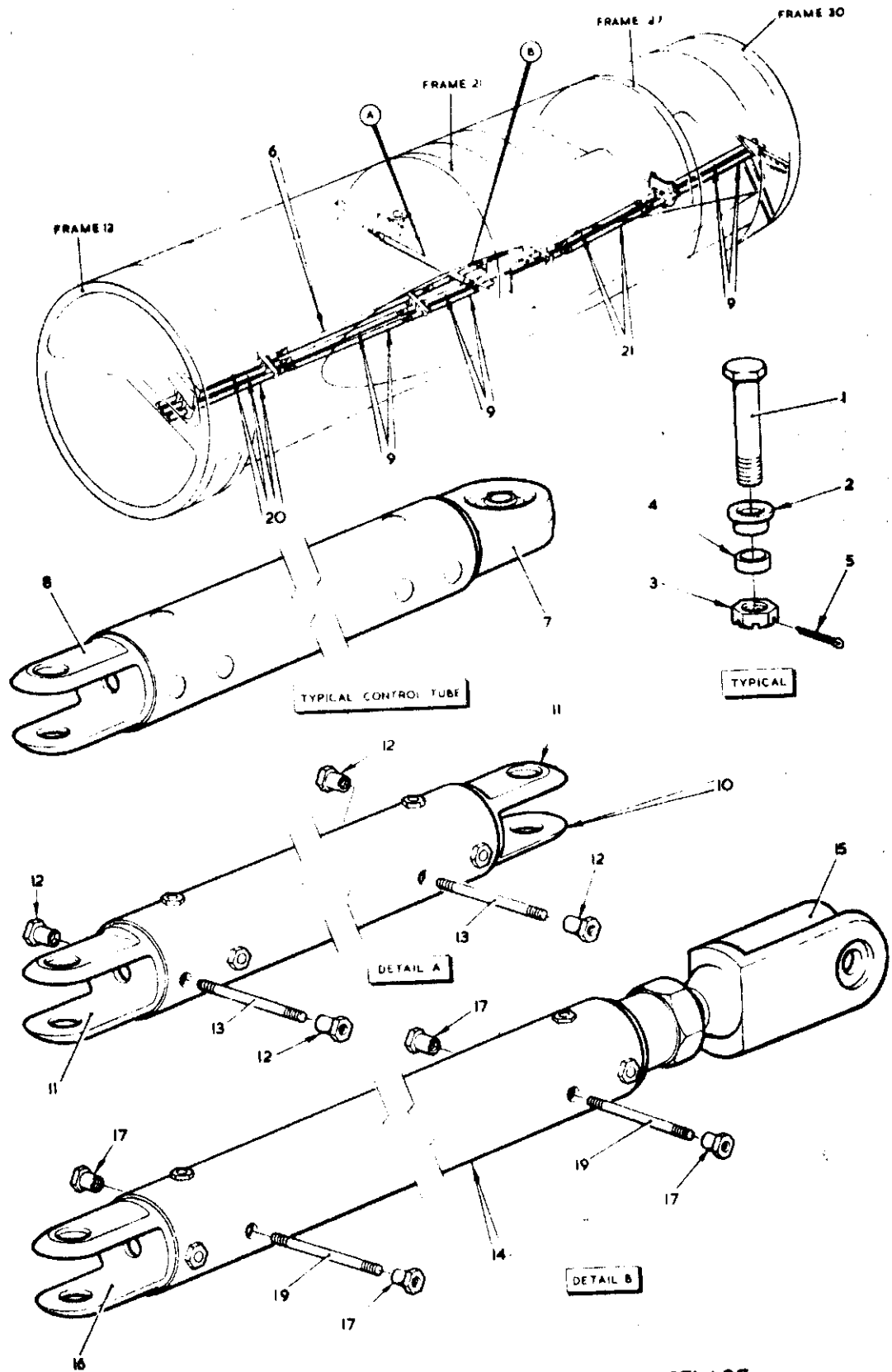


FIG. 3 FLYING CONTROLS IN CENTRE FUSELAGE

CODE ABC

SECT D8

CONTROLS
FLYING CONTROLS IN REAR FUSELAGE

Ref. No.	Part No.	Description 1 2 3 4 5 6	No. off	Matl. Spec.	Cl. of Equip.	Plate No.
					M.R. L.M.	
	E.C3.45.3	CONTROLS, FLYING IN REAR FUSELAGE, ASSEMBLY	-	-	-	
	E.C3.45.77	LEVERS, CONTROL AND MOUNTING OF BRACKETS AT FRAME 42, ASSEMBLY	1	-	-	
	E.C3.45.23	LEVER, CONTROL, ELEVATOR ASSEMBLY	1	-	-	DC1/1
2A/9500410	HOFFMANN CS.1	BEARING, ballrace	2	-	B	DC1/2
2A/9500463	SKEFKO CBA.2	BEARING, ballrace	3	-	B	DC1/3
	E.A1.45.573	BOBBIN	1	L.40	-	DC1/4
21671	E.A1.45.577	BUSH, distance	1	L.40	C	DC1/5
75	EEAS.3/D	HOUSING, ballrace	3	L.40	C	DC1/6
	E.C3.45.31	LEVER	1	-	-	DC1/7
	E.C3.45.25	LEVER, special	1	-	-	DC1/8
	E.C3.45.27	LEVER, special	1	-	-	DC1/9
		Attaching parts for E.C3.45.31, E.C3.45.25 and E.C3.45.27:				
28D/1011019	A25/8C	Bolt, 2 BA	4	-	C	DC1/10
28M/9403520	A27/CP	Nut, 2 BA	4	-	C	
28W/9419404	SP16/C	Washer	4	-	C	
92	EEAS.4/20C	WASHER, packing	6	L.72	C	DC1/11
		Attaching parts for E.C3.45.23:				
	E.C1.45.611	Spindle	1	-	-	DC1/12
28M/5808573	A27/CS	Nut, slotted, 2 BA	2	-	C	
28P/9486478	SP90/C5	Pin, cotter, split	2	-	C	
	AS28 1/6/040	Tube, distance	1	-	-	DC1/16
	E.C3.45.69	LEVER, CONTROL, RUDDER, ASSEMBLY	1	-	-	DC1/13
		Spares for:				
2A/9500410	HOFFMANN CS.1	BEARING, ballrace	2	-	B	DC1/14
34140	E.A1.45.575	BOBBIN	1	L.40	C	DC1/15
21671	E.A1.45.577	BUSH, distance	1	L.40	C	DC1/16
	E.C3.45.71	LUG, c/w ballraces	1	-	-	DC1/17
		Attaching parts for E.C3.45.69:				
2741	EEAS.13/7	Bolt, special	1	S.96	C	DC1/18
28M/7683	AGS.572/A	Nut, thin, slotted, 1/4" BSF	1	-	C	
28P/9527619	SP90/C7	Pin, cotter, split	1	-	C	
28W/9419405	SP15/E	Washer	1	-	C	
10994	E.A1.45.499	SUPPORT, CONTROL TUBES, AT FRAME 35, ASSEMBLY	1	-	B	DC1/19
		Spares for:				
	FAIREY AVIATION FS.515	BEARING, roller	2	-	B	DC1/20
2035	E.A1.45.501	SUPPORT, CONTROL TUBES, AT FRAME 37, ASSEMBLY	1	-	-	DC1/21
		Spares for:				
2035	FAIREY AVIATION FS.515	BEARING, roller	2	-	B	DC1/22

CONTROLS
FLYING CONTROLS IN REAR FUSELAGE

Ref. No.	Part No.	Description 1 2 3 4 5 6	No. off	Matl. Spec.	Cl. of	Plate No.
					Equip. M.R. L.M.	
2141	E A3.45.267	TUBE, CONTROL, ELEVATOR AND RUDDER, LETTERED "DO NOT HANDLE." ASSEMBLY Spares for	2	-	C	DC1/23
5058	E A3.45.297	TRANSFER, waterside	1	-	C	
3584	E A3.45.375	TUBE, control	1	-	C	DC1/24
3584	E.A3.45.375	TUBE, control, elevator and rudder	2	-	B	DC1/25
3588	E A3.45.317	TUBE, CONTROL, ELEVATOR, FROM CONTROL ARM TO ELEVATOR, ASSEMBLY Spares for	1	-	B	DC1/26
1683	EEAS.47/2	FORK-END, adjusting	1	DTD.683	C	DC1/27
	E.A3.45.313	FORK END	1	-	-	DC1/28
		Attaching parts for E.A3.45.313				
1573	EEAS.37/13A	Nipple	8	-	C	
	EEAS.38/1A	Spoke (Make from AGS 935/A)	4	-	L.M.	
28M/13879	A29/NP	NUT, 1/2" BSF	1	-	C	DC1/29
4620	E.A3.45.387	TUBE, CONTROL, ELEVATOR, ASSEMBLY Spares for	1	-	C	DC1/30
1683	EEAS.47/2	FORK-END, adjusting	1	DTD.683	C	DC1/31
34377	EEAS.131/2	FORK END	1	-	C	DC1/32
		Attaching parts for EEAS.131/2				
1573	EEAS.37/13A	Nipple	6	-	C	
	EEAS.38/1A	Spoke (Make from AGS 935/A)	3	-	L.M.	
28M/13879	A29/NP	NUT, 1/2" BSF	1	-	C	DC1/33
21073	E.A3.45.115	TUBE, CONTROL, RUDDER, FROM CONTROL ARM TO RUDDER, ASSEMBLY Spares for	1	-	B	DC1/34
1683	EEAS.47/2	FORK-END, adjusting	1	DTD.683	C	DC1/35
34377	EEAS.131/2	FORK-END	1	-	C	DC1/36
		Attaching parts for EEAS.131/2				
1573	EEAS.37/13A	Nipple	6	-	C	
	EEAS.38/1A	Spoke, (Make from AGS 935/A)	3	-	L.M.	
28M/13879	A29/NP	NUT 1/2" BSF	1	-	C	DC1/37
3589	E.A3.45.393	TUBE, CONTROL, RUDDER, FROM CONTROL ARM, ASSEMBLY Spares for	1	-	B	DC1/38
1683	EEAS.47/2	FORK-END	1	DTD.683	C	DC1/39
34377	EEAS.131/2	FORK END	1	-	C	DC1/40
		Attaching parts for EEAS.131/2				
1573	EEAS.13A	Nipple	6	-	C	
	EEAS.38/1A	Spoke (Make from AGS.935/A)	3	-	L.M.	
28M/13879	A29/NP	NUT, 1/2" BSF	1	-	C	DC1/41
		Attaching parts for E.A3.45.267, E.A3.45.375, E.A3.45.317, E.A3.45.387, E.A3.45.115 and E.A3.45.393				
67	EEAS.13/1	Bolt, specia	2	S.11	C	DC1/42
68	EEAS.14	Bush	2	S.11	C	DC1/43
3568	EEAS.63/E	Nut, special	2	S.96	C	DC1/44
3570	EEAS.127	Piece, distance	2	S.96	C	DC1/45
28P/9527619	SP90/C7	Pin, cotter, split	2	-	C	

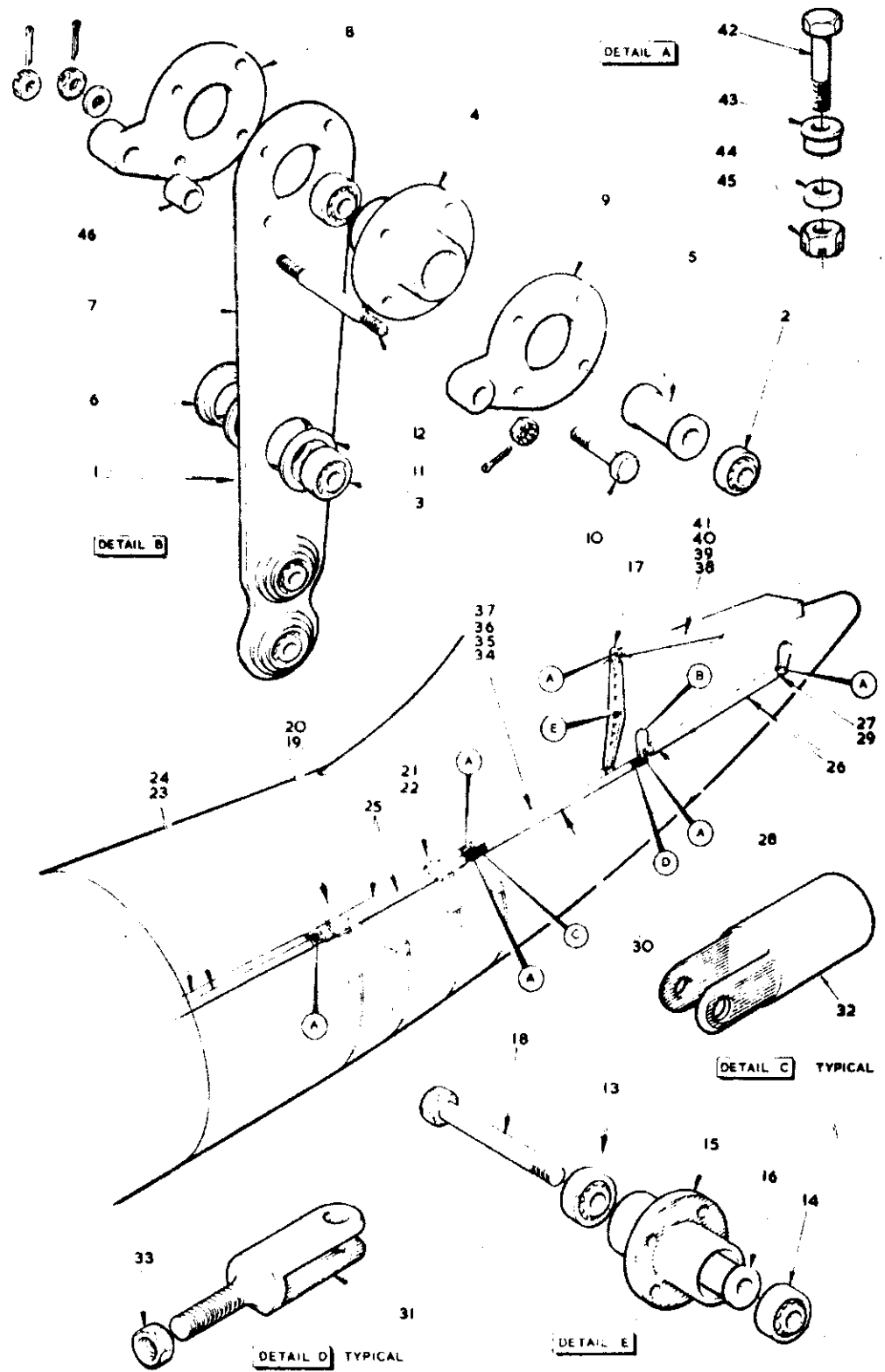


FIG 1 FLYING CONTROLS IN REAR FUSELAGE

CONTROLS
FLYING CONTROLS IN WING, PORT

Ref. No.	Part No.	Description 1 2 3 4 5 6	No. off	Matl. Spec.	Cl. of	Place No.
					Equip. M.R. L.M.	
	E.A1.45.13	CONTROLS, AILERON, IN WING, PORT, ASSEMBLY	-	-	-	
17811	E.A1.20.619	Consisting of:- ARMS, CENTRE LEVER, AILERON CONTROL, ASSEMBLY (Ref.Drg.E.A1.20.283)	1	-	MR	DD1/1
568	E.A1.20.621	Spares for ARM, CENTRE, LEVER, ASSEMBLY	2	-	B	DD1/2
569	E.A1.20.469	Consisting of:- ARM, lever	1	L.40	C	DD1/3
2A/9500463	SKEFKO CBA.2	BEARING, ballrace	1	-	B	DD1/4
75	EEAS.3/D	HOUSING, ballrace	1	L.40	C	DD1/5
92	EEAS 4/20C	WASHER, packing	2	DTD.390	C	DD1/6
6523	E.A3.45.449	Attaching parts for E.A1.20.621 Bolt, special	3	S.95	C	DD1/7
28M/5808573	A.27/CS	Nut, slotted, 2 BA	3	-	C	
28P/9527619	SP90/C7	Pin, cotter, split	3	-	C	
28W/9419402	SP13/C	Washer	3	-	C	
20746	E.A1.20.345	MOUNTING, C/W BOSS, ASSEMBLY	1	-	B	
2A/9500412	SKEFKO CBS.3	Spares for BEARING, ballrace	2	-	B	DD1/8
571	E.A1.20.579	BOSS, lever	1	L.40	C	DD1/9
572	E.A1.20.463	TUBE, distance	1	L.40	C	DD1/10
570	E.A1.20.467	Attaching parts for E.A1.20.619 Bolt, special	1	L.40	C	DD1/11
28M/13451	A.29/JS	Nut, slotted, 3/8" BSF	1	-	C	
28P/9527619	SP90/C7	Pin, cotter, split	1	-	C	
28W/9419477	SP15/J	Washer	1	-	C	
559	E.A1.20.633	BOSS AND LEVERS, AILERON CONTROL HINGE ON RIB 4, OUTER WING, ASSEMBLY (Ref.Drg. E.K2.20.1)	1	-	B	DD1/12
	E.A1.20.595	Spares for:- ARM, curved lever	1	-	-	
	E.A1.20.683	ARM, straight lever	1	-	-	
2A/9500412	SKEFKO CBS.3	BEARING, ballrace	2	-	B	
	E.A1.20.599	BUSH, distance	1	-	-	
553	E.A1.20.601	Attaching parts for E.A1.20.633: Bolt, special	1	-	C	
28M/13451	A29/JS	Nut, slotted, 3/8" BSF	1	-	C	
@2P/1007741	SP9/C8	Pin, cotter, split	1	-	C	
28W/9419477	SP15/J	Washer	1	-	C	
9321	E.A1.20.603	LEVER, AILERON CONTROL, ASSEMBLY (Ref.Drg. E.G4.20.15)	1	-	B/MR	DD1/13
619	E.A1.20.641	Spares for:- ARM, LEVER, C/W BOSS, ASSEMBLY	1	-	C	DD1/14
7218	E.A1.20.639	Spares for:- ARM, lever, c/w ballrace	1	-	C	DD1/15
28D/9133013	A25/6C	Attaching parts for E.A1.20.639:- Bolt, 2 BA	3	-	C	
28M/9403520	A27/CP	Nut, 2 BA	3	-	C	
28W/9419404	SP16/C	Washer	3	-	C	

CONTROLS
FLYING CONTROLS IN WING, PORT

Ref. No.	Part No.	Description	No. off	Matl. Spec.	Cl. of Equip.	Plate No.
					M.R. L.M.	
		1 2 3 4 5 6				
2A/9500412	SKEFKO CBS.3 E.A1.20.607	BEARING, ballrace BOSS, less ballrace	2 1	- L.40	B -	DD1/16
620	E.A1.20.609	Attaching parts for E.A1.20.641:	1	L.40	C	DD1/17
28M/6039	A.18/JS	Bolt, special	1	-	C	
78W/9419477	SP15/J	Nut, slotted, 3/8" BSF	1	-	C	
		Washer	1	-	C	
3571	E.A3.45.321	TUBE, CONTROL, FROM HINGE MOUNTING ON RIB 4, OUTER WING TOAILERON OPERATING LEVER, ASSEMBLY	1	-	B	DD1/18
		Spares for				
494	E.A1.45.201	FORK-END	1	-	C	DD1/19
28M/9452621	A27/NT	NUT, thin, 1/2" BSF	1	-	C	DD1/20
3572	E.A3.45.397	TUBE, CONTROL, BETWEEN FUSELAGE AND OPERATING LEVER AT RIB 4, CENTRE WING, ASSEMBLY	1	-	B	DD1/21
		Spares for				
1683	EEAS.47/2	FORK-END, adjusting	1	-	C	
34377	EEAS.131/2	FORK-END	1	-	C	
		Attaching parts for EEAS.131/2:-				
1573	EEAS.37/13A	Nipple	6	-	C	
	EEAS.38/1A	Spoke (Make from Ref. 28R/6123)	3	S.96	L.M.	
28M/13879	A29/NP	NUT, 1/2" BSF	1	-	C	
3573	E.A3.45.401	TUBE, CONTROL, BETWEEN OPERATING LEVER ON RIB 4, AND CENTRE LEVER, CENTRE WING, ASSEMBLY	1	-	B	DD1/22
		Spares for				
34377	EEAS.131/2	FORK-END	2	-	C	
		Attaching parts for EEAS.131/2				
1573	EEAS.37/13A	Nipple	6	-	C	
	EEAS.38/1A	Spoke (Make from Ref. 28R/6123)	3	-	L.M.	
3574	E.A3.45.405	TUBE, CONTROL, FROM CENTRE LEVER TO LEVER BETWEEN RIBS 2 & 2B, OUTER WING, ASSEMBLY	1	-	B	DD1/23
		Spares for				
34377	EEAS.131/2	FORK-END	2	-	C	
		Attaching parts for EEAS.131/2				
1573	EEAS.37/13A	Nipple	6	-	C	
	EEAS.38/1A	Spoke (Make from Ref. 28R/6123)	3	-	L.M.	
3576	E.A3.45.409	TUBE, CONTROL, FROM LEVER BETWEEN RIBS 2 & 2B TO RIB 4, OUTER WING ASSEMBLY	1	-	B	DD1/24
		Spares for				
34377	EEAS.131/2	FORK-END	2	-	C	
		Attaching parts for EEAS.131/2:-				
1573	EEAS.37/13A	Nipple	6	-	C	
	EEAS.38/1A	Spoke (Make from Ref. 28R/6123)	3	-	L.M.	

CONTROLS
FLYING CONTROLS IN WING, PORT

Ref. No.	Part No.	Description 1 2 3 4 5 6	No. off	Mati. Spec.	Cl. of	Plate
					Equip.	
					M.R.	
					L.M.	
		Attaching parts for E.A3.45.321, E.A3.45.397, E.A3.45.401, E.A3.45.405, and E.A3.45.409:-				
67	EEAS.13/1	. Bolt, special	2	—	C	DD1/25
68	EEAS.14	. Bush, bearing	2	—	C	DD1/26
3569	EEAS.63/E	. Nut, special	2	—	C	DD1/27
3570	EEAS.127	. Piece, distance	2	—	C	DD1/28
28P/9527619	SP90/C7	. Pin, cotter, split	2	—	C	

A B C D

CONTROLS
FLYING CONTROLS IN WING, STARBOARD

Ref. No.	Part No.	Description	No. off	Matl. Spec.	Cl. of Equip.	Plate No.
					M.R. L.M.	
	E.A1.45.14	CONTROLS, AILERON IN WING, STARBOARD, ASSEMBLY	-	-	-	
17812	E.A1.20.620	Consisting of:- ARMS, CENTRE LEVER, AILERON CONTROL, ASSEMBLY (Ref.Drg. E.A1.20.264)	1	-	MR	DE1/1
568	E.A1.20.621	Spares for:- ARM, CENTRE, LEVER ASSEMBLY	2	-	B	DE1/2
569	E.A1.20.469	Consisting of:- ARM, lever	1	L.40	C	DE1/3
2A/9500463	SKEFKO CBA.2	BEARING, ballrace	1	-	B	DE1/4
75	EEAS.3/D	HOUSING, ballrace	1	L.40	C	DE1/5
92	EEAS.4/20C	WASHER, packing	2	L.72	C	DE1/6
8523	E.A3.45.449	Attaching parts for E.A1.20.621:- Bolt, special	3	S.96	C	DE1/7
28M/5808573	A27/CS	Nut, slotted, 2 BA	3	-	C	
28P/9527619	SP90/C7	Pin, cotter, split	3	-	C	
28W/9419402	SP13/C	Washer	3	-	C	
20747	E.A1.20.346	MOUNTING, C/W BOSS, ASSEMBLY	1	-	B	
2A/9500412	SKEFKO CBS.3	Spares for:- BEARING, ballrace	2	-	B	DE1/8
571	E.A1.20.579	BOSS, lever	1	L.40	C	DE1/9
572	E.A1.20.463	TUBE, distance	1	L.40	C	DE1/10
570	E.A1.20.467	Attaching parts for E.A1.20.620:- Bolt, special	1	L.40	C	DE1/11
28M/13451	A29/JS	Nut, slotted, 3/8" BSF	1	-	C	
28P/9527619	SP90/C7	Pin, cotter, split	1	-	C	
28W/9419477	SP15/J	Washer	1	-	C	
560	E.A1.20.634	BOSS AND LEVERS, AILERON CONTROL HINGE ON RIB 4 OUTER WING, ASSEMBLY (Ref.Drg. E.K2.20.2)	1	-	B	DE1/12
	E.A1.20.596	Spares for:- ARM, curved lever	1	-	-	
	E.A1.20.623	ARM, straight lever	1	-	-	
2A/9500412	SKEFKO CBS.3	BEARING, ballrace	2	-	B	
	E.A1.20.599	BUSH, distance	1	-	-	
553	E.A1.20.601	Attaching parts for E.A1.20.634 Bolt, special	1	-	C	
28M/13451	A29/JS	Nut, slotted, 3/8" BSF	1	-	C	
28P/1007741	SP/9/C8	Pin, cotter, split	1	-	C	
28W/9419477	SP15/J	Washer	1	-	C	
9322	E.A1.20.604	LEVER, AILERON CONTROL, ASSEMBLY (Ref. Drg. E G4.20.16)	1	-	B/MR	DE1/13
619	E.A1.20.641	Spares for:- ARM, LEVER, C/W BOSS, ASSEMBLY	1	-	C	DE1/14
7218	E.A1.20.639	ARM, lever, C/W ballrace	1	-	C	DE1/15
7218	E.A1.20.639	ARM, lever, C/W ballrace	2	-	C	DE1/16
28D/9133013	A25/5C	Attaching parts for E.A1.20.639:- Bolt, 2 BA	3	-	C	
28M/9403520	A27/CP	Nut, 2 BA	3	-	C	
28W/9419404	SP16/C	Washer	3	-	C	

CONTROLS
FLYING CONTROLS IN WING, STARBOARD

Ref. No.	Part No.	Description	No. off	Matl. Spec.	Cl. of Equip.	Plate No.
					M.R. L.M.	
		1 2 3 4 5 6				
2A/9500412	SKEFKO CBS.3 E.A1.20.607	BEARING, ballrace	2	-	B	DE1/16
		BOSS, less ballrace	1	L.40	-	
		Attaching parts for E.A1.20.641:-				
620	E.A1.20.609	Bolt, special	1	L.40	C	DE1/17
28M/6039	A18/JS	Nut, slotted, 3/8" BSF	1	-	C	
28W/9419477	SP16/J	Washer	1	-	C	
3571	E.A3.45.321	TUBE, CONTROL, FROM HINGE MOUNTING ON RIB 4, OUTER WING TO AILERON OPERATING LEVER, ASSEMBLY	1	-	B	DE1/18
		Spares for:-				
494	E.A1.45.201	FORK-END	1	-	C	DE1/19
28M/9462621	A27/N1	NUT, thin, 1/2" BSF	1	-	C	DE1/20
3572	E.A3.45.397	TUBE, CONTROL, BETWEEN FUSELAGE AND OPERATING LEVER AT RIB 4, CENTRE WING, ASSEMBLY	1	-	B	DE1/21
		Spares for:-				
1683	EEAS.47/2	FORK-END, adjusting	1	-	C	
34377	EEAS.131/2	FORK-END	1	-	C	
		Attaching parts for EEAS.131/2:-				
1573	EEAS.37/13A	Nipple	6	-	C	
	EEAS.38/1A	Spoke (Make from Ref. 28R/6123)	3	S.96	L.M	
28M/13879	A29/NP	NUT, 1/2" BSF	1	-	C	
3573	E.A3.45.401	TUBE, CONTROL, BETWEEN OPERATING LEVER ON RIB 4 AND CENTRE LEVER, CENTRE WING, ASSEMBLY	1	-	B	DE1/22
		Spares for:-				
34377	EEAS.131/2	FORK-END	2	-	C	
		Attaching parts for EEAS.131/2:-				
1573	EEAS.37/13A	Nipple	6	-	C	
	EEAS.38/1A	Spoke (Make from Ref. 28R/6123)	3	S.96	L.M	
3574	E.A3.45.405	TUBE, CONTROL, FROM CENTRE LEVER TO LEVER BETWEEN RIBS 2 & 2B, OUTER WING, ASSEMBLY	1	-	B	DE1/23
		Spares for:-				
34377	EEAS.131/2	FORK-END	2	-	C	
		Attaching parts for EEAS.131/2:-				
1573	EEAS.37/13A	Nipple	6	-	C	
	EEAS.38/1A	Spoke (Make from Ref. 28R/6123)	3	S.96	L.M	
3575	E.A3.45.410	TUBE, CONTROL, FROM LEVER BETWEEN RIBS 2 & 2B to RIB 4, OUTER WING, ASSEMBLY	1	-	B	DE1/24
		Spares for:-				
34377	EEAS.131/2	FORK-END	2	-	C	
		Attaching parts for EEAS.131/2:-				
1573	EEAS.37/13A	Nipple	6	-	C	
	EEAS.38/1A	Spoke (Make from Ref. 28R/6123)	3	S.96	L.M	

CONTROLS
FLYING CONTROLS IN WING, STARBOARD

Ref. No.	Part No.	Description	No. off	Matl. Spec.	Cl. of	Plate
					Equip.	
		1 2 3 4 5 6			M.R.	
					L.M.	
		Attaching parts for E.A3.45.321, E.A3.45.397, E.A3.45.401, E.A3.45.405 and E.A3.45.410.-				
67	EEAS.13/1	. Bolt, special	2	-	C	DE1/25
68	EEAS.14	. Bush, bearing	2	-	C	DE1/26
3569	EEAS.63/E	. Nut, special	2	-	C	DE1/27
3570	EEAS.127	Piece, distance	2	-	C	DE1/28
28P/9527619	SP90/C7	. Pin, cotter, split	2	-	C	

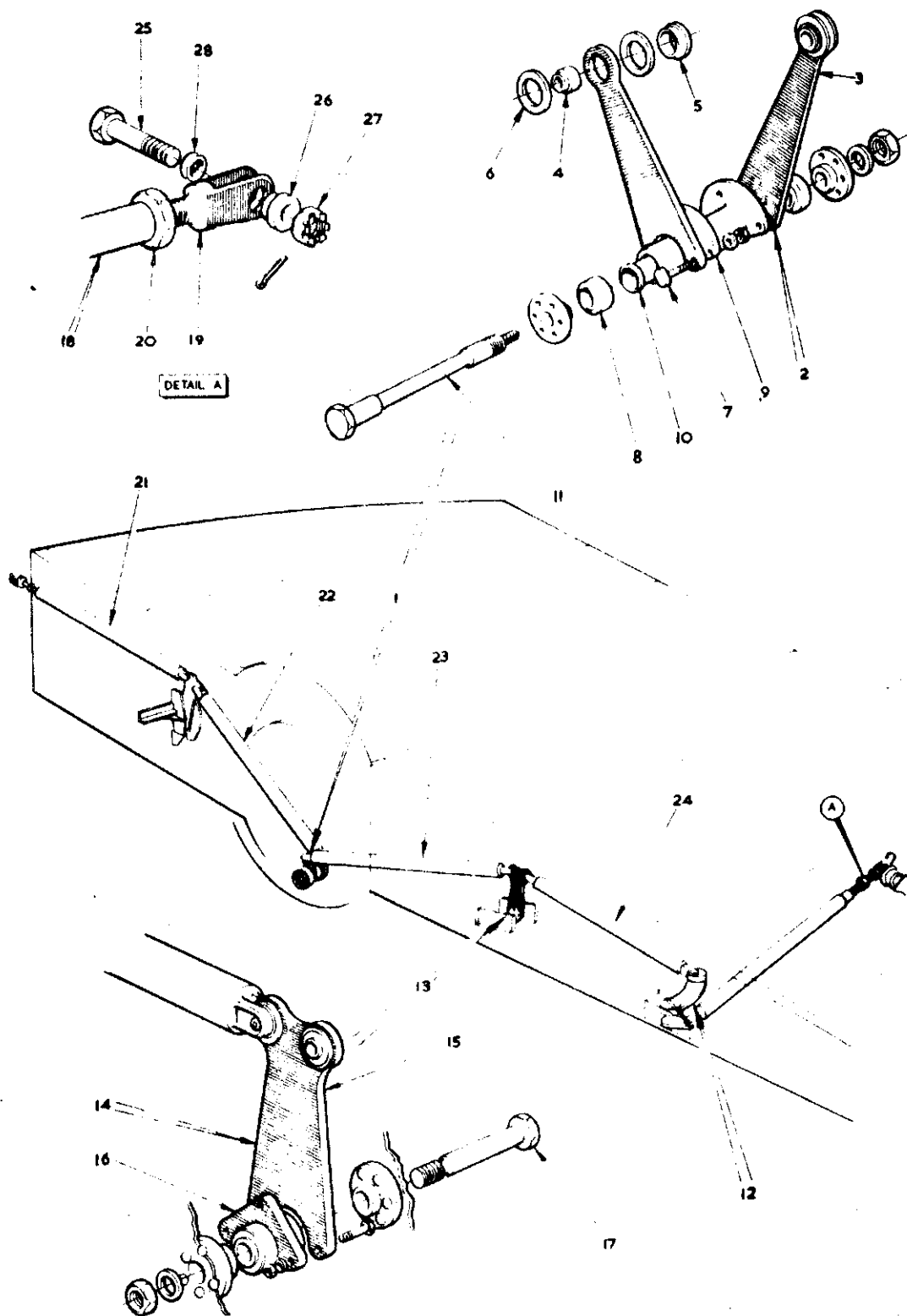


FIG.1 AILERON CONTROLS IN WING

CODE A,B,C,D

SECT DD/DE

CONTROLS
FLAP OPERATING MECHANISM, PORT

Ref. No.	Part No.	Description	No. off	Mati. Spec.	Cl. of Equip.	Plate No.
					M.R. L.M.	
	E.A1.20.701	FLAP OPERATING MECHANISM, PORT, ASSEMBLY	-	-	-	DF1/17
495	E.A1.20.711	Spares for:- BRACKET, flap operating, jack unit support	2	L.65	C	DF1/25
28D/1011259	A25/10G	Attaching parts for E.A1.20.711:- Bolt, 5/16" BSF	2	-	C	DF1/20
28D/9419476	SP15/G	Washer	2	-	C	DF1/19
496	E.A1.20.885	BRACKET, mounting, flap operating jack unit	4	DTD.683		DF1/23
28D/1011258	A25/8G	Attaching parts for E.A1.20.885:- Bolt, 5/16" BSF	1	-	C	DF1/24
6490	E.A1.20.3129	BRACKET, mounting, Densynn transmitter	1	L.72	C	DF1/17
28D/1010658	A25/1B	Attaching parts for E.A1.20.3129:- Bolt, 4 BA	6	-	C	DF2/15
5K/2994	AS.1900/B	CLIP, cable	1	-	C	
2036	E.A3.20.1011	LINK, CONNECTING, FLAP TO OPERATING MECHANISM, ASSEMBLY	4	-	B	DF1/1
500	E.A1.20.797	Spares for:- PLATE, locking	1	L.72	C	DF1/10
28D/1010142	A25/9B	Attaching parts for E.A1.20.797 Bolt, 4 BA	2	-	C	DF1/9
28M/1278189	AGS.2001/B/1	Nut, stiff, 4 BA	2	-	C	DF1/8
28W/9419474	SP15/B	Washer	2	-	C	DF1/7
501	E.A1.20.795	SCREW, adjusting	1	S.11	C	DF1/6
502	E.A1.20.791	WASHER	2	L.65 or L.72	C	DF1/11
504	E.A1.20.683	PLATE, cover, at rib 3A, for assembly of flap jack unit (Pre-mod.738)	1	DTD.320	C	
5849	E.A3.20.2289	PLATE, cover at rib 3A, for assembly of flap jack unit (Mod.738)	1	L.72	C	DF2/22
28D/1212939	AG1/1C	Attaching parts for E.A1.20.683 or E.A3.20.2289:- Bolt, 2 BA	6	-	C	DF2/20
28M/10281	AGS.2001/C/3	Nut, stiff, 2 BA	6	-	C	DF2/23
28W/9419475	SP15/C	Washer	6	-	C	DF2/21
3499	E.A1.20.10777	PLATE, cover at rib 3A, for assembly of flap jack unit				
28D/1212939	AG1/1C	Attaching parts for E.A1.20.10777 Bolt, 2 BA	6	-	C	DF2/7
28M/10281	AGS.2001/C/3	Nut, stiff, 2 BA	6	-	C	DF2/9
28W/9419475	SP15/C	Washer	6	-	C	DF2/8
3500	E.A1.20.10778	PLATE, cover at rib 3A for assembly of flap jack unit	1	L.72	C	DF2/31
28D/1212939	AG1/1C	Attaching parts for E.A1.20.10778:- Bolt, 2 BA	6	-	C	DF2/29
28M/10281	AGS.2001/C/3	Nut, stiff, 2 BA	6	-	C	DF2/32
28W/9419475	SP15/C	Washer	6	-	C	DF2/30

CONTROLS
FLAP OPERATING MECHANISM, PORT

Ref. No.	Part No.	Description 1 2 3 4 5 6	No. off	Matl. Spec.	Cl. of	Plate
					Equip. M.R. L.M.	
3497	E.A1.20.10779	PLATE, cover at ribs 3, 4 & 5, for assembly of flap jack unit	2	L.72	C	DF1/5
28D/1212939	A61/1C	Attaching parts for E.A1.20.10779:-	7	-	C	DF1/2
28M/10281	AGS.2001/C/3	Bolt, 2 BA	7	-	C	DF1/4
28W/9419475	SP15/C	Nut, stiff, 2 BA Washer	7	-	C	DF1/3
3498	E.A1.20.10780	PLATE, cover at ribs 3, 4 & 5, for assembly of flap jack unit	1	L.72	C	DF1/18
28D/1212939	A61/1C	Attaching parts for E.A1.20.10780:-	7	-	C	DF1/14
28M/10281	AGS.2001/C/3	Bolt, 2 BA	7	-	C	DF1/18
28W/9419475	SP15/C	Nut, stiff, 2 BA Washer	7	-	C	DF1/15
9888	E.A1.20.813 ✓	ROD, PUSH, OUTBOARD FLAP CONTROL, BETWEEN HINGE AND OPERATING JACK, ASSEMBLY Spares for:-	1	-	B	DF2/28
507	E.A1.20.839	BUSH	1	DTD.197	C	DF2/25
6920	E.A1.20.827	EYE-END	1	L.65	C	DF2/24
508	E.A1.20.825	FORK-END	1	L.65	C	DF2/38
		Attaching parts for E.A1.20.827 and E.A1.20.825:-				
1096	EEAS.37/15A	Nipple	6	S.96	C	DF2/35
	EEAS.38/2A	Spoke (Make from AGS.935/8)	3	S.96	L.M	DF2/34
28M/9156370	SP.21	NIPPLE, lubricating	1	-	C	DF2/39
509	E.A1.20.805	PIN, special	1	S.11	C	DF2/37
510	E.A1.20.807	PLATE, locking	1	L.72	C	DF2/33
549	EEAS.5	WASHER, red fibre, for lubricating nipple	1	BSS.216	C	DF2/38
		Attaching parts for E.A1.20.813:-				
503	E.A1.20.803	Pin, special	1	S.11	C	DF2/27
28P/19176	SP90/G6	Pin, cotter, split	2	-	C	DF2/26
9889	E.A1.20.815 ✓	ROD, PUSH, INBOARD AND OUTBOARD FLAP CONTROL, BETWEEN HINGE & OPERATING JACK, ASSEMBLY Spares for:-	2	-	C	DF1/12
507	E.A1.20.839	BUSH	1	DTD.197	C	
6920	E.A1.20.827	EYE-END	1	L.65	C	
508	E.A1.20.825	FORK-END	1	L.65	C	
		Attaching parts for E.A1.20.827 and E.A1.20.825:-				
1096	EEAS.37/15A	Nipple	6	S.96	C	
	EEAS.38/2A	Spoke (Make from AGS.935/8)	3	S.96	L.M	
28N/9156370	SP21	NIPPLE, lubricating	1	-	C	
509	E.A1.20.805	PIN, special	1	S.11	C	
510	E.A1.20.807	PLATE, locking	1	L.72	C	
549	EEAS.5	WASHER, red fibre, for lubricating nipple	1	BSS.216	C	
		Attaching parts for E.A1.20.815:-				
503	E.A1.20.803	Pin, special	1	S.11	C	DF1/22
28P/19176	SP90/G.6	Pin, cotter, split	2	-	C	DF1/21

CONTROLS
FLAP OPERATING MECHANISM, PORT

Ref. No.	Part No.	Description 1 2 3 4 5 6	No. off	Matl. Spec.	Cl. of	Flets No.
					Equip. M.R. L.M.	
9891	E.A1.20.819	ROD, PUSH, INBOARD FLAP CONTROL BETWEEN HINGE AND OPERATING JACK CONNECTING ARM, ASSEMBLY Spares for:-	1	-	B	DF1/13
507	E.A1.20.839	BUSH	1	DTD.197	C	
8920	E.A1.20.827	EYE-END	1	L.65	C	
508	E.A1.20.825	FORK-END Attaching parts for E.A1.20.827 and E.A1.20.825:-	1	L.65	C	
1096	EEAS.37/15A	Nipple	6	S.96	C	
	EEAS.38/2A	Spoke (Make from AGS.935/B)	3	S.96	L.M.	
28N/9156370	8P21	NIPPLE, lubricating	1	-	C	
509	E.A1.20.805	PIN, special	1	S.11	C	
510	E.A1.20.807	PLATE, locking	1	L.72	C	
549	EEAS.5	WASHER, red fibre, for lubricating nipple Attaching parts for E.A1.20.815:-	1	BSS.216	C	
503	E.A1.20.803	PIN, special	1	S.11	C	DF1/22
28P/19176	SP90/G6	PIN, cotter, split	1	-	C	DF1/21
6491	E.A1.20.3133	ROD, CONNECTING, FLAP INDICATOR MECHANISM, ASSEMBLY Consisting of:-	1	-	B	DF2/1
28N/1045680	AGS.899/2	COLLAR	2	-	C	DF2/4
7095	E.A1.20.881	FORK-END	1	L.1	C	DF2/3
	E.A1.20.883	FORK-END, L.H. thread	1	L.1	-	DF2/11
28M/1006473	A27/CT	NUT, thin, 2 BA	1	-	C	DF2/2
28M/13253	A27/CTL	NUT, thin, 2 BA	1	-	C	DF2/12
28P/830	SP/4/Y/B4	PIN, shackle	2	-	C	DF2/8
28P/9527819	SP90/C7	PIN, cotter, split	2	-	C	DF2/5
7094	E.A1.20.3157	ROD, screwed	1	DTD.683	C	DF2/10
6A/2134	-	TRANSMITTER, Desynn Attaching parts for 6A/2134	1	-	A	DF2/14
28D/1212940	A61/2C	Bolt, 2 BA	4	-	C	DF2/16
28M/10281	AGS.2001/C/3	Nut, stiff, 2 BA	4	-	C	DF2/19
28W/9419475	SP15/C	Washer	4	-	C	DF2/18

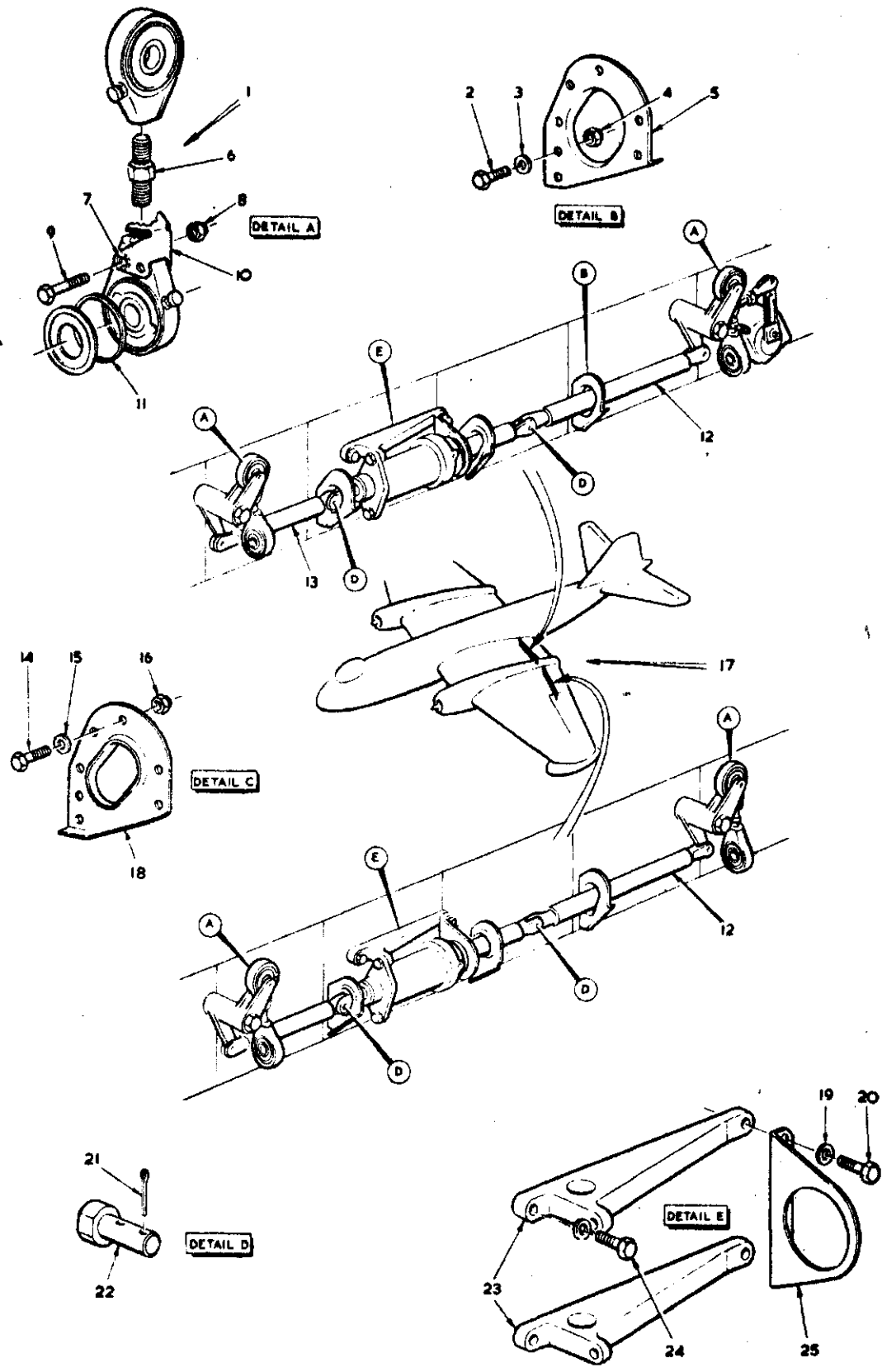


FIG.1 FLAP OPERATING MECHANISM PORT

A, B, C, D.

SECT DF

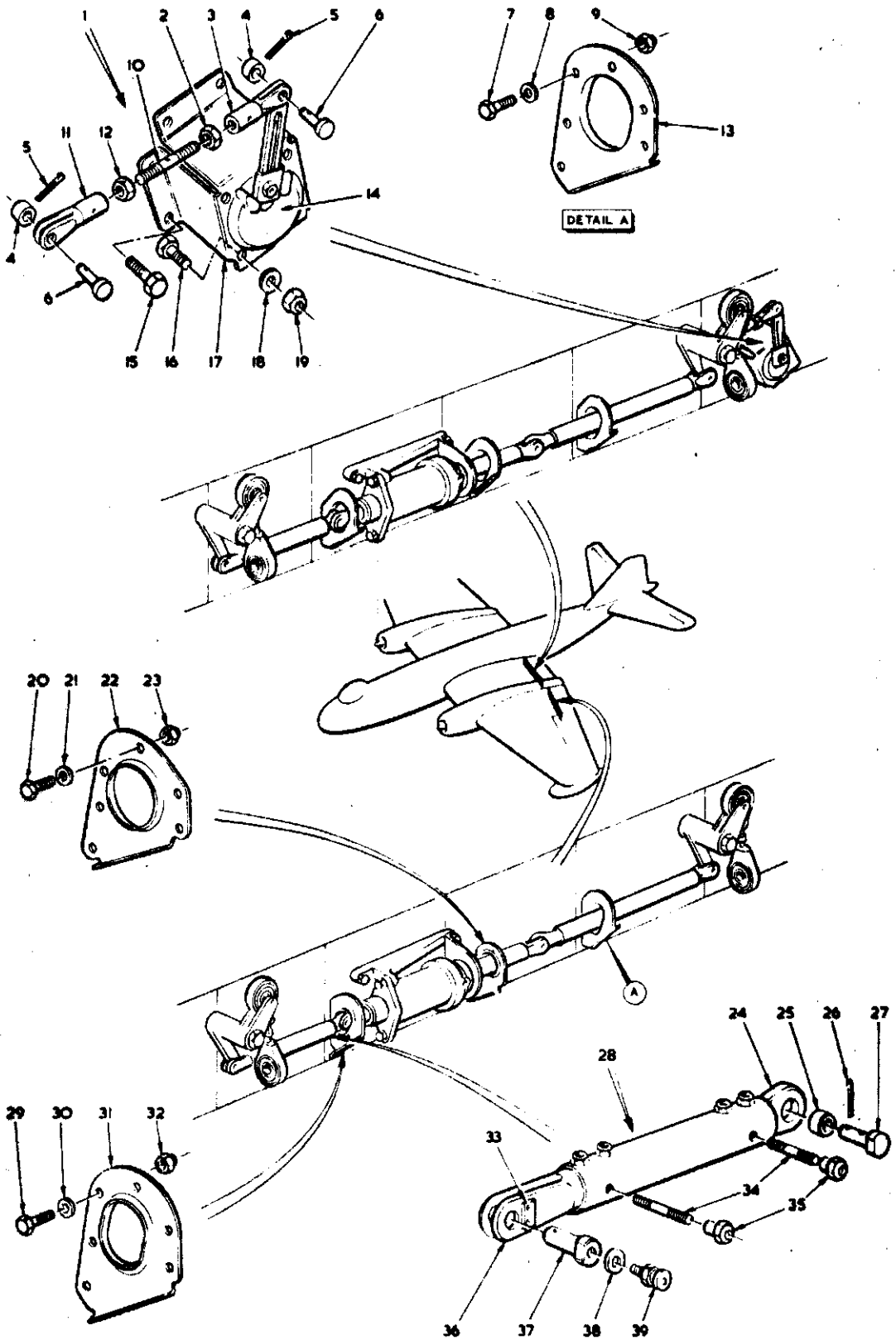


FIG. 2 FLAP OPERATING MECHANISM PORT

A,B,C,D.

RECT DF

CONTROLS
FLAP OPERATING MECHANISM, STARBOARD

Ref. No.	Part No.	Description	No. off	Mtrl. Spec.	Cl. of Equip.	Plate No.
					M.R. L.M.	
	E.A1.20.700	FLAP OPERATING MECHANISM, STARBOARD ASSEMBLY	-	-	-	DG1/18
		Spares for:-				
495	E.A1.20.711	BRACKET, flap operating jack unit support	2	L.65	C	DG1/20
		Attaching parts for E.A1.20.711:-				
28D/1011259	A25/10G	Bolt, 5/16" BSF	2	-	C	DG1/22
28W/9419476	SP15/G	Washer	2	-	C	DG1/21
496	E.A1.20.885	BRACKET, mounting, flap operating jack unit	2	DTD.683	C	DG1/26
		Attaching parts for E.A1.20.885:-				
28D/1011258	A25/8G	Bolt, 5/16" BSF	1	-	C	DG1/26
511	E.A1.20.887	BRACKET, mounting, flap operating jack unit, centre wing	2	DTD.683	C	DG1/23
		Attaching parts for E.A1.20.887:-				
28D/1011258	A25/8G	Bolt, 5/16" BSF	1	-	C	DG1/24
2036	E.A3.20.1011	LINK, CONNECTING, FLAP TO OPERATING MECHANISM, ASSEMBLY	4	-	B	DG1/1
		Spares for:-				
500	E.A1.20.797	PLATE, locking	1	L.72	C	DG1/7
		Attaching parts for E.A1.20.797:-				
28D/1010142	A25/9B	Bolt, 4 BA	2	-	C	DG1/9
28M/1278189	AGS.2001/B/1	Nut, stiff, 4 BA	2	-	C	DG1/10
28W/9419474	SP15/B	Washer	2	-	C	DG1/8
501	E.A1.20.795	SCREW, adjusting	1	S.11	C	DG1/3
502	E.A1.20.791	WASHER special	2	L.65 or L.72	C	DG1/11
504	E.A1.20.683	PLATE, cover at rib 3A, for assembly of flap jack unit (Pre-Mod.738)	1	L.72	C	
5849	E.A3.20.2289	PLATE, cover at rib 3A, for assembly of flap jack unit (Mod.738)	1	L.72	C	DG2/25
		Attaching parts for E.A1.20.683 or E.A3.20.2289:-				
28D/1212939	A81/1C	Bolt, 2 BA	6	-	C	DG2/23
28M/10281	AGS.2001/C/3	Nut, stiff, 2 BA	6	-	C	DG2/26
28W/9419475	SP15/C	Washer	6	-	C	DG2/24
3499	E.A1.20.10777	PLATE, cover at rib 3A, for assembly of flap jack unit	1	L.72	C	DG2/28
		Attaching parts for E.A1.20.10777:-				
28D/1212939	A81/1C	Bolt, 2 BA	6	-	C	DG2/20
28M/10281	AGS.2001/C/3	Nut, stiff, 2 BA	6	-	C	DG2/22
28W/9419475	SP15/C	Washer	6	-	C	DG2/21
3500	E.A1.20.10778	PLATE, cover at rib 3A, for assembly of flap jack unit	1	L.72	C	DG2/18
		Attaching parts for E.A1.20.10778:-				
28D/1212939	A81/1C	Bolt, 2 BA	6	-	C	DG2/16
28M/10281	AGS.2001/C/3	Nut, stiff, 2 BA	6	-	C	DG2/19
28W/9419475	SP15/C	Washer	6	-	C	DG2/17

CONTROLS
FLAP OPERATING MECHANISM, STARBOARD

Ref. No.	Part No.	Description 1 2 3 4 5 6	No. off	Matl. Spec.	Cl. of	Plate
					Equip. M.R. L.M.	
3497	E.A1.20.10779	. PLATE, cover at ribs 3, 4 and 5, for assembly of flap jack unit	2	L.72	C	DG1/2
28D/1212939	A81/1C	. Attaching parts for E.A1.20.10779:-	7	-	C	DG1/4
28M/10281	AGS.2001/C/3	. Bolt, 2 BA	7	-	C	DG1/8
28W/9419475	SP15/C	. Nut, stiff, 2 BA	7	-	C	DG1/8
		. Washer	7	-	C	DG1/8
3498	E.A1.20.10780	. PLATE, cover at ribs 3, 4 and 5, for assembly of flap jack unit	1	L.72	C	DG1/19
28D/1212939	A81/1C	. Attaching parts for E.A1.20.10780:-	7	-	C	DG1/14
28M/10281	AGS.2001/C/3	. Bolt, 2 BA	7	-	C	DG1/18
28W/9419475	SP15/C	. Nut, stiff, 2 BA	7	-	C	DG1/18
		. Washer	7	-	C	DG1/18
9890	E.A1.20.817	. ROD, PUSH, OUTBOARD FLAP CONTROL BETWEEN FLAP HINGE AND OPERATING JACK, ASSEMBLY Spares for:-	1	-	B	DG2/1
507	E.A1.20.839	. BUSH	1	DTD.197	C	DG2/4
6920	E.A1.20.827	. EYE-END	1	L.65	C	DG2/2
508	E.A1.20.825	. FORK-END	1	L.65	C	DG2/10
		. Attaching parts for E.A1.20.827 and E.A1.20.825:-				
1096	EEAS.37/15A	. Nipple	6	S.96	C	DG2/8
	EEAS.38/2A	. Spoke, (Make from AGS.935/B)	3	S.96	L.M	DG2/7
28N/9156370	SP.21	. NIPPLE, lubricating	1	-	C	DG2/13
509	E.A1.20.806	. PIN, special	1	S.11	C	DG2/11
510	E.A1.20.807	. PLATE, locking	1	L.72	C	DG2/3
549	EEAS.5	. WASHER, red fibre, for lubricating nipple	1	BSS.216	C	DG2/12
		. Attaching parts for E.A1.20.817:-				
503	E.A1.20.803	. Pin, special	1	S.11	C	DG2/6
28P/19176	SP90/G6	. Pin, cotter, split	2	-	C	DG2/6
9892	E.A1.20.869	. ROD, PUSH, INBOARD, FLAP CONTROL BETWEEN HINGE AND OPERATING JACK CONNECTING ARM, ASSEMBLY Spares for:-	1	-	B	DG1/17
507	E.A1.20.839	. BUSH	1	DTD.197	C	
6920	E.A1.20.827	. EYE-END	1	L.65	C	
508	E.A1.20.825	. FORK-END	1	L.65	C	
		. Attaching parts for E.A1.20.827 and E.A1.20.825:-				
1096	EEAS.37/15A	. Nipple	6	S.96	C	
	EEAS.38/2A	. Spoke (Make from AGS.935/B)	3	S.96	L.M	
28N/9156370	SP21	. NIPPLE, lubricating	1	-	C	
509	E.A1.20.806	. PIN, special	1	S.11	C	
510	E.A1.20.807	. PLATE, locking	1	L.72	C	
549	EEAS.5	. WASHER, red fibre, for lubricating nipple	1	BSS.216	C	
		. Attaching parts for E.A1.20.869:-				
503	E.A1.20.803	. Pin, special	1	S.11	C	DG1/13
28P/19176	SP90/G6	. Pin, cotter, split	2	-	C	DG1/12

CONTROLS
FLAP OPERATING MECHANISM, STARBOARD

Ref. No.	Part No.	Description 1 2 3 4 5 6	No. off	Matl. Spec.	Cl. of Equip.	Plate No.
					M.R. L.M.	
9893	E.A1.20.889	ROD, PUSH, INBOARD FLAP, CENTRE WING ASSEMBLY Spares for:	1	—	B	DG2/9
507	E.A1.20.839	BUSH	1	DTD.197	C	
6920	E.A1.20.827	EYE-END	1	L.65	C	
508	E.A1.20.825	FORK-END	1	L.65	C	
		Attaching parts for E.A1.20.827 and E.A1.20.825:-				
1096	EEAS.37/15A	Nipple	6	S.96	C	
	EEAS.38/2A	Spoke (Make from AGS.935/B)	3	S.96	L.M.	
28N/9156370	SP.21	NIPPLE, lubricating	1	—	C	
509	E.A1.20.805	PIN, special	1	S.11	C	
510	E.A1.20.807	PLATE, locking	1	L.72	C	
549	EEAS.5	WASHER, red fibre, for lubricating nipple	1	BSS.216	C	
		Attaching parts for E.A1.20.889:-				
503	E.A1.20.803	Pin, special	1	S.11	C	DG2/15
28P/19716	SP90/G6	Pin, cotter, split	2	—	C	DG2/14
9894	E.A1.20.891	ROD, PUSH, FLAP, OUTER WING, ASSEMBLY Spares for:	1	—	B	DG2/27
507	E.A1.20.839	BUSH	1	DTD.197	C	
6290	E.A1.20.827	EYE-END	1	L.65	C	
508	E.A1.20.825	FORK-END	1	L.65	C	
		Attaching parts for E.A1.20.827 and E.A1.20.825:-				
1096	EEAS.37/15A	Nipple	6	S.96	C	
	EEAS.38/2A	Spoke (Make from AGS.935/B)	3	S.96	L.M.	
28N/9156370	SP.21	NIPPLE, lubricating	1	—	C	
509	E.A1.20.805	PIN, special	1	S.11	C	
510	E.A1.20.807	PLATE, locking	1	L.72	C	
549	EEAS.5	WASHER, red fibre, for lubricating nipple	1	BSS.216	C	
		Attaching parts for E.A1.20.891:-				
503	E.A1.20.803	Pin, special	1	S.11	C	DG2/15
28P/19716	SP90/G6	Pin, cotter, split	2	—	C	DG2/14

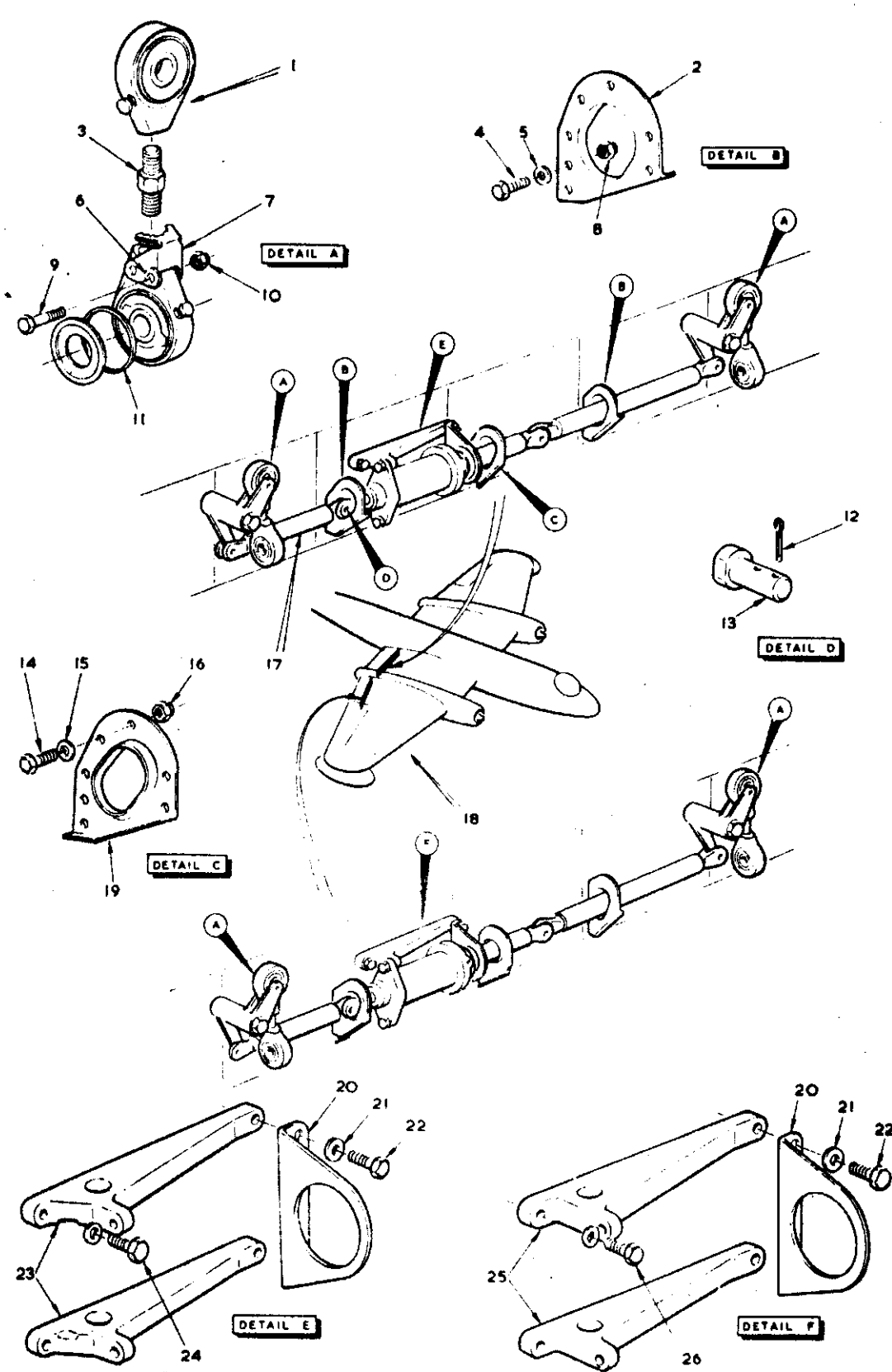


FIG.1 FLAP OPERATING MECHANISM STBD

CODE ABC,D

SECT. DG

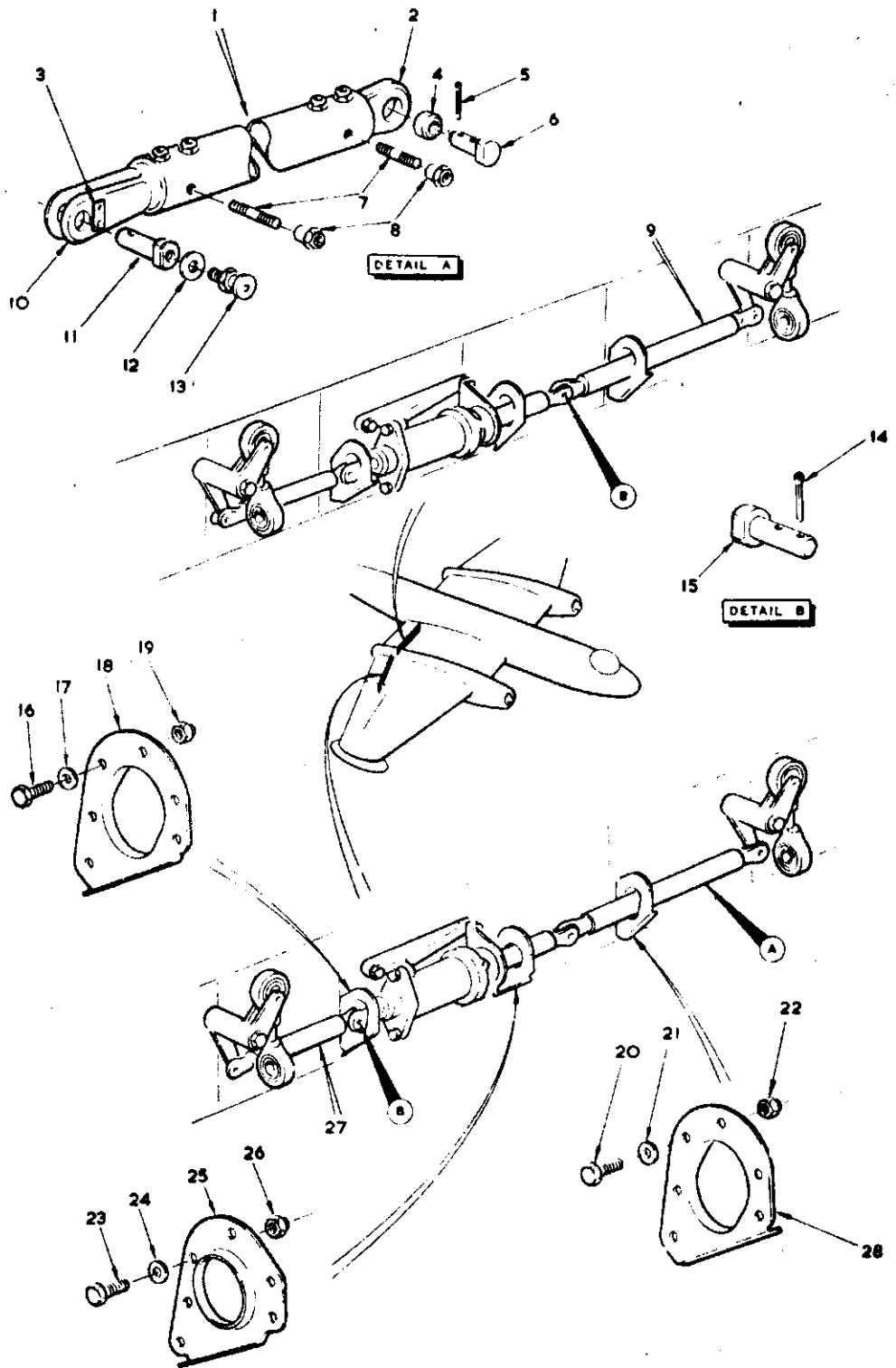


FIG. 2 FLAP OPERATING MECHANISM STBD

CODE A,B,C,D

SECT. D6

AUTO PILOT

Ref. No.	Part No.	Description	No. off	Mtrl. Spec.	Cl. of Equip.	Plane No.				
					M.R. L.M.					
			1	2	3	4	5	6		
	E.H8.46.1	AUTO PILOT, Mk.10, INSTALLATION	—	—	—					
	E.H9.46.1	AUTO PILOT, Mk.10, INSTALLATION	—	—	—					
		Spares for:-								
	E.H8.45.23	. BALANCE, spring, bob-weight	1	—	—					DH1/1
	E.H8.45.11	. BLOCK, packing	1	—	—					DH2/2
	E.C3.46.193	. BOLT, stop	4	—	—					DH1/3
	E.C4.45.31	. BRACKET, MOUNTING, ASSEMBLY	1	—	—					DH2/4
	E.H8.46.11	. CHANNEL, mounting	1	—	—					DH2/5
		Attaching parts for E.H8.46.11:-								
28D/1215665	A59/9C	. Bolt, 2BA	4	—	—	C				DH2/6
28D/9140644	A25/9C	. Bolt, 2BA	2	—	—	C				DH2/7
28D/1214031	AS.1242/8C	. Bolt, csk. hd. 2BA	8	—	—	C				DH2/8
28M/1278190	AGS.2001/C/1	. Nut, stiff, 2BA	14	—	—	C				DH2/9
28W/9419402	SP.13/C	. Washer	14	—	—	C				
	E.C4.45.59	. LAYSHAFT ASSEMBLY	1	—	—	—				DH2/10
		Spares for:-								
	HOFFMAN No.S3	. BEARING	2	—	—	—				DH2/11
	E.C4.45.35	. HOUSING, layshaft spindle (inbd.)	1	—	—	—				DH2/12
	E.C4.45.47	. HOUSING, layshaft spindle (outbd.)	1	—	—	—				DH2/13
	E.C4.45.61	. LAYSHAFT	1	—	—	—				DH2/14
	E.C4.45.65	. SHIM	2	—	—	—				DH2/15
	E.C4.45.63	. SPINDLE, layshaft	1	—	—	—				DH2/16
		Attaching parts for E.C4.45.35:- and E.C4.45.47:-								
28M/1011478	A27/JS	. Nut, slotted 3/8" BSF	1	—	—	C				
28P/1011184	SP.29/H6	. Pin, taper, 1/8"	1	—	—	C				
28W/9419477	SP.15/J	. Washer, 3/8"	1	—	—	C				
		Attaching parts for E.C4.45.59.								
28D/1214528	A59/2C	. Bolt, 2BA	8	—	—	C				DH2/17
28M/5808573	A27/CS	. Nut, slotted, 2BA	8	—	—	C				DH2/18
28P/19227	SP.90/C8	. Pin, split	8	—	—	C				
28W/9419402	SP.13/C	. Washer	8	—	—	C				
	AGS.2097/B/4/E	. LEAD, bonding	4	—	—	—				DH3/19
	AGS.2097/B/3/C	. LEAD, bonding	1	—	—	—				DH3/20
	E.C4.45.51	. LEVER, sub-assembly	1	—	—	—				DH2/21
		Attaching parts for E.C4.45.51:-								
28D/1215661	A59/5C	. Bolt, 2BA	6	—	—	C				DH2/22
28M/5808573	A27/CS	. Nut, slotted, 2BA	6	—	—	C				DH2/23
28P/9486478	SP.90/C5	. Pin, split	6	—	—	C				
28W/9419402	SP.13/C	. Washer	6	—	—	C				
	E.C4.45.53	. LEVER, bob-weight	1	—	—	—				DH2/24
		Attaching parts for E.C4.45.53:-								
28D/1215680	A59/4C	. Bolt, 2BA	4	—	—	C				DH2/25
28M/5808573	A27/CS	. Nut, slotted, 2BA	4	—	—	C				DH2/26
28P/9486478	SP.90/C5	. Pin, split	4	—	—	C				
28W/9419402	SP.13/C	. Washer	4	—	—	C				
	E.C4.45.57	. LEVER, bob-weight	1	—	—	—				DH2/27
		Attaching parts for E.C4.45.57:-								
28D/1007976	AS.1242/4C	. Bolt, csk. hd. 2BA	4	—	—	C				DH2/28
28M/5808573	A27/CS	. Nut, slotted, 2BA	4	—	—	C				DH2/29
28P/9486478	SP.90/C5	. Pin, split	4	—	—	C				
28W/9419402	SP.13/C	. Washer	4	—	—	C				

AUTO PILOT

Ref. No.	Part No.	Description	No. off	Metl. Spec.	Cl. of Equip.		Plate No.	
					M.R.	L.M.		
			1	2	3	4	5	6
	E.A9.46.99	LEVER ASSEMBLY Attaching parts for E.A9.46.99.	—	—	—	—	—	DH1/30
28M/5808573	E.C3.46.189	Bolt, driving	6	—	—	—	—	DH1/31
28P/9527619	A27/CS	Nut, slotted	6	—	—	C	—	DH1/32
	SP.90/C7	Pin, split	6	—	—	C	—	
	E.C3.46.195	LEVER, elevator servo Attaching parts for E.C3.46.195.	1	—	—	—	—	DH1/33
28M/5808573	E.C3.46.189	Bolt, driving	6	—	—	—	—	DH1/34
28P/9527619	A27/CS	Nut, slotted	6	—	—	C	—	DH1/35
28W/9419402	SP.90/C7	Pin, split	6	—	—	C	—	
	SP.13/C	Washer	6	—	—	C	—	
	E.C3.46.185	LEVER, rudder servo Attaching parts for E.C3.46.185.	1	—	—	—	—	DH1/36
28M/5809573	E.C3.46.189	Bolt, driving	6	—	—	—	—	DH1/37
28P/9527619	A27/CS	Nut, slotted, 2BA	6	—	—	C	—	DH1/38
28W/9419402	SP.90/C7	Pin, split	6	—	—	C	—	
	SP.13/C	Washer	6	—	—	C	—	
6TB/234	104/EAP	MOTOR, servo, Type B	3	—	—	A	—	DH1/39
6TB/232	111/EAP	MOUNTING, servo motor, Type A Attaching parts for 111/EAP:	3	—	—	A	—	DH1/40
28D/1008151	A25/4E	Bolt, 1/4" BSF (Ar frame 39)	6	—	—	C	—	DH1/41
28M/1011467	A27/ES	Nut, slotted, 1/4" BSF	6	—	—	C	—	DH1/42
28P/9527619	SP.90/C7	Pin, split	6	—	—	C	—	
28W/9418921	EEAS.1/3E	Screw, csk. hd. 1/4" BSF (at frame 22)	6	—	—	C	—	
	SP.13/E	Washer	6	—	—	C	—	
6TB/349	134/EAP	MOUNTING, amplifier unit, Type B Attaching parts for 134/EAP:	1	—	—	A	—	DH3/43
28D/9436920	A25/1C	Bolt, 2BA	16	—	—	C	—	DH3/44
28W/9419402	SP.13/C	Washer	16	—	—	C	—	
6TB/350	136/EAP	MOUNTING, coupling unit, Type B Attaching parts for 136/EAP:	1	—	—	A	—	DH3/45
28D/9436920	A25/1C	Bolt, 2BA	16	—	—	C	—	DH3/46
28M/1278190	AGS.2001/C/1	Nut, stiff, 2BA	16	—	—	C	—	DH3/47
28W/9419402	SP.13/C	Washer	16	—	—	C	—	
6TB/402	143/EAP	MOUNTING, roll error unit Attaching parts for 143/EAP:	1	—	—	C	—	DH3/48
28D/9436920	A25/1C	Bolt, 2BA	16	—	—	C	—	DH3/49
28W/9419402	SP.13/C	Washer	16	—	—	C	—	
28M/1011470	A27/GT	NUT, thin, 5/16" BSF (for stop bolt)	4	—	—	C	—	DH1/50
	E.A3.46.3	PLATFORM INSTALLATION Spare for:	—	—	—	—	—	
	E.C3.46.7	MOUNTING, elevator servo motor	1	—	—	—	—	DH1/51
	E.C3.46.9	MOUNTING, rudder servo motor	1	—	—	—	—	DH1/52
28D/9436920	A25/1C	Attaching parts for E.C3.46.7 and E.C3.46.9:- Bolt, 2BA	6	—	—	C	—	DH1/53
28D/9133011	A25/2C	Bolt, 2BA	16	—	—	C	—	DH1/54
28W/9419402	SP.13/C	Washer	22	—	—	C	—	

Ref. No	Part No	1 2 3 4 5 6	Qty	Mater. Spec.	Cl. of Equip.		Plate No.
					M.R.	L.M.	
	E.C3.46.247	ROD, CONTROL, ASSEMBLY	1	-	-	-	DH1/65
		Spares for:-					
	E.C3.46.251	END, fitting	1	-	-	-	DH1/56
	E.C3.46.249	FORK, end	1	-	-	-	DH1/57
	E.C3.46.255	FORK, end	1	-	-	-	DH1/58
28M/1011509	A29/JP	NUT, 3/8" BSF	1	-	-	C	DH1/59
	E.C3.46.253	TUBE	1	-	-	C	DH1/60
		Attaching parts for E.C3.46.251 and E.C3.46.255					
	EEAS.37/13A	Nipple, spoke, 3/16" dia.	10	-	-	-	
	EEAS.41/2	Pin, sealing	2	-	-	-	
	AGS.2045/609	Rivet, Chobert, 3/16", dome head	2	-	-	-	
1570	EEAS.38/1A	Spoke, 6BA, (length as required)	5	-	-	C	
		Attaching parts for E.C3.46.247:-					
	EEAS.13/1	Bolt, special	1	-	-	-	DH1/61
	EEAS.13/2	Bolt, special	1	-	-	-	DH1/62
	EEAS.14	Bush	1	-	-	-	DH1/63
	EEAS.63/E	Nut, special	1	-	-	-	DH1/64
28M/1011467	A27/ES	Nut, slotted, 1/2" BSF	1	-	-	C	DH1/65
28P/9527619	SP.90/C7	Pin, split	2	-	-	C	
	EEAS.127	Tube, distance	1	-	-	-	DH1/66
28W/9418921	SP.13/E	Washer	1	-	-	C	
	E.H8.46.11	ROD CONTROL ASSEMBLY	1	-	-	-	DH2/67
		Spares for:-					
	E.C4.45.41	END, fitting	1	-	-	-	DH2/68
	E.C4.45.45	FORK, end	1	-	-	-	DH2/69
	E.H8.46.13	TUBE	1	-	-	-	DH2/70
		Attaching parts for E.C4.45.41 and E.C4.45.45:-					
	EEAS.37/13A	Nipple, spoke, 3/16" dia.	12	-	-	-	
1570	EEAS.38/1A	Spoke, 6BA (length as required)	6	-	-	C	
		Attaching parts for E.H8.46.11:-					
	EEAS.13/1	Bolt, special	2	-	-	-	DH2/71
	EEAS.14	Bush	2	-	-	-	DH2/72
	EEAS.63/E	Nut, special	2	-	-	-	DH2/73
28P/9527619	SP.90/C7	Pin, split	2	-	-	C	
	EEAS.127	Tube, distance	2	-	-	-	DH2/74
	E.C4.45.65	SHIM	QR	-	-	-	DH2/75
	E.C3.46.191	STOP	2	-	-	-	DH1/76
		Attaching parts for E.C3.46.191					
28D/1013178	AS.1242/5E	Bolt, csk. hd. 1/2" BSF	1	-	-	C	DH1/77
28D/1011238	A25/3E	Bolt, 1/2" BSF	1	-	-	C	DH1/78
28D/1011240	A25/5E	Bolt, 1/2" BSF	1	-	-	C	DH1/79
28M/1011467	A27/ES	Nut, slotted, 1/2" BSF	3	-	-	C	DH1/80
	E.C3.46.199	Packer	2	-	-	-	DH1/81
28P/9627619	SP.90/C7	Pin, split	3	-	-	C	
28W/9418921	SP.13/E	Washer	3	-	-	C	
	E.C4.46.51	STRUT, SPRING, ELEVATOR ASSEMBLY	1	-	-	-	DH1/82
		Attaching parts for E.C4.46.51					
	EEAS.13/1	Bolt, special	2	-	-	-	DH1/83
	EEAS.14	Bush	2	-	-	-	DH1/84
	EEAS.63/E	Nut, special	2	-	-	-	DH1/85
28P/9527619	SP.90/C7	Pin, split	2	-	-	C	
	EEAS.127	Tube, distance	2	-	-	-	DH1/86

AUTO PILOT

Ref. No.	Part No.	Description	No. off	Matl. Spec.	Cl. of	Plate No.
					Equip. M.R. L.M.	
		1 2 3 4 5 6				
	E.C4.46.49	STRUT, SPRING, RUDDER, ASSEMBLY	1	—	—	DH1/87
		Attaching parts for E.C4.46.49:-				
	EEAS.13/1	Bolt, special	2	—	—	DH1/88
	EEAS.14	Bush	2	—	—	DH1/89
	EEAS.63/E	Nut, special	2	—	—	DH1/90
28P/9527619	SP.90/C7	Pin, split	2	—	C	
	EEAS.127	Tube, distance	2	—	—	DH1/81
6TB/204	114/EAP	UNIT, amplifier, Type A	1	—	A	DH3/92
6TB/212	122/EAP	UNIT, condenser, Type A	1	—	A	DH3/93
		Attaching parts for 122/EAP:-				
28D/9436920	A25/1C	Bolt, 2BA	4	—	C	DH3/94
28W/9419402	SP.13/C	Washer	4	—	C	
6TB/346	135/EAP	UNIT, coupling, Type B	1	—	A	DH3/95
	609/SUE/1	UNIT, coupling, Doppler	1	—	A	DH3/96
		Attaching parts for 609/SUE/1:-				
28D/9436920	A25/1C	Bolt, 2BA	4	—	C	DH3/97
28W/9419402	SP.13/C	Washer	4	—	C	
6TB/1648	163/EAP	UNIT, Gyro, Type B	1	—	A	DH3/98
		Attaching parts for 163/EAP:-				
28M/1011475	A27/EP	Nut, 1/2" BSF	1	—	C	DH3/99
28M/1201610	AGS.2001/E/1	Nut, stiff, 1/2" BSF	3	—	C	DH3/100
	EAP/5658	Nut, levelling	1	—	—	DH3/101
	EAP/5660	Strip, sealing	1	—	—	DH3/102
	EAP/5659	Washer, tongue	1	—	—	
6TB/401	147/EAP	UNIT, roll error cut out, Type A	1	—	A	DH3/103
	E.C4.45.55	WEIGHT, balance	1	—	—	DH2/104
		Attaching parts for E.C4.45.55:-				
28D/1212903	AS.1242/14J	Bolt, csk. hd. 3/8" BSF	1	—	C	
28M/15199	A58/JS	Nut, slotted, 5/16" BSF	1	—	C	DH2/105
28P/9527619	SP.90/C7	Pin, split	1	—	C	DH2/106
28W/9419477	SP.15/J	Washer	1	—	C	

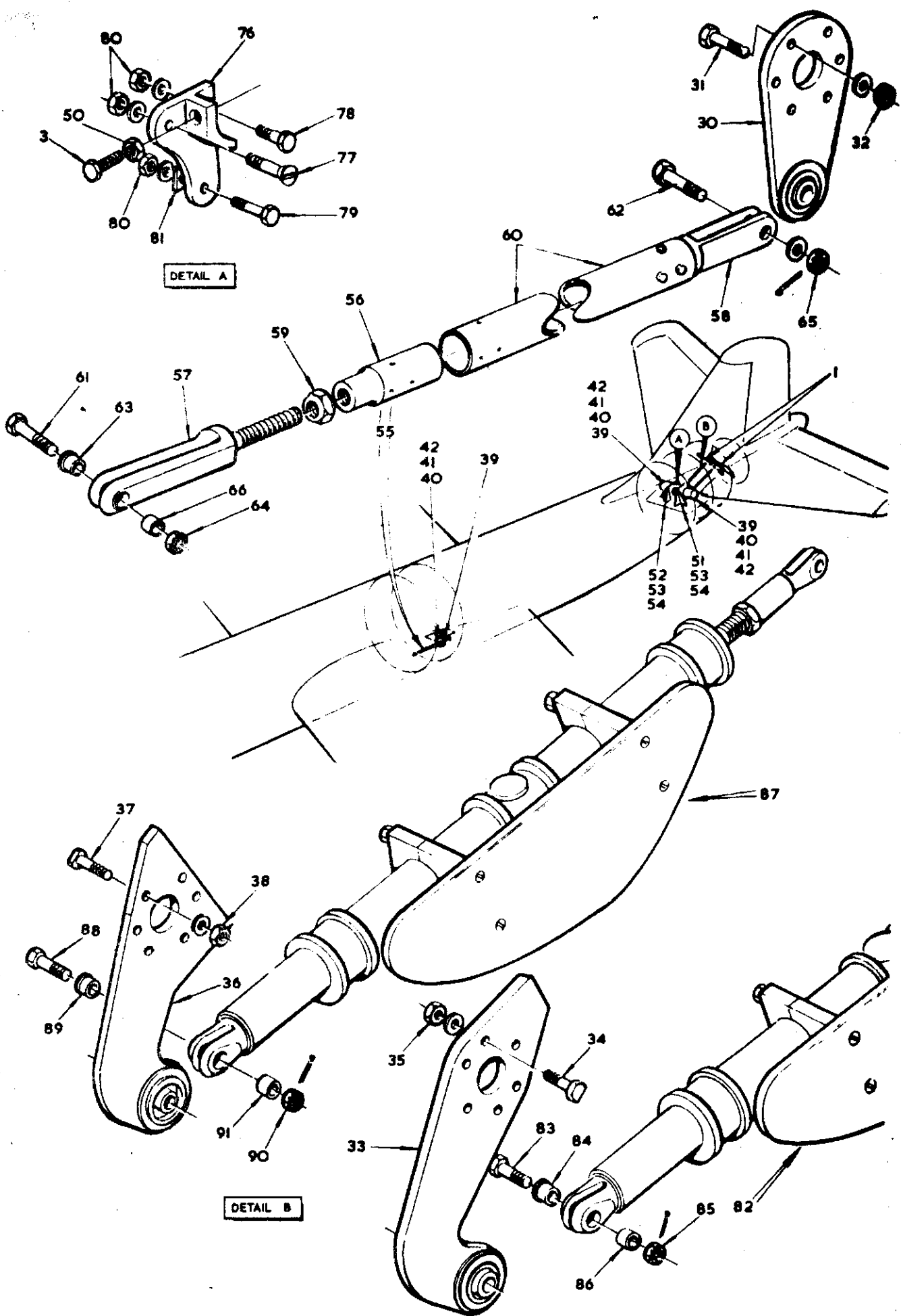


FIG.1 AUTO-PILOT MK.10 INSTALLATION

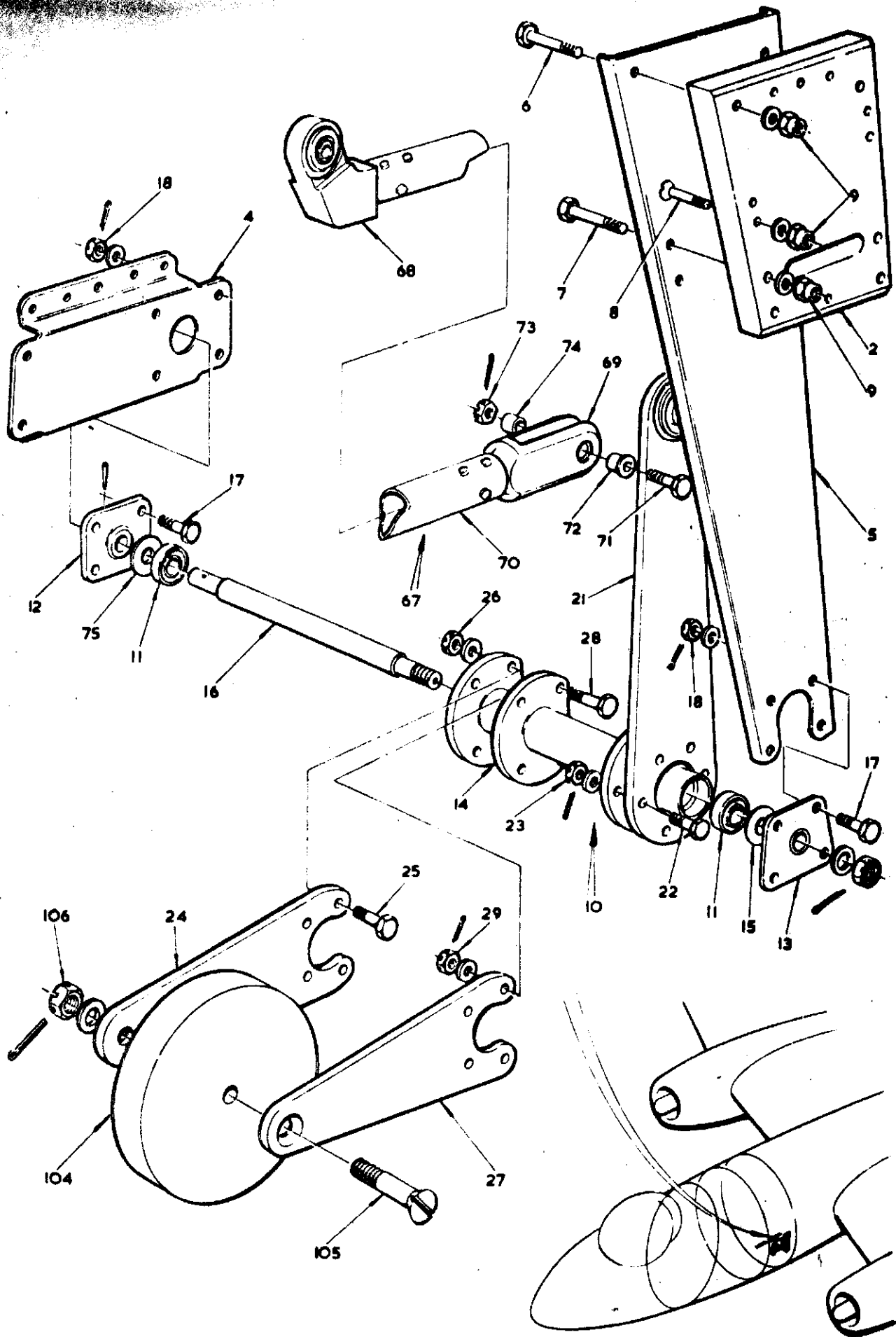


FIG. 2. AUTO-PILOT MK. 10 INSTALLATION

CODE. A & B

SECT. DM

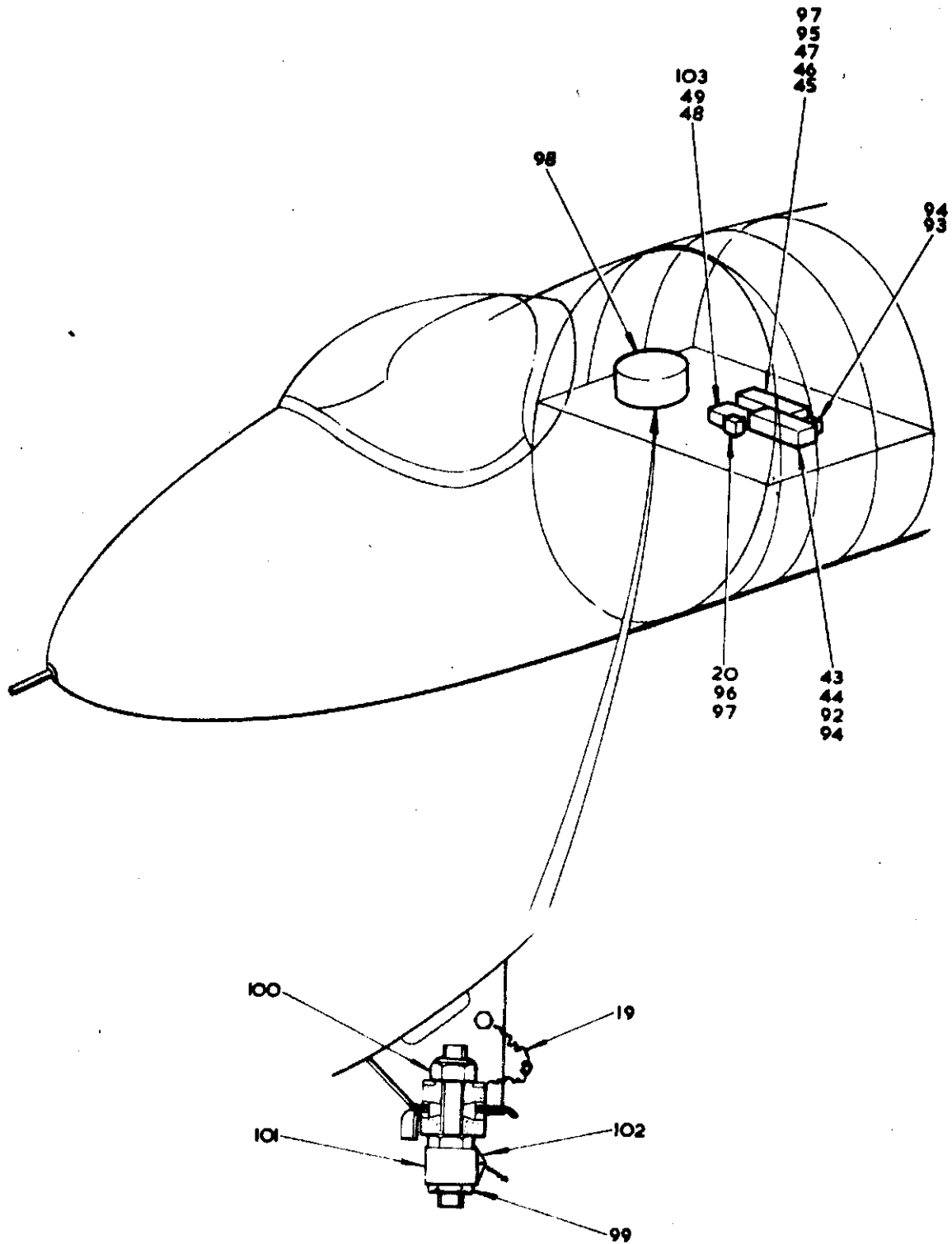


FIG.3 AUTO-PILOT MK.10 INSTALLATION

CODE A & B

SECT DM

This file was downloaded
from the RTFM Library.

Link: www.scottbouch.com/rtfm

Please see site for usage terms,
and more aircraft documents.



TELEBRIEF
CONNECTIONS

E