

L MAINPLANE

MAINPLANE
MAINPLANE AND FLAPS

Ref. No.	Part No.	Description	No. off	Matl. Spec.	Cl. of Equip.		Plats No.
					M.R.	L.M.	
		1 2 3 4 5 6					
	E.H8.00.11	WING, PORT, ASSEMBLY	1	-	-	-	1 1
	E.H8.00.12	WING, STARBOARD, ASSEMBLY	1	-	-	-	1 2
		Spares for:-					
6932	E.A3.40.179	ADAPTOR, lubricating nipple for side stay pivot bolt	1	S.96	C	-	1 3
	E.A9.00.109	AILERON, PORT, ASSEMBLY (See page LB.1)	-	-	-	-	-
	E.A9.00.110	AILERON, STARBOARD, ASSEMBLY (See page LB.1)	-	-	-	-	-
5541	E.A3.20.2479	BOLT, aileron, hinge bracket	4	S.96	C	-	1 4
397	E.A1.40.243	BOLT, U/C, hinge, side stay link	1	S.65 or S.81	C	-	1 5
398	E.A1.20.1107	BOLT, main U/C	1	S.65	C	-	1 6
6931	E.A3.40.177	BOLT, U/C, side stay pivot	1	S.65 or S.81	-	-	1 7
28N/5555	AGS.899/8	COLLAR, air brake jack pins	2	-	C	-	3 1
12799	E.A9.25.3	FLAP, INNER WING, PORT, ASSEMBLY	1	-	A	-	3 2
12800	E.A9.25.4	FLAP, INNER WING, STARBOARD, ASSEMBLY	1	-	A	-	3 3
12797	E.A9.25.1	FLAP, OUTER WING, PORT, ASSEMBLY	1	-	A	-	3 4
12798	E.A9.25.2	FLAP, OUTER WING, STARBOARD, ASSEMBLY	1	-	A	-	3 5
		Attaching parts for E.A9.25.3, E.A9.25.4, E.A9.25.1 and E.A9.25.2:-					
431	E.A1.25.63	Bolt, control link attachment	2	S.11	C	-	3 6
5185	E.A1.25.266	Bolt, hinge attachment	2	S.15	C	-	3 7
28M/1011476	A27/JS	Nut, slotted, 3/8" BSF	4	-	C	-	3 8
433	E.A1.25.43	Washer, spherical hinge attachment	2	S.11	C	-	3 9
434	E.A1.25.67	Washer, bevel, control link attachment	4	L.40 or L.64	C	-	3 10
27439	EEAS.28/37FU	Washer, 3/8" dia.	4	-	C	-	3 11
435	E.A1.50.69	LINK, COWL DOOR ASSEMBLY	1	-	C	-	1 8
		Spares for:-					
379	E.A1.50.75	BEARING, spherical	2	L.40	C	-	1 9
	E.A1.50.77	FITTING, plug end	2	L.40	-	-	1 10
		Attaching parts for E.A1.50.77:-					
28P/1203279	SP65/L8	Pin, taper	2	-	C	-	1 11
436	E.A1.50.71	HOUSING, bearing	2	S.1	C	-	1 12
	E.A1.50.89A	LINK, tube, 1/2" o/d x 17 SWG	1	T.45	-	-	1 13
28M/9158370	SP.21	NIPPLE, lubricating, side stay pivot	1	-	C	-	1 14
437	E.A1.40.287	NUT, castle, side stay link bolt	2	S.11	C	-	1 15
438	E.A1.20.1287	NUT, main u/c, pivot bolt	1	S.11	C	-	1 16
3047	E.A3.20.311	PANEL, access, aileron control joint, bottom skin	1	-	C	-	2 1
3054	E.A3.20.347	PANEL, access, air brake operating jack, bottom skin	1	-	C	-	2 2
3053	E.A3.20.353	PANEL, access, rear wing attachment pin	1	DTD.548	C	-	2 3
3051	E.A3.20.371	PANEL, access, front wing attachment pin, top skin, port	1	DTD.548	C	-	2 4
3052	E.A3.20.379	PANEL, access, front wing attachment pin, top skin, starboard	1	DTD.548	C	-	2 5
3050	E.A3.20.385	PANEL, access, rear wing attachment pin, bottom skin	1	-	C	-	2 6
3046	E.A3.20.391	PANEL, access, rear wing attachment pin, top skin, port	1	L.73	C	-	2 7
3049	E.A3.20.399	PANEL, access, rear wing attachment pin, top skin, starboard	1	-	C	-	2 8
3055	E.A3.20.405	PANEL, access, front wing attachment pin, bottom skin, port	1	-	C	-	2 9
3056	E.A3.20.407	PANEL, access, front wing attachment pin, bottom skin, starboard	1	-	C	-	2 10
3057	E.A3.20.409	PANEL, access, rear wing attachment pin, bottom skin, port	1	-	C	-	2 11

**MAINPLANE
MAINPLANE AND FLAPS**

Ref. No.	Part No.	Description	No. off	Matl. Spec.	Cl. of	Plate
					Equip. M.R. L.M.	
		1 2 3 4 5 6				
3018	E.A1.20.1693	. PANEL, access, forward, fixing bolts of connecting ring to false spar and rib	2	L.73	C	2 12
3019	E.A1.20.2289	. PANEL, access, aileron control intermediate joint bottom skin Attaching parts for E.A3.20.311, E.A3.20.347, E.A3.20.353, E.A3.20.377, E.A3.20.378, E.A3.20.685, E.A3.20.687, E.A3.20.688, E.A1.20.1045, E.A1.20.1046, E.A1.20.1099, E.A1.20.1693, and E.A1.20.2289:-	1	-	C	2 13
1026	EEAS.1/1½C	. Screw, csk. hd. 2 BA	QR	S.96	C	2 14
1468	EEAS.1/2C	. Screw, csk. hd. 2 BA	QR	S.96	C	2 15
1032	EEAS.1/2E	. Screw, csk. hd. ½" BSF	QR	S.96	C	2 16
1033	EEAS.1/2½E	. Screw, csk. hd. ½" BSF	QR	S.96	C	2 17
1036	EEAS.1/5E	. Screw, csk. hd. ½" BSF	QR	S.96	C	2 18
28P/934	SP/4/Y/H12	. PIN, air brake jack hinge	1	-	C	3 12
28P/1099	SP/4/Y/H17	. PIN, air brake, jack hinge	1	-	C	3 13
4529	E.A3.20.1813	. PIN, split, u/c pivot bolt	1	DTD.268	C	1 17
40037	E.A9.20.1137	. PLATE, locking, u/c pivot bolt	1	DTD.124A	C	1 18
5001	E.A1.24.901	. SHIM, aileron centre hinge	1	-	C	1 19
6380	E.A3.20.1129	. STOP, block, for side stay pivot bolt, port	1	DTD.683	C	1 20
6603	E.A3.20.1130	. STOP, block, for side stay pivot bolt, starboard	1	DTD.683	C	1 21
	E.A1.50.859	. SUPPORT, COWL HOOP TO WING, PORT ASSEMBLY	-	-	-	1 22
	E.A1.50.860	. SUPPORT, COWL HOOP TO WING, STARBOARD ASSEMBLY	-	-	-	1 23
		Spares for:-				
12014	E.A3.00.235	. SUPPORT, hoop engine cowl, port (Ref. drg. E.A1.50.913)	1	-	C	1 24
12015	E.A3.00.236	. SUPPORT, hoop engine cowl, starboard (Ref. drg. E.A1.50.914)	1	-	C	1 25
441	E.A1.50.949	. SUPPORT, hoop engine cowl, port	1	-	C	1 26
442	E.A1.50.950	. SUPPORT, hoop engine cowl, starboard Attaching parts for E.A3.00.235, E.A3.00.236, E.A1.50.949 and E.A1.50.950:-	1	-	C	1 27
2742	E.A1.50.363	. Bolt, special	4	H.T.S.	C	1 28
28W/9419466	SP13/J	. Washer	4	-	C	1 29
41328	E.A3.00.5174	. TIP, WING, PORT, ASSEMBLY (See page LD.1)	-	-	-	-
41329	E.A3.00.5175	. TIP, WING, STARBOARD, ASSEMBLY (See page LD.1)	-	-	-	-
443	E.A1.20.1285	. WASHER, main u/c pivot bolt	1	L.45	C	1 30
	E.H8.20.1	. WING STRUCTURE, PORT, ASSEMBLY (See page LE.1)	-	-	-	-
	E.H8.20.2	. WING STRUCTURE, STARBOARD, ASSEMBLY (See page LE.1)	-	-	-	-

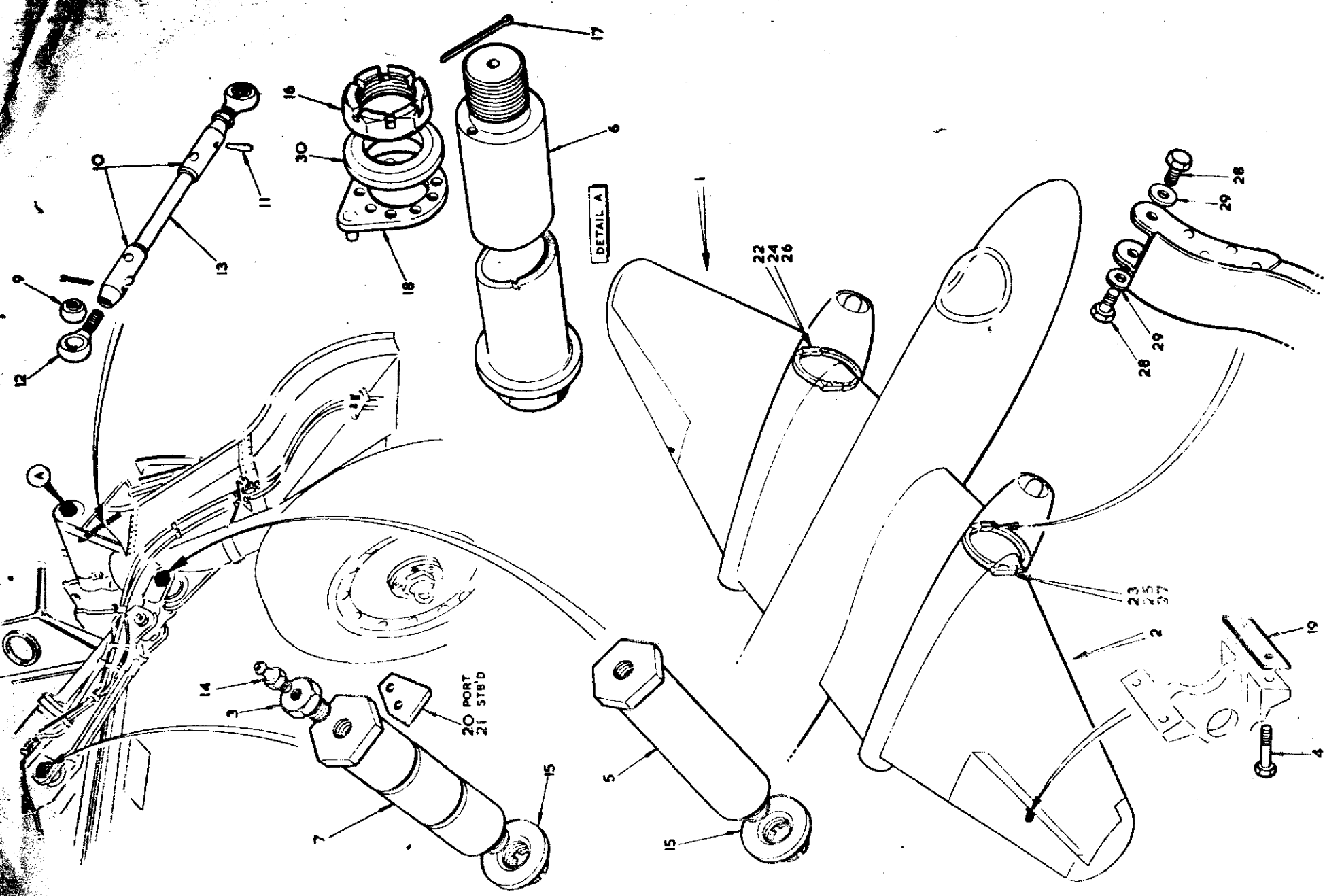


FIG. 1 MAINPLANE AND FLAPS

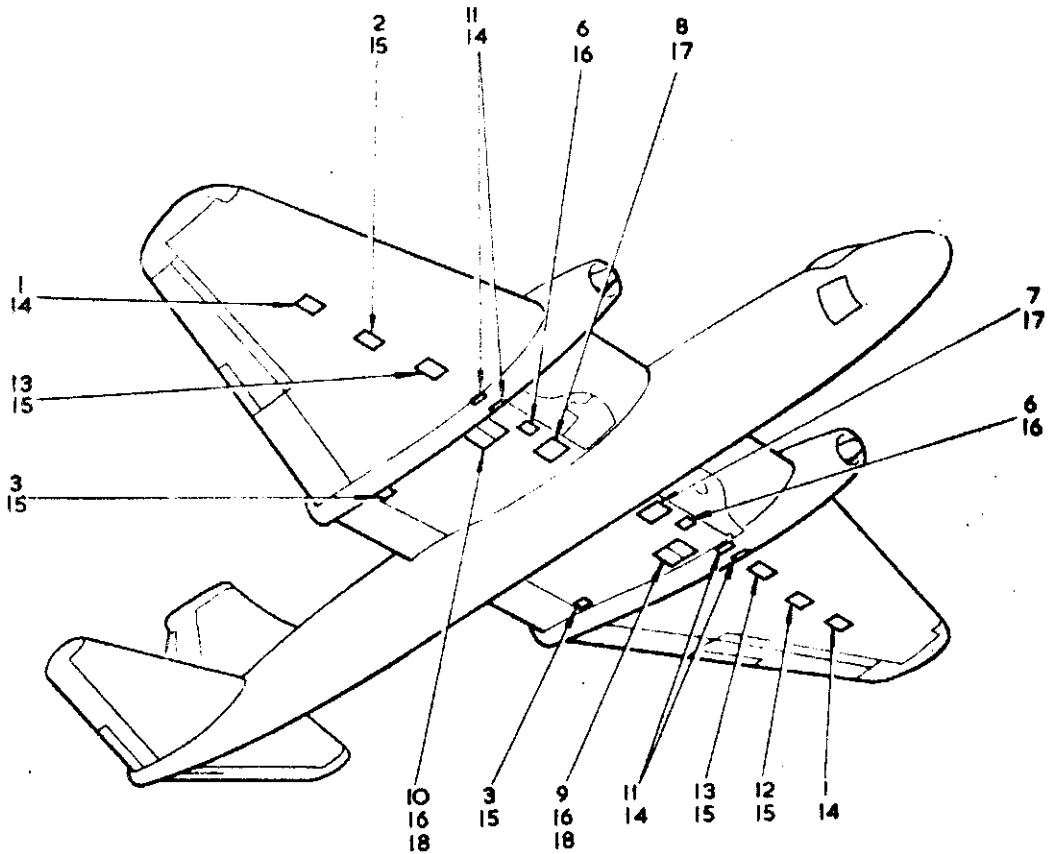
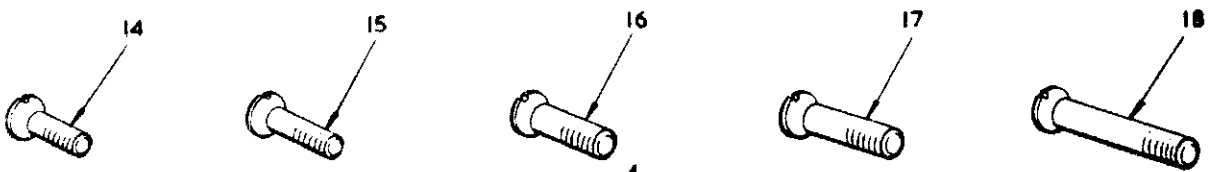
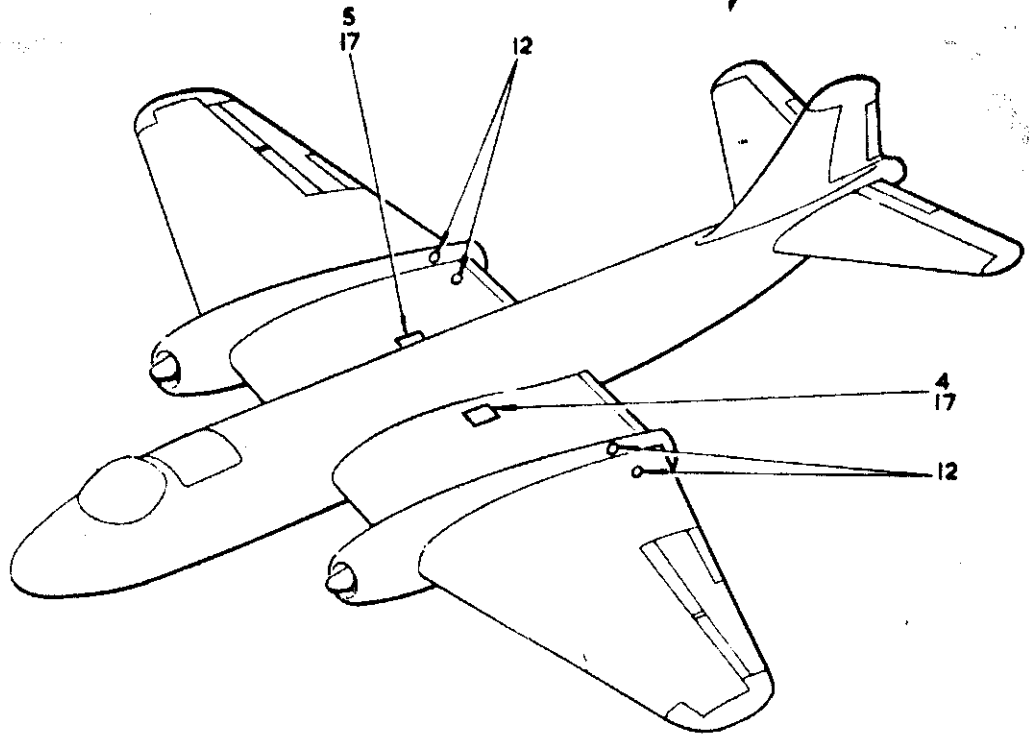
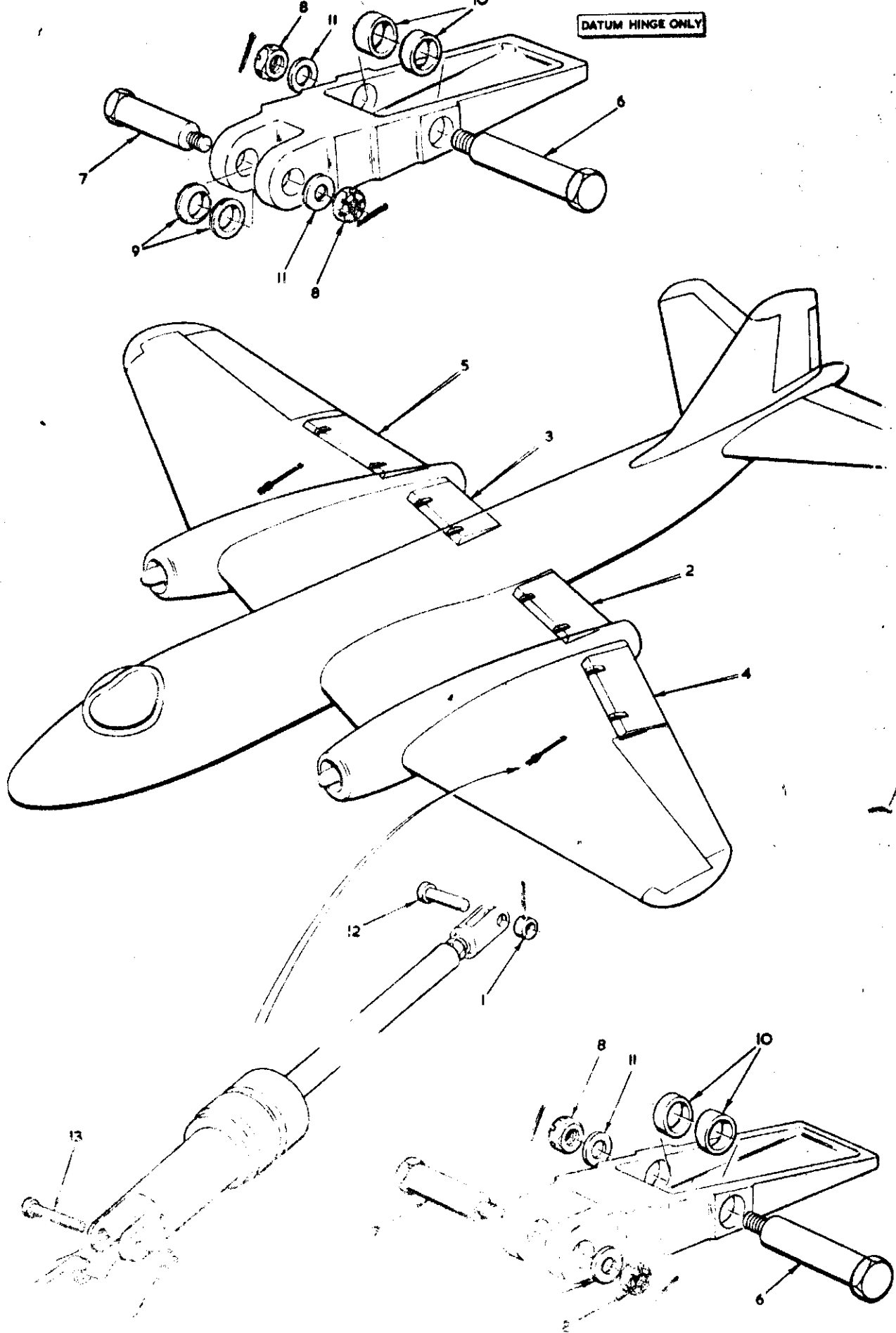


FIG.2 MAINPLANE AND FLAPS

CODE A,B

SECT LA

DATUM HINGE ONLY



MAINPLANE
AILERON

Ref. No.	Part No.	Description	No. off	Mat. Spec.	Cl. of Equip.		Place No.
					M.R.	L.M.	
		1 2 3 4 5 6					
	E.A9.00.109	AILERON, PORT, ASSEMBLY (Spares condition) (Ref. Drg. E.A9.24.1)	1	-	-	-	LB1/1
	E.A9.00.110	AILERON, STARBOARD, ASSEMBLY (Spares condition) (Ref. Drg. E.A9.24.2)	1	-	-	-	LB1/45
	E.A9.24.5	AILERON, REAR PORTION, PORT, ASSEMBLY	1	-	MR	-	LB1/2
	E.A9.24.6	AILERON, REAR PORTION, STARBOARD, ASSEMBLY	1	-	MR	-	LB1/46
		Spares for:-					
447	E.A1.24.269	CLIP, tab, push rod fairing, 30 SWG	1	Spring steel	C	-	LB1/3
449	E.A1.24.247	HOUSING, bearing, tab hinge inboard Attaching parts for E.A1.24.247:-	1	L.40	C	-	LB1/9
28M/9403520	A27/CP	Nut, 2 BA	4	-	C	-	LB1/10
1468	EEAS.1/2C	Screw, 2 BA	4	S.96	C	-	LB1/11
28W/9419475	SP16/C	Washer	4	-	C	-	LB1/12
448	E.A1.24.199	HOUSING, bearing, tab hinge outboard Attaching parts for E.A1.24.199:-	1	L.64	C	-	LB1/4
28D/9133011	A25/2C	Bolt, 2 BA	3	-	C	-	LB1/5
28M/9403520	A27/CP	Nut, 2 BA	3	-	C	-	LB1/6
28W/9419475	SP15/C	Washer	3	-	C	-	LB1/7
28W/9419404	SP16/C	Washer	3	-	C	-	LB1/8
450	E.A1.24.261	HOUSING, C/W bearing, tab hinge centre, port	1	-	B	-	LB1/13
451	E.A1.24.262	HOUSING, C/W bearing, tab hinge centre, starboard Attaching parts for E.A1.24.261 and E.A1.24.262:-	1	-	B	-	LB1/47
28D/9133012	A25/3C	Bolt, 2 BA	2	-	C	-	LB1/14
28D/8308	AS.1242/3C	Bolt, csk. hd. 2 BA	1	-	C	-	LB1/15
28M/9403520	A27/CP	Nut, 2 BA	3	-	C	-	LB1/16
28W/9419404	SP16/C	Washer	3	-	C	-	LB1/17
6807	E.A1.24.915	TAB, fixed, port	1	-	C	-	LB1/18
6808	E.A1.24.916	TAB, fixed, starboard	1	-	C	-	LB1/48
	E.A3.24.177	ATTACHMENT OF BEARING AT OUTBOARD HINGE, RIB 20 Consisting of:-	-	-	-	-	LB1/19
2A/9500467	SKEFCO CBA.3	BEARING, ballrace	1	-	B	-	LB1/20
28N/12353	AGS.2030/46	CIRCLIP, 1.7/16" I/D	1	-	C	-	LB1/21
	E.A3.24.183	ATTACHMENT OF TOP AND BOTTOM NOSE SKIN TO AILERON SPAR, PORT	-	-	-	-	LB1/22
	E.A3.24.184	ATTACHMENT OF TOP AND BOTTOM NOSE SKIN TO AILERON SPAR, STARBOARD	-	-	-	-	LB1/49
		Spares for:-					
3020	E.A1.24.405	COVER, inspection, tab gear, 20 SWG Attaching parts for E.A1.24.405:-	1	L.72	C	-	LB1/23
20649	E.A3.24.191	Bolt, 2 BA	6	S.96	C	-	LB1/24

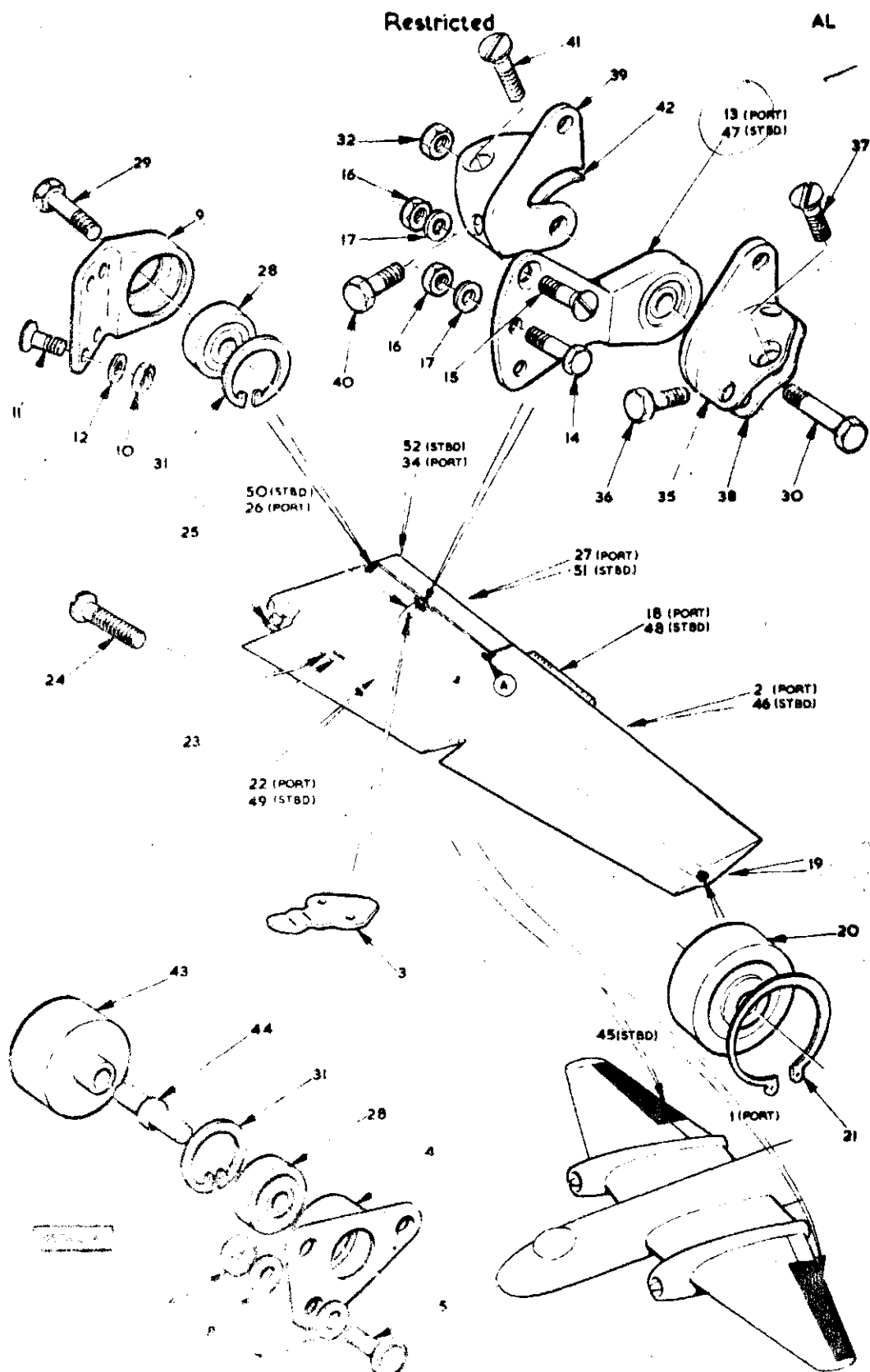
MAINPLANE
AILERON

Ref. No.	Part No.	Description	No. off	Matl. Spec.	Cl. of Equip.	Note No.
					M.R. L.M.	
		1 2 3 4 5 6				
478	E.A1.24.271	STOP, rubber, aileron control	2	Shore 55	C	LB1/26
3021	E.A1.24.269	FAIRING, aileron tab, push rod, 18 SWG port	1	L.59	C	LB1/26
3022	E.A1.24.270	FAIRING, aileron tab, push rod, 18 SWG starboard	1	L.59	C	LB1/50
	E.A3.24.175	TAB, AILERON HINGE, PORT INSTALLATION	-	-	-	LB1/27
	E.A3.24.176	TAB, AILERON HINGE, STARBOARD INSTALLATION	-	-	-	LB1/51
		Consisting of:-				
2A/9500462	SKEFKO CBA.0	BEARING, ballrace	2	-	B	LB1/28
28N/1007475	AGS.2030/15	CIRCLIP	2	-	C	LB1/31
3023	E.A1.24.923	TAB, AILERON HINGE, PORT, ASSEMBLY	1	-	A	LB1/34
3024	E.A1.24.924	TAB, AILERON HINGE, STARBOARD, ASSEMBLY	1	-	A	LB1/52
		Spares for:-				
481	E.A1.24.251	LUG, half, centre hinge	1	DTD.683	C	LB1/35
		Attaching parts for E.A1.24.251:-				
28D/9436920	A25/1C	Bolt, 2 BA	2	-	C	LB1/36
28D/1007975	AS.1242/1C	Bolt, csk. hd. 2 BA	1	-	C	LB1/37
	E.A1.24.955	Shim (if required, max.thick.0".022)	QR	Lam.Alum	-	LB1/38
482	E.A1.24.252	LUG, half, centre hinge	1	DTD.683	C	LB1/39
		Attaching parts for E.A1.24.252:-				
28D/9436920	A25/1C	Bolt, 2 BA	2	-	C	LB1/40
28D/1007975	AS.1242/1C	Bolt, csk. hd. 2 BA	1	-	C	LB1/41
	E.A1.24.956	Shim (if required, max.thick.0".022)	QR	Lam.Alum	-	LB1/42
4153	E.A1.24.227	SOCKET, hinge, inboard and outboard	2	L.40	C	LB1/43
483	E.A1.24.229	SPINDLE, hinge, outboard	1	S.11	C	LB1/44
		Attaching parts for E.A1.24.923 and E.A1.24.924:				
456	E.A1.24.231	Bolt, hinge, inboard	1	S.11	C	LB1/29
458	E.A1.24.265	Bolt, hinge, centre	1	S.11	C	LB1/30
28M/1006473	A27/CT	Nut, thin, 2 BA	1	-	C	LB1/32
	E.A9.24.21	TUBE, TORQUE AND TAB, OPERATING GEAR, PORT, ASSEMBLY	-	-	-	LB2/1
	E.A9.24.22	TUBE, TORQUE AND TAB, OPERATING GEAR, STARBOARD, ASSEMBLY	-	-	-	LB2/2
		Spares for:-				
2A/9500419	HOFFMANN T.17	BEARING, ballrace	1	-	B	LB2/3
2A/9500444	HOFFMANN BAL.5/8	BEARING, ballrace	1	-	B	LB2/4
12311	E.A9.24.53	BRACKET, operating gear bearing	1	L.65 or DTD.683	C	LB2/5
		Attaching parts for E.A9.24.53:-				
28D/1011240	A25/5E	Bolt, 1/4" BSF	2	-	C	LB2/6
28W/9418921	SP13/E	Washer	2	-	C	LB2/7
461	E.A1.24.301	BUSH, aileron, control stop	1	DTD.625	C	LB2/8
28N/2001716	AGS.2030/26	CIRCLIP, 1.9/16" O/D	1	-	C	LB2/9
28N/12455	AGS.2031/22	CIRCLIP, 1.1/16" O/D	1	-	C	LB2/10
470	E.A1.24.243	LEVER, operating tab, torque tube	1	L.40	C	LB2/11

CANBERRA

MAINPLANE
AILERON

Ref. No.	Part No.	Description	No. off	Matl. Spec.	Cl. of Equip. M.R. L.M.	Part No.
		Attaching parts for E.A1.24.243:-				
28D/9140645	A25/10C	Bolt, 2 BA	1	-	C	LB2/12
28M/13121	A27/CS	Nut, slotted, 2BA	1	-	C	LB2/13
28P/9527619	SP90/C7	Pin, cotter, split	1	-	C	LB2/14
484	E.A1.24.245	Washer, saddle	2	L.40	C	LB2/15
12312	E.A9.24.51	ROD, TAB, CONTROL, OPERATING GEAR, PORT, ASSEMBLY	1	-	A/MR	LB2/16
12316	E.A9.24.52	ROD, TAB, CONTROL, OPERATING GEAR, STARBOARD, ASSEMBLY	1	-	A/MR	LB2/17
	RANSOME/MARLES	Consisting of:-				
2A/9500420	CA1. 5/16"	BEARING, ballrace	1	-	B	LB2/18
12313	E.A9.24.57	BLOCK, anchor, blow-back rod, port	1	-	C	LB2/19
	E.A9.24.58	BLOCK, anchor, blow-back rod, starboard	1	-	-	LB2/20
12314	E.A9.24.61	BOLT, special, torque tube attachment to blow-back rod	6	S.95 or S.96	C	LB2/21
12315	E.A9.24.63	BOLT, special, blow-back rod to bracket attachment	6	S.95 or S.96	C	LB2/22
	E.A9.24.161	ROD, blow-back, port	1	-	-	LB2/23
	E.A9.24.162	ROD, blow-back, starboard	1	-	-	LB2/24
	E.A9.24.55	TUBE, torque, complete, port	1	-	-	LB2/25
	E.A9.24.56	TUBE, torque, complete starboard	1	-	-	LB2/26
28W/9419402	SP13/C	WASHER	12	-	C	LB2/27
		Attaching parts for E.A9.24.51 and E.A9.24.52:-				
28D/1011240	A25/5E	Bolt, 1/4" BSF	2	-	C	LB2/28
28W/9418921	SP13/E	Washer	2	-	C	LB2/29
5029	E.A1.45.987	Washer shim	2	-	C	LB2/30
2625	E.A1.24.917	ROD, TAB, OPERATING, ASSEMBLY	1	-	-	LB2/31
		Spares for:-				
2627	E.A1.24.899	NUT, special, lock	1	S.95	C	LB2/32
28R/13509	CM.28	ROD, end, ball bearing	1	-	B	LB2/33
2626	E.A1.24.919	SOCKET, end, push rod, c/w bearing	1	DTD.683	B	LB2/34
		No. 402259B Ref. 452				
		Attaching parts for E.A1.24.917:-				
457	E.A1.24.963	Bolt, special (tab connection)	1	S.65	C	LB2/35
458	E.A1.24.962	Bolt, special (lever operating)	1	S.65	C	LB2/36
28M/13121	A27/CS	Nut, slotted, 2 BA	2	-	C	LB2/37
10443	E.A1.24.917	Tube, torque	2	-	C	LB2/38
28W/9419475	SP13/C	Washer	1	-	C	LB2/39



AILERON, PORT AND STARBOARD
Restricted

SECT LB

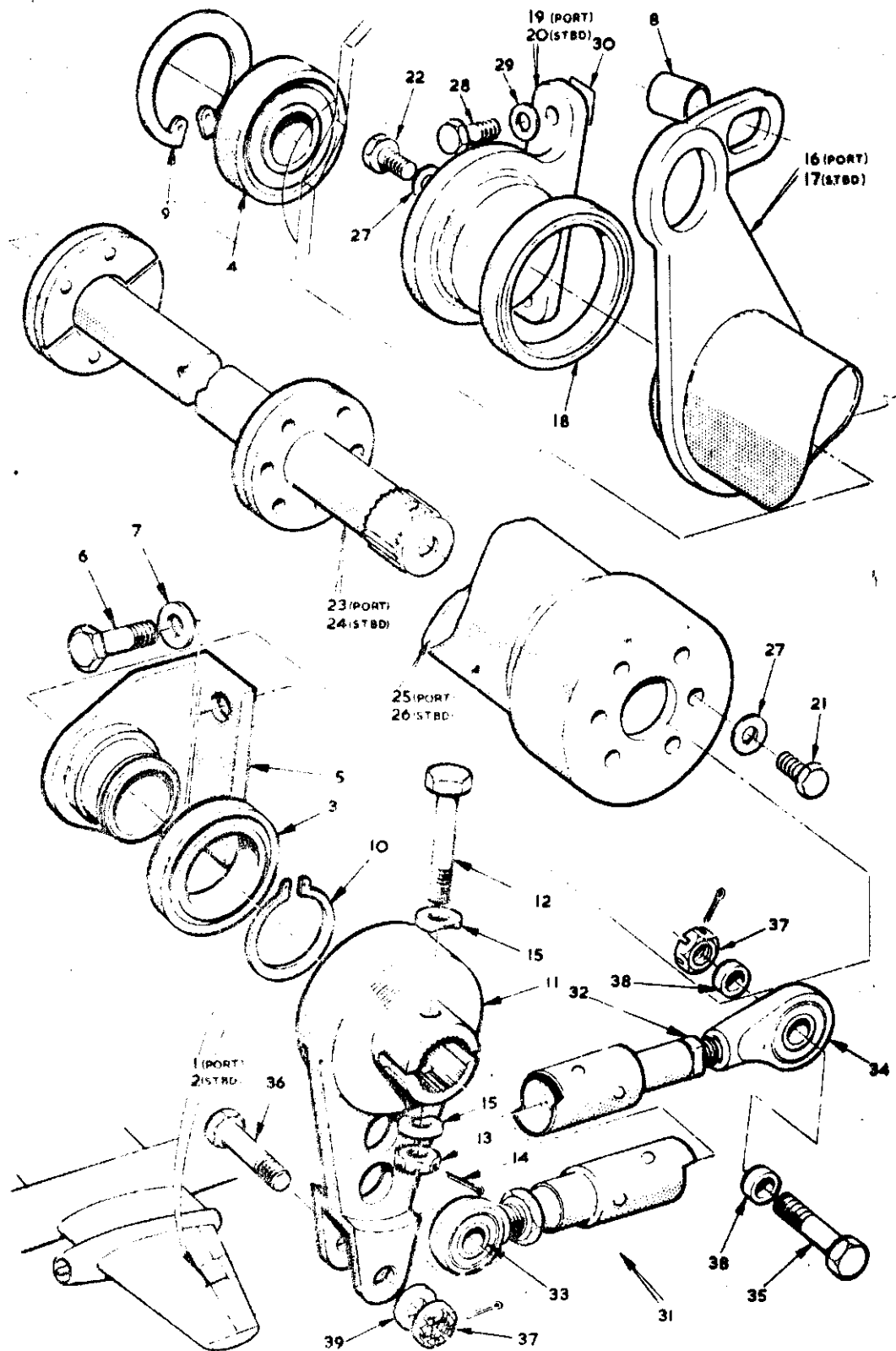


FIG. 2 AILERON, PORT AND STARBOARD

CODE A.R.C.D

SECT. L. 8

MAINPLANE
DOOR, UNDERCARRIAGE, C/W MECHANISM

Ref. No.	Part No.	Description	No. off	Mtrl. Spec.	Cl. of Equip.	Plate No.
					M.R. L.M.	
		1 2 3 4 5 6				
32930	E.A3.00.1053 ✓	DOOR, UNDERCARRIAGE, C/W MECHANISM, PORT ASSEMBLY (Spares condition) (Ref. Drg. E.A1.20.10733)	1	--	A	LC1/1
32931	E.A3.00.1054 ✓	DOOR, UNDERCARRIAGE, C/W MECHANISM & STARBOARD ASSEMBLY (Spares condition) (Ref. Drg. E.A1.20.10734)	1	--	A	LC1/2
	E.A3.00.605 ✓	HINGE, aft of u/c door (Spares condition) Ref. Drg. E.A1.20.1141	1	--	--	LC1/3
28471	E.A3.20.2405 ✓	Attaching parts for E.A3.00.605:- Bolt, special (Make from A25/12C)	5	S.95 or S.96	C	LC1/4
	E.A3.20.937 ✓	Pecking	1	L.72	--	LC1/5
5007	E.A1.20.1379	Shim	1	Laminated Aluminium	C	LC1/6
28W/9419475	SP15/C	Washer	Q.R	--	C	
12237	E.A3.20.3095 ✓	HINGE, forward, u/c door, port	1	DTD.683	C	LC1/7
12239	E.A3.20.3096 ✓	HINGE, forward, u/c door, starboard	1	DTD.683	C	LC1/8
		Attaching parts for E.A3.20.3095 and E.A3.20.3096:-				
28471	E.A3.20.2405 ✓	Bolt, special (Make from A25/12C)	8	S.95 or S.96	C	LC1/9
	E.A3.20.935 ✓	Pecking	2	L.72	--	LC1/10
5006	E.A1.20.1377 ✓	Shim	2	Laminated Aluminium	C	LC1/11
28W/9419475	SP15/C	Washer	QR	--	C	
4147	E.A1.20.1175 ✓	HOUSING, locking pin, aft, port	1	DTD.683	C	LC1/12
4148	E.A1.20.1176 ✓	HOUSING, locking pin, aft, starboard	1	DTD.683	C	LC1/13
		Attaching parts for E.A1.20.1175 and E.A1.20.1176:-				
28D/1200119	A25/4C ✓	Bolt, 2 BA	4	--	C	LC1/14
5025	E.A1.20.3141 ✓	Shim	1	Aluminium Alloy	C	LC1/15
4149	E.A1.20.1183 ✓	HOUSING, locking pin, forward, port	1	DTD.683	C	LC1/16
4150	E.A1.20.1184 ✓	HOUSING, locking pin, forward, starboard	1	DTD.683	C	LC1/17
		Attaching parts for E.A1.20.1183 and E.A1.20.1184:-				
28D/1200119	A25/4C ✓	Bolt, 2 BA	4	--	C	LC1/18
5025	E.A1.20.3143 ✓	Shim	1	Aluminium Alloy	C	LC1/19
38238	E.A9.20.2773 ✓	LEVER, bellcrank, port	1	S.514	C	LC1/20
38237	E.A9.20.2774 ✓	LEVER, bellcrank, starboard	1	S.514	C	LC1/21
		Attaching parts for E.A9.20.2773 and E.A9.20.2774:-				
28M/1011467	A27/ES ✓	Nut, slotted, 1/2" BSF	1	--	C	
378	E.A1.20.2935 ✓	Pin, special	1	DTD.126	C	LC1/22
28W/9418921	SP13/E	Washer	1	--	C	
21492	E.A3.20.1777 ✓	LEVER, door lock operating	1	DTD.683	C	LC1/23
		Attaching parts for E.A3.20.1777:-				
28N/9153394	AGS.899/6	Collar	1	--	C	
28P/1207871	SP/4/Y/F12	Pin, shackle	1	--	C	

LC.2

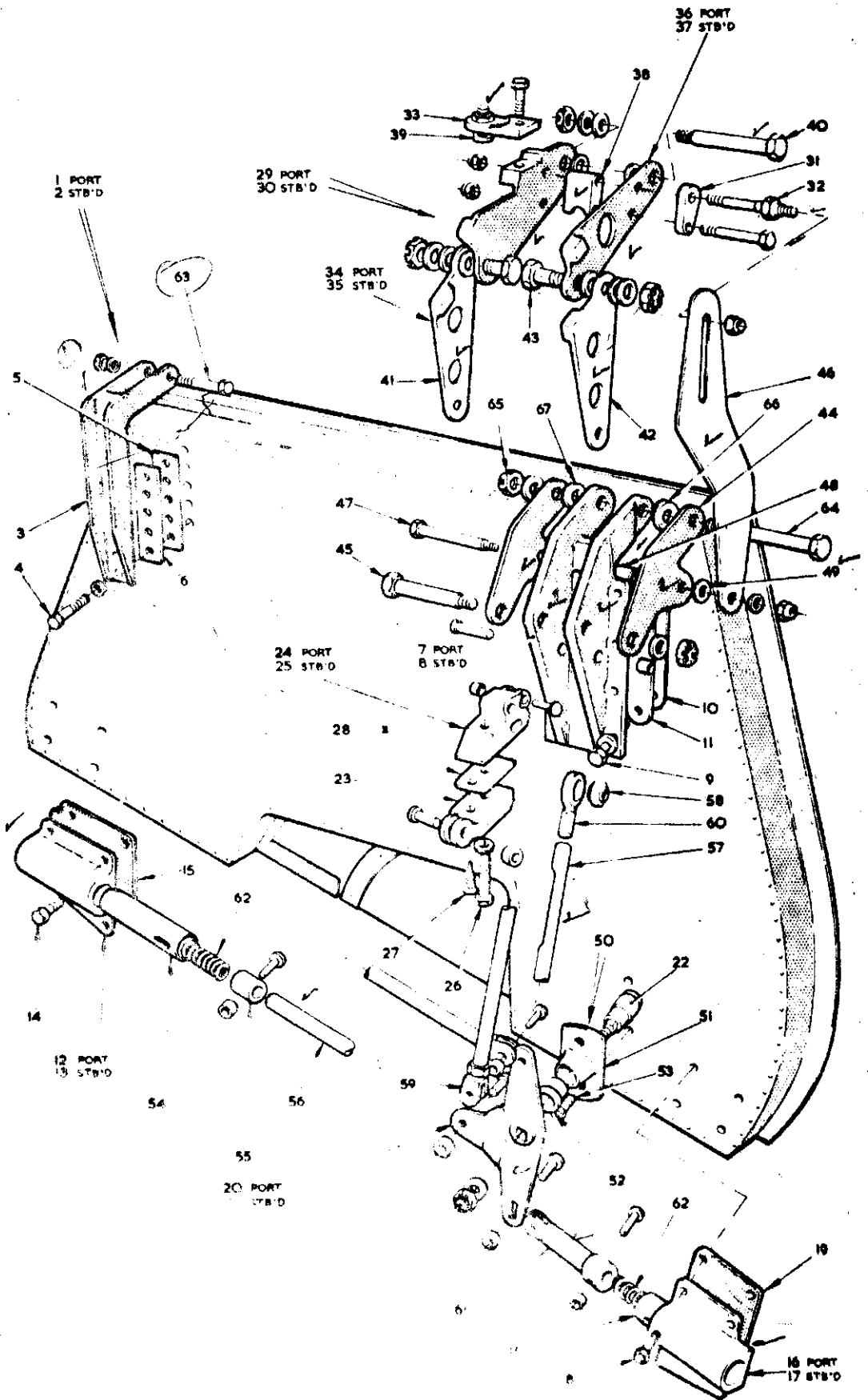
**MAINPLANE
DOOR, UNDERCARRIAGE, C/W MECHANISM**

Ref. No.	Part No.	Description	No. off	Matl. Spec.	Cl. of Equip.	Place No.
					M.R. L.M.	
368	E.A1.20.2363 ✓	LEVER, door lock, operating, port	1	DTD.683	C	LC1/24
369	E.A1.20.2364	LEVER, door lock, operating, starboard	1	DTD.683	C	LC1/25
		Attaching parts for E.A1.20.2363 and E.A1.20.2364:-				
1499	E.A3.20.817	Bolt, special, 5/16" BSF	1	S.97	C	LC1/26
28N/9153394	AGS.899/6	Collar	1	-	C	
28P/1074	SP/4/Y/F22	Pin, shackle	1	-	C	
2099	E.A1.20.2367	Screw, locating	1	S.11	C	LC1/27
382	E.A1.20.2369	Washer, pecking	1	-	C	LC1/28
28W/9416645	SP47/G	Washer, spring	1	-	C	
12110	E.A3.20.3049	LINK, DOOR CHECK, PORT, ASSEMBLY	1	-	B	LC1/29
12111	E.A3.20.3050	LINK, DOOR CHECK, STARBOARD, ASSEMBLY	1	-	B	LC1/30
		Spares for:-				
20966	E.A3.20.3077 ✓	BLOCK, pecking	1	DTD.683	C	LC1/31
20967	E.A3.20.3079 ✓	BOLT, special, eccentric	1	S.97	C	LC1/32
12238	E.A3.20.3071	FINGER, tappet mounting	1	L.40	C	LC1/33
12112	E.A3.20.3047 ✓	LINK, check, port	1	DTD.687	C	LC1/34
12113	E.A3.20.3048	LINK, check, starboard	1	DTD.687	C	LC1/35
12235	E.A3.20.3043	LINK, check, port	1	DTD.683	C	LC1/36
12236	E.A3.20.3044	LINK, check, starboard	1	DTD.683	C	LC1/37
13121	E.A3.20.3073 ✓	PIECE, distance	1	DTD.683	C	LC1/38
20965	E.A3.20.3075	TAPPET	1	S.1	C	LC1/39
		Attaching parts for E.A3.20.3049 and E.A3.20.3050:-				
21080	E.A3.20.3061	Bolt, special	1	S.95	C	LC1/40
28M/5808571	A27/GS	Nut, slotted, 5/16" BSF	1	-	C	
28W/9419403	SP13/G	Washer	1	-	C	
28W/9419466	SP13/J	Washer	1	-	C	
28W/9419477	SP15/J	Washer	2	-	C	
21077	E.A3.20.3045 ✓	LINK, door check, rear	1	DTD.683	C	LC1/41
21078	E.A3.20.3046 ✓	LINK, door check, front	1	DTD.683	C	LC1/42
		Attaching parts for E.A3.20.3045 and E.A3.20.3046:-				
21081	E.A3.20.3063	Bolt, special	2	S.95	C	LC1/43
28M/5808571	A27/GS	Nut, slotted, 5/16" BSF	2	-	C	
28W/9419403	SP13/G	Washer	2	-	C	
28W/9419466	SP13/J	Washer	2	-	C	
28W/9419477	SP15/J	Washer	2	-	C	
20969	E.A3.20.3083 ✓	LINK, side	2	DTD.124	B	LC1/44
		Attaching parts for E.A3.20.3083:-				
21079	E.A3.20.3051	Bolt, special	1	S.95	C	LC1/45
28M/5808571	A27/GS	Nut, slotted, 5/16" BSF	1	-	C	
28W/9419403	SP13/G		1	-	C	
20968	E.A3.20.3081 ✓	LINK, slave	1	DTD.124	B	LC1/46
		Attaching parts for E.A3.20.3081:-				
12200	E.A3.20.3093	Bolt, special	1	S.97	C	LC1/47
28M/1278190	AGS.2001/C/1	Nut, stiff, 2 BA	1	-	C	
20971	E.A3.20.3087	Piece, distance	1	-	C	LC1/48
21679	EEAS.28/15/F P	Washer	1	L.72	C	LC1/49
28W/9419402	SP13/C	Washer	1	-	C	

A B C & D

MAINPLANE
DOOR, UNDERCARRIAGE, C/W MECHANISM

Ref. No.	Part No.	Description	No. off	Matl. Spec.	Cl. of Equip.		Plate No.
					M.R.	L.M.	
38326	E.A9.20.2779 ✓	PEDESTAL, BELLCRANK LEVER, ASSEMBLY Spares for:-	1	-	C		LC1/50
	E.A1.20.1155 ✓	BEARING, bellcrank	1	DTD.683	C		LC1/51
33100	E.A9.20.2775 ✓	BUSH, bearing	1	Oilite	C		LC1/52
28D/9133011	A25/2C ✓	Attaching parts for E.A9.20.2779:- Bolt, 2 BA	2	-	C		LC1/53
38239	E.A9.20.2777 ✓	PIN, locking, undercarriage door Attaching parts for E.A9.20.2777:-	2	S.95	C		LC1/54
28N/1045680	AGS.899/2	Collar	1	-	C		
363	E.A1.20.1179 ✓	Collar, locating	1	L.64	C		LC1/55
28P/840	SP4/Y/B14	Pin, shackle	1	-	C		
13656	E.B8.20.4489 ✓	ROD, tie, aft plunger Attaching parts for E.B8.20.4489:-	1	-	C		LC1/56
28N/1045680	AGS.899/2	Collar	1	-	C		
28P/832	SP4/Y/B6	Pin, shackle	1	-	C		
2097	E.A1.20.10849 ✓	ROD, TIE, BELLCRANK TO OPERATING MECHANISM, ASSEMBLY Spares for:-	1	-	B		LC1/57
379	E.A1.50.75	BEARING, spherical	1	L.65	C		LC1/58
	E.A1.20.10847	FORK-END	1	-	-		LC1/59
1773	E.A1.20.10843 ✓	HOUSING, bearing, rod end Attaching parts for E.A1.20.10849:-	1	S.1	C		LC1/60
28N/1045680	AGS.899/2	Collar	2	-	C		
28P/832	SP4/Y/B6	Pin, shackle	1	-	C		
28P/1207870	SP4/Y/B11	Pin, shackle	1	-	C		
7134	E.A1.20.1159 ✓	ROD, tie, forward plunger Attaching parts for E.A1.20.1159:-	1	DTD.126	C		LC1/61
28N/1045680	AGS.899/2	Collar	1	-	C		
28P/832	SP4/Y/B6	Pin, shackle	1	-	C		
5171	E.A3.20.2271 ✓	SPRING, plunger operating Attaching parts for E.A3.00.1053 and E.A3.00.1054:-	2	-	C		LC1/62
362	E.A1.20.1353	Bolt, special	1	S.96	C		LC1/63
12199	E.A3.20.3085 ✓	Bolt, special	1	-	C		LC1/64
28M/5808573	A27/CS	Nut, slotted, 2 BA	1	-	C		
3569	EEAS.63/E	Nut, 1/4" BSF	1	S.96	C		LC1/65
20972	E.A3.20.3089 ✓	Piece, distance	1	-	C		LC1/66
20973	E.A3.20.3091 ✓	Piece, distance	1	-	C		LC1/67
28W/9419402	SP13/C	Washer	1	-	C		
28W/9419921	SP13/E	Washer	1	-	C		



MECHANISM, PORT & STBD

SECTION C

MAINPLANE

WING TIP

Ref. No.	Part No.	Description	No. off	Matl. Spec.	Cl. of Equip.	Plate No.
					M.R. L.M.	
		1 2 3 4 5 6				
41328	E.A3.00.5174	WING TIP, PORT, ASSEMBLY (Spares condition) (Ref. Drg. E.A1.00.67):-	1	-	A	1 1
41329	E.A3.00.5175	WING TIP, STARBOARD, ASSEMBLY (Spares condition) (Ref. Drg. E.A1.00.68) Spares for:-	1	-	A	1 2
	E.A1.20.1953	STRUCTURE, WING TIP, PORT, ASSEMBLY	-	-	-	1 3
	E.A1.20.1954	STRUCTURE, WING TIP, STARBOARD ASSEMBLY Spares for:-	-	-	-	1 4
4780	E.A3.20.2443	PLATE, blanking, explosive bolt hole	1	DTD.683	C	1 5
3639	E.A1.20.2471	PLATE, locking, explosive bolt hole Attaching parts for E.A3.20.2443 & E.A1.20.2471:-	1	L.72	C	1 6
28S/9435718	A33/C24	Screw, 2BA	1	-	C	1 7
	E.A3.00.5168	WING TIP, CENTRE, PORT, ASSEMBLY (Spares condition) (Ref. Drg. E.A3.20.1023)	1	-	B/MR	1 8
	E.A3.00.5169	WING TIP, CENTRE, STARBOARD ASSEMBLY (Spares condition) (Ref.Drg.E.A3.20.1024) Spares for:-	1	-	B/MR	1 9
3643	E.A3.20.1061	PANEL, access, explosive bolt	1	-	C	1 10
3407	E.A1.20.2399	PANEL, removable fuel and air pipe access, port	1	-	C	1 11
3408	E.A1.20.2400	PANEL, removable, fuel and air pipe access, starboard	1	-	C	1 12
4440	E.A1.20.2395	PANEL, top, access, port	1	-	C	1 13
4441	E.A1.20.2396	PANEL, top, access, starboard Attaching parts for E.A1.20.2395 & E.A1.20.2396:-	1	-	C	1 14
1025	EEAS.1/1C	Screw, 2BA Attaching parts for E.A3.00.5168 & E.A3.00.5169:-	8	S.96	C	1 15
1025	EEAS.1/1C	Screw, 2BA	10	S.96	C	1 16
	E.A3.00.5170	WING, TIP, FORWARD, PORT, ASSEMBLY (Spares condition)(Ref.Drg.E.A1.20.2433)	1	-	B/MR	1 17
	E.A3.00.5171	WING, TIP, FORWARD, STARBOARD, ASSEMBLY (Spares condition)(Ref.Drg.E.A1.20.2434) Spares for:-	1	-	B/MR	1 18
3568	E.A1.20.9151	COVER, navigation light	1	DTD.846	B	1 19
	E.A3.20.3192	PANEL, access, navigation light, port	1	-	-	1 20
	E.A3.20.3191	PANEL, access, navigation light, starboard	1	-	-	1 21
	E.A3.00.5172	WING, TIP, rear, port, assembly (Spares condition)(Ref.Drg.E.A1.20.1955)	1	-	B/MR	1 22
	E.A3.00.5173	WING, TIP, rear, starboard, assembly (Spares condition)(Ref. Drg.E.A1.20.1956) Attaching parts for E.A3.00.743 and E.A3.00.144:-	1	-	B/MR	1 23
1468	FEAS.1/2C	Screw, 2BA	92	S.96	C	1 24

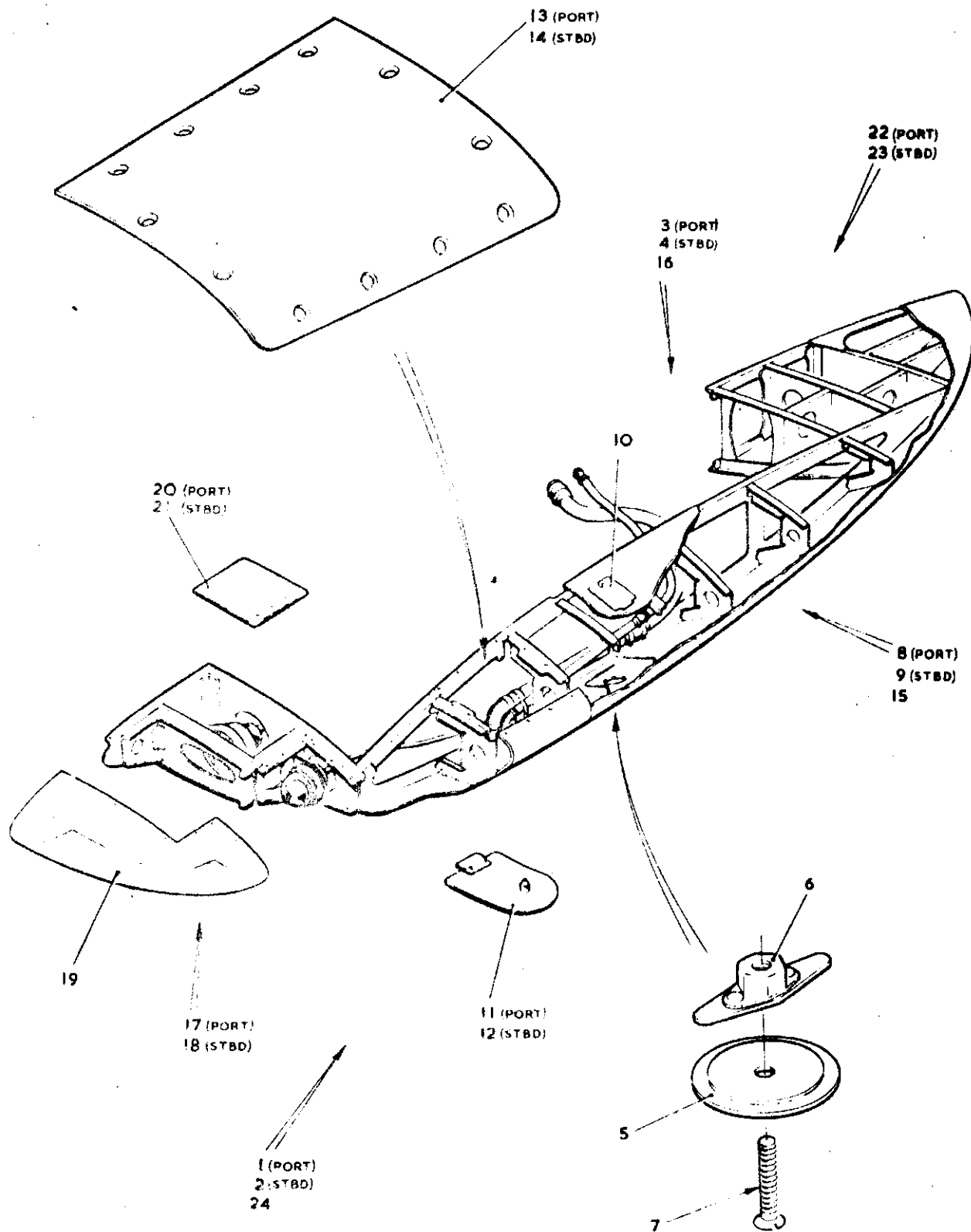


FIG. 1 WING TIP, PORT AND STARBOARD

CODE A.B.C.D

SECT LD

MAINPLANE
WING STRUCTURE

Ref. No.	Part No.	Description	No. off	Mater. Spec.	Cl. of Equip.	Plate No.
					M.R. L.M.	
		1 2 3 4 5 6				
	E.H8.20.1	WING, STRUCTURE, PORT, ASSEMBLY	—	—	—	
	E.H8.20.2	WING, STRUCTURE, STARBOARD, ASSEMBLY	—	—	—	
		Spares for:-				
550	E.A1.20.1329	ANGLE, attachment rear cowl to firewall, port	1	—	C	LE3/1
551	E.A1.20.1330	ANGLE, attachment rear cowl to firewall, stb'd.	1	—	C	LE3/2
		Attaching parts for E.A1.20.1329 and E.A1.20.1330:-				
28D/9133011	A25/2C	Bolt, 2BA	2	—	C	LE3/3
28D/1214091	AS.1242/2C	Bolt, csk. hd 2BA	2	—	C	LE3/4
6377	E.A1.20.1669	Stud	2	—	C	LE3/5
5378	E.A1.20.145	Tube, distance	2	—	C	LE3/6
4319	E.A1.20.1222	BALL JOINT, U/C SIDE STAY ATTACHMENT, PORT, ASSEMBLY	1	—	A/MR	LE8/1
9542	E.A1.20.1224	BALL JOINT, U/C SIDE STAY ATTACHMENT, STARBOARD, ASSEMBLY	1	—	A/MR	LE8/2
		Spares for:-				
583	E.A1.20.1229	BEARING, BALL, SPHERICAL SEATED, ASSEMBLY	1	—	C	LE8/3
		Spares for:-				
584	E.A1.20.1231	BUSH, bearing	2	DTD.197	C	LE8/4
585	E.A1.20.1232	BOLT, special, retaining ring attachment	8	S.11	C	LE8/5
586	E.A1.20.335	BRACKET, attachment, port	1	DTD.683	C	LE8/6
587	E.A1.20.336	BRACKET, attachment, starboard	1	DTD.682	C	LE8/7
6334	E.A3.00.241	BUSH, bearing, port (E.A1.20.1215 and E.A1.20.1217 wired together)	1	DTD.412	C	LE8/8
6335	E.A3.00.242	BUSH, bearing, starboard (E.A1.20.1216 and E.A1.20.1218 wired together)	1	DTD.412	C	LE8/9
592	E.A1.20.1225	DOWEL, special ball bearing locating	2	S.11	C	LE8/10
593	E.A1.20.1235	DOWEL, special retaining ring locating	1	S.11	C	LE8/11
28N/9156370	SP.21	NIPPLE, lubricating	1	—	C	
594	E.A1.20.1219	RING, retaining, bottom	1	DTD.124	C	LE8/12
595	E.A1.20.1221	RING, retaining, top, port	1	DTD.124	C	LE8/13
596	E.A1.20.1222	RING, retaining, top, starboard	1	DTD.124	C	LE8/14
		Attaching parts for E.A1.20.1223 and E.A1.20.1224:-				
28D/1213531	A25/11P	Bolt, 9/16" BSF	2	—	C	LE8/15
19629	E.87.20.79	Bolt, shear	9	S.97	C	LE8/16
19630	E.87.20.81	Bolt, shear	6	S.97	C	LE8/17
19631	E.87.20.85	Bolt, shear	4	S.97	C	LE8/18
28M/1011473	A27/JP	Nut, 3/8" BSF	4	—	C	LE8/19
28M/1007404	A27/JT	Nut, thin, 3/8" BSF	15	—	C	LE8/20
28M/13587	A27/PP	Nut, 9/16" BSF	2	—	C	LE8/21
28W/9419477	SP.15/J	Washer	9	—	C	
28W/9419480	SP.15/P	Washer	2	—	C	
28W/9419489	SP.16/J	Washer	10	—	C	
554	E.A1.20.947	BOLT, special, u/c, attachment bracket	1	S.65	C	LE8/22
555	E.A1.20.949	BOLT, special, u/c, attachment bracket bottom	2	S.65	C	LE8/23
556	E.A1.20.973	BOLT, special, u/c, bracket and aft of rib 6 attachment to main spar	2	S.65	C	LE8/24
557	E.A1.20.1017	BOLT, special, u/c, attachment bracket	4	S.65	C	LE8/25
558	E.A1.20.2297	BOLT, special, u/c, bracket and aft of rib 6 attachment to main spar	2	S.65	C	LE8/26
552	E.A3.20.189	BOLT, special, u/c, attachment bracket, top	2	S.97	C	LE8/27

MAINPLANE
WING STRUCTURE

Ref. No.	Part No.	Description	No. off	Mett. Spec.	Cl. of Equip.	Plate No.
					M.R. L.M.	
		1 2 3 4 5 6				
3409	E.A3.20.1517	BOLT, special, shear, u/c. bracket	6	S.97	C	LE8/28
13221	E.A3.20.3407	BOLT, special, engine cowl attachment to engine ring	22	S.11 or S.105	C	LE8/29
559	E.A1.20.633	BOSS AND LEVERS, AILERON CONTROL HINGE ON RIB 4, OUTER WING, PORT, ASSEMBLY (See page DD.1)	1	-	B	
560	E.A1.20.634	BOSS AND LEVERS, AILERON CONTROL HINGE ON RIB 4, OUTER WING, STARBOARD, ASSEMBLY (See Page DE 1)	1	-	B	
561	E.A1.20.531	BRACKET, u/c. jack attachment, port	1	-	C	LE8/30
562	E.A1.20.532	BRACKET, u/c. jack attachment, starboard	1	-	C	LE8/31
		Attaching parts for E.A1.20.531 and E.A1.20.532:-				
28D/7002427	A25/6G	Bolt, 5/16" BSF	6	-	C	LE8/32
28D/1011258	A25/8G	Bolt, 5/16" BSF	3	-	C	LE8/33
28D/1018884	A25/9G	Bolt, 5/16" BSF	4	-	C	LE8/34
28M/10291	AGS.2001/G/1	Nut, stiff, 5/16" BSF	6	-	C	LE8/35
28M/10331	AGS.2002/G/1	Nut, stiff, 5/16" BSF	7	-	C	LE8/36
28W/9419476	SP.15/G	Washer	4	-	C	
28W/9419488	SP.16/G	Washer	9	-	C	
563	E.A1.20.2983	BRACKET, u/c. attachment stub, port	1	-	C	LE8/37
564	E.A1.20.2984	BRACKET, u/c. attachment stub, starboard	1	-	C	LE8/38
		Attaching parts for E.A1.20.2983 and E.A1.20.2984:-				
28D/1010031	A25/RE	Bolt, 1/2" BSF	4	-	C	LE8/39
28D/1011302	A25/10J	Bolt, 3/8" BSF	2	-	C	LE8/40
28M/1011475	A27/EP	Nut, 1/2" BSF	4	-	C	LE8/41
28M/1011473	A27/JP	Nut, 3/8" BSF	2	-	C	LE8/42
581	E.A1.20.2987	Pin, special	1	-	C	
28W/9419405	SP.15/E	Washer	4	-	C	
28W/9419489	SP.16/J	Washer	2	-	C	
9639	E.A3.20.2497	BRACKET, SHOOT BOLT ON U/C. DOOR, PORT ASSEMBLY	1	-	C	LE8/43
9640	E.A3.20.2498	BRACKET, SHOOT BOLT ON U/C. DOOR, STARBOARD, ASSEMBLY	1	-	C	LE8/44
		Spares for:-				
6105	E.A3.20.2275	PAD, port	1	-	C	LE8/45
6106	E.A3.20.2276	PAD, starboard	1	-	C	LE8/46
		Attaching parts for E.A3.20.2275 and E.A3.20.2276:-				
28M/1278190	AGS.2001/C/1	Nut, stiff, 2BA	3	-	C	LE8/47
1468	EEAS.1/2C	Screw, 2BA	3	S.96	C	LE8/48
28W/9419402	SP.13/C	Washer	-	-	C	
		Attaching parts for E.A3.20.2497 and E.A3.20.2498:-				
28D/1200119	A25/4C	Bolt, 2BA	2	-	C	LE8/49
28M/9403520	A27/CP	Nut, 2BA	2	-	C	LE8/50
	E.A1.20.2223	Plate, washer	2	-	-	LE8/51
	E.A1.20.2655	COWLING, REMOVABLE, JET PIPE END, PORT, ASSEMBLY	1	-	MR	LE3/7
	E.A1.20.2656	COWLING, REMOVABLE, JET PIPE END, STARBOARD, ASSEMBLY	1	-	MR	LE3/8
		Spares for:-				
2956	E.A1.20.8261	CONE, jet end	1	-	B	LE3/9
		Attaching parts for E.A1.20.8261:-				
28D/1007982	AS.1248/1C	Bolt, mush. hd. 2BA	18	-	C	LE3/10

MAINPLANE
WING STRUCTURE

Ref. No.	Part No.	Description	No. off	Matl. Spec.	Cl. of Equip.		Plate No.
					M.R.	L.M.	
	E.A3.20.3413	GENERATOR VORTEX PORT, ASSEMBLY	1	—	—	—	
	E.A3.20.3414	GENERATOR VORTEX STARBOARD, ASSEMBLY	1	—	—	—	
		Spares for:-					
26671	E.A3.20.3411	GENERATOR, vortex	2	L.72	C	—	LE5/1
565	E.A1.20.1157	MOUNTING JET PIPE, ASSEMBLY	2	—	C	—	LE3/11
		Spares for:-					
	E.A1.20.1135	BLOCK	1	—	—	—	LE3/12
22243	E.A1.20.1133	BOLT, eccentric	1	—	C	—	LE3/13
14838941	E.A1.20.1137	NUT	1	—	C	—	LE3/14
42431	E.A1.20.1139	WASHER, locking	1	—	C	—	LE3/15
		Attaching parts for E.A1.20.1157:-					
28D/1212594	A25/33E	Bolt, 1/4" BSF	2	—	C	—	LE3/16
28M/7002430	AGS.2002/E/1	Nut, stiff, 1/4" BSF	2	—	C	—	LE3/17
28W/9419405	SP.15/E	Washer	2	—	C	—	
2983	E.A1.20.263	NACELLE, ENGINE LOWER AFT, PORT, ASSEMBLY	1	—	A	—	LE3/18
3208	E.A1.20.264	NACELLE, ENGINE LOWER AFT, STARBOARD, ASSEMBLY	1	—	A	—	LE3/19
3027	E.A1.20.261	NACELLE, ENGINE UPPER AFT	1	—	A	—	LE3/20
5162	E.A3.20.1809	NUT, special	2	S.80	C	—	LE5/2
5163	E.A3.20.1811	NUT, special	2	S.80	C	—	LE5/3
1433	E.A3.20.355	PANEL, closing bottom skin between ribs 1 and 7 inner wing, port	1	—	—	—	LE5/4
1434	E.A3.20.356	PANEL, closing bottom skin between ribs 1 and 7, inner wing, starboard	1	—	C	—	LE5/5
577	E.A1.20.2233	PANEL, closing bottom skin between ribs 1 and 3, outer wing, port	1	—	C	—	LE5/6
578	E.A1.20.2234	PANEL, closing bottom skin between ribs 1 and 3, outer wing, starboard	1	—	C	—	LE5/7
	E.C7.20.1101	PANEL, closing bottom skin between ribs 2 and 4 outer wing, port	1	—	—	—	LE5/8
	E.C7.20.1102	PANEL, closing bottom skin between ribs 2 and 4, outer wing, starboard	1	—	—	—	LE5/9
1431	E.A3.20.313	PANEL, closing bottom skin between ribs 4 and 8, outer wing, port	1	—	C	—	LE5/10
1432	E.A3.20.314	PANEL, closing bottom skin between ribs 4 and 8 outer wing, starboard	1	—	C	—	LE5/11
3019	E.A1.20.2289	PANEL ACCESS ASSEMBLY	1	—	C	—	LE5/12
		Attaching parts for E.A1.20.2289:-					
1026	EEAS.1/11C	Screw, 2BA	16	—	C	—	LE5/13
1468	EEAS.1/2C	Screw, 2BA	6	—	C	—	LE5/14
	E.A9.20.2761	PANEL, access	1	—	—	—	LE5/15
		Attaching parts for E.A9.20.2761:-					
	EEAS.1/11G	Screw	14	—	—	—	LE5/16
37327	E.A9.20.2769	PANEL, access, port	1	—	C	—	LE5/17
37328	E.A9.20.2770	PANEL, access, starboard	1	—	C	—	LE5/18
		Attaching parts for E.A9.20.2769 and E.A9.20.2770:-					
	EEAS.1/11G	Screw	14	—	—	—	LE5/19
	E.B6.20.1301	PANEL ACCESS ASSEMBLY, PORT	1	—	—	—	LE5/20
	E.B6.20.1302	PANEL ACCESS ASSEMBLY, STARBOARD	1	—	—	—	LE5/21
		Attaching parts for E.B6.20.1301 and E.B6.20.1302:-					
1026	EEAS.1/11C	Screw, 2BA	16	—	C	—	LE5/22
1468	EEAS.1/2C	Screw, 2BA	4	—	C	—	LE5/23

**MAINPLANE
WING STRUCTURE**

Ref. No.	Part No.	Description	No. off	Mati. Spec.	Cl. of Equip.	Plate No.
					M.R. L.M.	
		1 2 3 4 5 6				
9446	E.A1.20.203	. RING, rear cowl false spar connecting Attaching parts for E.A1.20.203:-	1	-	C/MR	LE3/21
28D/9140644	A25/9C	. Bolt, 2BA	20	-	C	LE3/22
28M/9433473	AGS.2002/C/1	. Nut, stiff, 2BA	20	-	C	LE3/23
28W/9419475	SP.15/C	. Washer	20	-	C	
1026	EEAS.1/1½C	. Screw, 2BA	QR	-	C	
1468	EEAS.1/2C	. Screw, 2BA	QR	-	C	
1565	EEAS.1/¾C	. Screw, 2BA	QR	-	C	
6675	E.A3.20.363	. SHROUD, inboard aileron centre hinge	1	-	B	LE1/1
6652	E.A3.20.365	. SHROUD, outboard aileron centre hinge	1	-	B	LE1/2
9633	E.A3.20.1183	. SHROUD, inboard aileron hinge, port	1	-	B	LE1/3
9634	E.A3.20.1184	. SHROUD, inboard, aileron hinge, starboard	1	-	B	LE1/4
	E.H8.20.11	. SPAR, MAIN PORT, ASSEMBLY	1	-	MR	
	E.H8.20.12	. SPAR, MAIN STARBOARD, ASSEMBLY	1	-	MR	
5003	E.A1.20.1327	. SK'D, main u/c. hinged flap, operating	1	-	C	
597	E.A1.20.2981	. STRUT, undercarriage tie, between jack attachment bracket and side stay, port	-	-	C	LE8/52
598	E.A1.20.2982	. STRUT, undercarriage tie, between jack attachment bracket and side stay, starboard	1	-	C	LE8/53
		Attaching parts for E.A1.20.2981 and E.A1.20.2982:-				
28D/1212173	A57/16L	. Bolt, sheer, 7/16" BSF	2	-	C	LE8/54
28D/1212176	A57/8N	. Bolt, sheer, ½" BSF	1	-	C	LE8/55
28M/15199	A58/JS	. Nut, 7/16" BSF	2	-	C	LE8/56
28M/14555	A58/NS	. Nut, ½" BSF	1	-	C	LE8/57
28P/9527619	SP.90/C7	. Pin, split	3	-	C	
28W/9419478	SP.15/L	. Washer	2	-	C	
28W/9419491	SP.16/N	. Washer	1	-	C	
599	E.A1.20.2989	. STUD, special, undercarriage, jack attachment, bracket end	1	S.11	C	LE8/58
		Attaching parts for E.A1.20.2989:-				
1874	E.A3.20.897	. Pin, special	1	S.92	C	LE8/59
601	E.A1.20.2295	. WASHER, undercarriage bracket top bolt	2	S.11	C	LE8/60
602	E.A1.20.2327	. WASHER, undercarriage bracket bottom, bolt	2	S.11	C	LE8/61
600	E.A1.20.2991	. WASHER, undercarriage jack attachment bracket end	1	DTD.126	C	LE8/62
5164	E.A3.20.1057	. WASHER, undercarriage bracket	9	L.40	C	LE8/63
1438963	EEAS.6/B	. WASHER, cup, 90°	QR	DTD.124A	-	
1438964	EEAS.6/E	. WASHER, cup, 90°	QR	DTD.124A	C	
1438965	EEAS.6/G	. WASHER, cup, 90°	QR	DTD.124A	C	
1438966	EEAS.6/J	. WASHER, cup, 90°	QR	DTD.124A	C	
1438967	EEAS.7/C	. WASHER, cup, 90°	QR	DTD.124A	C	
1438968	EEAS.7/E	. WASHER, cup, 120°	QR	DTD.124A	C	
1438969	EEAS.7/G	. WASHER, cup, 120°	QR	DTD.124A	C	
1438970	EEAS.7/L	. WASHER, cup, 120°	QR	DTD.124A	C	

MAINPLANE
WING STRUCTURE

Ref. No.	Part No.	Description	No. off	Mtrl. Spec.	Cl. of Equip.		Plate No.
					M.R.	L.M.	
		1 2 3 4 5 6					
	E.H8.20.5	WING, CENTRE, AFT OF SPAR, PORT, ASSEMBLY	-	-	-	-	
	E.H8.20.6	WING, CENTRE, AFT OF SPAR, STARBOARD, ASSEMBLY	-	-	-	-	
	E.H8.20.47	BRACKET, aerial mounting, rib 4 and 6 Attaching parts for E.H8.20.47:-	2	-	-	-	LE5/23
28D/1011252	A25/54/E	Bolt, 1/2" BSF	2	-	-	C	LE5/24
28M/9480017	AGS 2001/E/1	Nut, 1/2" BSF	2	-	-	C	LE5/25
28W/9418921	SP.15/E	Washer	2	-	-	C	
	F.B8.20.3129	BLOCK	1	-	-	-	LE5/26
	F.B8.20.3131	BLOCK	1	-	-	-	
		Attaching parts for F.B8.20.3129 and E.H8.20.3131:-					
28D/9132448	A25/12B	Bolt, hex hd 4BA	3	-	-	C	LE5/27
28M/1278189	AGS.2001/B/1	Nut, stiff, 4BA	3	-	-	C	LE5/28
28W/9419474	SP.15/B	Washer, 4BA	3	-	-	C	
	E.H8.20.17	LEVER, CONTROL, AILERON CENTRE WING ON RIB NO.4, INSTALLATION, PORT	-	-	-	-	
	E.H8.20.19	LEVER, CONTROL, AILERON CENTRE WING ON RIB NO.4, INSTALLATION, STARBOARD	-	-	-	-	
		Spares for:-					
619	E.A1.20.641	ARM, LEVER, C/W BOSS, ASSEMBLY Spares for:-	1	-	-	C	LE1/5
	E.A1.20.639	ARM, lever Attaching parts for E.A1.20.639:-	1	-	-	C	LE1/6
28D/9133011	A25/2C	Bolt, 2BA	3	-	-	C	LE1/7
28M/9403520	A27/CP	Nut, 2BA	3	-	-	C	LE1/8
28W/9419475	SP.15/C	Washer	3	-	-	C	
2A/9500412	SKEFCO-C95.3	BALLRACE	2	-	-	C	LE1/9
	E.A1.20.607	BOSS Attaching parts for E.A1.20.607:-	1	L.40	-	-	LE1/10
	E.A1.20.609	Bolt,	1	L.40	-	C	LE1/11
28M/13451	A29/JS	Nut, 3/8" BSF	1	-	-	C	LE1/12
28P/9527619	SP.90/C7	Pin, split	1	-	-	C	
28W/9419477	SP.15/J	Washer	1	-	-	C	
	E.A1.20.643	BRACKET, mounting aileron lever, port	1	-	-	-	LE1/13
	E.A1.20.644	BRACKET, mounting aileron lever, stb'd.	1	-	-	-	LE1/14
9547	E.A1.20.465	BRACKET, wall aileron lever brackets, port	2	-	-	C	LE1/15
	E.A1.20.681	STAY, side aileron lever bracket	1	-	-	-	LE1/16
	E.A1.20.219	MEMBER, TORQUE, REAR WALL, PORT ASSEMBLY	-	-	-	-	
	E.A1.20.8271	MEMBER, TORQUE, REAR WALL, STARBOARD ASSEMBLY Spares for:-	-	-	-	-	
34347	E.A1.20.7075	ANGLE, attachment, port	1	-	-	C	
24850	E.A1.20.7079	ANGLE, attachment, port	1	-	-	C	
1438536	E.A1.20.8005	ANGLE, attachment, starboard	1	-	-	C/MR	
7205	E.A1.20.751	BRACKET, LEVER ASSEMBLY Spares for:-	1	-	-	B/MR	LE4/1
15907	E.A1.20.761	BRACKET, lever	1	-	-	C	
2954	E.A1.20.771	BUSH	1	S.15	-	C	

**MAINPLANE
WING STRUCTURE**

Ref. No.	Part No.	Description	No. off	Matl. Spec.	Cl. of Equip.		Plate No.
					M.R.	L.M.	
		1 2 3 4 5 6					
5702	E.A1.20.735	LEVER, BELLCRANK FLAP OPERATION GROUP Consisting of:-	1	-	B		LE4/2
5203	E.A1.25.65	BOLT, special	1	S.11	C		LE4/3
15902	E.A1.20.739	BUSH	1	DTD.265	C		LE4/4
15903	E.A1.20.741	BUSH	1	DTD.265	C		LE4/5
15905	E.A1.20.745	BUSH	1	DTD.265	C		LE4/6
15900	E.A1.20.737	LEVER, bellcrank	1	DTD.683	C		LE4/6
28N/9156370	SP.21	NIPPLE, lubricating	1	-	C		
28M/1011476	A27JS	NUT, 3/8" BSF	1	-	C		LE4/7
28P/19228	SP.90/CB	PIN, split	1	-	C		
	E.A1.20.743	WASHER, special	2	L.1	C		LE4/8
549	EEAS.5	WASHER, fibre	1	BSS.216	C		
21603	EEAS.28/37E.U	WASHER, special, 18 SWG	1	DTD.124	C		LE4/9
15906	E.A1.20.749	SPINDLE LEVER	1	-	C		LE4/10
		Spares for: (Repair)					
40970	ASD.514.RS/1	WASHER, special, 22 SWG	-	S.520	C		
40971	ASD.514.RS/2	WASHER, special, 24 SWG	-	S.520	C		
39022	ASD.514.RS/3	WASHER, special, 26 SWG	-	S.520	C		
39023	ASD.514.RS/4	WASHER, special, 28 SWG	-	S.520	C		
39024	ASD.514.RS/5	WASHER, special, 30 SWG	-	S.520	C		
	E.A1.20.3159	BRACKET, LEVER, ASSEMBLY, PORT ONLY	1	-	-		LE4/11
		Spares for:-					
15907	E.A1.20.761	BRACKET, lever	1	-	C		
2954	E.A1.20.771	BUSH	1	S.15	C		
27003	E.A1.20.3135	LEVER, BELLCRANK C/W LUG FLAP OPERATION GROUP, PORT, ONLY Consisting of	1	-	B		LE4/12
		Consisting of					
5203	E.A1.25.65	BOLT, special	1	S.11	C		LE4/3
15902	E.A1.20.739	BUSH	1	DTD.265	C		LE4/4
15903	E.A1.20.741	BUSH	1	DTD.265	C		LE4/5
15905	E.A1.20.745	BUSH	1	-	-		LE4/6
	E.A1.20.3137	LEVER, bellcrank	1	DTD.683	C		LE4/13
	AGS.554	NIPPLE, lubricating	1	-	C		
	A.16.YJS	NUT, 3/8" BSF	1	-	C		LE4/14
	AGS.16613	PIN, split	1	-	C		
15904	E.A1.20.743	WASHER, special	2	L.1	C		LE4/9
549	EEAS.5	WASHER, fibre	1	BSS.216	C		
21603	EEAS.28/37E.U	WASHER, special, 18 SWG	1	DTD.124	C		
15906	E.A1.20.749	SPINDLE LEVER	1	-	C		LE4/10
		Spares for: (Repair)					
40970	ASD.514.RS/1	WASHER, special, 22 SWG	-	S.520	C		
40971	ASD.514.RS/2	WASHER, special, 24 SWG	-	S.520	C		
39022	ASD.514.RS/3	WASHER, special, 26 SWG	-	S.520	C		
39023	ASD.514.RS/4	WASHER, special, 28 SWG	-	S.520	C		
39024	ASD.514.RS/5	WASHER, special, 30 SWG	-	S.520	C		
19518	E.A1.20.321	BUSH	1	-	C		LE4/15
	E.H8.20.155	PANEL ACCESS, INSTALLATION, PORT ONLY	-	-	-		
		Spares for:-					
	E.H8.20.159	PANEL, access	1	-	-		LE5/29
		Attaching parts for E.H8.20.159:-					
		Bolt, 2BA	18	-	C		LE5/30
28D/1214034	AS.1242/2C	PANEL ACCESS, PORT, ASSEMBLY	-	-	-		
	E.A9.20.1393	PANEL ACCESS, STARBOARD, ASSEMBLY	-	-	-		
	E.A9.20.1394	PANEL ACCESS, STARBOARD, ASSEMBLY	-	-	-		
		Spares for:-					
	E.A9.20.1395	PANEL, access	1	-	-		LE5/31
		Attaching parts for E.A9.20.1395:-					
1026	EEAS.1/1½C	Bolt, 2BA	12	-	C		LE5/32

MAINPLANE
WING STRUCTURE

Ref. No.	Part No.	Description	No. off	Mtl. Spec.	Cl. of Equip.	Plate No.
					M.R. L.M.	
		1 2 3 4 5 6				
	E.H8.20.153	PANEL, AERIAL INSTALLATION, PORT	—	—	—	
	E.H8.20.154	PANEL, AERIAL INSTALLATION, STB'D	—	—	—	
		Spares for:-				
5660	E.A3.20.1947	PANEL, access, electrically transparent	1	Lam. Glass Cloth	C	LE5/33
		Attaching parts for E.A3.20.1947:-				
5658	E.B6.20.123	Bolt, special	16	S.96	C	LE5/34
5659	E.B6.20.125	Bolt, special	92	S.96	C	LE5/35
	E.H8.20.157	SHROUD, FLAP, PORT, ASSEMBLY	1	—	—	LE4/16
	E.A3.20.2608	SHROUD, FLAP, STARBOARD, ASSEMBLY	1	—	—	LE4/17
		Spares for:-				
9402	E.A3.20.2513	PANEL, access	1	L.72	C/MR	LE4/18
9403	E.A3.20.2515	PANEL, access	1	L.72	C/MR	LE4/19
		Attaching parts for E.A3.20.2513 & E.A3.20.2515:-				
1025	EEAS.1/1C	Screw, 2BA	14	S.96	C	LE4/20
4757	E.A3.20.1977	STOP, flap	8	—	C	LE4/21
17746	E.A3.00.229	WING EXTENSION, PORT ASSEMBLY (E.A1.20.1865)	1	—	B/MR	LE5/36
17747	E.A3.00.230	WING EXTENSION, STB'D. ASSEMBLY (E.A1.20.1866)	1	—	B/MR	LE5/37
		Spares for:-				
6053	E.A1.20.1977	PANEL, access	1	—	C	LE5/38
		Attaching parts for E.A1.20.1977:-				
4307	EEAS.2/1½C	Screw, 2BA	12	S.96	C	LE5/39
3638	E.A1.20.2473	PLATE, blanking, explosive bolt holes	2	—	C	LE5/40
3639	E.A1.20.2471	PLATE, locking, explosive bolt holes	2	—	C	LE5/41
		Attaching parts for E.A1.20.2473 & E.A1.20.2471:- (Per Pair)				
28S/9435718	A33/C24	Screw, 2BA	1	—	C	LE5/42
	E.A1.20.1873	SKIN TOP, PORT, ASSEMBLY	—	—	—	
	E.A1.20.1874	SKIN TOP, STARBOARD, ASSEMBLY	—	—	—	
		Spares for:-				
3647	E.A3.20.1063	PANEL, access explosive bolt	1	—	C	LE6/1
3646	E.A3.20.1065	PANEL, access explosive bolt	1	—	C	LE6/2
19591	E.A3.20.879	STOP BOLT	1	—	C	LE6/3
	E.H8.20.3	WING, INNER LEADING EDGE, PORT ASSEMBLY	—	—	—	
	E.H8.20.4	WING, INNER LEADING EDGE, STARBOARD ASSEMBLY	—	—	—	
		Spares for:-				
9183	E.A1.20.1349	BLOCK, stop, undercarriage	1	L.40	C	LE7/1
		Attaching parts for E.A1.20.1349:-				
28D/12841	A25/29E	Bolt, ¼" BSF	3	—	C	LE7/2
9185	E.A1.20.3149	Cradle, stop, assembly	1	—	C	LE7/3
28M/1011467	A27/ES	Nut, ¼" BSF	3	—	C	LE7/4
28P/1007741	SP.9/C8	Pin, split	3	—	C	
28P/12364	SP.9/G6	Pin, split	2	—	C	
9184	E.A1.20.1355	Shim	1	L.72	C	LE7/5
6166	E.A3.20.1007	Shim	1	—	C	LE7/6
28W/9419487	SP.16/E	Washer	3	—	C	
603	E.A1.20.1251	BOLT, special undercarriage "up" lock hook pivot	1	S.65	C	LE7/7
	E.A1.20.1369	BOLT, locking "up" lock pivot bolt	1	—	—	LE7/8
	or					
28S/9435712	A37/B8	SCREW	1	—	C	

MAINPLANE
WING STRUCTURE

Ref. No.	Part No.	Description	No. off	Matl. Spec.	Cl. of Equip.	Plate No.
					M.F. L.M.	
9241	E.A3.20.1153	BRACKET, undercarriage "up" lock, port	1	DTD.683	C	LE7/9
9243	E.A3.20.1154	BRACKET, undercarriage "up" lock, stb'd	1	DTD.683	C	LE7/10
28D/1011300	A25/7J or	Bolt, 3/8" BSF	3	-	C	LE7/11
28D/1011301	A25/8J	Bolt, 3/8" BSF	3	-	C	
28D/1213011	AS.1242/7J or	Bolt, 3/8" BSF	1	-	C	LE7/12
28D/1212898	AS.1242/8J	Bolt, 3/8" BSF	1	-	C	
28M/1011473	A27/JP	Nut, 3/8" BSF	3	-	C	LE7/13
28M/10292	AGS.2001/J/1	Nut, 3/8" BSF	1	-	C	LE7/14
18513	E.A3.20.2969	Shim	1	L.72	C	LE7/15
28W/9419489	SP.16/J	Washer	3	-	C	
	E.A1.20.1249	BRACKET, tension spring attachment, port	1	-	-	LE7/16
	E.A1.20.1250	BRACKET, tension spring attachment, stb'd	1	-	-	LE7/17
	or					
	E.A1.20.1365	BRACKET, tension spring attachment, port	1	-	-	
	E.A1.20.1366	BRACKET, tension spring attachment, stb'd	1	-	-	
		Attaching parts for E.A1.20.1249, E.A1.20.1250, E.A1.20.1365 & E.A1.20.1366:-				
28D/9133012	A25/3C	Bolt, 2BA	2	-	C	LE7/18
28M/1006473	A27/CT	Nut, 2BA	2	-	C	LE7/19
28W/9419475	SP.15/C	Washer	2	-	C	
	E.H8.20.33	BRACKET, MAIN UNDERCARRIAGE AND RIB 7 PORT, ASSEMBLY	-	-	-	LE7/20
	E.H8.20.34	BRACKET, MAIN UNDERCARRIAGE AND RIB 7 STARBOARD, ASSEMBLY	-	-	-	LE7/21
		Spares for -				
34702	E.A3.20.5063	BRACKET, main forging, port	1	-	B	LE7/22
34703	E.A3.20.5064	BRACKET, main forging, starboard	1	-	B	LE7/23
9198	E.A1.20.1665	BRACKET, side forging, port	1	-	B	LE7/24
4968	E.A1.20.1666	BRACKET, side forging, starboard	1	-	B	LE7/25
		Attaching parts for E.A3.20.5063, E.A3.20.5064, E.A1.20.1665 & E.A1.20.1666:- (Per Pair)				
28D/1212684	A25/22L	Bolt, 7/16" BSF	1	-	C	LE7/26
28D/1011314	A25/23L	Bolt, 7/16" BSF	1	-	C	LE7/27
28D/1212775	A25/9N	Bolt, 1/2" BSF	6	-	C	LE7/28
28M/13553	A27/LP	Nut, 7/16" BSF	2	-	C	LE7/29
28M/1011477	A27/NP	Nut, 1/2" BSF	6	-	C	LE7/30
28W/9419478	SP.15/L	Washer	2	-	C	
28W/9419491	SP.16/N	Washer	6	-	C	
9202	E.A1.20.1937	EYE-BOLT, port	1	-	C	LE7/31
4971	E.A1.20.1938	EYE-BOLT, starboard	1	-	C	LE7/32
25789	E.A3.20.183	PLATE, tie support, upper, port (Supplied to Drg. E.A3.00.665 for spares purposes)	1	DTD.687	C	LE7/33
25790	E.A3.20.184	PLATE, tie support, upper, starboard (Supplied to Drg. E.A3.00.666 for spares purposes)	1	DTD.687	C	LE7/34
		Attaching parts for E.A3.20.183 & E.A3.20.184:-				
6077	E.A3.20.1151	Bolt, special	1	-	C	LE7/36
28D/1202771	A25/4G	Bolt, 5/16" BSF	12	-	C	LE7/36
28D/1011256	A25/5G	Bolt, 5/16" BSF	14	-	C	LE7/37

MAINPLANE
WING STRUCTURE

Ref. No.	Part No.	Description	No. off	Matl. Spec.	Cl. of Equip.	Plate No.
					M.R. L.M.	
		1 2 3 4 5 6				
28M/1011470	A27/GT	Nut, 5/16" BSF	26	-	C	LE7/38
	E.A3.20.1123	Strip, packing, port	1	-	-	LE7/39
	E.A3.20.1124	Strip, packing, starboard	1	-	-	LE7/40
28W/9419488	SP.16/G	Washer	14	-	C	
13100	E.A3.20.185	PLATE, tie support lower, port (Supplied to Drg. No. E.A3.00.635 for spares purposes)	1	-	C	LE7/41
13101	E.A3.20.186	PLATE, tie support lower, starboard (Supplied to Drg. No. E.A3.00.636 for spares purposes)	1	-	C	LE7/42
1967	E.A3.20.1121	Attaching parts for E.A3.20.185 & E.A3.20.186:- Bolt, special	1	-	C	LE7/43
28D/1011268	A25/5G	Bolt, 5/16" BSF	11	-	C	LE7/44
28D/1011258	A25/8G	Bolt, 5/16" BSF	18	-	C	LE7/45
28D/1212201	A57/9G	Bolt, shear, 5/16" BSF	3	-	C	LE7/46
28M/1011470	A27/GT	Nut, 5/16" BSF	32	-	C	LE7/47
	E.A3.20.2303	Tab, locking	1	-	-	
28W/9419488	SP.16/G	Washer	32	-	C	
28W/9419489	SP.16/J	Washer	1	-	C	
27110	E.A3.20.171	RIB NO.7 INBOARD ENGINE, PORT, ASSEMBLY (Supplied to Drg. No. E.A3.00.779 for spares purposes)	1	-	B/MR	LE7/48
27111	E.A3.20.172	RIB NO.7 INBOARD ENGINE, STARBOARD, ASSEMBLY (Supplied to Drg. No. E.A3.00.780 for spares purposes)	1	-	B/MR	LE7/49
		Spares for:-				
17976	E.A1.20.6933	ROOM RIB INBOARD L/E PORT, ASSEMBLY	1	-	C/MR	
17977	E.A1.20.6934	ROOM RIB INBOARD L/E STB'D, ASSEMBLY	1	-	C/MR	
9105	E.A1.20.349	BRACKET, toggle fastener	1	-	MR	LE7/50
9106	E.A1.20.350	BRACKET, toggle fastener	1	-	MR	LE7/51
17791	E.A1.20.351	BRACKET, toggle fastener	1	-	MR	LE7/52
		Attaching parts for E.A1.20.349, E.A1.20.350 and E.A1.20.351:-				
28D/1200119	A25/3C	Bolt, 2BA	4	-	C	LE7/53
28W/9419404	SP.16/C	Washer	4	-	C	
17823	E.A1.20.917	BRACKET, toggle fastener	1	-	MR	LE7/54
17824	E.A1.20.918	BRACKET, toggle fastener	1	-	MR	LE7/55
		Attaching parts for E.A1.20.917 & E.A1.20.918:-				
28D/1200119	A25/4C	Bolt, 2BA	4	-	C	LE7/56
28W/9419404	SP.16/C	Washer	4	-	C	
	E.A1.20.353	BRACKET, toggle fastener	1	-	MR	LE7/57
		Attaching parts for E.A1.20.353:-				
28D/9133012	A25/3C	Bolt, 2BA	6	-	C	LE7/58
17868	E.A1.20.3245	Washer, special	6	-	C	
18376	E.A3.20.2587	PLATE, packing spring No.1 and 2, top and bottom boom	4	-	MR	LE7/59
18378	E.A3.20.2595	PLATE, packing spring No.4, top boom	1	-	MR	LE7/60
18377	E.A3.20.2591	PLATE, packing spring No.5, bottom boom	1	-	MR	LE7/61
	E.A3.20.2589	PLATE, packing spring No.5, top boom and spring No.4 bottom boom	2	-	MR	LE7/62
28FP/341	S.51325	SPRING, Dzus	10	-	C	

**MAINPLANE
WING STRUCTURE**

Ref. No.	Part No.	Description	No. off	Mtrl. Spec.	Cl. of Equip.	Plate No.
					M.R. L.M.	
		1 2 3 4 5 6				
9241	E.A3.20.1153	BRACKET, undercarriage 'up' lock	1	DTD.683	C	LE7/63
4623	E.A1.75.7	COOLER, air (port only)	1	—	C	LE7/64
	E.A1.20.1047	DIAPHRAGM, INNER WING LEADING EDGE, PORT, ASSEMBLY	1	—	—	LE7/65
	E.A1.20.10609	DIAPHRAGM, INNER WING LEADING EDGE, STARBOARD, ASSEMBLY	1	—	—	LE7/66
	E.A1.20.8387	Spares for:				
	E.A1.20.8387	BOOM, bottom, port	1	—	—	
1439234	E.A1.20.10613	BOOM, bottom, starboard	1	—	—	
1438650	E.A1.20.8385	BOOM, top, port	1	—	B/MR	
1438930	E.A1.20.8386	BOOM, top, starboard	1	—	—	
19520	E.A1.20.1081	WASHER, plate bevel packing, port	1	L.40	C	
21605	E.A1.20.1082	WASHER, plate bevel packing, starboard	1	L.40	C	
19521	E.A1.20.1083	WASHER, plate bevel packing, port	1	L.40	C	
21606	E.A1.20.1084	WASHER, plate bevel packing, starboard	1	L.40	C	
	E.B7.20.271	FOOT, mounting, auxiliary gear box	2	—	—	
	E.B7.20.272	FOOT, mounting, auxiliary gear box	2	—	—	
6368	E.A3.20.2573	HOOK UNDERCARRIAGE 'UP' LOCK ASSEMBLY	1	—	C	LE7/67
		Spares for:				
606	E.A1.20.1243	BUSH, bearing	2	DTD.412	C	LE7/68
	E.A1.20.2571	HOOK	1	S.65	—	
		Attaching parts for E.A3.20.2573:				
603	E.A1.20.1251	Bolt, special	1	S.65	C	LE7/69
	E.A1.20.1369	Bolt, locking (Alternative to A31/B8)	1	—	—	
28M/1011476	A27/JS	Nut, 3/8" BSF	1	—	C	LE7/70
28P/9527619	SP.90/C7	Pin, split	1	—	C	
28S/9435712	A31/B8	Screw (Alternative to E.A1.20.1369)	1	—	C	
5024	E.A1.20.2447	Shim	2	—	C	LE7/71
28W/9419466	SP.13/J	Washer	1	—	C	
3033	E.A1.20.1343	PANEL, nose detachable inner wing, leading edge (Supplied to Drg. No. E.A3.00.237 for spares purposes)	1	—	C	LE8/4
5657	E.B7.20.123	PANEL, REMOVABLE INNER WING LEADING EDGE, TOP, PORT, ASSEMBLY	1	—	B	LE6/5
5663	E.B7.20.124	PANEL, REMOVABLE INNER WING LEADING EDGE, TOP, STARBOARD, ASSEMBLY	1	—	B	LE6/6
		Spares for:				
6085	E.A1.20.8289	COVER, inspection	1	L.72	C	LE6/7
22337	E.B7.20.271	COVER, DIPSTICK ACCESS, 2 SPEED GENERATOR DRIVE, ASSEMBLY	1	—	—	LE6/8
		Spares for:				
	†	CHAIN, chancelier	QR	Brass	LM	
	E.B7.20.273	COVER, assembly	1	—	—	LE6/9
	E.B7.20.275	HOUSING, ASSEMBLY	1	—	—	LE6/10
		Spares for:				
	PIONEER					
	OIL SEAL					
	CO.LTD.					
	PO.14311813	RING 'O' sealing 1" x 1.71 i/d.	1	DTD.900	C	LE6/11
29H/4291	†	RING, split, 3/8" i/d.	2	—	C	LE6/12
28FP/9539060	Dzus.F4/30	FASTENER	4	—	C	
28FP/66	Dzus.F3/25DS	FASTENER	4	—	C	
28FP/68	Dzus.F3/30DS	FASTENER	10	—	C	
28FP/9527578	Dzus.S3/200	SPRING	14	—	C	
28FP/332	Dzus.S4/3	SPRING	4	—	C	

MAINPLANE
WING STRUCTURE

Ref. No.	Part No.	Description	No. off	Mtrl. Spec.	Cl. of	Plate No.
					Equip. M.R. L.M.	
		1 2 3 4 5 6				
6993	E.B6.20.477	PANEL, REMOVABLE INNER WING LEADING EDGE TOP PORT, ASSEMBLY	1	—	B	LE6/13
		Spares for:-				
12340	E.B6.20.479	COVER, cold air unit	1	L.72	C	LE6/14
28FP/9539060	Dzus.F4/30	FASTENER	4	—	C	
28FP/9483371	Dzus.GF4/150	GROMMET	4	—	C	
28FP/332	Dzus.S4/3	SPRING	4	—	C	
13214	E.B7.20.295	PANEL, REMOVABLE ribs 1 and 2, port Attaching parts for E.B7.20.295:-	1	—	B	LE5/43
1026	EEAS.1/2C	Screw, 2BA	30	—	C	
28M/1278190	AGS.2001/C/1	Nut, 2BA	30	—	C	
28W/9419475	SP.15/C	Washer	30	—	C	
3032	E.A1.20.1120	PANEL, removable inner wing leading edge top, starboard. Undrilled and with trim allowance Supplied to Part No. E.A3.00.5124 for spares purposes	1	—	C	LE6/15
41038	E.A2.20.233	SKIN, OUTER PORTION, BOTTOM INNER WING LEADING EDGE, PORT ASSEMBLY	1	—	—	
	E.A2.20.235	SKIN, OUTER PORTION, BOTTOM INNER WING LEADING EDGE, STARBOARD ASSEMBLY	1	—	—	
		Spares for:-				
17865	E.A1.20.3191	COVER, oil sump	1	—	C	LE5/44
9235	E.A1.20.7053	SKIN, BOTTOM ASSEMBLY, STB'D Spares for:-	1	—	C/MR	LE5/45
18308	E.A3.20.909	STOP, door	1	DTD.683	C	LE5/46
638	E.A1.20.1247	SPRING, tension, undercarriage hook Attaching parts for E.A1.20.1247:-	1	—	C	LE7/72
28D/9133012	A25/3C	Bolt, 2BA	1	—	C	LE7/73
28D/1200119	A25/4C	Bolt, 2BA	1	—	C	LE7/74
28M/1278190	AGS.2001/C/1	Nut, 2BA	2	—	C	LE7/75
1060	EEAS.27/22HR	Washer	2	—	C	
9185	E.A1.20.3149	STOP, undercarriage 'up' lock	1	—	C	LE7/76

MAINPLANE
WING STRUCTURE

Ref. No.	Part No.	Description	No. off	Mtl. Spec.	Cl. of Equip.	Plate No.
					M.R. L.M.	
		1 2 3 4 5 6				
	E.H8.20.7	WING, OUTER, AFT OF SPAR C/W AIR BRAKE PORT, ASSEMBLY	-	-	-	
	E.H8.20.8	WING, OUTER, AFT OF SPAR C/W AIR BRAKE STARBOARD, ASSEMBLY Spares for:-	-	-	-	
	E.C7.20.1007	CASTING PYLON INSTALLATION AND RIB 3, PORT, ASSEMBLY	-	-	-	LE9/1
	E.C7.20.1008	CASTING PYLON INSTALLATION AND RIB 3, STARBOARD, ASSEMBLY Spares for:-	-	-	-	LE9/2
	E.A1.20.2973	BRACKET, forward hydraulic pipe attachment, port	1	L.72	-	LE9/3
	E.A1.20.2974	BRACKET, forward hydraulic pipe attachment, starboard	1	L.72	-	LE9/4
28D/94119452	A25/38	Attaching parts for E.A1.20.2973 & E.A1.20.2974:-	4	-	C	LE9/5
28M/10287	AGS.2001/B/1	Bolt, 4BA	4	-	C	LE9/6
28W/9419474	SP.15/B	Nut, 4BA	4	-	C	
		Washer	4	-	C	
	E.A1.20.2975	BRACKET, aft, hydraulic pipe, attachment Attaching parts for E.A1.20.2975:-	1	L.72	-	LE9/7
28D/9140638	A25/4B	Bolt, 4BA (top)	2	-	C	LE9/8
28D/1011006	A25/5B	Bolt, 4BA (bottom)	2	-	C	LE9/9
28M/10287	AGS.2001/B/1	Nut, 4BA	4	-	C	LE9/10
25024	E.A9.20.1075	Washer, taper (top)	2	-	C/MR	LE9/11
	E.A9.20.1077	Washer, taper (bottom)	2	-	C/MR	LE9/12
	E.B6.20.877	CASTING, rib 3, for pylon suspension, port	1	L.53	-	LE9/13
	E.B6.20.878	CASTING, rib 3, for pylon suspension, starboard Attaching parts for E.B6.20.877 & E.B6.20.878:-	1	L.53	-	LE9/14
28D/1214806	A59/4C	Bolt, 2BA	42	-	C	LE9/15
28D/1214808	A59/5C	Bolt, 2BA	8	-	C	LE9/16
28D/1215658	A59/3C	Bolt, 2BA	2	-	C	LE9/17
28D/1215662	A59/6C	Bolt, 2BA	8	-	C	LE9/18
28D/1215663	A59/7C	Bolt, 2BA	4	-	C	LE9/19
28D/1007978	AS.1242/7C	Bolt, 2BA	6	-	C	LE9/20
28D/1215686	A59/7E	Bolt, 1/4" BSF	8	-	C	LE9/21
28D/1212376	AS.1248/7E	Bolt, 1/4" BSF	2	-	C	LE9/22
28D/1212378	AS.1248/9E	Bolt, 1/4" BSF	2	-	C	LE9/23
28M/1278190	AGS.2001/C/1	Nut, 2BA	70	-	C	LE9/24
40048	EEAS.1/4/C	Screw, 2BA	3	-	C	LE9/25
38061	EEAS.1/5/C	Screw, 1/4" BSF		-	C	LE9/26
6219	EEAS.1/6/E	Screw, 1/4" BSF	1	-	C	LE9/27
40052	EEAS.1/7/C	Screw, 5/16" BSF	16	-	C	LE9/28
39979	E.B6.20.127	Shim, complete nylon to spar wing (if required)	1	Lam.Alum.	LM	LE9/29
28W/9419475	SP.15/C	Washer	70	-	C	

MAINPLANE
WING STRUCTURE

Ref. No.	Part No.	Description	No. off	Mati. Spec.	Cl. of Equip.	Plate No.
					M.R. L.M.	
		1 2 3 4 5 6				
	EEAS.36/10	. . . CLIP, tubular conduit support Attaching parts for EEAS.36/10:-	1	-	-	LE9/30
28D/1007979	AS.1246/18	. . . Bolt, 4BA	1	-	C	LE9/31
28M/1278189	AGS.2001/B/1	. . . Nut, 4BA	1	-	C	LE9/32
28W/9419474	SP.15/B	. . . Washer	1	-	C	
25060	E.A9.20.1325	. . . PLATE, crutching tool access Attaching parts for E.A9.20.1325:-	1	-	C	LE9/33
25061	E.A9.20.1337	. . . Bolt	1	-	C	LE9/34
	†	. . . Chain, chandelier, 6" long	1	Brass	LM	
29H/4290	†	. . . Ring, split, 3/4" i/d.	2	Brass	C	
12320	E.B6.20.637	. . . PLATE, cover, pylon aperture, port	1	L.72	C	LE9/35
12327	E.B6.20.638	. . . PLATE, cover, pylon aperture, starboard	1	L.72	C	LE9/36
	E.C7.20.1039	. . . PLATE, reinforcing, port	1	-	-	LE9/37
	E.C7.20.1040	. . . PLATE, reinforcing, starboard Attaching parts for E.B6.20.637, E.B6.20.638, E.C7.20.1039 and E.C7.20.1040 (See attaching parts for E.B6.20.677 and E.B6.20.878 on Page LE.12)	1	-	-	LE9/38
	E.A1.20.55	. . . RIB NO.3 TRAILING EDGE PORT, ASSEMBLY	1	-	-	LE9/39
	E.A1.20.56	. . . RIB NO.3 TRAILING EDGE STB'D, ASSEMBLY Spares for:-	1	-	-	LE9/40
	E.A1.20.2189	. . . BOLT, adjuster, airbrake roller	1	-	-	LE9/41
32574	E.A1.20.7021	. . . BOOM, bottom, port	1	-	C/MR	
21735	E.A1.20.7022	. . . BOOM, bottom, starboard	1	-	C/MR	
	E.A1.20.2195	. . . BRACKET, adjuster airbrake roller Attaching parts for E.A1.20.2195:-	1	-	-	LE9/42
	E.A1.20.2187	. . . Bolt	1	-	-	LE9/43
40267	E.A1.20.2227	. . . Bush, spacing	1	-	-	LE9/44
28M/1011467	A27/ES	. . . Nut, 3/4" BSF	1	-	C	LE9/45
28W/9419487	SP.16/E	. . . Washer	1	-	C	
40265	E.A1.20.2191	. . . ROLLER, adjuster, airbrake Attaching parts for E.A1.20.2191:-	1	-	C	LE9/46
	E.A1.20.2183	. . . Bolt	1	-	-	LE9/47
40269	E.A1.20.2939	. . . Bush, spacing	1	-	C	LE9/48
28M/5808571	A27/GS	. . . Nut, 5/16" BSF	1	-	C	LE9/49
28W/9419488	SP.16/G	. . . Washer	1	-	C	
40266	E.A1.20.2193	. . . ROLLER, airbrake Attaching parts for E.A1.20.2193:-	2	-	C	LE9/50
40270	E.A1.20.2185	. . . Bolt	1	-	C	LE9/51
40268	E.A1.20.2229	. . . Bush, spacing	1	-	C	LE9/52
28M/5808571	A27/GS	. . . Nut, 5/16" BSF	1	-	C	LE9/53
28W/9419488	SP.16/G	. . . Washer	1	-	C	

**MAINPLANE
WING STRUCTURE**

Ref. No.	Part No.	Description	No. off	Mater. Spec.	Cl. of Equip.	Plate No.
					M.R. L.M.	
		1 2 3 4 5 6				
	E.A1.20.2139	CHANNEL, drag, bottom, No.1 from inboard port (Make from Ref.20795)	1	—	LM	
	E.A1.20.2140	CHANNEL, drag, bottom, No.1 from inboard starboard (Make from Ref.20795)	1	—	LM	
	E.A1.20.2143	CHANNEL, drag, bottom, No.2 from inboard port (Make from Ref.20795)	1	—	LM	
	E.A1.20.2144	CHANNEL, drag, bottom, No.2 from inboard starboard (Make from Ref.20795)	1	—	LM	
	E.A1.20.2145	CHANNEL, drag, bottom No.3 from inboard port (Make from Ref.20795)	1	—	LM	
	E.A1.20.2146	CHANNEL, drag, bottom, No.3 from inboard starboard (Make from Ref.20795)	1	—	LM	
	E.A1.20.2149	CHANNEL, drag, bottom, No.4 from inboard port (Make from Ref.20795)	1	—	LM	
	E.A1.20.2150	CHANNEL, drag, bottom, No.4 from inboard starboard (Make from Ref.20795)	1	—	LM	
	E.A1.20.2151	CHANNEL, drag, bottom No.5 from inboard port (Make from Ref.20795)	1	—	LM	
	E.A1.20.2152	CHANNEL, drag, bottom, No.5 from inboard starboard (Make from Ref.20795)	1	—	LM	
	E.A1.20.2155	CHANNEL, drag, bottom No.6 from inboard port (Make from Ref.20795)	1	—	LM	
	E.A1.20.2156	CHANNEL, drag, bottom No.6 from inboard starboard (Make from Ref.20795)	1	—	LM	
	E.A1.20.2157	CHANNEL, drag, bottom No.7 from inboard port (Make from Ref.6613)	1	—	LM	
	E.A1.20.2158	CHANNEL, drag, bottom No.7 from inboard starboard (Make from Ref.6613)	1	—	LM	
	E.A1.20.2161	CHANNEL, drag, bottom, No.8 from inboard port (Make from Ref.6613)	1	—	LM	
	E.A1.20.2162	CHANNEL, drag, bottom, No.8 from inboard starboard (Make from Ref.6613)	1	—	LM	
	E.A1.20.2163	CHANNEL, drag, bottom No.9 from inboard port (Make from Ref.6613)	1	—	LM	
	E.A1.20.2164	CHANNEL, drag, bottom No.9 from inboard starboard (Make from Ref.6613)	1	—	LM	
	E.A1.20.2167	CHANNEL, drag, bottom, No.10 from inboard port (Make from Ref.6613)	1	—	LM	
	E.A1.20.2168	CHANNEL, drag, bottom, No.10 from inboard starboard (Make from Ref.6613)	1	—	LM	
	E.A1.20.2169	CHANNEL, drag, bottom, No.11 from inboard port (Make from Ref.6613)	1	—	LM	
	E.A1.20.2170	CHANNEL, drag, bottom, No.11 from inboard starboard (Make from Ref.6613)	1	—	LM	
	E.A1.20.2173	CHANNEL, drag, bottom No.12 from inboard port (Make from Ref.6613)	1	—	LM	
	E.A1.20.2174	CHANNEL, drag, bottom, No.12 from inboard starboard (Make from Ref.6613)	1	—	LM	
	E.A1.20.2109	CHANNEL, drag, top, No.1 from inboard port (Make from Ref.20795)	1	—	LM	
	E.A1.20.2110	CHANNEL, drag, top, No.1 from inboard starboard (Make from Ref.20795)	1	—	LM	
	E.A1.20.2115	CHANNEL, drag, top, No.2 from inboard port (Make from Ref.20795)	1	—	LM	
	E.A1.20.2118	CHANNEL, drag, top No.2 from inboard starboard (Make from Ref.20795)	1	—	LM	
	E.A1.20.2119	CHANNEL, drag, top, No.3 from inboard port (Make from Ref.20795)	1	—	LM	
	E.A1.20.2120	CHANNEL, drag, top, No.3 from inboard starboard (Make from Ref.20795)	1	—	LM	

MAINPLANE
WING STRUCTURE

Ref. No.	Part No.	Description	No. off	Mater. Spec.	Cl. of	Plate No.
					Equip. M.R. L.M.	
		1 2 3 4 5 6				
	E.A1.20.2121	CHANNEL, drag, top, No.4 from inboard port (Make from Ref.6613)	1	-	LM	
	E.A1.20.2122	CHANNEL, drag, top, No.4 from inboard starboard (Make from Ref.6613)	1	-	LM	
	E.A1.20.2125	CHANNEL, drag, top, No.5 from inboard port (Make from Ref.6613)	1	-	LM	
	E.A1.20.2126	CHANNEL, drag, top, No.5 from inboard starboard (Make from Ref.6613)	1	-	LM	
	E.A1.20.2127	CHANNEL, drag, top, No.6 from inboard port (Make from Ref.6613)	1	-	LM	
	E.A1.20.2128	CHANNEL, drag, top, No.6 from inboard starboard (Make from Ref.6613)	1	-	LM	
	E.A1.20.2131	CHANNEL, drag, top, No.7 from inboard port (Make from Ref.6613)	1	-	LM	
	E.A1.20.2132	CHANNEL, drag, top, No.7 from inboard starboard (Make from Ref.6613)	1	-	LM	
	E.A1.20.2133	CHANNEL, drag, top, No.8 from inboard port (Make from Ref.6613)	1	-	LM	
	E.A1.20.2134	CHANNEL, drag, top, No.8 from inboard starboard (Make from Ref.6613)	1	-	LM	
	E.A1.20.2137	CHANNEL, drag, top, No.9 from inboard port (Make from Ref.6613)	1	-	LM	
	E.A1.20.2138	CHANNEL, drag, top, No.9 from inboard starboard (Make from Ref.6613)	1	-	LM	
		Attaching parts for channel drag:				
621	E.A1.20.3147	Nut, special	2	DTD.683	C	LE2/1
9613	E.A1.20.2207	COVER, drag channel end	18	-	C/MR	LE2/2
4330	E.A1.20.2209	COVER, drag channel end	18	-	C/MR	LE2/3
	E.A3.20.253	FRAME, AIR BRAKE RIB 2-2B, ASSEMBLY	1	-	-	LE2/4
		Spares for:-				
20806	E.A1.20.2057	CROSSHEAD, drag-channel	1	DTD.683	B/MR	LE2/5
		Attaching parts for E.A1.20.2057:-				
28M/10320	AGS.2002/E/3	Nut, 1/4" BSF	2	-	C	LE2/6
28W/9419405	SP.15/E	Washer	2	-	C	
	E.A3.20.255	PLATE SIDE, ASSEMBLY	2	-	MR	LE2/7
		Spares for:-				
17847	E.A1.20.2065	HOUSING, bearing assembly	1	-	C/MR	LE2/8
20805	E.A1.20.2055	TUBE, bracing	1	-	C/MR	LE2/9
	E.A1.20.2069	FRAME AIR BRAKE RIB 2-3 ASSEMBLY	2	-	MR	LE2/10
		Spares for:-				
	E.A1.20.2057	CROSSHEAD, drag-channel	2	DTD.683	B/MR	LE2/5
		Attaching parts for E.A1.20.2057:-				
28M/10320	AGS.2002/E/3	Nut, 1/4" BSF	2	-	C	LE2/6
28W/9419405	SP.15/E	Washer	2	-	C	
	E.A1.20.2045	PLATE SIDE ASSEMBLY	2	-	MR	LE2/11
		Spares for:-				
17847	E.A1.20.2065	HOUSING, bearing assembly	2	-	C/MR	LE2/8
20805	E.A1.20.2055	TUBE, bracing	2	-	B/MR	LE2/9
	E.A3.20.263	FRAME AIRBRAKE RIB 3-3B, PORT, ASSEMBLY	1	-	MR	LE2/12
	E.A3.20.264	FRAME, AIR BRAKE RIB 3-3B, STB'D, ASSEMBLY	1	-	MR	LE2/13
		Spares for:-				
20806	E.A1.20.2057	CROSSHEAD, drag channel	2	DTD.683	B/MR	LE2/5
		Attaching parts for E.A1.20.2057:-				
28M/10320	AGS.2002/E/3	Nut, 1/4" BSF	2	-	C	LE2/6
28W/9419405	SP.15/E	Washer	2	-	C	

MAINPLANE
WING STRUCTURE

Ref. No.	Part No.	Description	No. off	Mtrl. Spec.	Cl. of Equip.	Plate No.
					M.R. L.M.	
		1 2 3 4 5 6				
	E.A1.20.2047	PLATE SIDE, ASSEMBLY Spares for:-	1	-	MR	LE2/14
17847	E.A1.20.2065	HOUSING, bearing, assembly	2	-	C/MR	LE2/8
	E.A3.20.261	PLATE SIDE, PORT, ASSEMBLY	1	-	-	LE2/15
	E.A3.20.262	PLATE SIDE, STARBOARD, ASSEMBLY Spares for:-	1	-	-	LE2/16
9755	E.A1.20.2075	BUSH, jack lever, attachment	1	-	C	LE2/17
17847	E.A1.20.2065	HOUSING, bearing assembly	2	-	C/MR	LE2/18
	E.A3.20.259	LEVER, jack operating Attaching parts for E.A3.20.259:-	1	-	-	LE2/19
28D/12100	AGS.571/403	Bolt, 1/2" BSF	9	-	-	LE2/20
28M/13403	AGS.572/AP	Nut, 1/2" BSF	9	-	-	LE2/21
28W/9419405	SP.15/E	Washer	18	-	-	
	E.A1.20.2077	TUBE, bracing	2	-	MR	LE2/22
	E.A1.20.2071	FRAME, AIR BRAKE, RIB 3B-4, ASSEMBLY Spares for:-	2	-	MR	LE2/23
20806	E.A1.20.2057	CROSSHEAD, drag-channel Attaching parts for E.A1.20.2057:-	2	DTD.683	B/MR	LE2/6
28M/10320	AGS.2002/E/3	Nut, 1/2" BSF	2	-	C	LE2/6
28W/9419405	SP.15/E	Washer	2	-	C	
	E.A1.20.2047	PLATE SIDE, ASSEMBLY Spares for:-	2	-	MR	LE2/14
	E.A1.20.2065	HOUSING, bearing assembly	2	-	C/MR	LE2/8
	E.A1.20.2077	TUBE, bracing Attaching parts for E.A3.20.253:- E.A3.20.263, E.A3.20.264, E.A1.20.2069 and E.A1.20.2071:-	2	-	MR	LE2/22
1092	EEAS.37/9A	Nipple, 2BA	8	S.11	C	
1096	EEAS.37/15A	Nipple, 2BA	8	S.11	C	
1571	EEAS.38/2A	Spoke, 2BA (Make from Ref. 28R/6124)	4	S.11	LM	
1139	E.A3.20.367	HINGE, AILERON CENTRE, ASSEMBLY Spares for:-	1	-	B	LE1/17
21110	E.A1.20.325	BRACKET, aileron, centre hinge Attaching parts for E.A1.20.325:-	1	DTD.683	C	LE1/18
616	E.A1.20.511	Bolt, special	1	S.11	C	LE1/19
617	E.A1.20.1433	Nut, special (Make from A27/CT)	1	-	C	LE1/20
1430	E.A3.20.375	Washer, special	2	DTD.683	C	
5247	E.A1.20.693	BRACKET, aileron shroud angle attachment Attaching parts for E.A1.20.693:-	2	-	C	LE1/21
28D/1200119	A25/4C	Bolt, 2BA	2	-	C	LE1/22
28M/5808573	A27/CS	Nut, 2BA	2	-	C	LE1/23
6143	E.A1.20.1097	Shim	2	-	C	LE1/24
	E.A3.20.371	FITTING CENTRE-HINGE, ASSEMBLY Spares for:-	1	-	-	LE1/25
2A/9500417	RANSOME & MAPLES CK.5.87 AGS.2000/57	BALL RACE SCROLLS, internal Attaching parts for E.A3.20.367:- So. 3/8" BSF	1 1 4	- - -	B C C	LE1/26 LE1/27 LE1/28
28D/1011304	A25/15C	Bolt, 3/8" BSF	4	-	C	LE1/28
9564	E.A1.20.2091	HOUSING, ball race airbrake cross tube assembly Attaching parts for E.A1.20.2091:-	2	-	C/MR	LE2/24
28D/1212940	AGS.2000/57	Bolt, 2BA	6	-	C	LE2/25

MAINPLANE
WING STRUCTURE

Ref. No.	Part No.	Description	No. off	Mater. Spec.	Cl. of Equip.	Plate No.
					M.R. L.M.	
	E.A1.20.373	MEMBER, TORQUE REAR WALL, PORT, ASSEMBLY	-	-	-	
	E.A1.20.374	MEMBER, TORQUE REAR WALL, STARBOARD, ASSEMBLY	-	-	-	
		Spares for:-				
9559	E.A3.20.2079	BRACKET, aileron, hinge, inboard	1	DTD.300	B/MR	LE1/29
17799	E.A1.20.425	BRACKET, flap, shroud rib 4BA, port	1	-	C/MR	
17800	E.A1.20.426	BRACKET, flap, shroud rib 4BA, stb'd	1	-	C/MR	
17842	E.A1.20.1753	BRACKET, flap, shroud rib 3B, outer, port	1	-	C/MR	
17801	E.A1.20.430	BRACKET, flap, shroud, rib 3B outer, stb'd	1	-	C/MR	
17817	E.A1.20.659	BRACKET, flap, shroud, rib 3B inner, port	1	-	C/MR	
18364	E.A3.20.2301	BRACKET, flap, shroud, rib 3B inner, stb'd	1	-	C/MR	
17815	E.A1.20.657	BRACKET, flap, shroud, rib 3, port	1	-	C/MR	
17816	E.A1.20.658	BRACKET, flap, shroud, rib 3, stb'd	1	-	C/MR	
17813	E.A1.20.629	BRACKET, flap, shroud, rib 2B, port	1	-	C/MR	
17814	E.A1.20.630	BRACKET, flap, shroud, rib 2B, stb'd	1	-	C/MR	
18363	E.A3.20.2299	BRACKET, flap, shroud, rib 2 outer, port	1	-	C/MR	
17818	E.A1.20.661	BRACKET, flap, shroud, rib 2 outer, stb'd	1	-	C/MR	
17795	E.A1.20.395	BRACKET, flap, shroud, rib 2 inner, port	1	-	C/MR	
17796	E.A1.20.396	BRACKET, flap, shroud, rib 2 inner, stb'd	1	-	C/MR	
17797	E.A1.20.413	BRACKET, flap, shroud, rib 2A, port	1	-	C/MR	
17798	E.A1.20.414	BRACKET, flap, shroud, rib 2A, stb'd	1	-	C/MR	
17819	E.A1.20.753	BRACKET, LEVER, PORT, ASSEMBLY	1	-	B	LE4/22
17820	E.A1.20.755	BRACKET, LEVER, STARBOARD, ASSEMBLY	1	-	B	LE4/23
		Spares for:-				
15908	E.A1.20.763	BRACKET, lever, port	1	-	C	
15909	E.A1.20.765	BRACKET, lever, starboard	1	-	C	
2954	E.A1.20.771	BUSH	1	-	C	
5202	E.A1.20.735	LEVER BELLCRANK, FLAP OPERATION, ASSEMBLY	1	-	B	LE4/24
		Spares for:-				
5203	E.A1.25.65	BOLT, special	1	S.11	C	LE4/25
15902	E.A1.20.739	BUSH	1	DTD.625	C	LE4/26
15903	E.A1.20.741	BUSH	1	DTD.625	C	LE4/27
15905	E.A1.20.745	BUSH	1	DTD.625	C	LE4/28
	E.A1.20.737	LEVER, bellcrank	1	-	-	LE4/29
28N/9156370	SP.21	Nipple, lubricating	1	-	C	
	A.15.Y.JS	Nut, 3/8" BSF	1	-	C	LE4/30
15904	E.A1.20.743	Washer, special	2	L.64	C	LE4/31
549	EEAS.5	Washer, red fibre	1	BSS.216	C	LE4/32
21603	EEAS.28/37EU	Washer, special	1	BTD.124	C	LE4/33
		Attaching parts for E;A1.20.735:-				
28M/13590	A27/SS	Nut, 3/8" BSF	1	-	C	LE4/34
28W/9419482	SP.15/S	Washer	1	-	C	
15906	E.A1.20.749	SPINDLE LEVER	1	-	C	LE4/35
		Spares for:- (Repair)				
40970	ASD.514.PS/1	WASHER, special, 22SWG	-	S.520	C	
40971	ASD.514.PS/2	WASHER, special, 22SWG	-	S.520	C	
39022	ASD.514.PS/2	WASHER, special, 22SWG	-	S.520	C	
39023	ASD.514.PS/4	WASHER, special, 22SWG	-	S.520	C	
39024	ASD.514.PS/3	WASHER, special, 22SWG	-	S.520	C	
17821	E.A1.20.757	BRACKET, LEVER, PORT, ASSEMBLY	1	-	B	LE4/36
17822	E.A1.20.759	BRACKET, LEVER, STARBOARD, ASSEMBLY	1	-	B	LE4/37
		Spares for:-				
15910	E.A1.20.767	BRACKET, lever, port	1	-	C	
	E.A1.20.769	BRACKET, lever, starboard	1	-	-	
2954	E.A1.20.771	BUSH	1	S.15	C	

**MAIN PLANE
WING STRUCTURE**

Ref. No.	Part No.	Description	No. off	Matl. Spec.	Cl. of	Plate No.
					Equip. M.R. L.M.	
		1 2 3 4 5 6				
5202	E.A1.20.735	LEVER, BELLCRANK, FLAP OPERATION Spares for:-	1	-	A	LE4/24
5203	E.A1.25.65	BOLT, special	1	S.11	C	LE4/25
15902	E.A1.20.739	BUSH	1	DTD.625	C	LE4/26
15903	E.A1.20.741	BUSH	1	DTD.625	C	LE4/27
	E.A1.20.745	BUSH	1	DTD.625	C	LE4/28
	E.A1.20.737	LEVER, bellcrank	1	DTD.683	C	LE4/29
28N/9156370	SP.21	NIPPLE, lubricating	1	-	C	
28M/1011476	A27/JS	NUT, 3/8" BSF	1	-	C	LE4/38
15904	E.A1.20.743	WASHER, special	2	L.64	C	LE4/31
549	EEAS.5	WASHER, red fibre	1	BSS.216	C	LE4/32
21603	EEAS.28/37EU	WASHER, special	1	BTD.124	C	LE4/33
		Attaching parts for E.A1.20.735:-				
28M/13590	A27/SS	Nut, 3/8" BSF	1	-	C	LE4/34
28W/9419482	SP.15/S	Washer	1	-	C	
15906	E.A1.20.749	SPINDLE LEVER Spares for:- (Repair)	1	-	C	LE4/35
40970	ASD.514/RS/1	WASHER, special, 22 SWG	-	S.520	C	
40971	ASD.514/RS/2	WASHER, special, 22 SWG	-	S.520	C	
39022	ASD.514/RS/3	WASHER, special, 22 SWG	-	S.520	C	
39023	ASD.514/RS/4	WASHER, special, 22 SWG	-	S.520	C	
39024	ASD.514/RS/5	WASHER, special, 22 SWG	-	S.520	C	
3034	E.A1.20.2351	PANEL, access air brake, port	1	-	C	LE5/47
3035	E.A1.20.2352	PANEL, access, air brake, starboard	1	-	C	LE5/48
		Attaching parts for E.A1.20.2351 and E.A1.20.2352:-				
1468	EEAS.1/2C	Screw, 2BA	30	S.96	C	LE5/49
1027	EEAS.1/2½C	Screw, 2BA	11	S.96	C	LE5/50
	E.H8.20.171	PANEL SKIN ASSEMBLY, BOTTOM PORT	1	-	-	
	E.H8.20.172	PANEL SKIN ASSEMBLY, BOTTOM STARBOARD	1	-	-	
		Spares for:-				
	E.H8.20.177	PANEL, skin, port	1	-	-	LE5/51
	E.B6.20.1023	PANEL, skin, starboard	1	-	-	LE5/52
5CX/5121	-	RIG, mounting, landing lamp	1	-	B	LE5/53
17849	E.A1.20.2081	ROLLER BRACKET ASSEMBLY BETWEEN RIBS 3 AND 4 Spares for:-	6	-	C	LE2/26
28D/9453970	A25/15C	BOLT, 2BA	1	-	C	LE2/27
	E.A1.20.2083	BRACKET	1	-	-	LE2/28
40742	E.A1.20.2085	BUSH, spacing	1	-	C	
28M/5908573	A27/CS	NUT, 2BA	1	-	C	LE2/29
28P/19227	SP.90/C6	PIN, split	1	-	C	
5023	E.A1.20.2087	ROLLER, oilite	2	-	C	LE2/30
	AS.29.11.7/044	TUBO, distance, 17 SWG	1	T.4	LM	
28W/9419475	SP.15/C	WASHER	1	-	C	

MAINPLANE
WING STRUCTURE

Ref. No.	Part No.	Description	No. off	Mtrl. Spec.	Cl. of Equip.		Plate No.
					M.R.	L.M.	
		1 2 3 4 5 6					
17850	E.A1.20.2213	ROLLER BRACKET ASSEMBLY BETWEEN RIBS 2 AND 3 Spares for:-	6	-	C		LE2/31
28D/9453970	A25/15C	BOLT, 2BA	1	-	C		LE2/32
	E.A1.20.2215	BRACKET	1	-	-		LE2/33
40242	E.A1.20.2085	BUSH, spacing	1	-	C		
28M/5808573	A27/CS	NUT, 2BA	1	-	C		LE2/34
28P/19227	SP.9/C6	PIN, split	1	-	C		
5023	E.A1.20.2087	ROLLER, oilite	2	-	C		LE2/35
	AS.2811/7/044	TUBE, distance, 17 SWG	1	T.4	LM		
28W/9419475	SP.15/C	WASHER	1	-	C		
		Attaching parts for E.A1.20.2081 & E.A1.20.2213:-					
28M/1278190	AGS.2001/C/1	Nut, 2BA	3	-	C		LE2/36
1468	EEAS.1/2C	Screw, 2BA	3	S.96	C		LE2/37
	E.C7.20.1009	PANEL, SKIN ASSEMBLY TOP, PORT	-	-	-		
	E.C7.20.1010	PANEL, SKIN ASSEMBLY TOP, STARBOARD	-	-	-		
		Spares for:-					
17849	E.A1.20.2081	ROLLER BRACKET ASSEMBLY BETWEEN RIBS 2 AND 3 Spares for:-	3	-	C		LE2/26
28D/9453970	A25/15C	BOLT, 2BA	1	-	C		LE2/27
	E.A1.20.2083	BRACKET	1	-	-		LE2/28
40242	E.A1.20.2085	BUSH, spacing	1	-	C		
28M/5808573	A27/CS	NUT, 2BA	1	-	C		LE2/29
28P/19227	SP.9/C6	PIN, split	1	-	C		
5023	E.A1.20.2087	ROLLER, oilite	2	-	C		LE2/30
	AS.2811/7/044	TUBE, distance, 17 SWG	1	T.4	LM		
28W/9419475	SP.15/C	WASHER	1	-	C		
17850	E.A1.20.2213	ROLLER BRACKET ASSEMBLY BETWEEN RIBS 3 AND 4 Spares for:-	6	-	-		LE2/31
28D/9453970	A25/15C	BOLT, 2BA	1	-	C		LE2/32
	E.A1.20.2215	BRACKET	1	-	-		LE2/33
40242	E.A1.20.2085	BUSH, spacing	1	-	C		
28M/5808573	A27/CS	NUT, 2BA	1	-	C		LE2/34
28P/19227	SP.9/6	PIN, split	1	-	C		
5023	E.A1.20.2087	ROLLER, oilite	2	-	C		LE2/35
	AS.2811/7/044	TUBE, distance, 17 SWG	1	T.4	LM		
28W/9419475	SP.15/C	WASHER	1	-	C		
		Attaching parts for E.A1.20.2081 & E.A1.20.2213:-					
28M/1278190	AGS.2001/C/1	Nut, 2BA	3	-	C		LE2/36
1468	EEAS.1/2C	Screw, 2BA	3	S.96	C		LE2/37
28W/9419475	SP.15/C	WASHER	3	-	C		

**MAINPLANE
WING STRUCTURE**

Ref. No.	Part No.	Description	No. off	Mtl. Spec.	Cl. of Equip.		Plate No.
					M.R.	L.M.	
		1 2 3 4 5 6					
	E.A3.20.1819	PANEL ACCESS ASSEMBLY, STB'D ONLY Spares for:-	1	-	-	-	
	E.A3.20.1817	DOOR, access	1	-	-	-	
	E.A4.20.222	PANEL ACCESS ASSEMBLY, STB'D ONLY	1	-	-	-	
622	E.A1.20.583	PIN, special aileron hinge, inboard	1	S.65	C	-	LE1/30
623	E.A1.20.647	PIN, special aileron hinge, outboard	1	S.65	C	-	LE1/31
	E.A1.20.57	RIB NO.4 AFT ASSEMBLY, PORT	-	-	-	-	
	E.A1.20.58	RIB NO.4 AFT ASSEMBLY, STB'D Spares for:-	-	-	-	-	
21720	E.A1.20.687	BOLT, stop, aileron	2	S.11	C	-	LE1/32
21263	E.A1.20.689	MOUNTING, aileron stop bolt	1	L.40	C	-	LE1/33
13106	E.A1.20.691	MOUNTING, aileron stop bolt	1	L.40	C	-	LE1/34
	1027	EEAS 1/30C	11	HTS	C	-	
	1028	EEAS 1/30	2	HTS	C	-	
	1034	EEAS 1/35	22	HTS	C	-	
	6813	E.A3.20.2531	1	-	B	-	LE4/36
	6814	E.A3.20.2533	1	-	B	-	LE4/37
	E.A3.20.2543	PANEL, access, port Spares for:-	2	L.72	-	-	LE4/38
	E.A3.20.2544	PANEL, access, starboard	2	L.72	-	-	LE4/39
	1025	EEAS 1/31	40	HTS	C	-	LE4/40
	4757	E.A3.20.1977	11	-	C	-	LE4/41
	3066	E.A3.20.948	1	-	B	-	LE1/35
	3064	E.A3.20.947	1	-	B	-	LE1/36
	3067	E.A3.20.946	1	-	B	-	LE1/37
	3065	E.A3.20.945	1	-	B	-	LE1/38
		SKINS, TOP AND BOTTOM Spares for:-	-	-	-	-	
	3649	E.A3.20.1105	QR	S.96	C	-	
	3682	E.A1.20.5321	QR	S.96	C	-	
	E.A1.20.2089	SLEEVE, joint airbrake torque tube	2	DTD.683	MR	-	LE2/38
	E.A1.20.2201	TUBE, assembly, inboard airbrake	1	-	MR	-	LE2/39
	E.A1.20.2203	TUBE, assembly, outboard air brake	1	-	MR	-	LE2/40
	E.A1.20.2205	TUBE, assembly, centre airbrake	1	-	MR	-	LE2/41
	9477	E.A3.20.2239	6	LAM ALUM.	C	-	
	5120	E.A3.20.2365	1	L.40	C	-	
	E.H8.20.9	WING OUTER LEADING EDGE, PORT, ASSEMBLY	-	-	-	-	
	E.H8.20.10	WING OUTER LEADING EDGE, STARBOARD ASSEMBLY Spares for:-	-	-	-	-	
	9156	E.A3.20.2119	1	-	C/MR	-	LE6/16
	9154	E.A3.20.2125	1	-	C/MR	-	LE6/17
	9157	E.A3.20.2120	1	-	C/MR	-	LE6/18
	9155	E.A3.20.2126	1	-	C/MR	-	LE6/19

MAINPLANE
WING STRUCTURE

Ref. No.	Part No.	Description	No. off	Mtrl. Spec.	Cl. of Equip.		Plate No.
					M.R.	L.M.	
		1 2 3 4 5 6					
	E.A3.20.7	NOSE BAY No.5 SKINS ASSEMBLY, PORT	-	-	-	-	
	E.A3.20.8	NOSE BAY NO.5 SKINS ASSEMBLY, STB'D	-	-	-	-	
		Spares for:					
3649	E.A3.20.1105	EYE-BOLT	42	S.96	-	C	
	or						
3682	E.A1.20.5321	EYE-BOLT	42	S.96	-	C	
	E.A3.20.9	NOSE BAY No.6 SKINS ASSEMBLY, PORT	-	-	-	-	
	E.A3.20.10	NOSE BAY NO.6 SKINS ASSEMBLY, STB'D	-	-	-	-	
		Spares for:					
3649	E.A3.20.1105	EYE-BOLT	34	S.96	-	C	
	or						
3682	E.A1.20.5321	EYE BOLT	34	S.96	-	C	
	E.A4.20.303	PANEL ACCESS INSTALLATION BOTTOM SKIN, PORT	-	-	-	-	
	E.A4.20.304	PANEL ACCESS INSTALLATION BOTTOM SKIN STARBOARD	-	-	-	-	
		Spares for:					
	E.B7.20.69	PANEL DOOR ASSEMBLY, PORT	1	-	-	-	LE5/54
	E.B7.20.70	PANEL DOOR ASSEMBLY, STARBOARD	1	-	-	-	LE5/55
20517	EEAS.6/C	SCREW, 2BA	10	-	-	C	LE5/56
	EEAS.2/C	SCREW, 2BA	31	-	-	-	LE5/57
	E.A4.20.325	PANEL ACCESS INSTALLATION, BOTTOM SKIN PORT	-	-	-	-	
	E.A4.20.326	PANEL ACCESS INSTALLATION, BOTTOM SKIN STARBOARD	-	-	-	-	
		Spares for:					
	E.A4.20.351	PANEL, access port	1	-	-	-	LE5/58
	E.A4.20.352	PANEL, access starboard	1	-	-	-	LE5/59
1032	EEAS.1/2E	SCREW, 4" BSF	48	-	-	C	LE5/60
2917	EEAS.1/34E	SCREW, 4" BSF	14	-	-	C	LE5/61
1036	EEAS.1/5E	SCREW, 4" BSF	14	-	-	C	LE5/62
1031	EEAS.1/6C	SCREW, 2BA	19	-	-	C	LE5/63
	E.A4.20.327	PANEL ACCESS INSTALLATION, RECUPERATOR, TOP SKIN, PORT	-	-	-	-	
	E.A4.20.328	PANEL ACCESS INSTALLATION, RECUPERATOR, TOP SKIN, STARBOARD	-	-	-	-	
		Spares for:					
	E.B7.20.155	COVER, access recuperator, between ribs 1 and 2A, top skin	1	-	-	-	LE6/20
	E.A4.20.197	PANEL, INSTALLATION U.S. AERIAL	-	-	-	-	
		Spares for:					
5654	E.A3.20.1671	PANEL, access U.S. aerial	1	-	-	C	LE5/64
1026	EEAS.1/14C	Attaching parts for E.A3.20.1671 Screw, 2BA	10	S.96	-	C	LE5/65
	E.A4.20.213	PANEL INSTALLATION U.S. AERIAL HOUSING, STARBOARD ONLY	-	-	-	-	
		Spares for:					
14600	E.A3.20.1381	COVER, assembly, U.S.	1	-	-	C	LE6/21
		Attaching parts for E.A3.20.1381					
205/0701	AS.1042/30	Bolt, 2BA	20	-	-	C	LE6/22
	E.A3.20.1371	HOUSING assembly	1	-	-	-	LE6/23
205/0711	W.1303	SCREW, 2BA	4	-	-	C	LE6/24
	E.A3.20.1351	SEAL assembly	1	-	-	-	LE6/25

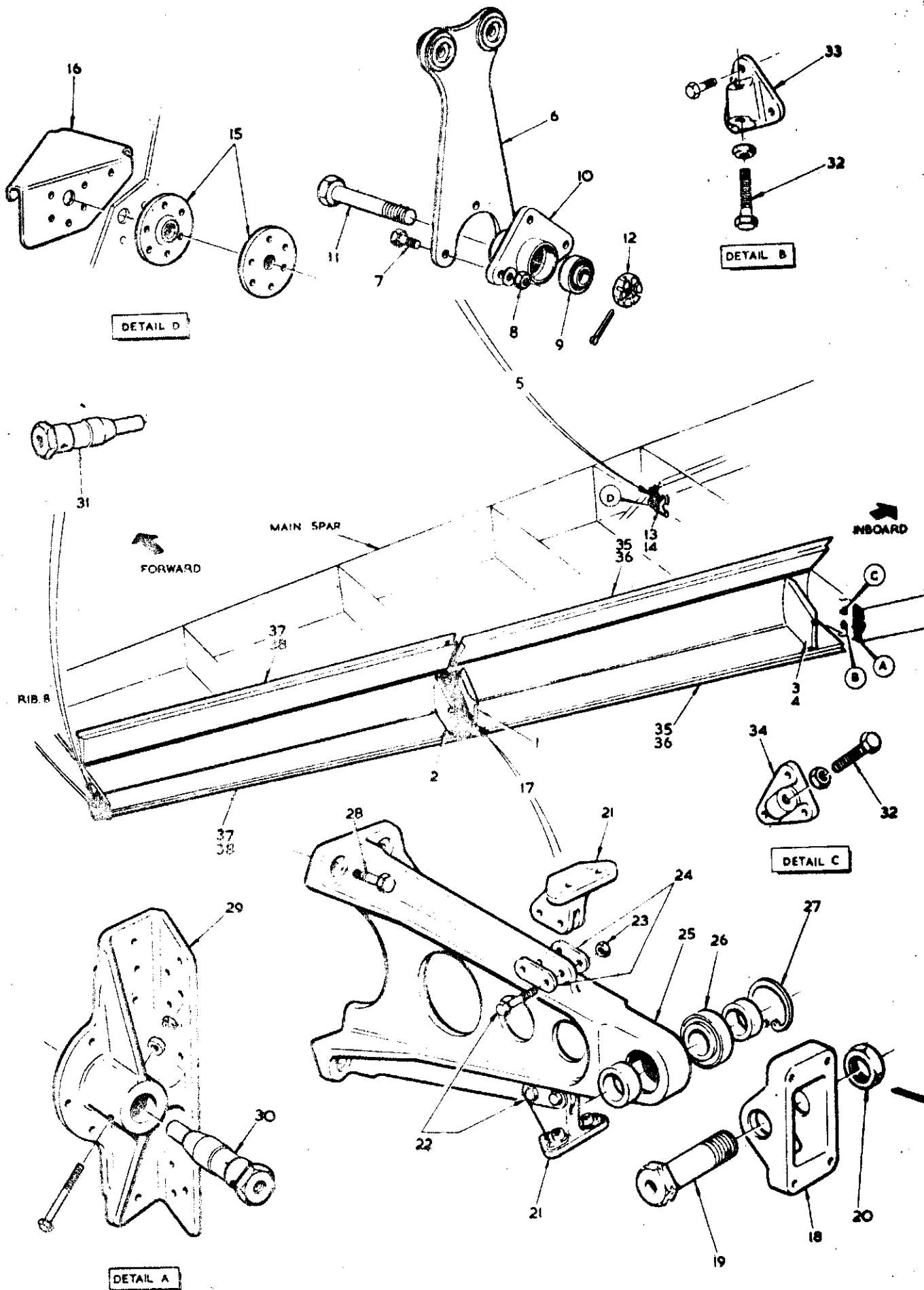
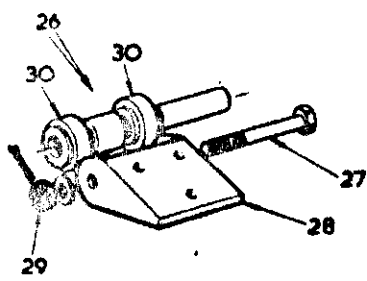


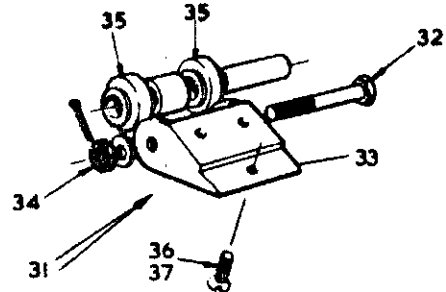
FIG 1 WING STRUCTURE

CODE A

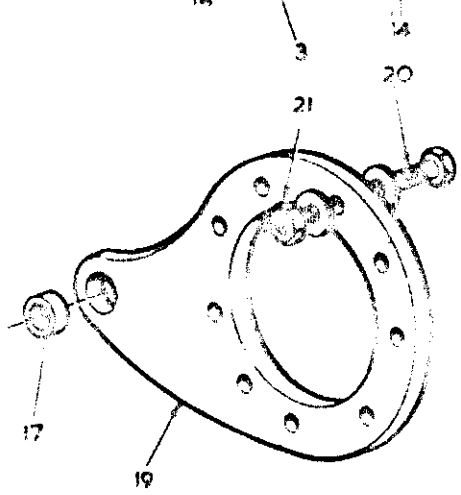
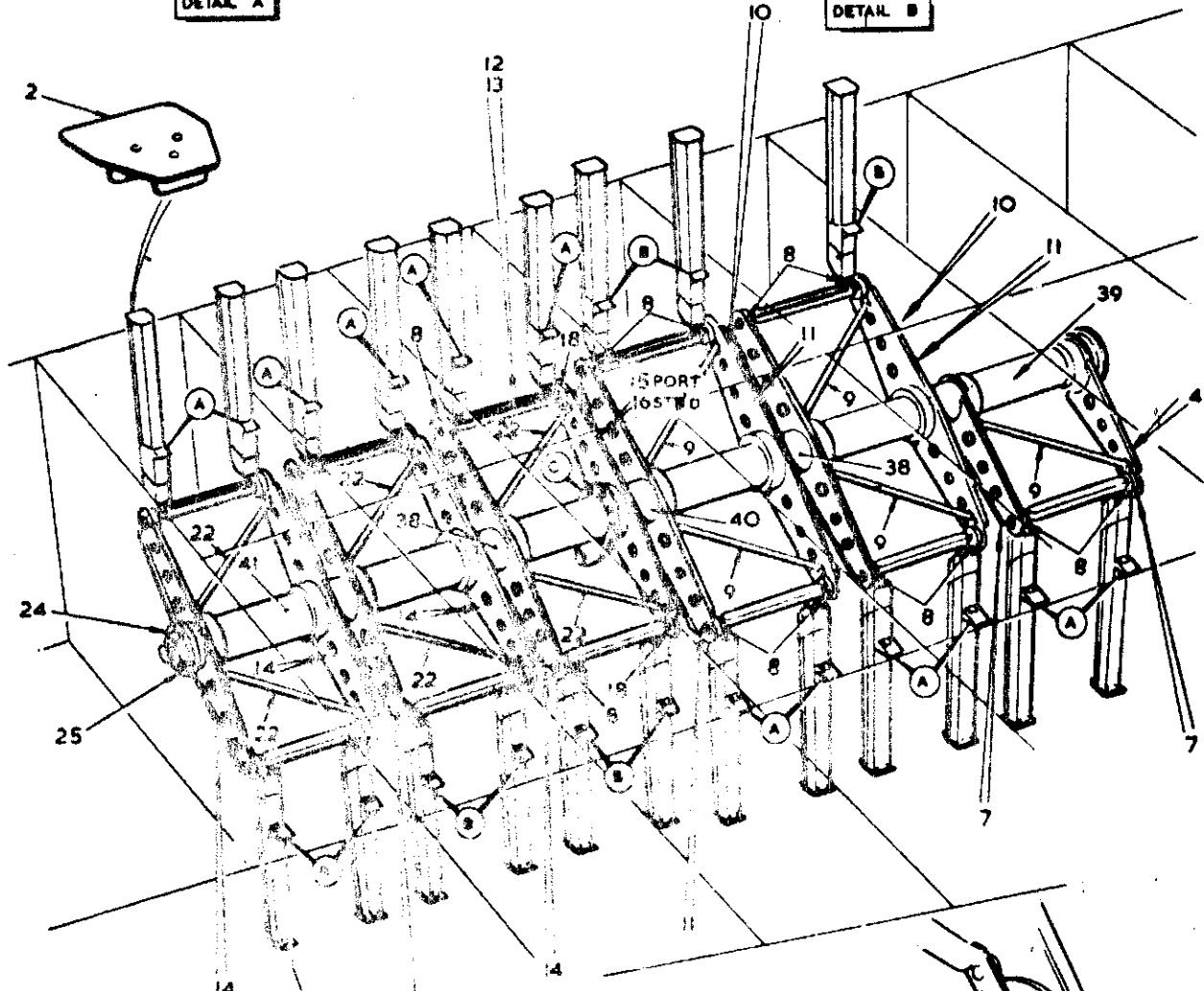
SECT LE



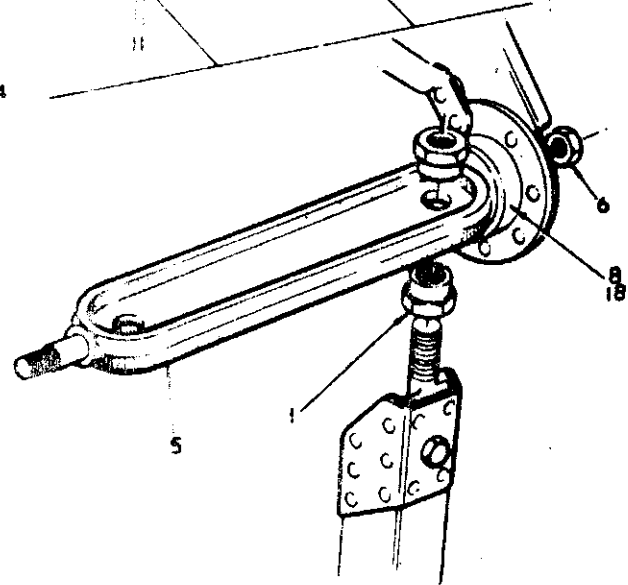
DETAIL A



DETAIL B



DETAIL C



TYPICAL

FIG. 2 WING STRUCTURE

CODE A, B

SECT LE

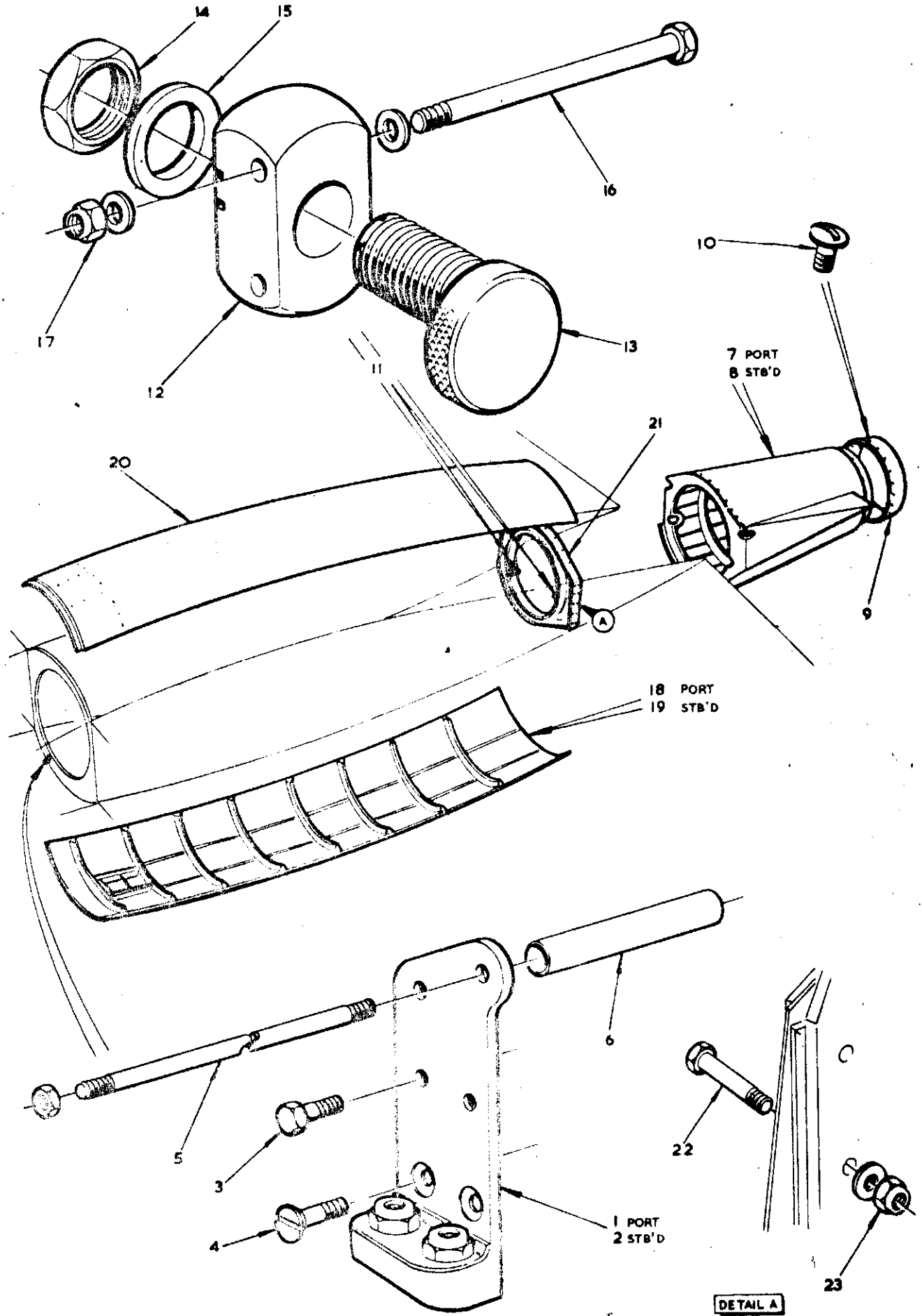


FIG. 3. WING STRUCTURE

CODE A

SECT LE

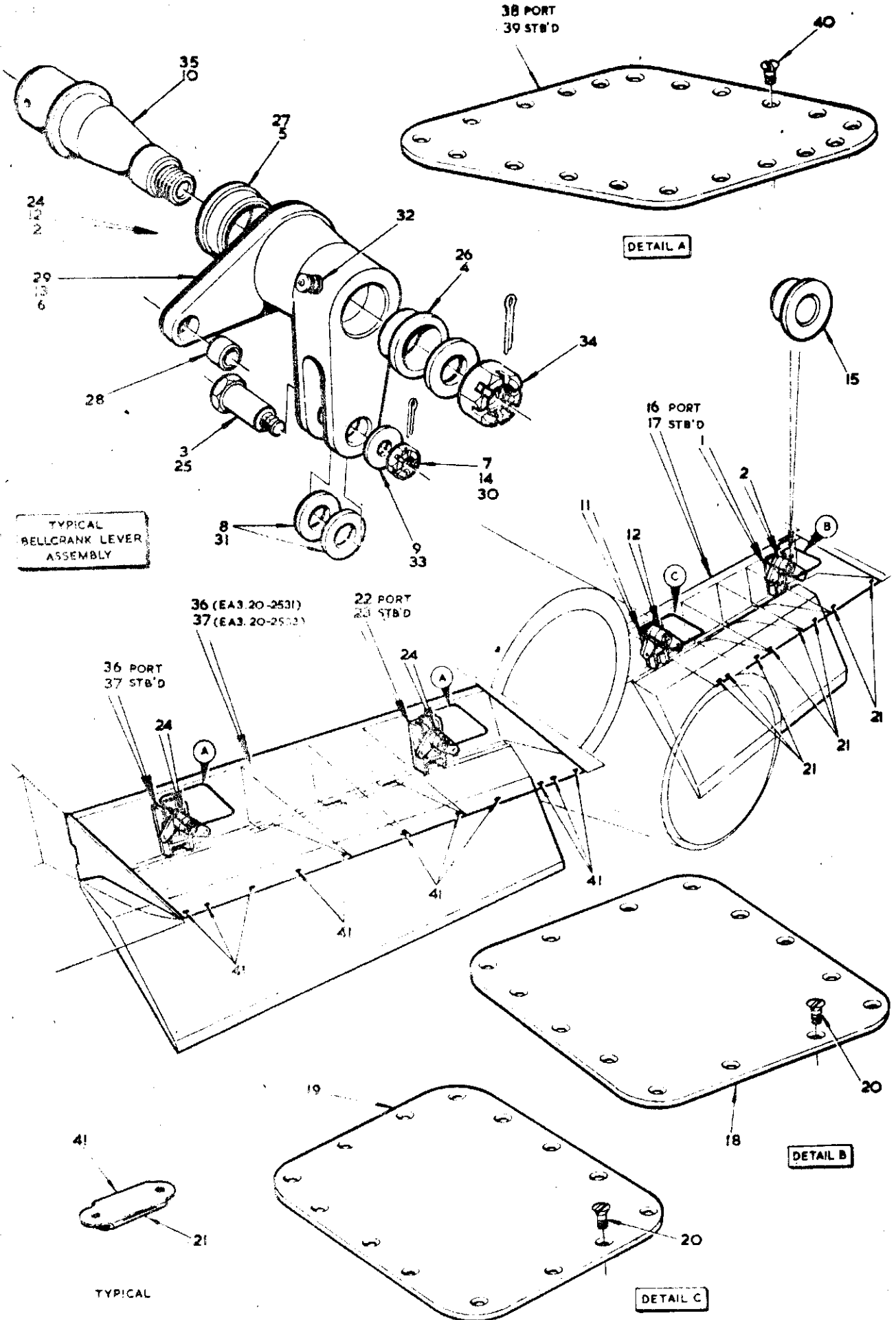


FIG.4. WING STRUCTURE

CODE A9

SECT LE

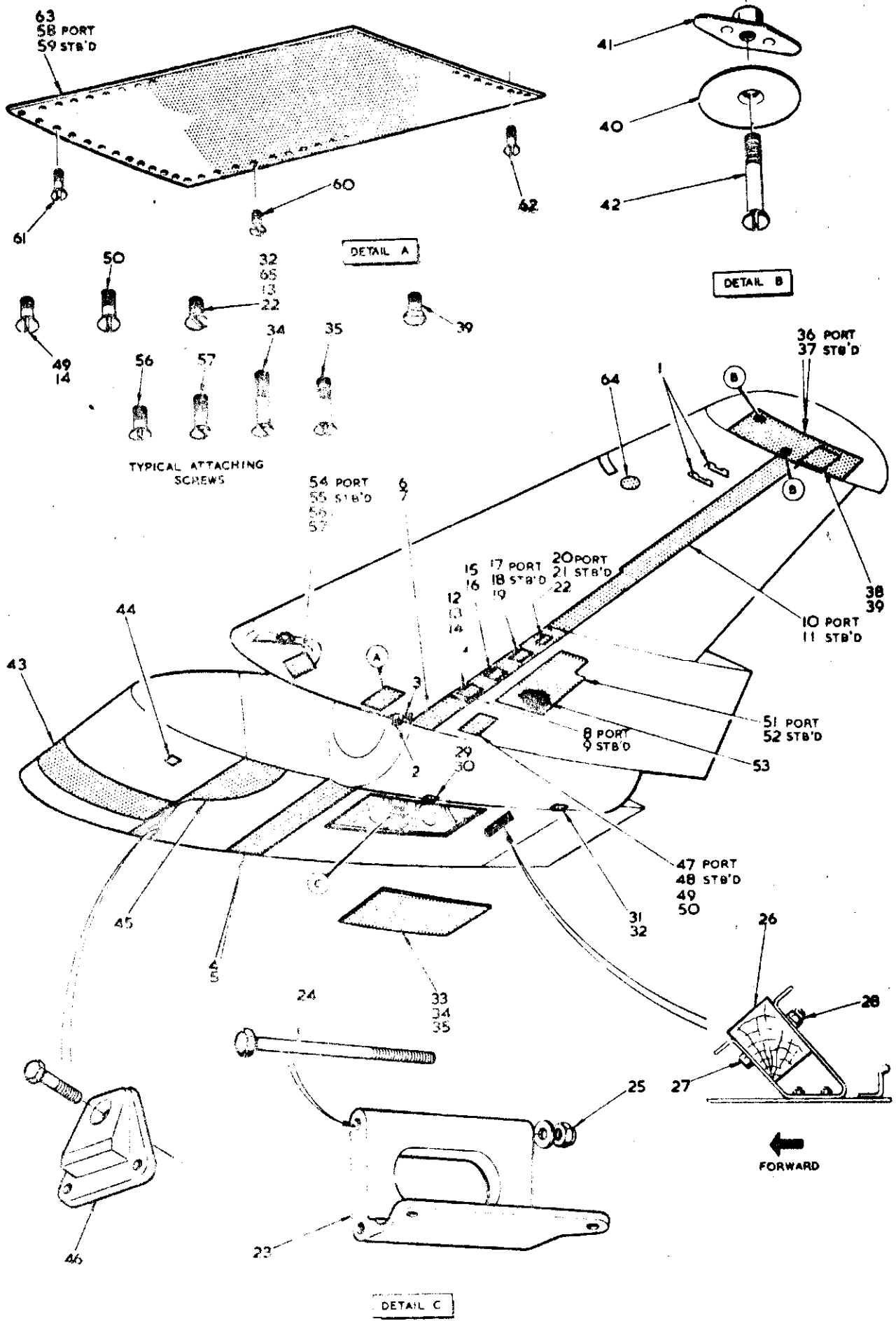


FIG. 5 WING STRUCTURE

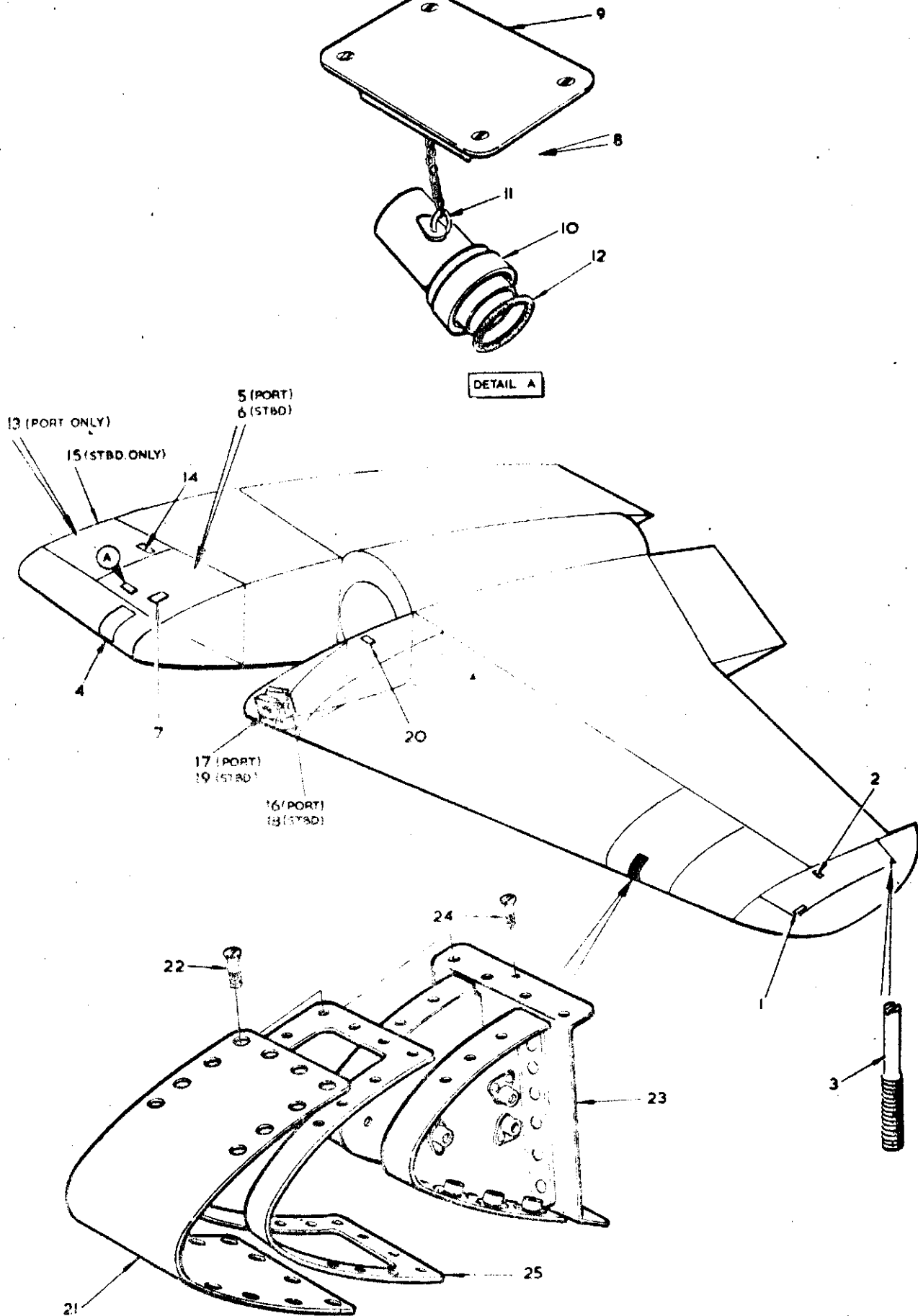


FIG. 6 WING STRUCTURE

CODE A

SECT LE

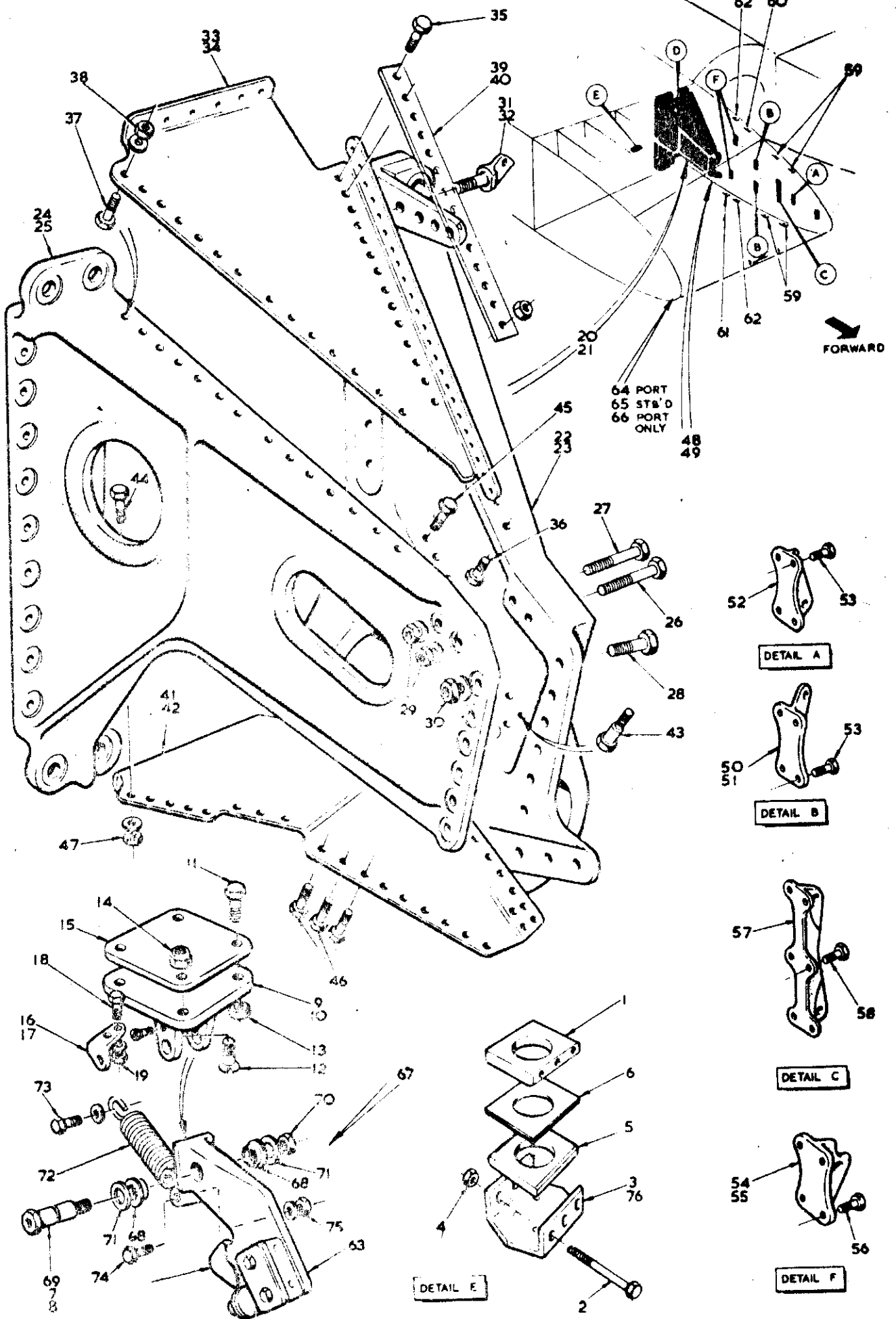


FIG. 7 WING STRUCTURE

CODE A

SECT LE

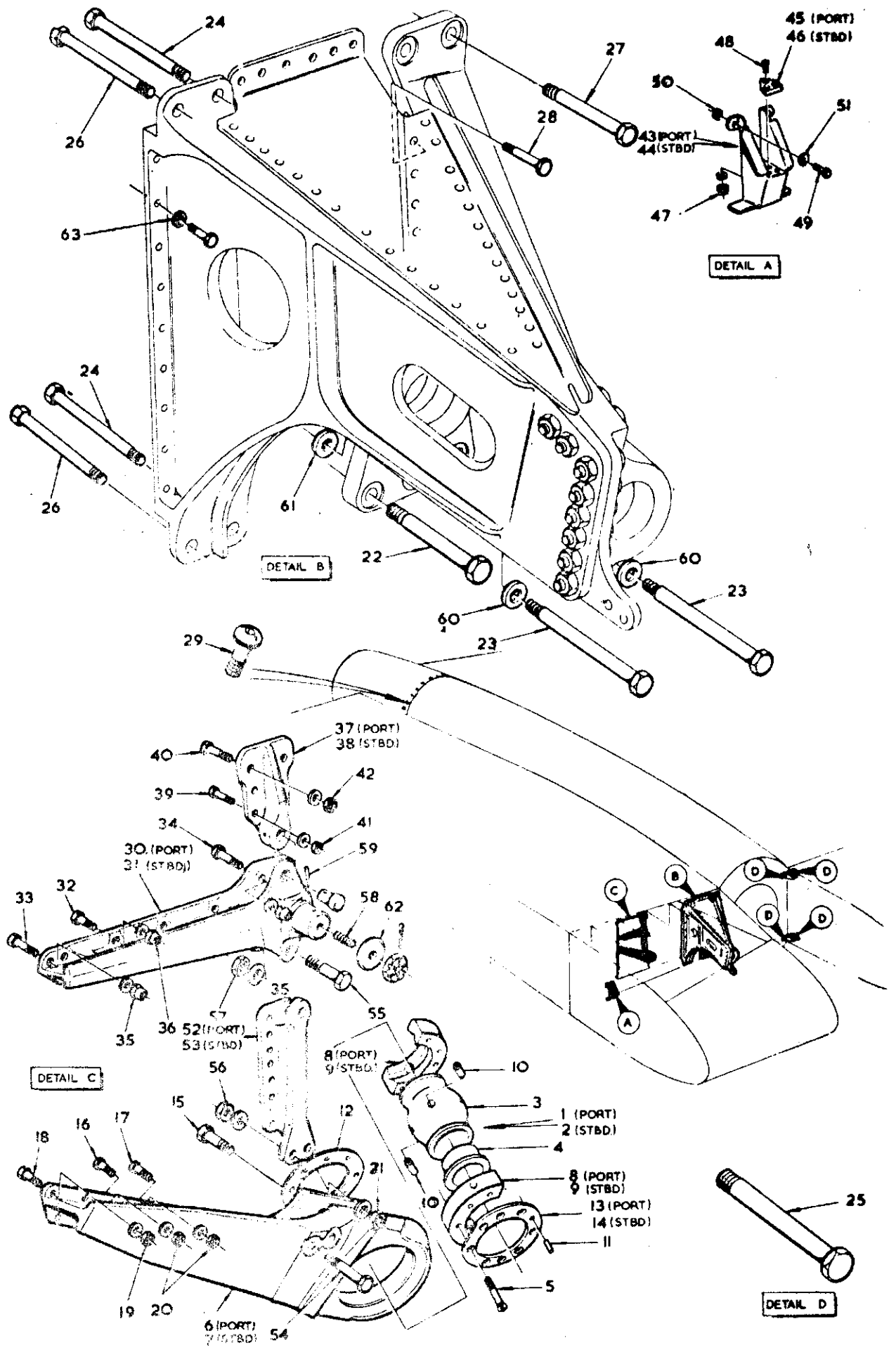
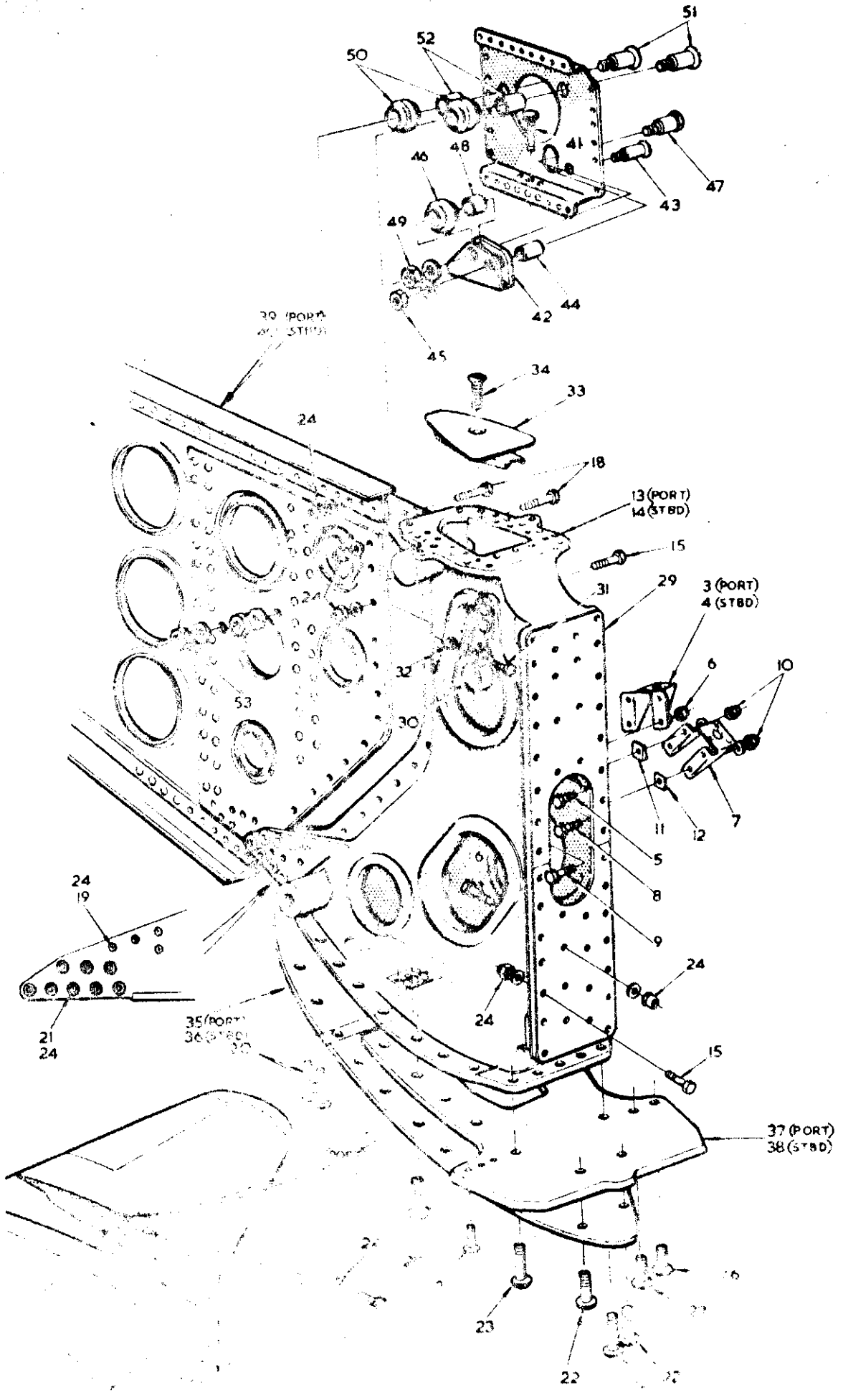


FIG. 8 WING STRUCTURE



ENGINE STRUCTURE

This file was downloaded
from the RTFM Library.

Link: www.scottbouch.com/rtfm

Please see site for usage terms,
and more aircraft documents.



LIGHTNING MK. 1
COVER PITOT HEAD
EB2-88-5111