

Position Indicators

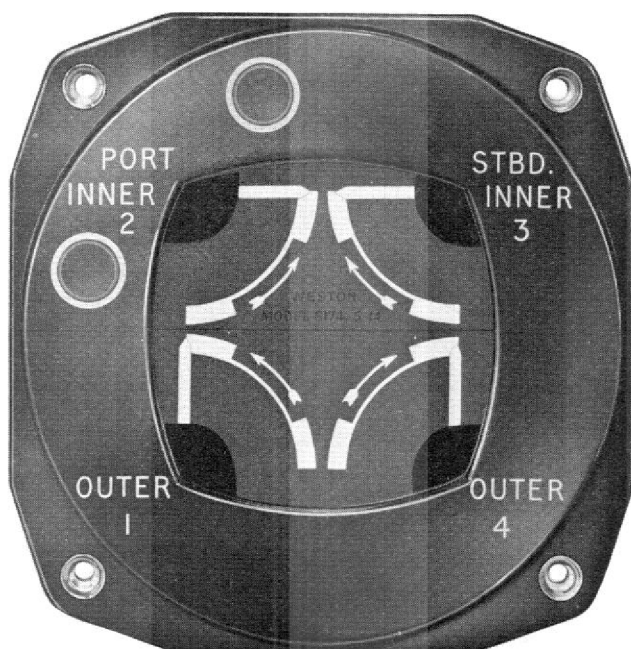
POSITION INDICATORS

Any of the ratiometer indicators listed in Section 8 can be supplied for use with the Model S132 position transmitter. Special multi-movement indicators have also been manufactured for particular aircraft.

A special version of the Model S216 indicator (See Section 8) is supplied for use with the Model S194 position transmitter. Full scale deflection can be obtained, representing a total rod movement of 1 in (25 mm).

By adjusting the transmitter's sliding rod the indicator can be set correctly at any chosen point.

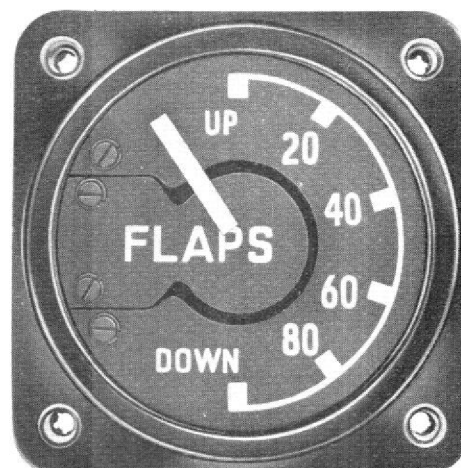
The equipment is unaffected by normal voltage and frequency variations.



*Model S 174 Form 5
Typical Presentation*



*Model S 216 Form 2
Typical Presentation*



*Model S 63 Form 4
Typical Presentation*

PREFERRED RANGES

Preferred ranges are not specified, as indicators normally need to be calibrated to suit each particular application.

The instruments listed below are offered, uncalibrated, for experimental calibration by customer. The data thus obtained enables indicators to be supplied with fully graduated scales; a new sub-specification number is allocated for identification purposes.

All screw terminals and fixing nuts have Unified threads.

Dial: White, with arc and end lines only in pencil.

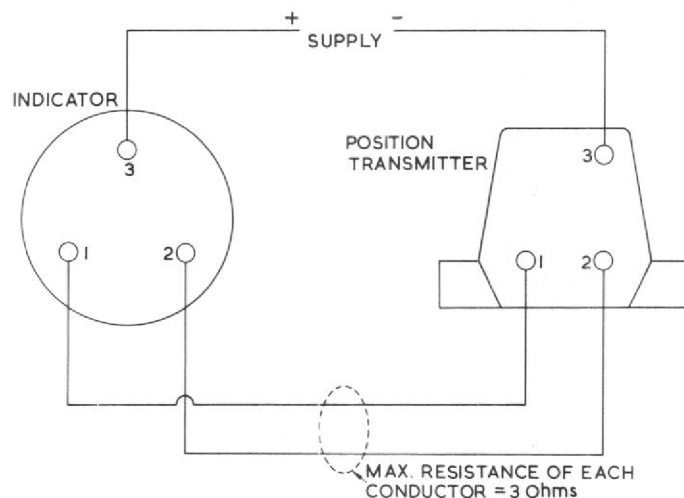
Pointer: White S63 : Lance - narrow tip (LNT)
 S149 : Lance (L)

Operating Voltage: 24V D.C. nominal

FOR USE WITH MODEL S 132 POSITION TRANSMITTER

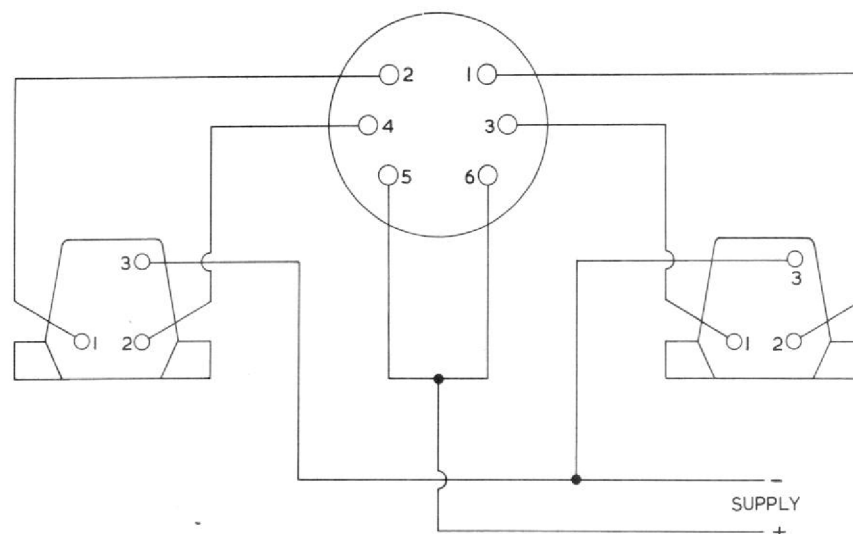
2 in Dia. Unsealed 3 pin Cannon Connector	2 in Dia. Unsealed Screw Terminals	Small S.A.E. Screw Terminals	Large S.A.E. Screw Terminals
S149.1.68	S149.1.325	S63.4.1243	S63.5.1244

TYPICAL WIRING DIAGRAMS FOR RATIO-METER POSITION INDICATORS USED WITH POSITION TRANSMITTERS



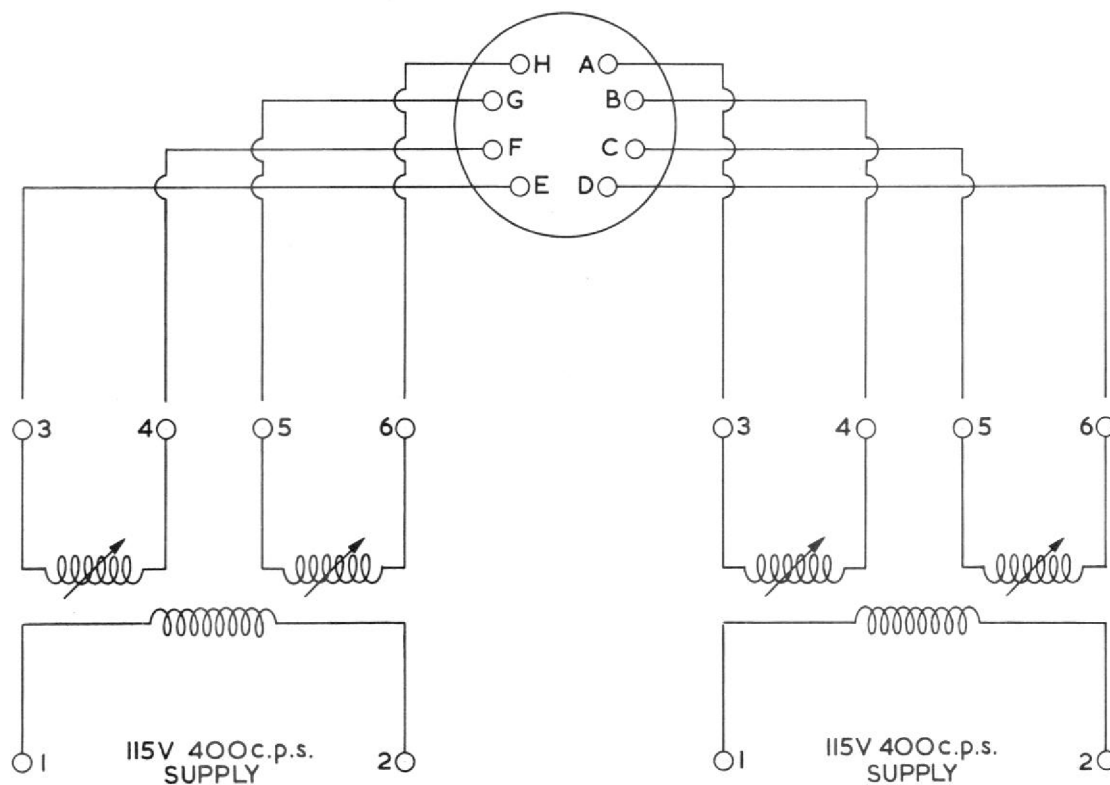
Alternative terminal markings B · 1, C · 2, A · 3.

DUAL RATIOMETER POSITION INDICATOR FOR USE WITH TWO POSITION TRANSMITTERS



Alternative terminal markings of indicator 1 · E, 2 · B, 3 · C, 4 · F, 5 · A, 6 · D.

DUAL A.C. RATIOMETER POSITION INDICATOR FOR USE WITH TWO INDUCTIVE TYPE POSITION TRANSMITTERS





This file was downloaded
from the RTFM Library.

Link: www.scottbouch.com/rtfm

Please see site for usage terms,
and more aircraft documents.