



OVERHAUL MANUAL

MOUNTING PLATE - 169500

SANGAMO WESTON LIMITED

Head office and Works:

ENFIELD, MIDDLESEX, ENGLAND

Telegrams: "Sanwest, Enfield."

Telephones: Enfield 3434 (6 lines), Enfield 1242 (6 lines)



The introduction of any amendment or revision not certified in accordance with British Civil Airworthiness Requirements Chapter A6-2 will invalidate the statement of certification on Mounting Plate 169500. Amendments or revisions embodied in this manual, which have been certified under an approval authorisation other than that applicable to the initial certification must be recorded on separate record sheets.



MOUNTING PLATE - 169500

REVISION RECORD SHEET

Revision No.	Date of Issue	Incorporated by:	Date	Remarks
1				
2				
3				
4				
5				
6				
7				
8				
9				
10				
11				
12				
13				
14				
15				
16				
17				
18				
19				
20				
21				
22				
23				
24				
25				
26				
27				
28				
29				
30				



This Manual complies with British Civil Airworthiness Requirements, Chapter A6-2. The technical accuracy of this manual has been verified and is certified correct.

Signed. *H. J. Lovegrove*

Date. August 1962

A.R.B. Design Approval No. AD/1147/47



OVERHAUL MANUAL
MOUNTING PLATE 169500

TABLE OF CONTENTS

	Para.
Description	1
Disassembly	2
Cleaning	3
Inspection	4
Repair	5
Assembly	6
Trouble shooting	9
Storage instructions	10
Overhaul period	13

ILLUSTRATIONS

	Fig.
Mounting plate 169500	1

OVERHAUL MANUAL

MOUNTING PLATE 169500

1. Description and Operation

A. Description

Mounting Plate 169500 is a shallow, three-sided tray, manufactured from a light alloy and fitted with a clamp block at the open end of the tray.

Two channel shaped fixing brackets, riveted to the underside of the mounting plate, are drilled to accommodate its three securing bolts; one bracket is drilled to receive two bolts, the other one only.

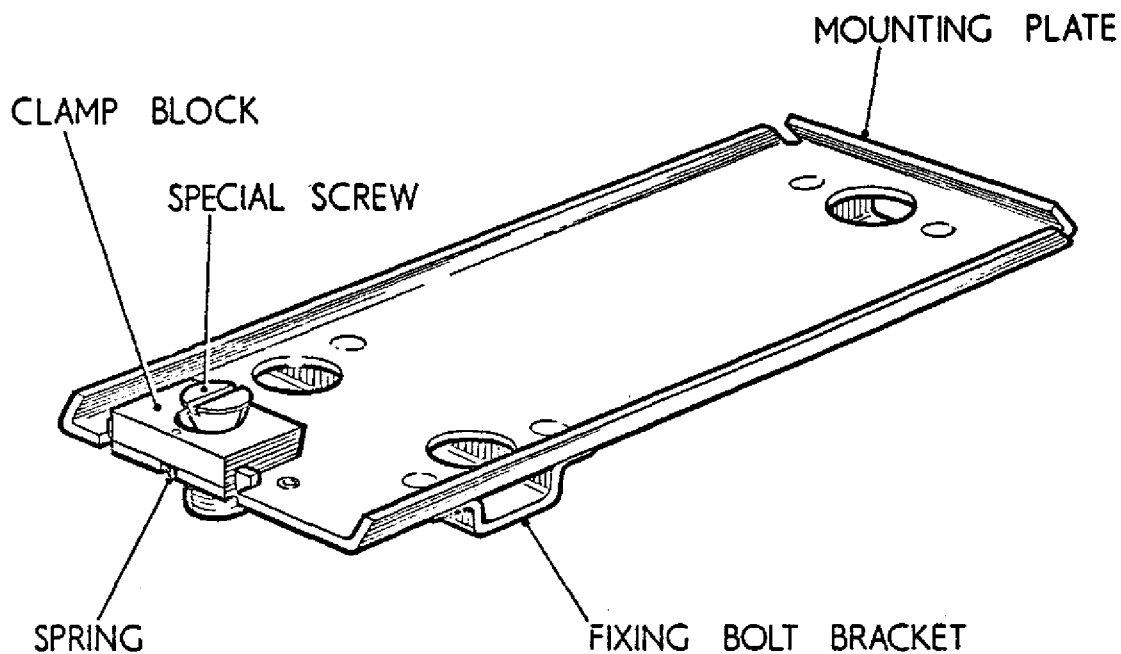


Fig.1. Mounting plate 169500

B. Operation

The clamp block at the open end of the three-sided tray is actuated by a special counter-sunk head screw which, when tightened, forces the clamp block against the associated transmitter securing it against the lip at the opposite end of the tray. The edge of the clamp block and the end of the tray are both angled inwards slightly and engage in grooves machined across the base of the transmitter.



OVERHAUL MANUAL

MOUNTING PLATE 169500

2. Disassembly

A. Procedure

- (1) Unscrew and remove special screw.
- (2) Lift clamp block from surface of Mounting Plate.
- (3) Unhook spring from its anchor stud.
- (4) Remove clamp block and spring complete.

3. Cleaning

A. Schedule of materials

- (1) Carbon Tetrachloride, B.P.C.
- (2) Clean cloth.

B. Procedure

- (1) Remove all foreign matter from the Mounting Plate, special screw and clamp block by means of a clean cloth moistened with Carbon Tetrachloride.
- (2) Blow out dust and dirt from between the fixing bolt brackets with a fine jet of clean, dry air.

4. Inspection

A. Procedure

- (1) Examine the plate for cracks, corrosion and other signs of deterioration.
- (2) Check the special screw and threaded bush for condition and serviceability of threads.
- (3) Ensure that the clamp block is free to move and that the spring functions satisfactorily.

5. Repair

The mounting plate is an irreparable item and should be discarded if faulty.



OVERHAUL MANUAL

MOUNTING PLATE 169500

6. Assembly

- (1) Replace clamp block and spring complete.
- (2) Attach spring to its anchor stud.
- (3) Place clamp block in position on the surface of the Mounting Plate.
- (4) Insert and tighten special screw.

9. Trouble shooting

A. Causes

The main causes of trouble are as follows:

- (1) Dirt or corrosion preventing the free movement of the clamp block.
- (2) Unsatisfactory function of the spring.
- (3) Insecure fixing bolt brackets.
- (4) Damage to threads of special screw or threaded bush.

B. Correction

- (1) Clean the Mounting Plate as detailed in paragraph 3 of this Manual.
- (2) Ensure that the fixing bolt brackets are securely riveted to the Mounting Plate.

10. Storage instructions

A. Conditions

- (1) It is recommended that the mounting plate be retained in its original packing throughout the storage period and kept in a place remote from any process emitting fumes which might damage the packing materials or the mounting plate.
- (2) The storage conditions should be such that the humidity does not exceed 50%.

B. Preparation

If the original packing is not available, prepare the following:

- (1) A strong cardboard box whose internal dimensions are 6½ in. x 3½ in. x 1½ in. deep.



OVERHAUL MANUAL

- (2) Two strips of corrugated cardboard, one $2\frac{1}{2}$ in. wide and 24 in. long; the other $5\frac{1}{2}$ in. wide and 18 in. long.
- (3) Cellulose wadding.
- (4) A label.

C. Procedure

- (1) Wrap the narrow strip of corrugated cardboard lengthways around the Mounting Plate, then wrap the wide strip around the plate so that no surfaces are left exposed.
- (2) Place this assembly into the cardboard box.
- (3) Pack the cellulose wadding into the cardboard box around the Mounting Plate.
- (4) Attach the label to the box giving the following information:
 - (a) Identification, e.g. Mounting Plate 169500.
 - (b) Date of overhaul.

D. Storage limiting period

- (1) The storage limiting period of the Mounting Plate is six years.
- (2) At intervals of six years the plate should be inspected for cracks, corrosion and other signs of deterioration. If found satisfactory, the mounting plate may then be returned to storage.

13. Overhaul period

The Mounting Plate must be removed from the aircraft and examined as detailed in this manual whenever the associated Pressure Transmitter is renewed.



This file was downloaded
from the RTFM Library.

Link: www.scottbouch.com/rtfm

Please see site for usage terms,
and more aircraft documents.